

HP Elite x2 1012 G1



Masterfully crafted 2-in-1 for today's business.

Experience beauty and power that goes beyond expectations with the HP Elite x2 1012. It's a tested-tough 2 in 1 with precision-crafted keyboards, and a thin and light powerhouse designed to the exacting standards of the enterprise.



- Windows 10 Pro¹
- 30,48 cm (12") diagonal display

Mobility and style without compromise

- Strikingly thin and elegant, the Elite x2 1012 is a 2 in 1 for the mobile workforce and executives who want no compromises when it comes to enterprise-class power, durability, optional LTE connectivity⁴ and productivity on the go, in a stylish design.

Designed for IT, loved by users

- Stunning IT friendly design. Elite x2 1012 incorporates Elite global enterprise-class security and manageability features, enterprise-class durability, on-site serviceability,² global sku availability and support across 180 countries.

Accessories built for how you work

- At your desk or on the road, meet the specific needs of your work day with the included HP Active Pen with App Launch that uses Wacom technology. Accessorize to boost your efficiency. Add optional enterprise docking solutions³ and advanced keyboards.³

Featuring

- Start, work, and transition between modes easily with Windows 10 Pro.¹
- Superb typing experience, with high performance keyboards for productivity on the go with the HP Elite x2 1012 keyboard options³.
- Create with the precision and accuracy of industry preferred Wacom technology in the HP Active Pen with App Launch.
- Efficient performance and extended battery life let you work, surf, and connect with colleagues.
- Charge devices, transfer data quickly, and connect to 4k devices with the USB-C™ port with Thunderbolt™ technology.
- Conduct virtual meetings with Audio by Bang & Olufsen, HP Noise Reduction Software and front/back camera.
- Help keep sensitive information safe with the latest with Windows 10 Pro¹ and HP Client Security⁵ technology solutions.
- Reduce management time thanks to the 2 in 1 design and HP Client Management Solutions⁵ and Intel® vPro™⁶
- Simplify technical support with Helpdesk by HP Care. Rely on cost-effective expertise that's available 24x7, covering multiple brands, devices and operating systems.⁷

HP Elite x2 1012 G1 Specifications Table



| | |
|---|--|
| Available Operating System | Windows 10 Pro 64 ¹ Windows 10 Home 64 ¹ |
| Processor Family² | Intel® Core™ m7 processor; Intel® Core™ m5 processor; Intel® Core™ m3 processor |
| Available Processors² | Intel® Core™ m7-6Y75 with Intel HD Graphics 515 (1.2 GHz, up to 3.1 GHz with Intel Turbo Boost Technology, 4 MB cache, 2 cores); Intel® Core™ m5-6Y57 with Intel HD Graphics 515 (1.1 GHz, up to 2.8 GHz with Intel Turbo Boost Technology, 4 MB cache, 2 cores); Intel® Core™ m5-6Y54 with Intel HD Graphics 515 (1.1 GHz, up to 2.7 GHz with Intel Turbo Boost Technology, 4 MB cache, 2 cores); Intel® Core™ m3-6Y30 with Intel HD Graphics 515 (900 MHz, up to 2.2 GHz with Intel Turbo Boost Technology, 4 MB cache, 2 cores) |
| Chipset | Chipset is integrated with processor |
| Maximum Memory | Up to 8 GB LPDDR3-1866 SDRAM Standard memory note: Transfer rates up to 1866 MT/s. Memory down dual channel (4 GB or 8 GB) |
| Internal Storage | 128 GB up to 512 GB M.2 SATA SSD ³ up to 180 GB or 256 GB M.2 SATA SED SSD ³ up to 256 GB M.2 PCIe SSD ³ |
| Display | 30,48 cm (12") diagonal FHD UWVA eDP ultra-slim LED-backlit touch screen (1920 x 1280), direct bonded, Corning® Gorilla® Glass 4 ⁶ |
| Available Graphics | Integrated: Intel® HD Graphics 515 |
| Audio | Audio by Bang & Olufsen; Dual stereo speakers; Dual microphone array |
| Wireless Technologies | Intel® Dual Band Wireless-AC 8260 802.11a/b/g/n/ac (2x2) WiFi and Bluetooth® 4.2 Combo; Intel® Tri-Band Wireless-AC 18260 802.11a/b/g/n/ac (2x2) and Bluetooth® 4.2 + WiGig Combo; HP hs3110 HSPA+ Mobile Broadband; HP lt4120 Qualcomm® Snapdragon™ X5 LTE Mobile Broadband Module ^{4,5} |
| Communications | USB 3.0 to Gigabit adapter |
| Expansion Slots | 1 microSD; 1 micro SIM (select models) (Supports SD, SDHC, SDXC (microSD)) |
| Ports and Connectors | 1 USB Type-C™ with Thunderbolt™ support (docking, charging and USB 3.1); 1 USB Type-A (USB 3.0); 1 headphone/microphone combo |
| Input Device | HP Advanced Keyboard (with NFC and smartcard reader) (select models); HP Travel Keyboard (select models) ClickPad with on/off button, supports 2-way scroll, taps and gestures enabled by default, two-finger scrolling, two finger zoom (pinch); HP Active Pen with Application Launch Button with Wacom technology Accelerometer Magnetometer, Gyro (Combo chip) (tablet); Ambient light sensor (tablet); Proximity (SAR for WWAN) (tablet); NFC (advanced keyboard); Dual Accelerometers (travel and advanced keyboard) |
| Webcam | 2 MP FHD 1080p front-facing webcam; 5 MP FHD 1080p rear-facing ⁶ |
| Available Software | Buy Office; HP Support Assistant; HP ePrint; CyberLink Power DVD; Skype ^{7,8} |
| Security Management | TPM 2.0; HP Fingerprint Reader (select models); Integrated smart card reader (advanced keyboard); Power-on Authentication (password, fingerprint); Drive encryption pre-boot (password, fingerprint, select smart cards); HP BIOSphere with HP Sure Start; Absolute Persistence Module; Microsoft Defender ^{12,13,14} |
| Power | 45 W Smart USB Type-C™ AC adapter 4-cell, long life 40 WHr Li-ion polymer (tablet) |
| Dimensions | 300 x 213.5 x 8.05 mm (tablet); 300 x 213.5 x 13.45 mm (tablet with travel keyboard); 300 x 213.5 x 16.45 mm (tablet with advanced keyboard) |
| Weight | Starting at 820 g (tablet); Starting at 1205 g (tablet with travel keyboard); Starting at 1270 g (tablet with advanced keyboard) (Lowest weight configuration. Weight will vary by configuration. See QuickSpecs.) |
| Environmental | Low halogen ¹⁵ |
| Energy Efficiency Compliance | ENERGY STAR® certified configurations available |
| Warranty | 3-year limited parts, labor (3/3/0) warranty. Certain restrictions and exclusions apply. |

HP Elite x2 1012 G1

Accessories and services (not included)

HP Elite 65W Thunderbolt 3 Dock



Create a remarkably powerful and streamlined workspace without the clutter with the HP Thunderbolt 3 Dock. Available in 3 options dependant on your notebook requirements. Choose from HP 65W dock, HP ZBook 150W dock or HP ZBook 200W dock. Get expansive device, display, and network connectivity plus simultaneous charging of your system through one simple cable from the dock to your HP EliteBook.

Product number: P5Q54AA

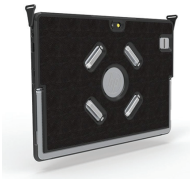
HP Elite x2 1012 Advanced Keyboard



Boost your productivity wherever your work takes you with the executive-class, full-sized the HP Elite x2 1012 G1 Advanced Keyboard.¹

Product number: P5Q65AA

HP Elite x2 1012 Protective Case



Give your HP Elite x2 1012 an extra layer of protection wherever the day takes you with the stylish, business-class HP Elite x2 102 Protective Case.

Product number: T3P15AA

HP Elite x2 1012 Travel Keyboard



Be productive on the go with the executive-class, full-sized the HP Elite x2 1012 G1 Travel Keyboard.¹

Product number: T4Z25AA

HP Elite Top Load Colombian Leather Case



Set a new style standard when you're on the move with the HP Elite Top Load Colombian Leather Case, a beautifully lush full-grain leather bag that helps protect your devices and data and has ultimate expandability for your everyday essentials without the extra bulk.

Product number: T9H72AA

HP 3 year Next business day Onsite Notebook Only Service



Receive 3 years of next business day onsite repair from an HP-qualified technician for your computing device, if the issue cannot be solved remotely.

Product number: U4391E

Learn more at

www.hp.eu/hpoptions

HP Elite x2 1012 G1

Messaging Footnotes

- ¹ Not all features are available in all editions or versions of Windows. Systems may require upgraded and/or separately purchased hardware, drivers and/or software to take full advantage of Windows functionality. Windows 10 is automatically updated, which is always enabled. ISP fees may apply and additional requirements may apply over time for updates. See <http://www.microsoft.com>.
- ² Serviceable by HP Support, HP Certified technicians, HP Authorized Service Providers or participants in HP's Self Maintainer program. See www.hp.com/partners/SMprogram.
- ³ Sold separately or as an optional feature.
- ⁴ Built in Qualcomm® Gobi™ modules available in select HP products and require wireless data service contract, network support, and is not available in all areas. Contact service provider to determine the coverage area and availability. 4G LTE not available in all regions. Connection speeds will vary due to location, environment, network conditions, and other factors.
- ⁵ Requires Windows.
- ⁶ Some functionality of this technology, such as Intel® Active management technology and Intel Virtualization technology, requires additional 3rd party software in order to run. Availability of future "virtual appliances" applications for Intel vPro technology is dependent on 3rd party software providers.
- ⁷ HP Care Services are optional. Service levels and response times for HP Care Services may vary depending on your geographic location. Service starts on date of hardware purchase. Restrictions and limitations apply. For details, visit www.hp.com/go/cpc. HP services are governed by the applicable HP terms and conditions of service provided or indicated to Customer at the time of purchase. Customer may have additional statutory rights according to applicable local laws, and such rights are not in any way affected by the HP terms and conditions of service or the HP Limited Warranty provided with your HP Product.

Technical specifications disclaimers

- ¹ Not all features are available in all editions or versions of Windows. Systems may require upgraded and/or separately purchased hardware, drivers, software or BIOS update to take full advantage of Windows functionality. Windows 10 is automatically updated, which is always enabled. ISP fees may apply and additional requirements may apply over time for updates. See <http://www.microsoft.com>.
- ² Multi-Core is designed to improve performance of certain software products. Not all customers or software applications will necessarily benefit from use of this technology. Performance and clock frequency will vary depending on application workload and your hardware and software configurations. Intel's numbering is not a measurement of higher performance.
- ³ For storage drives, GB = 1 billion bytes. TB = 1 trillion bytes. Actual formatted capacity is less. Up to 30 GB (for Windows 10) is reserved for system recovery software.
- ⁴ Wireless is an optional add-on feature and requires wireless access point and Internet service. Availability of public wireless access points limited.
- ⁵ Mobile Broadband is an optional feature and requires factory configuration. Use requires separately purchased service contract. Check with service provider for coverage and availability in your area. Connection speeds will vary due to location, environment, network conditions, and other factors. 4G LTE not available on all products, and in all regions.
- ⁶ HD content required to view HD images.
- ⁷ ePrint requires an Internet connection to HP web-enabled printer. HP ePrint account registration required. For a list of eligible printers, supported documents and image types, and for complete details, see www.hp.com/go/businessmobileprinting.
- ⁸ Skype not available in China. Internet access required.
- ⁹ HP Touchpoint Manager requires purchase of a subscription and supports Android™, iOS and Windows 7 or higher operating systems and PCs, notebooks, tablets and smartphones from various manufacturers. Not available in all countries see www.hp.com/touchpoint for availability information.
- ¹⁰ HP Driver Packs, HP System Software Manager (SSM), HP BIOS Config Utility (BCU), and HP CIK for Microsoft SCCM are available as a free download from the HP manageability website: www.hp.com/go/clientmanagement.
- ¹¹ LANDesk is an optional feature sold separately. Managed devices must be connected to the management server. Location based functionality requires active LANdesk maintenance service. Wipe functionality performs a "Windows 8 Reset" and requires Windows 8. Lock performs a Windows "Lock Computer."
- ¹² HP BIOSphere features may vary depending on the PC platform & configuration.
- ¹³ BIOS Absolute Persistence module is shipped turned off, and will be activated when customers purchase and activate a subscription. Service may be limited. Check with Absolute for availability outside the U.S. The optional subscription service of Absolute Recovery Guarantee is a limited warranty. Certain conditions apply. For full details visit: <http://www.absolute.com/company/legal/agreements/computrace-agreement>. If Data Delete is utilized, the Recovery Guarantee payment is null and void. In order to use the Data Delete service, customers must first sign a Pre-Authorization Agreement and either create a PIN or purchase one or more RSA SecurID tokens from Absolute Software.
- ¹⁴ Microsoft Defender: opt in and Internet connection required for updates.
- ¹⁵ External power supplies, power cords, cables and peripherals are not low halogen. Service parts obtained after purchase may not be low halogen.

Learn more at
www.hp.eu/notebooks

Engage HP Financial Services

Explore monthly payment options and technology refresh plans that can provide more flexibility to help you meet your IT goals. More information on www.hp.com/go/hpfs.

Sign up for updates
www.hp.com/go/getupdated

© Copyright 2015. HP Development Company, L.P. The information contained herein is subject to change without notice. The only warranties for HP products and services are set forth in the express warranty statements accompanying such products and services. Nothing herein should be construed as constituting an additional warranty. HP shall not be liable for technical or editorial errors or omissions contained herein.

Bluetooth is a trademark of its proprietor and used by Hewlett-Packard Company under license. Intel and Core are trademarks of Intel Corporation in the U.S. and other countries. Qualcomm and Gobi are trademarks of Qualcomm Incorporated, registered in the United States and other countries. Trademarks of Qualcomm Incorporated are used with permission. For DTS patents, see <http://patents.dts.com>. Manufactured under license from DTS Licensing Limited. DTS, the Symbol, & DTS and the Symbol together are registered trademarks, and DTS Studio Sound is a trademark of DTS, Inc. © DTS, Inc. All Rights Reserved. USB Type-C™ and USB-C™ are trademarks of USB Implementers Forum. ENERGY STAR is a registered trademark of the U.S. Environmental Protection Agency. All other trademarks are the property of their respective owners.

