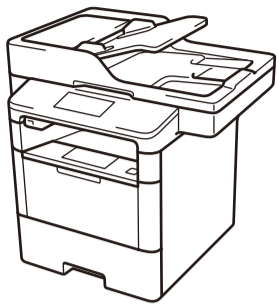




Unpack the machine and check the components



Drum Unit and Toner Cartridge Assembly
(pre-installed)

AC Power Cord

Telephone Line Cord
(For MFC models)

Quick Setup Guide

Product Safety Guide

Basic User's Guide
(only for certain models)

Installation CD-ROM

NOTE:

- Manuals in Spanish for this model are available on the Brother Solutions Center. (USA only): solutions.brother.com/manuals
- Los manuales en español de este modelo están disponibles en el Brother Solutions Center. (Solamente en los Estados Unidos): solutions.brother.com/manuals
- The available connection interfaces vary depending on the model.
- You must purchase the correct interface cable for the interface you want to use.

USB cable

We recommend using a USB 2.0 cable (Type A/B) that is no more than 6 feet (2 meters) long.

Network cable

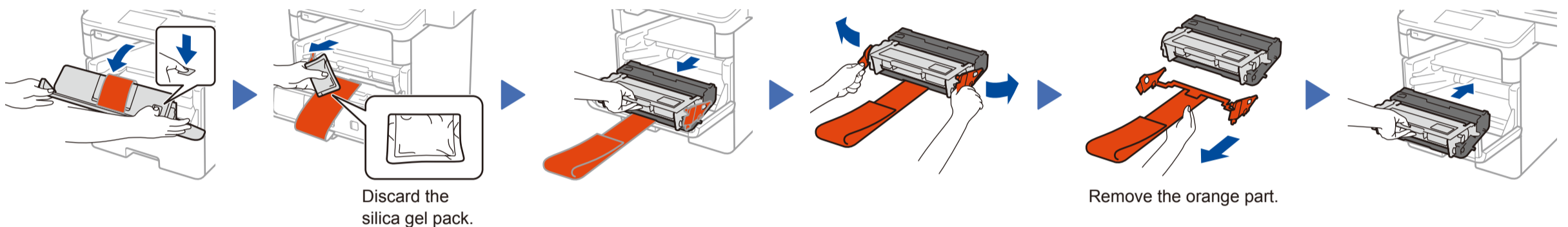
Use a straight-through Category 5 (or greater) twisted-pair cable.

- The illustrations in this Quick Setup Guide show the MFC-L6800DW.



Watch our Video FAQs for help with setting up your Brother machine: solutions.brother.com/videos.

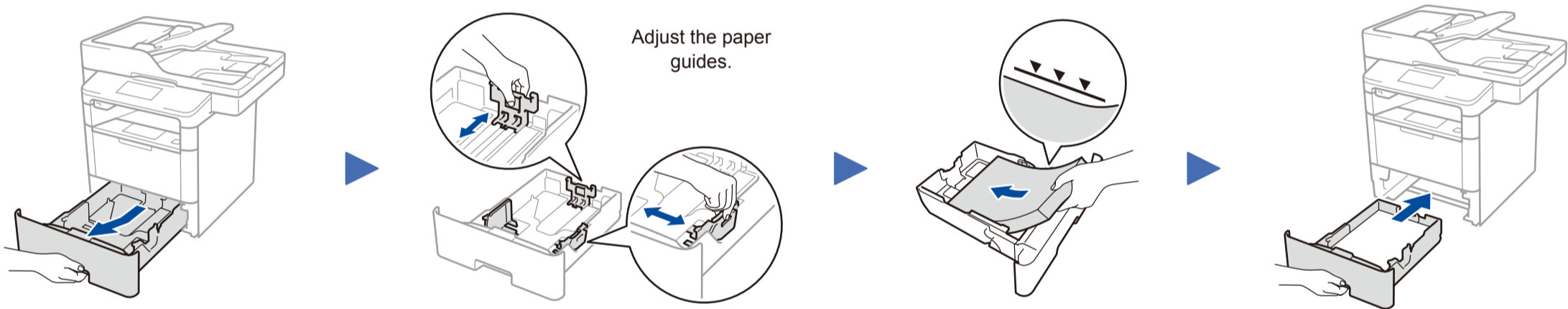
1 Remove the packing materials and install the drum unit and toner cartridge assembly



Discard the silica gel pack.

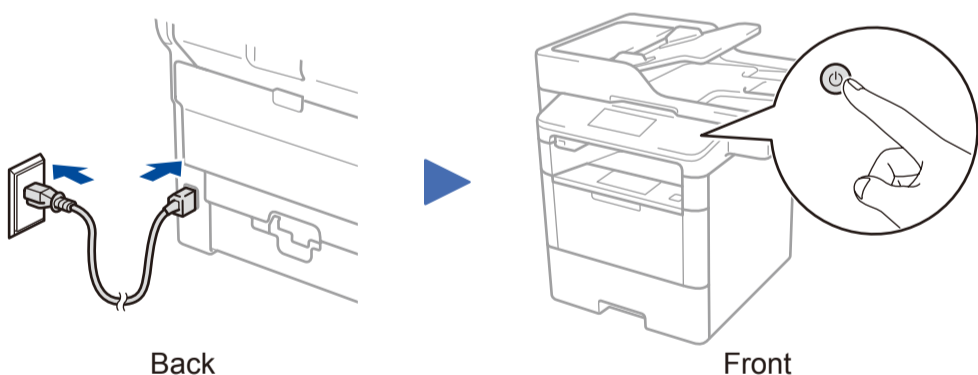
Remove the orange part.

2 Load paper in the paper tray



Adjust the paper guides.

3 Connect the power cord and turn on the machine

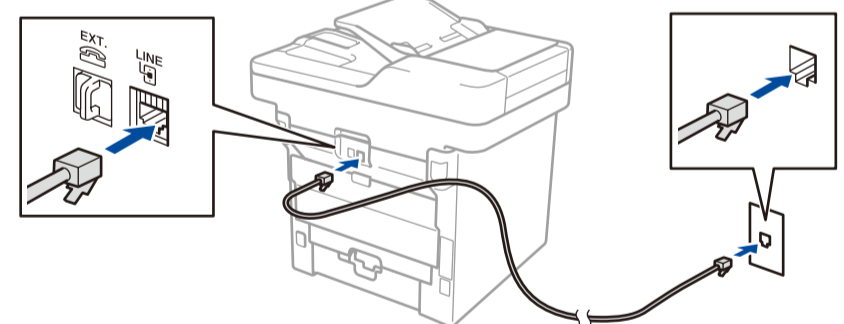


Back

Front

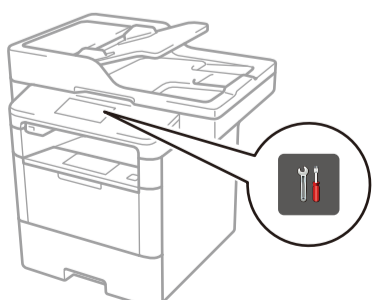
4 Connect the telephone line cord (for MFC models only)

If you do not plan to use the fax feature on this machine, go to step 5.



5 Select your language (if needed)

1. On the machine's Touchscreen, press [Settings] > [All Settings] > [Initial Setup] > [Local Language].
2. Press your language.
3. Press .



6 Configure the machine for faxing (for MFC models only)

If you do not plan to use the fax feature on this machine, go to step 7.

A. Set the date and time

- Press [Settings] > [All Settings] > [Initial Setup] > [Date & Time].
- Date**
1. Press [Date].
 2. Enter the last two digits for the year using the Touchscreen, and then press [OK].
 3. Enter the two digits for the month using the Touchscreen, and then press [OK].
 4. Enter the two digits for the day using the Touchscreen, and then press [OK].

Clock Type

1. Press [Clock Type].
2. Press [12h Clock] or [24h Clock].

Time

1. Press [Time].
2. Enter the time using the Touchscreen.
 - 12h Clock only
 - Press [AM/PM] to select [AM] or [PM].
3. Press [OK].
4. Press .

B. Set the Station ID

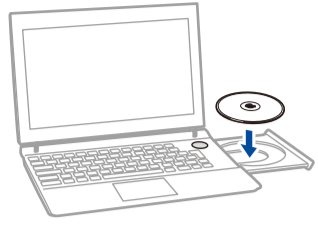
- Press [Settings] > [All Settings] > [Initial Setup] > [Station ID].
- Fax number**
1. Press [Fax].
 2. Enter your fax number (up to 20 digits) using the Touchscreen, and then press [OK].
- Telephone number**
1. Press [Tel].
 2. Enter your telephone number (up to 20 digits) using the Touchscreen, and then press [OK].
- Name**
1. Press [Name].
 2. Enter your name (up to 20 characters) using the Touchscreen, and then press [OK].
 3. Press .



7 Connect your machine and install software

Brother regularly updates firmware to add features and fix identified problems. To check for the latest firmware, visit solutions.brother.com/up1.

Windows® computer with CD-ROM drive



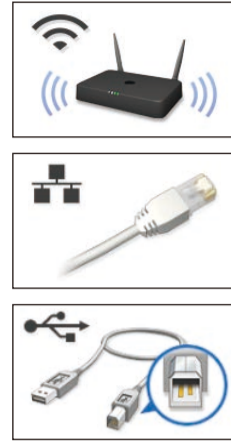
NOTE:
If the Brother screen does not appear automatically, click **Start** > **Computer (My Computer)**. (For Windows® 8: click the **File Explorer** icon on the taskbar, and then go to **Computer (This PC)**.)
Double-click the CD-ROM icon, and then double-click **start.exe**.

Macintosh/Windows® computer without CD-ROM drive



Download the full driver and software package from the Brother Solutions Center.
(Macintosh) solutions.brother.com/mac
(Windows®) solutions.brother.com/windows

Choose your Connection Type:



Follow the on-screen instructions to continue installation.

Follow the on-screen instructions to continue installation.

Finish

If using a wireless network connection:
When the **Wireless Device Setup** screen appears, select **Setup without a USB cable (Recommended)**.

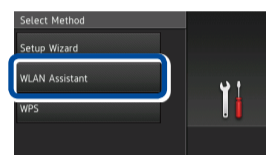


When instructed, go to your machine's LCD.

a. Press the **WiFi** icon on the LCD.



b. Press [WLAN Assistant].



Follow the on-screen instructions to continue installation.

Finish

NOTE:
• When finished, restart your computer.
• If connection is unsuccessful, see **?** *Cannot set up your machine?* below.

NOTE:
If the LCD screen is blank, press **[]** to wake up the device.

WiFi Alternate wireless configuration method (Setup Wizard)

Restart your wireless access point/router.

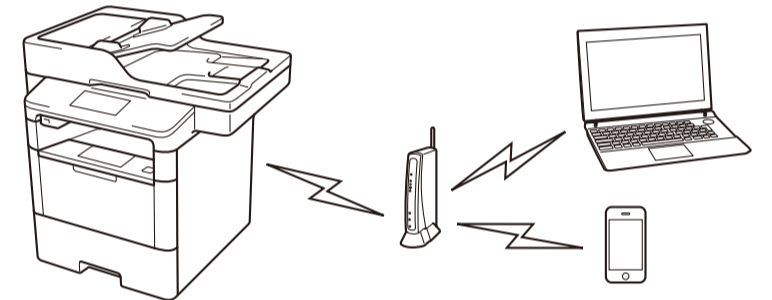


Find your SSID: XXXXXXXX
Network key: XXXX



Press **WiFi** > [Setup Wizard] > [Yes].

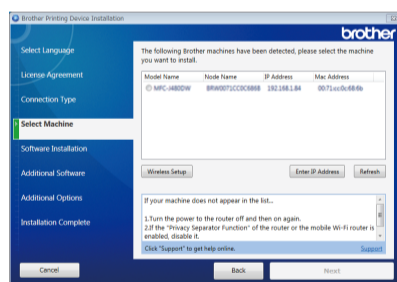
Select the SSID. Enter the Network key.



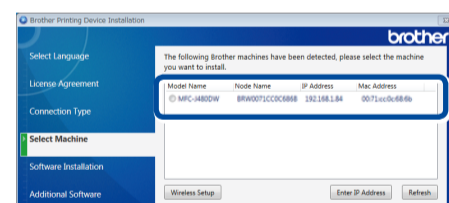
The LCD displays [Connected].

If you cannot find this information, ask your network administrator or wireless access point/router manufacturer.

To use with your computer, follow Step 7 until the **Select Machine** screen appears, listing all machines in your network.



Select your machine.



Follow the on-screen instructions to continue installation.

Finish

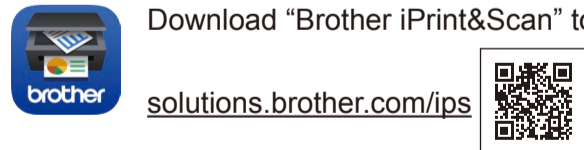
NOTE:
• When finished, restart your computer.
• If connection is unsuccessful, see **?** *Cannot set up your machine?* below.

To use with your mobile device, go to **Print and scan using your mobile device**.

Print and scan using your mobile device

Before printing from your mobile device, your machine must be configured according to step 7 or **WiFi Alternate wireless configuration method (Setup Wizard)**.

Download "Brother iPrint&Scan" to start using your machine with mobile devices.

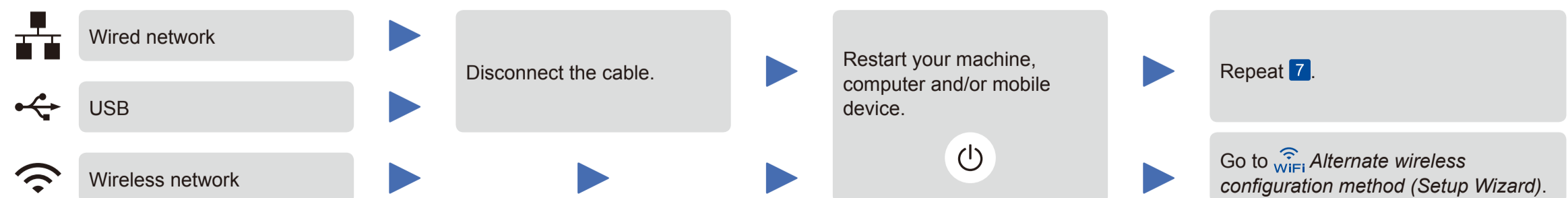


solutions.brother.com/ips



AirPrint is available for OS X and iOS users. For more information, see the *AirPrint Guide* on your model's **Manuals** web page. solutions.brother.com/manuals

? Cannot set up your machine?



NOTE:
If you repeat these steps and connection is still unsuccessful, please visit the Brother Solutions Center at: <http://support.brother.com>.

