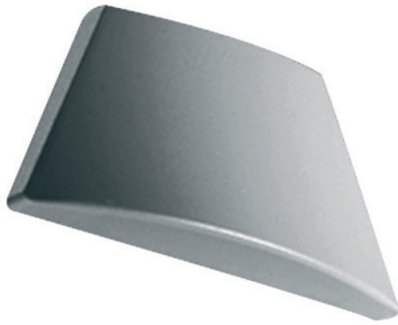


Maxos TL-D, trapeze reflectors and optics



9MX056 EP1-T WH (2PCS)

End piece for trapezium reflector 1 lamp

The sturdy trapeze reflectors for TL-D are designed primarily for applications in industry, supermarkets and shops. They are made of steel with a white or silver finish. The reflectors are optimized for electrical units holding 1 or 2 TL-D lamps and provide an excellent light output ratio. There are basic trapeze reflectors without an additional mirror inlay and trapeze reflectors with dedicated aluminum mirror inlays. These are designed for wide-beam, narrow-beam and asymmetrical wall-washing light distributions. Moreover, perforated and slotted trapeze reflectors (without mirror inlays) can be ordered for design reasons or to create an indirect uplighting effect. For glare reduction, the trapeze reflector can be equipped with a steel louver (L-T) that has a white or silver finish. If emergency lighting by means of separately connected orientation light units (E27-sockets) is required, special trapeze reflectors with a bigger cut-off must be used. The length of this reflector corresponds to that of the 58 W trunking length. A 36 W electrical unit plus the orientation light unit will fill this length. The reflectors are fixed to the electrical units via a simple click-in. The reflectors can be connected to each other in a line by means of an integrated connection at one end of the reflector. End plates for the beginning and end of the light line are available as accessories.

Product data

• General Information

Protection class IEC	-
Suspension accessories	No [-]

Mechanical accessories
Length
Packaging configuration

EP1-T [End piece for trapezium reflector 1 lamp]
- mm
(2PCS) [2 pieces]

PHILIPS

Maxos TL-D, trapeze reflectors and optics

Accessory colour White
Emergency lighting accessories No [-]
Product Family Code 9MX056

• Light Technical

Optical cover/lens type accessory No [-]

• Operating and Electrical

Electrical accessories No [-]
Circuit No [-]

• Mechanical and Housing

Dimensions (height x width x depth) NaN x NaN x NaN mm (NaN x NaN x NaN in)

• Approval and Application

Ingress protection code - [-]

• Product Data

Full product code 403073210833600
Order product name 9MX056 EP1-T WH (2PCS)
EAN/UPC – product 4030732108336
Order code 10833600
Numerator – quantity per pack 1
Numerator – packs per outer box 1
Material no. (12NC) 910683005526
Net weight (piece) 0.054 kg



© 2016 Philips Lighting Holding B.V.
All rights reserved.

Specifications are subject to change without notice. Trademarks are the property of Koninklijke Philips N.V. (Royal Philips) or their respective owners.

www.philips.com/lighting

2016, August 25
data subject to change