

Philips Norelco SH30/52  
Blade Refill  
Replacement Shaving heads

Fits all S2000 Shavers (S2xxx)

Fits all S3000 Shavers (S3xxx)

Fits all S1000 Shavers (S1xxx)

Fits 5000X (X5004 & X5006)



SH30/52

## Reboot your shave

Replace blades every 12 months to maintain peak performance

Within one year your shaver heads cut 4.5 million hairs on your face. Replace the shaver heads every 12 months to get back to optimal like-new performance. Philips Norelco SH30/52 Shaving Heads are compatible with Norelco Shaver Series 1000, 2000, 3000 and 5000X (X5004 & X5006).

### Easy to use

- Easy to replace shaving heads
- Replace your shaving heads in just two steps
- Reset your shaver to new

### Compatibility

- SH30 Blade Refills

**PHILIPS**  
**NORELCO**

## Replacement Shaving heads

Fits all S2000 Shavers (S2xxx) Fits all S3000 Shavers (S3xxx), Fits all S1000 Shavers (S1xxx), Fits 5000X (X5004 & X5006)

# Specifications

### Shaving heads

- Fits product type: Shaver series 3000 (S3\_\_\_), Shaver series 1000 (S1\_\_\_)
- Shaving heads per packaging: 3

### Cleaning

- Usage: Use cleaning spray HQ110

SH30/52

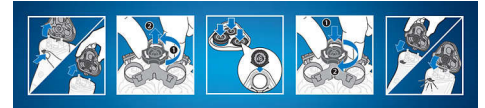
# Highlights

### Replacement reminder



The latest Philips shavers have an inbuilt replacement reminder in the form of a shaving unit symbol. This symbol will light up and indicate you when to replace shaving heads.

### Simple replacement



1. Open the shaver by pressing the "release" button;
2. Remove the retainer by turning the lock counterclockwise;
3. Take out the old shaving heads and carefully insert replacements; check that the heads align exactly in the setting;
4. Replace the retainer and secure it by turning the lock clockwise;
5. When you close the shaving head properly, you will hear it click into place.

### Reset your shaver to new



To get back to 100% performance, replace your shaving heads every 12 months.

### Compatibility



Philips Norelco SH30/52 Shaving Heads compatible with Norelco Shaver Series 1000, 2000, 3000 and 5000X. 3 Pack of Blades included



Issue date 2023-08-31

Version: 13.1.5

UPC: 0 75020 05667 2

© 2023 Koninklijke Philips N.V.  
All Rights reserved.

Specifications are subject to change without notice.  
Trademarks are the property of Koninklijke Philips N.V.  
or their respective owners.

[www.philips.com](http://www.philips.com)