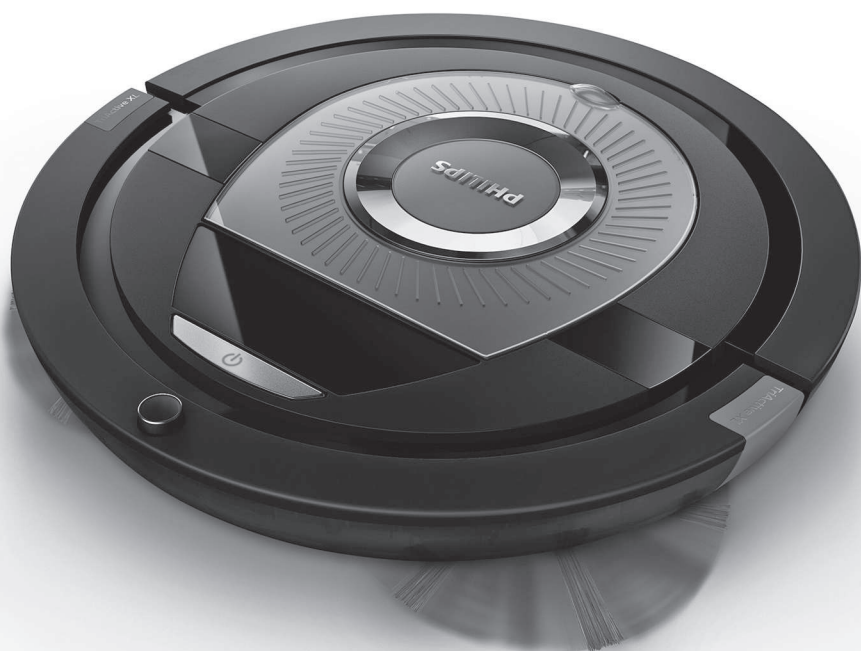
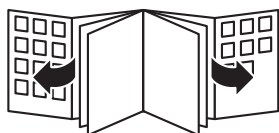
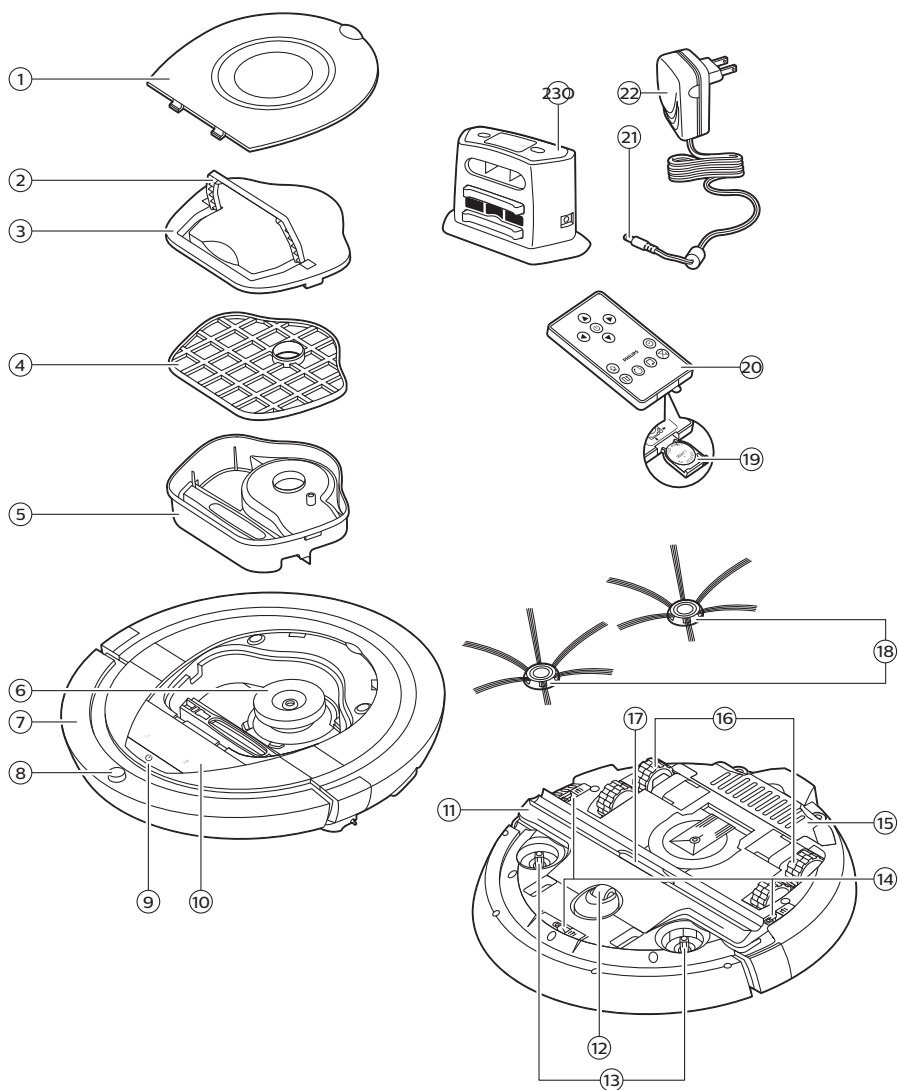


**PHILIPS**

FC8972, FC8776,  
FC8774, FC8772









**English 6**  
**简体中文 16**

## Introduction

Congratulations on your purchase and welcome to Philips! To fully benefit from the support that Philips offers, register your product at [www.philips.com/welcome](http://www.philips.com/welcome).

## General description (Fig. 1)

- 1 Top cover
- 2 Handle of dust container lid
- 3 Dust container lid
- 4 Filter
- 5 Dust container
- 6 Fan
- 7 Bumper
- 8 Docking station sensor
- 9 Start/stop button (to start or stop the robot)
- 10 Display
- 11 TriActive XL nozzle
- 12 Front wheel
- 13 Side brush shafts
- 14 Drop-off sensors
- 15 Battery compartment
- 16 Wheels
- 17 Suction opening
- 18 Side brushes
- 19 Battery holder
- 20 Remote control
- 21 Small plug
- 22 Adapter
- 23 Docking station

## Display and remote control

Display (Fig. 2):

- 1 Warning indicator
- 2 Dust container full indicator

Remote control (Fig. 3):

- 1 Navigation buttons and start/stop
- 2 Docking button
- 3 Cleaning time button
- 4 Cleaning mode buttons

## How your robot works

### What your robot cleans

This robot is equipped with features that make it a suitable cleaner to help you clean the floors in your home.

The robot is especially suitable for cleaning hard floors, such as wooden, tiled or linoleum floors. It may experience problems cleaning soft floors, such as carpet or rugs. If you use the robot on a carpet or rug, please stay close by the first time to see if the robot can deal with this type of floor. The robot also needs supervision when you use it on very dark or shiny hard floors.

## How your robot cleans

### Cleaning system

The robot has a 2-stage cleaning system to clean your floors efficiently.

- The two side brushes help the robot clean in corners and along walls. They also help to remove dirt from the floor and move it towards the suction opening (Fig. 4).
- The suction power of the robot picks up loose dirt and transports it through the suction opening into the dust container (Fig. 5).

### Cleaning patterns

In its auto cleaning mode, the robot uses an automatic sequence of cleaning patterns to clean each area of the room optimally. The cleaning patterns it uses are:

- 1 Z-pattern or zigzag pattern (Fig. 6)
- 2 Random pattern (Fig. 7)
- 3 Wall-following pattern (Fig. 8)
- 4 Spot-cleaning pattern (Fig. 9)

In its auto cleaning mode, the robot uses these patterns in a fixed sequence: z-pattern, random pattern, wall-following pattern, and spot-cleaning pattern.

When the robot has completed this sequence of patterns, it starts moving in Z-pattern again. The robot continues to use this sequence of patterns to clean the room until the rechargeable battery runs low, or until it is switched off manually.

**Note:** You can also select each mode individually by pressing the appropriate button on the remote control. For more details, see chapter 'Using your robot', section 'Cleaning modes'.

## How your robot avoids height differences

The robot has three drop-off sensors in its bottom. It uses these drop-off sensors to detect and avoid height differences such as staircases.

**Note:** It is normal for the robot to move slightly over the edge of a height difference, as its front drop-off sensor is located behind the bumper.

**Caution:** In some cases, the drop-off sensors may not detect a staircase or other height difference in time. Therefore monitor the robot carefully the first few times you use it, and when you operate it near a staircase or another height difference. It is important that you clean the drop-off sensors regularly to ensure the robot continues to detect height differences properly (see chapter 'Cleaning and maintenance' for instructions).

## Before first use

### Mounting the side brushes

- 1 Unpack the side brushes and place the robot upside down on a table or on the floor.
- 2 Push the side brushes onto the shafts on the bottom of the robot (Fig. 10).

**Note:** Make sure you attach the side brushes properly. Press them onto the shaft until you hear them lock into position with a click.

## Removing the protection tag from the remote control

The remote control works on a CR2025 coin-shaped battery. This battery is protected with a protection tag that has to be removed before use.

- 1 Pull the battery protection tag out of the battery compartment of the remote control (Fig. 11).  
Now the remote control is ready for use.

## Preparing for use

### Installing the docking station

- 1 Insert the small plug of the adapter into the socket on the docking station (1) and insert the adapter into the wall socket (2) (Fig. 12).
- 2 Place the docking station on a horizontal, level floor against a wall.

Note: Make sure that there are no obstacles or height differences 80 cm in front, 30 cm to the right and 100 cm to the left of the docking station (Fig. 13).

### Important note: deep sleep mode

In deep sleep mode, the robot does not respond at all when you press a button. To reactivate the robot when it is in deep sleep mode:

- 1 Press the start/stop button on the robot to bring the robot from deep sleep mode to standby mode.
- 2 Press the start/stop button on the robot (Fig. 14) or on the remote control to start the robot.
- 3 If the robot does not start cleaning, place it on the plugged-in docking station to recharge its rechargeable battery.

The robot enters deep sleep mode when you press the start/stop button for 3 seconds. It may also enter the deep sleep mode when its battery is empty. The battery may, for instance, run empty if the robot is unable to find its docking station.

## Charging

- When charging for the first time and when the rechargeable battery of the robot is empty, the charging time is four hours.
- When the rechargeable battery is fully charged, your robot can clean for up to 120 minutes.
- Your robot can only be charged on the docking station.

### Charging automatically during use

- 1 When the robot has finished cleaning or when only 15% of the battery power remains, it automatically searches for the docking station to recharge. When the robot searches for the docking station, the start/stop button flashes quickly (Fig. 15).
- 2 When the rechargeable battery is fully charged, the start/stop button lights up continuously (Fig. 16).

Note: The robot only searches for the docking station automatically when it started cleaning from the docking station.

### Charging on the docking station

- 1 Press the start/stop button on the robot.
- 2 Place the robot on the plugged-in docking station (Fig. 17).



- 3 The start/stop button starts flashing slowly (Fig. 18).
- 4 When the rechargeable battery is fully charged, the start/stop button lights up continuously (Fig. 16).

## Using your robot

### Preparing the room for a cleaning run

Before you start the robot on its cleaning run, make sure that you remove all loose and fragile objects from the floor (Fig. 19).

Also remove all cables, wires and cords from the floor.

### Starting and stopping

- 1 Press the start/stop button.
  - You can press the start/stop button on the robot (Fig. 14).
  - You can also press the start/stop button on the remote control (Fig. 20).
- 2 The start/stop button is continuously on and the robot starts cleaning (Fig. 21).
- 3 The robot cleans in the auto-cleaning mode until its battery runs low. In the auto-cleaning mode, it follows repeated sequences of Z-pattern, random, wall-following and spot-cleaning patterns (Fig. 22).

**Note:** To select an individual mode, press one of the mode buttons on the remote control. See section 'Cleaning mode selection' for more details.

- 4 When the battery runs low, the start/stop button starts flashing and the robot searches for the docking station to recharge (Fig. 15).
- 5 You can also press the start/stop button to interrupt or stop the cleaning run. If you press the start/stop button again and there is still enough energy in the rechargeable battery, the robot continues cleaning in the auto-cleaning mode.
- 6 To make the robot return to the docking station before the rechargeable battery runs low, press the docking button on the remote control (Fig. 23).

The start/stop button starts flashing and the robot searches for the docking station (Fig. 24).

**Note:** If there is still enough energy in the rechargeable battery, you can press the docking button on the remote control to make the robot return to the docking station. If the rechargeable battery is completely empty, you have to place the robot on the docking station manually.

## Operating the docking station

The docking station has two controls that can be used to operate the robot.

### Battery full and go button

If you press the battery full and go button on the docking station while the robot is charging, the robot starts cleaning as soon as the rechargeable battery is full (Fig. 25).

### 24h button

If you press the 24h button on the docking station, the docking station starts to count down the 24 hours until the next cleaning run. When the countdown is finished, the robot starts cleaning until its battery runs low and then returns to the docking station automatically to recharge (Fig. 26).

## 10 English

### Cleaning mode selection

Next to the auto-cleaning mode, this robot has four individual cleaning modes that can each be activated by pressing the appropriate button on the remote control.

#### Z-pattern mode

In Z-pattern mode, the robot cleans by making Z-shaped loops through the room to clean large areas (Fig. 27).

#### Random mode

In this mode, the robot cleans the room in a mixed pattern of straight and crisscross movements (Fig. 28).

#### Wall-following mode

In this mode, the robot follows the walls of the room to give the area alongside the walls an extra clean (Fig. 29).

#### Spot-cleaning mode

In this mode, the robot moves randomly on a small area to clean this area thoroughly (Fig. 30).

Note: The manually selected modes are only active for a couple of minutes. After that, the robot switches to auto-cleaning mode.

### Manual driving

- 1 Use the arrow buttons above and below and to the left and right of the start/stop button on the remote control to navigate the robot through the room (Fig. 31).

Note: Be careful when you drive the robot manually close to height differences and staircases.

Note: The vacuuming function and the side brushes only work when the robot is driven forward. The left, right or back buttons are only for maneuvering the robot.

### Using the cleaning time button

Press the cleaning time button on the remote control to make the robot clean for 35 minutes. When the cleaning time is finished, the robot returns to the docking station to recharge (Fig. 32).

### Signals and their meaning

The robot has a display with two indicators: a warning indicator and the dust container full indicator. The start/stop button gives light signals. The table below explains the meaning of the signals.

Signal	Meaning
The start/stop button is on continuously.	The robot is ready to clean.
The start/stop button flashes slowly.	The robot is charging.
The start/stop button flashes quickly.	The robot is searching for the docking station.
	The rechargeable battery of the robot is low.
The dust container full indicator lights up.	The dust container is full.
The warning indicator lights up.	The robot was lifted while it was cleaning.

Signal	Meaning
	The bumper of the robot is stuck.
	A wheel or side brush is stuck.
	The top cover is not present or is not closed properly.
	The robot cannot find the docking station.

## Clap response

The clap response is enabled when the robot enters sleep mode in the following situations:

- when it stops cleaning due to an error
- when it cannot find its docking station in 20 minutes

If you do not see the robot, you can locate it by clapping your hands once. The robot will respond by beeping and by lighting up all icons on its display.

## Cleaning and maintenance

### Emptying and cleaning the dust container

Empty and clean the dust container when the dust container full indicator lights up continuously.

- 1 Remove the cover (Fig. 33).
- 2 Pull up the handle of the dust container lid and lift the dust container out of the dust container compartment (Fig. 34).

**Note:** When you remove or reinsert the dust container, take care not to damage the blades of the motor fan.

- 3 Carefully lift the lid off the dust container (1) and take out the filter (2) (Fig. 35).
- 4 Shake the dust container over a dustbin to empty it. Clean the filter and the inside of the dust container with a cloth or a toothbrush with soft bristles. Also clean the suction opening in the bottom of the dust container (Fig. 36).

**Caution:** Do not clean the dust container and the filter with water or in the dishwasher.

- 5 Put the filter back into the dust container (1). Then place the lid on the dust container (2) (Fig. 37).
- 6 Put the dust container back into the dust container compartment and put the top cover back on the robot (Fig. 38).

**Caution:** Always make sure the filter is present inside the dust container. If you use the robot without the filter inside the dust container, the motor will be damaged.

### Cleaning the robot

To maintain good cleaning performance, you have to clean the drop-off sensors, the wheels, the side brushes and the suction opening from time to time.

- 1 Place the robot upside down on a flat surface.
- 2 Use a brush with soft bristles (e.g. a toothbrush) to remove dust or fluff from the drop-off sensors. (Fig. 39)

**Note:** It is important that you clean the drop-off sensors regularly. If the drop-off sensors are dirty, the robot may fail to detect height differences or staircases.

## 12 English

- 3 Use a brush with soft bristles (e.g. a toothbrush) to remove dust or fluff from the front wheel and side wheels (Fig. 40).
- 4 To clean the side brushes, grab them by the bristles and pull them off their shafts (Fig. 41).
- 5 Remove fluff, hairs and threads from the shaft and from the side brush with a soft brush (e.g. a toothbrush) or a cloth (Fig. 42).
- 6 Check the side brushes and the bottom of the robot for any sharp objects that could damage your floor.
- 7 After you have removed the side brushes from their shafts, undo the snap connections of the TriActive XL nozzle by inserting your fingers at the places marked with arrows and pull the TriActive nozzle off the robot (Fig. 43).
- 8 Clean the suction opening with a soft brush (e.g. a toothbrush) (Fig. 44).
- 9 Remove all visible dirt from the TriActive nozzle (Fig. 45).
- 10 Insert the snap hooks of the TriActive nozzle into the holes in the bottom of the robot (Fig. 46). Push the TriActive nozzle back into position. Check if the nozzle can move a few millimeters up and down freely.

# Replacement

## Ordering accessories

To buy accessories or spare parts, visit [www.philips.com/parts-and-accessories](http://www.philips.com/parts-and-accessories) or go to your Philips dealer. You can also contact the Philips Consumer Care Center in your country (see the international warranty leaflet for contact details).

## Replacing the filter

Replace the filter if it is very dirty or damaged. You can order a new filter under order number FC8012. See 'Emptying and cleaning the dust container' in chapter 'Cleaning and maintenance' for instructions on how to remove the filter from the dust container and how to place it in the dust container.

## Replacing the side brushes

Replace the side brushes after some time to ensure proper cleaning results.

**Note:** Always replace the side brushes when you notice signs of wear or damage. We also recommend that you replace both side brushes at the same time. You can order spare side brushes as a set under order number FC8013.

- 1 To replace the side brushes, grab the old side brushes by the bristles and pull them off their shafts (Fig. 41).
- 2 Push the new side brushes onto the shafts (Fig. 10).

## Replacing the rechargeable battery

The rechargeable battery of the robot may only be replaced by qualified service engineers. Take the robot to an authorized Philips service center to have the battery replaced when you can no longer recharge it or when it runs out of power quickly. You can find the contact details of the Philips Consumer Care Center in your country in the international warranty leaflet or on the website at [www.philips.com/support](http://www.philips.com/support).

## Replacing the battery of the remote control

The remote control works on a CR2025 coin-shaped battery. Replace the battery when the robot no longer responds when you press the buttons on the remote control.

- 1 Hold the remote control upside down. Push the release button on the battery holder and at the same time slide the battery holder out of the remote control (Fig. 47).
- 2 Remove the empty battery from the battery holder and place a new battery in the battery holder. Then slide the battery holder back into the remote control (Fig. 48).

## Removing the rechargeable battery

**Warning: Only remove the rechargeable battery when you discard the appliance. Make sure the battery is completely empty when you remove it.**

To remove the rechargeable battery, follow the instructions below. You can also take the robot to a Philips service center to have the rechargeable battery removed. Contact the Philips Consumer Care Center in your country for the address of a service center near you.

- 1 Start the robot from a place somewhere in the room and not from the docking station.
- 2 Let the robot run until the rechargeable battery is empty to make sure that the rechargeable battery is completely discharged before you remove it and dispose of it.
- 3 Undo the screws of the battery compartment lid and remove the lid (Fig. 49).
- 4 Lift out the rechargeable battery and disconnect it (Fig. 50).
- 5 Take the robot and the rechargeable battery to a collection point for electrical and electronic waste.

## Troubleshooting

This chapter summarizes the most common problems you could encounter with the appliance. If you are unable to solve the problem with the information below, visit [www.philips.com/support](http://www.philips.com/support) for a list of frequently asked questions or contact the Consumer Care Center in your country.

Problem	Possible cause	Solution
The robot does not start cleaning when I press the start/stop button.	The rechargeable battery is empty.	Charge the rechargeable battery (see chapter 'Preparing for use').
	The robot is in deep sleep mode.	Press the start/stop button once to reactivate the robot. When you press the start/stop button again the robot starts cleaning. If the rechargeable battery is empty, place the robot on the plugged-in docking station.
The robot does not respond when I press one of the buttons.	The robot's rechargeable battery is empty.	Place the robot on the plugged-in docking station. After a few seconds, the robot beeps and the display lights up.
The warning indicator flashes quickly.	One or both wheels are stuck.	Remove the fluff, hair, thread or wire that is caught around the wheel suspension.
	One or both side brushes are stuck.	Clean the side brushes (see chapter 'Cleaning and maintenance').

## 14 English

Problem	Possible cause	Solution
	The top cover is not present or is not closed properly.	When the top cover is not present or is not closed properly, the robot does not work. Place the top cover on the robot properly.
	The bumper is stuck.	Lift the robot so that its bumper comes free. Place the robot at some distance from the obstacle and press the start/stop button to make it resume cleaning.
	The robot was lifted while it was cleaning.	Place the robot on the floor. Then press the start/stop button to make the robot resume cleaning.
The robot does not clean properly.	The bristles of one or both side brushes are crooked or bent.	Soak the brush or brushes in warm water for a while. If this does not restore the bristles to their proper shape, replace the side brushes (see chapter 'Replacement').
	The filter in the dust container is dirty.	Clean the filter in the dust container with a cloth or a toothbrush with soft bristles. You can also clean the filter and dust container with a regular vacuum cleaner at a low suction power setting.
		If brushing or vacuuming does not help to clean the filter, replace the filter with a new one. We advise you to replace the filter at least once a year.
	The suction opening in the bottom of the dust container is clogged.	Clean the suction opening (see chapter 'Cleaning and maintenance').
	The front wheel is jammed with hair or other dirt.	Clean the front wheel (see chapter 'Cleaning and maintenance').
	The robot is cleaning a very dark or shiny surface, which triggers the drop-off sensors. This causes the robot to move in an unusual pattern.	Press the start/stop button and then move the robot to a lighter colored piece of the floor. If the problem continues to occur on lighter colored floors, please go to <a href="http://www.philips.com/support">www.philips.com/support</a> or contact the Consumer Care Center in your country.
	The robot is cleaning a floor that reflects sunlight quite strongly. This triggers the drop-off sensors and causes the robot to move in an unusual pattern.	Close the curtains to block sunlight from entering the room. You can also start cleaning when the sunlight is less bright.
The rechargeable battery can no longer be charged or runs empty very fast.	The rechargeable battery has reached the end of its life.	Have the rechargeable battery replaced by a Philips service center (see chapter 'Replacement').

Problem	Possible cause	Solution
The battery of the remote control runs empty too fast.	Perhaps you did not insert the correct type of battery.	For the remote control, you need a CR2025 coin-shaped battery. If the problem persists, go to <a href="http://www.philips.com/support">www.philips.com/support</a> or contact the Consumer Care Center in your country.
The robot is moving in circles.	The robot is in spot-cleaning mode.	This is normal behavior. The spot-cleaning mode can be activated when a lot of dirt is detected on the floor for a thorough clean. It is also part of the auto cleaning mode. After approximately one minute the robot resumes its normal cleaning pattern. You can also stop the spot-cleaning mode by selecting a different cleaning mode on the remote control.
The robot cannot find the docking station.	There is not enough room for the robot to navigate towards the docking station.	Try to find another place for the docking station. See 'Installing the docking station' in chapter 'Preparing for use'.
	The robot is still actively searching.	Give the robot around 20 minutes to return to the docking station.
	The robot was not started from the docking station.	If you want the robot to return to the docking station after a cleaning run, start it from the docking station.

## 简介

感谢您的惠顾，欢迎光临飞利浦！为了让您能充分享受飞利浦提供的支持，请在 [www.philips.com/welcome](http://www.philips.com/welcome) 上注册您的产品。

## 基本说明（图 1）

### 基本说明

- 1 上盖
- 2 集尘桶盖手柄
- 3 集尘桶盖
- 4 过滤网
- 5 集尘桶
- 6 风扇
- 7 缓冲型
- 8 底座传感器
- 9 启动/停止按钮（启动或停止吸尘器）
- 10 显示屏
- 11 TriActive XL 吸嘴
- 12 前轮
- 13 侧毛刷轴
- 14 跌落传感器
- 15 电池仓
- 16 滚轮
- 17 吸口
- 18 侧毛刷
- 19 电池舱
- 20 遥控器
- 21 小插头
- 22 适配器
- 23 底座

## 显示屏和遥控器

显示屏 (图 2):

- 1 警告指示灯
- 2 集尘桶满盛指示灯

遥控器 (图 3):

- 1 导航按钮和启动/停止
- 2 插接按钮
- 3 清洁时间按钮
- 4 清洁模式按钮



# 扫地机器人如何工作

## 扫地机器人清洁哪些物体

本扫地机器人具有许多功能，是一款适合帮助您在家中清洁地板的理想清洁工具。

此扫地机器人尤其适合清洁硬地板，例如木制、瓷砖或油毡地板。清洁软地板时可能会出现問題，例如地毯或地垫。如果您在地毯或地垫上使用扫地机器人，请在第一次使用之前先留心观察扫地机器人是否能够处理这种类型的地板。另外，当您在极暗或有光泽的坚硬地板上使用扫地机器人时，需要对其加以监控。

## 扫地机器人如何清洁

### 清洁系统

扫地机器人具有 2 重清洁系统来高效清洁地板。

- 两个侧毛刷有助于扫地机器人在角落中以及沿着墙壁进行清洁。它们还可帮助去除地板上的污垢，并将其移向吸口 (图 4)。
- 扫地机器人的吸力可吸入松动的污垢，然后通过吸口将污垢输送到集尘桶 (图 5)。

### 清洁方向图

在自动清洁模式下，扫地机器人会按清洁方向图的自动顺序来使用，以最佳的方式清洁房间内的各个区域。所使用的清洁方向图包括：

- 1 Z 方向图或之字形方向图 (图 6)
- 2 随机方向图 (图 7)
- 3 沿墙方向图 (图 8)
- 4 局部清洁方向图 (图 9)

在自动清洁模式下，扫地机器人以固定顺序使用这些方向图：Z 方向图、随机方向图、沿墙方向图和局部清洁方向图。

如果扫地机器人已按此顺序使用完方向图，则将重新以 Z 方向图开始移动。扫地机器人会继续按该顺序使用方向图来清洁房间，直至充电电池的电量不足或直至将其手动关闭。

注意：您还可以按 App 控制器上的相应按钮，单独选择各个模式。有关详细信息，请参阅“使用扫地机器人”一章中的“清洁模式”部分。

## 扫地机器人如何避开高度差

扫地机器人底部配有三个跌落传感器。扫地机器人使用这些跌落传感器检测和避开楼梯等有高度差的地方。

注意：扫地机器人轻轻移动以越过高度差的边缘是正常现象，因为正面的跌落传感器位于缓冲装置后面。

**警告：**在某些情况下，跌落传感器可能无法及时检测到楼梯或其他有高度差的地方。因此，在最初几次使用以及在楼梯或其他有高度差的地方附近使用时，应密切监控扫地机器人的工作。务必定期清洁跌落传感器，以确保扫地机器人能继续正确检测到高度差（有关说明，请参阅“清洁和保养”一章）。

## 首次使用之前

### 安装侧毛刷

- 1 打开侧毛刷包装，将智能自动真空吸尘器翻转过来，置于桌子或地板上。
- 2 将侧毛刷推入智能自动真空吸尘器 (图 10)底部的轴上。

**注意：**确保您已正确安装侧毛刷。将侧毛刷按在轴上，直至您听到其咔哒一声锁定到位。

### 取下遥控器上的保护贴

遥控器由 CR2025 纽扣电池供电。该电池采用保护贴保护，使用前须取下。

- 1 抽出遥控器 (图 11)电池仓中的电池保护贴。

遥控器就可以使用了。

## 使用准备

### 安装底座

- 1 将适配器的小插头插入底座上的插座 (1)，将适配器插入电源插座 (2) (图 12)。
- 2 将底座放在靠墙的水平地板上。

**注意：**确保底座 (图 13)正面 80 厘米、右侧 30 厘米、左侧 100 厘米没有障碍物或高度差。

### 重要事项：深度睡眠模式

如果智能自动真空吸尘器处于深度睡眠模式，则按下按钮后不会有任何反应。要重新激活处于深度睡眠模式的智能自动真空吸尘器：

- 1 按智能自动真空吸尘器上的启动/停止按钮，将其从深度睡眠模式切换到待机模式。
- 2 按智能自动真空吸尘器 (图 14)或遥控器上的启动/停止按钮，即可启动智能自动真空吸尘器。
- 3 如果智能自动真空吸尘器没有开始清洁，请将其置于接通电源的底座上，为充电电池充电。

按住启动/停止按钮 3 秒钟，智能自动真空吸尘器将进入深度睡眠模式。当电池电量耗尽时，智能自动真空吸尘器也会进入深度睡眠模式。如果智能自动真空吸尘器无法找到其底座，则电池可能会出现电量耗尽等情况。

## 充电

### 充电

- 首次充电及智能自动真空吸尘器的充电电池电量耗尽时，需充电 4 小时。
- 充电电池充满电后，吸尘器可以清洁长达 120 分钟。
- 智能自动真空吸尘器仅能置于底座上充电。

### 使用期间自动充电

- 1 当智能自动真空吸尘器完成清洁或电池电量仅剩 15% 时，它会自动搜索底座进行充电。当智能自动真空吸尘器搜索底座时，启动/停止按钮将快速闪烁 (图 15)。
- 2 当充电电池充满电时，启动/停止按钮将持续 (图 16)亮起。

**注意：** 只有从底座开始清洁时，智能自动真空吸尘器才会自动搜索底座。

### 在底座上充电

- 1 按扫地机器人上的启动/停止按钮。
- 2 将扫地机器人置于接通电源的底座 (图 17)上。
- 3 启动/停止按钮开始缓慢闪烁 (图 18)。
- 4 当充电电池充满电时，启动/停止按钮将持续亮起 (图 16)。

## 使用扫地机器人

### 准备房间以进行清洁操作

在启动扫地机器人进行清洁操作之前，确保清除地板上的 (图 19)所有散乱和易碎物体。

另外，移除地板上的所有电缆、电线和绳索。

### 开始和停止

- 1 按启动/停止按钮。
  - 您可以按吸尘器上的 (图 14)启动/停止按钮。
  - 您也可以按遥控器上的 (图 20)启动/停止按钮。
- 2 启动/停止按钮持续亮起，吸尘器开始清洁 (图 21)。
- 3 吸尘器以自动清洁模式进行清洁，直至电池电量不足。在自动清洁模式下，吸尘器按照 Z 方向图、随机、沿墙和局部清洁方向图 (图 22)的重复顺序进行清洁。

## 20 简体中文

注意：要选择单独模式，请按遥控器上的任一模式按钮。有关详细信息，请参阅“清洁模式选择”。

- 4 如果电池电量不足，启动/停止按钮将开始闪烁，吸尘器会搜索底座进行充电 (图 15)。
- 5 您也可以按启动/停止按钮中断或停止清洁操作。如果再次按启动/停止按钮且充电电池仍有足够的电量，则吸尘器将继续以自动清洁模式进行清洁。
- 6 要使吸尘器在充电电池电量不足前返回底座，请按遥控器上的插接按钮 (图 23)。启动/停止按钮开始闪烁，同时吸尘器会搜索底座 (图 24)。

注意：如果充电电池仍有足够的电量，您可以按遥控器上的插接按钮使智能自动真空吸尘器返回到底座。如果充电电池的电量完全耗尽，则必须将智能自动真空吸尘器手动放回底座。

### 操作底座

底座有两个可用于操作扫地机器人控件。

#### 电池电量充满并启动按钮

如果您在扫地机器人充电时按底座上的电池电量充满并启动按钮，则扫地机器人会在充电电池充满电 (图 25)后立即开始清洁。

#### 24 小时按钮

如果您按底座上的 24 小时按钮，则底座将开始 24 小时倒计时，直至下次清洁操作为止。倒计时结束后，扫地机器人将开始清洁，直至电池电量不足，然后自动返回到底座进行充电 (图 26)。

### 清洁模式选择

#### 清洁模式选择

除了自动清洁模式，此吸尘器还提供四种单独清洁模式，每种模式均可通过按遥控器上的相应按钮启动。

#### Z 方向图模式

在 Z 方向图模式下，吸尘器将在整个房间中进行 Z 形环状运动以清洁大片区域 (图 27)。

#### 随机模式

在该模式下，吸尘器将使用直线运动和交叉运动 (图 28)的混合模式清洁房间。

#### 沿墙模式

在该模式下，吸尘器将沿着房间的墙壁对墙边区域进行特别清洁 (图 29)。

#### 局部清洁模式

在该模式下，吸尘器在小区域内随机移动以彻底 (图 30)清洁这个区域。

注意： 手动选定的模式仅处于启用状态数分钟。 之后，吸尘器会切换到自动清洁模式。

手动驱动

- 1 使用遥控器启动/停止按钮的上、下、左、右箭头按钮在房间 (图 31)内对智能自动真空吸尘器进行导航。

注意： 当您手动驱动吸尘器靠近有高度差的地方和楼梯时，请小心谨慎。

注意： 吸尘功能和侧毛刷只有在吸尘器向前驱动时才可用。 左右或后退按钮仅用于操纵吸尘器。

使用清洁时间按钮

按遥控器上的清洁时间按钮使吸尘器清洁 35 分钟。 清洁时间结束后，吸尘器会返回底座进行充电 (图 32)。

信号及其含义

吸尘器配有带两个指示灯的显示屏： 警告指示灯和集尘桶已满指示灯。 启动/停止按钮发出指示灯信号。 下表说明了这些信号的含义。

信号	含义
启动/停止按钮持续亮起。	吸尘器已做好清洁准备。
启动/停止按钮缓慢闪烁。	吸尘器正在充电。
启动/停止按钮快速闪烁。	吸尘器正在搜索底座。
	吸尘器的充电电池电量不足。
集尘桶已满指示灯亮起。	集尘桶已满。
警告指示灯亮起。	清洁时吸尘器被提起。
	吸尘器的缓冲装置被卡住。
	滚轮或侧毛刷被卡住。
	上盖不存在或未盖好。
	吸尘器无法找到底座。

拍手响应

- 在以下情况下，拍手响应会在扫地机器人进入睡眠模式时启用：
- 当扫地机器人因出错而停止清洁时

## 22 简体中文

- 当扫地机器人无法在 20 分钟内找到其底座时

如果您未见到扫地机器人，则只需拍一次手即可以找到它。扫地机器人将通过发出蜂鸣音以及点亮显示屏上的所有图标做出响应。

## 清洁和保养

### 倒空并清洁集尘桶

当手机app中提示集尘桶装满时，倒空并清洁集尘桶。

- 1 取下盖子 (图 33)。
- 2 向上拉集尘桶盖手柄，从集尘桶仓 (图 34)中提出集尘桶。

**注意：** 取下或重新插入集尘桶时，小心不要损坏马达风扇的刀片。

- 3 小心地提起集尘桶的盖子 (1) 并取出滤网 (2) (图 35)。
- 4 在垃圾箱上晃动集尘桶将其倒空。用布或软毛牙刷清洁滤网和集尘桶内部。另外清洁集尘桶 (图 36)底部的吸口。

**警告：** 切勿用水或在洗碗机中清洁集尘桶和滤网。

- 5 将滤网放回集尘桶中 (1)。然后将盖子放在集尘桶上 (2) (图 37)。
- 6 将集尘桶放回集尘桶仓，盖好扫地机器人 (图 38)的上盖。

**警告：** 务必确保集尘桶内已放置好滤网。如果您在集尘桶内未放置滤网的情况下使用扫地机器人，马达会受损。

### 清洁扫地机器人

为保持良好的清洁效果，您必须经常清洁跌落传感器、滚轮、侧毛刷和吸口。

- 1 将吸尘器倒置在平面上。
- 2 使用带柔软刷毛的毛刷（例如牙刷）清除跌落传感器 (图 39)上的灰尘和绒毛。

**注意：** 务必定期清洁跌落传感器。如果跌落传感器变脏，吸尘器可能无法检测到高度差或楼梯。

- 3 使用软毛刷（例如牙刷）清除前轮和侧轮 (图 40)上的灰尘和绒毛。
- 4 要清洁侧毛刷，请抓住刷毛并将其从轴 (图 41)上取下。
- 5 使用柔软的毛刷（例如牙刷）或布 (图 42)清除轴和侧毛刷中的绒毛、毛发和线头。刷子（如牙刷）或抹布 (图 42)。
- 6 检查吸尘器的侧毛刷和底部是否存在可能会损坏地板的尖锐物体。
- 7 当您从侧毛刷轴上取下侧毛刷后，将手指插入标有箭头的地方以解开 TriActive XL 吸嘴的扣合式连接，并将 TriActive 吸嘴从吸尘器上拉出 (图 43)。
- 8 用软刷（例如牙刷 (图 44)）清洁吸口。
- 9 去除 TriActive 吸嘴 (图 45)上所有肉眼可见的灰尘。

10 将 TriActive 吸嘴的安全钩插入吸尘器 (图 46) 底部的孔中。将 TriActive 吸嘴推回原位。检查吸嘴是否可以自由上下移动几毫米。

## 更换

### 订购配件

如需购买附件或备件，请访问 [www.philips.com/parts-and-accessories](http://www.philips.com/parts-and-accessories) 或联系您的飞利浦经销商。您还可以联系所在国家/地区的飞利浦客户服务中心（请参阅国际保修卡了解详细联系信息）。

### 更换过滤器

如果滤网很脏或已损坏，请进行更换。您可以通过订购号 FC8012 订购新滤网。有关如何从集尘桶中取出滤网以及如何将滤网放入集尘桶的说明，请参阅“清洁和保养”一章中的“倒空并清洁集尘桶”。

### 更换侧毛刷

一段时间后，请更换侧毛刷，以确保正常的清洁效果。

**注意：**发现磨损或损坏迹象时务必更换侧毛刷。另外，建议您同时更换两个侧毛刷。您可以通过订购号 FC8013 订购一组备用侧毛刷。

- 1 如需更换侧毛刷，请抓住旧侧毛刷的刷毛将其从轴 (图 41) 上拆下。
- 2 将新侧毛刷推到轴 (图 10) 上。

### 更换充电电池

只有具备资格的服务工程师，才能更换智能自动真空吸尘器的充电电池。当充电电池无法继续充电或耗电很快时，请将智能自动真空吸尘器送往授权的飞利浦服务中心，以更换电池。您可以在国际保修卡或 [www.philips.com/support](http://www.philips.com/support) 网站上找到您所在国家/地区的飞利浦客户服务中心的详细联系信息。

### 更换遥控器的电池

遥控器由 CR2025 纽扣电池供电。按遥控器上的按钮，吸尘器不再响应时，请更换电池。

- 1 将遥控器翻转过来。推电池仓上的释放钮，同时将电池仓从遥控器 (图 47) 中滑出。
- 2 从电池仓中取出电量耗尽的电池，装入新电池。然后将电池仓滑回遥控器 (图 48)。

## 拆下充电电池

**警告：** 仅在丢弃产品时取出充电电池。在废弃器具前，必须将电池从器具中取出；在取出电池时，器具必须要断电；电池应安全地处置。

按照以下步骤拆下充电电池。您也可以将扫地机器人送往飞利浦服务中心，由其拆下充电电池。您可联系所在国家/地区的飞利浦客户服务中心，获取您附近的服务中心地址。

- 1 启动扫地机器人时，应将其置于房间内，不可从底座上启动扫地机器人。
- 2 让扫地机器人运转，直至充电电池电量完全耗尽，以确保在您取出并弃置充电电池前，其已完全放电。运转，直至充电电池电量完全耗尽，以确保在您取出并弃置充电电池前，其已完全放电。
- 3 拧下电池仓的螺丝，然后取下仓盖 (图 49)。
- 4 取出充电电池并断开连接 (图 50)。
- 5 将扫地机器人和充电电池送往电子电器垃圾回收点。

## 故障种类和处理方法

本章归纳了使用本产品时最常见的一些问题。如果您无法根据以下信息解决问题，请访问 [www.philips.com/support](http://www.philips.com/support) 查阅常见问题列表，或联系您所在国家/地区的客户服务中心。

## 故障种类和解决方法

问题	可能的原因	解决方法
按启动/停止按钮时 智能自动真空吸尘器 无法开始清洁。	充电电池的电量已耗尽。	为充电电池充电（请参阅“使用准备”一章）。
	智能自动真空吸尘器处于深度睡眠模式。	按一下启动/停止按钮以重新激活智能自动真空吸尘器。再次按下启动/停止按钮，智能自动真空吸尘器将开始清洁工作。如果充电电池的电量完全耗尽，请将智能自动真空吸尘器置于接通电源的底座上。
随意按下一个按钮 时，智能自动真空吸 尘器没有反应。	智能自动真空吸尘器的 充电电池电量已耗尽。	将智能自动真空吸尘器置于接通电源的底座上。几秒钟后，智能自动真空吸尘器发出“哔”声，显示器亮起。



问题	可能的原因	解决方法
警告指示灯快速闪烁。	一个或多个滚轮被卡住。	清除滚轮悬架周围吸附的绒毛、毛发、线头或线丝。
	一个或两个侧毛刷被卡住。	清洁侧毛刷（请参阅“清洁和保养”一章）。
	没有盖上上盖或上盖未盖好。	没有盖上上盖或上盖未盖好时，智能自动真空吸尘器无法工作。盖好智能自动真空吸尘器的上盖。
	缓冲装置被卡住。	提起智能自动真空吸尘器以释放其缓冲装置。将智能自动真空吸尘器放置在远离障碍物的地方，按启动/停止按钮使其继续清洁。
智能自动真空吸尘器无法正确清洁。	清洁时智能自动真空吸尘器被提起。	将智能自动真空吸尘器置于地板上。然后按启动/停止按钮使智能自动真空吸尘器继续清洁。
	一个或两个侧毛刷的刷毛已变形或弯曲。	将毛刷在温水中浸泡一会儿。如果这样做不能使刷毛复原，则更换侧毛刷（请参阅“更换”一章）。
	集尘盒中的滤网变脏。	用布或软毛牙刷清洁集尘桶中的滤网。您还可以在低吸力设置下使用普通真空吸尘器清洁滤网和集尘桶。
		如果刷洗或吸尘无助于清洁滤网，请用新滤网更换。我们建议您至少每年更换一次滤网。
	集尘盒底部吸口被堵塞。	清洁吸口（请参阅“清洁和保养”一章）。
	前轮被毛发或其他污垢卡住。	清洁前轮（见“清洁和保养”一章）。
	智能自动真空吸尘器在清洁颜色极深或有光泽的地面时会触发跌落传感器。这将导致智能自动真空吸尘器沿异常的方向图移动。	按启动/关闭按钮，然后将智能自动真空吸尘器移至颜色较浅的地板。如果在颜色较浅的地板上问题仍然存在，请访问 <a href="http://www.philips.com/support">www.philips.com/support</a> 或联系您所在国家/地区的客户服务中心。

问题	可能的原因	解决方法
	智能自动真空吸尘器正在清洁强烈反射太阳光的地板。这可能会触发跌落传感器，导致智能自动真空吸尘器沿异常的方向图移动。	关闭窗帘，阻止太阳光射入房间。您还可以在阳光不那么明亮时开始清洁。
充电电池无法充电或耗电极快。	充电电池达到了其寿命的终点。	充电电池应由飞利浦服务中心更换（请参阅“更换”一章）。
遥控器的电池耗电太快。	可能是您没有插入正确类型的电池。	遥控器必须使用 CR2025 纽扣电池。如果问题仍然存在，请访问 <a href="http://www.philips.com/support">www.philips.com/support</a> 或联系您所在国家/地区的客户服务中心。
智能自动真空吸尘器在绕圈运动。	智能自动真空吸尘器处于局部清洁模式。	这属于正常现象。彻底清洁过程中在地板上检测到大量灰尘时，可能激活局部清洁模式。这也是自动清洁模式的一部分。大约一分种后，智能自动真空吸尘器恢复正常清洁模式。您还可以通过在遥控器上选择不同的清洁模式来停止局部清洁模式。
智能自动真空吸尘器无法找到底座。	没有足够的空间供智能自动真空吸尘器导航到底座。	请尝试将底座放置到其他地方。请参阅“使用准备”一章中的“安装底座”。
	智能自动真空吸尘器仍在积极搜索。	给智能自动真空吸尘器约 20 分钟时间让其返回到底座。
	智能自动真空吸尘器不是从底座启动的。	如果您希望智能自动真空吸尘器在清洁操作之后返回到底座，请从底座启动智能自动真空吸尘器。



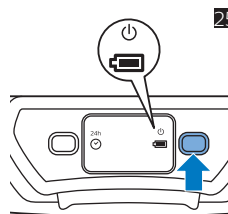
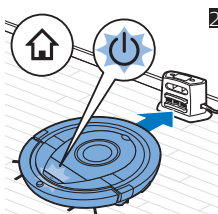
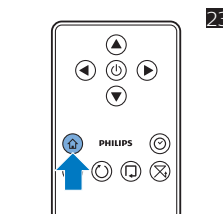
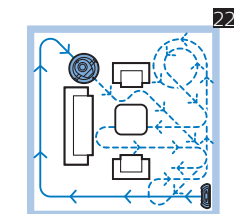
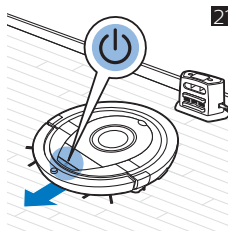
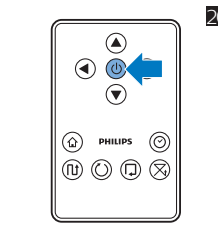
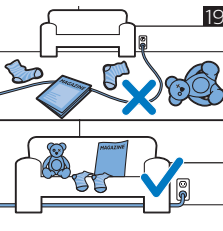
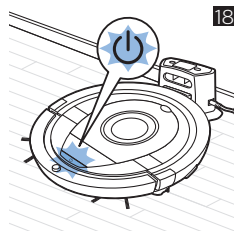
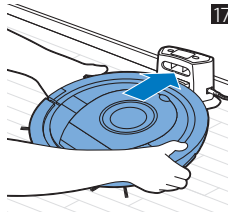
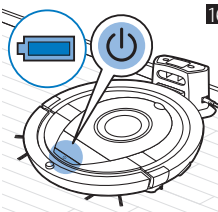
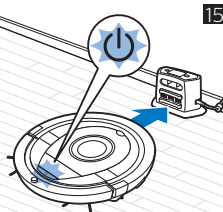
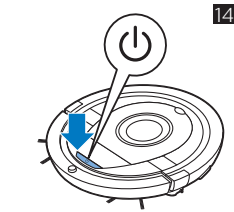
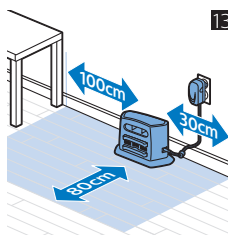
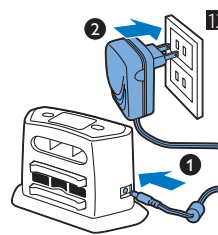
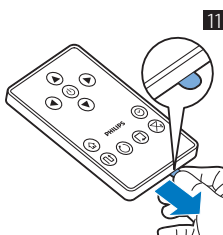
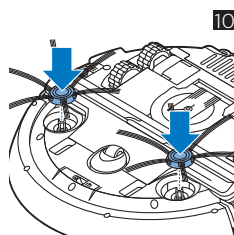
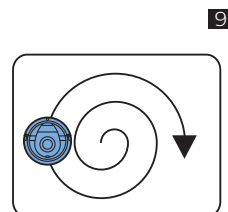
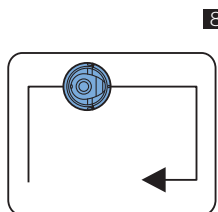
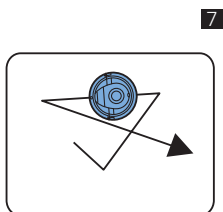
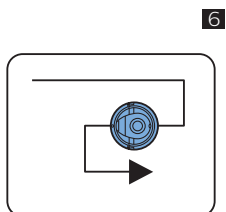
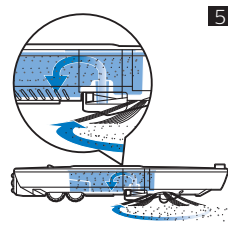
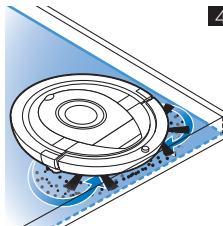
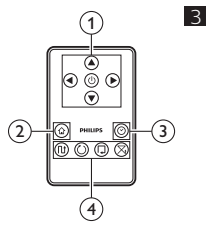
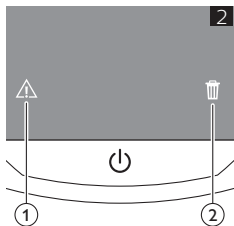


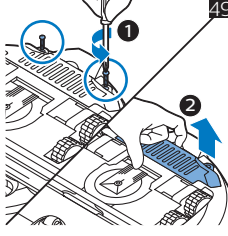
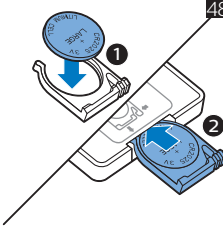
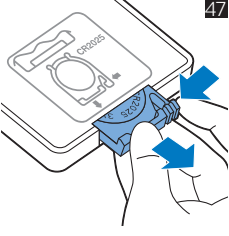
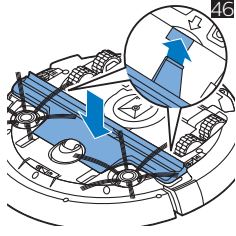
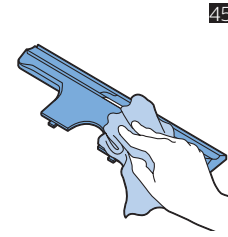
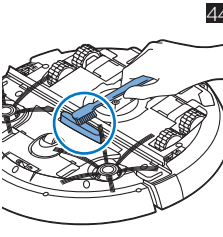
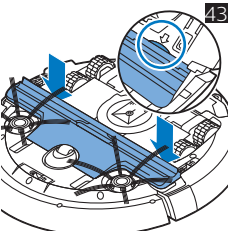
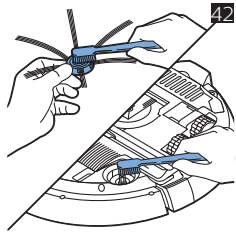
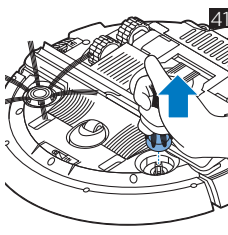
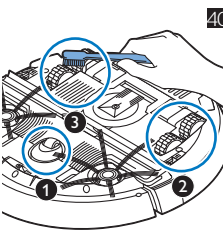
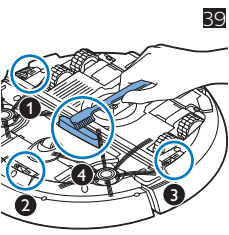
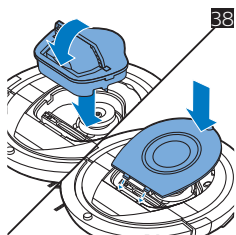
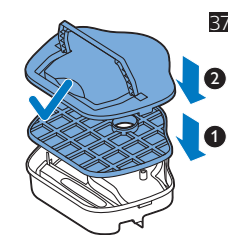
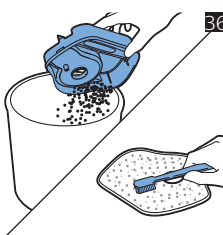
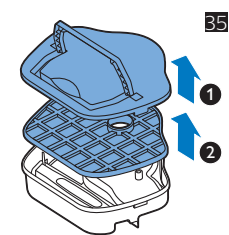
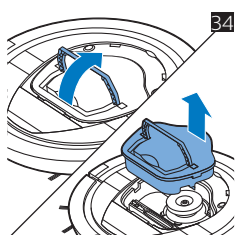
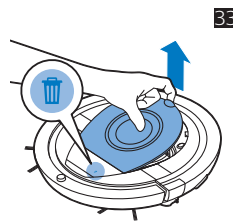
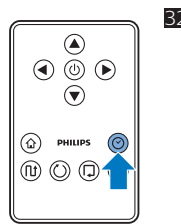
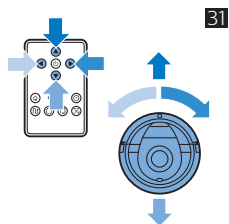
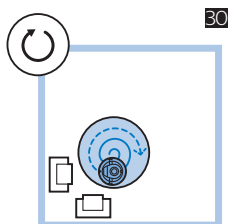
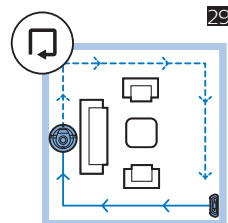
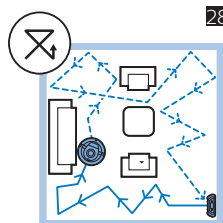
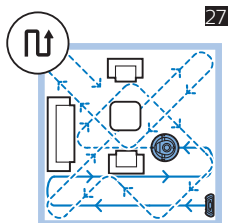
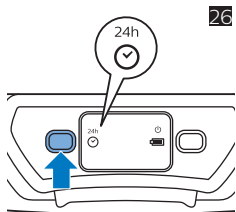
— |

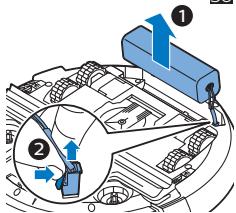
| —

— |

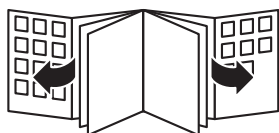
| —











4222.003.4217.3 7/9/2018

> 75% 循环再造纸

保留备用



>75% recycled paper  
>75% papier recyclé