

AC 2600

Wireless Gigabit VDSL/ADSL Modem Router
Archer VR2600

Highlights

- **Industry-leading Wi-Fi Speeds** – 800Mbps on 2.4GHz+1733Mbps on 5GHz
- **MU-MIMO Technology** – Operates up to 3x faster by running MU-MIMO to serve multiple devices at once instead of one at a time
- **Versatile Connectivity** – Fully compatible with VDSL2/ADSL2+, fiber/cable EWAN and 3G/4G dongle connections.
- **1.4GHz Dual-core Processor** – Ensures no interruption while processing multiple wired or wireless tasks simultaneously
- **Maximum Range** – 4 dual band antennas and enhanced beamforming provide maximum omni-directional wireless coverage
- **Easy Interactivity** – TP-LINK Tether App and web UI provide an easy way to access and manage the modem router on your smart phone as well as PC



AC2600



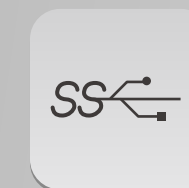
MU-MIMO



Dual-Core
1.4 GHz CPU



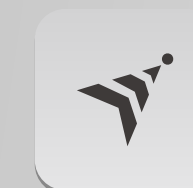
Gigabit
Port



Dual USB
3.0 Ports



3G/4G
Connection



Beamforming
Technology



TP-LINK
Tether APP

Features



Speed

- **Blazing Fast Wireless Speed** – Combined wireless speeds up to 2.53Gbps at 2.4GHz & 5GHz bands concurrently
- **Support 802.11 ac** – Offering 3 times faster data rate than 802.11n in a single stream
- **Gigabit Wired Speed** – Full shielded gigabit ports ensure ultra-fast data transfer speeds



Efficiency

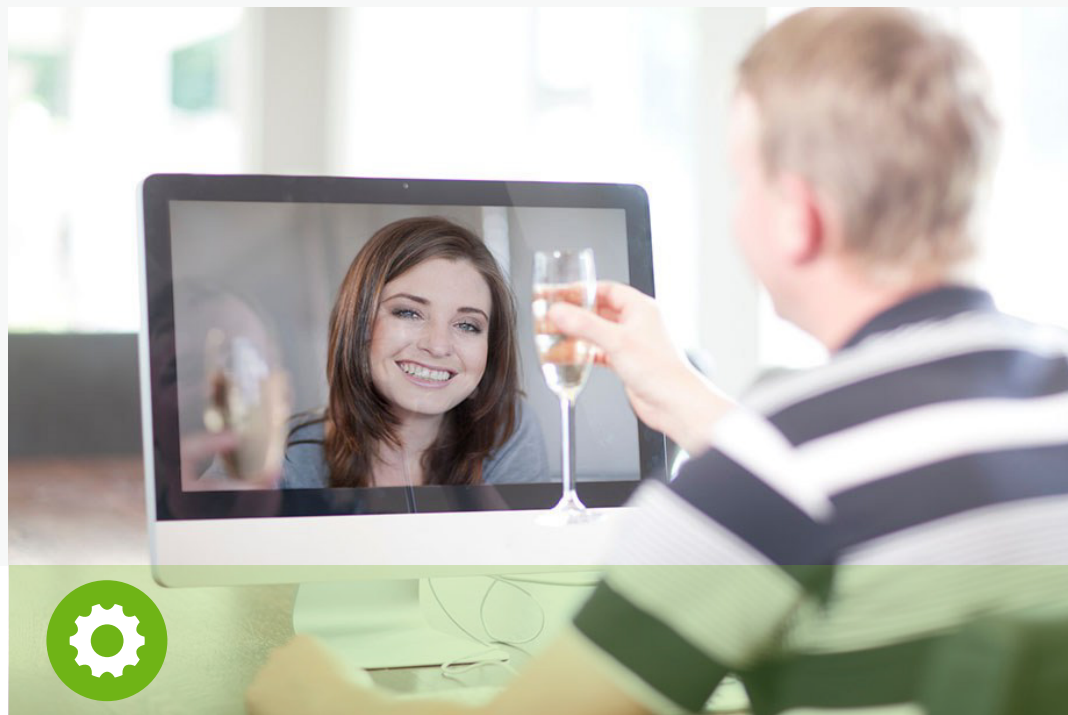
- **MU-MIMO Technology** – MU-MIMO technology can serve multiple devices synchronously to improve utilization
- **1.4GHz Dual-Core CPU** – 1.4GHz dual-core processor dramatically boosts data transfer rate
- **Simultaneous Dual Band** – Reduces interference for more stable connections



Wi-Fi Range

- **Ultimate Range & Reliable Wi-Fi** – High-powered amplifiers ensure continuous Wi-Fi signal to all your devices while boosting widespread coverage throughout your very large home
- **4 Dual Band Antennas** – 4 dual band detachable antennas provide maximum Omni-directional wireless coverage
- **Beamforming Technology** – Archer VR2600's beamforming technology boosts signal strength in the directions of connected devices to extend wireless coverage

Features



Uses

- **Versatile Connectivity** – Fully compatible with VDSL2/ADSL2+, fiber/cable EWAN and 3G/4G dongle connections.
- **Intuitive Web UI** – Ensures a quick installation within 15 seconds, making your network setup out of hassle.
- **Tether App** – Easy network management at your fingertips

Scan QR code to download Tether app



Easy Sharing

- **2 USB 3.0 Ports** – Wirelessly access and share USB hard drive and printer via 2 USB 3.0 ports
- **10x Faster Transfer Speed** – USB 3.0 provides up to 10x faster USB hard drive access than earlier USB 2.0 connections
- **Built-in Print Server** – Supports wireless printing from multiple computers
- **Built-in Media Server** – Allows users to play music, Video and view photos

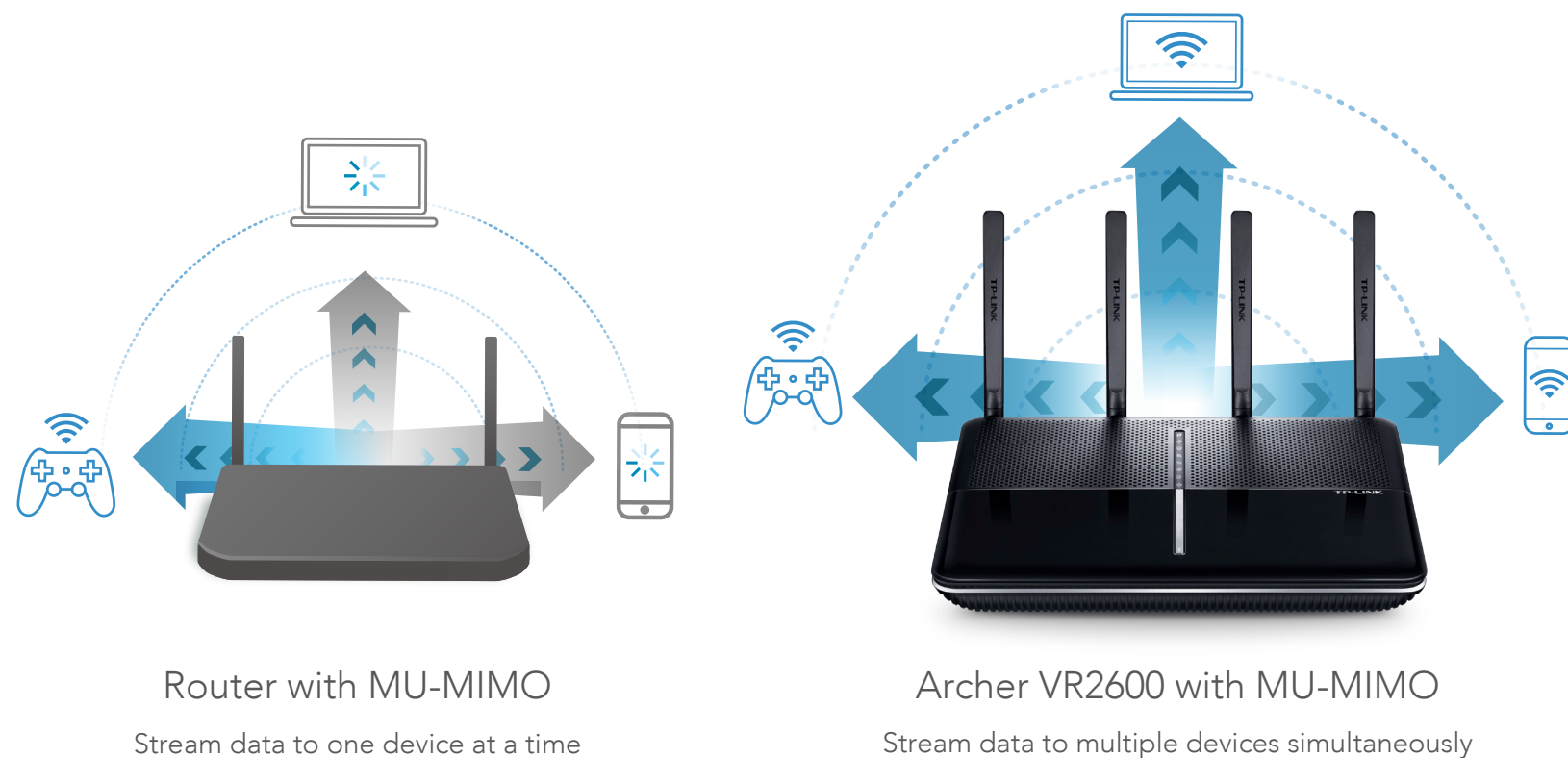


Security

- **Guest Network Access** – Guest Network Access provides secure Wi-Fi access for guests
- **Parental Control** – Establish restricted access policies for all connected devices
- **VPN Support** – Secure access to your home or office network from remote devices
- **SPI and NAT Firewall** – Protects end-user devices from potential attacks from the Internet
- **Encryptions for Secure Network** – WPA-PSK/WPA2-PSK encryptions provide active defense against security threats for user networks

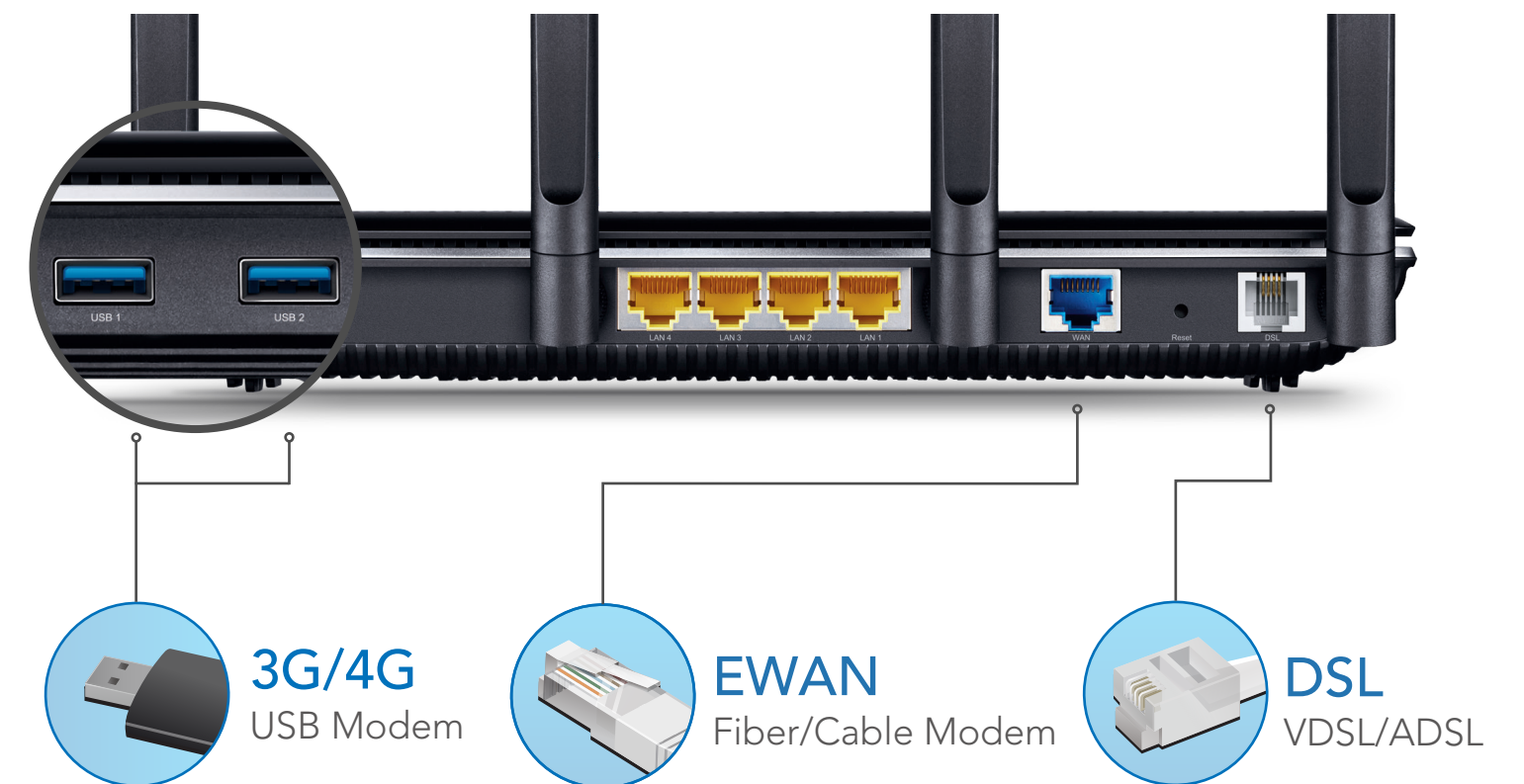
MU-MIMO for Powerful Multi-Tasking

As the first xDSL Modem Router with MU-MIMO technology, the Archer VR2600 is able to stream data to several devices simultaneously. It dramatically reduces wait-time for all clients by making better use of wireless capacity that are wasted by traditional routers. The result is a stunning 3x increase in Wi-Fi speeds for each device in your crowded network.



Versatile Connectivity

As a complete integrated modem router with superior flexibility, the Archer VR2600 provides versatile connectivity options including VDSL/ADSL line, fiber/cable modem and 3G/4G USB dongle. It ensures that the users can always get access to internet in various network environments.



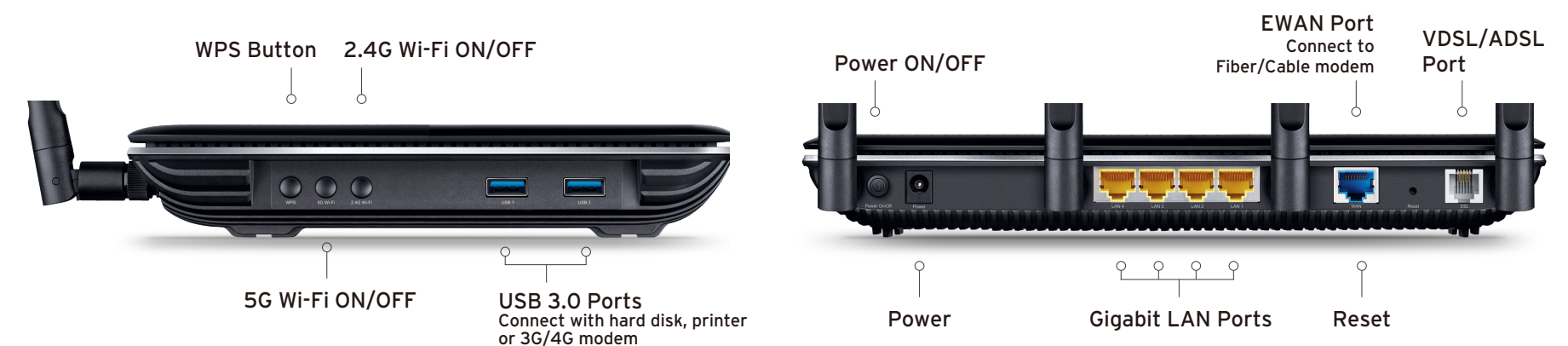
Specifications

Hardware

- **Ethernet Ports:** 4 10/100/1000Mbps RJ45 LAN Ports, 1 10/100/1000Mbps RJ45 WAN/LAN Port, 1 RJ11 Port
- **USB Ports:** 2 USB 3.0 Port
- **Button:** WPS Button, LED Button, Wireless On/Off Button (2.4GHz & 5 GHz), Power On/Off Button
- **External Power Supply:** 12V/3.3A
- **Dimensions (W x D x H):** 10.4x 7.8 x 1.5 in. (263.8 x 197.8 x 37.3 mm)
- **IEEE Standards:** IEEE 802.3, IEEE 802.3u, 802.3ab
- **VDSL2 Standards:** ITU G.993.2, Up to 17a profile (POTS)
ITU-T G.993.5 (G.vector)
- **ADSL Standards:** Full-rate ANSI T1.413 Issue 2,
ITU-T G.992.1 (G.DMT),
ITU-T G.992.2 (G.Lite),
ITU-T G.994.1 (G.hs),
ITU-T G.995.1
- **ADSL2 Standards:** ITU-T G.992.3 (G.DMT.bis),
ITU-T G.992.4 (G.lite.bis)
- **ADSL2+ Standards:** ITU-T G.992.5
- **Antenna Type:** 4 external detachable dual band antennas
- **Antenna Gain:** 4 x 3.1 dBi for 2.4GHz and 4 x 5.2 dBi for 5GHz

Wireless

- **Wireless Standards:** IEEE 802.11a/n/ac 5GHz, IEEE 802.11b/g/n 2.4GHz
- **Frequency:** 2.4GHz and 5GHz
- **Signal Rate:** 1733Mbps at 5GHz, 800Mbps at 2.4GHz
- **Transmit Power:** 2.4GHz<20dBm (EIRP), 5GHz<23dBm (EIRP)
- **Wireless Function:** Enable/Disable Wireless Radio, WDS Bridge, WMM, Wireless Statistics
- **Wireless Security:** 64/128-bit WEP, WPA/WPA2, WPA-PSK/WPA-PSK2 encryptions, Wireless MAC Filtering
- **Wireless Schedule:** Support 2.4GHz and 5GHz Wireless Schedule



Specifications

Software

- **Operation Modes:** xDSL Modem Router, 3G/4G Router, Wireless Router
- **DHCP:** Server, Client, DHCP Client List, Address Reservation, DHCP Relay
- **Quality of Service:** ATM QoS, Traffic Control(IP QoS)
- **Port Forwarding:** Virtual Server, Port Triggering, DMZ, ALG, UPnP
- **Dynamic DNS:** DynDns, NO-IP
- **VPN Passthrough:** PPTP, L2TP, IPSec Passthrough
- **ATM/PPP Protocols:** ATM Forum UNI3.1/4.0, PPP over ATM (RFC 2364), PPP over Ethernet (RFC2516), IPoA (RFC1577/2225), MER\IPoE (RFC 1483 Routed), Bridge (RFC1483 Bridge), PVC – Up to 8 PVCs
- **Security:** NAT Firewall, Access Control, MAC / IP / URL Filtering, Denial of Service (DoS), SYN Flooding, Ping of Death, IP and MAC Address Binding
- **Advanced Functions:** Parental Control, Network Address Translation(NAT), Port Mapping(Grouping), Static Routing, RIP v1/v2(optional), DNS Relay, DDNS, IGMP V1/V2/V3
- **USB Sharing:** Support Samba(Storage)/FTP Server/Media Server/Printer Server, 3G/4G Modem
- **Management:** Web Based Configuration(HTTP), Remote management, command Line Interface, SSL for TR-069, SNMP v1/2c, Web Based Firmware Upgrade, Diagnostic Tools
- **Guest Network:** 2.4GHz guest network x 1, 5GHz guest network x 1
- **IPSec VPN:** Supports up to 10 IPSec VPN tunnels
- **Protocols:** Supports IPv4 and IPv6

Others

Package Contents

- AC2600 Wireless Gigabit VDSL/ADSL Modem Router Archer VR2600
- External Splitter
- RJ11 DSL Cable
- RJ45 Ethernet Cable
- Power Adapter
- Quick Installation Guide

Certification

- CE, RCM, RoHS

System Requirements

- Microsoft Windows 98SE, NT, 2000, XP, Vista™ or Windows 7, 8, 10, MAC OS, NetWare, UNIX or Linux
- Internet Explorer 11, Firefox 12.0, Chrome 20.0, Safari 4.0, or other Java-enabled browser
- Cable or DSL Modem
- Subscription with an Internet Service Provider (for Internet access)

Environment

- Operating Temperature: 0°C ~40°C (32°F ~104°F)
- Storage Temperature: -40°C ~70°C (-40°F ~158°F)
- Operating Humidity: 10%~90% non-condensing
- Storage Humidity: 5%~90% non-condensing

Others

Ideal to use with



- AC1900 Wireless Dual Band PCI Express Adapter Archer T9E



- AC1200 Wireless Dual Band USB Adapter Archer T4U

Similar Products



- AC1900 Wireless Gigabit VDSL/ADSL Modem Router Archer VR900



- AC1600 Wireless Gigabit VDSL/ADSL Modem Router Archer VR600



For more information, please visit

<http://www.tp-link.com/en/products/details/?model=Archer+VR2600>

or scan the QR code left

Specifications are subject to change without notice. TP-LINK is a registered trademark of TP-LINK Technologies CO., Ltd. Other brands and product names are trademarks or registered trademarks of their respective holders. No part of the specifications may be reproduced in any form or by any means or used to make any derivative such as translation, transformation, or adaptation without permission from TP-LINK Technologies CO., Ltd. Maximum wireless speed of up to 2.53Gbps is the theoretical data rate derived from IEEE standard 802.11 specifications. Actual data throughput and wireless coverage will vary due to network conditions and environmental factors including volume of network traffic, building materials and construction, network overhead, actual data throughput rate, and wireless coverage. TP-LINK makes no express or implied representations or warranties about this product's compatibility with any future standards. 802.11ac 1300Mbps is approximately 3 times faster than 802.11n 450Mbps. 2.4GHz Performance Mode requires 256 QAM support on Wi-Fi client.

www.tp-link.com