

FPMA-CB100BLACK

NEOMOUNTS FPMA-CB100BLACK DUAL CROSSBAR MONITOR ARM ADAPTER 10-27"

SPECIFICATIONS

GENERAL

Min. screen size*	10
Max. screen size*	27
Min. weight	0
Max. weight	10
Screens	2
VESA maximum	100x100 mm
VESA minimum	75x75 mm

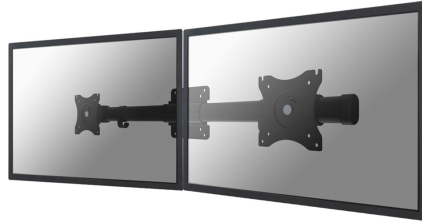
FUNCTIE

Type	Tilt
	Rotate
	Swivel
	Full motion
Width adjustment	80,5 cm
Tilt (degrees)	+45°, -45°
Swivel (degrees)	30°
Rotate (degrees)	360°
Adjustment type	None

INFORMATION

Color	Black
Main material	Steel
Warranty	5 year

*Please note: The inch sizes stated are just an indication, combined with the weight and VESA sizes. The maximum weight and VESA size are absolute restrictions for the products and should not be exceeded.



Neomounts



Neomounts

Neomounts FPMA-CB100BLACK Crossbar monitor arm adapter from 1 to 2 screens - 10-27" - 0-10 kg/screen - VESA 75x75-100x100 - black

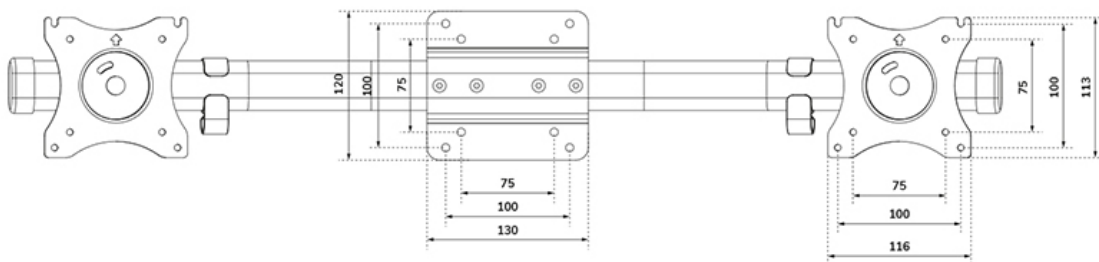
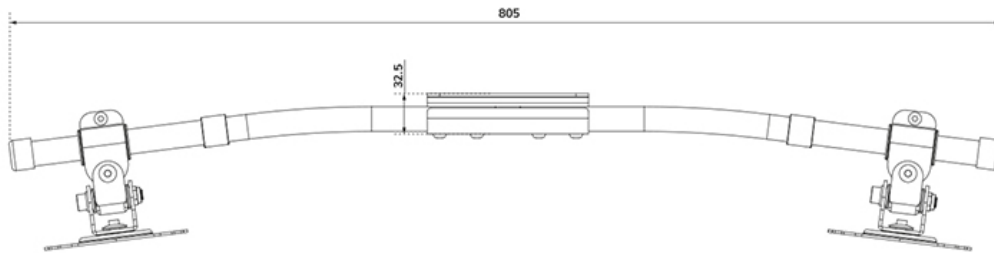
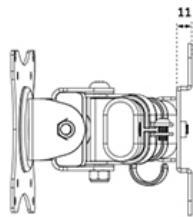
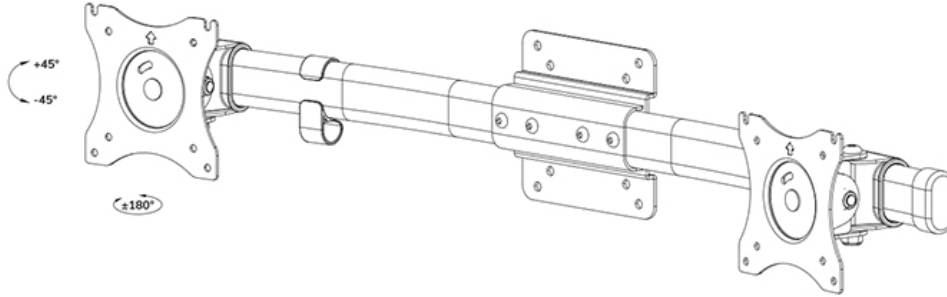
The Neomounts dual monitor adapter, model FPMA-CB100BLACK is a twin screen mounting rail allowing two monitors/flat screens to be mounted on one monitor mount. Slide screens from left to right to fit side-by-side display. Provides independent screen adjustments and freely move the monitors along the horizontal rail without using tools.

- Curved horizontal rail for improved viewing position
- Compatible with VESA 75x75 - 100x100 mounting interface
- Cable clips keep cables organized and protected

All installation material is included with the product.

FPMA-CB100BLACK

NEOMOUNTS FPMA-CB100BLACK DUAL
CROSSBAR MONITOR ARM ADAPTER 10-27"



Neomounts

Measuring unit: mm