



Philips
Headphones with mic

8.6mm drivers/closed-back
In-ear

SHE3705WT

Big beats, pumping bass

Compact design with vacuum metalized protection

Ultra small, big bass Philips MyJam Beamers in-ear headphones feature oval tube inserts for comfort and vacuum metalized coating for sleek looks with extra protection.

Revel in quality sound

- Big bass and clear sound through efficient drivers
- A perfect in-ear seal blocks out external noise

Listen for longer

- Oval sound tube insert provides an ergonomic comfort fit
- 3 interchangeable rubber ear caps offer an optimal fit
- Shiny, colorful coating looks sleek and also protects

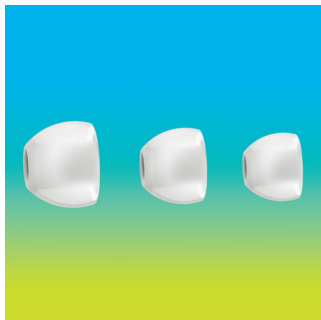
Always ready to go

- Reinforced cable relief enhances durability and connectivity
- Built-in mic switches from music to phone calls

PHILIPS

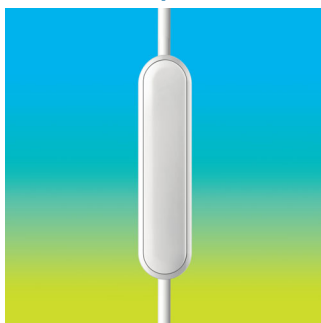
Highlights

3 sizes of ear caps



Ear caps come in a choice of 3 sizes - small, medium and large - for a personalized and perfect fit

Built-in microphone



Built-in microphones let you easily switch from music listening to taking phone calls, so you will always stay connected.

Colorful shiny coating



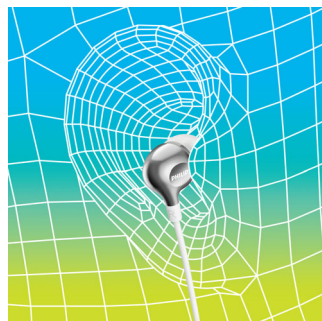
A high quality, glossy and colorful coating creates a sleek look while adding an extra protective surface.

Efficient drivers



Philips Vibes in-ear headphones house efficient drivers inside a compact design. They fit perfectly while pumping out clear sound and booming bass.

Oval sound tube



An oval sound tube insert provides ergonomic comfort to fit the true shape of the ear.

Perfect in-ear fit



Ultra small earphones fit perfectly inside the ear, creating a seal that blocks out external noise.

Reinforced cable relief

To extend the life of your headphones, a soft rubber relief between them and the cable protects the connection from damage through repeated bending.

Specifications

Accessories

- Eartips: 3 sizes: S, M, L

Sound

- Diaphragm: PET
- Frequency response: 11–22 000 Hz
- Voice coil: Copper
- Sensitivity: 105 dB
- Speaker diameter: 8.6 mm
- Maximum power input: 20 mW
- Impedance: 16 ohm
- Acoustic system: Closed

Connectivity

- Cable Connection: two parallel, symmetric
- Cable length: 1.2 m
- Connector: 3.5 mm
- Finishing of connector: chrome-plated

Inner Carton

- Gross weight: 0.128 kg
- GTIN: 2 08 89446 00615 9
- Inner carton (L x W x H): 18.1 x 8.1 x 6 cm
- Nett weight: 0.039 kg
- Number of consumer packagings: 3
- Tare weight: 0.089 kg

Outer Carton

- Gross weight: 1.16 kg
- GTIN: 1 08 89446 00615 2
- Outer carton (L x W x H): 37.4 x 17.4 x 13.9 cm
- Nett weight: 0.312 kg
- Number of consumer packagings: 24
- Tare weight: 0.848 kg

Packaging dimensions

- Packaging dimensions (W x H x D): 5 x 17.3 x 2.7 cm
- Gross weight: 0.027 kg
- Nett weight: 0.013 kg
- Number of products included: 1
- Packaging type: Blister
- Tare weight: 0.014 kg
- Type of shelf placement: Both
- UPC: 8 89446 00615 5



Issue date 2016-05-06

Version: 4.1.2

12 NC: 8670 001 35453
UPC: 8 89446 00615 5

© 2016 Koninklijke Philips N.V.
All Rights reserved.

Specifications are subject to change without notice.
Trademarks are the property of Koninklijke Philips N.V.
or their respective owners.

www.philips.com