



Philips
Headphones with mic

8.6mm drivers/closed-back
In-ear

SHE3705WT



Big beats, pumping bass

Compact design with vacuum metalized protection

Ultra small, big bass Philips MyJam Beamers in-ear headphones feature oval tube inserts for comfort and vacuum metalized coating for sleek looks with extra protection.

Revel in quality sound

- Big bass and clear sound through efficient drivers
- A perfect in-ear seal blocks out external noise

Listen for longer

- Oval sound tube insert provides an ergonomic comfort fit
- 3 interchangeable rubber ear caps offer an optimal fit
- Shiny, colorful coating looks sleek and also protects

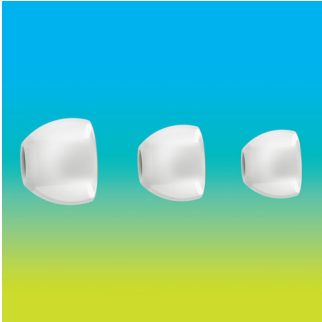
Always ready to go

- Reinforced cable relief enhances durability and connectivity
- Built-in mic switches from music to phone calls

PHILIPS

Highlights

3 sizes of ear caps



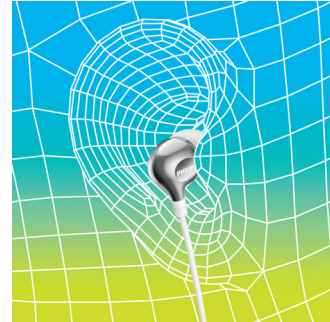
Ear caps come in a choice of 3 sizes - small, medium and large - for a personalized and perfect fit

Colorful shiny coating



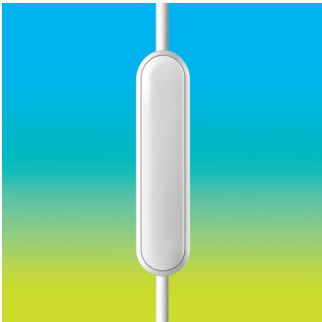
A high quality, glossy and colorful coating creates a sleek look while adding an extra protective surface.

Oval sound tube



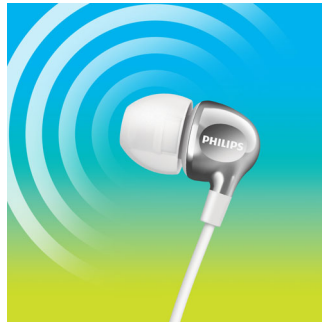
An oval sound tube insert provides ergonomic comfort to fit the true shape of the ear.

Built-in microphone



Built-in microphones let you easily switch from music listening to taking phone calls, so you will always stay connected.

Efficient drivers



Philips Vibes in-ear headphones house efficient drivers inside a compact design. They fit perfectly while pumping out clear sound and booming bass.

Perfect in-ear fit



Ultra small earphones fit perfectly inside the ear, creating a seal that blocks out external noise.

Reinforced cable relief

To extend the life of your headphones, a soft rubber relief between them and the cable protects the connection from damage through repeated bending.

Specifications

Accessories

- Eartips: 3 sizes: S, M, L

Design

- Color: White

Sound

- Diaphragm: PET
- Frequency response: 11–22 000 Hz
- Voice coil: Copper
- Sensitivity: 105 dB
- Speaker diameter: 8.6 mm
- Maximum power input: 20 mW
- Impedance: 16 ohm
- Acoustic system: Closed

Connectivity

- Cable Connection: two parallel, symmetric
- Cable length: 1.2 m
- Connector: 3.5 mm
- Finishing of connector: chrome-plated

Inner Carton

- Gross weight: 0.128 kg

- GTIN: 2 08 89446 00615 9
- Inner carton (L x W x H): 18.1 x 8.1 x 6 cm
- Nett weight: 0.039 kg
- Number of consumer packagings: 3
- Tare weight: 0.089 kg

Outer Carton

- Gross weight: 1.16 kg
- GTIN: 1 08 89446 00615 2
- Outer carton (L x W x H): 37.4 x 17.4 x 13.9 cm
- Nett weight: 0.312 kg
- Number of consumer packagings: 24
- Tare weight: 0.848 kg

Packaging dimensions

- Packaging dimensions (W x H x D):
5 x 17.3 x 2.7 cm
- Gross weight: 0.027 kg
- Nett weight: 0.013 kg
- Number of products included: 1
- Packaging type: Blister
- Tare weight: 0.014 kg
- Type of shelf placement: Both
- UPC: 8 89446 00615 5



Issue date 2017-08-27

Version: 4.1.4

12 NC: 8670 001 35453
UPC: 8 89446 00615 5

© 2017 Koninklijke Philips N.V.
All Rights reserved.

Specifications are subject to change without notice.
Trademarks are the property of Koninklijke Philips N.V.
or their respective owners.

www.philips.com