



Philips  
Headphones

8.6mm drivers/closed-back  
In-ear

SHE3700WT



## Big beats, pumping bass

Compact design with vacuum metalized protection

Ultra small, big bass Philips MyJam Beamers in-ear headphones feature oval tube inserts for comfort and vacuum metalized coating for sleek looks with extra protection.

### Revel in quality sound

- Big bass and clear sound through efficient drivers
- A perfect in-ear seal blocks out external noise

### Listen for longer

- Oval sound tube insert provides an ergonomic comfort fit
- 3 interchangeable rubber ear caps offer an optimal fit
- Shiny, colorful coating looks sleek and also protects

### Always ready to go

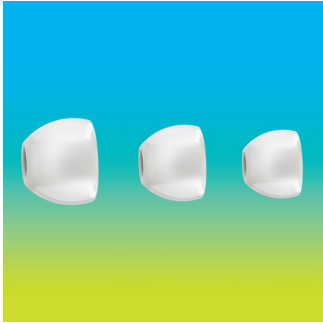
- Reinforced cable relief enhances durability and connectivity

# PHILIPS

Headphones  
8.6mm drivers/closed-back In-ear

# Highlights

## 3 sizes of ear caps



Ear caps come in a choice of 3 sizes - small, medium and large - for a personalized and perfect fit

## Colorful shiny coating



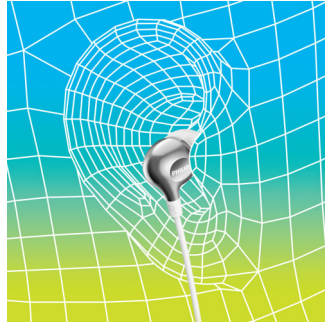
A high quality, glossy and colorful coating creates a sleek look while adding an extra protective surface.

## Efficient drivers



Philips Vibes in-ear headphones house efficient drivers inside a compact design. They fit perfectly while pumping out clear sound and booming bass.

## Oval sound tube



An oval sound tube insert provides ergonomic comfort to fit the true shape of the ear.

## Perfect in-ear fit



Ultra small earphones fit perfectly inside the ear, creating a seal that blocks out external noise.

## Reinforced cable relief

To extend the life of your headphones, a soft rubber relief between them and the cable protects the connection from damage through repeated bending.

SHE3700WT/27

# Specifications

## Accessories

- Eartips: 3 sizes S, M, L

## Design

- Color: White

## Sound

- Acoustic system: Closed
- Diaphragm: PET
- Voice coil: copper
- Frequency response: 11- 22 000 Hz
- Impedance: 16 ohm
- Maximum power input: 20 mW
- Sensitivity: 105 dB
- Speaker diameter: 8.6 mm
- Type: Dynamic

## Connectivity

- Cable Connection: two-parallel, symmetric
- Cable length: 1.2 m
- Connector: 3.5 mm
- Finishing of connector: chrome-plated
- Type of cable: copper

## Inner Carton

- Gross weight: 0.125 kg
- GTIN: 2 08 89446 00609 8
- Inner carton (L x W x H): 18.1 x 8.1 x 6 cm
- Nett weight: 0.036 kg
- Number of consumer packagings: 3
- Tare weight: 0.089 kg

## Outer Carton

- Gross weight: 1.136 kg
- GTIN: 1 08 89446 00609 1
- Outer carton (L x W x H): 37.4 x 17.4 x 13.9 cm
- Nett weight: 0.288 kg
- Number of consumer packagings: 24
- Tare weight: 0.848 kg

## Packaging dimensions

- Packaging dimensions (W x H x D): 5 x 17.3 x 2.7 cm
- Gross weight: 0.026 kg
- Nett weight: 0.012 kg
- Number of products included: 1
- Packaging type: Blister
- Tare weight: 0.014 kg
- Type of shelf placement: Both
- UPC: 8 89446 00609 4



Issue date 2017-08-27

Version: 5.1.3

12 NC: 8670 001 35446  
UPC: 8 89446 00609 4

© 2017 Koninklijke Philips N.V.  
All Rights reserved.

Specifications are subject to change without notice.  
Trademarks are the property of Koninklijke Philips N.V.  
or their respective owners.

[www.philips.com](http://www.philips.com)