

Quick Start Guide

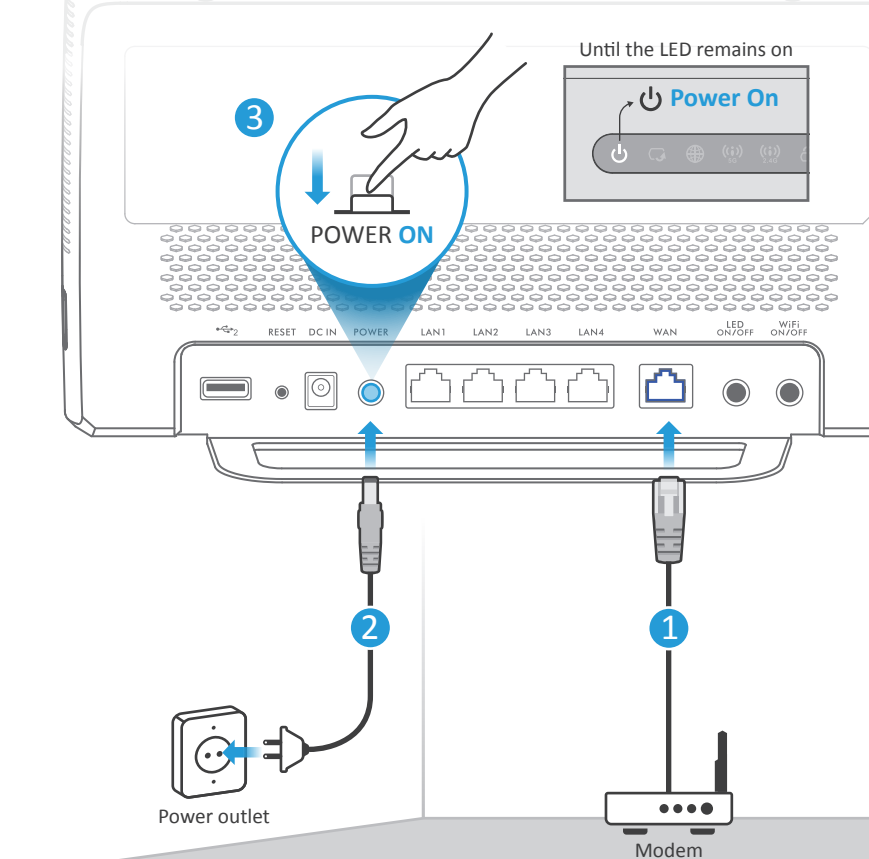
NBG6815

AC2200 MU-MIMO Dual-Band Wireless Gigabit Router



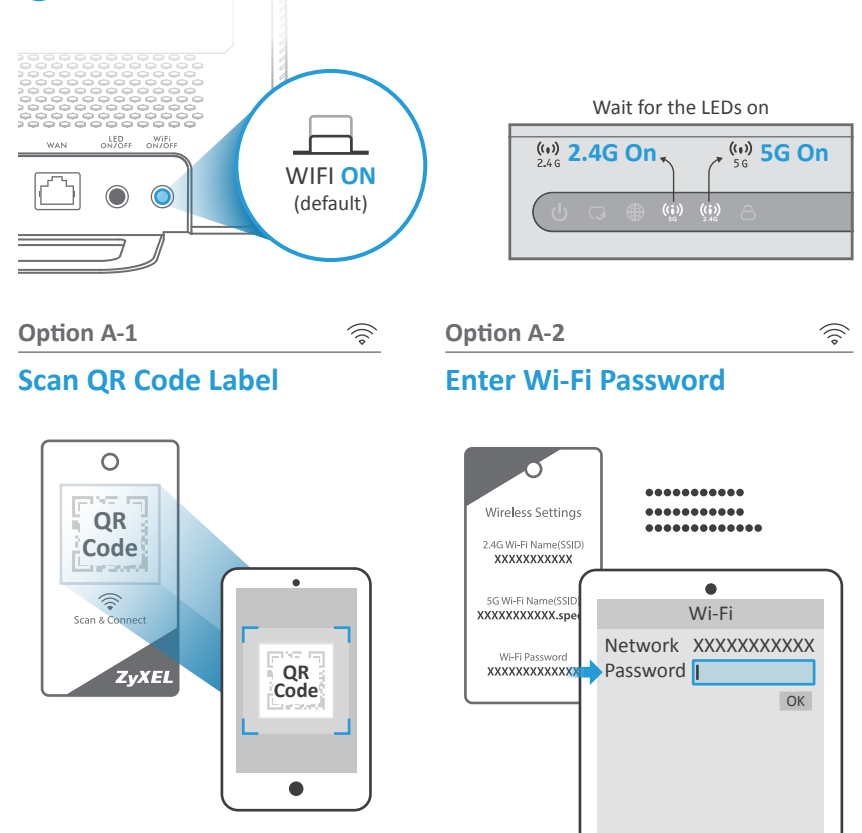
ZyXEL

Hardware Installation



- EN ① Connect an Internet enabled broadband modem/router to the blue WAN port on the ZyXEL router with an Ethernet cable.
- ② Connect the power adapter to the ZyXEL router's power port and connect the other end to an available power outlet.
- ③ Press the POWER button and ensure the power LED is on.

A Wireless Connection

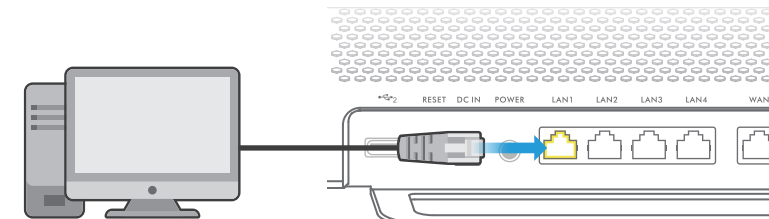


- EN (A-1) On an Android device, scan the QR code to connect. For iOS, scan the QR code and choose "Copy Password" then paste it into your iOS' device's Wi-Fi settings.
- (A-2) Manually enter the Wi-Fi name (SSID) and Wi-Fi password onto your wireless device(s). Press the Wi-Fi button if Wi-Fi LEDs are not on.

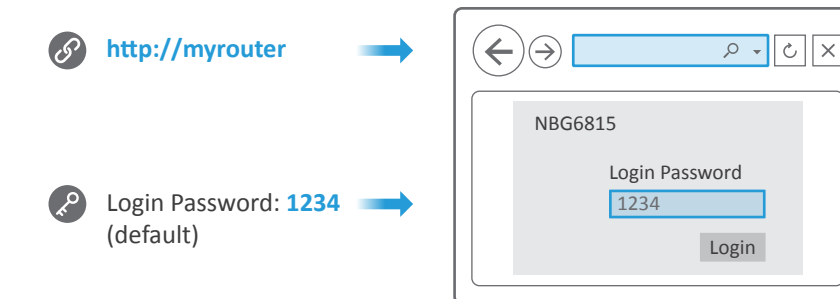
B Wired Ethernet Connection

Option B

Set Up By Wired Cable



Web Browser Configuration



- EN (B) Connect a computer to one yellow LAN port of the ZyXEL router. Once connected, open a web browser and type "http://myrouter". Enter "1234" for the password and click on "Login". We recommend you use Internet Explorer 9 and higher, Chrome, or Firefox web browser.

More Gadgets...



myZyXELcloud
myZyXELcloud is a website to allow you to easily get to your devices wherever you go



ONE Connect
An easy tool to manage, monitor network map and sync Wi-Fi settings for your ZyXEL network devices all from your mobile

See the User's Guide at www.zyxel.com for more information.

EU Importer
ZyXEL Communication A/S
Generatorvej 8D, 2860 Søborg, Denmark.
<http://www.zyxel.dk>

US Importer
ZyXEL Communications, Inc
1130 North Miller Street Anaheim, CA 92806-2001
<http://www.us.zyxel.com>

Copyright © 2015 ZyXEL Communications Corp. All Rights Reserved

Warranty form

ZyXEL Warranty information

Thank you for purchasing a ZyXEL product! We take great pride in our quality, value and performance and believe that this product should offer you trouble-free operation throughout its lifetime. If you do experience any problems with your product, please contact ZyXEL Communications Corporation offices worldwide. For further information on our warranty regulations and liability in your country please visit the ZyXEL web site: <http://www.zyxel.com/warranty>

In certain countries, the seller has to fill out, sign and stamp the following warranty information in order for the ZyXEL warranty to be valid.

Product model number

Product serial number

Date of purchase

Seller's stamp and signature