

Ear thermometer

- Accurate temperature reading
- Fast measurement in 2 seconds
- Syncs with Philips health app

DL8740/15



Connected temperature tracking

Syncs with free Philips HealthSuite health app

The connected ear thermometer allows you to quickly and accurately take readings and store them directly on your smart device using the free Philips HealthSuite health app, so you can conveniently monitor your temperature over time.

Benefits

Delivers fast and accurate results

- Provides accurate temperature measurements
- Accurate temperature reading in 2 seconds

Personalised tracking in the Philips health app

- Automatically syncs to the Philips health app via Bluetooth®
- Monitor your temperature over time

Comfortable and easy to use

- Suitable for people of all ages
- Gives results in Celsius and Fahrenheit
- Red LED display ring for rapid high-temperature indication

PHILIPS

Features

Accurate



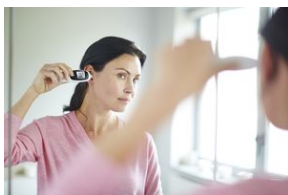
Fast and accurate in-ear measurements. The Philips ear thermometer uses in-ear measurement to offer precise readings you can be confident are accurate. The thermometer offers accurate measurements of $\pm 0.2^{\circ}\text{C}$ ($\pm 0.4^{\circ}\text{F}$) within the range of 32.4°C - 42.9°C (90.3°F - 109.3°F).

Phone compatibility



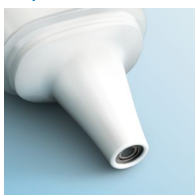
Automatically transfer your measurements to the Philips HealthSuite health app on your smartphone so you can monitor changes over time. Compatible with iOS 9.3 or higher/Android 4.4 KitKat or higher. For an overview of (in)compatible devices, please go to www.philips.com/personalhealthcompatibility

Fast



Specially designed for speed and ease. Just one press of the button and you will have a reading in 2 seconds.

Easy and comfortable to use



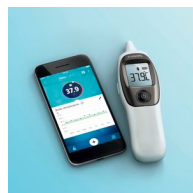
The thermometer has a simple one-touch button and a probe tip that is comfortable to insert and suitable for use by all ages (newborn and up). No replacement caps required. Just clean the thermometer tip before use.

Celsius and Fahrenheit



No matter whether you measure in Celsius or Fahrenheit, the Philips HealthSuite Ear thermometer will give you the results you need in the scale you understand

Track your results over time



Determine your normal body core temperature so you can track and spot changes quickly and easily in the Philips HealthSuite health app.

Red LED display



The Philips ear thermometer has a clear LCD display so you can instantly see if the temperature reading is at a normal* or raised level. The light ring turns red for temperatures of 38.0°C (100.4°F) and higher. *Normal temperature ranges differ by age group. 38.0°C (100.4°F) is still within the normal temperature range for babies.

Specifications

Please note that this is a pre-sales leaflet. The contents of this leaflet reflect the best of our knowledge per date and country mentioned above. The contents of this leaflet are subject to change without notice. Philips does not accept any liability as to the contents of this leaflet.

Syncing

Phone compatibility	iOS 8 or higher / Android 4.4 or higher
Data transfer technology	Bluetooth®

Design

Colour	White
Dimensions	136(L) x 34.5(W) x 57(D) mm
Net. Weight	About 54.6 g

Ease of use

Fast	2-second measurement
Switch to Celsius and Fahrenheit	Yes
Clear LCD display	Yes
Probe tip for all ages	Yes
Can be used as stand-alone	Yes

Accessories

2 x AAA batteries Yes

Service

2 year guarantee Yes

Technical

Accuracy $\pm 0.2\text{ }^{\circ}\text{C}$ ($\pm 0.4\text{ }^{\circ}\text{F}$)
Measurement range $32.4\text{ }^{\circ}\text{C}$ – $42.9\text{ }^{\circ}\text{C}$ ($90.3\text{ }^{\circ}\text{F}$ – $109.3\text{ }^{\circ}\text{F}$)

Power

Power source 6 V (2 x AAA alkaline batteries)



data subject to change
2017, July 20

Version: 3.2.1
EAN:

© 2017 Koninklijke Philips N.V.
All rights reserved.

Specifications are subject to change without notice. Trademarks are the property of Koninklijke Philips N.V. or their respective owners.

www.philips.com