

# HP Z440 Workstation



## Expand your power

Take your business to the next level of performance, expandability, and no compromise reliability in one complete package. Featuring a perfect mix of HP Z DNA in a performance workstation package with up to 8 discrete processor cores, up to 128 GB of RAM, and multiple storage and PCIe configuration options.



## HP recommends Windows.

- Windows 8.1<sup>1</sup>
- Intel® Xeon™ processors<sup>2</sup>

### Get the job done fast

- Cross items off your to-do list fast. Achieve massive computational performance with a single processor personal workstation delivering support for up to 8 cores of processing power. Add in powerful graphics and performance features like optional Thunderbolt™ 2<sup>3</sup>, HP Z Turbo Drive<sup>4</sup>, and HP Remote Graphics Software,<sup>4</sup> and you get a world-class workstation experience that never slows you down.

### Customize it to grow with you

- When your job requires more, the HP Z440 Workstation, with its sleek 4U form factor, tool-less design, and built-in handles make it simple to expand. Easily configure memory, storage, graphics, and more to suit your needs.

### Position for the future

- Protect your investment and make downtime a thing of the past. Get no-compromise reliability and a standard 3/3/3 limited warranty from the HP Z440 Workstation.

### Featuring:

- Achieve the performance you need with next generation Intel® Xeon® processors for up to 8 processor cores in one system.<sup>2</sup>
- Get serious about graphics and reach peak productivity with access to a breadth of AMD professional graphics from entry to high-end 3D.<sup>4</sup>
- Take productivity up a notch with the ability to do more thanks to NVIDIA® professional graphics cards in 2D or 3D.<sup>4</sup>
- Maximize your time and increase your capabilities with USB and SATA ports, plus lightning-fast data transfers using optional Thunderbolt™ 2 technology.<sup>3</sup>
- A brand new tool-free chassis boasts low acoustics, single integrated Gb Ethernet and more.
- Reduce boot up, calculation, and graphics response and revolutionize how your HP Z440 handles large files with the HP Z Turbo Drive, a remarkably fast and innovative storage solution.
- You'll never run out of juice with the 700W Power Supply with two power cables for high-power professional graphics.
- Take multitasking to a new level with support for up to eight displays.<sup>5</sup>
- Optimize this HP Z440 for peak performance. HP Performance Advisor<sup>6</sup> configures your system with updated settings and drivers to help maximize performance.



# HP Z440 Workstation Specifications Table

HP recommends Windows.



|                                     |  |
|-------------------------------------|--|
| <b>Form Factor</b>                  | Minitower  |
| <b>Operating System</b>             | Windows 8.1 Pro 64 <sup>1</sup><br>Windows 8.1 64 <sup>2</sup><br>Windows 7 Professional 64 (available through downgrade rights from Windows 8.1 Pro 64) <sup>1</sup><br>Windows 7 Professional 64 <sup>1</sup><br>Ubuntu Linux<br>HP Installer Kit for Linux  |
| <b>Processor Family</b>             | Intel® Xeon® E5 1600 v3 processor; Intel® Xeon® E5 2600 v3 processor   |
| <b>Processors<sup>3,4</sup></b>     | Intel® Xeon® E5-1680 v3 (3.2 GHz, 20 MB cache, 8 cores, Intel® vPro™); Intel® Xeon® E5-1660 v3 (3.0 GHz, 20 MB cache, 8 cores, Intel® vPro™); Intel® Xeon® E5-2630 v3 (2.4 GHz, 20 MB cache, 8 cores, Intel® vPro™); Intel® Xeon® E5-1650 v3 (3.5 GHz, 15 MB cache, 6 cores, Intel® vPro™); Intel® Xeon® E5-1630 v3 (3.7 GHz, 10 MB cache, 4 cores, Intel® vPro™); Intel® Xeon® E5-1620 v3 (3.5 GHz, 10 MB cache, 4 cores, Intel® vPro™); Intel® Xeon® E5-1607 v3 (3.1 GHz, 10 MB cache, 4 cores, Intel® vPro™); Intel® Xeon® E5-1603 v3 (2.8 GHz, 10 MB cache, 4 cores, Intel® vPro™) |
| <b>Chipset</b>                      | Intel® C612  |
| <b>Maximum Memory</b>               | Up to 128 GB DDR4-2133 ECC registered SDRAM DDR4-2133 ECC Registered SDRAM<br>Standard memory note: Actual memory speed dependent on processor. Only registered memory is supported.   |
| <b>Memory Slots</b>                 | 8 DIMM   |
| <b>Drive Controllers</b>            | Integrated SATA 6.0 Gb/s; LSI MegaRAID® 9270-8i SAS 6.0 Gb/s ROC RAID Card and iBBU09 Battery Backup Unit (optional); LSI 9217-4i4e 8-port SAS 6.0 Gb/s RAID (optional); Factory integrated RAID available for SATA/SAS drives (RAID 0, 0 Data, 1, and 10)   |
| <b>Internal Storage</b>             | 300 GB up to 600 GB SAS (15000 rpm) <sup>5</sup><br>300 GB up to 1.2 TB SAS (10000 rpm) <sup>5</sup><br>500 GB up to 4 TB SATA (7200 rpm) <sup>5</sup><br>up to 500 GB SATA SED (7200 rpm) <sup>5</sup><br>128 GB up to 1 TB SATA SSD <sup>5</sup><br>up to 256 GB SATA SE SSD <sup>5</sup><br>256 GB up to 512 GB HP Z Turbo Drive (PCIe SSD) <sup>5</sup>  |
| <b>Optical Storage</b>              | Slim SATA DVD-ROM; Slim SATA SuperMulti DVD writer; Slim SATA BDXL Blu-ray writer <sup>6,7,12</sup>  |
| <b>Additional Storage</b>           | 15-in-1 media card reader (optional)   |
| <b>Drive Bays (Internal)</b>        | Two 3.5"   |
| <b>Drive Bays (External)</b>        | Two 5.25"; One slim ODD  |
| <b>Available Graphics</b>           | Professional 2D: NVIDIA® NVS™ 310 (512 MB); NVIDIA® NVS™ 315 (1 GB); NVIDIA® NVS™ 510 (2 GB)<br>Entry 3D: NVIDIA® Quadro® K420 (1 GB); NVIDIA® Quadro® K620 (2 GB)<br>Mid-range 3D: NVIDIA® Quadro® K2200 (4 GB); AMD FirePro™ W2100 (2 GB); AMD FirePro™ W5100 (4 GB)<br>High-end 3D: NVIDIA® Quadro® K4200 (4 GB); NVIDIA® Quadro® K5200 (8 GB); NVIDIA® Quadro® K6000 (12 GB); AMD FirePro™ W7100 (8 GB)  |
| <b>Expansion Slots</b>              | 2 PCIe Gen3 x16; 1 PCIe Gen3 x8 (open-ended); 1 PCIe Gen2 x4 (open-ended); 1 PCIe Gen2 x1 (open-ended); 1 PCI<br>Open-ended connector allows a greater bandwidth card to be installed physically into a lower bandwidth connector/slot.  |
| <b>Ports and Connectors</b>         | Front: 4 USB 3.0; 1 microphone; 1 headset<br>Back: 4 USB 3.0; 2 USB 2.0; 2 PS/2; 1 RJ-45; 1 audio line in; 1 audio line out<br>Internal: 1 USB 2.0; 1 USB 3.0  |
| <b>Communications</b>               | Integrated Intel I218LM PCIe GbE; Intel I210AT PCIe GbE (optional); HP X540-T2 10 GbE Dual Port Adapter (optional); HP X520 10 GbE Dual Port Adapter (optional); HP 10 GbE SFP+SR Transceiver (optional); HP 361T PCIe dual-port gigabit (optional); Intel 7260 802.11a/b/g/n PCIe WLAN (optional) <sup>8</sup>  |
| <b>Audio</b>                        | Integrated Realtek HD ALC221   |
| <b>Power</b>                        | 700 W 90% efficient, wide-ranging, active PFC  |
| <b>Input Device</b>                 | HP PS/2 Keyboard; HP USB Keyboard; HP USB SmartCard Keyboard; HP Wireless Keyboard and Mouse <sup>9</sup><br>HP PS/2 Mouse; HP USB Optical Mouse; HP USB 1000 dpi Laser Mouse; HP USB Optical 3-Button Mouse; HP SpaceMouse Pro USB 3D Controller; HP SpacePilot Pro 3D USB Intelligent Controller <sup>9</sup>  |
| <b>Security</b>                     | HP Solenoid Hood Lock & Hood Sensor; HP Business PC Security Lock Kit; TPM 1.2 certified <sup>9</sup>  |
| <b>Software</b>                     | HP Performance Advisor; HP Remote Graphics Software (RGS) 6.0; CyberLink PowerDVD/Power2Go; Cyberlink PowerDVD; Foxit PhantomPDF Express; Buy Office   |
| <b>Dimensions</b>                   | 16.9 x 44.5 x 43.2 cm  |
| <b>Weight</b>                       | 11 kg<br>Exact weight depends upon configuration.  |
| <b>Energy Efficiency Compliance</b> | ENERGY STAR® certified and EPEAT® registered configurations available <sup>10</sup>  |
| <b>Environmental Certification</b>  | Low halogen <sup>11</sup>  |
| <b>Compatible Displays</b>          | HP Z Display Z30i 30-inch IPS LED Backlit Monitor; HP Z Display Z27i 27-inch IPS LED Backlit Monitor; HP Z Display Z24i 24-inch IPS LED Backlit Monitor; HP Z Display Z23i 23-inch IPS LED Backlit Monitor; HP Z Display Z22i 21.5-inch IPS LED Backlit Monitor; HP DreamColor Z27x Professional Display; HP DreamColor Z24x Professional Display  |
| <b>Warranty</b>                     | 3-year (3-3-3) limited warranty and service offering includes 3 years of parts, labor and on-site repair. Terms and conditions vary by country. Certain restrictions and exclusions apply.   |

## HP Z440 Workstation

**HP recommends Windows.**

### Accessories and services (not included)

---

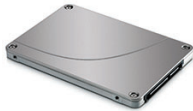
HP SpaceMouse Pro USB 3D  
Input Device



SpaceMouse Pro is the latest addition to 3Dconnexion's line of professional 3D mice. With an advanced ergonomic design and innovative On-Screen Display, it delivers superior comfort and a simpler, more productive workflow.

**Product number: B4A20AA**

HP 512GB SATA Solid State  
Drive



Get a storage solution that significantly improves boot-up, shut down, and application loading times as well as overall responsiveness. Since SSDs have no moving parts, your storage performance is no longer bound by mechanical barriers.

**Product number: D8F30AA**

5-year Next Business Day  
Onsite

Receive 5 years of next business day onsite repair from an HP-qualified technician for your computing device, if the issue cannot be solved remotely.

**Product number: U7944E**



---

**Learn more at**  
[www.hp.eu/hpoptions](http://www.hp.eu/hpoptions)

## HP Z440 Workstation

**HP recommends Windows.**

### Messaging Footnotes:

<sup>1</sup> Not all features are available in all editions or versions of Windows. Systems may require upgraded and/or separately purchased hardware, drivers and/or software to take full advantage of Windows functionality. See <http://www.microsoft.com>.

<sup>2</sup> Multi-Core is designed to improve performance of certain software products. Not all customers or software applications will necessarily benefit from use of this technology. 64-bit computing system required. Performance will vary depending on your hardware and software configurations. Intel's numbering is not a measurement of higher performance.

<sup>3</sup> Thunderbolt is an optional or after-market feature. Thunderbolt cable and Thunderbolt device (sold separately) must be compatible with Windows. To determine whether your device is Thunderbolt Certified for Windows, see <https://thunderbolttechnology.net/products>.

<sup>4</sup> Sold separately or as an optional feature.

<sup>5</sup> Support for up to eight displays requires purchase of two graphics cards that support up to 4 displays simultaneously. Displays sold separately.

<sup>6</sup> HP Performance Advisor requires Windows and Internet access.

### Technical Specifications Footnotes:

<sup>1</sup> Not all features are available in all editions or versions of Windows. Systems may require upgraded and/or separately purchased hardware, drivers and/or software to take full advantage of Windows functionality. See <http://www.microsoft.com>.

<sup>2</sup> This system is preinstalled with Windows 7 Professional software and also comes with a license and media for Windows 8.1 Pro software. You may only use one version of the Windows software at a time. Switching between versions will require you to uninstall one version and install the other version. You must back up all data (files, photos, etc.) before uninstalling and installing operating systems to avoid loss of your data.

<sup>3</sup> Multi-Core is designed to improve performance of certain software products. Not all customers or software applications will necessarily benefit from use of this technology. 64-bit computing system required. Performance will vary depending on your hardware and software configurations. Intel's numbering is not a measurement of higher performance.

<sup>4</sup> Some vPro functionality of this technology, such as Intel® Active management technology and Intel Virtualization technology, requires additional 3rd party software in order to run. Availability of future "virtual appliances" applications for Intel vPro technology is dependent on 3rd party software providers. Microsoft Windows required.

<sup>5</sup> For hard drives, GB = 1 billion bytes. TB = 1 trillion bytes. Actual formatted capacity is less. Up to 20 GB of system disk is reserved for Windows 7 and higher system recovery software.

<sup>6</sup> Duplication of copyrighted material is strictly prohibited. Actual speeds may vary. Double Layer media compatibility will widely vary with some home DVD players and DVD-ROM drives. Note that DVD-RAM cannot read or write to 2.6GB Single Sided/5.2 Double Sided-Version 1.0 Media.

<sup>7</sup> With Blu-Ray, certain disc, digital connection, compatibility and/or performance issues may arise, and do not constitute defects in the product. Flawless playback on all systems is not guaranteed. In order for some Blu-ray titles to play, they may require a DVI or HDMI digital connection and your display may require HDCP support. HD-DVD movies cannot be played on this Desktop PC.

<sup>8</sup> Wireless cards are optional or add-on features and requires separately purchased wireless access point and internet service. Availability of public wireless access points limited.

<sup>9</sup> Optional or add-on feature

<sup>10</sup> EPEAT® registered where applicable. EPEAT registration varies by country. See [www.epeat.net](http://www.epeat.net) for registration status by country.

<sup>11</sup> External power supplies, power cords, cables and peripherals are not low halogen. Service parts obtained after purchase may not be low halogen.

<sup>12</sup> With Blu-Ray drive XL, certain disc, digital connection, compatibility and performance issues may arise, and do not constitute defects in the product. Flawless playback on all systems is not guaranteed. In order for some Blu-ray titles to play, they may require an HDCP path and HDCP display. HD-DVD movies cannot be played on this BDXL Drive.

### Learn more at

[www.hp.eu/workstations](http://www.hp.eu/workstations)

### Engage HP Financial Services

Explore monthly payment options and technology refresh plans that can provide more flexibility to help you meet your IT goals. More information on [www.hp.com/go/hpfs](http://www.hp.com/go/hpfs).

### Sign up for updates

[hp.com/go/getupdated](http://hp.com/go/getupdated)

The product could differ from the images shown. © 2015 Hewlett-Packard Development Company, L.P. The information contained herein is subject to change without notice. Specific features may vary from model to model. The only warranties for HP products and services are set forth in the express warranty statements accompanying such products and services. Nothing herein should be construed as constituting an additional warranty. HP shall not be liable for technical or editorial errors or omissions contained herein. Not all features are available in all editions of Windows 8.1. Systems may require upgraded and/or separately purchased hardware to take full advantage of Windows 8.1 functionality. See <http://www.microsoft.com/windows> for details.

Microsoft, Windows, and the Windows Logo are U.S. registered trademarks of Microsoft Corporation. Intel and Xeon are trademarks or registered trademarks of Intel Corporation or its subsidiaries in the U.S. and other countries. All other trademarks are the property of their respective owners.

