

Dell Vostro 20–3052 Owner's Manual

Regulatory Model: W15B
Regulatory Type: W15B002



Notes, cautions, and warnings

 **NOTE:** A NOTE indicates important information that helps you make better use of your computer.

 **CAUTION:** A CAUTION indicates either potential damage to hardware or loss of data and tells you how to avoid the problem.

 **WARNING:** A WARNING indicates a potential for property damage, personal injury, or death.

Copyright © 2015 Dell Inc. All rights reserved. This product is protected by U.S. and international copyright and intellectual property laws. Dell™ and the Dell logo are trademarks of Dell Inc. in the United States and/or other jurisdictions. All other marks and names mentioned herein may be trademarks of their respective companies.

2015 - 07


Rev. A00


Working on Your Computer


Before Working Inside Your Computer


Use the following safety guidelines to help protect your computer from potential damage and to help to ensure your personal safety. Unless otherwise noted, each procedure included in this document assumes that the following conditions exist:


- You have read the safety information that shipped with your computer.
- A component can be replaced or--if purchased separately--installed by performing the removal procedure in reverse order.


 **WARNING:** Disconnect all power sources before opening the computer cover or panels. After you finish working inside the computer, replace all covers, panels, and screws before connecting to the power source.


 **WARNING:** Before working inside your computer, read the safety information that shipped with your computer. For additional safety best practices information, see the Regulatory Compliance Homepage at www.dell.com/regulatory_compliance

 **CAUTION:** Many repairs may only be done by a certified service technician. You should only perform troubleshooting and simple repairs as authorized in your product documentation, or as directed by the online or telephone service and support team. Damage due to servicing that is not authorized by Dell is not covered by your warranty. Read and follow the safety instructions that came with the product.

 **CAUTION:** To avoid electrostatic discharge, ground yourself by using a wrist grounding strap or by periodically touching an unpainted metal surface, such as a connector on the back of the computer.


 **CAUTION:** Handle components and cards with care. Do not touch the components or contacts on a card. Hold a card by its edges or by its metal mounting bracket. Hold a component such as a processor by its edges, not by its pins.

 **CAUTION:** When you disconnect a cable, pull on its connector or on its pull-tab, not on the cable itself. Some cables have connectors with locking tabs; if you are disconnecting this type of cable, press in on the locking tabs before you disconnect the cable. As you pull connectors apart, keep them evenly aligned to avoid bending any connector pins. Also, before you connect a cable, ensure that both connectors are correctly oriented and aligned.


 **NOTE:** The color of your computer and certain components may appear differently than shown in this document.

To avoid damaging your computer, perform the following steps before you begin working inside the computer.

1. Ensure that your work surface is flat and clean to prevent the computer cover from being scratched.
2. Turn off your computer (see Turning Off Your Computer).

 **CAUTION: To disconnect a network cable, first unplug the cable from your computer and then unplug the cable from the network device.**

3. Disconnect all network cables from the computer.
4. Disconnect your computer and all attached devices from their electrical outlets.
5. Press and hold the power button while the computer is unplugged to ground the system board.
6. Remove the cover.


 **CAUTION: Before touching anything inside your computer, ground yourself by touching an unpainted metal surface, such as the metal at the back of the computer. While you work, periodically touch an unpainted metal surface to dissipate static electricity, which could harm internal components.**




Recommended Tools

The procedures in this document may require the following tools:


- Small flat-blade screwdriver
- Phillips screwdriver
- Small plastic scribe

Turning Off Your Computer

 **CAUTION: To avoid losing data, save and close all open files and exit all open programs before you turn off your computer.**

1. Shut down the operating system:
 - In Windows 8:
 - Using a touch-enabled device:
 - a. Swipe in from the right edge of the screen, opening the Charms menu and select **Settings**.
 - b. Select the  and then select **Shut down**
 - Using a mouse:
 - a. Point to upper-right corner of the screen and click **Settings**.
 - b. Click the  and select **Shut down**.
 - In Windows 7:
 1. Click **Start** .
 2. Click **Shut Down**.

or

 1. Click **Start** .

2. Click the arrow in the lower-right corner of the **Start** menu as shown below, and then click




Shut Down..

2. Ensure that the computer and all attached devices are turned off. If your computer and attached devices did not automatically turn off when you shut down your operating system, press and hold the power button for about 6 seconds to turn them off.

After Working Inside Your Computer

After you complete any replacement procedure, ensure you connect any external devices, cards, and cables before turning on your computer.

1. Replace the cover.

 **CAUTION: To connect a network cable, first plug the cable into the network device and then plug it into the computer.**

2. Connect any telephone or network cables to your computer.
3. Connect your computer and all attached devices to their electrical outlets.
4. Turn on your computer.
5. If required, verify that the computer works correctly by running the Dell Diagnostics.

Removing and Installing Components

This section provides detailed information on how to remove or install the components from your computer.

Removing the Stand

1. Follow the procedures in [Before Working Inside Your Computer](#).
2. Place the computer on a flat surface, display facing downwards.
3. Pry and remove the hinge cover from the computer.



4. Perform the following steps as shown in the illustration:
 - a. Remove the screws that secure the stand to the computer [1].
 - b. Slide the stand from the computer [2].



5. Remove the stand from the computer.



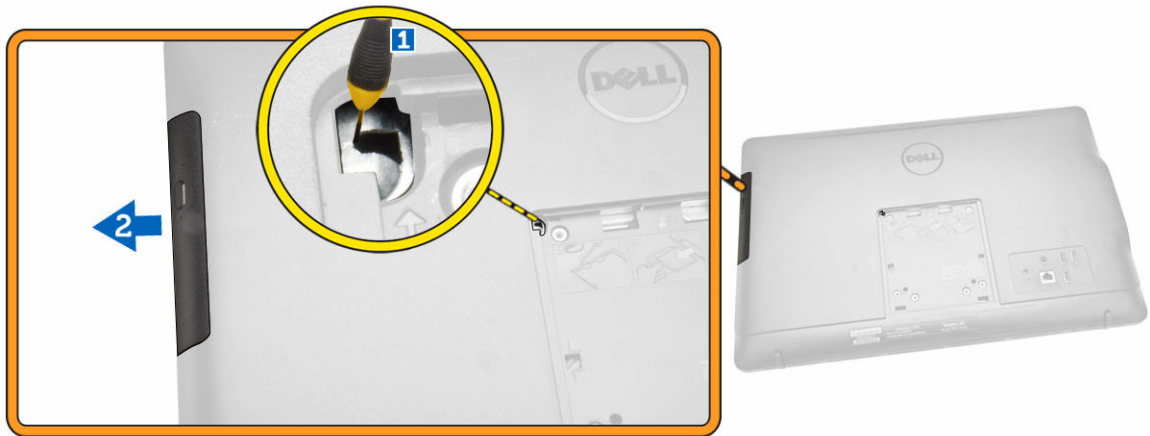
Installing the Stand

1. Align the stand on the computer, and tighten the screws to secure the stand to the computer.
2. Place and press the hinge cover on the computer until it clicks into place.
3. Follow the procedures in [After Working Inside Your Computer](#).

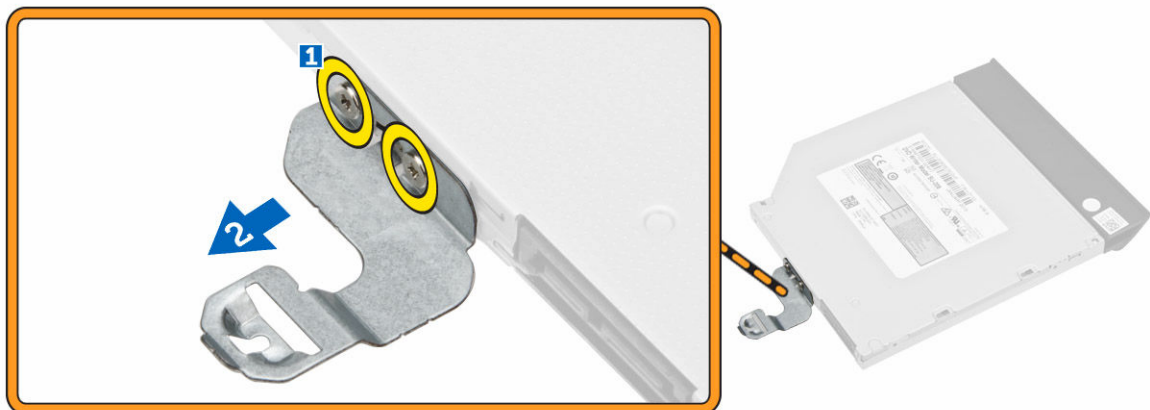
Removing the Optical-disk Drive

1. Follow the procedures in [Before Working Inside Your Computer](#).
2. Remove the [stand](#).

3. Perform the following steps as shown in the illustration:
 - a. Press on the tab indicated using a scribe [1].
 - b. Slide the optical-disk drive (ODD) out of the computer [2].



4. Remove the screws that secure the optical-disk drive bracket, and remove it from the optical drive [1,2].



Installing the Optical-disk Drive

1. Tighten the screws to secure the optical-disk drive bracket to the optical drive.
2. Insert the optical-disk drive into its slot until it clicks into place.
3. Install:
 - a. [stand](#)
4. Follow the procedures in [After Working Inside Your Computer](#).

Removing the Back Cover

1. Follow the procedures in [Before Working Inside Your Computer.](#)
2. Remove:
 - a. [stand](#)
 - b. [optical-disk drive](#)
3. Perform the following steps as shown in the illustration:
 - a. Pry the edge of the base cover [1].
 - b. Remove the back cover from the computer [2].

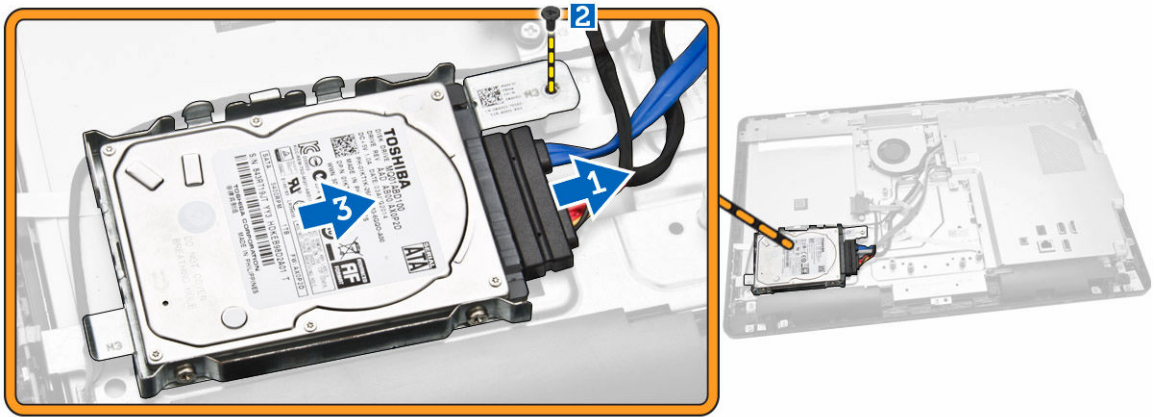


Installing the Back Cover

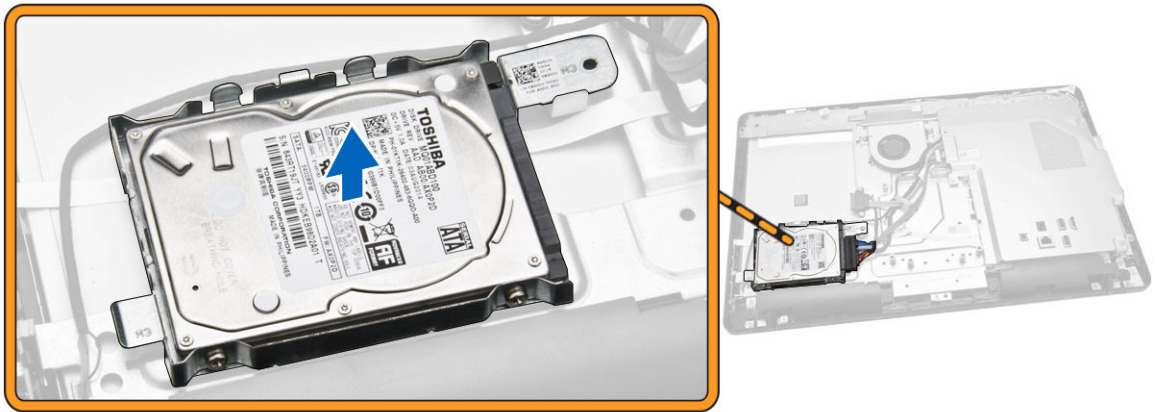
1. Align and press the back cover, until it clicks into place.
2. Install:
 - a. [optical-disk drive](#)
 - b. [stand](#)
3. Follow the procedures in [After Working Inside Your Computer.](#)

Removing the Hard Drive

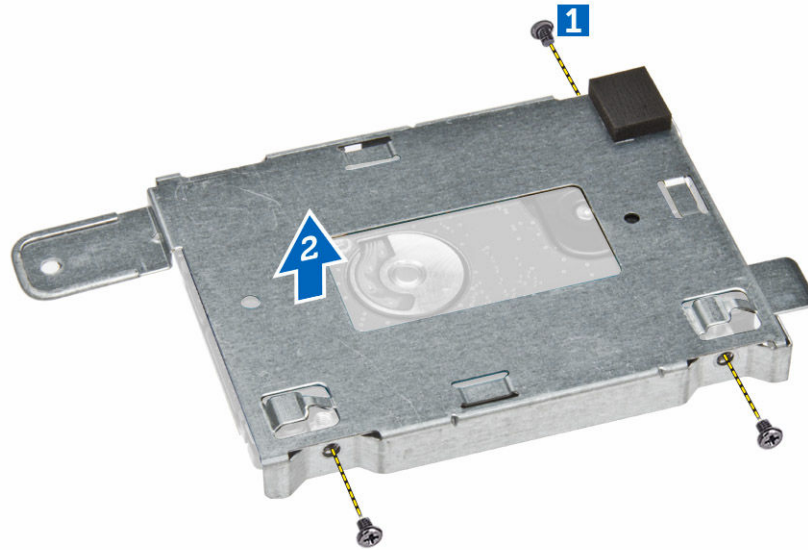
1. Follow the procedures in [Before Working Inside Your Computer.](#)
2. Remove:
 - a. [stand](#)
 - b. [optical-disk drive](#)
 - c. [back cover](#)
3. Perform the following steps as shown in the illustration:
 - a. Disconnect the hard-drive cable from the computer [1].
 - b. Remove the screw that secures the hard-drive to the computer [2].
 - c. Slide the hard-drive [3].



4. Remove the hard-drive from the computer.



5. Remove the screws that secure the hard-drive to the bracket, lift the hard-drive from bracket [1,2]

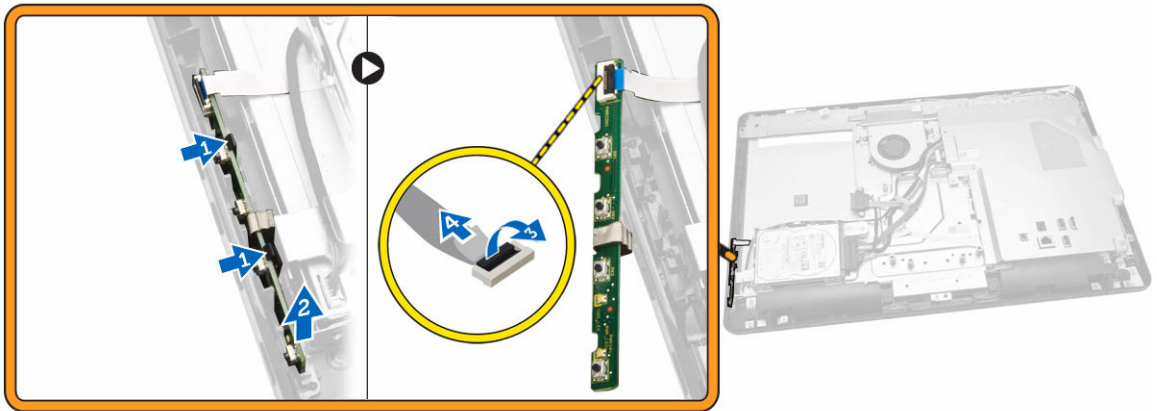


Installing the Hard Drive

1. Place the hard-drive in the bracket.
2. Tighten the screws that secure the hard-drive to the bracket.
3. Slide the hard-drive into the screw holes of the display bracket.
4. Tighten the screw that secures the hard-drive to the computer.
5. Connect the hard-drive cable.
6. Install:
 - a. [back cover](#)
 - b. [optical-disk drive](#)
 - c. [stand](#)
7. Follow the procedures in [After Working Inside Your Computer](#).

Removing the Power-Switch Board

1. Follow the procedures in [Before Working Inside Your Computer](#).
2. Remove:
 - a. [stand](#)
 - b. [optical-disk drive](#)
 - c. [back cover](#)
3. Perform the following steps as shown in the illustration:
 - a. Press the locking tab that secures the power-switch to the computer [1].
 - b. Lift the power-switch board [2].
 - c. Lift the lock tab and disconnect the power switch cable from the computer [3.4].

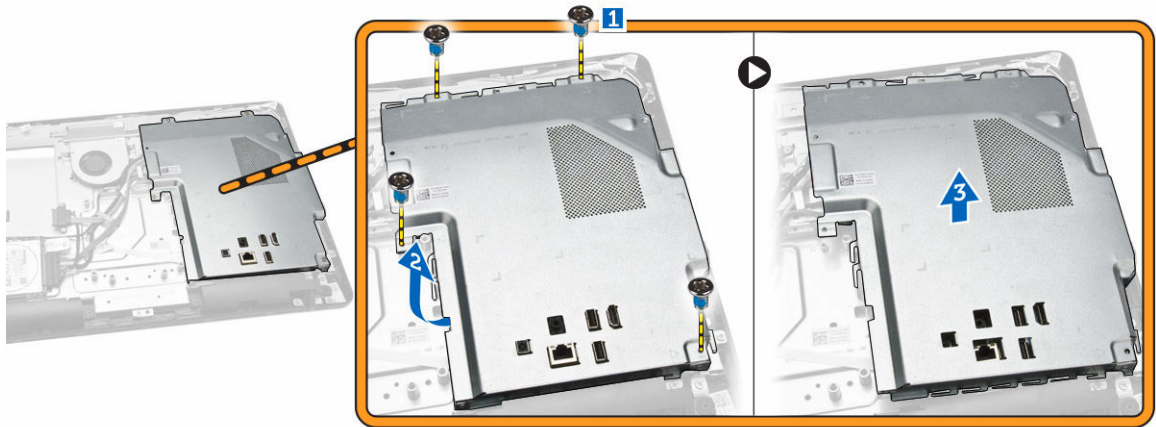


Installing the Power-Switch Board

1. Connect the power-switch cable to the power-switch board. Insert the power-switch board into its slot on the computer.
2. Install:
 - a. [back cover](#)
 - b. [optical-disk drive](#)
 - c. [stand](#)
3. Follow the procedures in [After Working Inside Your Computer](#).

Removing the System-Board Shield

1. Follow the procedures in [Before Working Inside Your Computer](#).
2. Remove:
 - a. [stand](#)
 - b. [optical-disk drive](#)
 - c. [back cover](#)
3. Perform the following steps as shown in the illustration:
 - a. Remove the screws that secure the system-board shield to the computer [1].
 - b. Lift the system-board shield from the computer [2].
 - c. Remove the system-board shield from the computer [3].

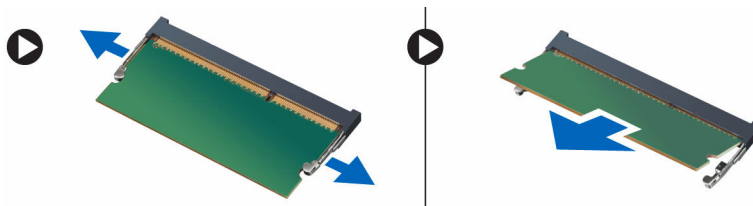


Installing the System-Board Shield


1. Align the system-board shield on the system board. Tighten the screws to secure it to the computer.
2. Install:
 - a. [back cover](#)
 - b. [optical-disk drive](#)
 - c. [stand](#)
3. Follow the procedures in [After Working Inside Your Computer](#).

Removing the Memory

1. Follow the procedures in [Before Working Inside Your Computer](#).
2. Remove:
 - a. [stand](#)
 - b. [optical-disk drive](#)
 - c. [back cover](#)
 - d. [system-board shield](#)
3. Pry the retention clips away from the memory module until it pops-up. Lift and remove the memory module from its connector.



Installing the Memory

 **NOTE:** Please use DIMM 2 slot if there is only one memory module available.

1. Align the notch on the memory-card with the tab on the system-board connector.
2. Press down on the memory module until the release tabs spring back to secure them in place.
3. Install:
 - a. [system-board shield](#)
 - b. [back cover](#)
 - c. [optical-disk drive](#)
 - d. [stand](#)
4. Follow the procedures in [After Working Inside Your Computer](#).

Removing the System Fan

1. Follow the procedures in [Before Working Inside Your Computer](#).
2. Remove:
 - a. [stand](#)
 - b. [optical-disk drive](#)
 - c. [back cover](#)
 - d. [system-board shield](#)
3. Perform the following steps as shown in the illustration:
 - a. Disconnect the system fan cable from the system board [1].
 - b. Remove the screws that secure the system fan to the computer [2].



4. Remove the system fan from the computer.

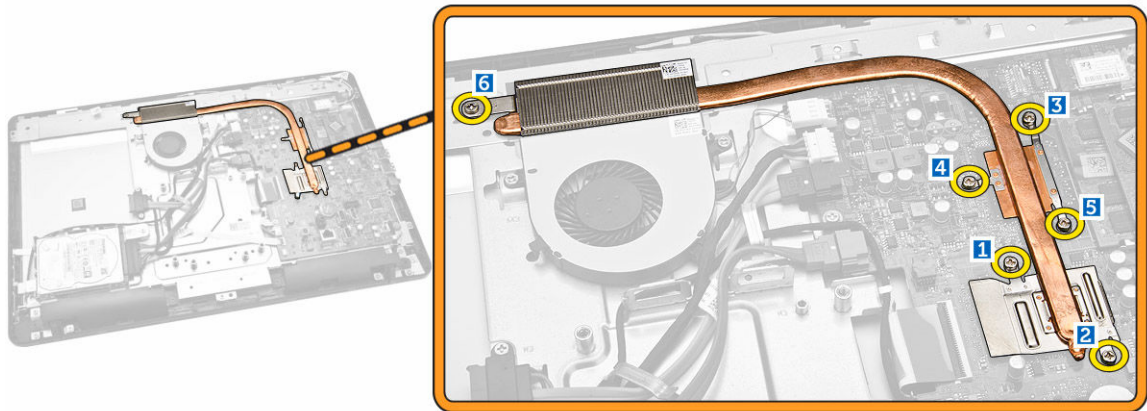


Installing the System Fan

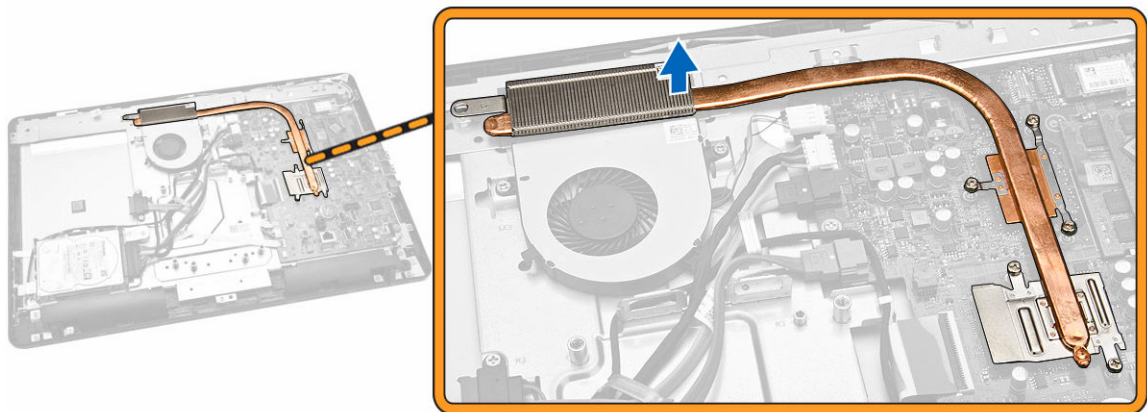
1. Align the system fan with the heatsink such that pins of the bracket are in line with the holes of the system fan and tighten the screws to secure it to the computer.
2. Connect the system-fan cable to the system board.
3. Install:
 - a. [system-board shield](#)
 - b. [back cover](#)
 - c. [optical-disk drive](#)
 - d. [stand](#)
4. Follow the procedures in [After Working Inside Your Computer](#).

Removing the Heatsink Assembly

1. Follow the procedures in [Before Working Inside Your Computer](#).
2. Remove:
 - a. [stand](#)
 - b. [optical-disk drive](#)
 - c. [back cover](#)
 - d. [system-board shield](#)
3. Remove the screws that secure the heatsink assembly to the system board [1,2,3,4,5,6].



4. Remove the heatsink assembly from the system board.



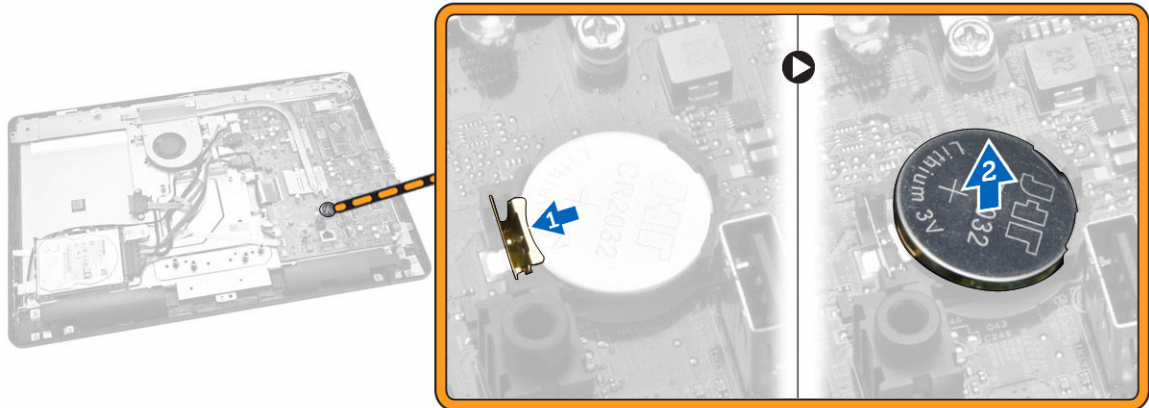
Installing the Heatsink Assembly

1. Install the heatsink assembly and tighten the screws to secure it to the system board.
2. Install:
 - a. [system-board shield](#)
 - b. [back cover](#)
 - c. [optical-disk drive](#)
 - d. [stand](#)
3. Follow the procedures in [After Working Inside Your Computer](#).

Removing the Coin-Cell Battery

1. Follow the procedures in [Before Working Inside Your Computer](#).
2. Remove:
 - a. [stand](#)
 - b. [optical-disk drive](#)

- c. [back cover](#)
- d. [system-board shield](#)
3. Press the release latch away from the battery and remove the coin-cell battery from the computer [1,2].

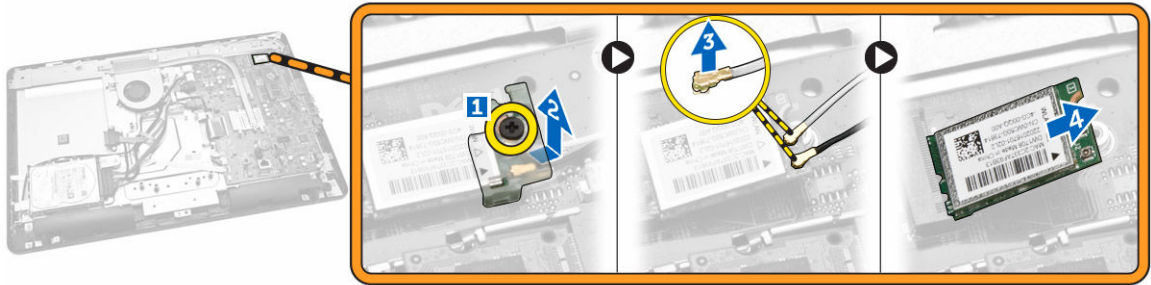


Installing the Coin-Cell Battery

1. Insert the coin-cell battery and press to lock it.
2. Install:
 - a. [system-board shield](#)
 - b. [back cover](#)
 - c. [optical-disk drive](#)
 - d. [stand](#)
3. Follow the procedures in [After Working Inside Your Computer](#).

Removing the WLAN Card

1. Follow the procedures in [Before Working Inside Your Computer](#).
2. Remove:
 - a. [stand](#)
 - b. [optical-disk drive](#)
 - c. [back cover](#)
 - d. [system-board shield](#)
3. Perform the following steps as shown in the illustration:
 - a. Remove the screw that secures the WLAN card and slide to remove the WLAN holder from the system board [1,2].
 - b. Remove the two connectors that secure the WLAN card to the system board [3].
 - c. Remove the WLAN card from its socket [4].

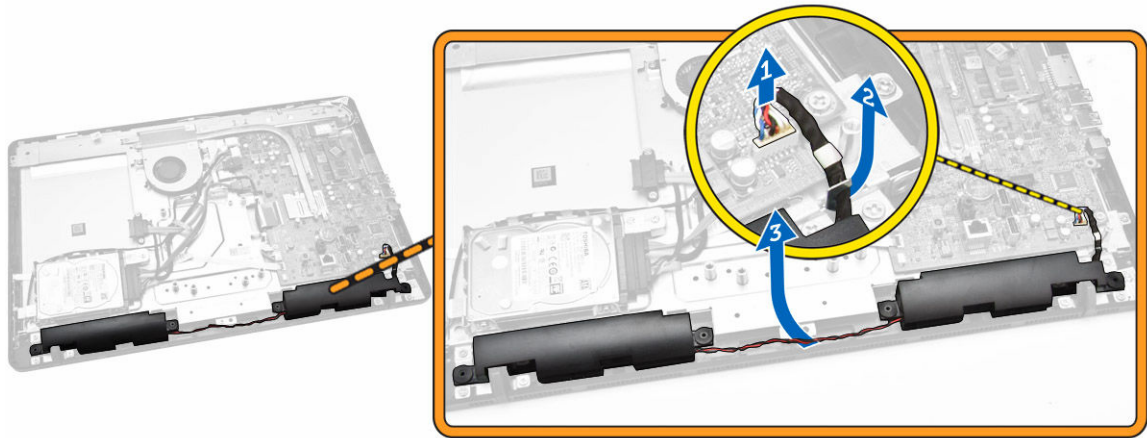


Installing the WLAN Card

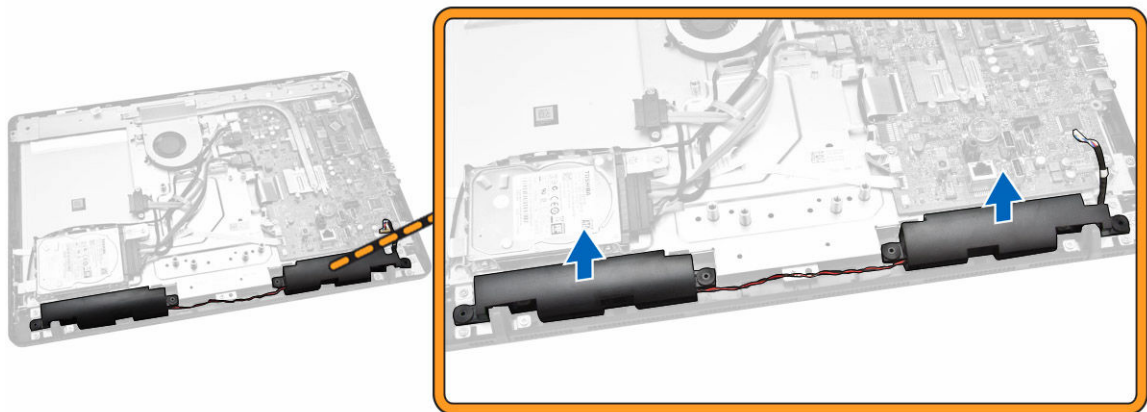
1. Insert the WLAN card into its slot.
2. Connect the two connectors (black cable to the black triangle and white cable to the white triangle).
3. Place the WLAN holder and tightened the screw that secures the WLAN card to the system board.
4. Install:
 - a. [stand](#)
 - b. [optical-disk drive](#)
 - c. [back cover](#)
 - d. [system-board shield](#)
5. Follow the procedures in [After Working Inside Your Computer](#).

Removing the Speakers

1. Follow the procedures in [Before Working Inside Your Computer](#).
2. Remove:
 - a. [stand](#)
 - b. [optical-disk drive](#)
 - c. [back cover](#)
 - d. [system-board shield](#)
3. Perform the following steps as shown in the illustration:
 - a. Disconnect the speaker cable [1].
 - b. Unroute the speaker cable [2].
 - c. Lift the speaker from the computer chassis [3].



4. Remove the speaker from the computer.

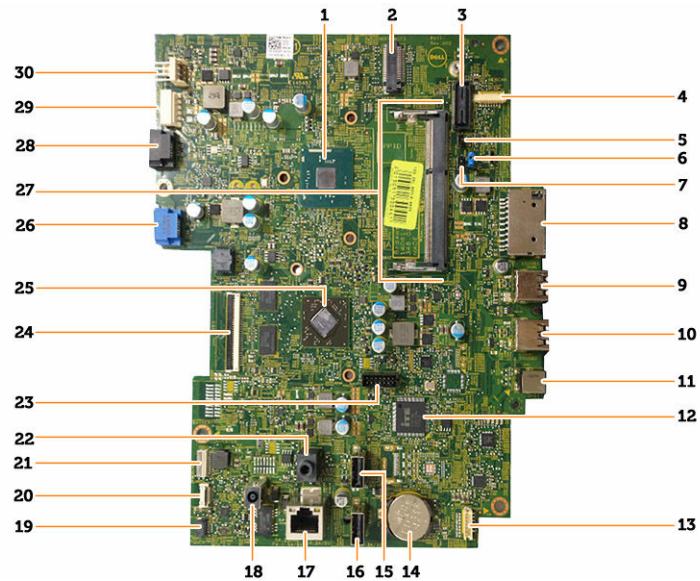


Installing the Speakers

1. Align the speakers on the computer.
2. Align the speaker cables through their tabs on the computer and connect the speaker cable to the system board.
3. Install:
 - a. [system-board shield](#)
 - b. [back cover](#)
 - c. [optical-disk drive](#)
 - d. [stand](#)
4. Follow the procedures in [After Working Inside Your Computer](#).

System Board Layout

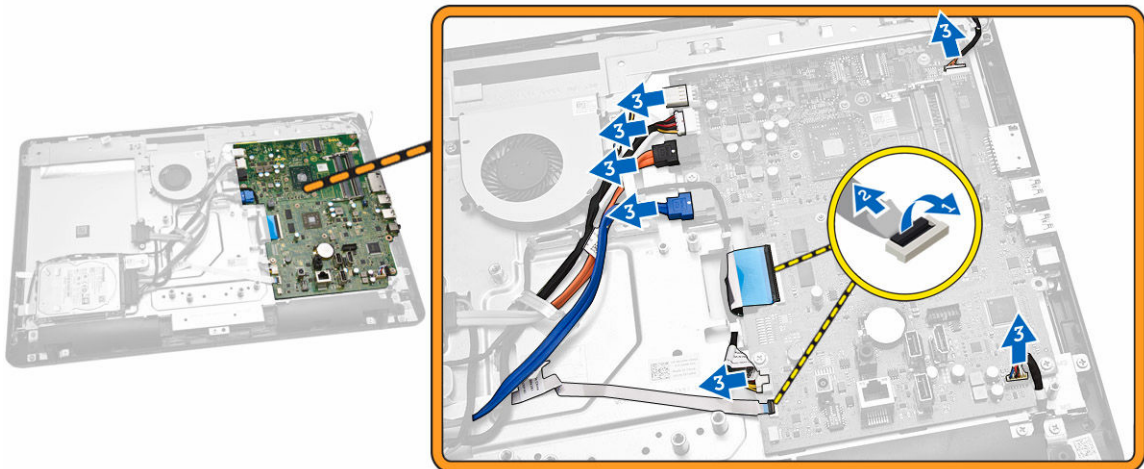
The following image displays the system board layout of the computer.



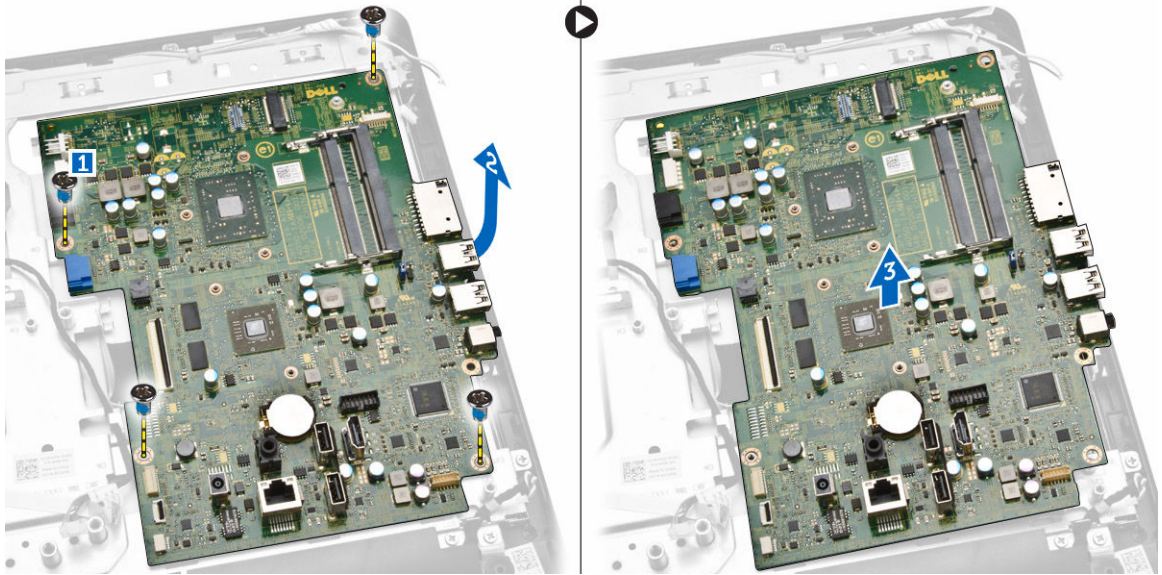
- | | |
|------------------------------|----------------------------|
| 1. Processor | 2. WLAN connector |
| 3. Reserved | 4. Webcam connector |
| 5. TXE header | 6. Password header |
| 7. CMOS clear header | 8. SD Card connector |
| 9. USB 3.0 port | 10. USB 3.0 port |
| 11. Universal Jack connector | 12. SIO IC |
| 13. Speaker connector | 14. Coin Cell Battery |
| 15. Rear USB 2.0 Port | 16. Rear USB 2.0 Port |
| 17. Network connector | 18. DC IN connector |
| 19. Touch connector | 20. Power switch connector |
| 21. Converter connector | 22. Audio Jack connector |
| 23. Reserved | 24. LVDS connector |
| 25. AMD GPU Mars_LE | 26. HDD port |
| 27. Memory socket | 28. HDD/ODD port |
| 29. HDD Power connector | 30. System fan connector |

Removing the System Board

1. Follow the procedures in [Before Working Inside Your Computer](#).
2. Remove:
 - a. [stand](#)
 - b. [optical-disk drive](#)
 - c. [back cover](#)
 - d. [system-board shield](#)
 - e. [heatsink](#)
 - f. [WLAN card](#)
 - g. [memory \(optional\)](#)
3. Disconnect the following from the system board [1,2,3]:
 - a. display assembly cable
 - b. system-fan cable
 - c. hard-drive cable
 - d. hard-drive/optical-drive power cable
 - e. power-switch cable
 - f. speaker cable
 - g. camera cable
 - h. convertor cable



4. Remove the screws that secure the system board to the computer. Slide and remove the system board to release it from the computer [1,2,3].



Installing the System Board

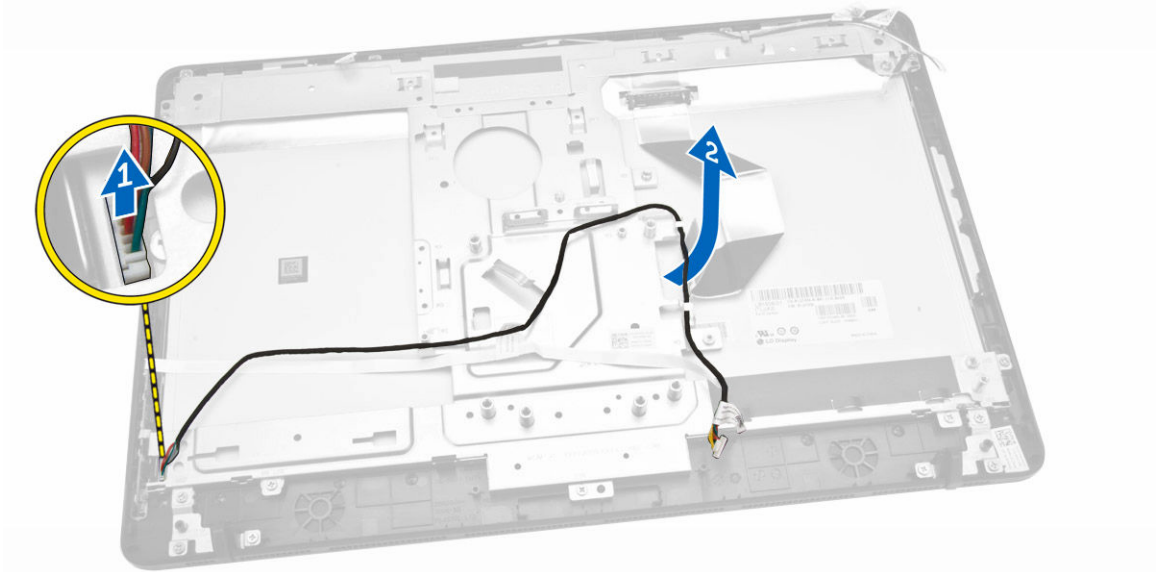
1. Align the system board on the computer.
2. Tighten the screws to secure the system board to the computer.
3. Connect the following cables to the system board:
 - a. camera cable
 - b. display assembly cable
 - c. system fan cable
 - d. hard-drive cable
 - e. hard-drive/optical-drive power cable
 - f. power-switch cable
 - g. speaker cable
 - h. convertor cable
4. Install:
 - a. [memory \(optional\)](#)
 - b. [WLAN card](#)
 - c. [heatsink](#)
 - d. [system-board shield](#)
 - e. [back cover](#)
 - f. [optical-disk drive](#)
 - g. [stand](#)
5. Follow the procedures in [After Working Inside Your Computer](#).

Removing the Display Assembly

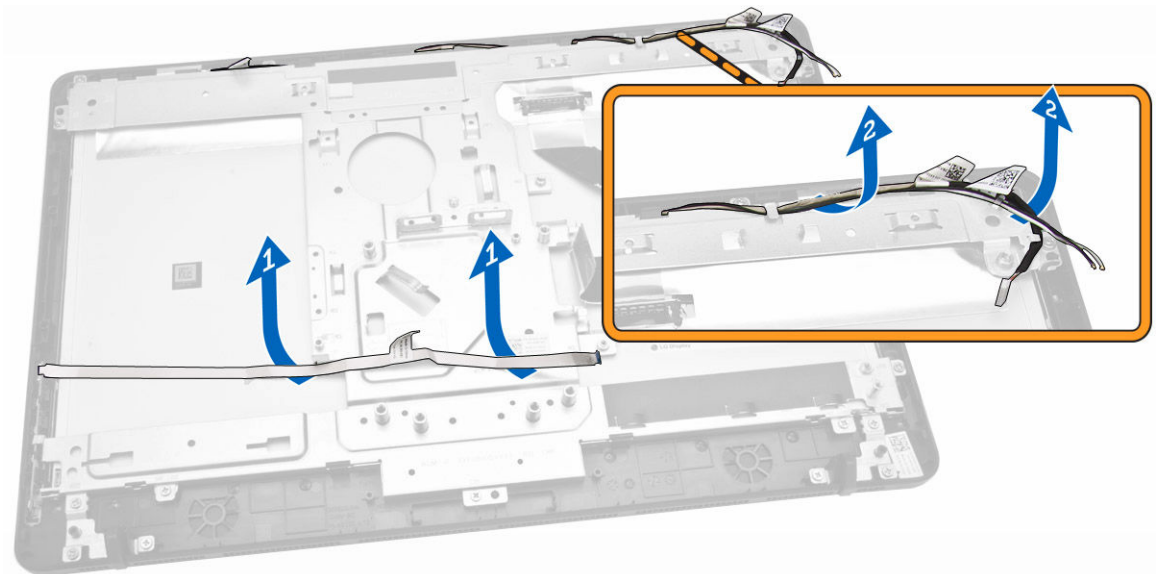
1. Follow the procedures in [Before Working Inside Your Computer](#).
2. Remove:
 - a. [stand](#)
 - b. [optical-disk drive](#)

- c. [back cover](#)
- d. [system-board shield](#)
- e. [hard drive](#)
- f. [speakers](#)
- g. [heatsink](#)
- h. [system fan](#)
- i. [memory](#)
- j. [WLAN card](#)
- k. [system board](#)

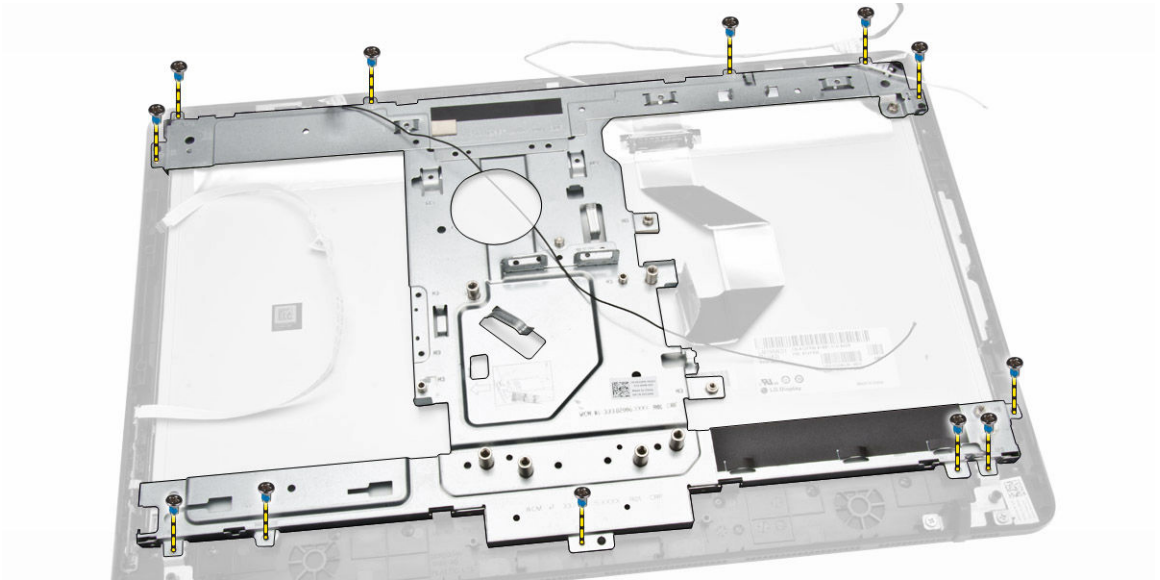
3. Perform the following steps as shown in the illustration:
- a. Disconnect converter cable [1].
 - b. Unroute the cable [2].



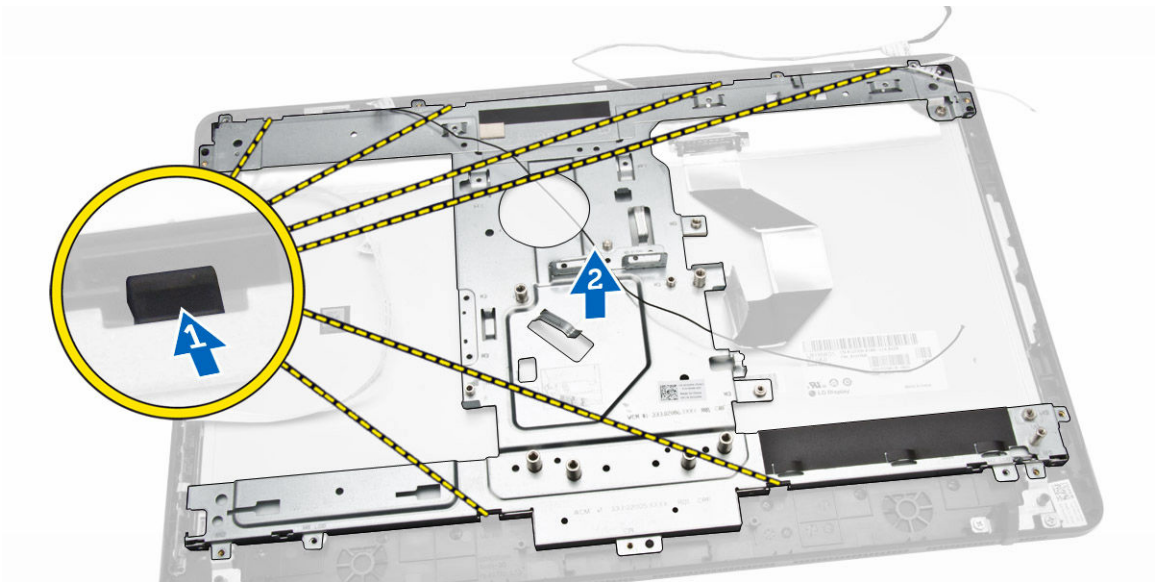
4. Perform the following steps as shown in the illustration:
- a. Peel the power cable tape that secures the display assembly cable [1].
 - b. Unroute the WLAN and camera cables [2].



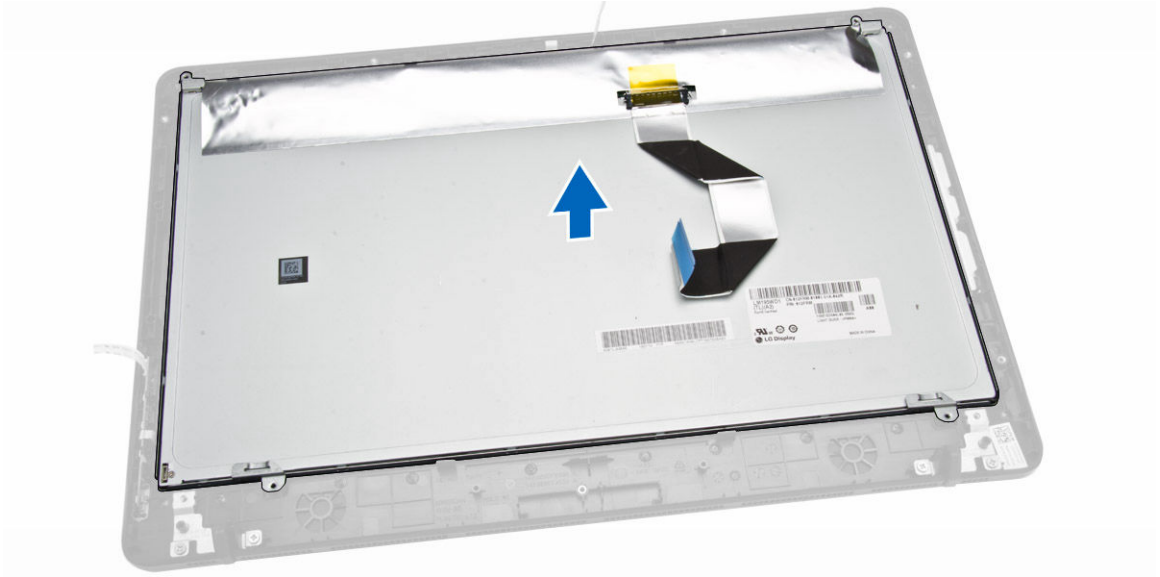
5. Remove the screws that secure the display bracket to the computer. Lift the display bracket.



6. Pry the edges of the display assembly from the computer.



7. Remove the display assembly from the computer.



Installing the Display Assembly

1. Align and press the display bracket on the computer.
2. Tighten the screws to secure the display bracket to the computer.
3. Align the display assembly cable through the tabs on the display bracket.
4. Install:
 - a. [system board](#)
 - b. [memory](#)
 - c. [WLAN card](#)
 - d. [system fan](#)
 - e. [heatsink](#)
 - f. [speakers](#)
 - g. [system-board shield](#)
 - h. [hard drive](#)
 - i. [optical-disk drive](#)
 - j. [back cover](#)
 - k. [stand](#)
5. Follow the procedures in [After Working Inside Your Computer](#).

System Setup

System Setup enables you to manage your computer hardware and specify BIOS-level options. From the System Setup, you can:

- Change the NVRAM settings after you add or remove hardware
- View the system hardware configuration
- Enable or disable integrated devices
- Set performance and power management thresholds
- Manage your computer security


Boot Sequence

Boot Sequence allows you to bypass the System Setup-defined boot device order and boot directly to a specific device (for example: optical drive or hard drive). During the Power-on Self Test (POST), when the Dell logo appears, you can:


- Access System Setup by pressing <F2> key
- Bring up the one-time boot menu by pressing <F12> key

The one-time boot menu displays the devices that you can boot from including the diagnostic option. The boot-menu options are:

- Removable Drive (if available)
- STXXXX Drive

 **NOTE:** XXX denotes the SATA drive number.

- Optical Drive
- Diagnostics

 **NOTE:** Choosing Diagnostics, will display the **ePSA diagnostics** screen.

The boot sequence screen also displays the option to access the System Setup screen.

Navigation Keys

The following table displays the system setup navigation keys.



 **NOTE:** For most of the system setup options, changes that you make are recorded but do not take effect until you re-start the system.

Table 1. Navigation Keys

Keys	Navigation
Up arrow	Moves to the previous field.
Down arrow	Moves to the next field.
<Enter>	Allows you to select a value in the selected field (if applicable) or follow the link in the field.
Spacebar	Expands or collapses a drop-down list, if applicable.
<Tab>	Moves to the next focus area.
	 NOTE: For the standard graphics browser only.
<Esc>	Moves to the previous page till you view the main screen. Pressing <Esc> in the main screen displays a message that prompts you to save any unsaved changes and restarts the system.
<F1>	Displays the System Setup help file.

Setup Utility Options

Main

The Main tab lists out the primary hardware features of the computer. The table below defines the function of each option.

System Time	Resets the time on the computer's internal clock.
System Date	Resets the date on the computer's internal calendar.
BIOS Version	Displays the BIOS revision.
Product Name	Displays the computer model number.
Service Tag	Displays the Service Tag of your computer.
Asset Tag	Displays the asset tag of your computer.
CPU Type	Displays the processor model number.
CPU Speed	Displays the processor speed.
CPU ID	Displays the processor ID.

CPU Cache		
	L1 Cache	Displays the processor L1 cache size.
	L2 Cache	Displays the processor L2 cache size.
Fixed HDD		Displays the HDD ID and capacity.
SATA ODD		Displays the type of ODD.
AC Adapter Type		Displays the power adapter type.
System Memory		Displays the memory capacity and type.
Extended Memory		Displays the extended memory capacity
Memory Speed		Displays the memory speed.

Advanced

The Advanced tab allows you to set various functions that affect the performance of the computer. The table below defines the function of each option and its default value.

Power Now - Enable	Allows you to enable or disable the Power Now-Enable.	Default: Enabled
Virtualization	Allows you to enable or disable the Virtualization.	Default: Enabled
Integrated NIC	Allows you to enable or disable the Integrated NIC.	Default: Enabled
SATA Operation	Allows you to choose the SATA operation mode.	Default: AHCI
Adapter Warnings	Allows you to enable or disable the Adapter Warnings.	Default: Enabled
Microphone	Allows you to enable or disable the Microphone.	Default: Enabled

Camera	Allows you to enable or disable the Camera mode.	Default: Enabled
Internal Bluetooth	Allows you to enable or disable the Internal Bluetooth.	Default: Enabled
Internal WLAN	Allows you to enable or disable the Internal WLAN	Default: Enabled
Media Card Reader	Allows you to enable or disable the Media Card Reader	Default: Enabled
Optical Device	Allows you to enable or disable the Optical Device	Default: Enabled
Boot Disable	Allows you to enable or disable the Boot Disable	Default: Disabled
USB Configuration		
Rear USB Ports	Allows you to enable or disable the rear USB ports.	Default: Enabled
Side USB Ports	Allows you to enable or disable the side USB ports.	Default: Enabled
USB debug	Allows you to enable or disable the USB debug	Default: Disabled
Power Options		
Wake Up By Integrated LAN/WLAN	Allows the computer to be remotely turned on.	Default: Disabled
AC Recovery	Allows you to select the power state of the computer after an AC power loss.	Default: Power Off
Deep Sleep Control	Allows you to select the Deep Sleep Control	Default: Enabled in S4 and S5

Auto Power On	Enable or disable the Auto Power On.	Default: Disabled
Auto Power On Mode	Allows you to control the power mode	
Auto Power On Date	Allows you to designate a specific date when the computer will turn on automatically	Default: Disabled
Auto Power On Time	Allows you to designate a specific time when the computer will turn on automatically	Default: Disabled

SMART Settings

SMART Self Test	Enable or disable the SMART Self Test	Default: Disabled
------------------------	---------------------------------------	-------------------

Security

The Security tab displays the security status and allows you to manage the security features of the computer.

Unlock Setup Status	Allows you to enable an Unlock Setup Status (Default: Unlocked)
Admin Password Status	Allows you to set, change or delete the administrator (admin) password status.
System Password Status	Allows you to set, change or delete the system password status.
HDD Passwords Status	Allows you to set, change or delete the password on the system hard-disk drive.
Asset Tag	
Admin Password	Allows you to set, change or delete the administrator (admin) password.
System Password	Allows you to set, change or delete the system password.
HDD Passwords	Allows you to set, change or delete the password on the system hard-disk drive.
Password Change	Allows you to enable the disable permission to the System and Hard Drive passwords when the admin password is set.
Password Bypass	Allows you to enable or disable the permission to bypass the System when they are set

Secure Boot Mode	This option enables or disables the Secure Boot Feature.	
Key Management		
Default Key Provisioning	This option enables or disables the Default Key Provisioning (Default: Disabled)	
Install Default Secure Boot keys	Allows you to enables you to Install Factory Secure Variables.	
Save All Secure Boot Variables	Allows you to Save All Secure Boot Variables.	
Platform Key (PK)		
Delete the PK	Allows you to Delete the PK.	
Set PK from Files	Allows you to Set PK from Files from Factory Default.	
Key Exchange Key Database (KEK)		
Delete the KEY	Allows you to Delete the KEK.	
Set KEK from Files	Allows you to Set KEY from Files from Factory Default.	
Append an entry to KEK	Allows you to Append KEK key from Factory Default.	
Authorized Signature Database (DB)		
Delete the DB	Allows you to Delete the DB.	
Set DB from Files	Allows you to Set DB from Files from Factory Default.	
Append an entry to DB	Allows you to Append DB key from Factory Default.	
Authorized TimeStamps		
Delete the DBT	Allows you to Delete the DBT.	
Set DBT from Files	Allows you to Set DBT from Files from Factory Default.	
Append an entry to DBT	Allows you to Append DBT key from Factory Default.	
HDD Protection	This option enables or disables the HDD Protection (Default: Disabled)	
HDD Recovery	This option enables or disables the HDD Recovery (Default: Enabled)	

Boot

The Boot tab allows you to change the boot sequence.

Boot List Option	Allows you to change the order in which the computer attempts to find an operating system.	Default: UEFI
File Browser Add Boot Option	Allows you to Add file browser boot option.	

File Browser Delete Boot Option	Allows you to Delete file browser boot option.	
Secure Boot	Enable or disable the Secure Boot Control.	Default: Enabled
Load Legacy Option ROM	This option control whether CSM should be loaded during POST.	Default: Disabled
Boot Option Priorities		
Boot Option 1	Allows you to select the 1st boot device preference	
Boot Option 2	Allows you to select the 2nd boot device preference	
Boot Option 3	Allows you to select the 3rd boot device preference	

Exit

This section allows you to save, discard and load default settings before exiting from Setup Utility.

Save Changes and Reset	Allows you to Save Changes and Reset default setting before exiting from Setup Utility.
Discard Changes and Reset	Allows you to Discard Changes and Reset default setting before exiting from Setup Utility.
Restore Defaults	Allows you to Restore Default setting before exiting from Setup Utility.
Discard Changes	Allows you to Discard Changes setting before exiting from Setup Utility.
Save Changes	Allows you to Save Changes setting before exiting from Setup Utility.


Updating the BIOS

It is recommended to update your BIOS (system setup), on replacing the system board or if an update is available. For laptops, ensure that your computer battery is fully charged and connected to a power outlet

1. Re-start the computer.
2. Go to dell.com/support.
3. Enter the **Service Tag** or **Express Service Code** and click **Submit**.



NOTE: To locate the Service Tag, click **Where is my Service Tag?**

 **NOTE:** If you cannot find your Service Tag, click **Detect My Product**. Proceed with the instructions on screen.

4. If you are unable to locate or find the Service Tag, click the Product Category of your computer.
5. Choose the **Product Type** from the list.
6. Select your computer model and the **Product Support** page of your computer appears.
7. Click **Get drivers** and click **View All Drivers**.
The Drivers and Downloads page opens.
8. On the Drivers and Downloads screen, under the **Operating System** drop-down list, select **BIOS**.
9. Identify the latest BIOS file and click **Download File**.
You can also analyze which drivers need an update. To do this for your product, click **Analyze System for Updates** and follow the instructions on the screen.
10. Select your preferred download method in the **Please select your download method below** window, click **Download File**.
The **File Download** window appears.
11. Click **Save** to save the file on your computer.
12. Click **Run** to install the updated BIOS settings on your computer.
Follow the instructions on the screen.


System and Setup Password

You can create a system password and a setup password to secure your computer.

Password Type	Description
System password	Password that you must enter to log on to your system.
Setup password	Password that you must enter to access and make changes to the BIOS settings of your computer.


 **CAUTION:** The password features provide a basic level of security for the data on your computer.

 **CAUTION:** Anyone can access the data stored on your computer if it is not locked and left unattended.

 **NOTE:** Your computer is shipped with the system and setup password feature disabled.

Assigning a System Password and Setup Password

You can assign a new **System Password** and/or **Setup Password** or change an existing **System Password** and/or **Setup Password** only when **Password Status** is **Unlocked**. If the Password Status is **Locked**, you cannot change the System Password.

 **NOTE:** If the password jumper is disabled, the existing System Password and Setup Password are deleted and you need not provide the system password to log on to the computer.

To enter a system setup, press <F2> immediately after a power-on or re-boot.

1. In the **System BIOS** or **System Setup** screen, select **System Security** and press <Enter>. The **System Security** screen appears.
2. In the **System Security** screen, verify that **Password Status** is **Unlocked**.
3. Select **System Password**, enter your system password, and press <Enter> or <Tab>.

Use the following guidelines to assign the system password:

- A password can have up to 32 characters.
- The password can contain the numbers 0 through 9.
- Only lower case letters are valid, upper case letters are not allowed.
- Only the following special characters are allowed: space, ("), (+), (,), (-), (.), (/), (:), (|), (\), (|), (').


Re-enter the system password when prompted.

4. Type the system password that you entered earlier and click **OK**.
5. Select **Setup Password**, type your system password and press <Enter> or <Tab>. A message prompts you to re-type the setup password.
6. Type the setup password that you entered earlier and click **OK**.
7. Press <Esc> and a message prompts you to save the changes.
8. Press <Y> to save the changes.
The computer reboots.

Deleting or Changing an Existing System and/or Setup Password

Ensure that the **Password Status** is Unlocked (in the System Setup) before attempting to delete or change the existing System and/or Setup password. You cannot delete or change an existing System or Setup password, if the **Password Status** is Locked.

To enter the System Setup, press <F2> immediately after a power-on or reboot.

1. In the **System BIOS** or **System Setup** screen, select **System Security** and press <Enter>. The **System Security** screen is displayed.
2. In the **System Security** screen, verify that **Password Status** is **Unlocked**.
3. Select **System Password**, alter or delete the existing system password and press <Enter> or <Tab>.
4. Select **Setup Password**, alter or delete the existing setup password and press <Enter> or <Tab>.
 **NOTE:** If you change the System and/or Setup password, re-enter the new password when prompted. If you delete the System and/or Setup password, confirm the deletion when prompted.
5. Press <Esc> and a message prompts you to save the changes.
6. Press <Y> to save the changes and exit from the System Setup.
The computer reboots.

Technical Specifications


 **NOTE:** Offerings may vary by region. The following specifications are only those required by law to ship with your computer. For more information about the configuration of your computer, go to **Help and Support** in your Windows operating system and select the option to view information about your computer.

Table 2. System Information

Feature	Specification
Processor type	2 MB cache
Total cache	Up to 4 MB cache depending on processor type

Table 3. Memory

Feature	Specification
Type	up to 1600 MHz
Connectors	one DIMM slots
Capacity	2 GB, 4 GB, and 8 GB
Minimum Memory	2 GB
Maximum Memory	8 GB

Table 4. Video

Feature	Specification
Video Controller:	
Integrated	SoC
Discrete	Radeon R5 A315
Video Memory	2 GB

Table 5. Audio

Feature	Specification
Controller	ALC3661-CG (Realtek)
Speaker	single 4-ohms, 2.5 W AVG speakers
Internal speaker amplifier	up to 3 W per channel
Internal microphone support	single digital microphone

Feature	Specification
Volume controls	Volume up/down buttons, program menus, and keyboard media-control keys

Table 6. Communications

Feature	Specification
Network adapter	Intel 10/100/1000 Mbps Ethernet LAN

Table 7. Displays

Feature	Specification
Type	19.5 inch HD+
Maximum resolution	1600 x 900
Refresh rate	60 Hz
Brightness	250nits
Operating angle	170 horizontal / 160 vertical
Pixel pitch	0.2712 mm x 0.2626 mm

Table 8. Drives

Feature	Specification
Hard drive	one 2.5-inch SATA drive
Optical drive (optional)	one DVD RW

Table 9. Ports and Connectors

Feature	Specification
Audio	one audio combo connector
Network adapter	one RJ45 connector
USB 2.0	two
USB 3.0	two
Media card reader	one 4-in-1 slot

Table 10. Power Adapter

Feature	Specification	
Type	45 W (UMA)	65W (Discrete)
Frequency	50 Hz - 60 Hz	
Voltage	100 VAC - 240 VAC	
Input current:	Maximum 1.7 A	Maximum 2.5 A
Adapter Physical Dimensions:		

Feature	Specification	
Height	26.00 mm (1.02 inches)	32.00 mm (1.3 inches)
Width	40.00 mm (1.57 inches)	52.00 mm (2.0 inches)
Depth	94.00 mm (3.70 inches)	128.00 mm (5.0 inches)
Coin-cell battery	3 V CR2032 lithium coin cell	

Table 11. Camera

Feature	Specification
Image resolution	2.0 Megapixel
Video resolution	HD / 720P / 0.92 Megapixels (1280 x 720 pixels)
Diagonal viewing angle	74 degrees

Table 12. Stand

Feature	Specification
Tilt	-5 degrees to 30 degrees

Table 13. Physical Dimensions

Feature	Without Stand	With Stand
Width	480.52 mm (18.91 inches)	480.52 mm (18.91 inches)
Height	317.64 mm (12.50 inches)	387.11 mm (15.24 inches)
Depth:	69.47 mm (2.73 inches)	204.98 mm (8.07 inches)
Weight:	3.42 kg (7.53 lb)	4.92 kg (10.84 lb)



NOTE: The weight of your computer may vary depending on the configuration ordered and the manufacturing variability. The above weight is without an optical-disk drive.

Table 14. Controls and Lights

Feature	Specification
Power button light	White light — Solid white light indicates power-on state; blinking white light indicates sleep state of the computer.
Hard Drive activity light	White light — Blinking white light indicates that the computer is reading data from or writing data to the hard drive.
Camera LED	White light — solid white light indicates that the camera is on.
Back panel:	
Link integrity light on integrated network adapter :	Green — a good 10 Mbps connection exists between the network and the computer. Orange — a good 1000 Mbps connection exists between the network and the computer.


Feature	Specification
	Off (no light) – the computer is not detecting a physical connection to the network.
Network activity light on integrated network adapter	Yellow light – A blinking yellow light indicates that network activity is present.
Power supply diagnostic light	Green light – The power supply is turned on and is functional. The power cable must be connected to the power connector (at the back of the computer) and the electrical outlet.

Table 15. Environmental

Feature	Specification
Temperature range:	
Operating	5 °C to 35 °C (41 °F to 95 °F)
Storage	–40 °C to 65 °C (–40 °F to 149 °F)
Relative humidity (maximum):	
Operating	10% to 90% (non-condensing)
Storage	10% to 95% (non-condensing)
Maximum vibration:	
Operating	0.66 GRMS
Storage	1.30 GRMS
Maximum shock:	
Operating	110 G
Storage	160 G
Altitude:	
Operating	–15.2 m to 3048 m (–50 to 10,000 ft)
Storage	–15.20 m to 10,668 m (–50 ft to 35,000 ft)
Airborne contaminant level	G2 or lower as defined by ANSI/ISA-S71.04-1985

Contacting Dell

Contacting Dell

 **NOTE:** If you do not have an active Internet connection, you can find contact information on your purchase invoice, packing slip, bill, or Dell product catalog.

Dell provides several online and telephone-based support and service options. Availability varies by country and product, and some services may not be available in your area. To contact Dell for sales, technical support, or customer service issues:

1. Go to **support.dell.com**.
2. Select your support category.
3. Verify your country or region in the **Choose a Country/Region** drop-down list at the bottom of the page.
4. Select the appropriate service or support link based on your need.