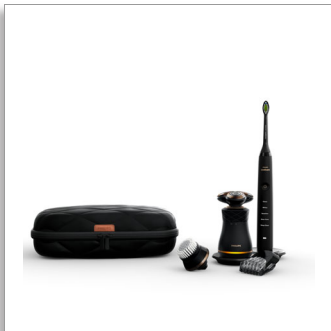




Philips
Premium men's care kit

IconiQ special edition shaver
DiamondClean sonic toothbrush
Wireless charging



S8880/68

Premium personal care experience

with wireless charging

Introducing the new Philips "Premium men's care kit" - the only all-in-one solution that delivers a premium personal care experience by taking care of your shaving, skin and oral care needs.

Timeless Design

- Retro-futuristic look with very refined details
- Optimal ergonomics to aid shaving result

Best shaving performance

- Cuts 30% closer in less strokes
- 8X-direction flex heads
- Aquatec Wet & Dry

Whiter, healthier teeth for life

- Sonic technology for a superior clean
- Up to 7X better plaque removal than a manual toothbrush
- 5 brushing modes for a customized clean

Smart of use

- One universal quick charge
- Click-on beard styler with 5 length settings
- More effective at cleaning your face than hand washing alone

PHILIPS

Highlights

One wireless charging solution



One wireless charging technology to charge all your personal care devices and even your smart phone.

V-Track Precision Blades



The V-track Precision Blades gently positions each hair in the best cutting position, even the flat laying and idfferent length of hairs. Cuts 30% closer in the less strokes leaving your skin in great condition.

Contour Detect Technology



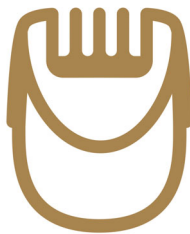
The new fully flexible 8X directional heads maximize facial adaptability requiring less effort in every stroke. Its independent movements allow to catch 20% more hairs for a clean shave in less strokes.

SmartClick cleansing brush



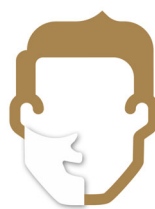
More effective at cleaning your face than hand washing alone*. Removes dead skin cells and increases micro-circulation to leave your skin feeling less oily, clean, fresh and radiant.

SmartClick beard styler



Change your look with the SmartClick Beard Styler attachment. Choose from 5 length settings to create anything from a perfect stubble look to a short, neatly trimmed beard. Rounded tips and combs are designed to prevent skin irritation.

Aquatec Wet & Dry



The AquaTec Wet & Dry seal of the electric shaver lets you choose how you prefer to shave. You can get a comfortable dry shave or using a shaving gel or foam for extra skin comfort.

Sonic technology



At over 31,000 brush strokes per minute, Philips Sonicare electric toothbrushes deliver a superior clean that you'll both see and feel. The dynamic cleaning action of our sonic technology drives fluid deep between teeth and along the gumline. You get a powerful yet gentle clean that delivers clinically proven results.

Removes up to 7X more plaque



Removes up to 7 times more plaque from hard to reach places than a manual toothbrush.

5 brushing modes



5 brushing modes for a customized clean (Clean, White, Sensitive, Gum Care, Deep Clean).

Retro-futuristic look

The shaver has very refined details, like its elegant combination of colors and textured finishes.

Specifications

Shaving Performance

- Shaving system: V-Track Precision Blade System, 8-direction ContourDetectHeads, Super Lift & Cut Action
- Skin comfort: AquaTec Wet & Dry

Cleaning performance

- Speed: Up to 31,000 brush strokes per minute
- Performance: Removes up to 7x more plaque*
- Health benefits: Improves gum health in only two weeks
- Whitening benefits: Whitens teeth in 1 week
- Timer: Smartimer and Quadpacer

Modes

- Clean: For exceptional everyday clean
- Gum Care: Gently massages gums
- Sensitive: Gentle teeth and gum cleaning
- White: Removes surface stains
- Deep Clean: For an invigorating deep clean

Accessories

- Wireless charging: Charging adaptor (IPX4), Wireless charging pad (IPX7)
- SmartClick: Oil-control cleansing brush, Beard styler
- Toothbrush heads: 2 DiamondClean standard heads

- Pouch: Soft pouch
- Maintenance: Cleaning brush, Protective cap, Holder tool

Ease of use

- Display: Battery low indicator, Charging Indicator with buzzer
- Cleaning: Fully washable
- USB interface: Support USB interface
- Brush head system: Easy click-on brush heads

Design

- Rotary switch
- Handle color: Magic black ultra matte
- On/Off switch color: Aluminium Black anodized brushed
- Accent color: Rose gold

Power

- Battery Type: Li-ion
- Run time: Up to 2 weeks' shave, Toothbrush up to 3 weeks
- Charging: 2 hours full charge, Quick charge for 1 shave, Toothbrush x hours full charge
- Automatic voltage: 100-240 V

Service

- 2-year guarantee
- Replacement head: Replace every 2 yrs with SH90



Issue date 2016-06-15

Version: 2.8.1

© 2016 Koninklijke Philips N.V.
All Rights reserved.

Specifications are subject to change without notice.
Trademarks are the property of Koninklijke Philips N.V.
or their respective owners.

www.philips.com

* For compatibility, look for the Qi logo (as picture below left) on supported devices. The Qi logo may be printed on the device, package or on the user manual. Devices with the Qi logo will be interoperable. The charge pad may not always work 100% on devices or accessories without the Qi logo.

* There are 3rd party vendors that sell Qi certified smartphone sleeves. They may carry the Qi logo will be guaranteed to work with the charge pad. There are many wireless charging accessories that are unlicensed and not tested. These will not carry the Qi logo and may not work with the charge pad.

* The charge pad may charge slower than a wired charger. That is due to the limitation of the bundled power adapter.

* Cut 30% closer in less strokes - versus SensoTouch

* SmartClick cleansing brush - compared to manual cleansing in same condition, according to the results from the external clinical test on 30 candidates and in 3 hours after cleansing

* Removes up to 7x more plaque - than a manual toothbrush.