

# DAILY REFERENCE GUIDE



## THANK YOU FOR PURCHASING A WHIRLPOOL PRODUCT

To receive more comprehensive help and support, please register your product at [www.whirlpool.eu/register](http://www.whirlpool.eu/register)



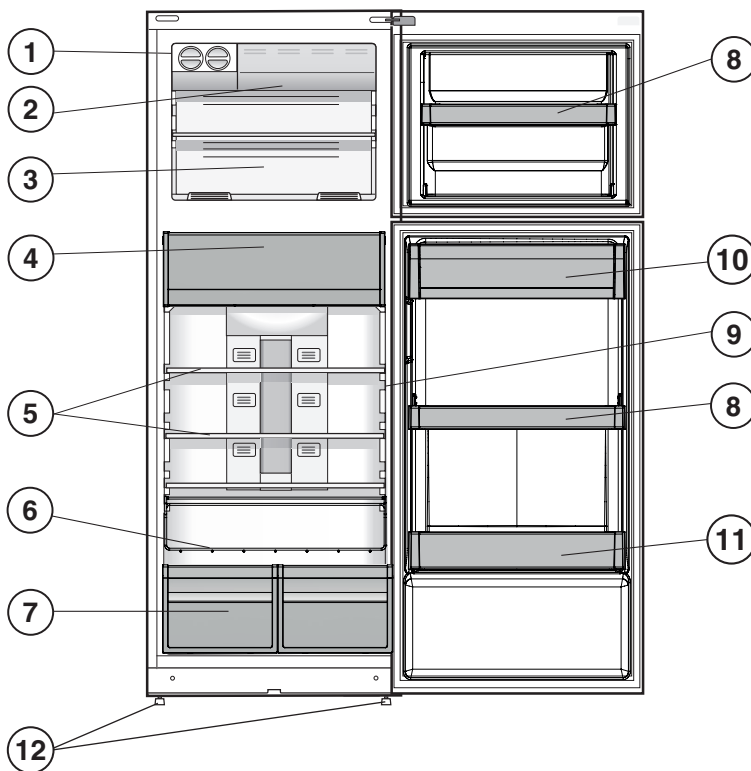
You can download the Safety Instructions and the Use and Care Guide by visiting our website [www.whirlpool.eu](http://www.whirlpool.eu) and following the instructions on the back of this booklet.



**Before using the appliance carefully read the Health and Safety guide.**

## PRODUCT DESCRIPTION

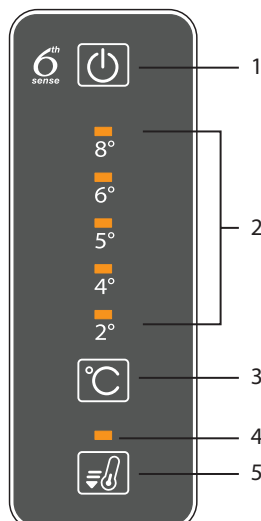
### APPLIANCE



1. Ice Device \*
2. Quick Freezer \*
3. Freezer And Storage Compartment
4. Food Care Zone 0 °C / Safe Defrost \*
5. Shelves \*
6. Bottle Rack \*
7. Fruit And Vegetable Bin \*
8. Movable Shelves \*
9. Temperature Indicator \*
10. Dairy Shelf \*
11. Bottle Shelf
12. Levelling Feet

\* Varies by number and/or position, available only on certain models.

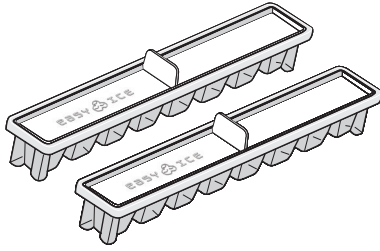
### CONTROL PANEL



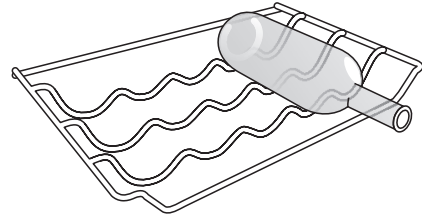
1. On/Off
2. Fridge temperature indicator
3. Fridge temperature setting
4. Fast freeze indicator light
5. Fast freeze button

# ACCESSORIES

## EASY ICE



## BOTTLE RACK



# FIRST TIME USE

## HOW TO START THE APPLIANCE

After plugging the appliance to the mains, it starts the operation automatically. After starting the appliance, wait at least 4-6 hours before placing food into the fridge and into the freezer compartment.

When the appliance is connected to the power supply, the display lights up and all the icons appear on the display for approximately 1 second. The default (factory) values of the fridge - freezer compartment settings light-up.

# DAILY USE

See Use and Care Guide for more details on functions / see last page for information on how to obtain the Use and Care Guide

## FUNCTIONS

### ON/OFF

The whole product (both fridge and freezer compartments) can be turned on by pressing this button for 2 seconds. The last set value is indicated on the interface. Press this button to turn off the device. An audible signal will confirm the "off commutation of the product".



### FRIDGE TEMPERATURE

To adjust the Fridge Temperature, press the Fridge °C button. The Fridge Temperature can be adjusted between +2°C and +8°C, as shown by the Fridge Temperature LEDs. It shows the temperature of the fridge compartment. It allows you to change the fridge temperature value, in a cyclical way; it also confirms the selected temperature on the interface.

### FAST FREEZE BUTTON

Fast freezing is to be used to freeze fresh foods. When it is pressed, the Fast cool indicator light illuminates.



### TEMPERATURE INDICATOR \*

Temperature indicator informs you if the temperature in this cavity is cold enough for storage with the word "OK".

1. Check that OK appears clearly on the indicator light (see the picture below).



2. If the word "OK" does not appear it means that the temperature is too high: set a lower temperature and wait approximately 10 hours until the temperature has been stabilised.
3. Check the indicator light again: if necessary, readjust it following the initial process. If large quantities of food have been added or if the refrigerator door has been opened frequently, it is normal for the indicator not to show OK. Wait at least 10 hours before adjusting the REFRIGERATOR OPERATION knob to a higher setting.

### FOOD CARE ZONE 0°C / SAFE DEFROST \*

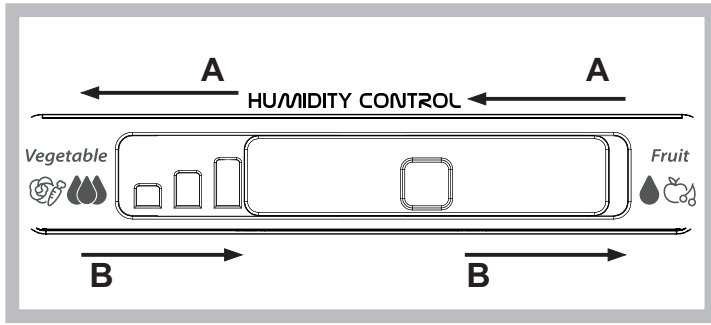
A compartment designed to keep delicate food such as meat and fish fresh. The low temperature in the compartment makes it possible to store the food for up to one week - tests performed on meat products - without changing its nutrients, appearance and flavour.

The compartment is also very suitable for healthy food defrosting, as low-temperature defrosting prevents any proliferation of microorganisms, while protecting its taste and organoleptic properties.

It is not suitable for fruit, vegetables and green salad. But it can be used for stuffed fresh pasta and even cooked food or leftovers.

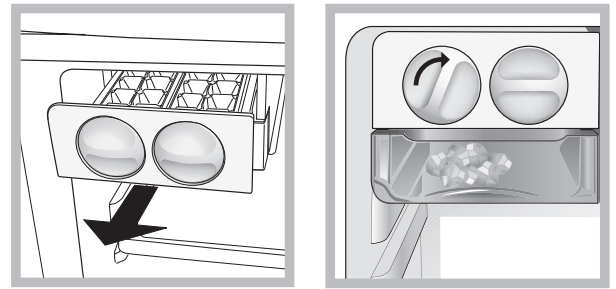
**FRUIT AND VEGETABLE BIN \***

The salad crispers fitted inside the fridge have been specially designed for the purpose of keeping fruit and vegetables fresh and crisp. Open the humidity regulator (position B) if you want to store food in a less humid environment like fruit, or close it (position A) to store food in a more humid environment like vegetable.



**ICE DEVICE \***

After pouring water in the special ice cups, place them in their places in the ice device. After about 2 hours, the ice cubes will be ready. In order to get the ice cubes, it will be sufficient to turn the two buttons to the right. The ice cubes will fall in to the tray below, ready to be used.



**SHELVES \***

Due to the special guides the shelves are removable and the height is adjustable, allowing easy storage of large containers and food.

**ALARM TABLE**

ALARM TYPE	SIGNAL	CAUSE	SOLUTION
Door open alarm.	Refrigerator Light blinks. Alarm Indicator blinks.	The door has remained open for more than 2 minutes.	Close the door or press the Stop Alarm to mute the acoustical alarm.
Temperature Alarm.	Refrigerator Light OFF.	The door has remained open for more than 4 minutes.	Close the door.
Malfunction.	Any temperature indicators blinks.	Product malfunction.	Contact the After-sales Service.

**SOME OF THE FUNCTIONAL SOUNDS YOU MIGHT HEAR**

A hissing sound when switching on the appliance for the first time or after a long pause.



A gurgling sound when refrigerant fluid enters into the pipes.



BRRR sound is from the compressor running.



Buzzing sound when water valve or fan start working.



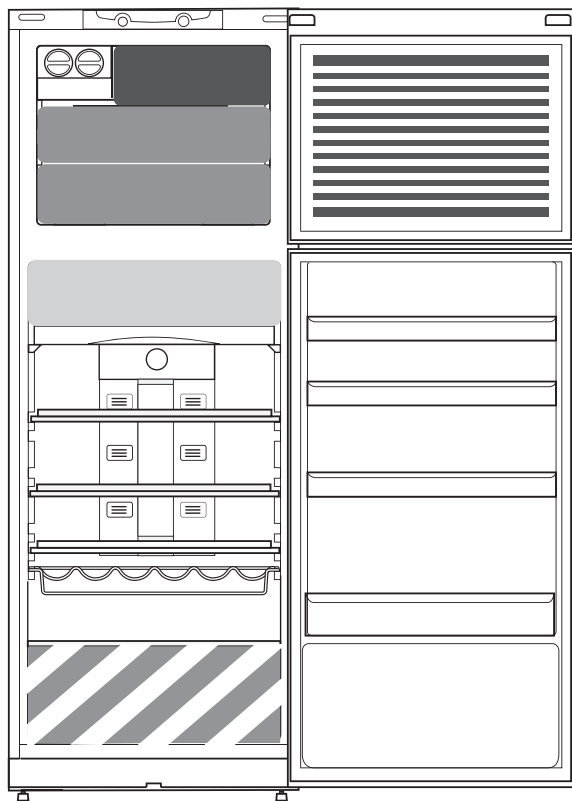
A cracking sound when compressor starts.



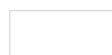
The CLICK is from the thermostat which adjusts how often the compressor is running.



# HOW TO STORE FOOD AND BEVERAGE



## Legend



### COOL ZONE

Suggested for the storage of beverage, milk and food as dairy food, delicatessen, yogurt, eggs, butter, sauces, pickles, desserts



### COOLER ZONE:

#### FOOD CARE ZONE 0 °C / SAFE DEFROST \*

Suggested for the storage of meat, fish, cold cuts, stuffed fresh pasta, cooked food, leftovers. This zone is also suggested for food defrosting.



### FRUIT & VEGETABLE DRAWER



### FAST FREEZING ZONE DRAWER

Max cool zone suggested to freeze fresh food and cooked food.



### NORMAL FREEZER DRAWERS

Suggested for the storage of frozen food and ice cream.



### ICE CREAM LOADING IN THE BALCONIES AREA

Note: The Grey tone of the legend doesn't match with the color of drawers

## FRIDGE COMPARTMENT

Use recyclable plastic, metal, aluminum and glass containers and cling film to wrap foods.

Always use closed containers for liquids and for food that may give off or be tainted by odor or flavor transfer or cover them.

If you have a little quantity of food to store in the refrigerator, we recommend to use the shelves above the crisper for fruits and vegetables since this is the coolest area of the compartment.

Foods which give off a large amount ethylene gas and those that are sensitive to this gas, such as fruit, vegetables and salad, should always be separated or wrapped so as not to reduce the storage life; for example do not store tomatoes together with kiwi fruits or cabbage.

To avoid bottles falling over, you can use the bottle holder (available on selected models).

Do not store food too close together to enable sufficient air circulation.

## FREEZER COMPARTMENT

The freezer is the ideal storage location for store frozen food, make ice cubes and freeze fresh food in the freezer compartment.

The maximum number of kilograms of fresh food that can be frozen within a 24-hour period is indicated on the rating plate (...kg/24h).

If you have a little quantity of food to store in the freezer, we recommend to use the coldest areas of your freezer compartment, corresponding to the middle area.

## PRODUCT FICHE

[www](http://docs.www.whirlpool.eu) The product fiche with energy data of this product can be downloaded from Whirlpool Website <http://docs.www.whirlpool.eu>

## HOW TO OBTAIN THE USE AND CARE GUIDE

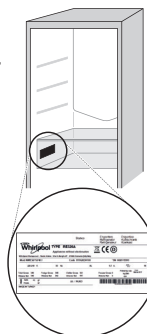
> [www](http://docs.www.whirlpool.eu) Download the Use and Care Guide from the website <http://docs.www.whirlpool.eu> (you can use this QR code), specifying the product's commercial code.

> As an alternative, contact the After-Sales Service



## CONTACTING AFTER-SALES SERVICE

You can find our contact details in the warranty manual. When contacting our Client After-Sales Service, please state the codes provided on your product's identification plate.



19514340200

Printed in Italy