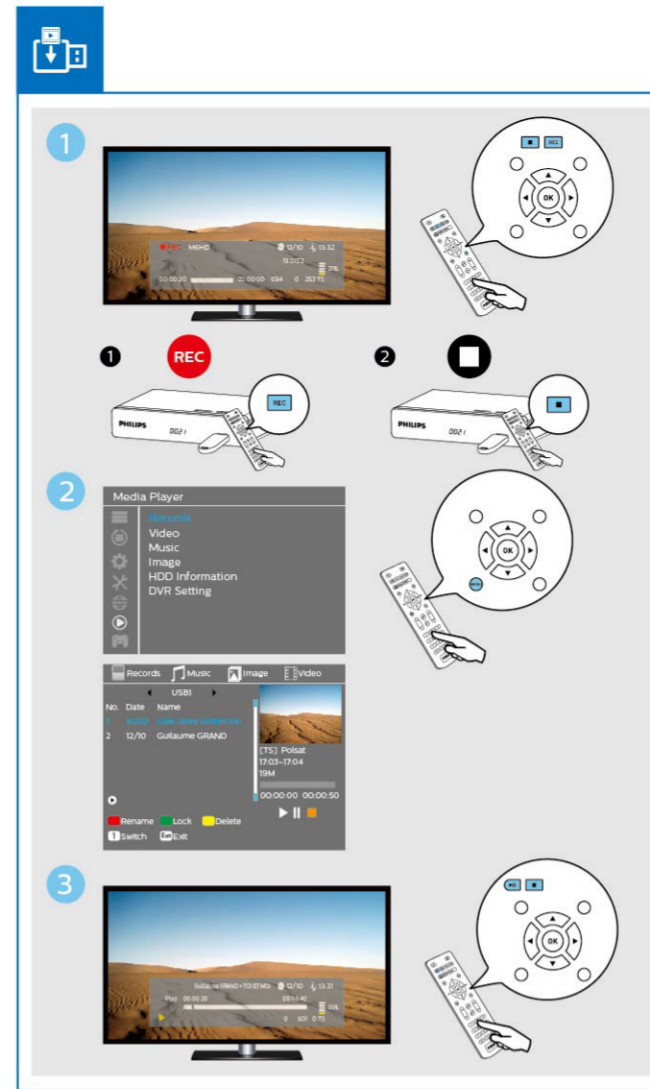
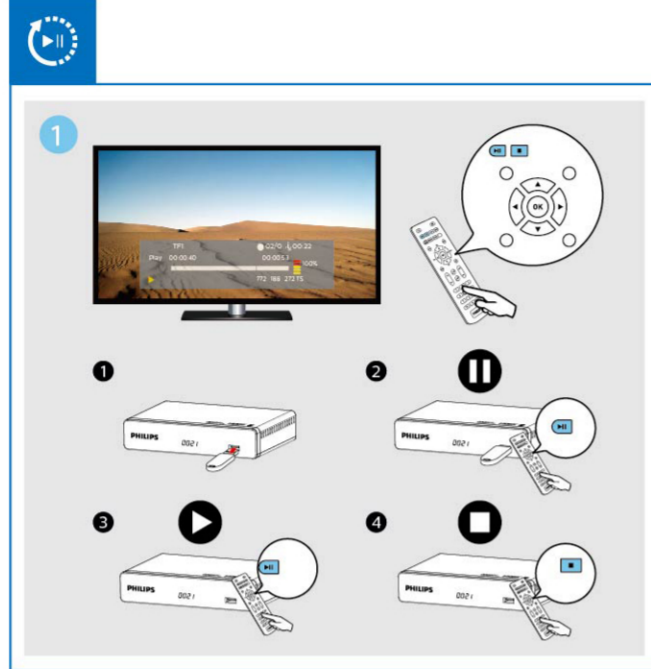




HDMI, HDMI logo and High-Definition Multimedia Interface are trademarks or registered trademarks of HDMI Licensing LLC.  
Philips and the Philips Shield Emblem are registered trademarks of Koninklijke Philips NV, used under license.  
This product was brought to the market by X-GEM SAS, further referred to in this document as X-GEM SAS,  
and is the manufacturer of the product.  
© 2015 X-GEM SAS.  
All rights reserved.

Headquarters: X-GEM SAS  
9 rue de la Nègresse  
64200 Biarritz - FRANCE  
Tel : +33 (0)5 59 41 53 10 Fax : + 33 (0)5 59 41 53 09  
www.xgem.com



PHILIPS

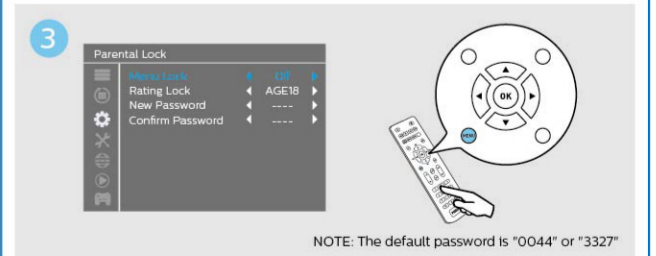
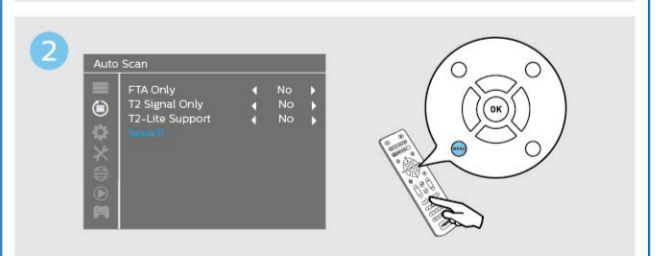
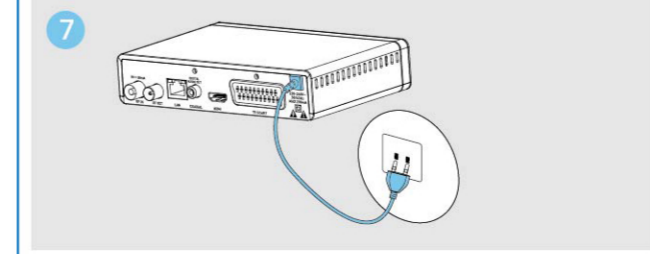
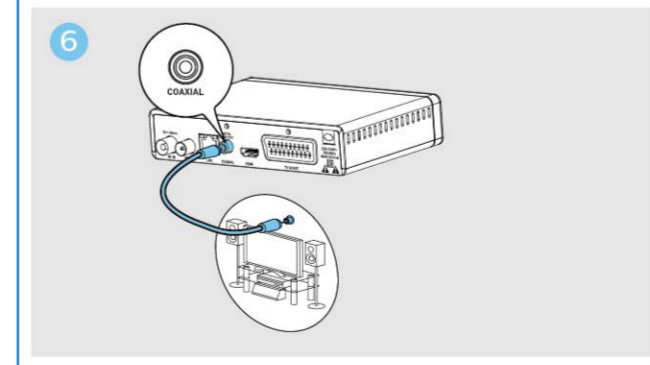
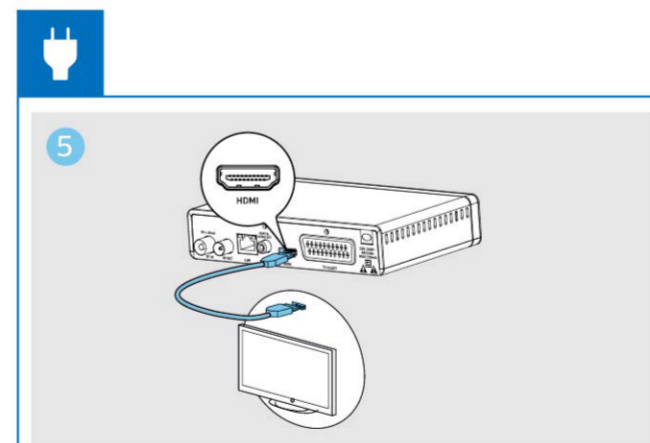
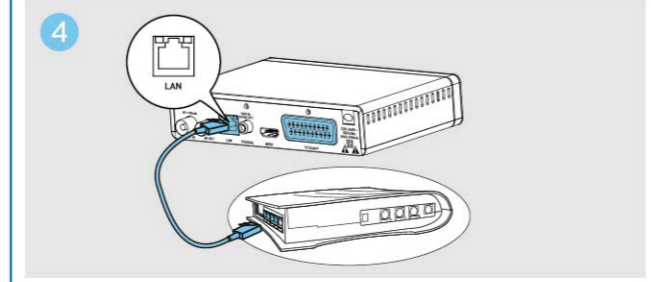
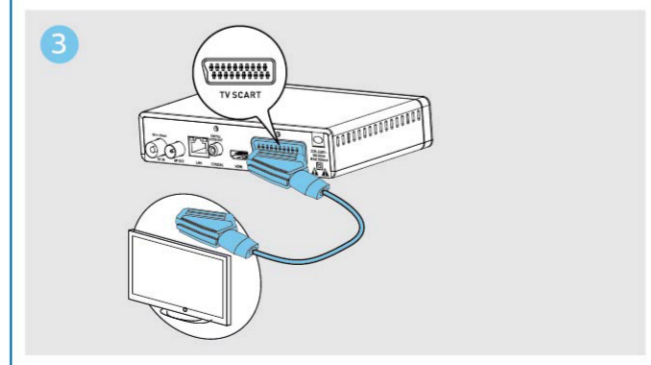
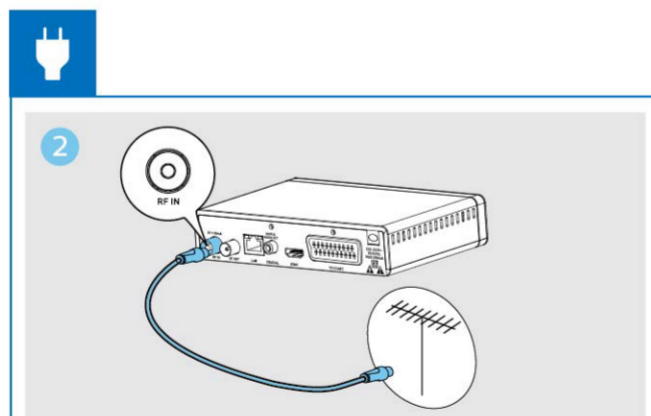
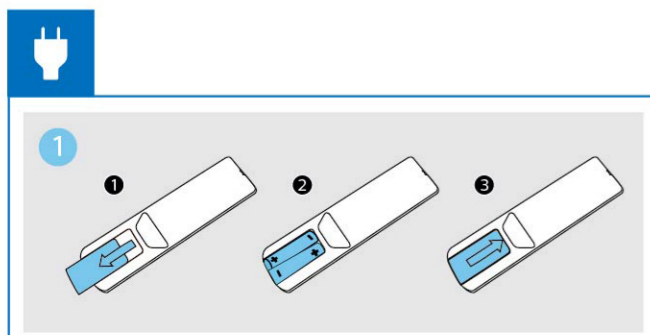
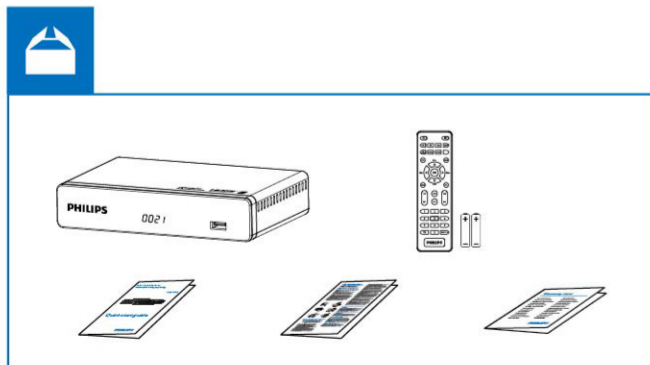
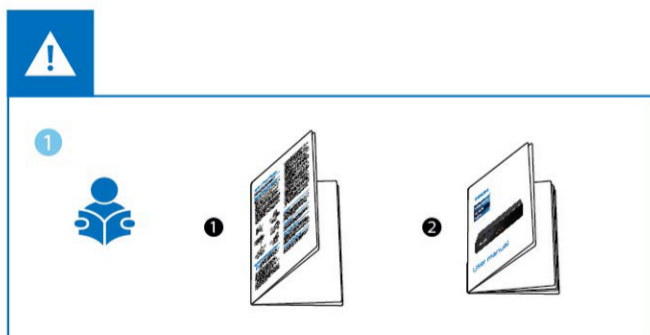
Terrestrial digital  
HD receiver

DVB-T2

DTR3202



Quick start guide



NOTE: The default password is "0044" or "3327"

