

PHILIPS

IPL hair removal
device

Lumea Prestige

With SenseIQ technology

Underarms, bikini, body, face

With SmartSkin sensor

Both cordless and corded use



BRI956/00



Enjoy 6 months of hair-free smooth skin*

4 intelligent attachments – for optimal results

Philips Lumea Prestige with SenseIQ technology is our most effective IPL. Designed for convenient treatment at home, Lumea's intelligent attachments perfectly fit every curve of your body and adapt programs tailored for each body area.

Maximum freedom, minimum hassle

- No replacement parts, no hidden costs
- The Lumea IPL app. With you every step of the way
- With SmartSkin sensor

Long-lasting smooth skin with Lumea IPL technology

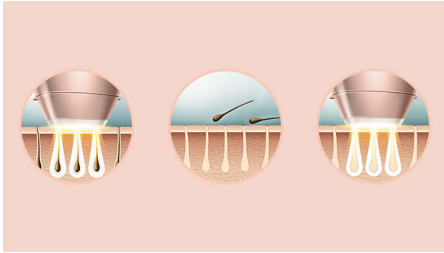
- Expert IPL technology at-home, developed with dermatologists
- Use cordless or corded
- Proven gentle and effective treatment
- Suitable for a wide range of hair and skin types
- SenseIQ technology for personalized hair removal

Professional IPL treatment for specific body areas

- Bikini area attachment with extra light filter
- Body attachment with curved-in design
- Intelligent attachments adapt programs for each body area
- Underarm attachment with curved-out design

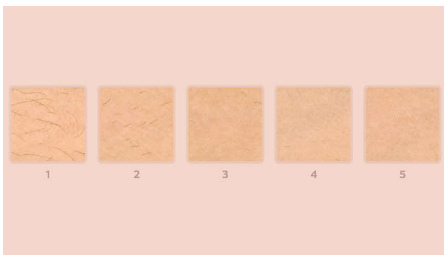
Highlights

Lumea prevents hair regrowth*



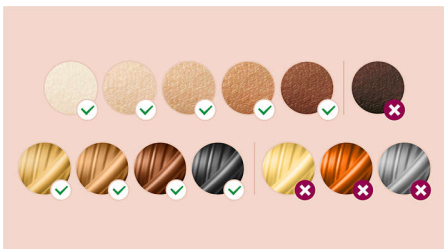
IPL stands for Intense Pulsed Light. Philips Lumea applies gentle pulses of light to the hair root, putting the follicle into a resting phase. As a consequence, the amount of hair your body grows gradually decreases. Repeating the treatment leaves your skin beautifully hair free and touchably smooth. Treatment to prevent hair regrowth is safe and gentle, even on sensitive areas. Philips Lumea is clinically tested and developed with dermatologists for easy and effective treatment, from the comfort of your own home.

Proven effectiveness



Objective studies show up to 92% hair reduction after three treatments**. Carry out the first four treatments every two weeks, and the next eight treatments every four weeks. After 12 treatments you can enjoy six months of hair-free smooth skin*.

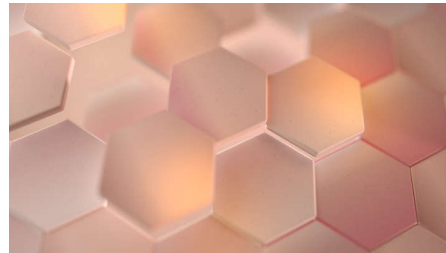
Suitable hair and skin types



Philips Lumea Prestige is effective on a wide range of hair and skin types. It works on naturally dark blonde, brown and black hair

and on skin tones from very white to dark brown. IPL needs contrast between the pigment in the hair color and the pigment in the skin tone, therefore (as with other IPL-based treatments) Lumea cannot be used to treat white, grey, light blonde or red hair. And is not suitable for very dark skin.

SenseIQ technology



Senses. Lumea's SmartSkin sensor detects your skin tone and indicates the most comfortable light setting for you. Adapts. Intelligent attachments adapt programs tailored for each body area. Cares. Co-developed with dermatologists and inspired by you for gentle, long-lasting hair removal, even on sensitive areas***.

Treatment of body areas



Your body is unique. And its skin, curves and contours should be treated uniquely too. Lumea's total-body attachments are shaped to perfectly fit every curve, and will adapt programs tailored to each body area. Treatment windows are designed to maximize contact with your skin to ensure light doesn't escape, enabling effective and gentle treatments even on delicate or sensitive areas.

Underarm attachment



Specially designed to treat hard-to-reach underarm areas, the intelligent underarm attachment is medium-sized with a 3 cm² window. When the attachment is clicked on to the device it adapts a tailored program for your underarm area. 86% of women satisfied with hair reduction on underarms****.

Bikini attachment



Click on the intelligent bikini attachment and it will adapt a tailored program specifically for that area. It has an optimal 3 cm² window with a transparent filter for extra comfort and the curved design compliments your body's contours for maximum contact, efficiency and comfort. 78% of women satisfied with hair reduction in bikini area****.

Specifications

Technical specs. attachments

Body treatment attachment: Shape: Convex curved, Window size: 4.1 cm², Tailored treatment for body

Face treatment attachment: Shape: Flat, Window size: 2 cm², extra filter, Tailored treatment for face

Armpits treatment attachment: Shape: Concave curved, Window size: 3 cm², Tailored treatment for armpits

Bikini treatment attachment: Shape: Concave curved, Window size: 3 cm², extra filter, Tailored treatment for bikini

Application areas

Body areas: Arms, Legs, Stomach

Sensitive areas: Armpits, Bikini

Face areas: Chin, Upper lip, Jawline

Safety and adjustable settings

Integrated UV filter: Protects skin from UV light

5 light energy settings: Adjustable to your skin type

Integrated safety system: Prevent unintentional flashing

Skin Tone sensor: Detects your skin tone

SmartSkin sensor: The right setting on demand

Application mode

Slide and Flash: For quick application

Stamp and Flash: For treatment on small areas

Corded / cordless use: Both cordless and corded use

Power

Voltage: 100-240 V

Technical specifications

High performance lamp: Delivers 450,000 flashes, equivalent to 39 years of lamp lifetime*****

Service

Warranty: 2 years global warranty + 1 extra year of warranty upon product registration within 90 days

Items included

Instructions for use: User manual

Storage: Luxurious pouch

Adapter: 19.5V / 4000mA

Application time

Armpit: 2,5 min

Bikini line: 2 min

Face areas: 1,5 min

Lower legs: 8,5 min



* Median hair reductions after 12 treatments: 78% on legs, 64% on bikini, 65% on armpits

* * Measured on legs, after 3 treatments, 27 out of 55 women reach 92% or higher results

* ** When following the treatment schedule

* *** Study conducted in Netherlands and Austria, 56 women, after 3 treatments on armpits, bikini, legs, after 2 treatments on face

* **** The lamp lifetime does not extend the Philips 2 years worldwide warranty

* ***** When following treatment schedule. Calculated for use on lower legs, bikini, armpits and face. The lamp lifetime does not extend the Philips 2 years worldwide guarantee