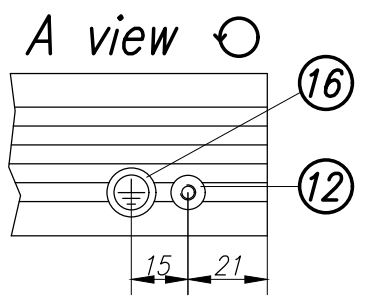
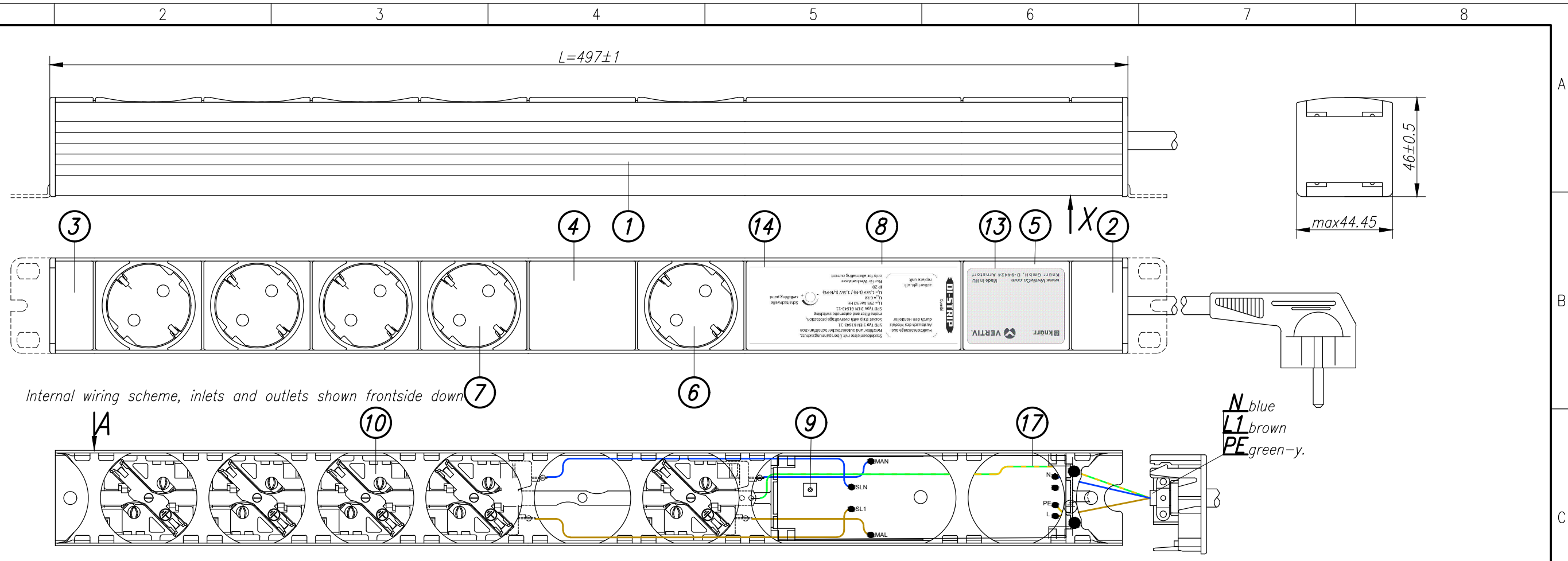


Disclosure and photocopying of this document, exploitation and communication of its contents are not permitted, unless permission is expressly granted. All rights are reserved.

DI-STRIP

Weitergabe sowie Vervielfältigung dieser Unterlage, Verwertung und Mitteilung ihres Inhalts nicht gestattet, soweit nicht ausdrücklich zugestanden. Alle Rechte vorbehalten.



**Example of label:**

Technical data:  
 - DIN 49440 SCHUKO socket 16A  
 socket spacing 50mm, torsion of sockets 45°  
 - with Combi module

knürr VERTIV  
 DI-STRIP COMBI  
 CE  
 240 Vac, 50-60 Hz  
 max. 16A  
 max. 8A @ cos φ=0,4  
 03.320.0051 YY/MM XXXXXX  
 www.VertivCo.com Made in HU  
 Knürr GmbH, D-94424 Arnstorf

Drawing no.	Description	L (mm)	Color of chassis	No. of sockets	Gross weight (kg)	Net weight (kg)	External dimensions of packing box (mm)
03.320.009.1	DIS-EEV CEE7/7-16A 9P CB	697	RAL7035 light grey	8+1	1,52	1,033	760x60x80
03.320.005.1	DIS-EEV CEE7/7-16A 5P CB	497	RAL7035 light grey	4+1	1,20	1,06	580x60x75

17	1	ST	Vezeték zöld-sárga 1,5mm <sup>2</sup>	Electric cord green-yellow	3.768.2863	L=200(EO-EO)
----	---	----	---------------------------------------	----------------------------	------------	--------------

A belső vezetékezés komponensei. / Components of internal wiring.

<p><b>Technical data:</b></p> <p>Load rating:                  240 Vac, 50-60 Hz                  Input: 1x 16 A                  Output: 16 A</p> <p>Operating temperature: 0 ... +50 °C</p>	<p><b>Approvals/certificates:</b></p> <p>- CE marking according to: LVD (low voltage directive), RoHS (restriction of hazardous substances)                  - BV-BG certification (factory inspected)</p>	<p><b>Power cord:</b></p> <p>Type: H05VV-F 3x1,5mm<sup>2</sup>, white                  Length: 2,5m                  Plug: CEE VII/7, DIN49441 Form2</p>	<p><b>Packaging:</b></p> <p>Plastic bag, collection box (PE tömlő és gyűjtőcsomagolás)                  Supply schedule:                  Socket strip (1 piece)                  Mounting bracket (2 pieces) 3.768.2608                  User manual (1 piece) 03.300.999.1</p>	<p>Dimensions in mm</p>	<p>General tolerances: ISO 2768-m</p> <p>Finish: Kovács</p> <p>Material: Szabó</p>	<p>Sheet: 1/1</p>
<p><b>Material/Finish:</b></p> <p>Chassis: closed sheet steel extrusion, zincplated, powder-coated texture                  Plastic parts: Vampamid 6 0024 VO (UL94) or similar, recyclable                  Internal conduction: brass conductor rails and copper wires                  Internal copper wires: H07V-K 1,5mm<sup>2</sup></p> <p><b>Color:</b></p> <p>Chassis:                  Plastic parts: RAL7021 black grey, RAL7035 light grey</p>	<p><b>knürr</b></p>	<p>Drawing no. 03.320.005.X-009.X</p> <p>Gross weight kg, Net weight kg, External dimensions of packing box mm</p>				
<p>Rev. 18027 09.08.17 Gali</p>	<p>Knürr GmbH Mariakirchener Straße 38                  D-94424 Arnstorf Tel: +49 (0) 87 23-27-0</p>	<p>Platine: File:</p>				