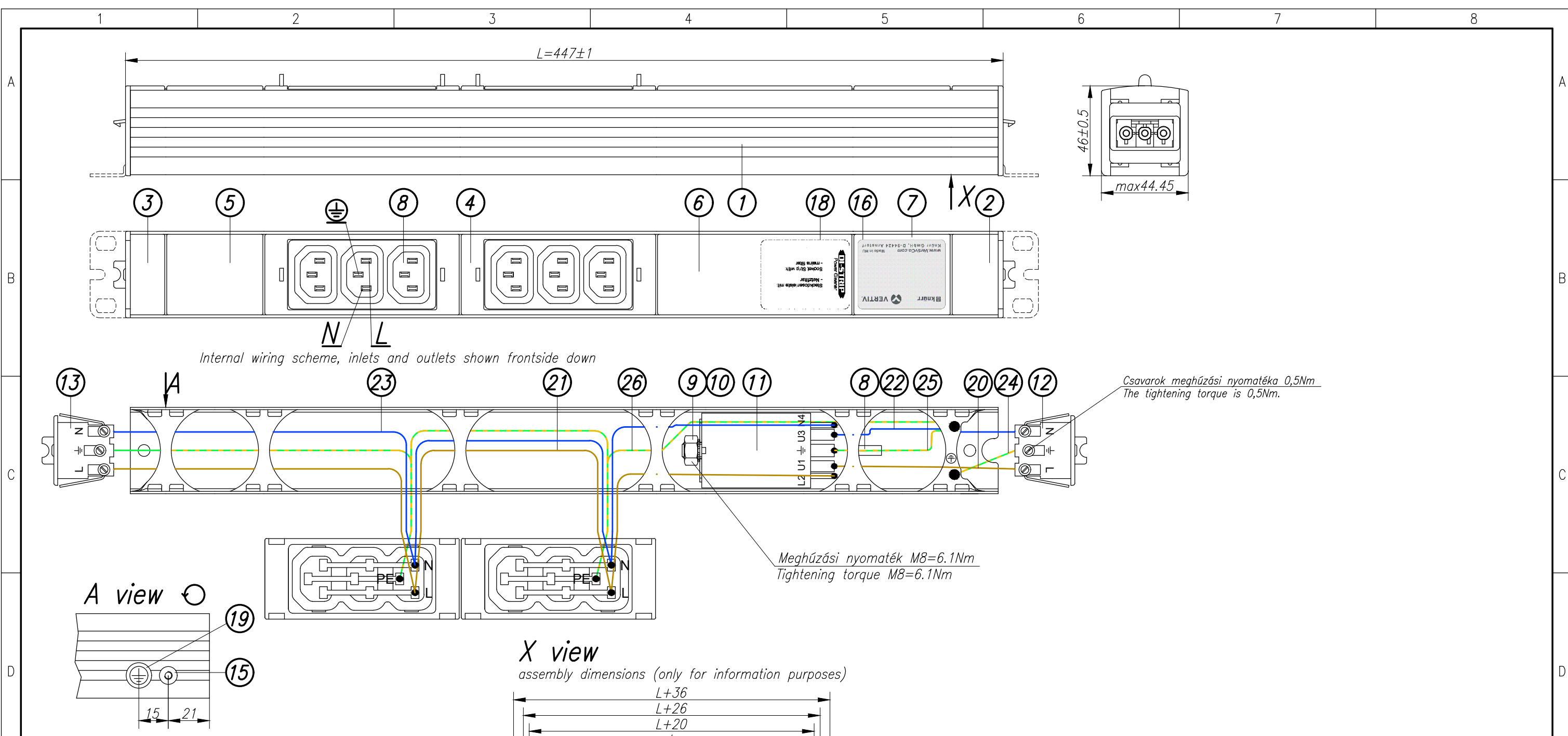


Disclosure and photocopying of this document, exploitation and communication of its contents are not permitted, unless permission is expressly granted. All rights are reserved.



Technical data:

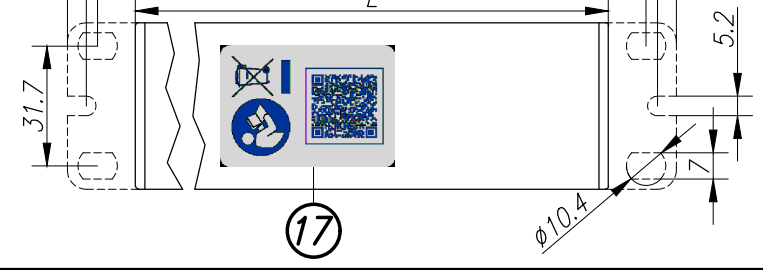
- 6x IEC60320 Sheet F 10A socket socket spacing 24mm, torsion of sockets 0°
- with mains filter
- output GST18i socket on side part

– Operating temperature: 0 ... +50 °C

knürr **VERTIV**

DI-STRIP
Euro-Connector-System
IEC320
100-240 Vac, 50-60 Hz
max. 16A
Netzfilter/mains filter

03.612.206.1 YY/MM XXXXXX
www.VertivCo.com Made in HU
Knürr GmbH, D-94424 Arnstorf



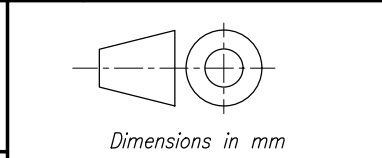
No.	Qty	Code	Description	Material	Part No.	Length
20	1	ST	Vezeték bama 1,5mm ²	Electric cord brown	8.768.4280	L=100(EO-EV)
21	1	ST	Vezeték bama 1,5mm ²	Electric cord brown	8.768.4737	L=550 (EV-EO)
22	1	ST	Vezeték kék 1,5mm ²	Electric cord blue	8.768.3170	L=100(EO-EV)
23	1	ST	Vezeték zöld 1,5mm ²	Electric cord blue	8.768.3696	L=552(EO-EV)
24	1	ST	Vezeték zöld-sárga 1,5mm ²	Electric cord green-yellow	8.768.2885	L=100(EO-EV)
25	1	ST	Vezeték zöld-sárga 1,5mm ²	Electric cord green-yellow	3.768.2634	L=100(EO-EO)
26	1	ST	Vezeték zöld-sárga 1,5mm ²	Electric cord green-yellow	8.768.3684	L=552(EO-EV)

A belső vezetékvezés komponensei. / Components of internal wiring.

Load rating:
240 Vac, 50–60 Hz
Input: 1x 16 A
Output: 10 A (Sheet F), 16 A (GST18i)

Approvals/certificates:
– CE marking according to: LVD (low voltage directive), RoHS (restriction of hazardous substances)

Power cord:
Type: –
Length: –
Plug: GST18i



General tolerances		Finish		Material	Sheet
ISO 2768–m					1/1
Drawn	17.09.2004	Date	Name	Description	
Checked	17.09.2004		Szabó	DIS–EEC GX–16A 6N RF	
Approved					
Drawing no.				Scale	
				03.612.206.1	
Gross weight		Net weight		External dimensions of packing box	
0,80 kg		0,63 kg		480x60x80 mm	

Material/Finish:
Chassis: closed sheet steel extrusion, zincplated, powder-coated texture
Plastic parts: Vampamid 6 0024 VO (UL94) or similar, recyclable
Internal conduction: brass conductor rails and copper wires
Internal copper wires: H07V–K 1,5mm²

Color:
Chassis: RAL7035 light grey
Plastic parts: RAL7021 black grey

Packaging:
Packing box (csomagolódoboz)
Supply schedule:
Socket strip (1 piece)
Mounting bracket (2 pieces) 3.768.2608
User manual (1 piece) 03.300.999.1

Rev.	Change	Date	Name
B	18229	05.10.17	Gali

knürr

Knürr GmbH Mariakirchener Straße 38
D–94424 Arnstorf Tel: +49 (0) 87 23–27–0

Platine: File:

Weitergabe sowie Vervielfältigung dieser Unterlage, Verwertung und Mitteilung ihres Inhalts nicht gestattet, soweit nicht ausdrücklich zugestanden. Alle Rechte vorbehalten.