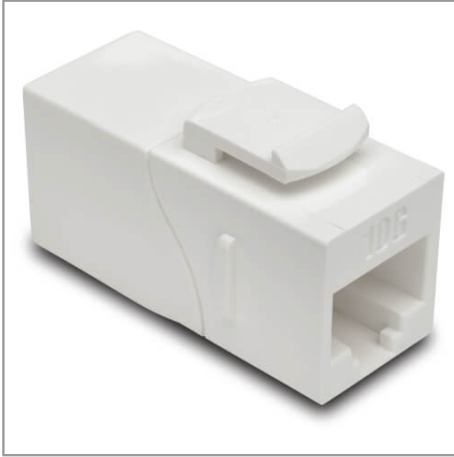


## Cat6a Straight-Through Modular In-Line Snap-In Coupler with 90-Degree Down-Angled Port, White (RJ45 F/F)

MODEL NUMBER: **N235-001-WH-6AD**



White coupler with 90° angled port connects 2 Cat6a cables to provide feed-through patching with standard data wallplates. Ideal for premise wiring, telecommunications, data networking and Ethernet connections.

### Description

Strengthen your high-speed network with the N235-001-WH-6AD Cat6a Straight-Through Modular In-Line Snap-In Coupler (F/F). This white coupler connects two Cat6a patch cords to create one longer cable. Its keystone design is perfect for convenient feed-through patching when used with a standard data wallplate (such as N042-001-WH). One RJ45 port is angled down at a 90-degree angle for easy installation in hard-to-reach spaces. Built for ultra-fast performance, this is an ideal coupler when setting up premise wiring, telecommunications, data networking and Ethernet connections.

Compatible with all Cat6a cables, the N235-001-WH-6AD's durable scratch-resistant polycarbonate housing is colored white to blend into any color scheme. This coupler features straight-through wiring and 50-pin gold-plated contacts designed to resist corrosion. The N235-001-WH-6AD is UL-listed and meets all requirements for EIA/TIA Category 6A compliance. It's also backward compatible with Cat6, Cat5e and Cat5 LANs.

### Features

#### Strengthens Your High-Speed Network

- Ideal for premise wiring, telecommunications, data networking and Ethernet connections
- Connects 2 Cat6a patch cables for a longer cable run
- Keystone design for easy snap-in installation in standard data wallplates (such as N042-001-WH)
- Compatible with all Cat6a cables
- Backward compatible with Cat6, Cat5e and Cat5 LANs

#### Superior Construction for Superior Performance

- 90° down-angled RJ45 port for easy installation in hard-to-reach spaces
- 50-pin gold-plated contacts resist corrosion and improve conduction
- Features straight-through wiring
- Durable scratch-resistant polycarbonate housing
- White coloring blends into any color scheme

### Highlights

- 90° down-angled RJ45 port for easy installation in tight spaces
- 50-pin gold-plated contacts on RJ45 jacks
- Keystone design for use with standard data wallplate
- Compatible with all Cat6a cables
- Backward compatible with Cat6, Cat5e and Cat5 LANs

### Package Includes

- N235-001-WH-6AD Cat6a Straight-Through Modular In-Line Snap-In Coupler, White (RJ45 F/F)



Powering Business Worldwide



- UL-listed
- Meets all EIA/TIA Category 6A requirements

**TAA-Compliant**

- Compliant with the Federal Trade Agreements Act (TAA) for GSA Schedule purchases

## Specifications

OVERVIEW	
UPC Code	037332197184
Product Type	RJ45 Coupler
Technology	Cat6a
PHYSICAL	
Color	White
Connector Color	White
Cable Length (ft.)	0
Cable Length (m)	0.00
Housing Color	White
Shipping Dimensions (hwd / in.)	5.00 x 4.00 x 0.50
Shipping Dimensions (hwd / cm)	12.70 x 10.16 x 1.27
Shipping Weight (lbs.)	0.02
Shipping Weight (kg)	0.01
Unit Dimensions (hwd / in.)	0.000 x 0.000 x 0.000
ENVIRONMENTAL	
Operating Temperature Range	14° to 140°F (-10° to 60°C)
Storage Temperature Range	-40° to 154°F (-40° to 68°C)
Relative Humidity	10% to 90% RH, Non-Condensing
CONNECTIONS	
Side A - Connector 1	RJ45 (FEMALE)
Side B - Connector 1	RJ45 (FEMALE)
STANDARDS & COMPLIANCE	
Product Compliance	Trade Agreements Act (TAA)
WARRANTY & SUPPORT	



Powering Business Worldwide



Product Warranty Period (Worldwide)	Lifetime limited warranty
--	---------------------------

1000 Eaton Boulevard  
Cleveland, OH 44122  
United States  
<https://tripplite.eaton.com>

© 2024 Eaton. All Rights Reserved.  
Eaton is a registered trademark. All other trademarks  
are the property of their respective owners.