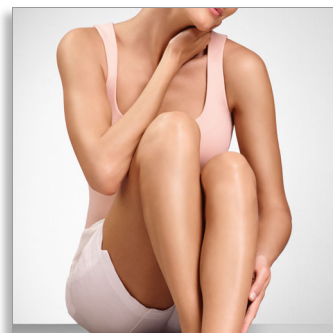




Philips
Touch-up pen trimmer

Body, Face
Smart tweezers



HP6395/00



Smooth skin on the go

Body & Face trimmer for instant touch-ups

Stay smooth. Whenever, wherever. The on-the-go trimmer from Philips is a discrete beauty tool that makes it quick and easy to remove even the finest body and facial hairs on the go. It comes with luxury smart tweezers with light and mirror.

Quick and easy hair removal

- 26mm trimming head for easy removal of body hairs
- 8mm trimming head for easy removal of hairs on the face

Eyebrow shaping

- 2&4 mm eyebrow comb to uniform hair length
- Luxury smart tweezers with light and mirror

Use on the go

- Small enough to take everywhere

Convenient

- Cleaning brush included so you can keep the trimmer hygienic
- Accessories pouch for extra convenience

PHILIPS

Highlights

Touch-up body attachment



The body application trimming head is ideal for quick touch-ups on-the-go. The 26mm trimming head ensures quick and easy use on small body areas (e.g. toes, knee).

Precise face attachment



The face application trimming head is great for quick touch-ups on-the-go. The 8mm trimming head ensures a quick and precise application on any facial area.

Eyebrow shaper



With 2 length options, 2mm and 4mm, to trim hair to the precise length you want. Simply attach the

comb onto the trimming head to achieve a precise and uniformed result.

Compact and portable



Small enough to fit in a handbag or clutch and battery powered, so you can take it anywhere you go. AAA battery included.

Luxury smart tweezers



Tweezers in an elegant case, with integrated light and mirror, ideal for eyebrows.

Cleaning brush

Quickly clean the trimmer and keep it hygienic with the cleaning brush included.

Accessories pouch

Attractive pouch so you can store everything in one place.

Specifications

Features

- Body version trimming unit: 24 mm
- Facial version trimming unit: 8 mm

Accessories

- Luxury smart tweezers
- Eyebrow comb
- Cleaning brush
- Protection cap
- Accessories pouch

Technical specifications

- Color(s): Ceramic Pearl White
- Power source: 1 x AAA-type alkaline battery (included)
- Voltage: 1.5V DC

Dimensions F-box

- Dimensions: 80 x 40 x 175mm

Service

- 2-year guarantee



Issue date 2016-04-09

Version: 1.1.1

© 2016 Koninklijke Philips N.V.
All Rights reserved.

Specifications are subject to change without notice.
Trademarks are the property of Koninklijke Philips N.V.
or their respective owners.

www.philips.com