



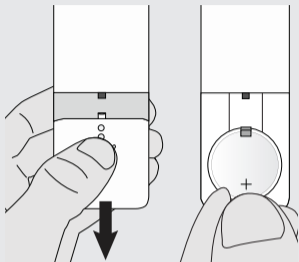
**USER MANUAL  
MULTI LANGUAGE**



Item 71115 Version 1.0  
Visit [www.trust.com](http://www.trust.com)  
for the latest instructions

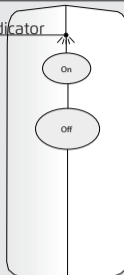
**ALKCT-2000 ARM/DISARM REMOTE CONTROL**

1

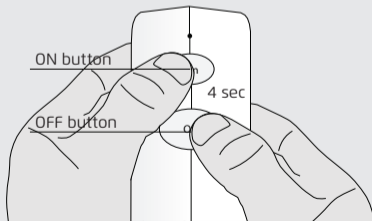


2

Red LED indicator

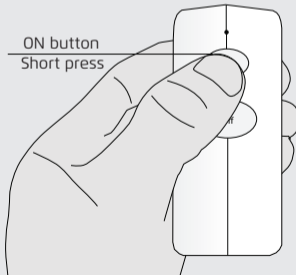


3

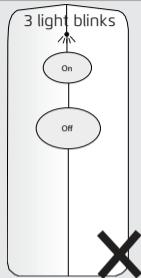
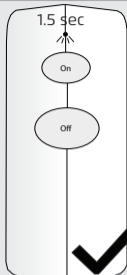
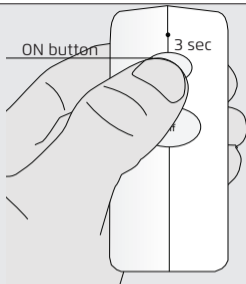


4

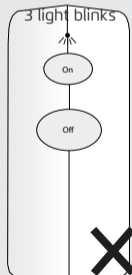
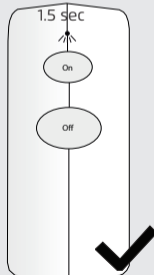
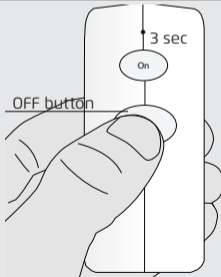
ON button  
Short press



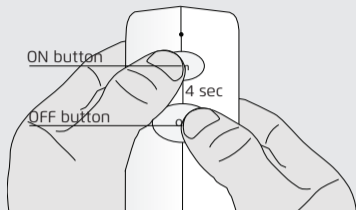
5



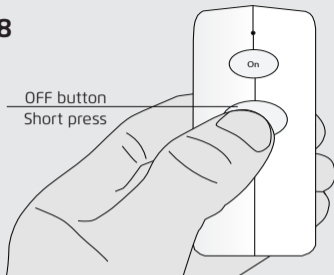
6



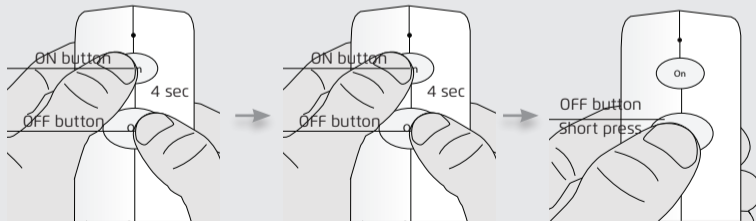
7



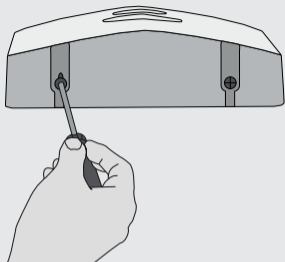
8



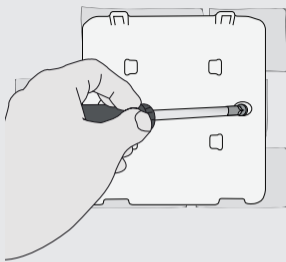
9



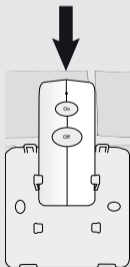
10



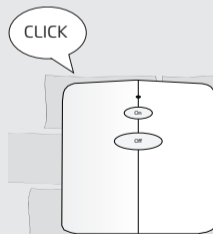
11



12



13



### **1. Place battery**

Open the battery slot at the back of the ALKCT by sliding it down. Place the included 3V CR2477 battery and close the battery slot. For more information on replacing and purchasing new batteries visit [trust.com/71115](http://trust.com/71115)

### **2. LED indicator**

Low battery: LED will blink 2x when a button is pushed

Confirm pair/unpair: LED will blink 5x

Successful arm/disarm: LED will light for 1.5 sec

Unsuccessful arm/disarm: LED will blink shortly 3x

### **3. Activate the pairing mode**

Consult the manual of the Siren to activate the pairing mode. Put the ALKCT in pairing mode by first pressing the ON and OFF button simultaneously for 4 sec (until the LED of the ALKCT starts blinking).

### **4. Confirm pairing**

After entering pairing mode press the ON button shortly to pair with the Siren. The LED indicator of the Siren and ALKCT will be flashing 5 times to confirm that the pairing has been done successfully.

### **5. Arm the siren**

To arm the siren press the ON button for 3 seconds on the ALKCT.

If the siren is armed successfully the LED of the ALKCT will light up for 1.5 sec.

If the siren is armed unsuccessfully the LED of the ALKCT will give 3 short light blinks.

Check the following points if the siren is armed unsuccessfully:

- Is the siren within range
- Are siren batteries low
- Are the remote batteries low
- Is another wireless device nearby

## 6. Disarm the siren

To disarm the siren press the OFF button for 3 seconds on the ALKCT.

If the siren is disarmed successfully the LED of the ALKCT will light up for 1.5 sec.

If the siren is disarmed unsuccessfully the LED of the ALKCT will give 3 short light blinks.

Check the following points if the siren is disarmed unsuccessfully:

- Is the siren within range
- Are siren batteries low
- Are the remote batteries low
- Is another wireless device nearby

## 7. Activating the unpairing mode

Consult the manual of the Siren to activate the pairing mode. Put the ALKCT in pairing mode by first pressing the ON and OFF button simultaneously for 4 sec (until the LED of the ALKCT starts blinking).

## 8. Confirm unpairing

After entering pairing mode press the OFF button shortly to unpair with the Siren. The LED indicator of the Siren and ALKCT will be flashing 5 times to confirm that the unpairing has been done successfully.

## 9. Delete ALKCT memory

To delete the memory of the ALKCT press the ON and OFF button simultaneously for 4 seconds (until the LED starts to blink) Release the buttons and press the ON and OFF buttons simultaneously again for 4 seconds. (until the LED starts to blink fast). Press the OFF button shortly to delete the memory of the ALKCT. The LED will blink 5x to confirm the memory has been deleted.

## 10. Opening ALKCT casing (Optional, available on [trust.com](https://trust.com))

Open the casing by untightening the screws on the bottom of the case. The backplate can be pulled off by lifting the screws.

### **11. Mounting the casing**

Mount the casing of the ALKCT on a flat surface and secure it with screws. (Mounting screws not included)

### **12. Place ALKCT in casing**

When the casing has been mounted and secured with screws place the ALKCT in the casing. To place the ALKCT slide it in from top to bottom.

### **13. Close the casing**

To close the casing put the frontplate on the backplate and push down till you hear a click. This means the front plate has been locked on the backplate. Secure it with screwing the previously untightened screws back on the bottom of the casing.













































## **1. Podłącz lampę/urządzenie i umieść odbiornik**

Najpierw sprawdź, czy lampa lub urządzenie jest włączone. Następnie podłącz lampę lub urządzenie do odbiornika i włącz odbiornik do gniazda zasilania. Nie należy przekraczać maksymalnego obciążenia: 1000 W.



















## **1. Свържете лампата/устройството и сложете приемателя**

Първо проверете дали лампата или устройството е включено. След това включете щепсела на лампата или устройството в приемателя и включете приемателя в контакт. Не надвишавайте максималната мощност: 1000 W.



























