



LCD monitor with PowerSensor

- B Line
- 24 (23.8" / 60.5 cm diag.)
- Full HD (1920 x 1080)

241B7QPJKEB/00

## Crisp views, efficient performance

with PowerSensor

The Philips PowerSensor display using 85% post consumer recycled plastics and PVC, BFR free housing is ideal for eco-friendly productivity

### Benefits

#### Brilliant performance

- IPS technology for full colors and wide viewing angles
- Narrow border display for a seamless appearance
- SmartImage presets for easy optimized image settings

#### Designed for comfortable productivity

- LowBlue Mode for easy on-the-eyes productivity
- Less eye fatigue with Flicker-free technology
- SmartErgoBase enables people-friendly ergonomic adjustments

#### Features for the way you work

- Webcam pops up when you need it; secures down when you don't
- Built-in stereo speakers for multimedia
- USB 3.0 enables fast data transfers and smart phone charging
- SmartConnect with DisplayPort, HDMI and VGA connections

#### Sustainable Eco-design

- PowerSensor saves up to 80% energy costs

# PHILIPS

## Features

### IPS technology



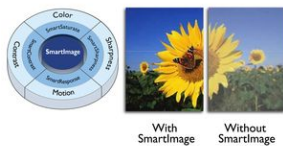
IPS displays use an advanced technology which gives you extra wide viewing angles of 178/178 degree, making it possible to view the display from almost any angle - even in 90 degree Pivot mode! Unlike standard TN panels, IPS displays gives you remarkably crisp images with vivid colors, making it ideal not only for Photos, movies and web browsing, but also for professional applications which demand color accuracy and consistent brightness at all times.

### UltraNarrow Border



The new Philips displays feature ultra-narrow borders which allow for minimal distractions and maximum viewing size. Especially suited for multi-display or tiling setup like gaming, graphic design and professional applications, the ultra-narrow border display gives you the feeling of using one large display.

### SmartImage



SmartImage is an exclusive leading edge Philips technology that analyzes the content displayed on your screen and gives you optimized display performance. This user friendly interface allows you to select various modes like Office, Photo, Movie, Game, Economy etc., to fit the application in use. Based on the selection, SmartImage dynamically optimizes the contrast, color saturation and sharpness of images and videos for ultimate display performance. The Economy mode option offers you major power savings. All in real time with the press of a single button!

### LowBlue Mode



Studies have shown that just as ultra-violet rays can cause eye damage, shortwave length blue light rays from LED displays can cause eye damage and affect vision over time. Developed for wellbeing, Philips LowBlue Mode setting uses a smart software technology to reduce harmful shortwave blue light.

### Flicker-free technology



Due to the way brightness is controlled on LED-backlit screens, some users experience flicker on their screen which causes eye fatigue. Philips Flicker-free Technology applies a new solution to regulate brightness and reduce flicker for more comfortable viewing.

### SmartErgoBase



The SmartErgoBase is a monitor base that delivers ergonomic display comfort and provides cable management. The base's people-friendly height, swivel, tilt and rotation angle adjustments position the monitor for maximum comfort that can ease the physical strains of a long workday; cable management reduces cable clutter and keeps the workspace neat and professional.

### Pop-up webcam



Webcams are great for connecting with others and collaborating on that important project. Sometimes, though, you don't want a webcam looking down on your desk. Our ingenious new pop-up webcam design pops up when it's time for meetings and for security tucks away nicely when you are not using it.

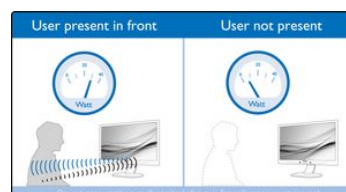
### Built-in stereo speakers

A pair of high quality stereo speakers built into a display device. It can be visible front firing, or invisible down firing, top firing, rear firing, etc depending on model and design.

### SmartConnect

With a plethora of connectivity, these Philips displays come equipped with multi connections like VGA, Display Port, universal HDMI connector, enabling you to enjoy high resolution uncompressed video and audio content. USB connections ensures that you can have super speed data transfers while having global connectivity. Regardless of what source you use, you can rest assured that this Philips display will ensure your investment is not made obsolete any time soon!

### PowerSensor



PowerSensor is a built-in 'people sensor' that transmits and receives harmless infrared signals to determine if user is present and automatically reduces

monitor brightness when user steps away from the desk, cutting energy costs by up to 80 percent and prolonging monitor life

## Specifications

Please note that this is a pre-sales leaflet. The contents of this leaflet reflect the best of our knowledge per date and country mentioned above. The contents of this leaflet are subject to change without notice. Philips does not accept any liability as to the contents of this leaflet.

### Picture/Display

LCD panel type	IPS technology
Backlight type	W-LED system
Panel Size	23.8 inch / 60.5 cm
Effective viewing area	527 (H) x 296.5 (V)
Aspect ratio	16:9
Optimum resolution	1920 x 1080 @ 60Hz
Response time (typical)	5 ms (Gray to Gray)*
Brightness	250 cd/m <sup>2</sup>
Contrast ratio (typical)	1,000:1
SmartContrast	20,000,000 :1
Pixel pitch	0.275 x 0.275 mm
Viewing angle	178° (H) / 178° (V) @ C/R > 10
Flicker-free	Yes
Picture enhancement	SmartImage
Display colors	16.7 M
Scanning Frequency	30 - 83 kHz (H) / 56 - 76 Hz (V)
sRGB	Yes

### Connectivity

Signal Input	VGA (Analog ) DisplayPort 1.2 HDMI 1.4
USB	USB 3.0x3 (1 w/fast charging)*
Sync Input	Separate Sync Sync on Green
Audio (In/Out)	PC audio-in Headphone out

### Convenience

Built-in Speakers	2 W x 2
Built-in webcam	2.0 megapixel FHD camera with microphone and LED indicator
User convenience	SmartImage Input PowerSensor Menu Power On/Off Low Blue Mode
Control software	SmartControl
OSD Languages	Brazil Portuguese Czech Dutch English Finnish French German Greek Hungarian Italian Japanese Korean Polish Portuguese Russian Simplified Chinese Spanish Swedish Traditional Chinese Turkish Ukrainian
Other convenience	Kensington lock VESA mount (100x100mm)
Plug & Play Compatibility	DDC/CI Mac OS X sRGB Windows 10 / 8.1 / 8 / 7

### Stand

Height adjustment	130 mm
Pivot	90 degree
Swivel	-175/+175 degree
Tilt	-5/20 degree

### Power

ECO mode	10.3 W (typ.)
On mode	15.4 W (typ.) (EnergyStar 7.0 test method)
Standby mode	<0.3 W (typ.)
Off mode	Zero watts with AC switch
Power LED indicator	Operation - White Standby mode- White (blinking)
Power supply	Built-in 100-240VAC, 50-60Hz

### Dimensions

Product with stand(max height)	541 x 492 x 257 mm
Product without stand (mm)	541 x 332 x 57 mm
Packaging in mm (WxHxD)	603 x 492 x 187 mm

### Weight

Product with stand (kg)	5.83 kg
Product without stand (kg)	3.52 kg
Product with packaging (kg)	6.45 kg

### Operating conditions

Temperature range (operation)	0°C to 40°C °C
Temperature range (storage)	-20°C to 60°C °C
Relative humidity	20%-80 %
Altitude	Operation: +12,000ft (3,658m), Non-operation: +40,000ft (12,192m)
MTBF (demonstrated)	70,000 hrs (excluded backlight)

### Sustainability

Environmental and energy	PowerSensor EnergyStar 7.0 EPEAT Gold* TCO edge RoHS
Recyclable packaging material	100 %
Post consumer recycled plastic	85%
Specific Substances	PVC / BFR free housing Mercury free Lead free

### Compliance and standards

Regulatory Approvals	CE Mark FCC Class B SEMKO cETLus CU-EAC TCO edge TUV Ergo
----------------------	---

	TUV/GS EPA WEEE ICES-003 UKRAINIAN	Finish	Texture
Cabinet		What's in the box?	
Front bezel	Black	Monitor with stand	Yes
Rear cover	Black	Cables	D-Sub cable, DP cable, USB cable, Audio cable, Power cable
Foot	Black	User Documentation	Yes

- \* "IPS" word mark / trademark and related patents on technologies belong to their respective owners.
- \* EPEAT Gold or Silver is valid only where Philips registers the product. Please visit [www.epeat.net](http://www.epeat.net) for registration status in your country.
- \* Fast charging complies with USB BC 1.2 standard
- \* Response time value equal to SmartResponse



data subject to change  
2018, October 21  
Version: 4.0.1  
EAN: 8712581740559

© 2018 Koninklijke Philips N.V.  
All rights reserved.

Specifications are subject to change without notice. Trademarks are the property of Koninklijke Philips N.V. or their respective owners.

[www.philips.com](http://www.philips.com)