

Printer Driver

Setup Guide

This guide describes how to set up the Printer Driver for Windows 7, Windows Vista, Windows XP, and Windows 2000.

Before Using this Software

Before using the printer driver, be sure to read the “Readme” file.

UP-DR80MD

The screens used to describe setup in this guide assume that the UP-DR80MD printer is connected to a computer running Windows Vista.

Configuring the Printer

Before you begin printing from applications, open the printer settings screen and configure the settings.

You can open the printer settings screen using one of the following methods.

- On the [Start] menu, select [Control Panel] and then [Printer] ([Start] menu, then [Devices and Printers] for Windows 7; [Start] menu, then [Printers and Faxes] for Windows XP; [Start] menu, [Settings], then [Printers] for Windows 2000). Select the printer icon for the Sony UP-DR80MD, and then select [Select printing preferences] from the command bar ([Printing preferences] by right-clicking the printer icon for Windows 7; [Printing Preferences] from the [File] menu for Windows XP and Windows 2000). The settings that you make here are used as default settings when printing from applications.
- On the [File] menu of your application, click the command used to make printer settings. The settings made this way only remain valid until you close the application.

This guide describes the tabs that appear in the UP-DR80MD settings screen.

[Paper] tab

Basic print related settings.

[Graphics] tab

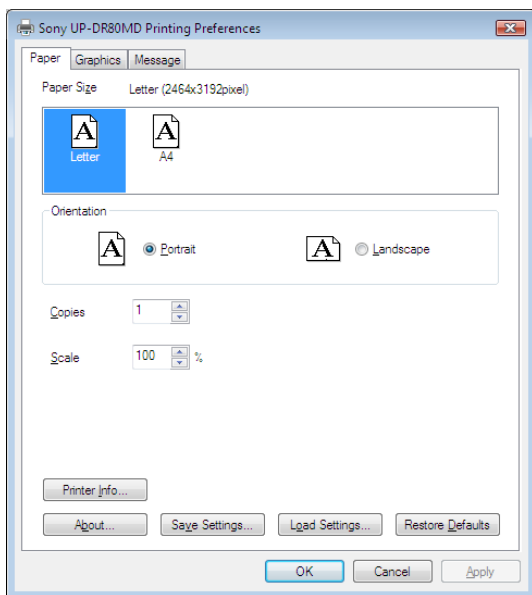
Used for setting gray, lightness, and other settings related to image quality.

[Message] tab

Used for configuring settings related to message dialog boxes.

[Paper] tab settings

Configure basic print-related settings.



Paper Size

The paper size that can be used with this printer and the maximum print size are as follows.

Paper size	Maximum print size
Letter	2,464 × 3,192 pixels
A4	2,392 × 3,400 pixels

Orientation

Select either [Portrait] or [Landscape] as the print direction.

Copies

You can set this between 1 and 10.

Scale

Specifies the scale of prints. You can set the scale between 25 and 400%.

Printer Info

Displays information related to the printer currently connected.

Save Settings

Saves all print setting configurations to a file.

Load Settings

Loads stored setting configurations from a file.

About

Displays the version information of this printer driver.

Restore Defaults

Restores all settings in the [Paper] tab to their default condition.

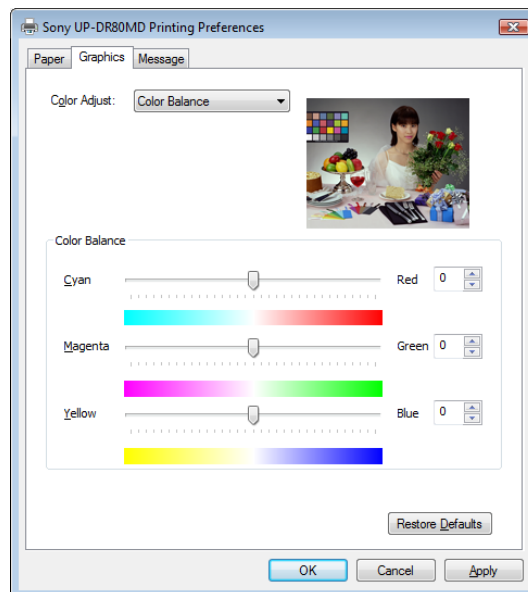
[Graphics] tab settings

Select [Color Balance], [Lightness], [Color Correction], or [Gray Balance] in the [Color Adjust] list to change these settings.

Color Balance

Adjusts the color balance. Adjust the setting by moving the slider left or right. You can also make adjustments by typing values in the box on the right.

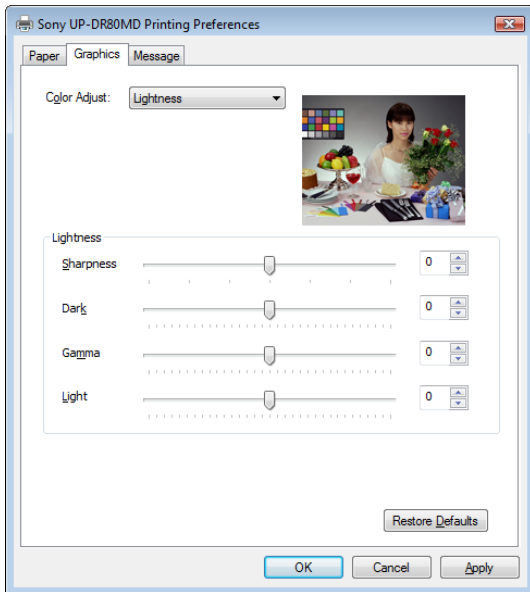
The effects of adjustments are reflected in the preview image at the top right.



Lightness

Adjusts lightness. Adjust the setting by moving the slider left or right. You can also make adjustments by typing values in the box on the right.

The effects of adjustments are reflected in the preview image at the top right. However, the effects of sharpness adjustments are not reflected.



Sharpness

Adjusts the sharpness of image outlines. The outlines of images become sharper as the setting is increased.

Dark

Adjusts the scale of the dark tones.

Gamma

Adjusts the scale of medium tones.

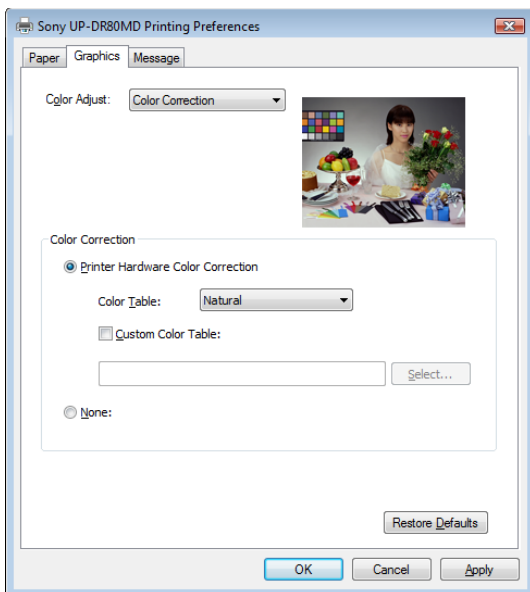
Light

Adjusts the scale of light tones.

Color Correction

Select the color correction method.

The effects of these settings are not reflected in the preview image at the top right.



Printer Hardware Color Correction

The printer corrects color.

None

No printer hardware color correction is performed.

Color Table

Selects the printer's internal color table.

Natural: Performs correction that is suited for sRGB-compliant images.

CG: Performs correction that is suited for CG images.

Custom Color Table

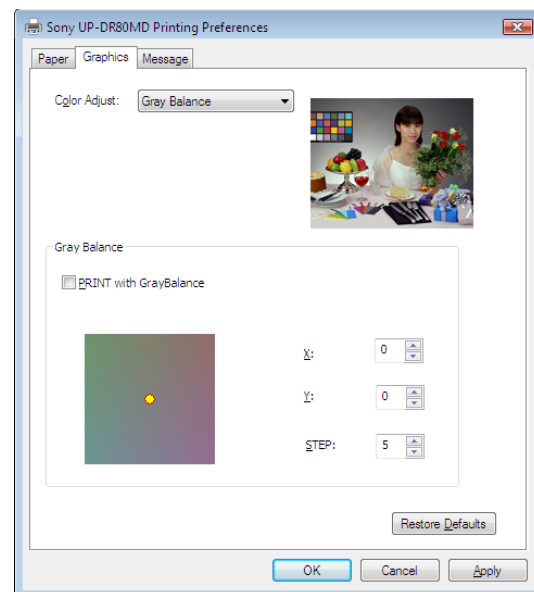
Select when using a color table other than the printer's internal color table.

Gray Balance

Use this tab to adjust the hue of a printed image so that it matches its hue on the monitor.

Also, when you install a new ink ribbon and load paper, you can adjust the gray balance to correct any unevenness between the pair.

The effects of adjustments are reflected in the preview image at the top right.



PRINT with GrayBalance

When you select this check box, a gray balance print is created for the print data.

X, Y

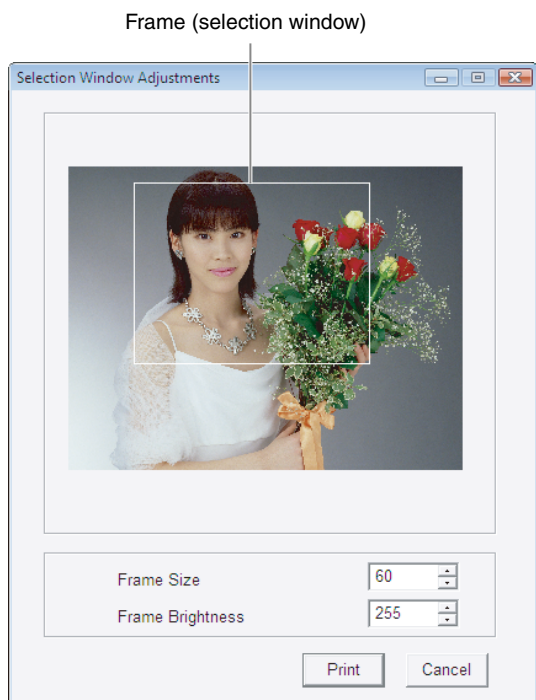
Adjust the gray balance by setting the X and Y coordinates for the gray balance chart at the bottom left. The default for both settings is 0, and the gray balance is not adjusted under this setting.

The effects of adjustments are reflected in the preview image at the top right.

STEP

Specify the incremental amount of change in gray balance for gray balance prints. The default setting is 5. Set a lower value when making precise gray balance adjustments, and set a larger value when making broader adjustments.

To print the gray balance as a reference for adjustment, select the [PRINT with GrayBalance] check box and print. When you do so, the following dialog box will appear. Specify the area that will be used to confirm the hue by dragging the frame (selection window) in the preview image. You can adjust the size of the frame by adjusting the [Frame Size] setting. You can also change the color of the frame by adjusting the [Frame Brightness] setting.



When you click the [Print] button, the portion of the image specified by the selection window is printed using the 5 × 5 cell layout. Select the image with the best gray balance from the 25 images that are printed, and enter the X and Y coordinates (X,Y) printed under that image for the [X] and [Y] settings.

Restore Defaults

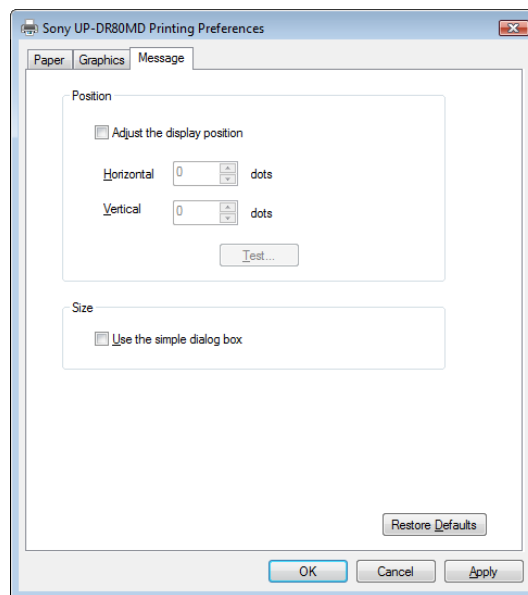
Restores all changed settings in the [Graphics] tab to their default condition.

Note

There may be some differences in image quality and coloring between the preview image and the actual printed image. This is due to differences that may exist in color production methods and display environments. The preview images should only be used as a guide.

[Message] tab settings

Select the display position of message dialog boxes.



Adjust the display position

Select this check box to adjust the display position of message dialog boxes. The message dialog box appears in the position defined by the values specified in the [Horizontal] and [Vertical] boxes.

Default setting: A check is not placed in [Adjust the display position]. (The message dialog boxes appear in the center of the display.)

Horizontal and Vertical

Defines the position of message dialog boxes, using the upper-left corner of the screen as the origin.

The message dialog box appears in the position defined by the values specified here.

Test

Click this button to display a test message dialog box in the position defined by [Horizontal] and [Vertical], which allows you to verify the accuracy of its position.

Use the simple dialog box

Select this check box to display smaller size message dialog boxes.

Restore Defaults

Restores all changed settings in the [Message] tab to their default condition.