

Micro Hi-Fi System



visit our website

www.audio.philips.com

to download latest UPDATES of USB PC Link Driver
MusicMatch Jukebox softwares and FAQs.



PHILIPS

Important notes for users in the U.K.

Mains plug

This apparatus is fitted with an approved 13 Amp plug. To change a fuse in this type of plug proceed as follows:

- 1 Remove fuse cover and fuse.
- 2 Fix new fuse which should be a BS1362 5 Amp, A.S.T.A. or BSI approved type.
- 3 Refit the fuse cover.

If the fitted plug is not suitable for your socket outlets, it should be cut off and an appropriate plug fitted in its place.

If the mains plug contains a fuse, this should have a value of 5 Amp. If a plug without a fuse is used, the fuse at the distribution board should not be greater than 5 Amp.

Note: The severed plug must be disposed of to avoid a possible shock hazard should it be inserted into a 13 Amp socket elsewhere.

How to connect a plug

The wires in the mains lead are coloured with the following code: blue = neutral (N), brown = live (L).

- As these colours may not correspond with the colour markings identifying the terminals in your plug, proceed as follows:
 - Connect the blue wire to the terminal marked N or coloured black.
 - Connect the brown wire to the terminal marked L or coloured red.
 - Do not connect either wire to the earth terminal in the plug, marked E (or \perp) or coloured green (or green and yellow).

Before replacing the plug cover, make certain that the cord grip is clamped over the sheath of the lead - not simply over the two wires.

Copyright in the U.K.

Recording and playback of material may require consent. See Copyright Act 1956 and The Performer's Protection Acts 1958 to 1972.

Italia

DICHIARAZIONE DI CONFORMITA'

Si dichiara che l'apparecchio MC-M570, Philips risponde alle prescrizioni dell'art. 2 comma 1 del D.M. 28 Agosto 1995 n. 548.

Fatto a Eindhoven

Philips Consumer Electronics
Philips, Glaslaan 2
5616 JB Eindhoven, The Netherlands

Norge

Typeskilt finnes på apparatens underside.

Observer: Nettbryteren er sekundert innkoplet. Den innebygde nettdelen er derfor ikke frakoplet nettet så lenge apparatet er tilsluttet nettkontakten.

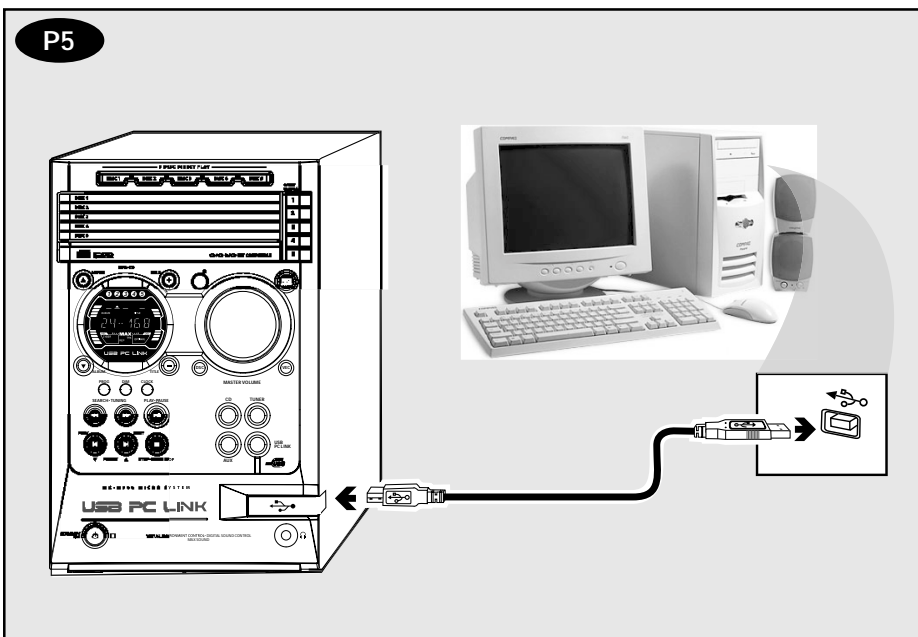
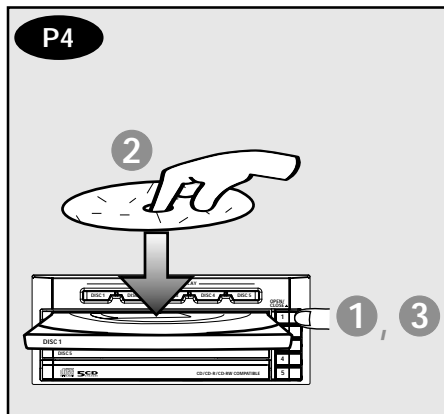
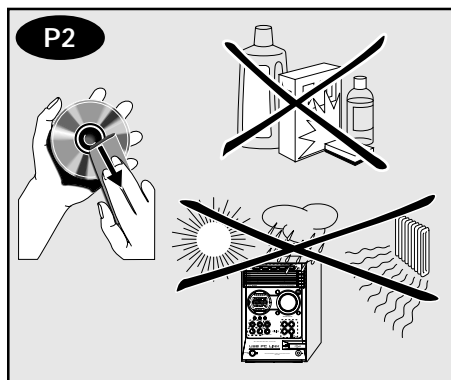
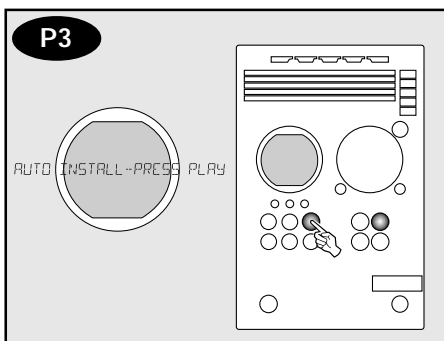
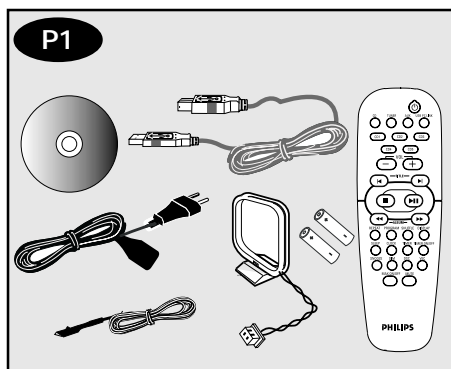
For å redusere faren for brann eller elektrisk støt, skal apparatet ikke utsettes for regn eller fuktighet.

CAUTION

Use of controls or adjustments or performance of procedures other than herein may result in hazardous radiation exposure or other unsafe operation.

VAROITUS

Muiden kuin tässä esitettyjen toimintojen säädön tai asetusten muutto saattaa altistaa vaaralliselle säteilylle tai muille vaarallisille toiminnoille.



DK

**Advarsel: Usynlig laserstråling ved åbning
når sikkerhedsafbrydere er ude af funktion.
Undgå udsættelse for stråling.**

**Bemærk: Netafbryderen er sekundært
indkoblet og afbryder ikke strømmen fra
nettet. Den indbyggede netdel er derfor
tilsluttet til lysnettet så længe netstikket
sidder i stikkontakten.**

S

Klass 1 laseraparat

**Varning! Om apparaten används på annat
sätt än i denna bruksanvisning specificerats,
kan användaren utsättas för osynlig
laserstrålning, som överskrider gränsen för
laserklass 1.**

**Observera! Stömbrytaren är sekundärt
kopplad och bryter inte strömmen från
nätet. Den inbyggda nätdelen är därför
ansluten till elnätet så länge stickproppen
sitter i vägguttaget.**

SF

Luokan 1 laserlaite

**Varoitus! Laitteen käyttäminen muulla
kuin tässä käyttöohjeessa mainitulla tavalla
saattaa altistaa käyttäjän
turvallisuusluokan 1 ylittävälle
näkömättömälle lasersäteilylle.**

**Oikeus muutoksiin varataan. Laite ei
saa olla alttiina tippu-ja roiskevedelle.**

**Huom. Toiminnanvalitsin on kytketty
toisiopuolelle, eikä se kytke laitetta irti
sähköverkosta. Sisäänrakennettu verkko-
osa on kytkettynä sähköverkkoon aina
silloin, kun pistoke on pistorasiassa.**

Energy Star

As an ENERGY STAR®

Partner, Philips has

determined that this

product meets the ENERGY STAR®

guidelines for energy efficiency.



English -----	6
Français -----	26
Español -----	46
Deutsch -----	66
Nederlands -----	86
Italiano -----	106
Svenska -----	126
Dansk -----	146
Suomi -----	166
Português -----	186
Ελληνικά -----	206
Polski -----	228

- English
- Français
- Español
- Deutsch
- Nederlands
- Italiano
- Svenska
- Dansk
- Suomi
- Português
- Ελληνικά
- Polski

Contents

General Information

Supplied accessories	7
Environmental information	7
Care and safety information	7

Functional Overview

Main unit and remote control	8–9
Control buttons available on the remote only	9

Connections

Step 1: Connecting FM/AM antennas	10
Step 2: Connecting the speakers	11
Step 3: Connecting to PC	11
Step 4: Connecting the AC power cord	11
Step 5: Inserting batteries into the remote control	11
Using the remote control to operate the system	11

USB PC Link

Quick Setup Guide	12
PC system requirement	12
Install MusicMatch software	12
Enable digital CD audio output	13
Connecting USB PC Link	13

Basic Operations

Switching on/off	14
Switching to active mode	14
Switching to Eco Power standby mode	14
Switching to standby mode (view clock)	14
Demonstration mode	14
Setting the clock	14
Selecting different display mode	15
Dim mode	15
Clock display mode	15
Volume control	15
Sound control	15
MAX sound	15
Digital Sound Control	15
Virtual Environment Control	15

Disc Operations

Playable discs	16
Loading discs	16
Basic playback controls	16
Playing an MP3 disc	17
Repeat and Shuffle	17
Repeat play	17
Random play	17
Programming the disc tracks	18
Checking the programme	18
Clearing the programme	18

Tuner Operations

Tuning to radio stations	19
Presetting radio stations	19
Using the Plug and Play	19
Automatic presetting	19
Manual presetting	19
Selecting a preset radio station	20
Deleting a preset radio station	20
RDS	20
Scrolling through RDS information	20
Setting the RDS clock	20
NEWS	21
Switching on NEWS function	21

Timer Operations

Timer setting	22
Activating/Deactivating the timer	22
Checking the timer setting	22
Temporarily deactivating the wake up timer	23
Sleep timer setting	23

Other Connection

Listening to an external source	23
---------------------------------------	----

Specifications

.....	24
-------	----

Troubleshooting

.....	25
-------	----

This product complies with the radio interference requirements of the European Community.

Refer to the type plate on the rear or bottom of the system for identification and supply ratings.

For users in the U.K.: please follow the instructions on page 2.

Supplied accessories (page 3 – P1)

- USB PC LINK software installer CD-ROM
- USB cable
- Remote control and two AA batteries.
- AM loop antenna
- FM wire antenna
- AC power cord

Environmental information

All unnecessary packaging has been omitted. We have tried to make the packaging easy to separate into three materials: cardboard (box), polystyrene foam (buffer) and polyethylene (bags, protective foam sheet).

Your system consists of materials which can be recycled and reused if disassembled by a specialised company. Please observe the local regulations regarding the disposal of packaging materials, exhausted batteries and old equipment.

Care and safety information

(page 3 – P2)

Avoid high temperatures, moisture, water and dust

- Do not expose the system, batteries or discs to humidity, rain, sand or excessive heat (caused by heating equipment or direct sunlight). Always keep the disc tray closed to avoid dust on the lens.

Avoid condensation problem

- The lens may cloud over when the system is suddenly moved from cold to warm surroundings, making it impossible to play a disc. Leave the system in the warm environment until the moisture evaporates.

Do not block the vents

- In a cabinet, allows about 10cm (4 inches) of free space all around the system for adequate ventilation.

Care of disc

- To clean a CD, wipe it in a straight line from the centre towards the edge using a soft, lint-free cloth. A cleaning agent may damage the disc!
- Write only on the printed side of a CDR(W) and only with a soft felt-tipped pen.
- Handle the disc by its edge, do not touch the surface.

Care of the cabinet

- Use a soft cloth slightly moistened with a mild detergent solution. Do not use a solution containing alcohol, spirits, ammonia or abrasives.

Finding a suitable location

- Place the system on a flat, hard, and stable surface.

Built-in safety circuit

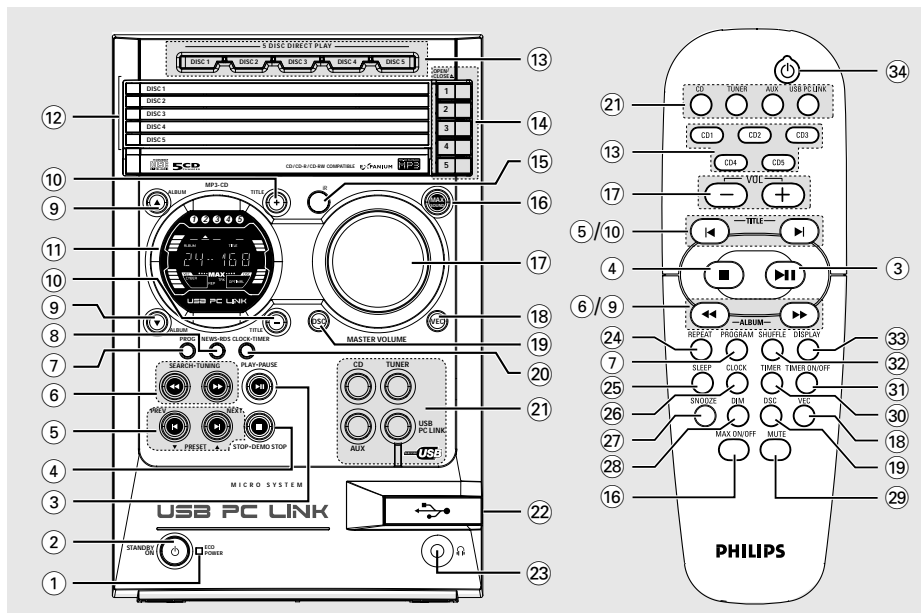
- Under extreme conditions, this system may switch to standby mode automatically. If this happens, let the system cool down before reusing it.

Power saving

- This system is designed to use less than 1W of electricity when switches to Eco Power standby. Disconnect the AC power cord from the power outlet when not in use.

Functional Overview

English



Main unit and remote control

① ECO POWER indicator

- Lights up when the system is in Eco Power standby mode.

② STANDBY ON

- Switches to Eco Power standby mode or turns on the system.
- *Switches to standby mode.

③ PLAY-PAUSE

- CD: starts/pauses playback.
- USB PC LINK: starts/pauses playback.
(only on the main unit)
- TUNER: *enters Plug & Play mode and/or starts preset radio station installation.

④ STOP-DEMO STOP

- Exits an operation.
- CD: stops playback or clears a programme.
- TUNER: *erases a preset radio station.
- USB PC LINK: stops playback.
(only on the main unit)
- *Turns on/off the demonstration mode.

⑤ PREV / NEXT (▼ PRESET ▲)

- CD: selects a track.
- TUNER: selects a preset radio station.
- CLOCK: sets the minutes.
- USB PC LINK: selects a track from the playlist.

⑥ SEARCH-TUNING

- CD: *searches backward/forward or selects an album from MP3 disc.
- TUNER: tunes the radio frequency up/down.
- CLOCK: sets the hours.
- USB PC LINK: *searches backward/forward.

⑦ PROG (PROGRAM)

- CD: starts or confirms tracks programming.
- TUNER: starts *automatic/manual preset programming.
- CLOCK: selects 12- or 24-hour clock display.

⑧ NEWS-RDS

- In tuner mode, selects RDS information.
- In other modes, turns on/off news.

⑨ ALBUM ▼ ▲ ()

- Selects an MP3 album.

* = Press and hold the button for more than two seconds.

⑩ TITLE + - (⏮ ⏭)

- Selects an MP3 title/track.

⑪ Display screen

⑫ Disc trays (1~5)

⑬ 5 DISC DIRECT PLAY 1~5 (CD 1~5)

- Selects a disc tray to playback.

⑭ OPEN/CLOSE ▲ 1~5

- Opens/closes the individual disc tray.

⑮ iR

- Point the remote control towards this sensor.

⑯ MAX SOUND (MAX ON/OFF)

- Turns on/off the optimal mix of various sound features.

⑰ MASTER VOLUME (VOL + -)

- Adjusts the volume level.

⑱ VEC

- Selects different type of environment-based equaliser settings (HALL, CINEMA, CONCERT or CYBER).

⑲ DSC

- Selects different type of preset sound equaliser settings (OPTIMAL, JAZZ, ROCK or POP).

⑳ CLOCK•TIMER

- *Enters clock or timer setting mode.
- Switches to clock display mode.

㉑ CD / TUNER / AUX / USB PC LINK

- Selects the relevant active mode.
- CD: toggles between DISC 1~5.
- TUNER: toggles between FM and MW band.
- AUX: toggles between AUX and CDR mode.

㉒ Connect the USB cable between the system and PC's USB port.

㉓

- Plug in the headphones jack. The speakers output will be cancelled.

Control buttons available on the remote only

㉔ REPEAT

- Repeats a track/disc/all programmed tracks.

㉕ SLEEP

- Sets the sleep timer function.

㉖ CLOCK

- *Enters clock setting mode.
- Switches to clock display mode.

㉗ SNOOZE

- Temporarily deactivate the wake up timer.

㉘ DIM

- Selects different levels of brightness for display panel.

㉙ MUTE

- Mutes or restores the volume.

㉚ TIMER

- *Enters timer setting mode.
- Displays the timer setting.

㉛ TIMER ON/OFF

- Turns on/off timer function.

㉜ SHUFFLE

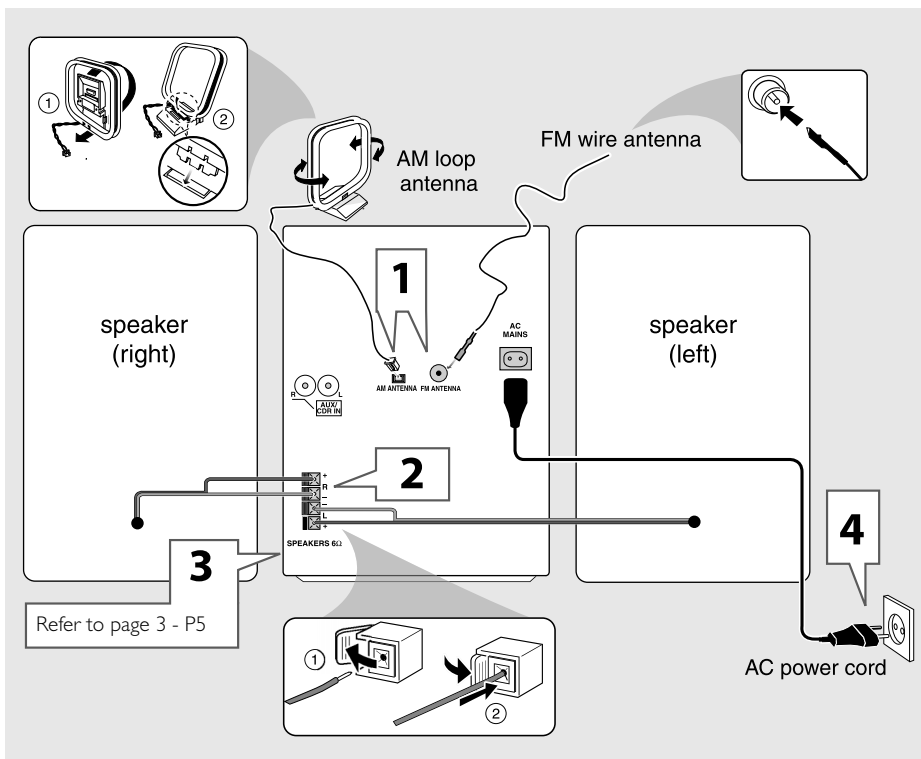
- Turns on/off random play mode.

㉝ DISPLAY

- Displays the album and title name for MP3 disc.

㉞

- Switches to Eco Power standby mode.
- *Switches to standby mode.



WARNING!

- Use only the supplied speakers. The combination of the main unit and speakers provide the best sound. Using other speakers can damage the unit and sound quality will be negatively affected.
- Never make or change connections with the power switched on.
- Connect the AC power cord to the power outlet only after you have finished hooking up everything.

Step 1: Connecting FM/AM antennas

- Place the AM loop antenna on a shelf or attach it to a stand or wall.
- Extend the FM antenna and fix its ends to the wall.
- Adjust the position of the antennas for optimal reception.
- Position the antennas as far as possible from a TV, VCR or other radiation source to prevent unwanted noise.
- For better FM stereo reception, connect external FM antenna.

Step 2: Connecting the speakers

Connect the speaker wires to the SPEAKERS terminals, right speaker to "R" and left speaker to "L", coloured (marked) wire to "+" and black (unmarked) wire to "-". Fully insert the stripped portion of the speaker wire into the terminal as shown.

Notes:

- Ensure that the speaker cables are correctly connected. Improper connections may damage the system due to short-circuit.
- Do not connect more than one speaker to any one pair of +/– speaker terminals.

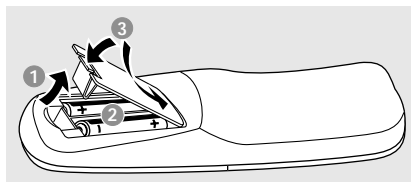
Step 3: Connecting to PC (page 3 – P5)

Use the supplied USB cable to connect the system to your personal computer's USB port. After installed the USB PC LINK application software onto your PC, you are able to playback your music collection via the system (refer to "USB PC Link").

Step 4: Connecting the AC power cord

"AUTO INSTALL – PRESS PLAY" may appear on the display panel when the AC power cord is plugged into the power outlet for the first time. Press ►► on the main unit to store all available radio stations (page 3 – P3) or press ■ to exit (refer to "Tuner Operations").

Step 5: Inserting batteries into the remote control



- ❶ Open the battery compartment cover.
- ❷ Insert two batteries type R06 or AA, following the indications (+ -) inside the compartment.
- ❸ Close the cover.

Using the remote control to operate the system

- ❶ Aim the remote control directly at the remote sensor (iR) on the main unit.
- ❷ Select the source you wish to control by pressing one of the source select keys on the remote control (for example CD,TUNER).
- ❸ Then select the desired function (for example ►►, ◀◀, ▶▶).

CAUTION!

- Remove batteries if they are exhausted or will not be used for a long time.
- Do not use old and new or different types of batteries in combination.
- Batteries contain chemical substances, so they should be disposed of properly.

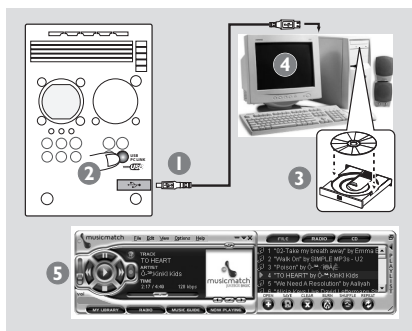
USB PC Link

Quick Setup Guide

PC system requirement

- Windows 98 **(SE)**/ME/2000/XP
- Intel Pentium MMX200 or higher
- CD-ROM drive
- USB port
- Free hard disk space: 15 MB for the software

Install MusicMatch software



- 1 Use the supplied USB cable to connect the audio system to your personal computer's USB port.
- 2 Press **USB PC LINK**.
- 3 Turn on the PC and insert the USB PC LINK installer disc (which comes with this product) onto the PC's CD-ROM drive.
This application software can also be downloaded from "<http://www.audio.philips.com>".

IMPORTANT!

Please use this customised MusicMatch software for your USB PC Link application. Remember to un-install all other MusicMatch jukebox software first from your PC system (if available).

- 4 The installation guide will appear automatically. If it does not, go to the CD-ROM drive in Windows Explorer and double click on the "**USBPCLINK.exe**". Then perform the following steps:
 - First, select your desired language from the list.
 - Then, select "**installer driver**" and follow by "**installer MusicMatch jukebox**".
 - Select other options (Tutorial, Free goodies, FAQ).

Note:

– You are advised to read the MusicMatch tutorial before using it for the first time. Make sure the mute function on the PC is deactivated in order to ensure sound output from the Audio System. For optimum performance, the equaliser function in MusicMatch should be set to a low level.

- 5 Launch the "**MUSICMATCH JUKEBOX**" and choose to do one of the followings :

To create a "Playlist"

Select "**Open**" button on the MusicMatch Jukebox and simply drag/ drop the music tracks from anywhere on your PC into the "**Playlist**" window. Remember to save this "**Playlist**" for future use.

To create a music library

A music library of all stored music files available on your PC can be setup by simply select "**add**" function on the MusicMatch Jukebox. Once created, you may then choose to drag/ drop any music tracks from this library to a "**Playlist**" for music playback.

Note:

– It is not possible to create a playlist from the system's 5 CD changer. If you encounter problem using USB PC LINK, please refer to the FAQ (Frequently Asked Questions) stored in your USB PC LINK installer disc or visit "www.audio.philips.com" for latest update on FAQ.

Enable digital CD audio output

Before playing the CD through your PC's CD-ROM drive, it is necessary to configure your PC's hardware as follows:

For Windows ME/2000/XP

- 1 Enter the system control panel menu and select:
"SYSTEM → HARDWARE →
DEVICE MANAGER → CD-ROM DRIVES →
ACTION-PROPERTIES → PROPERTIES".

OR

For Windows 98 (SE)

Enter the system control panel menu and select: "MULTIMEDIA" and "CD MUSIC".

- 2 Check the 'Enable digital CD audio for this CD-ROM device' setting option is selected (enabled).

Note:

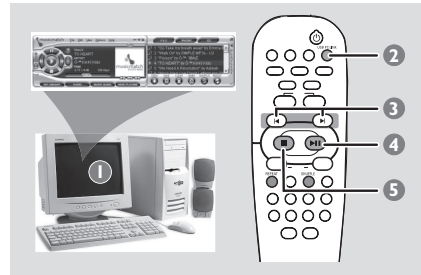
— You may need to refer to your PC's manual for correct configuration.

Connecting to USB PC Link

USB PC LINK allows you to playback your music collection from the PC via the powerful amplifier and speakers of this system.

IMPORTANT!

Make sure the MusicMatch software has been installed. Refer to "Quick Setup Guide" for USB PC Link.



- 1 Turn on your computer and launch the "MUSICMATCH JUKEBOX".
→ The volume level of PC should not be put into mute.
- 2 Press **USB PC LINK**.
→ If the audio streaming is detected, "CONNECTING" is displayed and the USB indicator will be flashing.
→ If "NO CONNECTION" is displayed, check the connection between your PC and micro system.
- 3 Press **◀** or **▶** until the desired track in the playlist is highlighted.
- 4 Press **▶ ||** to start playback.
→ The track information will appear on the display. The display only supports English characters.

During playback,
— Press **SHUFFLE** to play all available tracks in the playlist in random order.
— Press **REPEAT** to repeat playback of all the tracks in the playlist.
- 5 To exit, select another active mode or press **■**.

Basic Operations

Switching on/off

Switching to active mode

- Press **CD, TUNER, AUX** or **USB PC LINK**.

Switching to Eco Power standby mode

- Press **⏻**.
→ ECO POWER button lights up.
→ The display screen will go blank.

Switching to standby mode (view clock)

- Press and hold **⏻**.
→ The clock is displayed.
→ While in standby mode, pressing **CLOCK•TIMER** button will switch the system to Eco Power standby mode.

Note:

- Before switching the system to Eco Power standby or standby mode, make sure the demonstration mode has been deactivated.

Demonstration mode

If the demonstration mode is active, whenever you switch the system to Eco Power standby or standby mode, it will begin showing the various features offered by the system.

To activate the demonstration

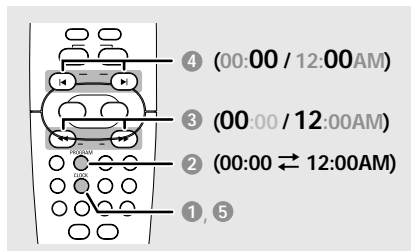
- In Eco Power standby/standby mode, press and hold **■** on the main unit until "DEMO ON" is displayed.

To deactivate the demonstration

- Press and hold **■** on the main unit until "DEMO OFF" is displayed.

Setting the clock

The clock can be set in either 12-hour or 24-hour mode ("11:59 PM" or "23:59" for example).



- 1 Press and hold **CLOCK** on the remote until the time flashing on the display.
OR

Press and hold **CLOCK•TIMER** on the main unit until "SELECT CLOCK OR TIMER" is displayed. Then press **▶** to change the display to "CLOCK" and press **CLOCK•TIMER** again to confirm.

- 2 Press **PROGRAM (PROG)** repeatedly to change between 12-hour and 24-hour clock mode.
- 3 Press **◀** or **▶** repeatedly to set the hour.
- 4 Press **◀** or **▶** repeatedly to set the minute.
- 5 Press **CLOCK** (or **CLOCK•TIMER**) to store the setting.
→ The clock will start working.

Notes:

- The clock setting will be erased when the system is disconnected from the power supply.
- The system will exit clock setting mode if no button is pressed within 90 seconds.
- To set the clock automatically through the time information in the RDS signal, refer to "Tuner Operations – Setting the RDS clock".

Selecting different display mode

Dim mode

You can select the desired brightness for the display panel.

- In any active mode, press **DIM** repeatedly to select DIM 1, DIM 2, DIM 3 or DIM OFF display mode.
→ **DIM** is shown, except for DIM OFF mode.

DIM mode	button illumination	display brightness	Spectrum analyser
DIM OFF	on	full	on
DIM 1	on	full	off
DIM 2	on	half	on
DIM 3	off	half	off

Note:

- Pressing **DIM** button in standby mode will toggle between half and full brightness.

Clock display mode

You can choose to show the clock display only.

- Press **CLOCK•TIMER** (or **CLOCK** on remote).
→ In any active mode, pressing the button again will resume normal display.

Note:

- If you pressed any buttons in clock display mode, the display will briefly show the information related to the selected mode.

Volume control

- Adjust **MASTER VOLUME** (or press **VOL +/–** on remote) to increase or decrease the sound level.
→ "**VOL MUTE**" is the minimum volume level and "**0 0 0**" is the maximum volume level.

To switch off the volume temporarily

- Press **MUTE** on the remote.
→ Playback will continue without sound and "**MUTE**" is displayed.
→ To restore the volume, press **MUTE** again or increase the volume level.

Sound control

You are only able to select one of the sound controls at a time : MAX sound, DSC or VEC.

MAX sound

MAX sound provides the best mixture of various sound features (DSC, VEC for example).

- Press **MAX SOUND** (or **MAX ON/OFF** on remote).
→ If activated, **MAX** is shown and the MAX SOUND button lights up. All other sound effects (DSC or VEC) will be switched off automatically.

Digital Sound Control

DSC provides a different type of preset sound equaliser setting.

- Press **DSC** repeatedly to select: **OPTIMAL**, **JAZZ**, **ROCK** or **POP**.

Virtual Environment Control

VEC provides a different type of environment-based equaliser setting.

- Press **VEC** repeatedly to select: **HALL**, **CINEMA**, **CONCERT** or **CYBER**.

Disc Operations

IMPORTANT!

- This system is designed for regular discs. Therefore, do not use any accessories such as disc stabiliser rings or disc treatment sheets, etc., as offered on the market, because they may jam the changer mechanism.
- Do not load more than one disc onto each tray.

Playable discs

This system is able to play:

- All pre-recorded audio CDs
- All finalised audio CDR and audio CDRW discs
- MP3-CDs (CD-ROMs with MP3 tracks)



Loading discs (page 3 – P4)

- 1 Press **OPEN/CLOSE ▲ 1** button to open disc tray 1.
- 2 Load a disc with the label side facing up. For double-sided discs, load the side you want to play facing up.
- 3 Press **OPEN/CLOSE ▲ 1** button again to close the disc tray.
→ "READING" is displayed. The selected disc tray, total number of tracks and the playing time will appear on the display.
- 4 Repeat **steps 1~3** for loading discs onto the disc trays 2~5.

Notes:

- To ensure good system performance, wait until the disc trays completely read the disc(s) before proceeding.
- Only one tray can be opened at each time. If you open the second tray before closing the first tray, the first tray will automatically close before the second tray opens.

Basic playback controls

Load discs (page 3 – P4).

To play all discs on the disc trays

- Press **▶||**
OR

In stop mode, press **CD** to select a disc tray to begin, then press **▶||**.

→ All the available discs will play once, then stop.

To play the selected disc only

- Press one of the **5 DISC DIRECT PLAY (DISC 1~5)** buttons (or **CD 1~5** on remote).
→ The selected disc will play once, then stop.

To select a desired track

- Press **◀|** or **|▶** repeatedly until the desired track is displayed.
→ During random play (shuffle mode), pressing **◀|** will not affect the current playback.

To search for a particular passage during playback

- Press and hold **◀◀** or **▶▶** and release it when the desired passage is located.
→ During searching, the volume will be reduced. For MP3 disc, the volume will be muted.

To replace discs without interrupting playback

- Press **OPEN/CLOSE ▲** buttons of the inactive disc trays (refer to "Loading discs"). For example, if currently disc tray 1 is playing, you can replace the discs on disc tray 2~5.

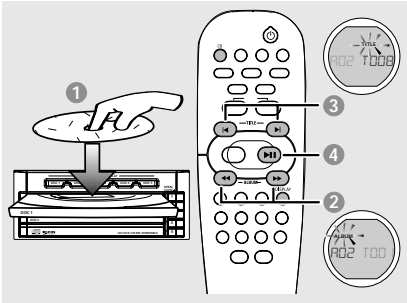
To interrupt playback

- Press **▶||**
→ To resume normal playback, repeat the above.

To stop playback

- Press **■**.
→ If the system remains in stop mode for 30 minutes, it will switch to Eco Power standby mode.

Playing an MP3 disc



- 1 Load an MP3 disc.
→ The disc reading time may exceed 10 seconds due to the large number of songs compiled into one disc.
→ "A: X X T Y Y Y" is displayed. X X is the current album number and Y Y Y is the current title number.
- 2 Press **ALBUM** ▼▲ (or ◀▶) to select a desired album.
- 3 Press **TITLE** + - (or ◀▶) to select a desired title.
- 4 Press ▶|| to start playback.
- During playback, press **DISPLAY** to show the album and title name.

Supported MP3 disc formats:

- ISO9660, Joliet, UDF 1.5
- Maximum title number : 999 (depending on filename length)
- Maximum album number : 99
- Supported sampling frequencies: 32 kHz, 44.1 kHz, 48 kHz
- Supported Bit-rates : 32~256 (kbps), variable bitrates
- ID3 tags : V1.1, V2.2, V2.3, V2.4

Repeat and Shuffle

You can select and change the various play modes before or during playback.

Repeat play

- 1 Press **REPEAT** on the remote repeatedly to select :

REP	TRK	REP DISC	REP DISC ALL	REP TRK PROG	REP PROG ALL
(A)		(B)	(C)	(D)	(E)

- (A) – to repeat playback of the current track.
- (B) – to repeat playback of the current disc.
- (C) – to repeat playback of all available discs **(not available for this model)**.
- (D) – to repeat playback of the current programmed track (only if the programme mode is active)
- (E) – to repeat playback of all the programmed tracks (only if the programme mode is active)

- 2 To resume normal playback, press **REPEAT** until "OFF" is displayed.

Random play

- Press **SHUFFLE** on the remote to turn on/off the shuffling mode.
→ If activated, **SHUF** is shown and the repeat mode (if any) will be cancelled.
→ The random play will start from the current disc tray. Only after all the tracks in the active disc tray has been shuffled, then it will change to the next available disc tray.
→ If programme mode is active, only the programmed tracks will be played in random order.

Note:

- Pressing the **OPEN/CLOSE** button will cancel all repeat and shuffling modes.

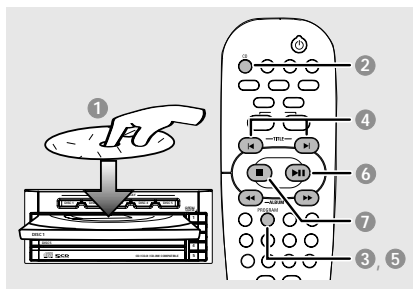
Disc Operations

Programming the disc tracks

Programming tracks is possible when playback is stopped. Up to 99 tracks can be stored in the memory in any order.

IMPORTANT!

It is only possible to programme from the current selected disc tray.



- 1 Load the desired discs on the disc trays (refer to "Loading discs").
- 2 Press **CD** or one of the **DISC 1-5** buttons to select a disc.
- 3 Press **PROGRAM (PROG)** to start programming.
→ **PROG** starts flashing.
- 4 Press **◀** or **▶** repeatedly to select the desired track.
- For MP3 disc, press **◀◀** / **▶▶** (**ALBUM ▼▲**) and **◀** / **▶** (**TITLE - +**) to select the desired album and title for programming.
- 5 Press **PROGRAM (PROG)** to store.
- Repeat **steps 4~5** to select other tracks.
→ If you attempt to programme more than 99 tracks, "PROGRAM FULL" is displayed.
- 6 To start programme play, press **▶||**
- 7 To stop playback or to end the programming, press **■** **once**.
→ **PROG** stays and the programme mode remains active.

Notes:

- If the total playing time reached 100 minutes or if one of the programmed tracks has a number greater than 30, then "----:--" is displayed instead of the total playing time.
- The system will exit programming mode if no button is pressed within 20 seconds.

Checking the programme

- 1 Stop playback and press **◀** or **▶** repeatedly.
- 2 Press **■** to exit.
OR
Press **▶||** to start playback from the current programmed track

Clearing the programme

- Stop playback, then press **■** to clear the programme.
OR

Press the **OPEN/CLOSE ▲** button of the disc tray.

→ **PROG** disappears and "PROGRAM CLEAR" is displayed.

Note:

- The programme will be erased if the system is disconnected from the power supply or you switch to other source mode.

Tuner Operations

IMPORTANT!

Make sure the FM and MW antennas are connected.

Tuning to radio stations

- ① Press **TUNER** to enter tuner mode.
To select another waveband (FM or MW), press **TUNER** again.
- ② Press and hold ◀▶ or ▶▶ until the frequency indication starts to change, then release.
→ The system automatically tunes to the next strong signal radio reception.
→ ∞ lights up for FM stereo reception.
→ RDS lights up for RDS station (in FM band only).

For tuning to a weak signal station

- Press ◀▶ or ▶▶ briefly and repeatedly until an optimal reception is found.

Presetting radio stations

You can store up to 40 preset radio stations in the memory, starting from FM and followed by MW bands.

Notes:

- The system will exit presetting mode if no button is pressed within 20 seconds.
- If no stereo frequency is detected during Plug and Play, "CHECK ANTENNA" is displayed.

Using the Plug and Play (page 3 - P3)

Plug and Play allows you to store all available radio stations automatically.

- ① Connect the system to the power supply, "AUTO INSTALL - PRESS PLAY" is displayed.
OR

In Eco Power standby/standby mode, press and hold ▶▶ on the main unit until "AUTO INSTALL - PRESS PLAY" is displayed.

- ② Press ▶▶ on the main unit to start installation.
→ "INSTALL TUNER" is displayed.
→ All previously stored radio stations will be replaced.
→ Once completed, the last tuned radio station (or the first available RDS station) will be played.
- ③ If the first preset is a RDS station, it will proceed to set the RDS clock.
→ "INSTALL" is displayed, followed by "TIME" and "SEARCH RDS TIME".
→ When RDS time is read, "RDS TIME" is displayed and the current time will be stored.
→ If RDS station does not transmit RDS time within 90 seconds, "NO RDS TIME" is displayed and the programme will exit automatically.

Automatic presetting

You can start the automatic presetting from a selected preset number:

- ① In tuner mode, press ◀ or ▶ to select a preset number.
- ② Press and hold **PROGRAM (PROG)** until "AUTO" is displayed.
→ If a radio station has been stored in one of the presets, it will not be stored again under another preset number.
→ If no preset number is selected, automatic preset will begin from preset (1) and all your former presets will be overridden.

Manual presetting

You can choose to store only the favourite radio stations.

- ① Tune to your desired radio station (refer to "Tuning to radio stations").
- ② Press **PROGRAM (PROG)**.
→ The preset number starts flashing. If you want to store the radio station in another preset number, press ◀ or ▶.
- ③ Press **PROGRAM (PROG)** again to store.
- Repeat **steps 1~3** to store other radio stations.

Tuner Operations

Selecting a preset radio station

- In tuner mode, press **◀** or **▶**.
→ The preset number, radio frequency, and waveband are displayed.

Deleting a preset radio station

- Press and hold **■** until "PRESET DELETE" is displayed.
→ The current preset radio station will be deleted.
→ All other preset radio stations with higher numbers are decreased by one.

RDS

RDS (**R**adio **D**ata **S**ystem) is a service that allows FM stations to show additional information. If you are receiving a RDS station, **RDS** and the station name are displayed.

Scrolling through RDS information

- Tuned to a RDS radio station from FM band, then press **NEWS•RDS** repeatedly to select the following information (if available):
 - Station name
 - Programme type (for example: News, Affairs, Sport, etc.)
 - Radio text messages
 - Frequency

Setting the RDS clock

Some RDS radio station may be transmitting a real clock time at an interval of every minute. It is possible to set the clock by using a time signal which is broadcast together with the RDS signal.

- 1 Tuned to a RDS station from FM band (refer to "Tuning to radio stations").
- 2 Press and hold **CLOCK•TIMER** on the main unit until "SELECT CLOCK OR TIMER" is displayed. Then press **▶** to change the display to "CLOCK" and press **CLOCK•TIMER** again to confirm.
- 3 Press **NEWS•RDS**.
→ "SEARCH RDS TIME" is displayed.
→ When RDS time is read, the current time will be stored.
→ If the RDS station does not transmit RDS time within 90 seconds, "NO RDS TIME" is displayed.

Note:

- Some RDS radio station may be transmitting a real time clock at a minute interval. The accuracy of the transmitted time depends on the transmitting RDS radio station.

NEWS

You may set up the tuner in such a way that listening to CD or external source is interrupted by the NEWS of a RDS station. This only works if the RDS station broadcasts a NEWS signal while sending the news.

IMPORTANT!

You can activate NEWS function from any source mode except TUNER.

Switching on NEWS function

- ① In any active mode, press **NEWS•RDS** until "NEWS" is displayed.
 - **NEWS** is shown.
 - The system will scan the radio stations stored in the first five (5) preset and wait for the News Programme Type data to be available in any of these RDS stations.
 - While searching NEWS in progress, the current active mode remains uninterrupted.
- ② When NEWS transmission is detected, the system will switch to Tuner mode.
 - **NEWS** starts flashing.
- If no RDS station is detected in the first five presets, the system will exit NEWS function.
 - "NO RDS NEWS" is displayed.

Notes:

- You have to exit Tuner mode before selecting NEWS function.
- Before you activate the NEWS feature, ensure that the first five presets have RDS stations.
- The NEWS works only once for each activation.

To cancel NEWS function

- Press **NEWS•RDS** again or switch the system to tuner mode.
- OR

During news bulletin, press any other available source keys to execute the relevant source mode.

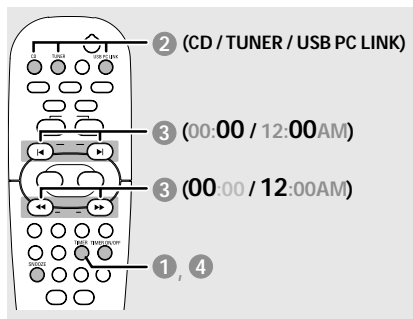
Timer Operations

Timer setting

The system can switch on to CD, TUNER or USB PC LINK mode automatically at a preset time, serving as an alarm to wake you up.

IMPORTANT!

- Before setting the timer, ensure that the clock is set correctly.
- The volume of the timer will increase gradually to the last tuned volume level. If the last tuned volume level is too low, the set will then increase to a predetermined minimum audible level.



- 1 Press and hold **TIMER** on the remote until icon starts flashing.
OR
Press and hold **CLOCK•TIMER** on the main unit until "SELECT CLOCK OR TIMER" is displayed. Then press **▶** to change the display to "TIMER" and press **CLOCK•TIMER** again to confirm.
- 2 Press **CD** or **TUNER** or **USB PC LINK** to select the wake-up source.
→ The selected source will be lighted while other available sources are flashing.
- 3 Press **◀◀** or **▶▶** (for hours) and **◀** or **▶** (for minutes) repeatedly to set the wake up time.
- 4 Press **TIMER** (or **CLOCK•TIMER**) to store the setting.
→ The timer will always be switched on after it has been set.
→ icon remains on the display. It indicates the timer is activated.

- At the preset time, the selected sound source will be played for 30 minutes before it switches to Eco Power standby mode (if no button is being pressed within the time frame).
→ **CD** – playing the first track of the last selected disc. If the last selected disc tray is empty, it will switch to the next available disc. If all the disc trays are not available, it will switch to Tuner mode.
→ **TUNER** – playing the last tuned radio station.
→ **USB PC LINK** – playing the last selected playlist. If the connection fails, it will switch to Tuner mode. Refer to "USB PC Link" for proper connection and setup before use.

Activating/Deactivating the timer

- Press **TIMER ON/OFF** on the remote to turn off the timer or turn on to the last setting again.
→ If activated, the timer information will display for a few seconds, then the system resumes to the last active source or stays in standby mode.
→ If deactivated, "OFF" is displayed.

Note:

- The system will exit timer setting mode if no button is pressed within 90 seconds.

Checking the timer setting

- Press **TIMER** on the remote.
→ The timer information will display for a few seconds, then the system resumes to the last active source or stays in standby mode.

Temporarily deactivating the wake up timer

You are only able to activate the Snooze function within 30 minutes after the timer wake up from standby mode.

- 1 After timer wake up, press **SNOOZE** on the remote.
→ The system will switch to standby mode for five minutes. After that, it resumes the timer last selected source again.
- 2 To cancel the snooze function, press **SNOOZE** again.

Sleep timer setting

The sleep timer turns the system to Eco Power standby mode at a preselected time.

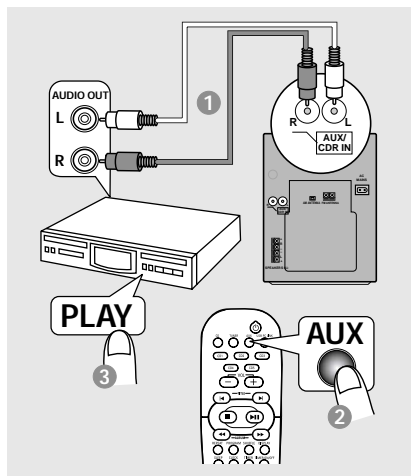
- 1 Press **SLEEP** repeatedly until it reaches the desired preset turn-off time.
→ The selections are as follows (time in minutes):
15 → 30 → 45 → 60 → 90 → 120 → OFF → 15 ...
→ **SLEEP** is shown, except for "OFF" mode.
→ To view or change the setting, repeat the above.
- 2 Before the system switches to Eco Power standby mode, a countdown of 10 seconds is displayed.
"SLEEP 10" → "SLEEP 9".... → "SLEEP 1"
→ "SLEEP"

To cancel the sleep timer

- Press **SLEEP** repeatedly until "OFF" is displayed, or press the **STANDBY ON** button.

Listening to an external source

You can listen to the sound of the connected external device through your system's speakers.



- 1 Use the red/white audio cables to connect the system's **AUX/CDR IN (R/L)** terminals to the **AUDIO OUT** terminals on the other audio/visual device (such as a TV/VCR, Laser Disc player, DVD player or CD recorder)
→ If the connecting device has only a single audio out terminal, connect it to the **AUX/CDR IN** left terminal. Alternatively, you can use a "single to double" cinch cable, but the output sounds still remain mono.
- 2 Press **AUX** repeatedly.
→ Select "AUX" when connecting to a TV, VCR or Laser Disc player.
→ Select "AUX/CDR" when connecting to a CD recorder or DVD player.
- 3 Press **PLAY** on the connected device to start playback.

Notes:

- All the sound control features (DSC, VEC for example) are available for selection.
- Always refer to the owner's manual of the other equipment for complete connection and use details.

Specifications

AMPLIFIER

Output power	2 x 200 W MPO 2 x 100 W RMS ⁽¹⁾
Signal-to-noise ratio	≥ 75 dBA (IEC)
Frequency response	50 – 20000 Hz, –3 dB
Input sensitivity	
AUX/CDR In	500 mV/1V
Output	
Speakers	≥ 6 Ω
Headphones	32 Ω – 1000 Ω
⁽¹⁾ (6 Ω, 1 kHz, 10% THD)	

DISC PLAYER

Programmable tracks	99
Frequency response	20 – 20000 Hz, –3 dB
Signal-to-noise ratio	≥ 76 dBA
Channel separation	≥ 60 dB (1 kHz)
MPEG 1 Layer 3 (MP3-CD)	MPEG AUDIO
MP3-CD bit rate	32-256 kbps (128 kbps advised)
Sampling frequencies	32, 44.1, 48 kHz

USB

Frequency response	20 – 20000 Hz, –3 dB
Signal-to-noise ratio	≥ 75 dBA
Channel separation	≥ 40 dB (1 kHz)
Total harmonic distortion	< 0.3% (1 kHz)

TUNER

FM wave range	87.5 – 108 MHz
MW wave range	531 – 1602 kHz
Number of presets	40
Antenna	
FM	75 Ω wire
AM	Loop antenna

SPEAKERS

System	3 way, Bass reflex
Impedance	6 Ω
Woofer	1 x 6.5"
Tweeter	1 x 1.5" Ferrofluid
cooled	
Dimensions (w x h x d)	205 x 268 x 230 (mm)
Weight	3,1 kg each

GENERAL

Material/finish	Polystyrene/Metal
AC Power	220 – 230 V / 50 Hz
Power Consumption	
Active	80 W
Standby	< 15 W
Eco Power Standby	< 0.5 W
Dimensions (w x h x d)	175 x 268 x 316 (mm)
Weight (without speakers)	5.3 kg

Specifications and external appearance are subject to change without notice.

WARNING

Under no circumstances should you try to repair the system yourself, as this will invalidate the warranty. Do not open the system as there is a risk of electric shock.

If a fault occurs, first check the points listed below before taking the system for repair. If you are unable to remedy a problem by following these hints, consult your dealer or Philips for help.

Problem	Solution
When in USB PC LINK mode, "NO CONNECTION" is displayed.	<ul style="list-style-type: none"> ✓ Check the connection between your PC and the system and the initial setup required, see "Connections" and "USB PC Link". ✓ Make sure the connected PC is turned on.
Radio reception is poor.	<ul style="list-style-type: none"> ✓ If the signal is too weak, adjust the antenna or connect an external antenna for better reception. ✓ Increase the distance between the system and your TV or VCR.
"NO DISC" is displayed or the disc cannot be played.	<ul style="list-style-type: none"> ✓ Insert a disc. ✓ Load in the disc with label facing right. ✓ Replace or clean the disc, see "Care and safety information". ✓ Use a finalised CD-R(W) or a correct format disc.
The system does not react when buttons are pressed.	<ul style="list-style-type: none"> ✓ Remove and reconnect the AC power cord and switch on the system again.
Sound cannot be heard or is of poor quality.	<ul style="list-style-type: none"> ✓ Adjust the volume. ✓ Disconnect the headphones. ✓ Check that the speakers are connected correctly. ✓ Check that the AC power cord is connected properly. ✓ When in USB PC LINK mode, check that the PC's volume is not put into mute. ✓ When playing CD from PC's CD drive, refer to "USB PC Link – Enable digital CD audio output".
The remote control does not function properly.	<ul style="list-style-type: none"> ✓ Select the source (CD or TUNER, for example) before pressing the function button (► , ◀◀, ▶▶). ✓ Reduce the distance between the remote control and the system. ✓ Replace the battery. ✓ Point the remote control directly toward the IR sensor.
The timer is not working.	<ul style="list-style-type: none"> ✓ Set the clock correctly. ✓ Press TIMER ON/OFF to switch on the timer.
The system displays features automatically and buttons start flashing.	<ul style="list-style-type: none"> ✓ Press and hold DEMO STOP on the main unit to switch off the demonstration mode.

Refer to the FAQ (Frequently Asked Questions) on the supplied CD-ROM or visit our website "www.audio.philips.com" for latest update on FAQ.

Meet Philips at the Internet
<http://www.philips.com>

English

Français

Español

Deutsch

Nederlands

Italiano

Svenska

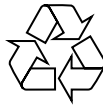
Dansk

Suomi

Português

Ελληνικά

Polski



MC-M570

**CLASS 1
LASER PRODUCT**

3139 115 22161



SgpJP-0308/22-12