

Dell Latitude E7440 Owner's Manual

Regulatory Model: P40G
Regulatory Type: P40G001



Notes, Cautions, and Warnings



NOTE: A NOTE indicates important information that helps you make better use of your computer.



CAUTION: A CAUTION indicates either potential damage to hardware or loss of data and tells you how to avoid the problem.



WARNING: A WARNING indicates a potential for property damage, personal injury, or death.

© 2013 Dell Inc.

Trademarks used in this text: Dell™, the Dell logo, Dell Boomi™, Dell Precision™, OptiPlex™, Latitude™, PowerEdge™, PowerVault™, PowerConnect™, OpenManage™, EqualLogic™, Compellent™, KACE™, FlexAddress™, Force10™ and Vostro™ are trademarks of Dell Inc. Intel®, Pentium®, Xeon®, Core® and Celeron® are registered trademarks of Intel Corporation in the U.S. and other countries. AMD® is a registered trademark and AMD Opteron™, AMD Phenom™ and AMD Sempron™ are trademarks of Advanced Micro Devices, Inc. Microsoft®, Windows®, Windows Server®, Internet Explorer®, MS-DOS®, Windows Vista® and Active Directory® are either trademarks or registered trademarks of Microsoft Corporation in the United States and/or other countries. Red Hat® and Red Hat® Enterprise Linux® are registered trademarks of Red Hat, Inc. in the United States and/or other countries. Novell® and SUSE® are registered trademarks of Novell Inc. in the United States and other countries. Oracle® is a registered trademark of Oracle Corporation and/or its affiliates. Citrix®, Xen®, XenServer® and XenMotion® are either registered trademarks or trademarks of Citrix Systems, Inc. in the United States and/or other countries. VMware®, vMotion®, vCenter®, vCenter SRM™ and vSphere® are registered trademarks or trademarks of VMware, Inc. in the United States or other countries. IBM® is a registered trademark of International Business Machines Corporation.

2013 - 07

Rev. A00

Contents

1 Working on Your Computer.....	5
Before Working Inside Your Computer.....	5
Turning Off Your Computer.....	6
After Working Inside Your Computer.....	7
 2 Removing and Installing Components.....	 9
Recommended Tools.....	9
System Overview.....	9
Inside View — BackInside View — Front.....	9
Removing the SD Card.....	10
Installing the SD Card.....	11
Removing the Battery.....	11
Installing the Battery.....	12
Removing the Base Cover.....	12
Installing the Base Cover.....	14
Removing the Hard Drive	14
Installing the Hard Drive	16
Removing the Keyboard Trim.....	16
Installing the Keyboard Trim.....	16
Removing the Keyboard.....	17
Installing the Keyboard.....	18
Removing the WLAN Card.....	19
Installing the WLAN Card.....	19
Removing the mSATA SSD Card.....	19
Installing the mSATA SSD Card.....	20
Removing the Memory Module.....	20
Installing the Memory Module.....	20
Removing the Coin-Cell Battery.....	20
Installing the Coin-Cell Battery.....	21
Removing the Palmrest.....	21
Installing the Palmrest.....	24
Removing the Speakers.....	25
Installing the Speakers.....	26
Removing the Display-Hinge Cover.....	26
Installing the Display-Hinge Cover.....	27
Removing the Display Assembly.....	27
Installing the Display Assembly.....	32
Removing the System Fan.....	32


Installing the System Fan.....	33
Removing the Heatsink.....	33
Installing the Heatsink.....	34
Removing the System Board.....	34
Installing the System Board.....	37
Removing the Power Connector	38
Installing the Power Connector.....	38
Removing the I/O Board.....	38
Installing the I/O Board.....	39
Removing the Display Bezel.....	40
Installing the Display Bezel.....	40
Removing the Display Panel.....	40
Installing the Display Panel.....	41
Removing the Camera.....	41
Installing the Camera.....	42
3 Docking Port Information.....	43
4 System Setup.....	45
Boot Sequence.....	45
Navigation Keys.....	45
System Setup Options.....	46
Updating the BIOS	55
System and Setup Password.....	56
Assigning a System Password and Setup Password.....	56
Deleting or Changing an Existing System and/or Setup Password.....	57
5 Diagnostics.....	59
Enhanced Pre-Boot System Assessment (ePSA) Diagnostics.....	59
Device Status Lights.....	59
Battery Status Lights.....	60
6 Specifications.....	61
7 Contacting Dell.....	67


Working on Your Computer

Before Working Inside Your Computer


Use the following safety guidelines to help protect your computer from potential damage and to help to ensure your personal safety. Unless otherwise noted, each procedure included in this document assumes that the following conditions exist:


- You have performed the steps in Working on Your Computer.
- You have read the safety information that shipped with your computer.
- A component can be replaced or--if purchased separately--installed by performing the removal procedure in reverse order.


 **WARNING:** Before working inside your computer, read the safety information that shipped with your computer. For additional safety best practices information, see the Regulatory Compliance Homepage at www.dell.com/regulatory_compliance

 **CAUTION:** Many repairs may only be done by a certified service technician. You should only perform troubleshooting and simple repairs as authorized in your product documentation, or as directed by the online or telephone service and support team. Damage due to servicing that is not authorized by Dell is not covered by your warranty. Read and follow the safety instructions that came with the product.

 **CAUTION:** To avoid electrostatic discharge, ground yourself by using a wrist grounding strap or by periodically touching an unpainted metal surface, such as a connector on the back of the computer.

 **CAUTION:** Handle components and cards with care. Do not touch the components or contacts on a card. Hold a card by its edges or by its metal mounting bracket. Hold a component such as a processor by its edges, not by its pins.

 **CAUTION:** When you disconnect a cable, pull on its connector or on its pull-tab, not on the cable itself. Some cables have connectors with locking tabs; if you are disconnecting this type of cable, press in on the locking tabs before you disconnect the cable. As you pull connectors apart, keep them evenly aligned to avoid bending any connector pins. Also, before you connect a cable, ensure that both connectors are correctly oriented and aligned.

 **NOTE:** The color of your computer and certain components may appear differently than shown in this document.

To avoid damaging your computer, perform the following steps before you begin working inside the computer.

1. Ensure that your work surface is flat and clean to prevent the computer cover from being scratched.
2. Turn off your computer (see [Turning Off Your Computer](#)).
3. If the computer is connected to a docking device (docked) such as the optional Media Base or Battery Slice, undock it.

 **CAUTION:** To disconnect a network cable, first unplug the cable from your computer and then unplug the cable from the network device.

4. Disconnect all network cables from the computer.
5. Disconnect your computer and all attached devices from their electrical outlets.

6. Close the display and turn the computer upside-down on a flat work surface.



NOTE: To avoid damaging the system board, you must remove the main battery before you service the computer.

7. Remove the main battery.
8. Turn the computer top-side up.
9. Open the display.
10. Press the power button to ground the system board.



CAUTION: To guard against electrical shock, always unplug your computer from the electrical outlet before opening the display.






CAUTION: Before touching anything inside your computer, ground yourself by touching an unpainted metal surface, such as the metal at the back of the computer. While you work, periodically touch an unpainted metal surface to dissipate static electricity, which could harm internal components.

11. Remove any installed ExpressCards or Smart Cards from the appropriate slots.

Turning Off Your Computer



CAUTION: To avoid losing data, save and close all open files and exit all open programs before you turn off your computer.

1. Shut down the operating system:
 - In Windows 8:
 - * Using a touch-enabled device:
 - a. Swipe in from the right edge of the screen, opening the Charms menu and select **Settings**.
 - b. Select the  and then select **Shut down**
 - * Using a mouse:
 - a. Point to upper-right corner of the screen and click **Settings**.
 - b. Click the  and select **Shut down**.
 - In Windows 7:
 1. Click **Start** .
 2. Click **Shut Down**.

or

1. Click **Start** .
2. Click the arrow in the lower-right corner of the **Start** menu as shown below, and then click **Shut**



Down..

2. Ensure that the computer and all attached devices are turned off. If your computer and attached devices did not automatically turn off when you shut down your operating system, press and hold the power button for about 4 seconds to turn them off.

After Working Inside Your Computer

After you complete any replacement procedure, ensure you connect any external devices, cards, and cables before turning on your computer.



CAUTION: To avoid damage to the computer, use only the battery designed for this particular Dell computer. Do not use batteries designed for other Dell computers.

1. Connect any external devices, such as a port replicator, battery slice, or media base, and replace any cards, such as an ExpressCard.
2. Connect any telephone or network cables to your computer.



CAUTION: To connect a network cable, first plug the cable into the network device and then plug it into the computer.

3. Replace the battery.
4. Connect your computer and all attached devices to their electrical outlets.
5. Turn on your computer.

Removing and Installing Components

This section provides detailed information on how to remove or install the components from your computer.

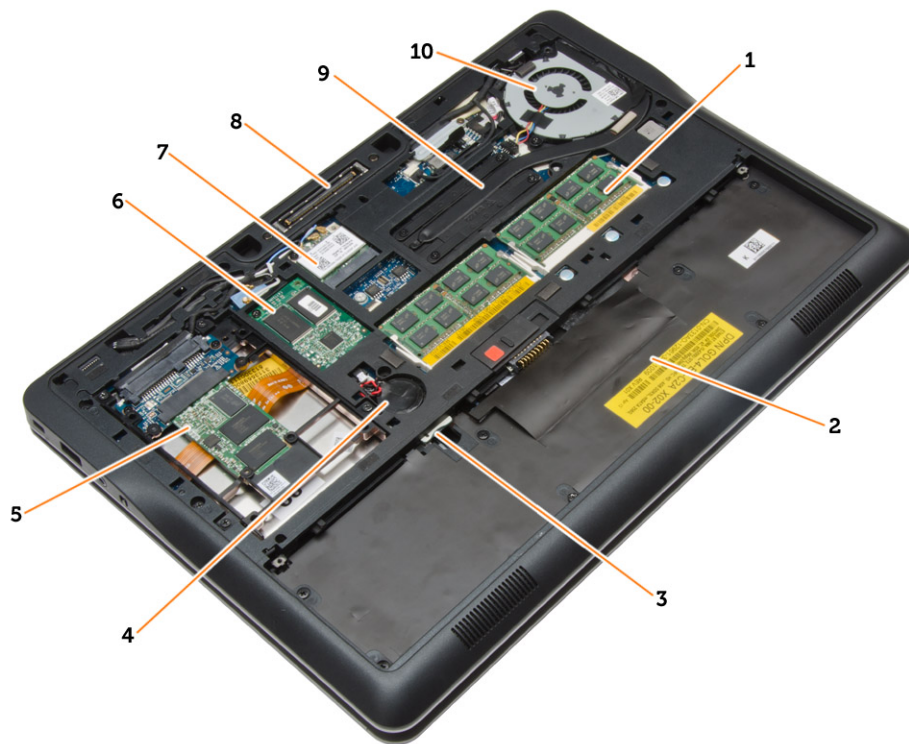
Recommended Tools

The procedures in this document may require the following tools:

- Small flat-blade screwdriver
- Phillips screwdriver
- Small plastic scribe

System Overview

Inside View — Back



- 1. memory module
- 2. battery bay

- 3. SIM card slot
- 4. coin-cell battery

- 5. storage device
- 6. WWAN card
- 7. WLAN card
- 8. docking station connector

- 9. heatsink
- 10. system fan

Inside View — Front



- 1. I/O board
- 2. speakers
- 3. system board
- 4. display assembly

Removing the SD Card

1. Follow the procedures in *Before Working Inside Your Computer*.
2. Press in on the SD card to release it from the computer.



3. Slide the SD card out of the computer.

Installing the SD Card

1. Slide the SD card into its slot until it clicks into place.
2. Follow the procedures in *After Working Inside Your Computer*.

Removing the Battery

1. Follow the procedures in *Before Working Inside Your Computer*.
2. Slide the release latch to unlock the battery.



3. Remove the battery from the computer.



Installing the Battery

1. Slide the battery into its slot until it clicks into place.
2. Follow the procedures in *After Working Inside Your Computer*.

Removing the Base Cover

1. Follow the procedures in *Before Working Inside Your Computer*.
2. Remove the battery.
3. Remove the screws that secure the base cover to the computer.



4. Lift the base cover to remove it from the computer.

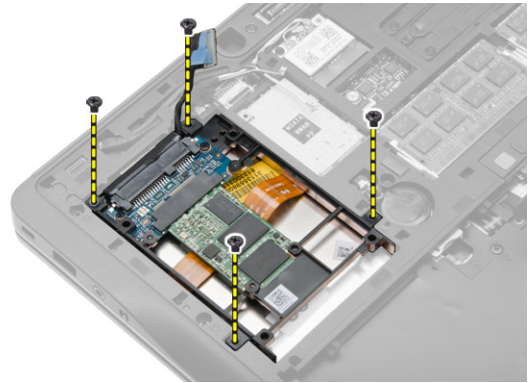
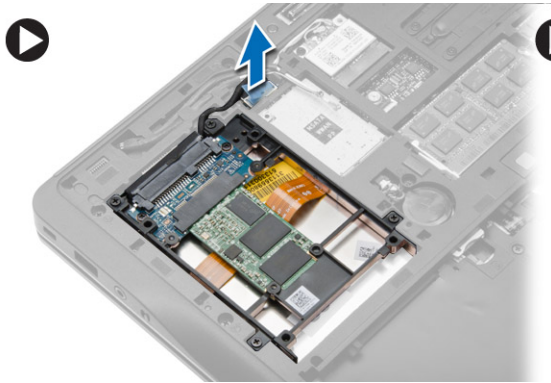


Installing the Base Cover

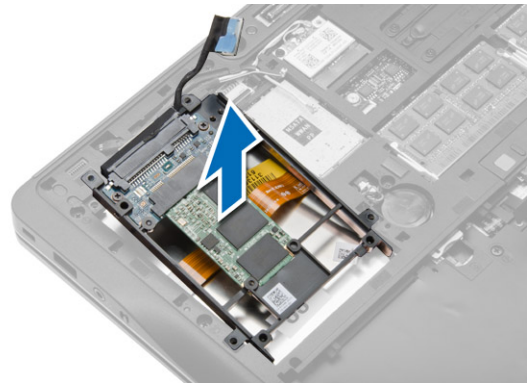
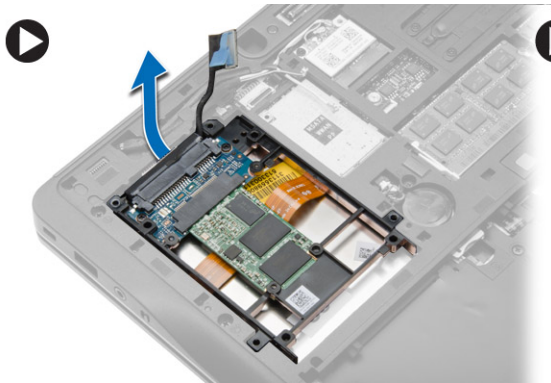
1. Place the base cover to align with the screw holes correctly on the computer.
2. Tighten the screws to secure the base cover to the computer.
3. Install the battery.
4. Follow the procedures in *After Working Inside Your Computer*.

Removing the Hard Drive

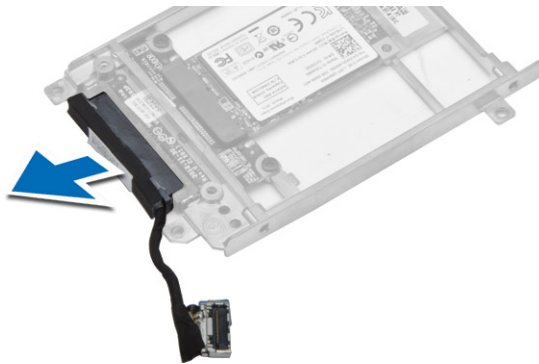
1. Follow the procedures in *Before Working Inside Your Computer*.
2. Remove:
 - a) battery
 - b) base cover
3. Disconnect the hard-drive cable that secures the hard-drive cage to the computer and remove the screws that secures it to the computer.



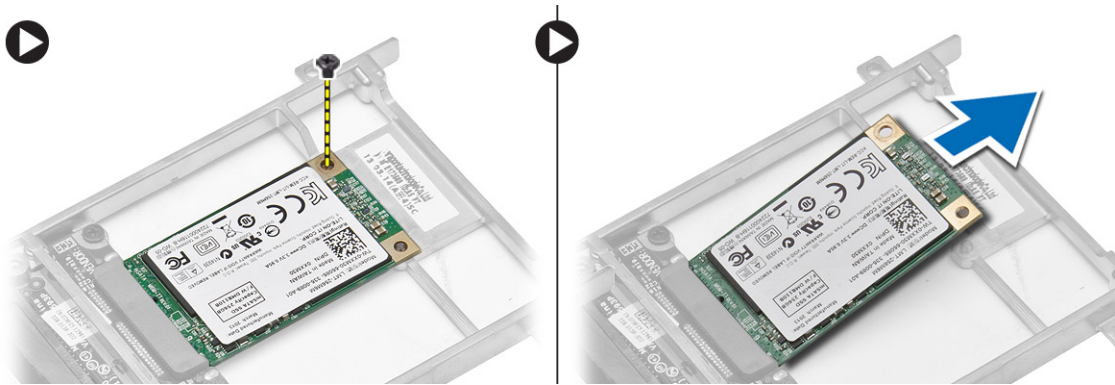
4. Lift the hard-drive cage from the computer.



5. Disconnect the hard-drive cable that secures the hard drive to the hard-drive cage.



6. Remove the screw that secures the hard-drive to the hard-drive cage and lift the hard drive from the hard-drive cage.

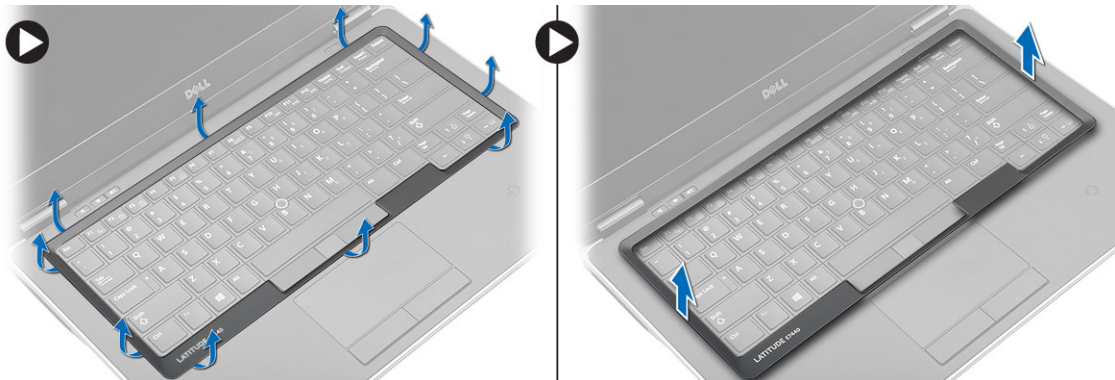


Installing the Hard Drive

1. Slide the hard-drive in its slot in the computer.
2. Tighten the screw that secures the hard-drive bracket to the hard drive.
3. Connect the hard drive cable to the hard-drive cage.
4. Place the hard-drive bracket and tighten the screw to secure the hard drive cage to the computer.
5. Connect the hard-drive cage cable to the computer.
6. Install:
 - a) base cover
 - b) battery
7. Follow the procedures in *After Working Inside Your Computer*.

Removing the Keyboard Trim

1. Follow the procedures in *Before Working Inside Your Computer*.
2. Remove the battery.
3. Using a plastic scribe, pry the keyboard trim to release it from the computer. Lift up to remove the keyboard trim from the computer.



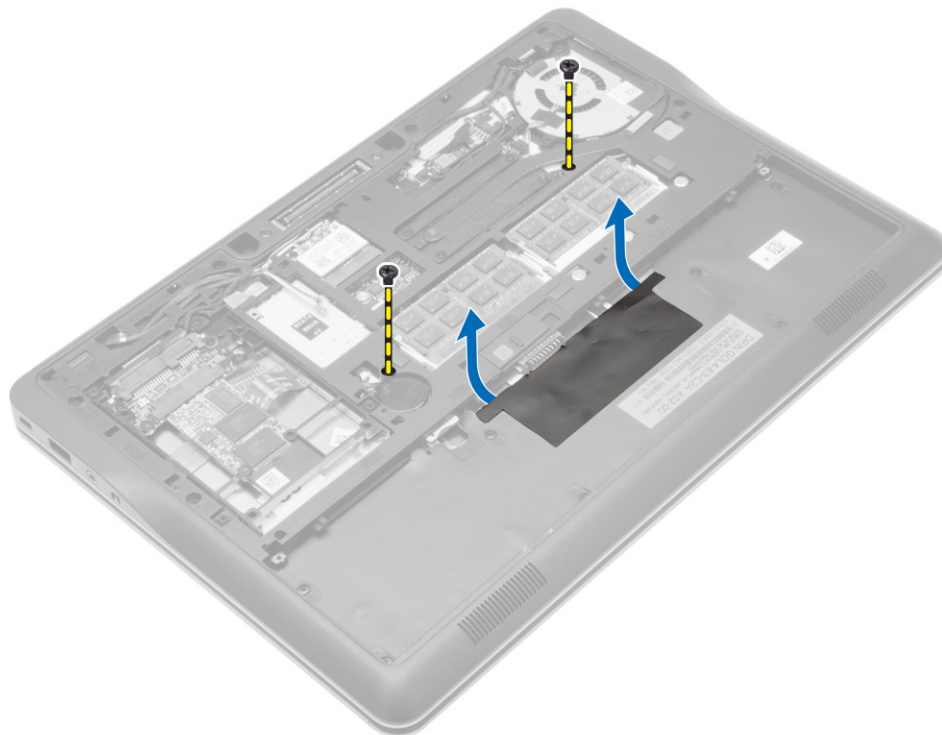
Installing the Keyboard Trim

1. Align the keyboard trim to its slot.
2. Press along the sides of the keyboard trim until it clicks in place.

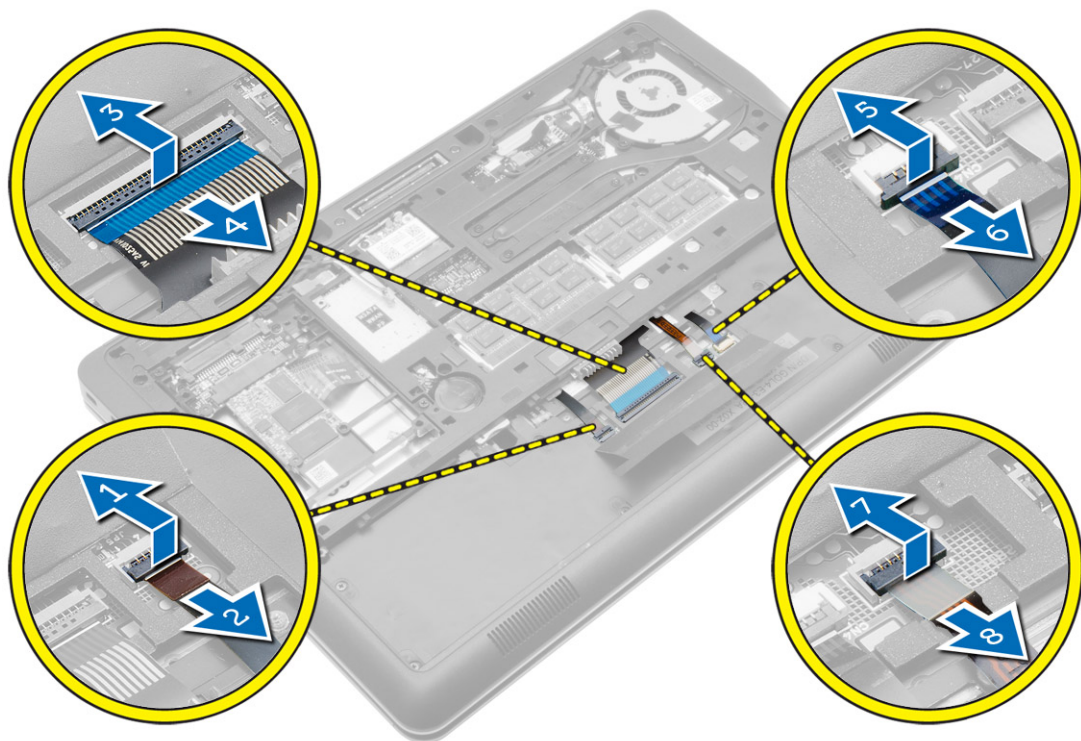
3. Install the battery.
4. Follow the procedures in *After Working Inside Your Computer*.

Removing the Keyboard

1. Follow the procedures in *Before Working Inside Your Computer*.
2. Remove:
 - a) battery
 - b) base cover
 - c) keyboard trim
3. Remove the screws and lift the battery bay of the computer.



4. Perform the following steps as shown in the illustration:
 - a) Lift the keyboard-backlight cable latch [1].
 - b) Remove the cable from the system board [2].
 - c) Lift the trackstick cable latch [3].
 - d) Remove the cable from the system board [4].
 - e) Lift the keyboard cable latch [5].
 - f) Remove the cable from the system board [6].
 - g) Lift the touchpad cable latch [7].
 - h) Remove the cable from the system board [8].



5. Flip the computer and remove the screws that secure the keyboard to the computer. Lift the keyboard from the computer.



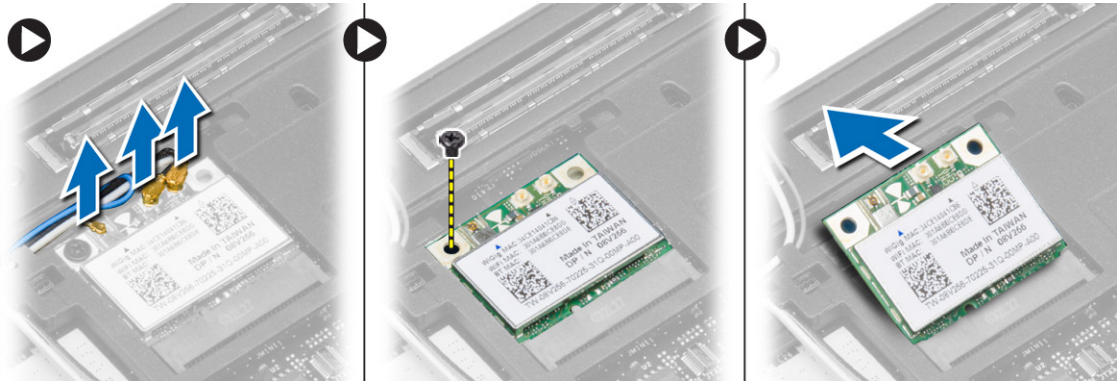
Installing the Keyboard

1. Connect the keyboard cable and secure it to the keyboard using the tape.
2. Connect the keyboard cable to the system board.
3. Slide the keyboard into its compartment and ensure that it clicks into place.
4. Tighten the screws to secure the keyboard on the palmrest.
5. Flip the computer and tighten the screws to secure the keyboard.
6. Install:
 - a) keyboard trim
 - b) base cover

- c) battery
- 7. Follow the procedures in *After Working Inside Your Computer*.

Removing the WLAN Card

1. Follow the procedures in *Before Working Inside Your Computer*.
2. Remove:
 - a) battery
 - b) base cover
3. Disconnect the antenna cables from the WLAN card and remove the screw that secures the WLAN card to the computer. Remove the WLAN card from the computer.

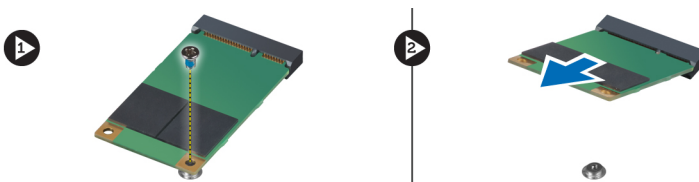


Installing the WLAN Card

1. Insert the WLAN card into its connector at a 45-degree angle into its slot.
2. Tighten the screw to secure the WLAN card to the computer.
3. Connect the antenna cables to their respective connectors marked on the WLAN card.
4. Install:
 - a) base cover
 - b) battery
5. Follow the procedures in *After Working Inside Your Computer*.

Removing the mSATA SSD Card

1. Follow the procedures in *Before Working Inside Your Computer*.
2. Remove:
 - a) battery
 - b) SD card
 - c) base cover
3. Remove the screw that secures the mSATA SSD card and remove the mSATA SSD card from the computer.

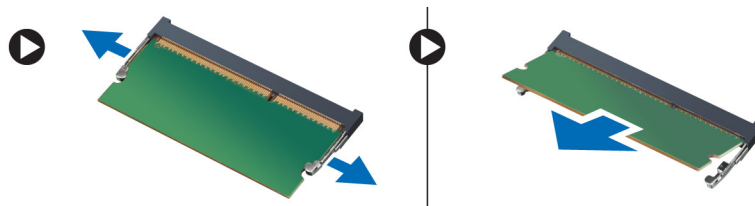


Installing the mSATA SSD Card

1. Place the mSATA SSD card in its slot in the computer.
2. Tighten the screw to secure the mSATA SSD card to the computer.
3. Install:
 - a) base cover
 - b) SD card
 - c) battery
4. Follow the procedures in *After Working Inside Your Computer*.

Removing the Memory Module

1. Follow the procedures in *Before Working Inside Your Computer*.
2. Remove:
 - a) battery
 - b) base cover
3. Pry the securing clips away from the memory module until it pops up. Remove the memory module from its connector on the system board.

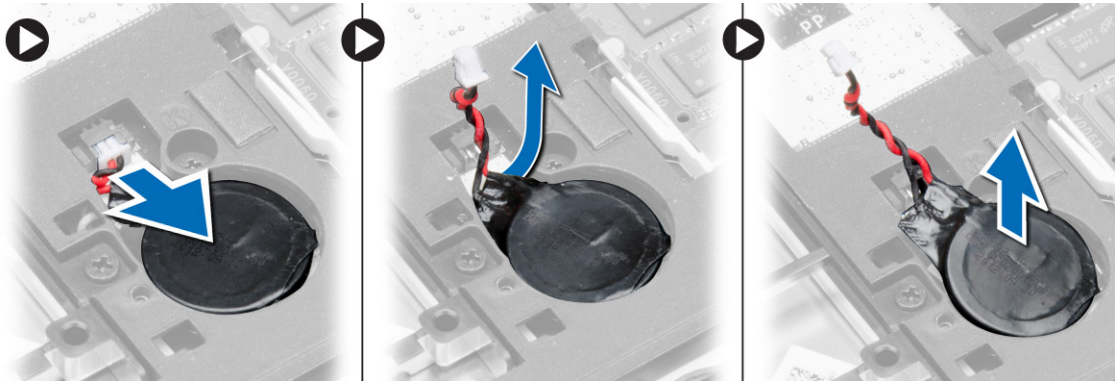


Installing the Memory Module

1. Insert the memory module into the socket.
2. Press the retention clips to secure the memory module to the system board.
3. Install:
 - a) base cover
 - b) battery
4. Follow the procedures in *After Working Inside Your Computer*.

Removing the Coin-Cell Battery

1. Follow the procedures in *Before Working Inside Your Computer*.
2. Remove:
 - a) battery
 - b) base cover
3. Slide the coin-cell battery cable and disconnect from the system board. Remove the coin-cell battery from the computer.

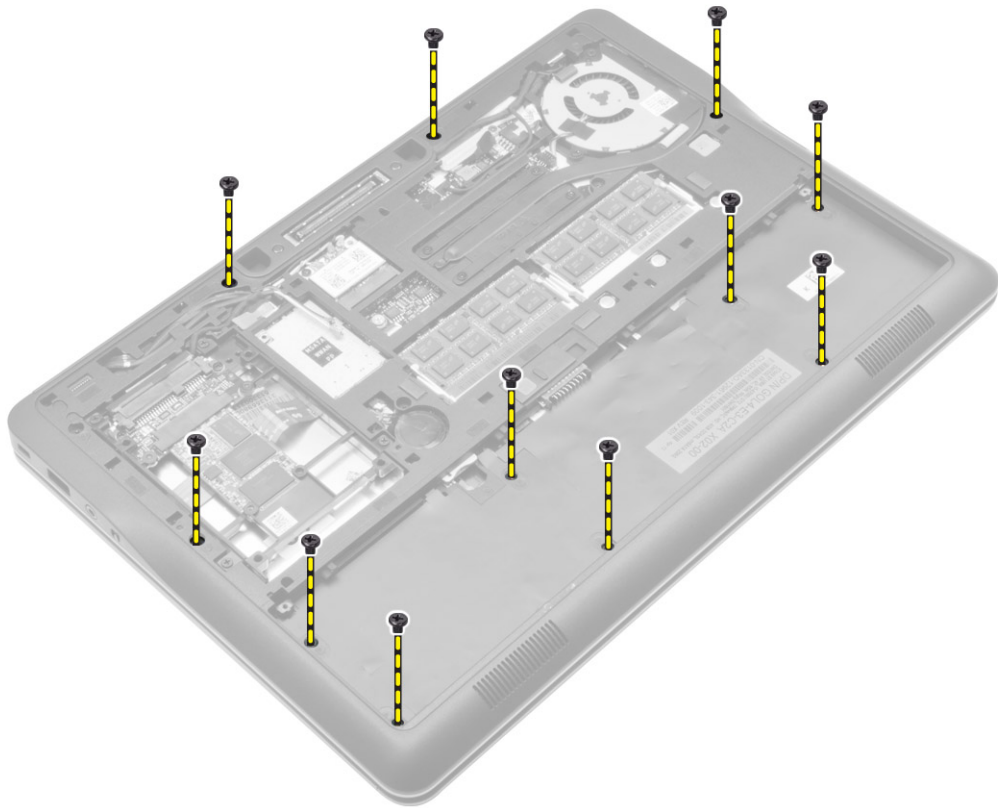


Installing the Coin-Cell Battery

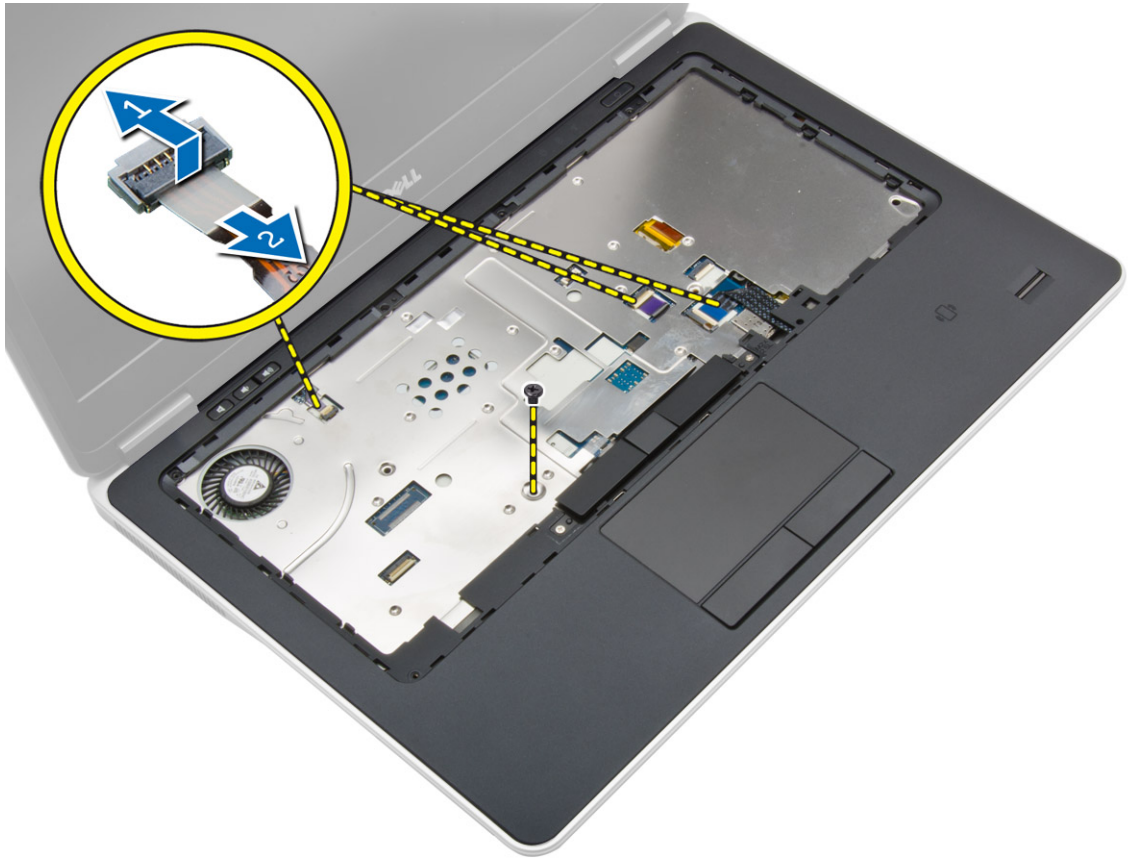
1. Place the coin-cell battery in its slot.
2. Connect the coin-cell battery cable.
3. Install:
 - a) base cover
 - b) battery
4. Follow the procedures in *After Working Inside Your Computer*.

Removing the Palmrest

1. Follow the procedures in *Before Working Inside Your Computer*.
2. Remove:
 - a) SD card
 - b) battery
 - c) base cover
 - d) hard drive
 - e) keyboard trim
 - f) keyboard
3. Remove the screws that secure the palmrest assembly to the computer.



4. Perform the following steps as shown in the illustration:
 - a) Lift the latches [1].
 - b) Disconnect LED-board, touchpad and power LED cables from the computer. [2].



5. Lift up the palmrest away from the computer.

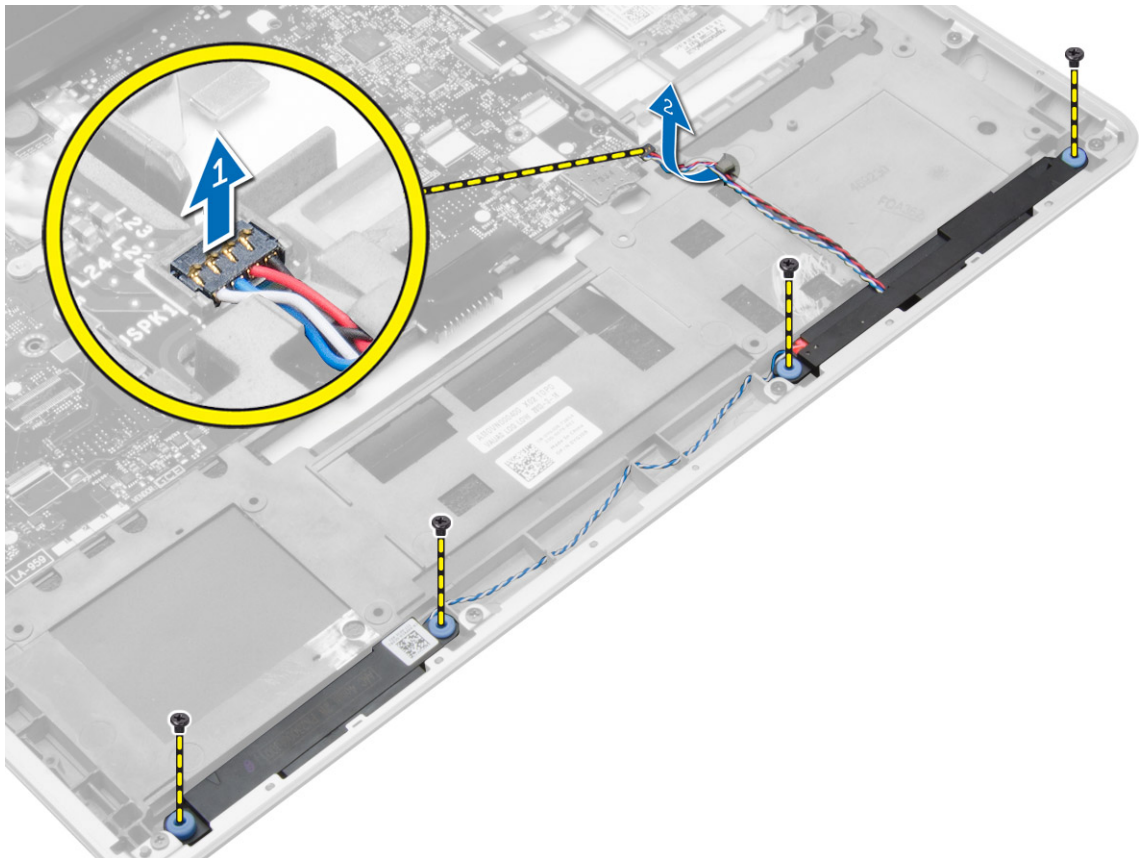


Installing the Palmrest

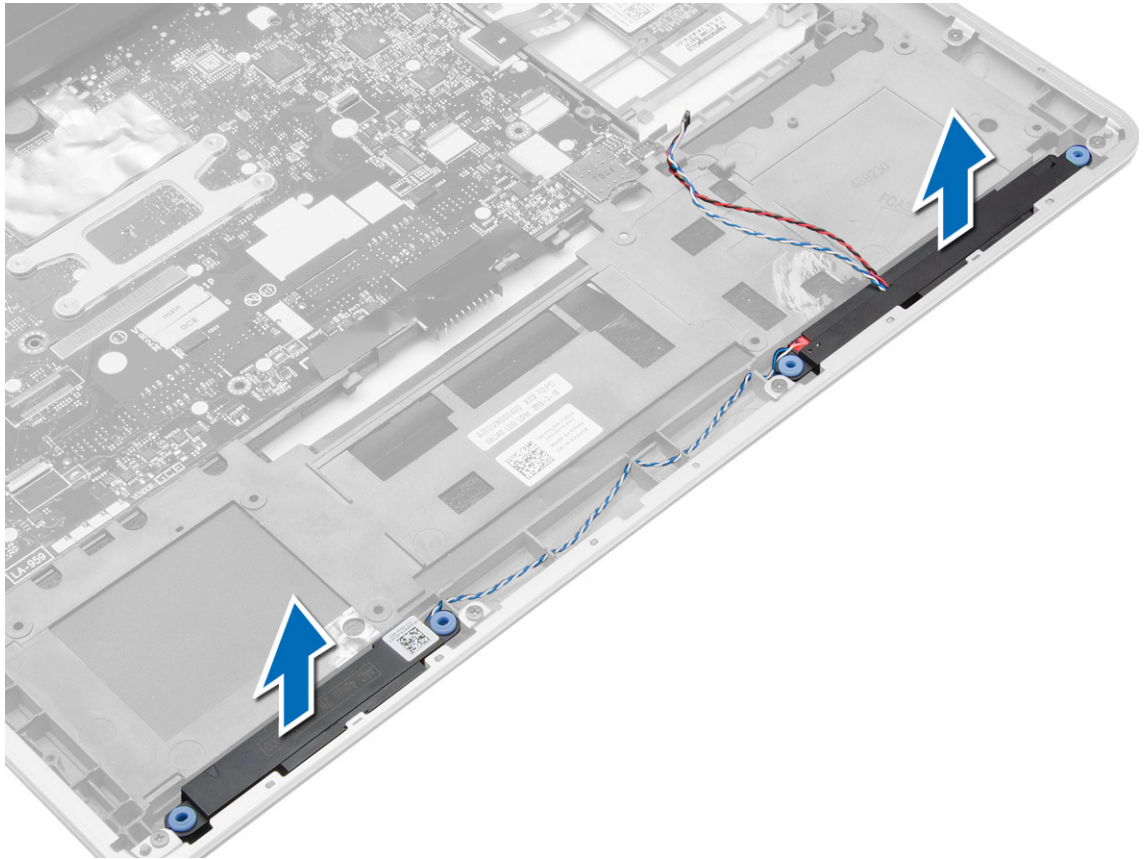
1. Align the palm rest assembly to its original position in the computer and snap it into place.
2. Connect the following cables to the system board:
 - a) power LED cable
 - b) touchpad cable
 - c) LED-board cable
3. Tighten the screws to secure the palmrest assembly to the front of the computer.
4. Tighten the screws to secure the palmrest assembly to the base of the computer.
5. Install:
 - a) keyboard
 - b) keyboard trim
 - c) hard drive
 - d) base cover
 - e) battery
 - f) SD card
6. Follow the procedures in *After Working Inside Your Computer*.

Removing the Speakers

1. Follow the procedures in *Before Working Inside Your Computer*.
2. Remove:
 - a) SD card
 - b) battery
 - c) base cover
 - d) hard drive
 - e) keyboard trim
 - f) keyboard
 - g) palmrest
3. Perform the following steps as shown in the illustration:
 - a) Remove the screws that secure the speakers to the computer.
 - b) Disconnect the cable [1].
 - c) Unroute the cable from the system board [2].



4. Remove the speakers from the computer.



Installing the Speakers

1. Align the speakers to their original position and tighten the screws to secure the speakers to the computer.
2. Route the speaker cable on the computer and connect it to the system board.
3. Install:
 - a) palmrest
 - b) keyboard
 - c) keyboard trim
 - d) hard drive
 - e) base cover
 - f) battery
 - g) SD card
4. Follow the procedures in *After Working Inside Your Computer*.

Removing the Display-Hinge Cover

1. Follow the procedures in *Before Working Inside Your Computer*.
2. Remove the battery.
3. Remove the screws that secure the display-hinge cover to the computer. Lift the display-hinge cover.

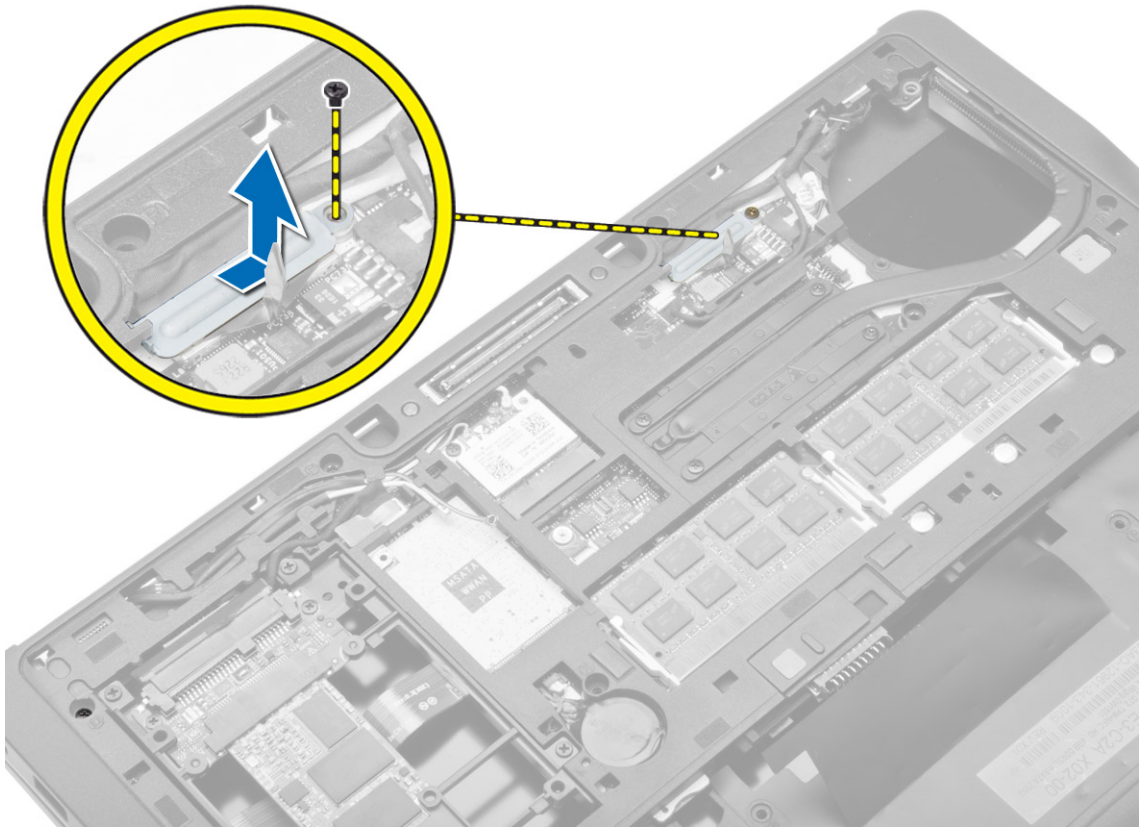


Installing the Display-Hinge Cover

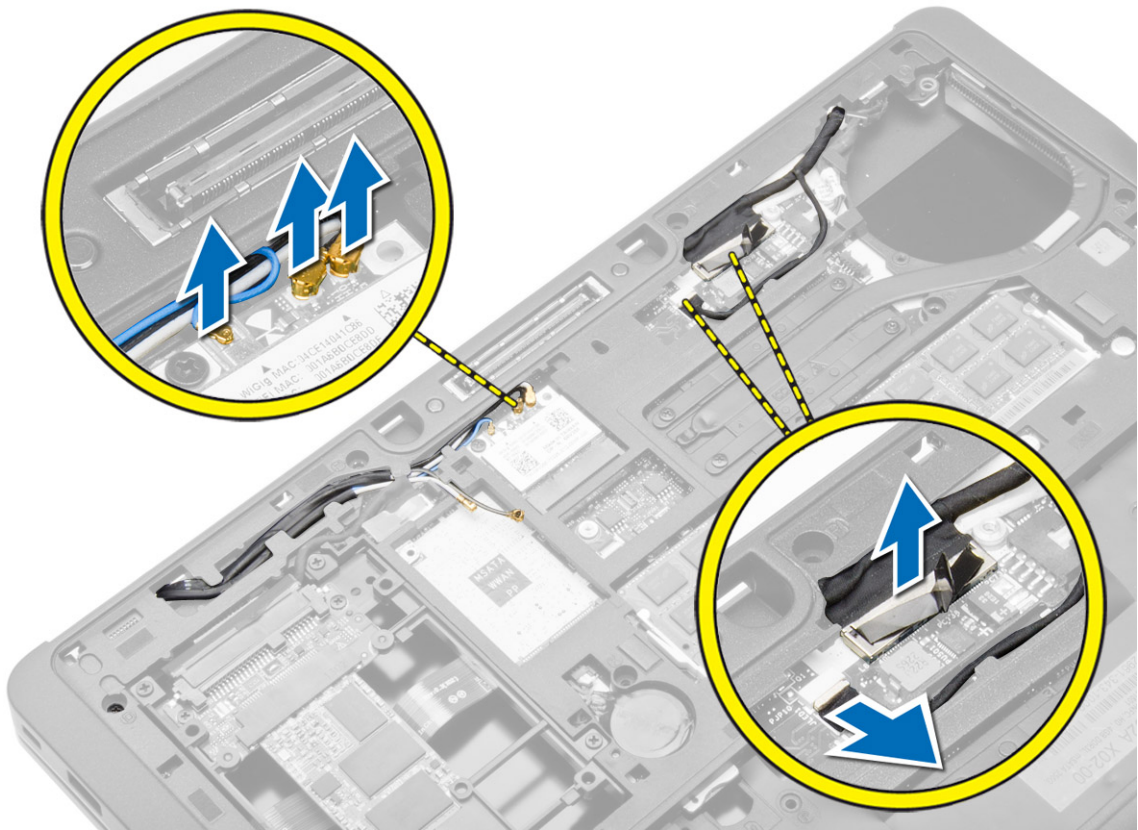
1. Place the display-hinge cover and tighten the screws to secure the display-hinge cover to the computer.
2. Install battery.
3. Follow the procedures in *After Working Inside Your Computer*.

Removing the Display Assembly

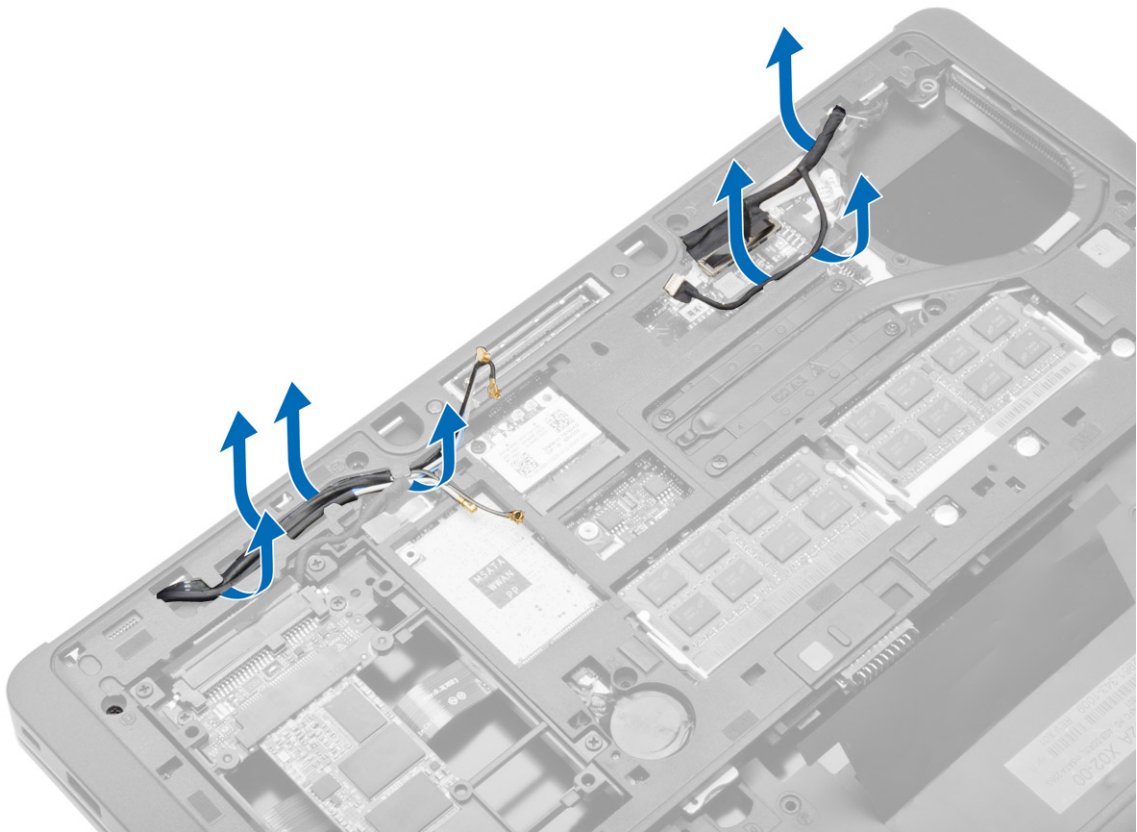
1. Follow the procedures in *Before Working Inside Your Computer*.
2. Remove:
 - a) battery
 - b) SD card
 - c) base cover
 - d) keyboard
 - e) palmrest
3. Remove the screw that secures the display assembly to the computer.



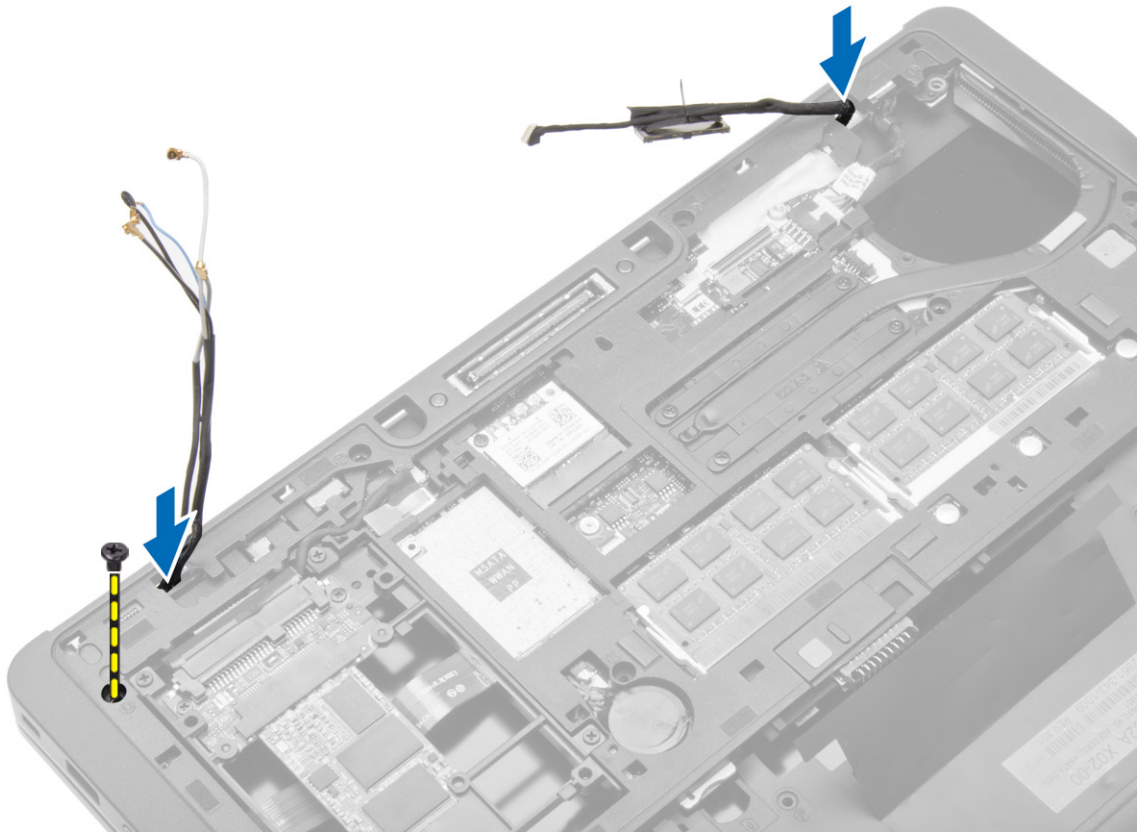
4. Disconnect the LVDS and camera cable from the system board. Disconnect the antenna cables from the wireless solution.



5. Unroute the cables from the slot.



6. Remove the screw and pull the antenna cables from the holes on the base chassis that secure the display assembly to the computer.



7. Remove the screws that secure the display assembly to the computer and lift the display assembly from the computer.



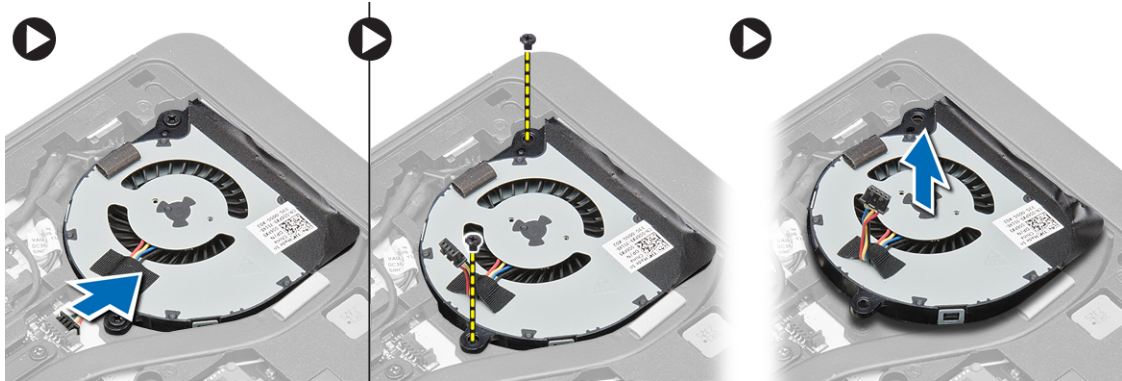
Installing the Display Assembly

1. Insert the LVDS and wireless antenna cables through the holes on the base chassis and connect them.
2. Place the display assembly onto the computer.
3. Tighten the screws on both sides to secure the display assembly.
4. Route the antenna and the LVDS cables through the routing channel.
5. Connect the LVDS and camera cable to the computer.
6. Connect the antenna cables to the wireless solution.
7. Install:
 - a) palmrest assembly
 - b) keyboard
 - c) base cover
 - d) SD card
 - e) battery
8. Follow the procedures in *After Working Inside Your Computer*.

Removing the System Fan

1. Follow the procedures in *Before Working Inside Your Computer*.
2. Remove:

- a) battery
 - b) SD card
 - c) base cover
3. Disconnect the system fan cable. Remove the screws that secure the system fan to the computer and remove the system fan from the computer.



Installing the System Fan

1. Align the system fan in its place on the system board.
2. Tighten the screws that secure the system fan to the computer.
3. Connect the system-fan cable to the system board.
4. Install:
 - a) base cover
 - b) SD card
 - c) battery
5. Follow the procedures in *After Working Inside Your Computer*.

Removing the Heatsink

1. Follow the procedures in *Before Working Inside Your Computer*.
2. Remove:
 - a) SD card
 - b) battery
 - c) base cover
 - d) hard drive
 - e) keyboard trim
 - f) keyboard
 - g) palmrest
 - h) speaker
 - i) display-hinge cover
 - j) display assembly
 - k) system board
3. Remove the screws that secure the heatsink to the system board. Lift the heatsink from the system board.



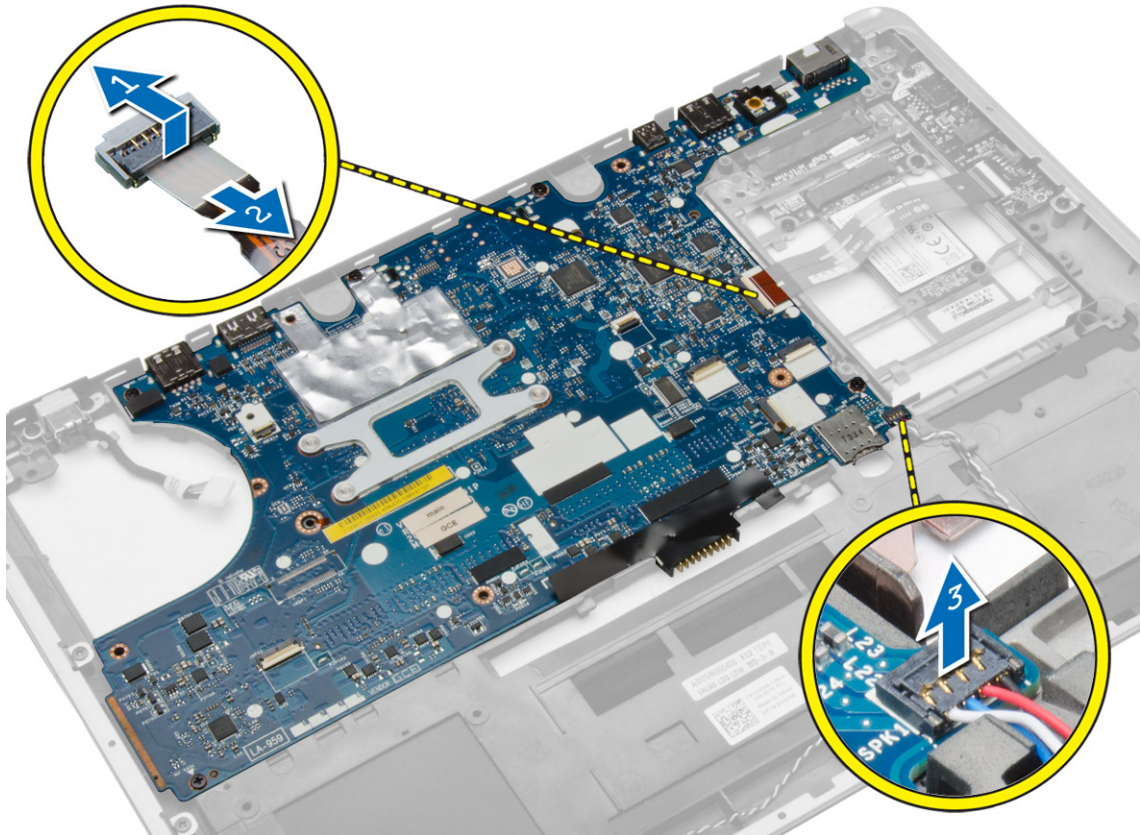
Installing the Heatsink

1. Place the heatsink into its original position on the system board.
2. Tighten the screws to secure the heatsink to the system board.
3. Install:
 - a) system board
 - b) display assembly
 - c) display-hinge cover
 - d) speaker
 - e) palmrest
 - f) keyboard
 - g) keyboard trim
 - h) hard drive
 - i) base cover
 - j) battery
 - k) SD card
4. Follow the procedures in *After Working Inside Your Computer*.

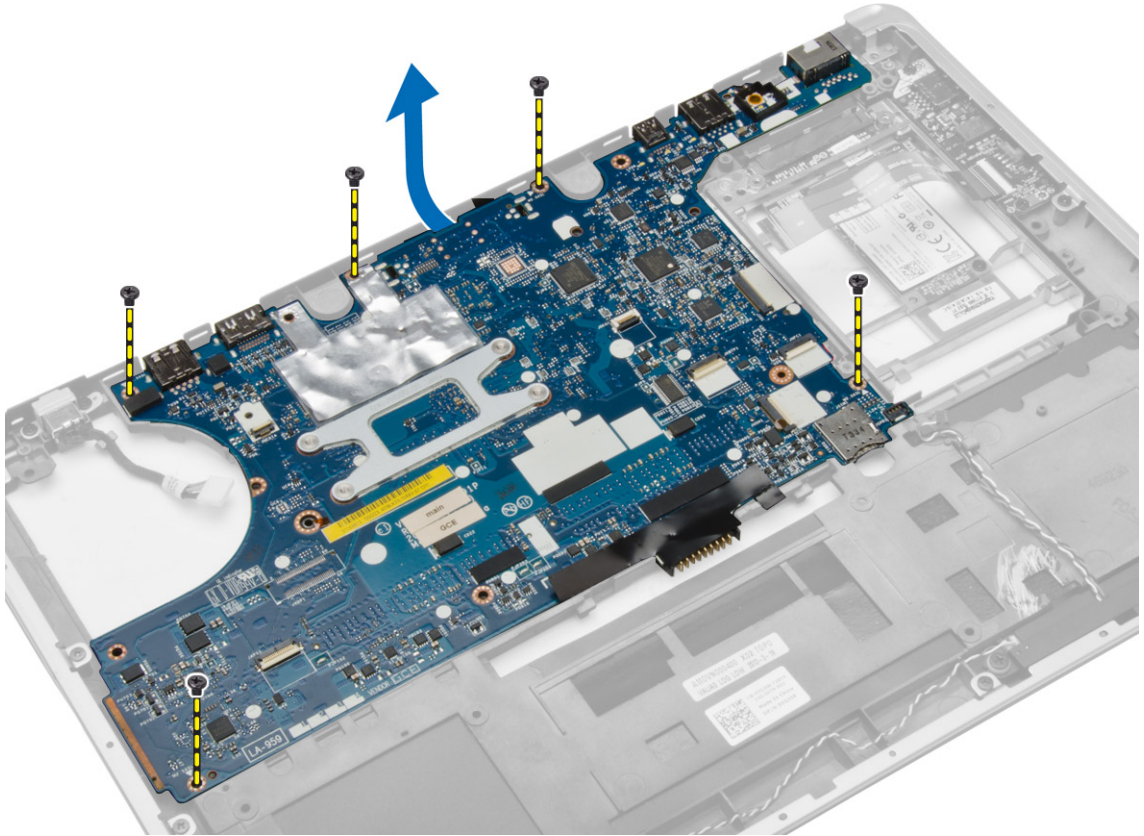
Removing the System Board

1. Follow the procedures in *Before Working Inside Your Computer*.
2. Remove:
 - a) SD card
 - b) battery
 - c) base cover
 - d) hard drive
 - e) keyboard trim
 - f) keyboard
 - g) palmrest
 - h) speaker
 - i) display-hinge cover
 - j) display assembly
3. Perform the following steps as shown in the illustration: Disconnect the I/O and speaker cables from the system board.
 - a) Lift the I/O latch [1].

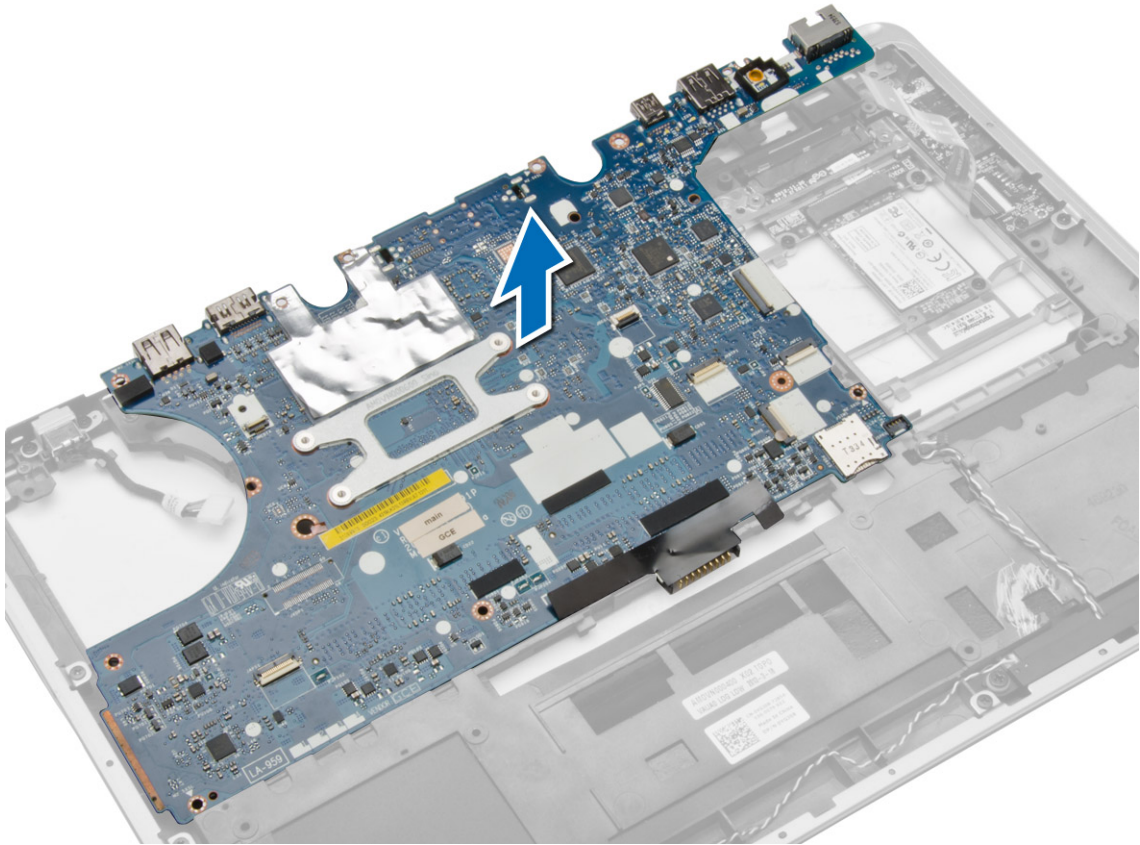
- b) Disconnect the cable from the system board [2].
- c) Disconnect the speaker cable from system board [3].



4. Remove the screws that secure the system board to the computer. Lift the left edge of system board partially to a 45-degree angle.



5. Remove the system board from the computer.

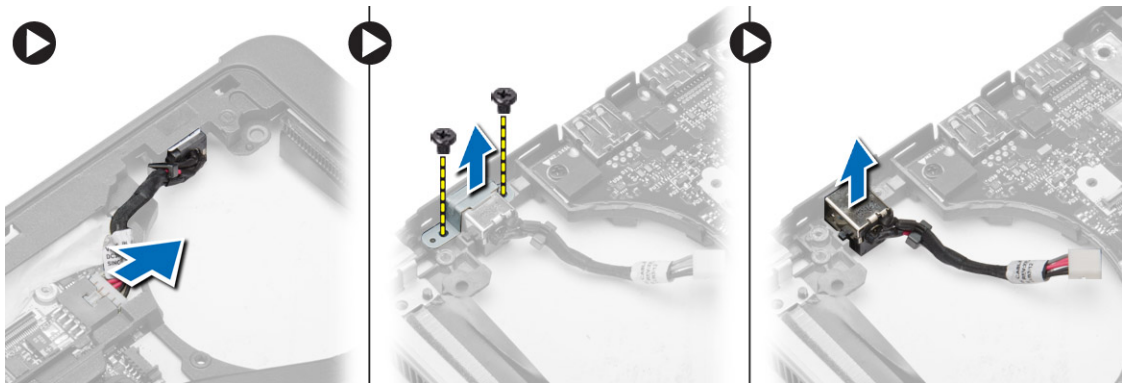


Installing the System Board

1. Align the system board in its place on the computer.
2. Tighten the screws to secure the system board.
3. Connect the following cables to the system board:
 - a) speaker
 - b) I/O cable
4. Install:
 - a) display assembly
 - b) display-hinge cover
 - c) speaker
 - d) palmrest
 - e) keyboard
 - f) keyboard trim
 - g) hard drive
 - h) base cover
 - i) battery
 - j) SD card
5. Follow the procedures in *After Working Inside Your Computer*.

Removing the Power Connector

1. Follow the procedures in *Before Working Inside Your Computer*.
2. Remove:
 - a) SD card
 - b) battery
 - c) base cover
 - d) keyboard
 - e) palmrest
 - f) system fan
 - g) heatsink
 - h) speakers
3. Disconnect the power-connector cable from the system board remove the screw that secures to the computer. Remove the power connector.



Installing the Power Connector

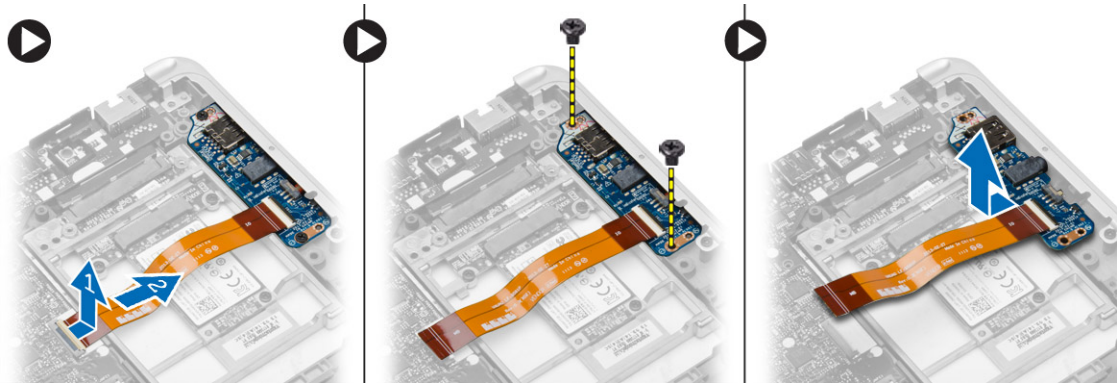
1. Insert the power connector in its slot.
2. Connect the power connector to the system board.
3. Tighten the screw that secures the power connector to the system board.
4. Install:
 - a) speakers
 - b) heatsink
 - c) system fan
 - d) palmrest
 - e) keyboard
 - f) base cover
 - g) battery
 - h) SD card
5. Follow the procedures in *After Working Inside Your Computer*.

Removing the I/O Board

1. Follow the procedures in *Before Working Inside Your Computer*.
2. Remove:

- a) SD card
- b) battery
- c) base cover
- d) hard drive
- e) keyboard trim
- f) keyboard
- g) palmrest
- h) speaker
- i) display-hinge cover
- j) display assembly
- k) system board

3. Disconnect the I/O cable from the system board remove the screw that secures the I/O board to the computer. Remove the I/O board from the computer.

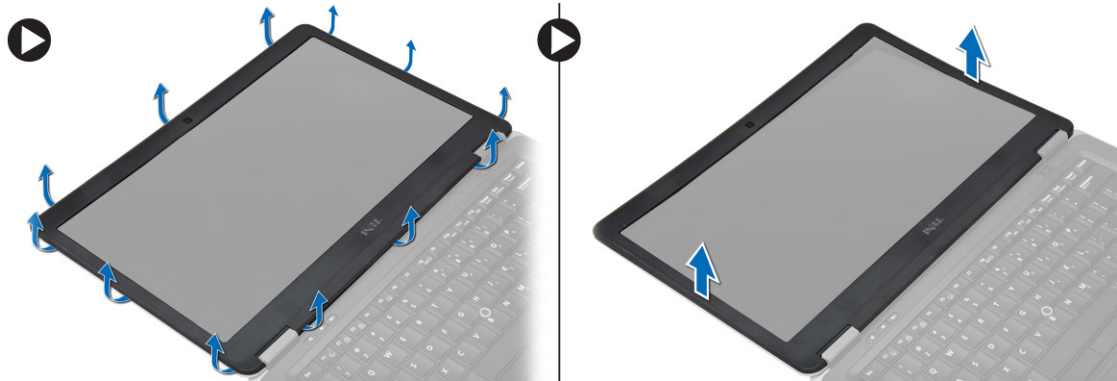


Installing the I/O Board

1. Place the I/O board in its slot and snap it in place.
2. Tighten the screws to secure the I/O board.
3. Connect the I/O cable to the system board.
4. Install:
 - a) system board
 - b) display assembly
 - c) display-hinge cover
 - d) speaker
 - e) palmrest
 - f) keyboard
 - g) keyboard trim
 - h) hard drive
 - i) base cover
 - j) battery
 - k) SD card
5. Follow the procedures in *After Working Inside Your Computer*.

Removing the Display Bezel

1. Follow the procedures in *Before Working Inside Your Computer*.
2. Remove the battery.
3. Pry the edges of the display bezel. Remove the display bezel from the display assembly.

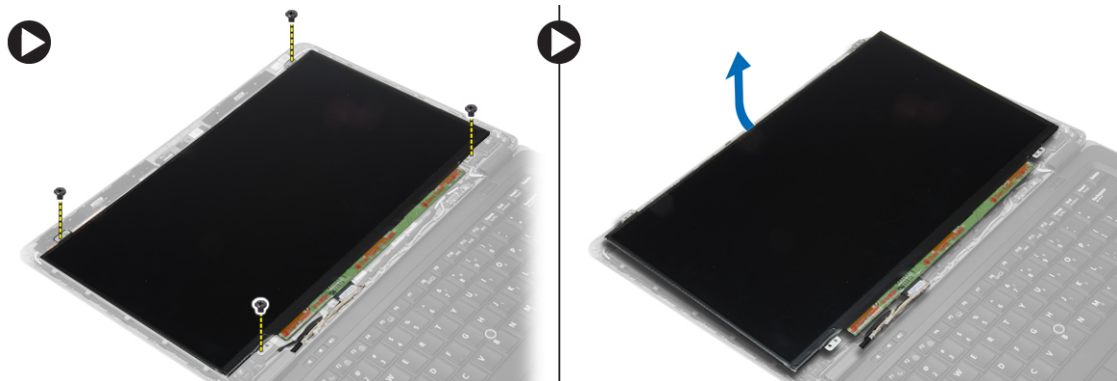


Installing the Display Bezel

1. Align the display bezel in place and snap it in place.
2. Align the hinge covers on display assembly and snap it in place.
3. Install the battery
4. Follow the procedures in *After Working Inside Your Computer*.

Removing the Display Panel

1. Follow the procedures in *Before Working Inside Your Computer*.
2. Remove:
 - a) battery
 - b) display bezel
3. Remove the screws that secure the display panel to the display assembly. Lift the display panel over.



4. Perform the following steps as shown in the illustration:
 - a) Peel the LVDS cable connector tape [1].

- b) Disconnect the LVDS cable from the display panel [2].
- c) Remove the display panel from the display assembly [3].

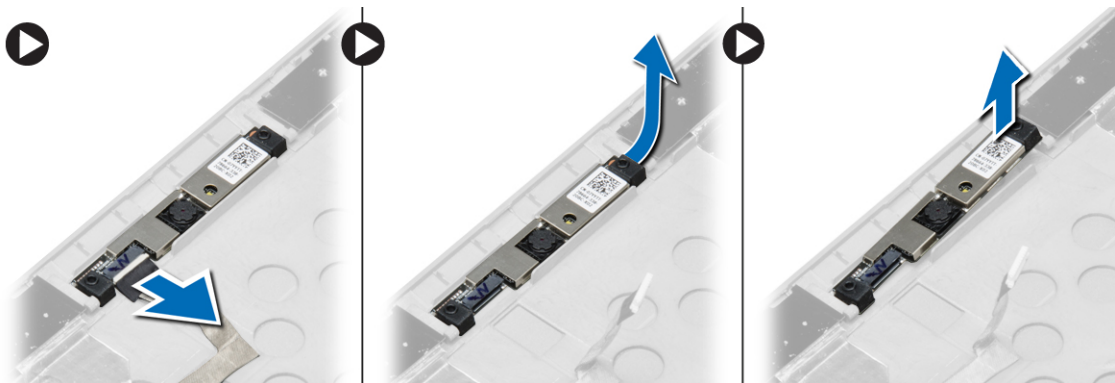


Installing the Display Panel

1. Connect the display cable (LVDS cable) to its connector on the display panel.
2. Place the display panel to its original position on the display assembly.
3. Tighten the screws to secure the display panel to the display assembly.
4. Install:
 - a) display bezel
 - b) battery
5. Follow the procedures in *After Working Inside Your Computer*.

Removing the Camera

1. Follow the procedures in *Before Working Inside Your Computer*.
2. Remove:
 - a) battery
 - b) display bezel
 - c) display assembly
3. Disconnect the camera cable from the module. Lift and remove the camera from the display assembly.



Installing the Camera

1. Install the camera into its slot on the display panel.
2. Connect the camera cable to the camera.
3. Install:
 - a) display assembly
 - b) display bezel
 - c) battery
4. Follow the procedures in *After Working Inside Your Computer*.

Docking Port Information

The docking port is used for connecting the laptop to a docking station (optional).



1. Docking Port

System Setup

Boot Sequence

Boot Sequence allows you to bypass the System Setup-defined boot device order and boot directly to a specific device (for example: optical drive or hard drive). During the Power-on Self Test (POST), when the Dell logo appears, you can:

- Access System Setup by pressing <F2> key
- Bring up the one-time boot menu by pressing <F12> key

The one-time boot menu displays the devices that you can boot from including the diagnostic option. The boot-menu options are:

- Removable Drive (if available)
- STXXXX Drive



NOTE: XXX denotes the SATA drive number.

- Optical Drive
- Diagnostics



NOTE: Choosing Diagnostics, will display the **ePSA diagnostics** screen.

The boot sequence screen also displays the option to access the System Setup screen.


Navigation Keys

The following table displays the system setup navigation keys.



NOTE: For most of the system setup options, changes that you make are recorded but do not take effect until you restart the system.

Table 1. Navigation Keys

Keys	Navigation
Up arrow	Moves to the previous field.
Down arrow	Moves to the next field.
<Enter>	Allows you to select a value in the selected field (if applicable) or follow the link in the field.
Spacebar	Expands or collapses a drop-down list, if applicable.
<Tab>	Moves to the next focus area.
	 NOTE: For the standard graphics browser only.
<Esc>	Moves to the previous page till you view the main screen. Pressing <Esc> in the main screen displays a message that prompts you to save any unsaved changes and restarts the system.

Keys	Navigation
<F1>	Displays the System Setup help file.

System Setup Options




 **NOTE:** Depending on your computer and its installed devices, the items listed in this section may or may not appear.

Table 2. General

Option	Description
System Information	<p>This section lists the primary hardware features of your computer.</p> <ul style="list-style-type: none"> • System Information: Displays BIOS Version, Service Tag, Asset Tag, Ownership Tag, Ownership Date, Manufacture Date, and the Express Service Code. • Memory Information: Displays Memory Installed, Memory Available, Memory Speed, Memory Channels Mode, Memory Technology, DIMM A Size, DIMM B Size, • Processor Information: Displays Processor Type, Core Count, Processor ID, Current Clock Speed, Minimum Clock Speed, Maximum Clock Speed, Processor L2 Cache, Processor L3 Cache, HT Capable, and 64-Bit Technology. • Device Information: Displays Primary Hard Drive, Fixed bay Device, System eSATA Device, Dock eSATA Device, LOM MAC Address, Video Controller, Video BIOS Version, Video Memory, Panel Type, Native Resolution, Audio Controller, Modem Controller, Wi-Fi Device, WiGig Device, Cellular Device, Bluetooth Device.
Battery Information	Displays the battery status and the type of AC adapter connected to the computer
Boot Sequence	<p>Allows you to change the order in which the computer attempts to find an operating system.</p> <ul style="list-style-type: none"> • Diskette Drive • Internal HDD • USB Storage Device • CD/DVD/CD-RW Drive • Onboard NIC
Advance Boot Option	<p>This option is required for Legacy boot mode. This option is not allowed if Secure Boot is enabled.</p>

Option	Description
	<ul style="list-style-type: none"> • Enable Legacy Option ROMs — This option is disabled by default.
Date/Time	Allows you to set the date and time.

Table 3. System Configuration

Option	Description
Integrated NIC	<p>Allows you to configure the integrated network controller. The options are:</p> <ul style="list-style-type: none"> • Disabled • Enabled • Enabled w/PXE: This option is enabled by default. • Enable UEFI Network Stack: This allows you to enable UEFI Networking Protocols in pre-OS and early OS networking environment.
Parallel Port	<p>Allows you to define and set how the parallel port on the docking station operates. You can set the parallel port to:</p> <ul style="list-style-type: none"> • Disabled • AT • PS2 • ECP (Latitude 7440)
Serial Port	<p>Identifies and defines the serial port settings. You can set the serial port to:</p> <ul style="list-style-type: none"> • Disabled • COM1 (Default Setting) • COM2 • COM3 • COM4 <p> NOTE: The operating system may allocate resources even if the setting is disabled.</p>
SATA Operation	<p>Allows you to configure the internal SATA hard-drive controller. The options are:</p> <ul style="list-style-type: none"> • Disabled • AHCI • RAID On (Default Setting) <p> NOTE: SATA is configured to support RAID mode.</p>
Drives	Allows you to configure the SATA drives on board. The options are:

Option	Description
	<ul style="list-style-type: none"> • SATA-0 • SATA-1 • SATA-2 • SATA-3 <p>Default Setting: All drives are enabled.</p>
SMART Reporting	<p>This field controls if the hard drive errors for the integrated drives are reported during system startup. This technology is part of the SMART (Self Monitoring Analysis and Reporting Technology) specification.</p> <ul style="list-style-type: none"> • Enable SMART Reporting - This option is disabled by default.
USB Configuration	<p>Allows you to define the USB configuration. The options are:</p> <ul style="list-style-type: none"> • Enable Boot Support • Enable External USB Port • Enable USB3.0 Controller <p>Default Setting: all the options are enabled.</p>
USB PowerShare	<p>Allows you to configure the behavior of the USB PowerShare feature. The option is disabled by default.</p> <ul style="list-style-type: none"> • Enable USB PowerShare
Audio	<p>Allows you to enable or disable the integrated audio controller.</p> <ul style="list-style-type: none"> • Enable Audio This option is enabled by default.
Keyboard Illumination	<p>Allows you to choose the operating mode of the keyboard illumination feature. The options are:</p> <ul style="list-style-type: none"> • Disabled (Default Setting) • Level is 25% • Level is 50% • Level is 75% • Level is 100%
Unobtrusive Mode	<p>Allows you to set the mode that will turn off all light and sound emissions from the system. The option is disabled by default.</p> <ul style="list-style-type: none"> • Enable Unobtrusive Mode
Miscellaneous Devices	<p>Allows you enable or disable the various on board devices. The options are:</p>



Option	Description
	<ul style="list-style-type: none"> • Enable Microphone • Enable Hard Drive Free Fall Protection • Enable Camera • Enable Media Card • Disable Media Card <p>Default Setting: All devices are enabled</p>

Table 4. Video

Option	Description
LCD Brightness	Allows you to set the display brightness depending up on the power source (On Battery and On AC).

Table 5. Security

Option	Description
Admin Password	<p>This field lets you set, change, or delete the administrator (admin) password (sometimes called the setup password). The admin password enables several security features.</p> <ul style="list-style-type: none"> • Enter the old password • Enter the new password • Confirm the new password <p>Default Setting: Not set</p>
System Password	<p>Allows you to set, change or delete the system password.</p> <ul style="list-style-type: none"> • Enter the old password • Enter the new password • Confirm the new password <p>Default Setting: Not set</p>
Internal HDD-1 Password	<p>Allows you to set, change or delete the administrator password. The drive does not have a password set by default.</p> <ul style="list-style-type: none"> • Enter the old password • Enter the new password • Confirm the new password <p>Default Setting: Not set</p>
Strong Password	<p>Allows you to enforce the option to always set strong passwords. Default Setting: Enable Strong Password is not selected.</p>
Password Configuration	You can define the length of your password. Min = 4 , Max = 32
Password Bypass	<p>Allows you to enable or disable the permission to bypass the System and the Internal HDD password, when they are set. The options are:</p> <ul style="list-style-type: none"> • Disabled (Default Setting) • Reboot bypass

Option	Description
Password Change	Allows you to enable the disable permission to the System and Hard Drive passwords when the admin password is set. Default Setting: Allow Non-Admin Password Changes is not selected
Non-Admin Setup Changes	Allows you to determine whether changes to setup option are permitted when an administrator password is set. The option is disabled. <ul style="list-style-type: none"> Allows Wireless Switch Changes
TPM Security	Allows you to enable the Trusted Platform Module (TPM) during POST. Default Setting: The option is disabled.
Computrace	Allows you to activate or disable the optional Computrace software The options are: <ul style="list-style-type: none"> Deactivate (Default Setting) Disable Activate <p> NOTE: The Activate and Disable options will permanently activate or disable the feature and no further changes will be allowed</p>
CPU XD Support	Allows you to enable the Execute Disable mode of the processor. Default Setting: Enable CPU XD Support
OROM Keyboard Access	Allows you to set access to enter the Option ROM Configuration screens using hotkeys during boot process. The options are: <ul style="list-style-type: none"> Enable (Default Setting) One Time Enable Disable
Admin Setup Lockout	Allows you to prevent users from entering Setup when an Administrator password is set. Default Setting: Disabled
Table 6. Secure Boot	
Secure Boot Enable	Allows you to enable or disable Secure Boot feature <ul style="list-style-type: none"> Disabled Enabled(Default Setting) <p> NOTE: For enable system needs to be UEFI boot mode and enable legacy option ROMs to be turned off.</p>
Expert key Management	Allows you to manipulate the security key databases only if the system is in Custom Mode. The Enable Custom Mode option is disabled by default. The options are: <ul style="list-style-type: none"> PK KEK db dbx

If you enable the Custom Mode, the relevant options for PK, KEK, db, and dbx appear. The options are:

- Save to File- Saves the key to a user-selected file
- Replace from File- Replaces the current key with a key from a user-selected file
- Append from File- Adds a key to the current database from a user-selected file
- Delete- Deletes the selected key
- Reset All Keys- Resets to default setting
- Delete All Keys- Deletes all the keys



NOTE: If you disable the Custom Mode, all the changes made will be erased and the keys will restore to default settings.

Table 7. Performance

Option	Description
Multi Core Support	<p>This field specifies whether the process will have one or all cores enabled. The performance of some applications will improve with the additional cores. This option is enabled by default. Allows you to enable or disable multi-core support for the processor. The options are:</p> <ul style="list-style-type: none"> • All (Default Setting) • 1 • 2
Intel SpeedStep	<p>Allows you to enable or disable the Intel SpeedStep feature.</p> <p>Default Setting: Enable Intel SpeedStep</p>
C States Control	<p>Allows you to enable or disable the additional processor sleep states.</p> <p>Default Setting: The option C states is enabled.</p>
Intel TurboBoost	<p>Allows you to enable or disable the Intel TurboBoost mode of the processor.</p> <p>Default Setting: Enable Intel TurboBoost</p>
Hyper-Thread Control	<p>Allows you to enable or disable the HyperThreading in the processor.</p> <p>Default Setting: Enabled</p>
Rapid Start Technology	<p>The Intel Rapid Start feature might improve the battery life by automatically putting the system into a low power state during sleep after a user specified time. The options are enabled by default:</p> <ul style="list-style-type: none"> • Intel Rapid Start Feature • Transition to Rapid Start when using Timer


Option	Description
	The Rapid Start Timer value can be configured to put the system into Rapid State as per requirement.

Table 8. Power Management

Option	Description
AC Behavior	<p>Allows the computer to power-on automatically, when AC adapter is plugged. The option is disabled.</p> <ul style="list-style-type: none"> Wake on AC
Auto On Time	<p>Allows you to set the time at which the computer must turn on automatically. The options are:</p> <ul style="list-style-type: none"> Disabled (Default Setting) Every Day Weekdays Select Days
USB Wake Support	<p>Allows you to enable the USB devices to wake the computer from standby mode. The option is disabled</p> <ul style="list-style-type: none"> Enable USB Wake Support
Wireless Radio Control	<p>Allows you to control the WLAN and WWAN radio. The options are:</p> <ul style="list-style-type: none"> Control WLAN radio Control WWAN radio <p>Default Setting: both the options are disabled.</p>
Wake on LAN/WLAN	<p>This option allows the computer to power up from the off state when triggered by a special LAN signal. Wake-up from the Standby state is unaffected by this setting and must be enabled in the operating system. This feature only works when the computer is connected to AC power supply.</p> <ul style="list-style-type: none"> Disabled - Does not allow the system to power on by special LAN signals when it receives a wake-up signal from the LAN or wireless LAN. (Default Setting) LAN Only - Allows the system to be powered on by special LAN signals. WLAN Only LAN or WLAN LAN with PXE Boot
Block Sleep	<p>Allows you to block the computer from entering into the sleep state. Option is disabled by default.</p> <ul style="list-style-type: none"> Block Sleep (S3)
Peak Shift	<p>Peak Shift can be used to minimize AC consumption during peak power times of day. Set the start and end time to run in Peak Shift mode.</p> <ul style="list-style-type: none"> Enable Peak Shift (Disabled)

Option	Description
Advanced Battery Charge Configuration	<p>Allows batteries in the system in Advanced Battery Charge Mode to maximize battery health. This uses standard charging algorithm and other techniques during non-work hours to maximize battery health</p> <ul style="list-style-type: none"> • Enable Advanced Battery Charge Mode(Disabled)
Primary Battery Configuration	<p>Allows you to define how to use the battery charge, when AC is plugged in. The options are:</p> <ul style="list-style-type: none"> • Adaptive(Enabled) • Standard Charge • Express Charge • Primary AC Use • Custom Charge — you can set the percentage to which the battery must charge.
Battery Slice Configuration (Latitude 7240)	<p>Allows you to define the how to charge the battery. Note that 'Advanced Battery Charge Mode' must be disabled in order to enable this option. The options are:</p> <ul style="list-style-type: none"> • Standard Charge • Express Charge (Default Setting)
Intel Smart Connect Technology	<p>The option is disabled by default. If option enables will periodically sense nearby wireless connection while the system is asleep. It will synchronize emails or social media application that were open when system entered the sleep state.</p> <ul style="list-style-type: none"> • Smart Connection(Disabled)

Table 9. POST Behavior

Option	Description
Adapter Warnings	<p>Allows you to activate the adapter warning messages when certain power adapters are used. The option is enabled by default.</p> <ul style="list-style-type: none"> • Enable Adapter Warnings
Keypad (Embedded)	<p>Allows you to choose one of two mode it enable the keypad that us embedded in the internal keyboard.</p> <ul style="list-style-type: none"> • Fn Key Only • By Numlock <p> NOTE: When setup is running, this option has no effect, Setup works in the "Fn Key Only" mode.</p>
Mouse/Touchpad	<p>Allows you to define how the computer handles the mouse and touchpad input. The options are:</p> <ul style="list-style-type: none"> • Serial Mouse • PS2 Mouse • Touchpad/PS-2 Mouse (Default Setting)

Option	Description
Numlock Enable	Specifies if the NumLock function can be enabled when the computer boots. This option is enabled by default. <ul style="list-style-type: none"> • Enable Numlock
Fn Key Emulation	Allows you to match the <Scroll Lock> key feature of PS-2 keyboard with the <Fn> key feature in an internal keyboard. The option is enabled by default. <ul style="list-style-type: none"> • Enable Fn Key Emulation
Fastboot	Allows you to speed up the boot process by bypassing some compatibility steps. <ul style="list-style-type: none"> • Minimal • Thorough • Auto
Extended BIOS POST Time	Allows to creates an additional pre-boot delay and allows the user to see POST status message. <ul style="list-style-type: none"> • 0 seconds • 5 seconds • 10 seconds

Table 10. Virtualization Support

Option	Description
Virtualization	Allows you to enable or disable the Intel Virtualization Technology. Default Setting: Enable Intel Virtualization Technology
VT for Direct I/O	Enables or disables the Virtual Machine Monitor (VMM) from utilizing the additional hardware capabilities provided by Intel® Virtualization technology for direct I/O. Enable VT for Direct I/O — This option is enabled by default.
Trusted Execution	This option specifies whether a Measured Virtual Machine Monitor (MVMM) can utilize the additional hardware capabilities provided by Intel Trusted Execution Technology. The TPM virtualization Technology, and Virtualization technology for direct I/O must be enabled to use this feature. Trusted Execution — disabled by default.

Table 11. Wireless

Option	Description
Wireless Switch	Allows you to determine which wireless device can be controlled by the wireless switch. The options are: <ul style="list-style-type: none"> • WWAN • WLAN • Bluetooth • WiGig All options are enabled by default.
Wireless Device Enable	Allows you to enable or disable the wireless devices. The options are:

Option	Description
	<ul style="list-style-type: none"> • WWAN • Bluetooth • WLAN/WiGig <p>All options are enabled by default.</p>

Table 12. Maintenance

Option	Description
Service Tag	Displays the service tag of your computer.
Asset Tag	Allows you to create a system asset tag if an asset tag is not already set. This option is not set by default.


Table 13. System Logs


Option	Description
BIOS events	<p>Displays the system event log and allows you to clear the log.</p> <ul style="list-style-type: none"> • Clear Log
Thermal Events	<p>Displays the thermal event log and allows you to clear the log.</p> <ul style="list-style-type: none"> • Clear Log
Power Events	<p>Displays the power event log and allows you to clear the log.</p> <ul style="list-style-type: none"> • Clear Log

Updating the BIOS

It is recommended to update your BIOS (system setup), on replacing the system board or if an update is available. For laptops, ensure that your computer battery is fully charged and connected to a power outlet

1. Restart the computer.
2. Go to dell.com/support.
3. If you have your computer's Service Tag or Express Service Code:

 **NOTE:** To locate the Service Tag, click **Where is my Service Tag?**

 **NOTE:** If you cannot find your Service Tag, click **Detect Service Tag**. Proceed with the instructions on screen.
4. Enter the **Service Tag** or **Express Service Code** and click **Submit**.
5. If you are unable to locate or find the Service Tag, click the Product Category of your computer.
6. Choose the **Product Type** from the list.
7. Select your computer model and the **Product Support** page of your computer appears.
8. Click **Drivers & Downloads**.
9. On the Drivers and Downloads screen, under the **Operating System** drop-down list, select **BIOS**.
10. Identify the latest BIOS file and click **Download File**.
11. Select your preferred download method in the **Please select your download method below window**; click **Download File**.

The **File Download** window appears.

12. Click **Save** to save the file on your computer.
13. Click **Run** to install the updated BIOS settings on your computer.
Follow the instructions on the screen.


System and Setup Password

You can create a system password and a setup password to secure your computer.

Password Type	Description
System password	Password that you must enter to log on to your system.
Setup password	Password that you must enter to access and make changes to the BIOS settings of your computer.


 **CAUTION:** The password features provide a basic level of security for the data on your computer.

 **CAUTION:** Anyone can access the data stored on your computer if it is not locked and left unattended.

 **NOTE:** Your computer is shipped with the system and setup password feature disabled.

Assigning a System Password and Setup Password

You can assign a new **System Password** and/or **Setup Password** or change an existing **System Password** and/or **Setup Password** only when **Password Status** is **Unlocked**. If the Password Status is **Locked**, you cannot change the System Password.

 **NOTE:** If the password jumper is disabled, the existing System Password and Setup Password is deleted and you need not provide the system password to log on to the computer.

To enter a system setup, press <F2> immediately after a power-on or reboot.

1. In the **System BIOS** or **System Setup** screen, select **System Security** and press <Enter>.
The **System Security** screen appears.
2. In the **System Security** screen, verify that **Password Status** is **Unlocked**.
3. Select **System Password**, enter your system password, and press <Enter> or <Tab>.
Use the following guidelines to assign the system password:

- A password can have up to 32 characters.
- The password can contain the numbers 0 through 9.
- Only lower case letters are valid, upper case letters are not allowed.
- Only the following special characters are allowed: space, ("), (+), (,), (-), (.), (/), (;), ([), (\), (]), (').

Re-enter the system password when prompted.

4. Type the system password that you entered earlier and click **OK**.
5. Select **Setup Password**, type your system password and press <Enter> or <Tab>.
A message prompts you to re-type the setup password.
6. Type the setup password that you entered earlier and click **OK**.
7. Press <Esc> and a message prompts you to save the changes.
8. Press <Y> to save the changes.

The computer reboots.

Deleting or Changing an Existing System and/or Setup Password

Ensure that the **Password Status** is Unlocked (in the System Setup) before attempting to delete or change the existing System and/or Setup password. You cannot delete or change an existing System or Setup password, if the **Password Status** is Locked.

To enter the System Setup, press <F2> immediately after a power-on or reboot.

1. In the **System BIOS** or **System Setup** screen, select **System Security** and press <Enter>. The **System Security** screen is displayed.
2. In the **System Security** screen, verify that **Password Status** is **Unlocked**.
3. Select **System Password**, alter or delete the existing system password and press <Enter> or <Tab>.
4. Select **Setup Password**, alter or delete the existing setup password and press <Enter> or <Tab>.



NOTE: If you change the System and/or Setup password, re-enter the new password when promoted. If you delete the System and/or Setup password, confirm the deletion when promoted.

5. Press <Esc> and a message prompts you to save the changes.
6. Press <Y> to save the changes and exit from the System Setup.

The computer reboots.

Diagnostics

If you experience a problem with your computer, run the ePSA diagnostics before contacting Dell for technical assistance. The purpose of running diagnostics is to test your computer's hardware without requiring additional equipment or risking data loss. If you are unable to fix the problem yourself, service and support personnel can use the diagnostics results to help you solve the problem.

Enhanced Pre-Boot System Assessment (ePSA) Diagnostics

The ePSA diagnostics (also known as system diagnostics) performs a complete check of your hardware. The ePSA is embedded with the BIOS and is launched by the BIOS internally. The embedded system diagnostics provides a set of options for particular devices or device groups allowing you to:

- Run tests automatically or in an interactive mode
- Repeat tests
- Display or save test results
- Run thorough tests to introduce additional test options to provide extra information about the failed device(s)
- View status messages that inform you if tests are completed successfully
- View error messages that inform you of problems encountered during testing



CAUTION: Use the system diagnostics to test only your computer. Using this program with other computers may cause invalid results or error messages.



NOTE: Some tests for specific devices require user interaction. Always ensure that you are present at the computer terminal when the diagnostic tests are performed.

1. Power-on the computer.
2. As the computer boots, press the <F12> key as the Dell logo appears.
3. On the boot menu screen, select the **Diagnostics** option.
The **Enhanced Pre-boot System Assessment** window is displayed, listing all devices detected in the computer. The diagnostics starts running the tests on all the detected devices.
4. If you wish to run a diagnostic test on a specific device, press <Esc> and click **Yes** to stop the diagnostic test.
5. Select the device from the left pane and click **Run Tests**.
6. If there are any issues, error codes are displayed.
Note the error code and contact Dell.

Device Status Lights

Table 14. Device Status Lights



Turns on when you turn on the computer and blinks when the computer is in a power management mode.



Turns on when the computer reads or writes data.



Turns on steadily or blinks to indicate battery charge status.



Turns on when wireless networking is enabled.

The device status LEDs are usually located either on the top or left side of the keyboard. They are used to display the storage, battery and wireless devices connectivity and activity. Apart from that they can be useful as a diagnostic tool when there's a possible failure to the system.

The following table lists how to read the LED codes when possible errors occur.

Table 15. LED Lights

Storage LED	Power LED	Wireless LED	Fault Description
Blinking	Solid	Solid	A possible processor failure has occurred.
Solid	Blinking	Solid	The memory modules are detected but has encountered an error.
Blinking	Blinking	Blinking	A system board failure has occurred.
Blinking	Blinking	Solid	A possible graphics card/video failure has occurred.
Blinking	Blinking	Off	System failed on hard drive initialization OR System failed in Option ROM initialization.
Blinking	Off	Blinking	The USB controller encountered a problem during initialization.
Solid	Blinking	Blinking	No memory modules are installed/detected.
Blinking	Solid	Blinking	The display encountered a problem during initialization.
Off	Blinking	Blinking	The modem is preventing the system from completing POST
Off	Blinking	Off	Memory failed to initialize or memory is unsupported.

Battery Status Lights

If the computer is connected to an electrical outlet, the battery light operates as follows:

**Alternately
blinking amber
light and white
light**

An unauthenticated or unsupported non-Dell AC adapter is attached to your laptop.

**Alternately
blinking amber
light with steady
white light**

Temporary battery failure with AC adapter present.

**Constantly
blinking amber
light**

Fatal battery failure with AC adapter present.

Light off

Battery in full charge mode with AC adapter present.

White light on

Battery in charge mode with AC adapter present.

Specifications


 **NOTE:** Offerings may vary by region. The following specifications are only those required by law to ship with your computer. For comprehensive specification of your computer go to **Specifications** section in your **Owner's Manual** available on the support site at dell.com/support. For more information about the configuration of your computer, go to **Help and Support** in your Windows operating system and select the option to view information about your computer.

Table 16. System Information

Feature	Specification	
	Latitude 7240	Latitude 7440
Chipset	Lynx Point-LP	Intel QM87 Express Chipset
DRAM bus width	64-bit	64-bit
Flash EPROM	SPI 32 Mbits, 64 Mbits	SPI 32 Mbits, 64 Mbits
PCIe bus	100 MHz	100 MHz
External Bus Frequency	DMI (5GT/s)	DMI (5GT/s)

Table 17. Processor

Feature	Specification
Types	Intel Core i3 / i5 / i7series
L3 cache	3 MB, 4MB, 6 MB, and 8 MB

Table 18. Memory

Feature	Specification
Memory connector	Two SODIMM slots
Memory capacity	2GB, 4GB, or 8GB
Memory type	DDR3L SDRAM (1600 MHz)
Minimum memory	2 GB
Maximum memory	16 GB

Table 19. Audio

Feature	Specification
Type	four-channel high-definition audio
Controller	Realtek ALC3226

Feature	Specification
Stereo conversion	24-bit (analog-to-digital and digital-to-analog)
Interface:	
Internal	high-definition audio
External	microphone-in, stereo headphones, and headset combo connector
Speakers	two
Internal speaker amplifier	1 W (RMS) per channel
Volume controls	hot keys

Table 20. Video


Feature	Specification
Type	integrated on system board
Controller:	
UMA	Intel HD Graphics 4600
Discrete	AMD Radeon HD 8690M Graphics
Data bus	PCI-E Gen3 x8
External display support	<ul style="list-style-type: none"> • one VGA • one HDMI
 NOTE: Support two DP/DVI ports through Docking station.	

Table 21. Camera

Features	Specification
Camera Resolution	1280 x 720 pixels
Video Resolution (maximum)	1280 x 720 pixels
Diagonal viewing angle	74 °

Table 22. Communications

Features	Specification
Network adapter	10/100/1000 Mb/s Ethernet (RJ-45)
Wireless	internal wireless local area network (WLAN) and wireless wide area network (WWAN)

Table 23. Ports and Connectors

Features	Specification
Audio	one microphone/stereo headphone/speakers connector
Video	Mini DisplayPort connector and 19-pin HDMI connector
Network adapter	RJ-45 connector
USB 3.0	two USB 3.0 compliant connectors and one eSATA/USB 3.0 compliant connector
Memory card reader	Support upto SD4.0
Micro Subscriber Identity Module (uSIM) card	one
Docking port	one

Table 24. Display

Feature	Specification	
	Latitude 7240	Latitude 7440
Type	HD Anti-Glare	HD Anti-Glare
Dimensions:		
Height	180.0 mm (7.08 inches)	205.6 mm (8.09 inches)
Width	300.90 mm (11.84 inches)	320.9 mm (12.63 inches)
Diagonal	3.6 mm (0.14 inch)	3.6 mm (0.14 inch)
Maximum resolution	1366 x 768	1366 x 768
Refresh rate	60 Hz	60 Hz
Minimum Viewing Angles:		
Horizontal	+/-40°	+/-40°
Vertical	+15°/-30°	+15°/-30°
Pixel pitch	1.05	1.05

Table 25. Keyboard

Feature	Specification
Number of keys	United States: 86 keys, United Kingdom: 87 keys, Brazil: 87 keys, and Japan: 90 keys

Table 26. Touchpad

Feature	Specification	
	Latitude 7240	Latitude 7440
Active Area:		
X-axis	98.8 mm	100 mm

Feature	Specification	
	Latitude 7240	Latitude 7440
Y-axis	60.8 mm	47 mm

Table 27. Battery

Feature			Specification
Type			<ul style="list-style-type: none"> 3-cell “smart” Lithium ion 4cell “smart” Lithium ion
Dimensions:			<div>Latitude 7240</div> <div>Latitude 7440</div>
3–cell/4–cell			
Depth			80.75 mm (3.18 inches) 74.75 mm (2.94 inches)
Height			7.20 mm (0.28 inch) 8.00 mm (0.31 inch)
Width			282.00 mm (11.10 inches) 308.50 mm (12.15 inches)
Weight:			
3-cell			250.00 g (0.55 lb) 247.00 g (0.54 lb)
4–cell			300.00 g (0.66 lb) 308.00 g (0.68 lb)
Voltage			
3-cell			11.10 VDC
4–cell			7.40 VDC
Temperature range:			
Operating			Charge: 0 °C to 50 °C (32 °F to 158 °F) Discharge: 0 °C to 70 °C (32 °F to 122 °F)
Non-Operating			–20 °C to 65 °C (4 °F to 149 °F)
Coin-cell battery			3 V CR2032 lithium coin cell

Table 28. AC Adapter

Feature		Specification
Type		65 W and 90 W
Input voltage		100 VAC to 240 VAC
Input current (maximum)		1.50 A
Input frequency		50 Hz to 60 Hz
Output power		65 W
Output current		3.34 A (continuous)
Rated output voltage		19.5 VDC
Weight		0.51 lb (0.23 kg)

Feature	Specification
Dimensions	0.87 x 2.60 x 4.17 inches (22 x 66 x 106 mm)
Temperature range:	
Operating	0 °C to 40 °C (32 °F to 104 °F)
Non-Operating	–40 °C to 70 °C (–40 °F to 158 °F)


Table 29. Physical

Feature	Latitude 7240	Latitude 7440
Height	20.0 mm (0.79 inch)	21.0 mm (0.80 inch)
Width	310.5 mm (12.22 inches)	337 mm (13.2 inches)
Depth	211.0 mm (8.3 inches)	231.5 mm (9.1 inches)
Weight (with 3-cell battery)	1.36 kg (2.99 lb)	1.63 kg (3.6 lb)

Table 30. Environmental


Feature	Specification
Temperature:	
Operating	0 °C to 60 °C (32 °F to 140 °F)
Storage	–51 °C to 71 °C (–59 °F to 159 °F)
Relative humidity (maximum):	
Operating	10 % to 90 % (noncondensing)
Storage	5 % to 95 % (non condensing)
Altitude (maximum):	
Operating	–15.2 m to 3048 m (–50 to 10,000 ft) 0° to 35°C
Non-Operating	–15.24 m to 10,668 m (–50 ft to 35,000 ft)
Airborne contaminant level	G2 or lower as defined by ISA S71.04–1985

Contacting Dell

 **NOTE:** Dell provides several online and telephone-based support and service options. If you do not have an active Internet connection, you can find contact information on your purchase invoice, packing slip, bill, or Dell product catalog. Availability varies by country and product, and some services may not be available in your area.

To contact Dell for sales, technical support, or customer-service issues:

1. Go to **dell.com/contactdell**.
2. Select your country or region from the interactive world map.
When you select a region, the countries for the selected regions are displayed.
3. Select the appropriate language under the country of your choice.
4. Select your business segment.
The main support page for the selected business segment is displayed.
5. Select the appropriate option depending on your requirement.

 **NOTE:** If you have purchased a Dell system, you may be asked for the Service Tag.