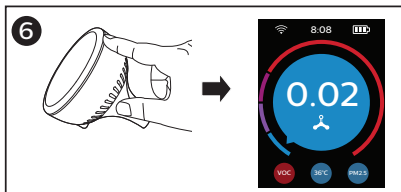
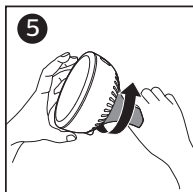
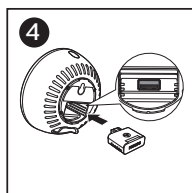
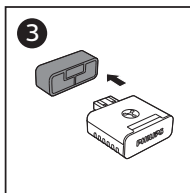
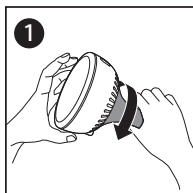


PHILIPS



The formaldehyde sensor will last 24 months* in normal conditions, however due to different usage environments, the sensor may have a longer or shorter life. We suggest user to replace the formaldehyde sensor according to indications from appliance.

*24months according to Philips internal test and assessment ,test at average 1ppm equivalent Formaldehyde concentration with Ethanol.

甲醛感应插件在正常使用环境下建议使用时间为24个月*，因使用环境不同，使用时间有可能会更长或更短。我们建议用户根据飞利浦甲醛感应插件更换提示，适时更换。

*24个月根据飞利浦内部测试及评估得来，测试在乙醇气体中进行，平均测试浓度等效于1PPM浓度的甲醛。



© 2016 Koninklijke Philips N.V.
All rights reserved.

4241 210 88021



Note:
To ensure formaldehyde sensing

- 1** For first time turning on, not using it for a long time or impacted by high concentrated pollution gas, formaldehyde value might show a higher reading initially, this is normal. Place the appliance in a ventilated area until value drops to below 0.05.
- 2** For storage, please keep under dry and ventilated environment.
- 3** Please keep it away from high concentrated substances like alcohol, perfume, oil smoke, etc. If interfered by these substance and showing high value readings, place the appliance in a ventilated area to recover.

注意事项
为了保证甲醛测量准确

- 1** 首次使用产品，长时间不用或接触高浓度污染气体后甲醛读数可能过高，这属于正常情况。将产品放置在通风的位置直至甲醛数值降到0.05以下后使用。
- 2** 设备长期不用时请放置在干燥通风处。
- 3** 请远离酒精、香水、油烟等高浓度污染环境，如受污染请通风处理。