



Philips
LCD display with SoftBlue
LED technology

C Line

32 (viewable 31.5" / 80 cm)
Full HD (1920 x 1080)

322C6QSW



Expand your experience

Expand your viewing experience with this big Philips display. With this expansive 32" class full HD display you can truly immerse yourself into the game, or even give yourself needed space to spread out your work.

Expand your viewing experience

- IPS-ADS wide-view technology for image and color accuracy
- Expansive 31.5-inch brilliant display
- 16:9 Full HD display for crisp detailed images
- SoftBlue Technology easier on the eyes and maintains color
- SmartContrast for rich black details
- SmartImage presets for easy optimized image settings

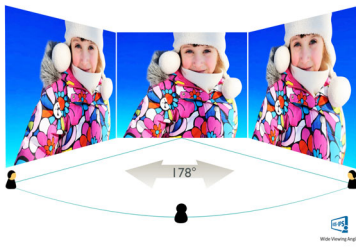
Design to enhance the looks

- UltraSlim for a stylish look

PHILIPS

Highlights

IPS-ADS technology



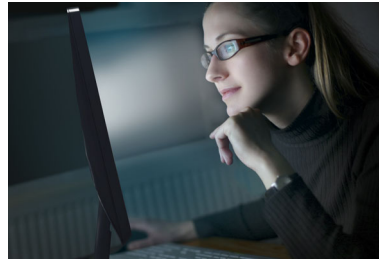
IPS-ADS displays use an advanced technology which gives you extra wide viewing angles of 178/178 degree, making it possible to view the display from almost any angle. Unlike standard TN panels, IPS-ADS displays give you remarkably crisp images with vivid colors, making it ideal not only for Photos, movies and web browsing, but also for professional applications which demand color accuracy and consistent brightness at all times.

16:9 Full HD display



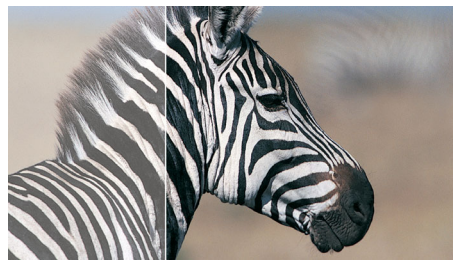
Picture quality matters. Regular displays deliver quality, but you expect more. This display features enhanced Full HD 1920 x 1080 resolution. With Full HD for crisp detail paired with high brightness, incredible contrast and realistic colors expect a true to life picture.

SoftBlue Technology



Studies have shown that just as ultra-violet rays can cause eye damage, blue light rays from LED displays can cause eye damage and affect vision over time. SoftBlue LED technology uses a smart technology to reduce the harmful blue light waves without affecting the color or image of the display. SoftBlue LED technology is certified by international testing organizations SGS Labs and TUV Rheinland to reduce harmful blue light.

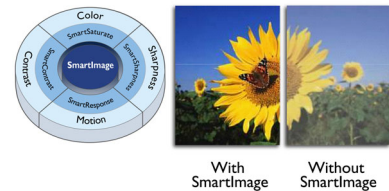
SmartContrast



SmartContrast is a Philips technology that analyzes the contents you are displaying, automatically adjusting colors and controlling backlight intensity to dynamically enhance contrast for the best digital images and videos or when playing games where dark hues are

displayed. When Economy mode is selected, contrast is adjusted and backlighting fine-tuned for just-right display of everyday office applications and lower power consumption.

SmartImage



SmartImage is an exclusive leading edge Philips technology that analyzes the content displayed on your screen and gives you optimized display performance. This user friendly interface allows you to select various modes like Office, Photo, Movie, Game, Economy etc., to fit the application in use. Based on the selection, SmartImage dynamically optimizes the contrast, color saturation and sharpness of images and videos for ultimate display performance. The Economy mode option offers you major power savings. All in real time with the press of a single button!

Specifications

Picture/Display

- LCD panel type: IPS-ADS LCD
- Backlight type: W-LED system
- Panel Size: 31.5 inch / 80 cm
- Effective viewing area: 698.4 (H) x 392.85 (V)
- Aspect ratio: 16:9
- Optimum resolution: 1920 x 1080 @ 60 Hz
- Response time (typical): 8 (GtG) ms
- SmartResponse (typical): 5 ms (GtG)
- Brightness: 250 cd/m²
- Contrast ratio (typical): 1,200:1
- SmartContrast: 20,000,000:1
- Pixel pitch: 0.364 x 0.364 mm
- Viewing angle: 178° (H) / 178° (V), @ C/R > 10
- Picture enhancement: SmartImage
- Display colors: 16.7 M
- Scanning Frequency: 30 - 83 kHz (H) / 56 -75 Hz (V)
- sRGB
- SoftBlue

Connectivity

- Signal Input: VGA (Analog), DVI-D (digital, HDCP)
- Sync Input: Separate Sync, Sync on Green

Convenience

- User convenience: Input/Return, 4:3 Wide/Up, SmartImage/Down, Menu/OK, Power On/Off
- OSD Languages: Brazil Portuguese, Czech, Dutch, English, Finnish, French, German, Greek, Hungarian, Italian, Japanese, Korean, Polish, Portuguese, Russian, Simplified Chinese, Spanish, Swedish, Traditional Chinese, Turkish, Ukrainian
- Other convenience: Kensington lock
- Plug & Play Compatibility: DDC/CI, Mac OS X, sRGB, Windows 7, Windows 8

Stand

- Tilt: -5/10 degree

Power

- On mode: 43.78 W (typ.), 50 W (max.)
- Standby mode: <0.5 W (typ.)
- Off mode: <0.3 W (typ.)
- Power LED indicator: Operation - White, Standby mode- White (blinking)
- Power supply: 100-240VAC, 50-60Hz, Built-in

Dimensions

- Product with stand (mm): 727 x 485 x 180 mm
- Product without stand (mm): 727 x 426 x 44 mm
- Packaging in mm (WxHxD): 833 x 557 x 171 mm

Weight

- Product with stand (kg): 7.48 kg
- Product without stand (kg): 6.30 kg
- Product with packaging (kg): 10.21 kg

Operating conditions

- Temperature range (operation): 0 to 40 °C
- Temperature range (storage): -20 to 60 °C
- Relative humidity: 20%-80 %
- Altitude: Operation: +12,000ft (3,658m), Non-operation: +40,000ft (12,192m)
- MTBF: 30,000 hour(s)

Sustainability

- Environmental and energy: RoHS, Lead-free, Mercury Free
- Recyclable packaging material: 100 %

Compliance and standards

- Regulatory Approvals: CCC, CEL, WEEE

Cabinet

- Front bezel: Grey
- Rear cover: White
- Foot: Grey
- Finish: Glossy



Issue date 2016-03-21

Version: 3.0.1

12 NC: 8670 001 30805
EAN: 69 51613 90911 9

© 2016 Koninklijke Philips N.V.
All Rights reserved.

Specifications are subject to change without notice.
Trademarks are the property of Koninklijke Philips N.V.
or their respective owners.

www.philips.com

* "IPS" word mark / trademark and related patents on technologies belong to their respective owners.
* Smart response time is the optimum value from either GtG or GtG (BW) tests.