

Philips
LCD monitor with Ultra
Wide-Color

E Line
25" (63.4 cm)
Full HD (1920 x 1080)

256E7QDSH6



Vivid, true-to-life colors

in an elegant design

This brilliant wide view display with UltraColor offers true-to-life colors wrapped in an elegance-inspired design for a light and fresh face in any home or office.

Superb Picture Quality

- Ultra Wide-Color wider range of colors for a vivid picture
- IPS LED wide view technology for image and color accuracy
- 16:9 Full HD display for crisp detailed images
- Less eye fatigue with Flicker-free technology
- SmartContrast for deep black level details
- SmartImage Lite for easy optimized image settings

Elegant Design

- EasySelect menu toggle key for quick on-screen menu access
- Edge-to-edge glass and narrow border for seamless appearance
- UltraSlim for a stylish look

Experience multimedia

- MHL technology for enjoying mobile content on big screen

Greener everyday

- Eco-friendly materials that meets international standards

PHILIPS

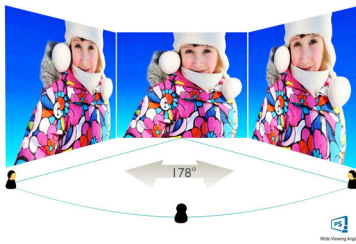
Highlights

Ultra Wide-Color Technology



Ultra Wide-Color Technology delivers a wider spectrum of colors for a more brilliant picture. Ultra Wide-Color wider "color gamut" produces more natural-looking greens, vivid reds and deeper blues. Bring, media entertainment, images, and even productivity more alive and vivid colors from Ultra Wide-Color Technology.

IPS technology



IPS displays use an advanced technology which gives you extra wide viewing angles of 178/178 degree, making it possible to view the display from almost any angle. Unlike standard TN panels, IPS displays gives you remarkably crisp images with vivid colors, making it ideal not only for Photos, movies and web browsing, but also for professional applications which demand color accuracy and consistent brightness at all times.

16:9 Full HD display



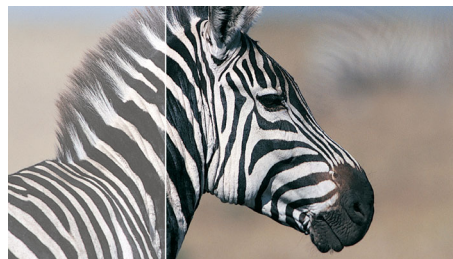
Picture quality matters. Regular displays deliver quality, but you expect more. This display features enhanced Full HD 1920 x 1080 resolution. With Full HD for crisp detail paired with high brightness, incredible contrast and realistic colors expect a true to life picture.

Flicker-free technology



Due to the way brightness is controlled on LED-backlit screens, some users experience flicker on their screen which causes eye fatigue. Philips Flicker-free Technology applies a new solution to regulate brightness and reduce flicker for more comfortable viewing.

SmartContrast



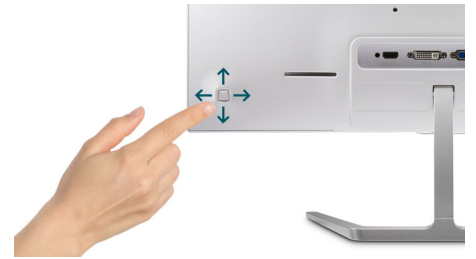
SmartContrast is a Philips technology that analyzes the contents you are displaying, automatically adjusting colors and controlling backlight intensity to dynamically enhance

contrast for the best digital images and videos or when playing games where dark hues are displayed. When Economy mode is selected, contrast is adjusted and backlighting fine-tuned for just-right display of everyday office applications and lower power consumption.

SmartImage Lite

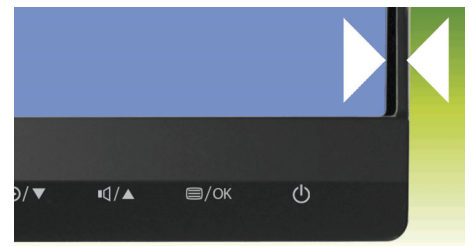
SmartImage Lite is an exclusive, leading edge Philips technology that analyzes the content displayed on your screen. Based on a scenario you select, SmartImage Lite dynamically enhances the contrast, color saturation and sharpness of images and videos for ultimate display performance - all in real time with the press on a single button.

EasySelect Menu Toggle Key



The discreetly placed EasySelect Menu Toggle Key allows you to make quick and easy adjustments to monitor settings in the On-Screen Display menu.

UltraNarrow Border



The new Philips displays feature ultra-narrow borders which allow for minimal distractions and maximum viewing size. Especially suited for multi-display or tiling setup like gaming, graphic design and professional applications, the ultra-narrow border display gives you the feeling of using one large display.



Specifications

Picture/Display

- LCD panel type: IPS technology
- Backlight type: W-LED system
- Panel Size: 25 inch / 63.4 cm
- Effective viewing area: 552.96 (H) x 308.64 (V)
- Aspect ratio: 16:9
- Optimum resolution: 1920 x 1080 @ 60Hz
- Response time (typical): 5 ms (Gray to Gray)*
- Brightness: 250 cd/m²
- Contrast ratio (typical): 1000:1
- SmartContrast: 20,000,000:1
- Pixel pitch: 0.288 x 0.285 mm
- Viewing angle: 178° (H) / 178° (V), @ C/R > 10
- Flicker-free
- Picture enhancement: SmartImage Lite
- Color gamut: NTSC 108% (CIE1976)*
- Display colors: 16.7 M
- Scanning Frequency: 30 -83 kHz (H) / 56 -76 Hz (V)
- MHL: 1080p @ 60Hz
- sRGB

Connectivity

- Signal Input: VGA (Analog), DVI-D (digital, HDCP), MHL-HDMI (digital, HDCP)
- Sync Input: Separate Sync, Sync on Green
- Audio (In/Out): HDMI audio out

Convenience

- User convenience: Power On/Off, Menu, Volume (HDMI Audio out), Input, SmartImage lite
- OSD Languages: Brazil Portuguese, Czech, Dutch, English, Finnish, French, German, Greek, Hungarian, Italian, Japanese, Korean, Polish, Portuguese, Russian, Simplified Chinese, Spanish, Swedish, Traditional Chinese, Turkish, Ukrainian
- Other convenience: Kensington lock, VESA mount (100x100mm)
- Plug & Play Compatibility: DDC/CI, Mac OS X, sRGB, Windows 10 / 8.1 / 8 / 7

Stand

- Tilt: -5/20 degree

Power

- On mode: 18.29 W (typ.) (EnergyStar 7.0 test method)
- Standby mode: 0.5 W (typ.)
- Off mode: 0.3 W (typ.)
- Power LED indicator: Operation - White, Standby mode- White (blinking)
- Power supply: External, 100-240VAC, 50-60Hz

Dimensions

- Product with stand (mm): 577 x 436 x 179 mm
- Product without stand (mm): 577 x 342 x 49 mm
- Packaging in mm (WxHxD): 633 x 511 x 121 mm

Weight

- Product with stand (kg): 3.96 kg
- Product without stand (kg): 3.73 kg
- Product with packaging (kg): 5.89 kg

Operating conditions

- Temperature range (operation): 0°C to 40°C °C
- Temperature range (storage): -20°C to 60°C °C
- Relative humidity: 20%-80 %
- Altitude: Operation: +12,000ft (3,658m), Non-operation: +40,000ft (12,192m)
- MTBF: 50,000 (excluding backlight) hour(s)

Sustainability

- Environmental and energy: EnergyStar 7.0, EPEAT Silver, RoHS, Lead-free, Mercury Free
- Recyclable packaging material: 100 %

Compliance and standards

- Regulatory Approvals: CE Mark, FCC Class B, CU-EAC, TCO certified, TUV/ISO9241-307, VCCI, C-tick, WEEE, CECP, CCC

Cabinet

- Color: White / Gold
- Finish: Glossy



Issue date 2016-12-15

Version: 1.0.1

12 NC: 8670 001 38155
EAN: 69 51613 91066 5

© 2016 Koninklijke Philips N.V.
All Rights reserved.

Specifications are subject to change without notice.
Trademarks are the property of Koninklijke Philips N.V.
or their respective owners.

www.philips.com

* This Philips display is MHL certified. However, in case your MHL device does not connect or work correctly, check with your MHL device FAQ or vendor directly for direction. The policy of your device manufacturer may require you to purchase their brand specific MHL cable or adapter in order to work

* Requires optional MHL certified mobile device and MHL cable. (not included) Please check with your MHL device vendor for compatibility.

* Standby/Off energy saving of ErP is not applicable for the MHL charging functionality

* For complete list of MHL-enabled products refer to www.mhlconsortium.org

* "IPS" word mark / trademark and related patents on technologies belong to their respective owners.

* Response time value equal to SmartResponse

* NTSC 90% (CIE1931), sRGB: 128%