

PHILIPS

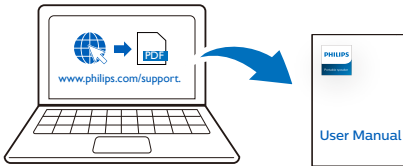
Portable speaker

BT6000



Quick Start Guide

Register your product and get support at www.philips.com/support



www.philips.com/support

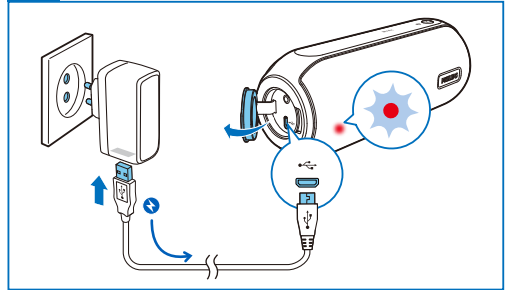
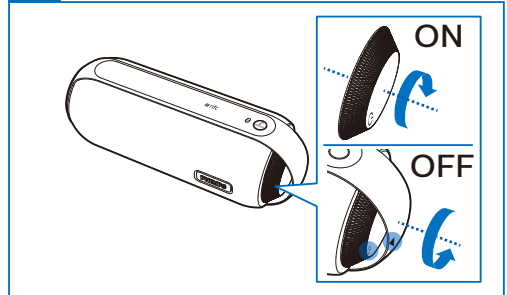
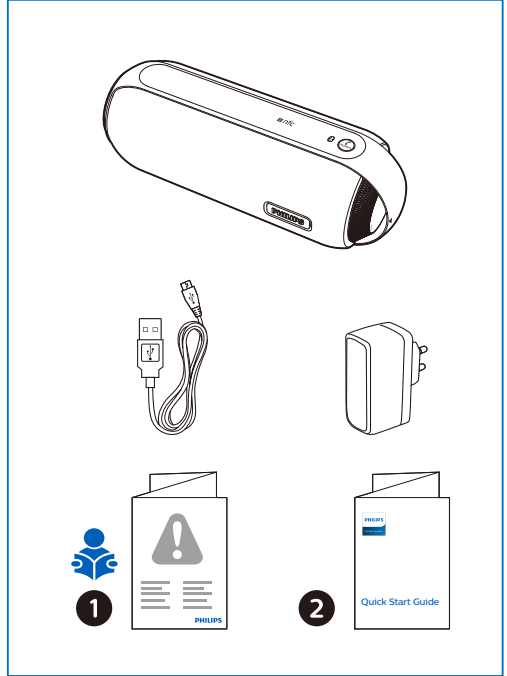


This product has been manufactured by, and is sold under the responsibility of Gibson Innovations Ltd., and Gibson Innovations Ltd. is the warrantor in relation to this product.

Philips and the Philips Shield Emblem are registered trademarks of Koninklijke Philips N.V. and are used under license.

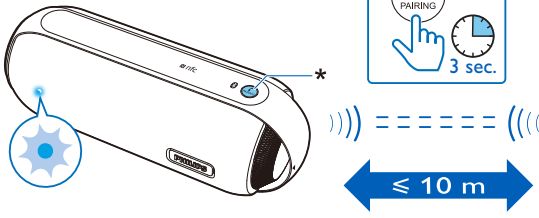


BT6000MKII_12_QSG_V1.0

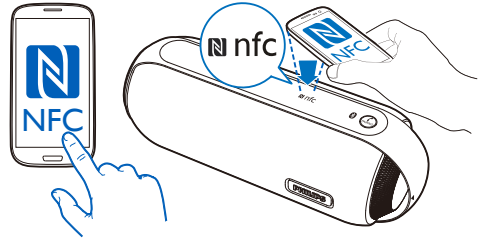




1



2 A



2 B

