

Always there to help you
Register your product and get support at
www.philips.com/support

Questions?
Contact
Philips



Quick start guide

PHILIPS

BTM1360

Safety

Read and understand all instructions before you use this micro music system. If damage is caused by failure to follow the instructions, the warranty does not apply.



This 'bolt of lightning' indicates uninsulated material within the device may cause an electrical shock. For the safety of everyone in your household, please do not remove the covering. The 'exclamation mark' calls attention to features for which you should read the enclosed literature closely to prevent operating and maintenance problems.

WARNING: To reduce the risk of fire or electric shock, the device should not be exposed to rain or moisture and objects filled with liquids, such as vases, should not be placed on the device. CAUTION: To prevent electric shock, fully insert the plug. (For regions with polarized plugs: To prevent electric shock, match wide blade to wide slot.)



Warning

- Never remove the casing of this apparatus.
- Never lubricate any part of this apparatus.
- Never look into the laser beam inside this apparatus.
- Never place this apparatus on other electrical equipment.
- Keep this apparatus away from direct sunlight, naked flames or heat.
- Ensure that you always have easy access to the power cord, plug or adaptor to disconnect the apparatus from the power.

Important notes for users in the U.K.

Mains fuse

This information applies only to products with a UK mains plug. This product is fitted with an approved non-molded plug. If you replace the fuse, use one with:

- the ratings shown on the plug,
- a BS 1362 approval, and
- the ASTA approval mark.

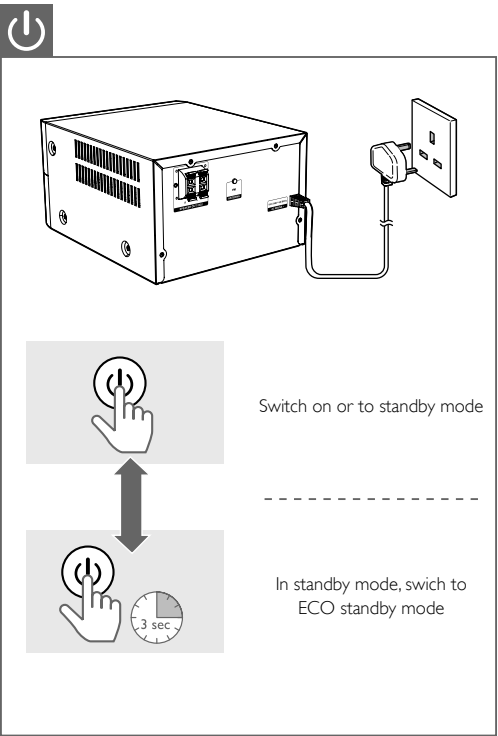
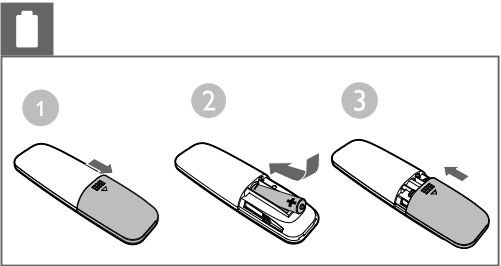
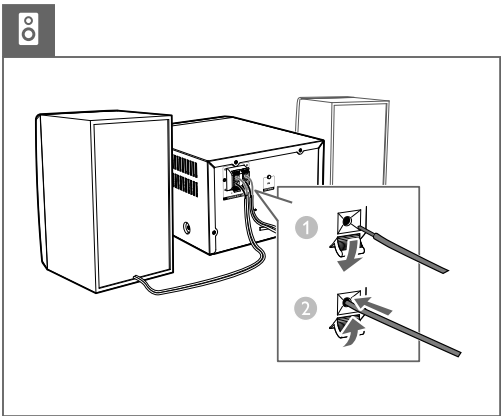
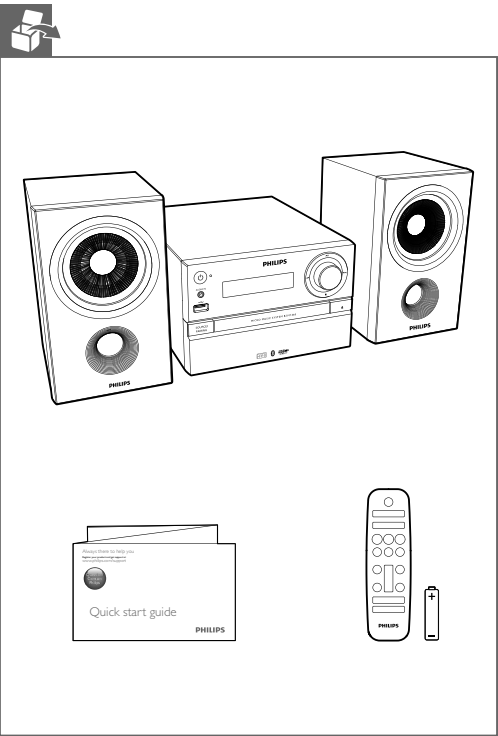
Contact your dealer if you are not sure about what type of fuse to use. Caution: To conform with the EMC directive (2004/108/EC), do not detach the plug from the power cord.

- The device shall not exposed to dripping or splashing.
- Do no place any source of danger on the device (e.g. liquid filled objects, lit candles).
- Where the MAINS plug or an appliance coupler is used as the disconnect device, the disconnect device shall remain readily operable.
- Make sure that there is enough free space around the product for ventilation.
- Battery usage CAUTION – To prevent battery leakage which may result in bodily injury, property damage, or damage to the unit:
 - Install all batteries correctly, + and - as marked on the unit.
 - Do not mix batteries (old and new or carbon and alkaline, etc.).
 - Batteries (packed or installed) shall not be exposed to excessive heat such as sunshine, fire or the like.
 - Remove batteries when the unit is not used for a long time.
- Only use attachments/accessories specified by the manufacturer.



This product has been manufactured by, and is sold under the responsibility of Gibson Innovations Ltd., and Gibson Innovations Ltd. is the warrantor in relation to this product. Philips and the Philips Shield Emblem are registered trademarks of Koninklijke Philips N.V. and are used under license.

BTM1360_05_QSG_V2.0



Notice

Any changes or modifications made to this device that are not expressly approved by Gibson Innovations may void the user's authority to operate the equipment.

Compliance

Hereby, Gibson Innovations declares that this product is in compliance with the essential requirements and other relevant provisions of Directive 2014/53/EU. You can find the Declaration of Conformity on www.philips.com/support.

This apparatus includes this label:



Care of the environment

Disposal of your old product and battery



Your product is designed and manufactured with high quality materials and components, which can be recycled and reused.



This symbol on a product means that the product is covered by European Directive 2012/19/EU.



This symbol means that the product contains batteries covered by European Directive 2013/56/EU which cannot be disposed of with normal household waste.

Inform yourself about the local separate collection system for electrical and electronic products and batteries. Follow local rules and never dispose of the product and batteries with normal household waste. Correct disposal of old products and batteries helps prevent negative consequences for the environment and human health.

Removing the disposable batteries

To remove the disposable batteries, see battery installation section.

Environmental information

All unnecessary packaging has been omitted. We have tried to make the packaging easy to separate into three materials: cardboard (box), polystyrene foam (buffer) and polyethylene (bags, protective foam sheet.) Your system consists of materials which can be recycled and reused if disassembled by a specialized company. Please observe the local regulations regarding the disposal of packaging materials, exhausted batteries and old equipment.



The Bluetooth® word mark and logos are registered trademarks owned by Bluetooth SIG, Inc. and any use of such marks by Gibson Innovations is under license.



Be responsible
Respect copyrights

The making of unauthorized copies of copy-protected material, including computer programs, files, broadcasts and sound recordings, may be an infringement of copyrights and constitute a criminal offence. This equipment should not be used for such purposes.

Care for your product

- Do not insert any objects other than discs into the disc compartment.
- Do not insert warped or cracked discs into the disc compartment.
- Remove the discs from the disc compartment if you are not using the product for an extended period of time.
- Only use microfiber cloth to clean the product.



Note

- The type plate is located on the back of the product.

Specifications

Amplifier	
Total Output Power	Maximum 30 W
Frequency Response	60 Hz - 20 kHz; ±3 dB
Signal to Noise Ratio	≥75 dBA
Total Harmonic Distortion	<1%
Aux Input	600 mV±100mV RMS 22kohm

Speakers

Speaker Impedance	4 ohm
Speaker Driver	Full range 3.5"
Sensitivity	83 ± 3dB/m/W

Tuner (FM)	
Tuning Range	87.5-108 MHz
Tuning grid	50 KHz

Sensitivity	
- Mono, 26dB S/N Ratio	<22 dBf
- Stereo, 46dB S/N Ratio	<45 dBf
Search Selectivity	<30 dBf
Total Harmonic Distortion	<3%
Signal to Noise Ratio	>45 dB

USB	
USB Direct Version	2.0 Full Speed
Charging support	5V, 500mA

Disc	
Laser Type	Semiconductor
Disc Diameter	12 cm/8 cm
Support Disc	CD-DA, CD-R, CD-RW, MP3-CD
Audio DAC	24 Bits/44.1 KHz
Total Harmonic Distortion	<3% (1 KHz)
Frequency Response	20 Hz - 20 kHz (44.1 KHz)
S/N Ratio	≥80 dBA

Bluetooth	
Bluetooth Version	V4.0
Frequency band/Output power	2.400GHz - 2.483GHz ISM Band / ≤ 4dBm (Class 2)
Bluetooth Range	10 m (free space)

General information	
AC power	100-240 V~, 50/60 Hz
Operation Power Consumption	< 20 W
Eco Standby Power Consumption	< 0.5 W

Dimensions	
- Main Unit (W x H x D)	180 x 121 x 227 mm
- Speaker Box (W x H x D)	120 x 195 x 143 mm
Weight	
- Main Unit	1.54 kg
- Speaker Box	0.81 kg x 2

Bluetooth

- Press to select the **Bluetooth** source.
→ [BT] (Bluetooth) is displayed, and the Bluetooth indicator flashes blue.
- On your Bluetooth device, enable Bluetooth function and search for devices.
- In the device list, select **Philips BTM1360**; input '0000' if a password is required.
→ After successful pairing and connection, the Bluetooth indicator turns solid blue, and the product beeps twice.
- Play audio on the connected device.

Note:

- If you fail to search for "Philips BTM1360" or cannot pair with this product, press and hold **SOURCE/PAIRING** (or on the remote control) for three seconds until you hear a beep sound to enter Bluetooth pairing mode.
- Press and hold on the main set for 8 seconds to clear Bluetooth pairing history.

Clock

- CLOCK
- ←
- CLOCK

Repeat steps 2-3 to set hour and minute

Audio In

- AUDIO IN
- AUDIO

CD/MP3-CD

- CD
- CD
- ▶
-

Control play

	Start, pause, or resume play.
	Stop play.
	Select an album or a folder.
	Press to skip to the previous or next track. Press and hold to search backward/forward within a track.
	Play a track or all tracks repeatedly.
	Play tracks randomly.
	Increase or decrease the volume.
	Mute or unmute sound.
SOUND	Select a preset sound equalizer.
DISPLAY	Adjust display brightness.

Sleep Timer

- SLEEP
- ←
- SLEEP

Make sure that you have set the clock correctly.
Repeat steps 2-3 to set minute, select a source, and set the alarm volume.

Sleep Timer

Press to select the sleep timer period.
When [OFF] (off) is displayed, the sleep timer is deactivated.

FM

Note: For optimal reception, fully extend and adjust the position of the antenna.

Tune to FM radio stations

- FM
- A
- B

Store FM radio stations automatically

- FM
- PROG

Store FM radio station manually

- FM
- ←
- PROG
- PROG

Select a preset FM radio station

Warnings

User Manual

To download the full user manual, visit www.philips.com/support.