

Enterprise Grade Security and Performance For Remote Monitoring and Management



Integrated Security

The IM4200 family of advanced console servers are built with security in mind, features such as in-built enterprise class firewall, FIPS 140-2 module, SSH v2, SSLv3 Ciphers, OpenVPN, IP Sec, Radius SecureID, IP Filtering and per port access list to give greater control over security to vital IT assets in the datacenter.

Console Management Features

The IM4200 is available in 8, 16, 32 and 48 Port Models with three pinout options including Cisco compatible RJ45 ports for easy, quick installation. Features such as 16gb flash memory for offline logs, TFTP storage for running configurations, embedded AJAX terminal, pattern-match alerting and event notification help reduce downtime and expedite problem resolution. Powered by a robust Linux core, the IM4200 open source platform enables users to embed custom scripts, custom alerts and embed security agents.

Out-Of-Band Management, Access Anytime from Anywhere

The IM4200 is equipped with a built in modem for dial-in, dial-back and heart beat monitor for automatic failover. We also support broadband failover and 3G cellular out of band access. The IM4200 is equipped with the ability to "call home" from behind a firewall to our CMS/VCMS management platform. This unique ability gives systems administrators the ability to monitor, access and manage all downstream console servers and attached devices from one single screen.

Environmental Monitoring Device with two inputs for external sensors
Up to 48 Sensors per unit



- Access via Internet
- Out-Of-Band
- Automatic Failover

Product Snapshot:

- 8, 16, 32, 48 Serial Ports
- Dual Ethernet Interfaces
- Dual Power AC or DC
- Built in V.92 Modem
- 16 Gig USB Flash
- Clustering 1000 Per IP
- Programmable Linux
- PDU Management
- UPS Management
- IPMI Server Reboot
- Manage Service Processors
- Pattern Match Alerting
- Nagios Checks

Power Monitoring and Management

Opengear console servers are outfitted with a vendor neutral toolset to control the widest selection of third party PDU and UPS devices available on the market. The IM4200 is embedded with both Network UPS Tools and PowerMan to manage both serial and snmp based UPS systems and switched PDU's. Our power management and monitoring abilities include extensive alerting, power event notification, graceful shutdowns, ping detect reboots, DC line voltage and embedded hotkey for switched PDU's.

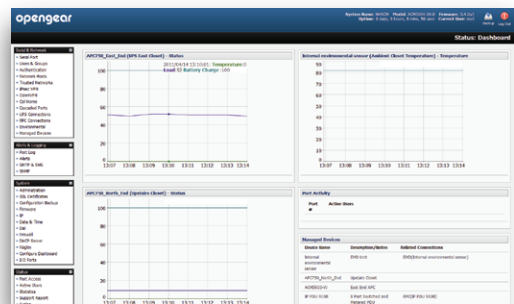
Simple Browser Interface, Installs in Minutes

All Opengear console servers are equipped with an easy to use web interface to manage a comprehensive set of features and options. For larger installations we include the ability to rapidly deploy units using the web interface, USB drive or command line scripts.

RS-232 Serial Console Ports



Finalist
"Best Management Tool"



Security and Authentication

- Secure Shell SSH V2 & V3
- AAA TACACS+, RADIUS and LDAP authentication
- IP SEC VPN, OpenVPN
- Enterprise grade firewall with forwarding and masquerading
- PAP/CHAP authentication (dial up)
- Per port user access lists and dial back support
- Local authentication
- System event Syslog
- SSH port and IP forwarding support, IP aliasing
- IP packet filtering, IPV6

Serial Console Port Management

- Windows 2003 Server EMS support
- SUN / Solaris ready (no inadvertent breaks)
- Break over SSH support
- Port monitoring, triggers and alarms
- Offline data logging (Syslog, NFS, CIFS)
- Online data buffering
- Multiple users per port (with port sniffing)
- Telnet/SSH/Raw/RFC2217 TCP connect
- Clustering up to 1000 ports per IP

Tunneled LAN Port Management

- Secure SSH tunneling and NAT port redirection
- Secure RDP/VNC/X access to Windows /Linux/Sun
- Secure HTTP/HTTPS to browser controlled appliances
- Service processor access (IPMI, ILO, LOM, RSA)
- Extensible to support custom services /ports
- Configurable point-n-click SDTConnector client
- User access limited by host, and by SDT service
- Unlimited number of LAN computers/appliances
- Unlimited number of connections per SSH session

Power Management

- Embedded Network UPS Tools & PowerMan
- UPS/RPC monitoring, graphing, alarms
- Connect Serial, SNMP and USB connected UPS/RPC

IM4200 System Management

- Secure Web management (HTTP, HTTPS)
- Store config on removable USB Flash
- Command Line interface (Linux Shell)
- ARP-PING (IP assignment)
- SNMP, SMS, and email alerts

Other Protocols Supported

- DHCP for dynamic IP assignment
- NTP for time synchronization
- PPP for dial up access
- NAT port redirection
- RFC2217- Port Redirection
- Network UPS Tools

Upgrades

- Flash upgradeable - free from online FTP site
- FTP, TFTP client for file transfer

Models

- IM4208-X: 8 RJ-45 RS-232 serial port (2400 to 230,400bps)
- IM4216-X: 16 RJ-45 RS-232 serial ports (2400 to 230,400bps)
- IM4232-X: 32 RJ-45 RS-232 serial ports (2400 to 230,400bps)
- IM4248-X: 48 RJ-45 RS-232 serial ports (2400 to 230,400bps)
- 1 DB-9 RS-232 local / modem port (2400 to 115,200 bps)
- 2 RJ-45 10/100 Ethernet ports, 1 RJ-11 V.92 Modem, 3 USB Type 2 Ports

Cables Included

2 RJ-45 CAT5 cables (6 ft), 2 RJ-45 to DB-9 adapters (straight & cross-over)

Environmental

Ambient operating: 5°C to 50°C (41°F to 122°F), Humidity: 5% to 90%
Storage: -30°C to +60°C (-20°F to +140°F)

Emissions

FCC Part 15 Subpart B Class A Radiated Emissions 30MHz – 1000MHz
ICES-003 Issue 4 February 2004 Class A Radiated Emissions 30MHz – 1000MHz
AS/NZS CISPR 22: 2004 Class A Radiated Emissions 30MHz – 1000MHz
EN55022: 1998 + A1: 2000 + A2: 2003 Class A Radiated Emissions 30MHz – 1000MHz

Immunity

EN55024: 1998 +A1: 2001 +A2: 2003
IEC61000-4-2: 1995 ESD 8kV Air Discharge (Direct), 4kV Contact Discharge (Direct/Indirect)
IEC61000-4-3: 1995 Radiated Immunity 3.0V/m, 1KHz AM Sine Wave at 80%
IEC61000-4-4: 1995 EFT/Burst 1.0kV Power Lines, 0.5kV I/O Lines
IEC61000-4-5: 1995 Surge Immunity 1.0kV Common Mode, 1.0 kV Differential Mode
IEC61000-4-6: 1996 Conducted Immunity 3.0 Vrms, 80% AM Modulated (1KHz)
IEC61000-4-11: 1994 Voltage Dips and Interrupts (>95%,0.5 periods), (30%,25 periods), (>95%,250 periods)

Isolation

Serial Port: 4 kV ESD protection on RS232 and RS422/485 transceivers
Ethernet Port: 1500 VAC isolation shielded with shield connected to chassis ground for signal integrity and ESD protection

Regulatory

FCC Part 15 A UL 1950 TUV C-Tick
CE (EN55022 A, EN55024, EN60950) RoHS compliant
Security features to support NERC CIP standards
FIPS 140-2 Validated Module Certificate #1051

Power, Size & Weight

AC - Internal dual socket universal 100-240V AC
DC - Dual 48V External +/- 48VDC
Power Consumption less than 30W
17 x 12.3 x 1.75 in (44 x 31.3 x 4.5 cm), 11.8 lb (5.4 kg)

CPU/Memory

166MHz ARM (Micrel KS8695P) 64MB SDRAM
16MB embedded flash, 16 Gig USB flash

MTBF

IM4208/IM4216/IM4232/4248: 150,000

Alternate Pinouts Available

Cisco Pinout -Straight through CAT5 cable directly Cisco RJ45
Cisco Rolled -Rolled CAT5 cable directly Cisco RJ45

Ordering Information

Dual AC Power Supply Models

Classic Pinout	Cyclades Pinout	Cisco Pinout	Serial Ports	Modem	Cellular
IM4208-2-DAC-X0	IM4208-2-DAC-X1	IM4208-2-DAC-X2	8	V.92 Modem	X2 Only
IM4216-2-DAC-X0	IM4216-2-DAC-X1	IM4216-2-DAC-X2	16	V.92 Modem	X2 Only
IM4232-2-DAC-X0	IM4232-2-DAC-X1	IM4232-2-DAC-X2	32	V.92 Modem	X2 Only
IM4248-2-DAC-X0	IM4248-2-DAC-X1	IM4248-2-DAC-X2	48	V.92 Modem	X2 Only

Dual DC Power Supply Models

Classic Pinout	Cyclades Pinout	Cisco Pinout	Serial Ports	Modem	Cellular
IM4208-2-DDC-X0	IM4208-2-DDC-X1	IM4208-2-DDC-X2	8	V.92 Modem	N/A
IM4216-2-DDC-X0	IM4216-2-DDC-X1	IM4216-2-DDC-X2	16	V.92 Modem	N/A
IM4232-2-DDC-X0	IM4232-2-DDC-X1	IM4232-2-DDC-X2	32	V.92 Modem	N/A
IM4248-2-DDC-X0	IM4248-2-DDC-X1	IM4248-2-DDC-X2	48	V.92 Modem	N/A

For regional shipping codes please append model number with destination country.
Example "IM4208-2-DDC-X2-US" for USA. Available country codes, -US, -AU, -UK, -EU, -JP



IM4208



IM4216



IM4232



IM4248



Rear View
Dual AC Power



Rear View
Dual DC Power



Rear View
-G Internal Cellular

