

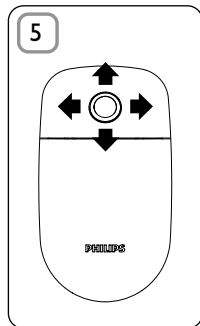
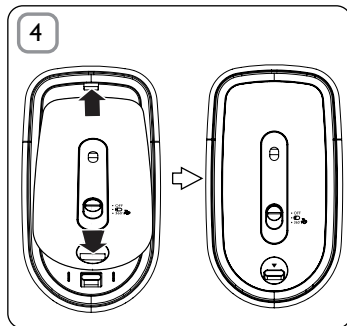
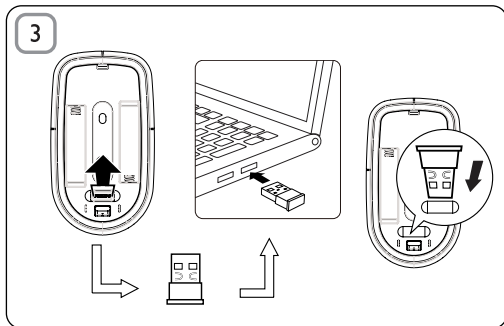
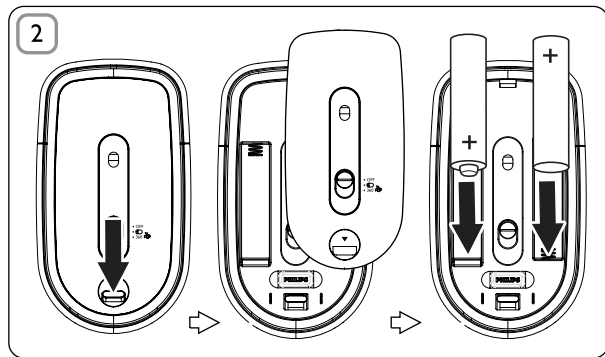
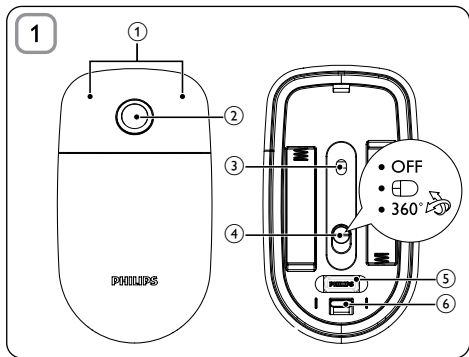
Register your product and get support at
www.philips.com/welcome

Wireless notebook mouse
SPM7800



EN User manual

PHILIPS



1 Important

Electric-, Magnetic and Electromagnetic Fields (EMF)

1. Philips Royal Electronics manufactures and sells many products targeted at consumers, which, like any electronic apparatus, in general have the ability to emit and receive electromagnetic signals.
 2. One of Philips' leading Business Principles is to take all necessary health and safety measures for our products, to comply with all applicable legal requirements and to stay well within the EMF standards applicable at the time of producing products.
 3. Philips is committed to develop, produce and market products that cause no adverse health effects.
 4. Philips confirms that if its products are handled properly for their intended use, they are safe to use according to scientific evidence available today.
 5. Philips plays an active role in the development of international EMF and safety standards, enabling Philips to anticipate further developments in standardization for early integration in its products.
-

Your product is designed and manufactured with high quality materials and components, which can be recycled and reused.



When this crossed-out wheeled bin symbol is attached to a product it means that the product is covered by the European Directive 2002/96/EC.



Please inform yourself about the local separate collection system for electrical and electronic products.

Please act according to your local rules and do not dispose of your old products with your normal household waste. Correct disposal of your old product helps to prevent potential negative consequences for the environment and human health.


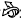
Your product contains batteries covered by the European Directive 2006/66/EC, which cannot be disposed with normal household waste. Please inform yourself about the local rules on separate collection of batteries because correct disposal helps to prevent negative consequences for the environmental and human health.



2 System requirements

- Windows® 7, Vista, XP; Mac OS® X 10.2.8 and above
- USB port

3 Function overview

- ① Left and right click buttons
- ② 360° TouchControl™ (with battery indicator under it)
- ③ Laser sensor
- ④ Mode switch
 - **OFF:** Power off
 -  Use as a normal mouse
 -  Switch on 360° TouchControl™
- ⑤ Nano Dongle
- ⑥ Eject switch

Battery status	Indicator status
Power on	On for 1 second
Power low	Continuous blinking

Tip: 1. You can use 4-way scrolling on Windows XP® or Vista.
2. To use the 4-way scrolling on Windows® XP, please download the 4-way scrolling driver from the Philips website: Log onto www.philips.com/welcome and type the product number to search for the relevant driver.

4 Troubleshooting

- Ensure that the Nano Dongle of your mouse is properly plugged into a USB port on your computer.
- Ensure that there is power in the battery.
- Ensure that batteries are inserted with correct polarity (+/-) as indicated.
- Ensure that you are not using the product on glass.
- If no response from the product, ensure that you use the product within effective range.

FCC - Notice of compliance

This device complies with Part 15 of the FCC Rules. Operation is subject to the following two conditions:

1. this device may not cause harmful interference, and
2. this device must accept any interference received, including interference that may cause undesired operation.

Note:

This equipment has been tested and found to comply with the limits for a Class B digital device, pursuant to part 15 of the FCC Rules. These limits are designed to provide reasonable protection against harmful interference in a residential installation. This equipment generates, uses, and can radiate radio frequency energy and, if not installed and used in accordance with the instruction manual, may cause harmful interference to radio communications. However, there is no guarantee that interference will not occur in a particular installation. If this equipment does cause harmful interference to radio or television reception, which can be determined by turning the equipment off and on, the user is encouraged to try to correct the interference by one or more of the following measures:

- Relocate the receiving antenna.
- Increase the separation between the equipment and receiver.
- Connect the equipment into an outlet on a circuit different from that to which the receiver is connected.
- Consult the dealer or an experienced radio/TV technician for help.

FCC - Remarques sur la conformité

L'appareil répond aux normes FCC, Part 15.

Fonctionnement soumis aux deux conditions suivantes:

1. Cet appareil ne doit pas provoquer d'interférences nuisibles, et
2. Cet appareil doit accepter toute interférence reçue, y compris les interférences susceptibles de provoquer un fonctionnement peu satisfaisant.

Remarque:

Cet équipement a été testé et a été certifié conforme aux limites imposées pour un appareil numérique de Classe B, conformément à la partie 15 des règlements FCC. Ces limites sont définies aux fins d'assurer une protection raisonnable contre les interférences nuisibles dans une installation résidentielle. Cet équipement génère, utilise et émet des fréquences radio qui, en cas d'une mauvaise installation ou d'une utilisation non-conforme aux instructions de ce manuel d'utilisation peuvent causer des interférences nuisibles aux communications radio. Il n'y a toutefois aucune garantie que des interférences nuisibles ne se produiront pas dans une installation donnée. Si cet équipement cause des interférences nuisibles avec votre poste radio ou de télévision, ce que vous pouvez déterminer en éteignant et en rallumant votre équipement, il est conseillé à l'utilisateur d'essayer de pallier à ces interférences nuisibles en prenant l'une ou l'autre des mesures suivantes:

- Changez la position de l'antenne de réception.
- Augmentez la séparation entre l'équipement et le récepteur.
- Branchez l'équipement sur une source d'alimentation différente de celle sur laquelle le récepteur est branché.
- Consultez votre distributeur ou un technicien qualifié en la matière pour assistance.



© Royal Philips Electronics N.V. 2009
All rights reserved.

Specifications are subject to change
without notice.

Trademarks are the property of
Koninklijke Philips Electronics N.V. or
their respective owners

Printed in China
V1.1

CE 0700



100% recycled paper
100% papier recyclé