



IPL - Hair removal device

- 4 intelligent attachments
- Underarms, bikini, body, face
- With SmartSkin sensor
- Both cordless and corded use

BRI956/60

Enjoy 6 months* of hair-free smoothness

Intelligent attachments designed for best results

Philips Lumea Prestige, our most powerful IPL yet, designed for your body's curves and easiest at-home experience. Uniquely curved, intelligent attachments perfectly fit your curves and adapt the treatment programs for each body area.

Benefits

Continuous smooth skin with Lumea IPL technology

- Expert IPL technology at-home, developed with dermatologists
- Proven safe and effective treatment
- Suitable for a wide variety of hair and skin types
- Use either cordless or corded

Specialized treatment of different body areas

- Intelligent attachments adapt the treatment of each area
- Underarm medium-sized attachment with curved-out design
- Bikini area curved attachment with extra filter

- Large body attachment with curved-in design
- Precise face attachment with extra filter

Maximum freedom, minimum hassle

- With SmartSkin sensor
- FREE Lumea App for a personal coach at your fingertips
- No replacement parts, no hidden costs

PHILIPS

Features

Lumea prevents hair regrowth*



IPL stands for Intense Pulsed Light. Philips Lumea applies gentle pulses of light to the hair root, putting the follicle into a resting phase. As a consequence, the amount of hair your body grows gradually decreases. Repeating the treatment leaves your skin beautifully hair free and touchably smooth. Treatment to prevent hair regrowth is safe and gentle, even on sensitive areas. Philips Lumea is clinically tested and developed with dermatologists for easy and effective treatment, from the comfort of your own home.

Proven effectiveness



Objective studies show up to 92% hair reduction in as little as 3 treatments**. The first 4 treatments must be carried out every 2 weeks, after which you should already be able to see the desired results. To maintain your results, simply touch up every 4 weeks. After just 8 touch up treatments you can be hair-free for 6 months*. To enlarge this picture, please click on the image in the image gallery at the top of this page.

Suitable hair and skin types



Philips Lumea Prestige works effectively, easily and safely on a wide variety of hair and skin types. It works on naturally dark blonde, brown and black colored hairs and on skin tones from very white to dark brown. As with other IPL based treatments, Philips Lumea cannot be used to treat white / grey, light blonde or red hair and is not suitable for very dark skin. This is due to the high contrast required between the pigment in hair color and pigment in the skin tone.

Treatment of body areas



Your hair and your curves vary across your body, so each area needs treating in a different way to ensure the best results. Philips Lumea Prestige has uniquely curved intelligent attachments for the body (legs, arms, stomach) and face (upper lip, chin). Each intelligent attachment differs by combinations of shape, window size, filter, and triggers a tailored treatment program for specific body part, when added to the device. This mix of considered design and bespoke treatment enables effective and safe treatment even on delicate or sensitive areas.

Underarm attachment



The specially curved attachment is designed to treat hard-to-reach underarm hair, with a window size of 3 cm². When the intelligent attachment is added to the device it triggers a tailored underarm treatment. 86% of women satisfied with hair reduction on underarms***.

Bikini attachment



This attachment is curved with a 3cm² window size and has an extra transparent filter. The light treatment is adjusted automatically for the bikini area once the intelligent attachment is added to the device. 78% of women satisfied with hair reduction in bikini area***.

Body attachment



The body attachment has our largest treatment window (4.1cm²) so it's perfect for a fast treatment on large body areas like legs, arms and stomach. The curved-in design closely follows body contours for optimal skin contact. When added to the device this intelligent attachment automatically triggers a tailored treatment suitable for these body areas. 83% of women satisfied with hair reduction on legs***.

Face attachment



To gently but effectively treat hair on your face, the attachment has been carefully designed with a small, 2cm² window, that's also flat for precise use on the upper lip, chin or jawline. It has an extra integrated filter and when added to the device the intelligent attachment will automatically adjust the light treatment for your face. 84% of women satisfied with hair reduction on face***.

Lumea Prestige

SmartSkin sensor



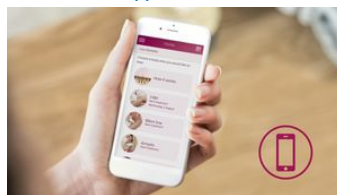
Philips Lumea Prestige has 5 energy settings and makes it easy for you to choose the right one thanks to the Smart Skin sensor. The SmartSkin sensor advises the best setting for your skin tone, anytime you want.

Both cordless and corded use



Philips Lumea Prestige can be used both cordless and corded. For big areas like legs we recommend to use the device corded for a faster treatment without interruption. When treating smaller or hard to reach areas like the face, underarms or bikini area, use the device cordless so you can enjoy full freedom of movement.

FREE Lumea App



The Lumea App is free to download and offers a unique and personalized IPL experience – just for you. It is your very own personal coach to ensure you are getting the most out of your Lumea and using it in the correct way to achieve long-lasting results. The App helps you create your personalized treatment schedule per body area, with tips and advice during each treatment. All you need to do is check the app regularly to make sure you are up to date with any notifications or reminders.

No replacement parts needed



Philips Lumea is a complete solution that comes ready to work, straight out of the box. No refill cartridges or gels needed.

Specifications

[field not found 'disclaimer_text']

Application areas

Body areas	Arms Legs Stomach Chin Upper lip Jawline Armpits Bikini
Face areas	
Sensitive areas	

Face areas 1,5 min

Technical specifications

High performance lamp Delivers > 250,000 flashes

Power

Voltage 100-240 V

Items included

Instructions for use User manual
Storage Luxurious pouch
Adapter 19.5V / 4000mA

Service

Warranty 2 years global warranty

Packaging dimensions

Height 19.00 cm
Width 26.50 cm
Depth 14.00 cm
Nett weight 1.00 kg
Gross weight 1.64 kg
EAN 08710103779353
Number of products included 1
Country of origin SI
Harmonised Systems Code 854370

Technical specs. attachments

Body treatment attachment	Shape: Convex curved Window size: 4.1 cm2 Tailored treatment for body
Face treatment attachment	Shape: Flat Window size: 2 cm2, extra filter Tailored treatment for face
Armpits treatment attachment	Shape: Concave curved Window size: 3 cm2 Tailored treatment for armpits
Bikini treatment attachment	Shape: Concave curved Window size: 3 cm2, extra filter Tailored treatment for bikini

Application mode

Slide and Flash	For quick application
Stamp and Flash	For treatment on small areas
Cordless / cordless use	Both cordless and corded use

Safety and adjustable settings

Integrated UV filter	Protects skin from UV light
5 light energy settings	Adjustable to your skin type
Integrated safety system	Prevent unintentional flashing
Skin Tone sensor	Detects your skin tone
SmartSkin sensor	The right setting on demand

Application time

Lower legs	8,5 min
Armpit	2,5 min
Bikini line	2 min

Outer Carton

Length 28.80 cm
Width 20.00 cm
Height 27.40 cm
Gross weight 3.47 kg
EAN 18710103779350
Number of consumer packagings 2

* Median result of legs: 78%, after 12 treatments, objective study on 48 women in the Netherlands and Austria

** Up to 92% hair reduction after 3 treatments when following the treatment schedule, measured on legs, individual results may vary

*** Study conducted in Netherlands and Austria, 46 women, after 3 treatments on armpits, bikini, legs, after 2 treatments on face



data subject to change
2018, December 1

Version: 5.1.1
EAN: 08710103779353

© 2018 Koninklijke Philips N.V.
All rights reserved.

Specifications are subject to change without notice. Trademarks are the property of Koninklijke Philips N.V. or their respective owners.

www.philips.com