

Lenovo V310

POWER, SECURITY, AND SIMPLICITY FOR SMALL BUSINESSES

The Customizable Laptop That Offers Future-Proof Performance And Reliability

Designed for businesses, the Lenovo™ V310 is dependable for years to come and easy to use from day one. Its powerful Intel® processor offers smooth performance, while featuring a one-piece keyboard design, which reduces the buildup of dust and dirt around the edge of the keyboard which normally degrades the performance of your laptop over time. A 180-degree hinge offers flexible viewing angles for its anti-glare display, while the Ultrabay allows for a DVD drive, or a second battery for up to 12 hours of total battery life. The Dual Drive option allows you to have the optimum blend of SSD speed and HDD capacity.



WHY YOU SHOULD BUY THE LENOVO V310



Future-Proof Performance

Powered by up to 7th Gen Intel® Core™ processor* and high-speed DDR4 memory, the Lenovo V310 ensures smooth computing for years to come.



Design Innovation

Boasting a slim 0.9-inch design, the Lenovo V310 is as functional as it is stylish. It features a one-piece gapless keyboard to protect against dust and an anti-glare display with 180-degree hinge to offer the best viewing angle in any situation.



Configurable Options for Added Versatility

Thanks to its innovative Ultrabay, the Lenovo V310 lets you choose between a DVD drive, or a second battery for extended battery life. Choose between high-capacity HDD, ultra-fast SSD storage, or SSD plus HDD combined that will make opening applications and files much faster than your old laptop.



Built for Business

Get business-class connectivity and security features including optional fingerprint reader and integrated TPM that works with Windows 10 Bitlocker to secure your passwords.

* Available in August 2016.

WHO NEEDS THE LENOVO V310?

- 1** Business users who want a superior balance of performance and future-proof value
- 2** Mobile workers who need the extended battery life of the optional second battery
- 3** Collaborative workers who will make the most of the 180-degree lie-flat hinge



www.lenovopartnernetwork.com/us
www.lenovopartnernetwork.com/ca

Lenovo™

Lenovo V310

SPECIFICATIONS

Lenovo V310

PERFORMANCE

Processor

Intel® Core™ i7-7500U, i5-7200U, i3-7100U, i7-6567U, i7-6500U, i5-6267U, i5-6200U, i3-6100U
Intel® Pentium™ 4405U, 3855U

Operating System

Windows 10 Pro
Windows 10 Home

Graphics

Intel Integrated Graphics
AMD Radeon R5 M430 2GB VRAM

Webcam

720p

Memory

Up to 16GB DDR4 memory

Storage

Optional dual drive,
up to 128GB SSD + 1TB HDD

Audio

Dolby® Advanced Audio™,
2 stereo speakers

Battery life (MobileMark® 2014)

Up to 12 hours (base battery +
second battery)
Up to 6 hours (base battery)

ODD

Optional DVD Rambo

SECURITY

Fingerprint Reader

Optional

TPM (Trusted Platform Module)

Integrated

DESIGN

Display

FHD (1920 x 1080) Anti-Glare Display (14"/15.6")
HD (1366 x 768) Anti-Glare Display (14"/15.6")

Dimensions (WxDxH)

343 x 247 x 22.7mm (14")
380 x 262 x 22.9mm (15")

Weight

Starting from 1.6 kg (14")
Starting from 1.85 kg (15")

SOFTWARE

Lenovo Business Vantage

Lenovo Companion

Lenovo OneKey® Recovery

Lenovo Security Suite

Lenovo Settings

McAfee®

Photo Master



RECOMMENDED SERVICES

Lenovo offers a comprehensive portfolio of services to support and protect your investment. Succeed with substance and let Lenovo Service support you all the way.

PRIORITY TECHNICAL SUPPORT

Makes your priority, our priority, 24x7 priority call routing to advanced-level technicians, electronic incident tracking, and escalation management services.

WARRANTY UPGRADES—ON-SITE AND NEXT BUSINESS DAY

Maximizes PC uptime and productivity by providing convenient and fast repair service at your place of business.

WARRANTY EXTENSIONS (1-3 YEARS TOTAL DURATION)

This fixed-term, fixed-cost service helps accurately budget for PC expenses, protect your valuable investment, and lower the cost of ownership over time.

ACCIDENTAL DAMAGE PROTECTION

Avoid the hassles of unexpected repair costs. Provides coverage for non-warranted damage incurred under normal operating conditions, such as minor spills, drops, or damage to the integrated screen.

KEEP YOUR DRIVE

Retain your drive if it should happen to fail, giving you the peace of mind of knowing that your valuable data is secure.

ASSET TAGGING

Systems come equipped with a professional, flexible asset tag based on your exact specifications. PCs are easily identifiable and trackable right out of the box.

OPTIONS AND ACCESSORIES



Lenovo 500
Extra Bass In-ear
Headphone



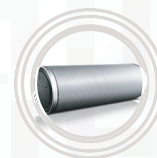
Lenovo 300
Wireless
Compact Mouse



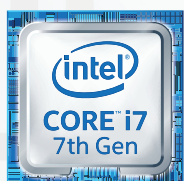
Lenovo UHD
F309 1TB
Portable Secure
Hard Drive



Lenovo Casual
Backpack B200



Lenovo 500
2.0 Bluetooth
Speaker



www.lenovopartnernetwork.com/us
www.lenovopartnernetwork.com/ca

Lenovo reserves the right to alter product offerings and specifications at any time, without notice. Lenovo makes every effort to ensure accuracy of all information but is not liable or responsible for any editorial, photographic or typographic errors. All images are for illustration purposes only. For full Lenovo product, service and warranty specifications visit www.lenovo.com. Lenovo makes no representations or warranties regarding third party products or services. **Trademarks:** The following are trademarks or registered trademarks of Lenovo: Lenovo, the Lenovo logo, ideapad, ideacentre, yoga and yoga home. Microsoft, Windows and Vista are registered trademarks of Microsoft Corporation. AMD, the AMD Arrow logo and combinations thereof are trademarks of Advanced Micro Devices, Inc. in the United States and/or other jurisdictions. Other company, product and service names may be trademarks or service marks of others. Battery life (and recharge times) will vary based on many factors including system settings and usage. Visit www.lenovo.com/lenovo/us/en/safecomp/ periodically for the latest information on safe and effective computing. ©2016 Lenovo. All rights reserved.

Lenovo™