

Register your product and get support at  
[www.philips.com/welcome](http://www.philips.com/welcome)

Philips Presenter  
SNP3000

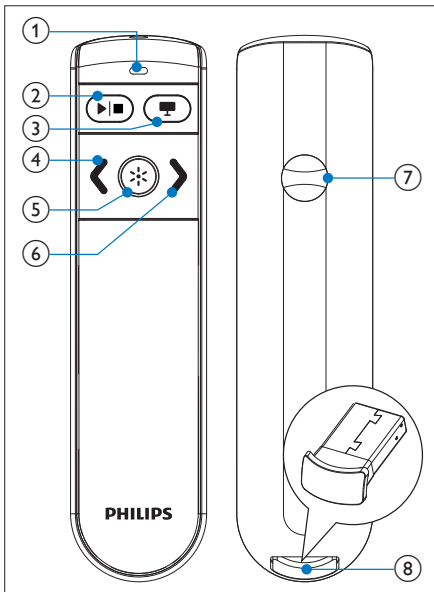


EN User manual

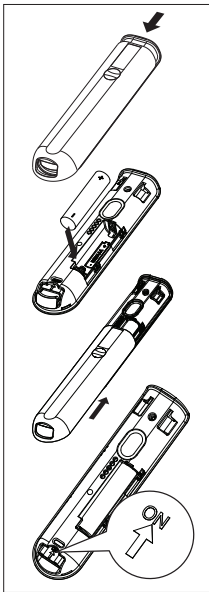
---

**PHILIPS**

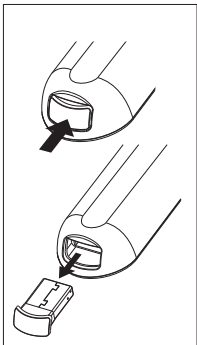
1



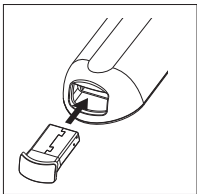
2



3



4





LASER LIGHT  
DO NOT STARE INTO BEAM  
CLASS 2 LASER PRODUCT

Wavelength : 645 - 660nm  
Maximum Power < 1mW  
IEC 60825-1:1993 + A1:1997 + A2:2001  
EN 60825-1:1994 + A2:2001 + A1:2002



**CAUTION**  
**RISK OF EXPLOSION IF BATTERY IS REPLACED**  
**BY AN INCORRECT TYPE.**  
**DISPOSE OF USED BATTERIES ACCORDING TO THE**  
**INSTRUCTIONS**

Complies with  
IDA Standards  
DB100486

## 1 Important

Your product is designed and manufactured with high quality materials and components, which can be recycled and reused.



When this crossed-out wheeled bin symbol is attached to a product it means that the product is covered by the European Directive 2002/96/EC.

Please inform yourself about the local separate collection system for electrical and electronic products.

Please act according to your local rules and do not dispose of your old products with your normal household waste. Correct disposal of your old product helps to prevent potential negative consequences for the environment and human health.

Your product contains batteries covered by the European Directive 2006/66/EC, which cannot be disposed with normal household waste. Please inform yourself about the local rules on separate collection of batteries because correct disposal helps to prevent negative consequences for the environmental and human health.

## 2 Overview of the product (Fig. 1)

- |  |                                    |
|--|------------------------------------|
| 1. LED indicator;  | 2. ▶ ■ Play/Stop;                  |
| 3.  (Blank screen);        | 4. < (Move to the previous slide); |
| 5.  Laser pointer button; | 6. > (Move to the next slide);     |
| 7. Battery compartment;  | 8. USB receiver (Dongle)           |

## 3 Switch on your Presenter (Fig. 2)

- 1 Open the battery compartment.
- 2 Insert 1 AAA battery with correct polarity (+/-) as indicated.
- 3 Push the slide selector to the **ON** position.
- 4 Close the battery compartment.

## When battery is installed:

- To switch on the Presenter, push the USB receiver into the Presenter and then remove the USB receiver from it.
- To switch off the Presenter, push the USB receiver to the end.

## 4 Auto-connect

- 1 Ensure that your notebook is switched on and active.
- 2 Ensure that your Presenter is switched on.
  - If the USB receiver is inserted into your Presenter, release the USB receiver from your Presenter (Fig. 3).
- 3 Plug the USB receiver into a USB host on your notebook.
  - ↳ Auto-connection starts.
  - ↳ If connection is successful, the LED indicator indicates 1 long blink.
  - ↳ If connection fails, the LED indicator indicates 2 long blinks.
  - ↳ The LED blinks upon every successful communication between the Presenter and the USB receiver.

### \* Tip

- After use, insert the USB receiver into your Presenter for storage (Fig. 4).
- Upon the first installation on Mac, **Keyboard Set Assistant** may appear and prompt that the keyboard cannot be identified. Just click **Continue** to finish the installation, and then the Presenter will work accordingly.

## 5 Troubleshooting

---

No transmission.	Ensure that you use the Presenter within effective range.
Light on your Presenter blinks 3 times.	Replace battery on the Presenter.

---

---

Light on your Presenter  
does not blink.

Ensure that the Presenter is  
switched on.  
Replace battery on the Presenter.

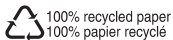
---



© 2010 Koninklijke Philips Electronics N.V.  
All rights reserved.

Specifications are subject to change  
without notice. Trademarks are the  
property of Koninklijke Philips Electronics  
N.V. or their respective owners.

UM\_V2.3



100% recycled paper  
100% papier recyclé