

SAMSUNG

SAMSUNG SMARTCAM

User Manual

SNH-V6430BNH

CE 0678 !

Samsung SmartCam

User Manual

Copyright

©2016 Hanuha Techwin Co., Ltd. All rights reserved.

Trademark

Each of trademarks herein is registered. The name of this product and other trademarks mentioned in this manual are the registered trademark of their respective company.

Restriction

Copyright of this document is reserved. Under no circumstances, this document shall be reproduced, distributed or changed, partially or wholly, without formal authorization.

Disclaimer

Hanuha Techwin makes the best to verify the integrity and correctness of the contents in this document, but no formal guarantee shall be provided. Use of this document and the subsequent results shall be entirely on the user's own responsibility. Hanuha Techwin reserves the right to change the contents of this document without prior notice.

SPECIFY SERVICE INSTRUCTIONS AND WARRANTY TERMS

This device complies with Part 15 of the FCC Rules.

Operation is subject to the following two conditions: (1) this device may not cause harmful interference, and (2) this device must accept any interference received, including interference that may cause undesired operation.

FCC CAUTION:

Any changes or modifications in construction of this device which are not expressly approved by the party responsible for compliance could void the user's authority to operate the equipment.

FCC NOTE:

The manufacturer is not responsible for any radio or tv interference caused by unauthorized modifications to this equipment. Such modifications could void the user's authority to operate the equipment.

This device complies with Industry Canada licence-exempt RSS standard(s). Operation is subject to the following two conditions:

- (1) this device may not cause interference, and
- (2) this device must accept any interference, including interference that may cause undesired operation of the device.

Operational Description

The operational description shall fulfil the requirements of Rule Part 2.1033(b)(4). The rule part requires, "A brief description of the circuit functions of the device along with a statement describing how the device operates. This statement should contain a description of the ground system and antenna, if any, used with the device".

The above requirement has been further interpreted by the FCC to mean that the description shall:

- a. be an operational or technical description of how the device operates, is modulated and meets requirements;
- b. describe the EUT completely. What is it (in plain English as well as technical terms)? Give a clear, concise functional description of device operation.
- c. always describe the signal, such as modulation type, pulse repetition rate, signal type and information being sent. Describe all modulation types and all data rates.

Instructions & Warranty

The manufacturer is not responsible for any loss or radio/TV interference caused by unauthorized modification of the product.

Such modification will void the warranty of the product as well as the user's right of use.

WARNING

- The product must be assembled and installed by an adult.
 - Before using, read all instructions on this manual thoroughly and follow operational instructions, warnings on this manual and printed on the product.
 - To avoid entangled power cord, do not place it around the baby bed or other infant furniture. Keep this product and its power cord out of children's reach.
 - Especially, the power cord should be installed carefully while keeping it out of children's reach.
 - Never use the product near bath tub, sink, washing machine and in wet basement to avoid moisture.
 - The product is not designed for medical monitoring, and requires a grown-up's protective supervision on its use.
 - To avoid overheating of the product, do not expose the product to direct sunlight; do not install or use near a heat source such as heater, radiator, cooking devices (ex: electric stove or oven) and other warming devices (ex: audio amplifier, TV, etc.).
 - Make sure to keep ventilated while using the product.
Avoid pillar or furniture that may block ventilation, when installing the product.
 - Make sure to use the power adaptor provided. If used with unidentified adaptor, it may damage the product. The power adaptor must be used with regular household electric supply.
 - Avoid sharp, pointed objects around the adaptor's cable, not to damage the cable.
 - Be warned and never hold the cable's stripped part when connecting / disconnecting the adaptor to/from the wall outlet.
 - To avoid entangled cable lines, avoid using cable extension for adaptor's power cord.
 - The product's servicing is allowed only to authorized Hanwha Techwin service personnel.
- When using the product for children's care, be careful to keep the product out of children's reach.
 - The product partially contains component which might cause respiration difficulty. Accessories and small parts of the product should be stored keeping out of children's reach.
 - The product is not designed to replace responsibility of human supervision on children.
 - The product is not equipped with device of immediate notification to adult with accidental/sudden children's move; it requires periodic checks and human supervision.
 - This appliance and its antenna must not be collocated or operation in conjunction with any other antenna or transmitter. A minimum separation distance of 20 cm must be maintained between the antenna and the person for this appliance to satisfy the RF exposure requirements.
 - Please note that the content of a micro SD card used for other purposes may be deleted when it is mounted in the camera.

Contents

GETTING STARTED

Features	5
What's Included	6
Part names and functions	7

INSTALLATION & NETWORK CONNECTION

Installation	9
Network Connection and Settings.....	11

MONITORING

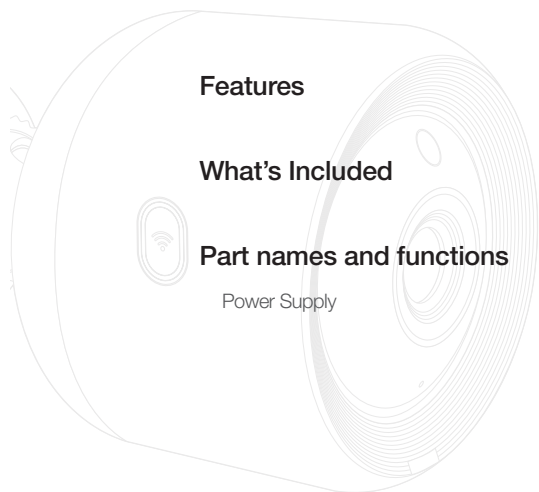
Registration	13
Live Video	18
Setup	21
Event Alarm	28
Playback	28
Information	30

APPENDIX

Specifications	31
Troubleshooting	34

GETTING STARTED

01



Features

What's Included

Part names and functions

Power Supply

Features

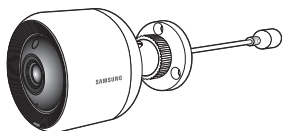
- **Easy to install**
 - The Wi-Fi Direct button allows easy connection to a wireless router.
 - Simply visit the home page (www.samsungsmartcam.com) and download and install the program without a separate installer program.
- **Remote monitoring**
 - Whenever and wherever if you are in the Internet enabled environment, remote monitoring is ready for you.
 - PC, laptop or smart phone can be used for monitoring.
- **Real-time alarm**
 - When a motion and sound are detected, your smartphone will generate real time alarms.
- **Saving in SD card**
 - When an event occurs, the user can save the video in their SD card.
- **Downloading a recorded video**
 - You can download motion detection/audio detection/manually recorded video to the user's PC or smartphone (Android).
- **Dustproof/Waterproof (weather resistant)**
 - Made to be weather resistant, it can be installed outside.
- **PoE connection**
 - You can easily connect the camera to the power supply and network using a PoE adapter, even in a demanding installation environment.
- **Used for indoor purposes**
 - You can install an outdoor camera for indoor purposes by connecting it with an indoor bracket.



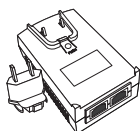
- Condensation may occur if you install the camera outdoors with the indoor bracket connected.

What's Included

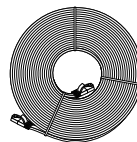
Check for components when opening the product package.



Camera



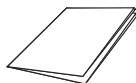
PoE adapter & power plug



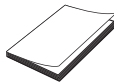
LAN cable (10M)



Quick Start Guide



Warranty Card



GPL Licence



Tapping screw

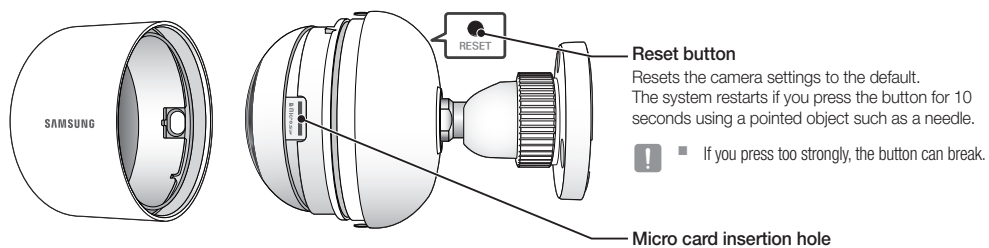
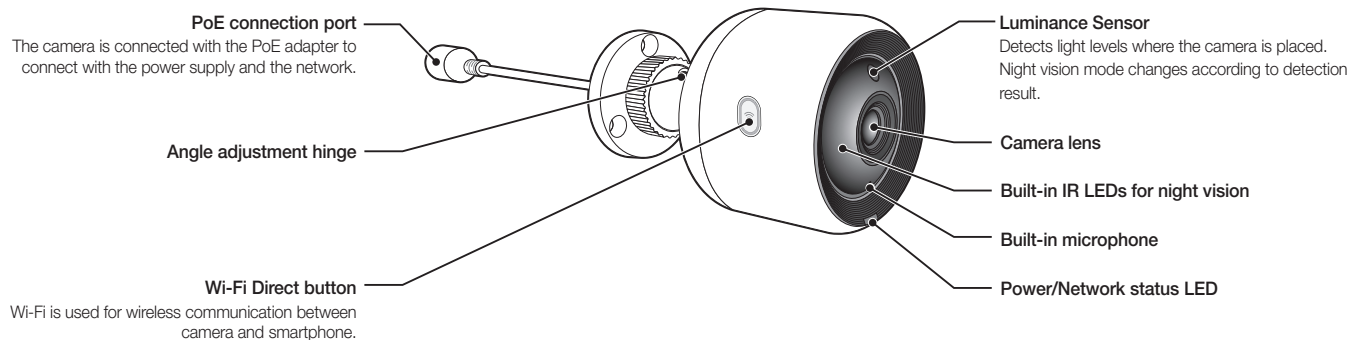


Plastic anchor



- Keep the packing container. You will need the serial number later to register the camera.

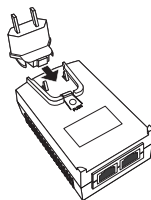
Part names and functions



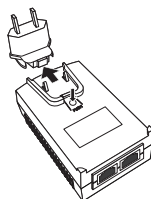
Power Supply

Using the PoE adapter

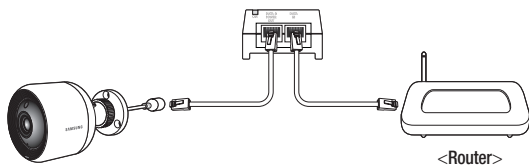
1. Push to insert the included PoE adapter in the power plug, as shown in the figure below.



2. To remove the power plug from the PoE adapter, press the **[PUSH]** section as shown in the figure below, and push up the power plug.



3. Connect the LAN cable from the PoE adapter **[DATA & POWER OUT]** socket to the PoE socket.



4. Connect the LAN cable from the PoE adapter **[DATA IN]** socket to the LAN port of the router.



- When connecting the camera wirelessly via Wi-Fi Direct, remove the LAN cable connecting the PoE adapter and the router.

5. Plug the PoE adapter into an electrical outlet.



- Use the PoE adapter and power plug that have been included with the camera. Using an incompatible adapter may cause the camera to malfunction.
 - It takes about 30 seconds to reboot the camera completely.
 - When the camera is turned on, the LED blinks red.

❖ LED status

LED indicator shows operational status with colors.

Refer to table below for detailed meaning of the LED indicator.

Color	Status
Red	Booting up
Red Blinking	Booting completed / Establishing network connection
Blue Blinking	Connecting to the network.
Blue	Local connection established
Green	Connection to server completed / Normal operation
Yellow/Orange	Waiting to connect with a wireless router
Purple	Updating firmware

INSTALLATION & NETWORK CONNECTION

Installation

Precautions	9
Installing on the wall and ceiling using screws	10
Adjusting the camera angle	11

Network Connection and Settings

Precautions	11
Connecting via network cable	12
Connection using the Wi-Fi Direct function	12

Installation

Precautions

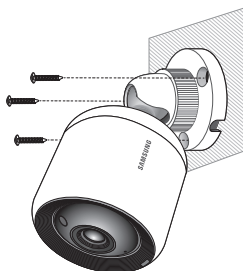
1. To facilitate monitoring, connect between the PoE adapter **[DATA IN]** port and the router.
2. In a location with a good Wi-Fi signal and no interference, use Wi-Fi communication.
3. Install the camera under the eaves to avoid the front of the lens from being exposed to rainwater. Avoid humid places as well.
4. Do not install the device under direct sunlight or other strong light sources. Place it where there is good visibility.
5. Do not install it in a place where there are a lot of obstacles.
6. When wiping the surface of the product, a clean and soft dry cloth should be used. Moist the dry cloth with water and wring it thoroughly to remove extra water.
(Do not use cleaners containing alcohol or solvents, detergents containing surface active ingredients, and skin care products or oil, as they can cause damage or deformation of the product.)
7. Do not install the product in places where there are or may be chemicals or traces of oil. Cooking oils like soybean oil can cause damage or deformation of the product, so please do not install the product near the kitchen or the kitchen counter. This may cause damage to the product.
8. Please be careful not to get chemical substances on the surface of the product when installing the product.
Some detergents or chemical solvents like adhesives can cause serious damage to the surface of the product.
9. The function and performance of the product may not be guaranteed if the product is not installed/uninstalled by the recommended procedure.

Installing on the wall and ceiling using screws

1. Take out the screws (M3xL20) and anchors (Φ5x25mm).

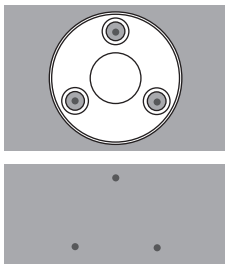
When installing on a wooden wall

2. Fix the bracket to the wall using screws, as shown in the next image. Using a Phillips screwdriver, fasten screws in 3 screw holes on the wall on which the camera is to be installed.



When installing on a concrete wall

2. Fix the bracket on the wall using screws and anchors. First, mark the wall on which the camera is to be installed as shown in the figure.

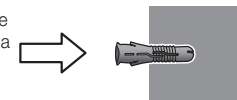


3. On the mark, drill a hole to a depth of about 3cm in the wall using a drill bit and drill with a 5mm diameter for concrete. Remove any debris remaining in the hole after drilling.

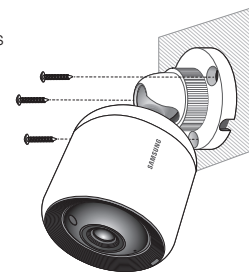
! Use caution when drilling to avoid injury.



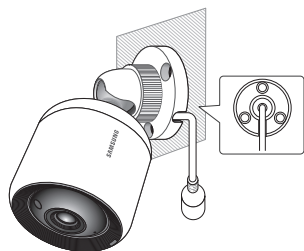
4. Insert an anchor in each of the 3 holes for the screws, then hit the back of the anchor with a hammer or a rubber mallet until it is completely inserted.



5. Insert a screw in each of the 3 holes in the wall, and tighten the screws using a Phillips screwdriver.
6. Connect the PoE adapter to the camera.

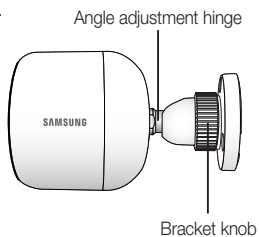


- ! Insert the cable through the hole at the bottom of the bracket to prevent the cable from being pressed when installing the camera.



Adjusting the camera angle

1. Turn the bracket knob counter-clockwise.
2. Adjust the angle adjustment hinge to set the desired camera angle.
3. Turn the bracket knob clockwise to fasten.



Network Connection and Settings

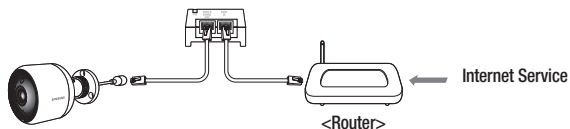
Precautions

- The cable connecting the router to the camera should have a length of 70m or less (based on CAT5e LAN cable)
- The wireless network access may fail, depending on the communications environment.
In this case, a wired connection is recommended.
- For details about the network settings and password, contact your network administrator or service provider.
- For a specific Internet service requiring user authentication, you may not access the service. If this is the case, contact the service provider.
- Do not access the unauthorized network.
- The farther the distance from the Wireless Access Point, the longer time the network connection may take.
- If you fail to access the selected wireless network, try a different Wireless Access Point to make access.
- For more information about the router or the wireless connection, refer to the documentation of the router or contact the router manufacturer.
- If the camera is connected to a multiple-Wireless Access Point network environment, some video packets may be lost, depending on the network traffic load.
- According to the network policy (blocking UDP) of the service provider, the video transmission can be limited to 7 minutes.
For more details, refer to the descriptions on page 20, <Relay Mode>.
- In addition to the above two situations, you may encounter a network delay or interruption due to the network conditions.
- Some hubs can have compatibility issues.

Connecting via network cable

If a wireless router is not available, connect a home router directly to the PoE adapter to which the camera is connected using a LAN cable.

1. Turn the power on and the LED will turn red. The red light will flicker when bootup is complete.
2. Connect a home router to the PoE adapter connected with the camera using a LAN cable as shown below.



3. When the camera is connected to the router, the LED turns blue. (Connection standby time: 30 seconds maximum)
If the LED does not turn blue, return to Step 2 and confirm that all steps were performed correctly.
4. The status LED will become steady green once the camera is connected to server.



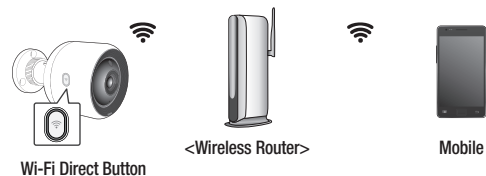
- It is recommended to set the router to DHCP(Dynamic Host Configuration Protocol) server.
If you want to use static IP address, please refer to <Wired Network> on page 22.
- If the router's UPnP is not set, then you might be connected in relay mode.
The settings may differ depending on the connected Broadband Router model.
For more information, refer to the user manual of the applicable router.

Connection using the Wi-Fi Direct function

What is Wi-Fi Direct?

Using Wi-Fi Direct, you can easily connect your camera to a router without a cable.

1. When the power is connected, the power status LED lights up in red and starts blinking when boot-up is complete.
2. Press and hold the Wi-Fi Direct button on the camera for 5 seconds, and the color of the LED will change to yellow/orange.



3. Register and select a camera, referring to the instructions in the mobile guide.
4. When the camera connects the server, the LED turns green.
5. Set up the wireless network environment in accordance with the <Wireless Network> guidance on page. 23.



- The camera can only be registered via mobile.
- You can connect in relay mode if the router doesn't have UPnP.
Configuration may differ depending on the router model. Please refer to the router manual.
- Please contact the service provider if you have difficulty connecting to the Internet.

MONITORING

03

Registration	13	Event Alarm	28
PC OS requirement	13		
Starting SmartCam	13		
Live Video	18	Playback	28
Monitoring options	19		
Setup	21	Information	30
Basic Info	21	My Account	30
Network	22	Support	30
Time	24		
Alarm & Notification	25		
Schedule	26		
SD card	27		

Registration

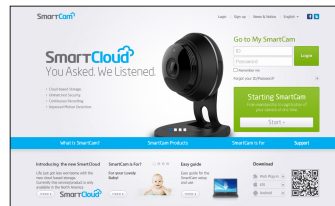
For the SNH-V6430BNH model, camera registration can be performed not only from a smartphone through wired/wireless connection, but also through a PC or laptop computer.

PC OS requirement

Windows	Mac
Windows 7/8 or higher is supported	Mac OSX or higher is supported

Starting SmartCam

1. From your PC, launch your web browser.
2. Go to <http://www.samsungsmartcam.com>.
3. Select preferred language.
4. Click <Sign up> or <Starting SmartCam>.



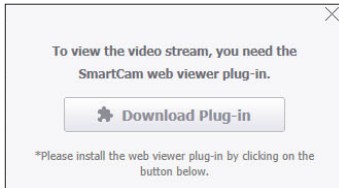
❖ Plug in installation

You can only see the camera image after installing a plug-in.



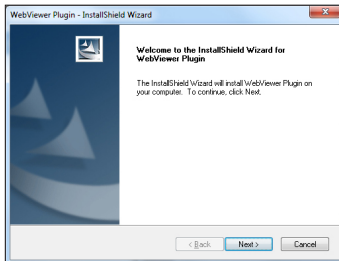
- If you login or click <Starting SmartCam> in a PC where the plug in is not installed, the installation message window will pop up.
- When you install the plug in, the web browser will be terminated and you need to launch it again.

- 1) Click <Download Plug-in>, run the setup file.

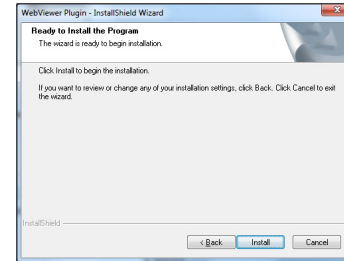


For Windows

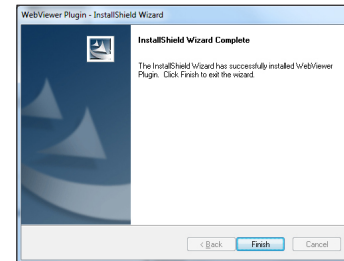
- 2) Click <Next>.



- 3) Click <Install> to begin the installation.

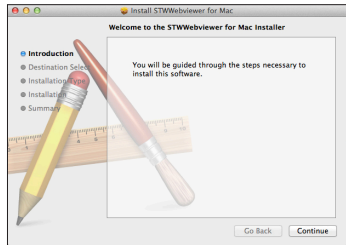


- 4) Installation has completed.

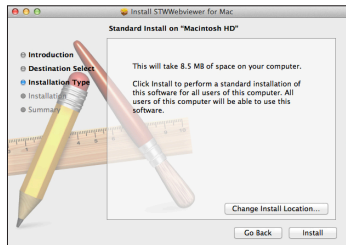


For Mac

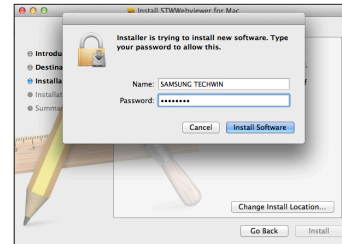
- 2) Click <Continue>.



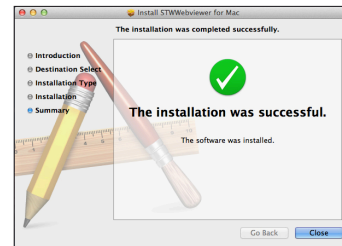
- 3) Click <Install>.



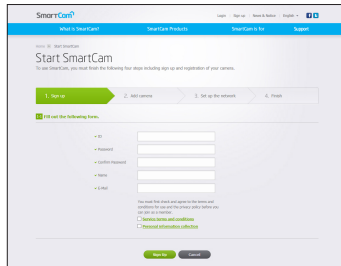
- 4) Enter MAC PC password and click <Install Software>.



- 5) Installation has completed.



- Enter the requested information, and click <Sign Up>.



- ID : Using alphabetical characters and numbers, make a combination using 8 to 14 letters.
- Password : To strengthen security, create a password with a combination of special characters, numerals and English letters.

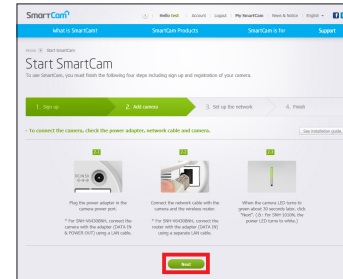


- Length and other restrictions of password.

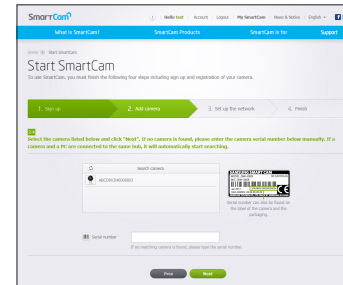
- A combination of English letters/numerals: 10 digits or more
- The password must not be identical to your ID.
- No simple repetitive pattern must be used.
e.g., 1212abab, azxsazxs
- You cannot use 4 or more consecutive letters.
e.g., 1234, abcd
- You cannot use 4 or more consecutive qwerty keyboard letters.
e.g., asdf, 7890
- You cannot use any letter 4 consecutive times.
e.g., !!!!, 1111, aaaa

- Confirm Password : Please enter the password again for confirmation.
- Name : Enter the user name.
- E-mail : Please make sure you enter correct email address as you will have to use the email address to receive temporary ID/password when you lost your user ID or password.

- According to the network connection and setting, click <Next> when the camera LED turns into green.



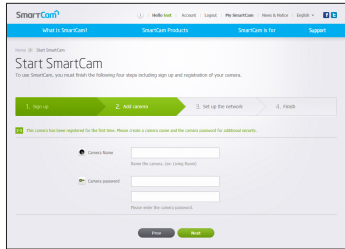
- Select the serial number of the camera to be added from the camera search list. If the camera is not found, enter the serial number manually.
- Click <Next>.



- Serial number can be found the label on the side of the packaging or on the rear of the product.
- The computer and the camera has to be on the same network router to auto detect the cameras.

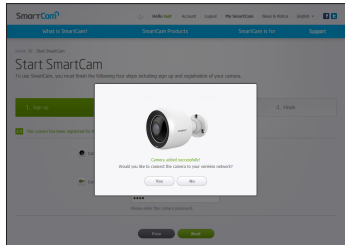
9. Create <Camera Name> and <Camera password>.

10. Click <Next>.



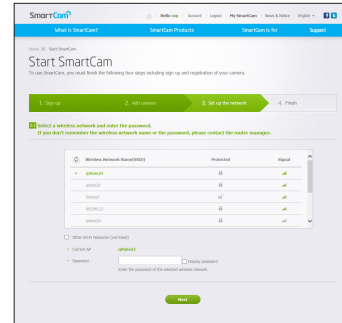
- The camera password is used to block the unauthorized access to your camera.
- Create camera password using alphanumeric characters between 1 to 8 without any space.

11. After adding the camera, click <Yes> in the wireless network setup pop-up window.



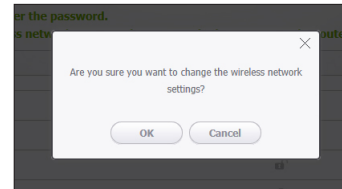
12. Select your Wireless Network from the list.

13. Enter the password of your Wireless Network and click <Next>.

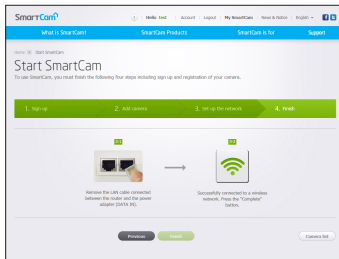


- If your Wireless Network is hidden, select <Other Wi-Fi Networks (not listed)>.
- Select <Display password> to display the password.

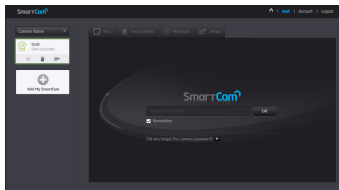
14. Click <OK>.



15. Unplug the network cable from the camera and the router.
16. Click <Finish> if the <Finish> button is activated.

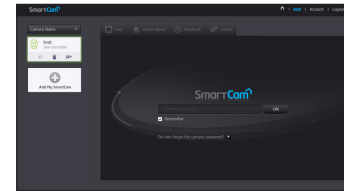


17. Once the camera is successfully registered, you can check the camera in the camera list.

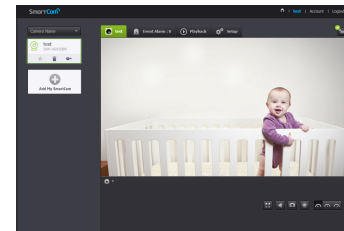


Live Video

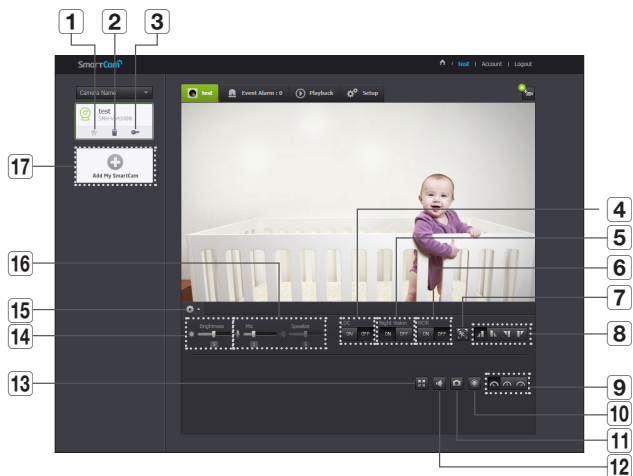
1. Select a camera from the camera list at the upper left hand of the screen.



- The gray icon indicates the camera is inactive so you cannot monitor it right now.
2. Enter the camera password and click <OK>.
- Check on <Remember> to access your camera without entering the password next time.
 - If you want to change the Camera password, please refer to <Basic Info> on page 21.
3. Live video will be displayed on the screen.





Monitoring options



Item	Description
1 Default Camera	Set the default camera to monitor in the camera list.
2 Delete Camera	Delete the registered camera.
3 Cancel remembering camera password	Cancel remembering the camera password.
4 LDC	To determine whether or not to use the image distortion correction.

Item	Description
5 Night Vision	If Night Vision is set <ON>, it will automatically switch to black and white mode in the dark condition and then the IR lamp will automatically operate. If Night Vision is set <OFF>, it does not switch to night vision mode and it will operate in color mode.
6 WDR	Compensate the backlight by brightening any dark areas and darkening any bright areas.
7 Motion zone setting	It detects motion within the range set by a user.
8 Flip/Mirror	You can flip/mirror the video image.
9 Network Speed	Set the network speed (low/mid/high). <ul style="list-style-type: none"> If the bandwidth provided by your internet service provider is smaller than the recommended value, then the video might get fuzzy or temporary disconnections or delays in the live video may be caused.
10 Manual recording	A user can directly save videos in their SD card. <ul style="list-style-type: none"> If there is an ongoing event now or overwrite to SD card is not checked, and there is storage space of 10% remaining, you cannot perform manual recording. If you move the page or turn off the browser without turning off the manual recording button, it will be saved for a max of 30 seconds and manual recording will be finished.
11 Capture Image	Live video is saved as one image.
12 Sound	When enabled, you can hear what's happening around the camera. <ul style="list-style-type: none"> Some internet service providers do not support audio outputs in relay mode.

Item	Description
13 Full screen	Converts the current image to full screen size. <ul style="list-style-type: none"> The system supports Internet Explorer only. If you double-click the screen, the full screen mode is terminated.
14 Brightness	You can adjust the brightness of the screen image.
15 Hide/unhide detailed menu	Click on the [] icon to unhide or hide detailed setting menu.
16 Audio	Adjust the volume of the internal microphone in the camera. If the volume of the microphone is set to '0', the live video will be inaudible. Also, since the audio event does not occur, it will not be recorded on the SD card.
17 Add a camera	Click the [] icon to register an additional camera.

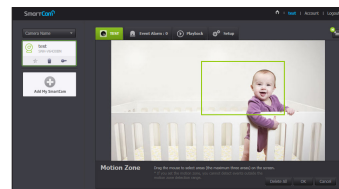
❖ Wireless Network Speed


Profile Name	Resolution	Frame rate	Recommended bandwidth
Low Speed Network	VGA	10 fps	0.7Mbps
Mid Speed Network	HD(720P)	15 fps	1.5Mbps
High Speed Network	Full HD(1080P)	30 fps	3.5Mbps



- What is relay mode?
If the network condition is unstable, the camera cannot make a normal connection (P2P), so it will set up a connection in relay mode. In this case, you will see the video for the first seven minutes only.
- Relay mode is added feature where the video from the camera is transmitted to Samsung server then retransmitted to the user's computer.
- If you have trouble connection to the camera, visit "http://www.samsungsmartcam.com", go to support page, and refer to "Troubleshooting" on it.
- It is recommended to use one browser at one time.
- The Night Vision video produces a different visibility according to the distance between camera and subject.
- The number of available concurrent users for a single camera may vary depending on the speed of your Wi-Fi router.

❖ Motion Zone Setting



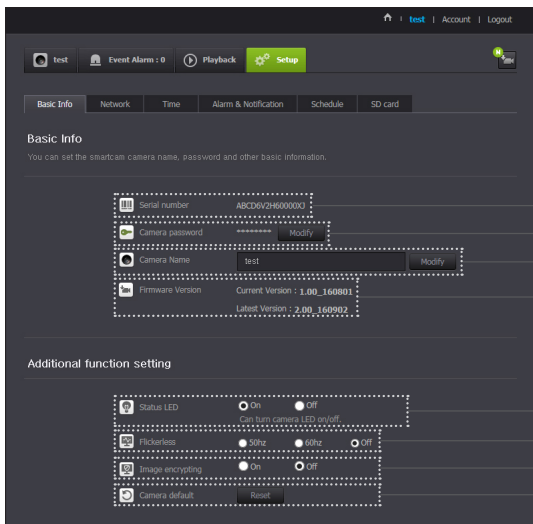
- Click the <  > icon.
- Drag it to the screen to set the detection area.
- Click on <OK>.
If you want to delete the set area, click on <Delete All>.



- The <Motion Detection> function needs to be activated in order to use the motion zone function.
- You can set up to 3 motion zones.

Setup

Basic Info



Item	Description
1 Serial number	You can confirm the serial number.
2 Camera password	Click the <Modify>, you can change the Camera password. Enter the current camera password, and type a new Camera password.
3 Camera Name	Click the <Modify>, you can change the camera name.
4 Firmware Version	You can check the current version and the latest version of your camera S/W.
5 Status LED	You can turn on/off the LED in your camera. <ul style="list-style-type: none">The LED will illuminate when the power supply is reconnected.
6 Flickerless	You can reduce the occurrence of screen shaking due to the frequency mismatches with the neighboring lighting. <ul style="list-style-type: none">If you use the flickerless function outdoors (in a bright environment), image saturation may occur.
7 Image encrypting	Encrypts the transmitted image. <ul style="list-style-type: none">If Encrypt Image is activated, the image transmission performance may be affected.
8 Camera default	Press the <Reset> button to initialize all camera settings other than the network settings. <ul style="list-style-type: none">To reset the camera to its factory default settings, press the [RESET] button on the camera.

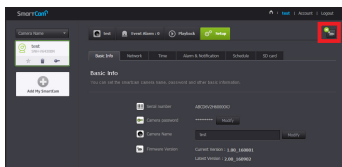


- If you change the camera password, you will be logged out and return to the camera password input page.
- Keep the camera password in a safe place as it is used for viewing the live screen of the camera or for changing the display settings.

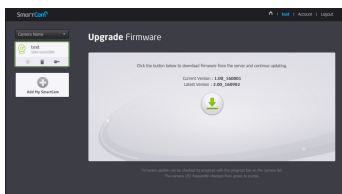
❖ Firmware update

If the currently used S/W is not of the latest version, update it.
If you are using the latest version, then the firmware will not be activated.

- 1) Click <Firmware>.



- 2) Click the < > icon to update the firmware.



- 3) When the firmware update is finished, the camera will reboot.



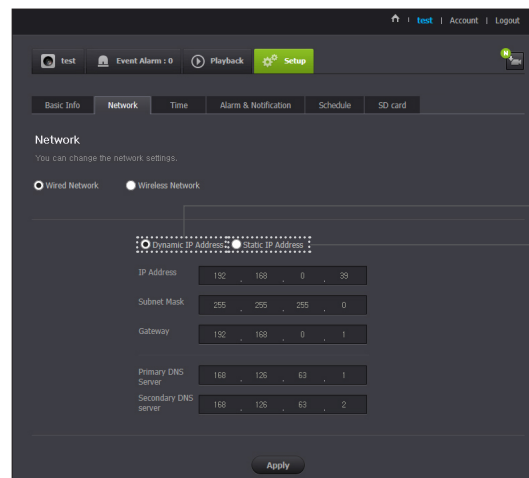
- The duration of the firmware update depends on the size of the firmware file and the network connection speed.
- When executing the firmware update, the camera LED turns purple.



- Please do not cut off the camera power or Internet connection during a firmware update. The system may be damaged.

Network

<Wired Network>



Item	Description
1 Dynamic IP Address	If you select <Dynamic IP Address>, the IP address will be obtained automatically.
2 Static IP Address	You must manually provide the information of: IP address, subnet mask, gateway, DNS server address. <ul style="list-style-type: none"> ■ Check the information of the router to connect.



- If any of the manual settings is wrong, the network settings will not be applied.
- If you have both cable and wireless network connections simultaneously, the cable network connection is prioritized.
- If you switch from the current wireless connection to the cable connection, the network will switch to cable connection accordingly.
- For more information about the router or the wireless connection, refer to the documentation of the router or contact the router manufacturer.

<Wireless Network>

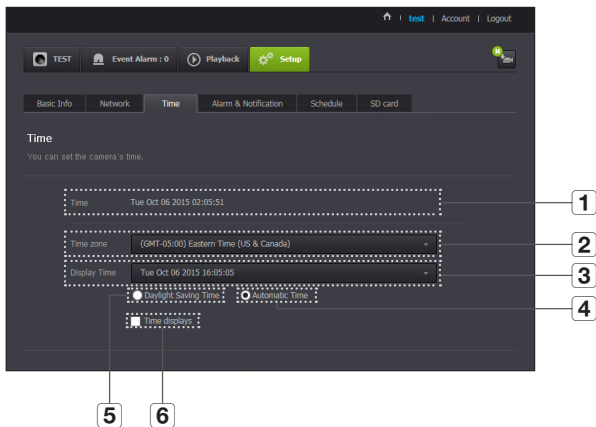


Item	Description
1 Wireless On/ Wireless Off	You can select to activate or deactivate the wireless network connection.
2 AP (Access Point) list	You will see a list of APs (Access Point) available. Select a desired one from the list of APs (Access Point).
3 AP (Access Point) password	You can access the network by entering the password set for the wireless router. For the password, contact your network administrator.
4 Hidden SSID	Select a different WiFi network, entering its SSID, the type of security that it uses, and the wireless password configured in the router's settings.



- If you select a non-secured AP (Access Point), you just can access the network without providing a specific password.
- If you cannot connect to the wireless network, check that you entered the wireless router password correctly.
- When the wireless network settings are completed, remove the LAN cable. If you do not remove the LAN cable, the wireless network will not be available.

Time

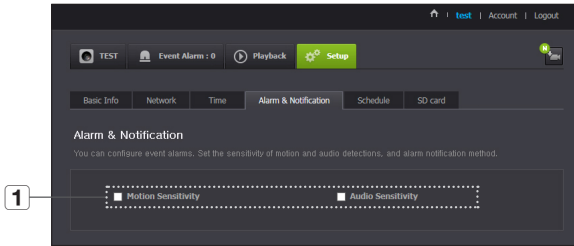


- The time will synchronize with the NTP(Network Time Protocol) server automatically. For this, Internet connection is required.
- You need to set the timezone correctly to obtain the exact time setting.
- The time displayed without Internet connection may not be accurate.

Item	Description
1 Time	Confirm the camera's time.
2 Time Zone	Select your region.
3 Display Time	Select the time format displayed in time setting.
4 Automatic Time	It sets camera's time automatically.
5 Daylight Saving Time	Check this option if you live in a country or region where DST(Daylight Saving Time) is applied.
6 Time to show	Live screen displays the time.

Alarm & Notification

Camera has ability to send event notifications when motion or audio is detected.



Item	Description
1 Alarm notification	<p>You can set motion or audio alerts. Sensitivity level can also be set. The higher the sensitivity, the more accurate motion and audio events can be detected.</p> <ul style="list-style-type: none"> When an event occurs, if you want to send alerts to Gmail, first log into your google account.

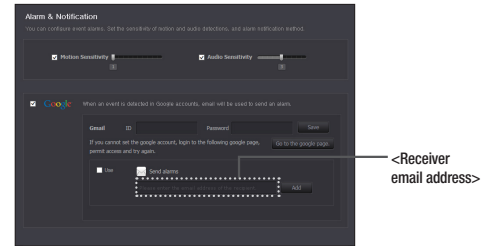


- In the following case, it may fail to derive the proper results for basic events and motion detection.
 - The object color or brightness is similar to the background.
 - Multiple movements continue occurring at random due to a scene change or other reasons.
 - A fixed object continues moving in the same position.
 - An object hides other objects behind.
 - Two or more objects overlap or one object divides in multiple portions.
 - A moving object comes close to the camera.

<Gmail> Notification

The event alarm is sent through Gmail.

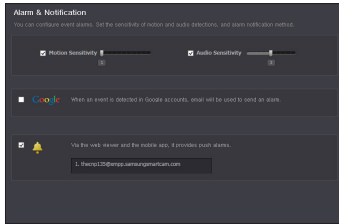
- Select the Google.
- Enter your Gmail address and password.
- Select <Use> of "Send alarms".
- Enter your email address to receive the notification e-mail and click <Add>. Now, the receiver full email address will be shown in the List Box. If you want to register more than one email address, you can just repeat the same procedure.
- Click <Save>.



- If your Google email ID/password are saved, only check "Send alarms".
- If the email address for the recipient entered is incorrect, event alerts will not be sent.
- Even if you entered a correct google account ID, if the ID/password confirmation pop up window appears, click on <Go to the google page.> and check the google account.

Push alarm Notification

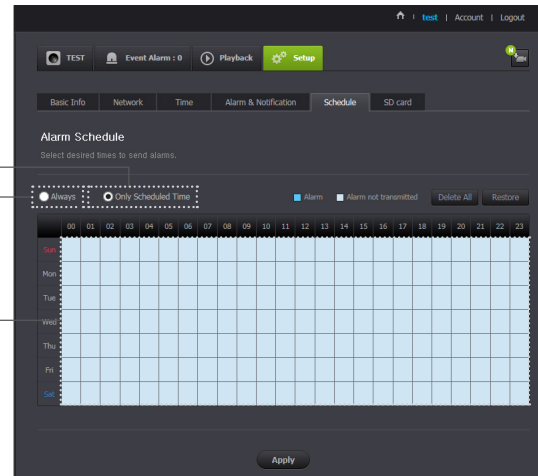
For users whose cameras are registered, a push alarm is provided via the Web app and the mobile app.



- Push alert list shows the list of IDs of users who registered cameras. When an alarm occurs, the web site will send push alerts to each smart phone.

Schedule

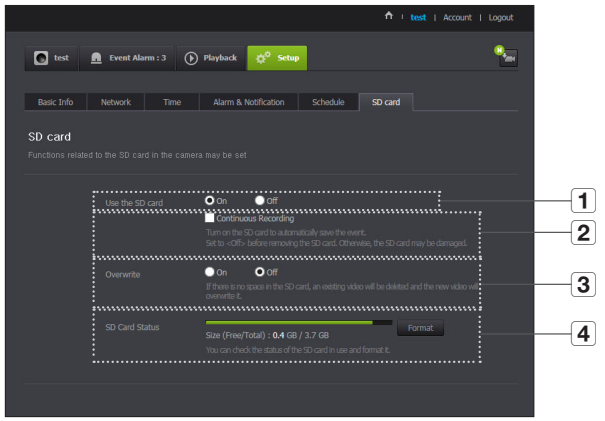
When the user designates a desired day and time, the alarm works only at the designated time.



Item	Description
1 Only Scheduled Time	Alarm function will only operate for the time/day designated by the user.
2 Always	Alarm function always operates.
3 Motion time settings	You can click and drag to set the motion time in hours. Example) When you select 00, an event will occur and remain from 00 to 00:59

SD card

When an event occurs, it is saved in an SD card.

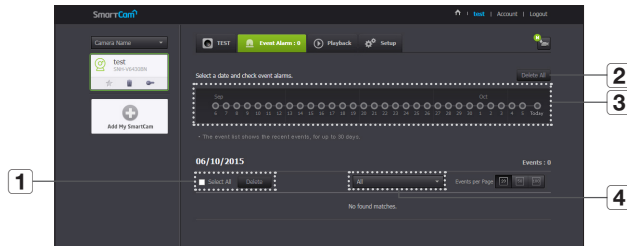


- Turn off the camera power or set it to <Off> before removing the micro SD card. If you fail to do this, the data in the micro SD camera may be damaged.
- Please note that the content of a micro SD card used for other purposes may be deleted when it is mounted in the camera.
- Be careful, as the Micro SD memory card may pop out when you press it hard and release to remove it from the camera.
- Do not forcibly insert it in the reverse direction. The Micro SD memory card may be damaged.
- It is not recommended to remove the Micro SD card from the camera during rainy or humid weather.
- Complete the disassembly of the product casing. If you do not, internal condensation may result.
- The following micro SD cards are recommended for this camera.
Manufacturer : Sandisk, Transcend
Class 6 or higher, MLC type
- Micro SD card of max 128GB is supported and a FAT32 file system is supported.
- It is recommended to use the micro SD card after formatting it. Regularly formatting the memory card will help extend its life.
- Video is recorded at at 1280X720 resolution.

Item	Description
1 Use the SD card	If you set motion/audio, video will be automatically saved in your SD card.
2 Continuous Recording	Saves the video without being interrupted by events that may occur.
3 Overwrite	If the SD card capacity is insufficient, it will start overwriting the oldest data. <ul style="list-style-type: none"> ■ When there is storage capacity of 10% remaining, the top notification window will show an alarm.
4 SD Card Status	Check the remaining capacity of your SD card and delete all the data.

Event Alarm

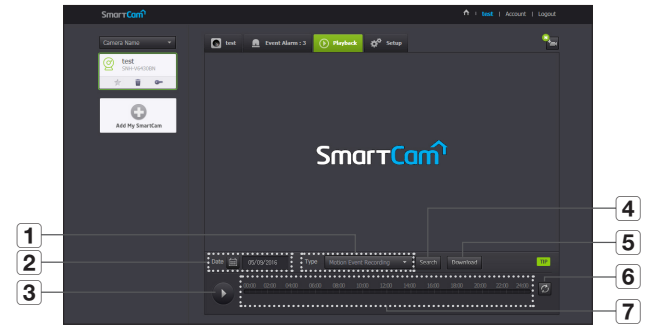
You can check the event alarm that occurred.



Item	Description
1 Delete by dates	Delete all the event alarms on the date.
2 Delete All	Delete all the event alarms for thirty days.
3 Display Events	Displays the number of events occurred in the 30 day list.
4 Arrange by types	Arrange the event list by event types.

Playback

You can play a video saved on the SD card and download it to the PC.



Item	Description
1 Type	Set the event type to search for during the search period.
2 Date	Set the search date for the data saved in your SD card.
3 Play/pause	Play and pause video.
4 Search	Perform event searches.

Item	Description
5 Downloading a recorded video	<p>Downloads a manually recorded video/motion/audio event saved on the SD card to the PC.</p> <ul style="list-style-type: none"> ■ Downloading is only available when the computer and the camera are connected to the same network router. ■ Downloading may be unavailable if the network is unstable or there is access by multiple users. ■ The function to download a recorded video is supported by the Smart Cam mobile app for Android smartphones (not supported in the iOS app).
6 Refresh	<p>Renew the events displayed in timeline.</p>
7 Timeline	<p>Use the timeline to play the video in the desired time.</p>

Information

My Account

SmartCam®

What is SmartCam? SmartCam Products SmartCam is for Support

Home > Account > Edit Profile

Account

Would you like to modify your information?
Please update the following information to update your profile.

- User ID: thecrip135
- Current Password:
- New Password:
- Confirm Password:
- Name: first
- E-Mail: tesr44@samsung.com
- Delete Account:



- If you want to change the member information, click on **<Account>**. Select the item (password, or email address) and enter your information.

Support

You can download the Smart Cam mobile app and its user manual.

SmartCam®

What is SmartCam? SmartCam Products SmartCam is for Support

Home > Support

Support

VISION CHATBOT VISION

FAQ

Search FAQ

- The video looks dark when it is installed near a window.
- The camera used in the office does not work in my home.
- The screen is frequently interrupted or delayed.
- The video is too dark at night.
- What does the color of the camera LED light indicate?
- The blue LED light of the camera does not change to green (registration failed).
- Can I turn off the camera LED?
- I want to save my camera password.
- I forgot my camera password.
- I'd like to initialize my camera.

Easy guide

Camera Installation & Registration Guide

Mobile App

Samsung SmartCam mobile

Android iOS

User Manual

- User Guide 2018-11-01
- Quick Guide 2018-11-01
- Troubleshooting 2018-11-01
- Helps Guide(MP3) 2018-11-01
- Mobile Guide(Android) 2018-11-01

Specifications

Specifications
Product Appearance

Troubleshooting

Specifications

Specifications

Item	Description
Video	
Imaging Device	1/3" CMOS
Effective Pixels	1944(H) x 1092(V)
Low Light Performance	Color : 0.3 Lux, B/W : 0 Lux with IR
Lens	
Angular Field of View(D / V / H)	130° / 63° / 113°
Focus Control	Fixed Focus
Lens Distortion Correction	supported (camera level)
Operational	
IR LED	850mm
Viewable Length	15m
Wide Dynamic Range	HDR
Gain Control	Auto
White Balance	Auto
Digital Zoom	4x(mobile), 10x(Web)
Flip / Mirror	Off / On

31

31

33

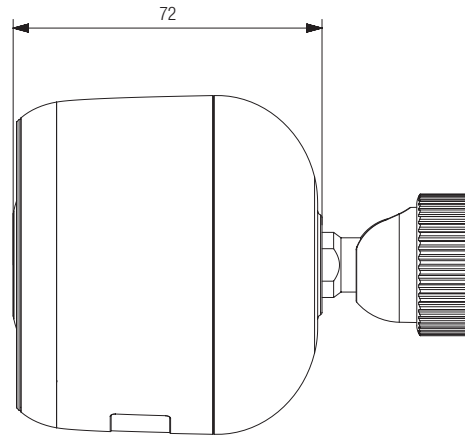
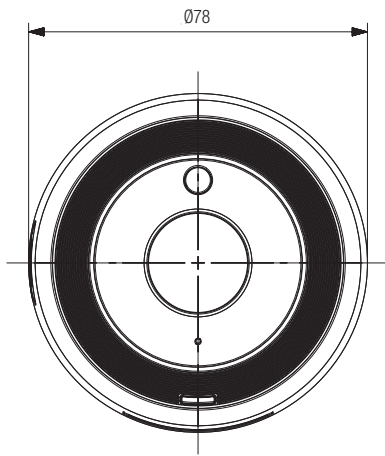
34

Item	Description
Motion detection	Supported
Audio detection	Supported
Alarm trigger	Motion Detection, Audio Detection, Motion Zone Selection
Event responsive motion	Push alarm (PC and mobile terminal) Notification via email
Memory slot	SDXC memory slot (up to 128GB)
Network	
Ethernet	RJ-45
Wireless	WiFi 802.11 a/b/g/n/ac, 2.4G/5G Dual-band
Video Compression Format	H.264
Live resolution	1920x1080 / 1280x720 / 640x360
Recording resolution	1280x720
Streaming Capability	Multiple Streaming (Up to 4 Profiles)
Audio I/O	Built-in microphone
Audio Compression Format	G.711 u-law
Audio Communication	1-Way Audio (Built-in Mic)
IP	IPv4
Protocol	TCP/IP, UDP/IP, RTP(UDP), RTP(TCP), RTSP, NTP, HTTP, HTTPS, SSL, DHCP, SMTP, ICMP, ARP, DNS, UPnP
Security	HTTPS(SSL) authentication method Digest authentication method
Streaming Method	Unicast

Item	Description
Webviewer/App viewer	Supported OS - PC : Windows 7, 8 or higher, MAC OS X or higher - Mobile : iOS 7 or higher, Android Jelly Bean or higher (Not all Android phones are compatible).
Environmental	
Operating Temperature / Humidity	-30°C ~ +40°C (-22°F ~ +104°F) / 90% RH or below
Storage Temperature / Humidity	-30°C ~ +60°C (-22°F ~ +140°F) / 90% RH or below
Ingress Protection	Weather Resistant
Electrical	
Input Voltage / Current	PoE(802.3af, Class3)
Power Consumption	Max 6.7W
Power Connector	RJ45(PoE)
Mechanical	
Color / Material	White / Plastic
Dimension (ØxH)	Ø78mm x H72mm (Ø78mm × 118.5mm with bracket)
Weight	271g
Adaptor	
Operating temperature	0°C ~ +40°C (+32°F ~ +104°F)
Color / Material	White / Plastic
Dimensions	60mm x 96.6mm x 36mm
Cable Length	Distance between the router and the camera: 70m max. (based on CAT5e, at a room temperature of 25°C)
Plug Type	RJ45

Product Appearance

unit: mm (inch)



Troubleshooting

If you encounter a problem with your system, see the table below to solve the problem as quickly and easily as possible. Please follow the instruction below:

Problem	Action
I forgot my user ID/ password.	<ul style="list-style-type: none"> - Move to "Log-in page → Forgot your ID/Password?", and enter the registered e-mail address to which we will send you the user ID and/or a new password. It can be spammed out depending on the policy of the email server. After logged in, it is advisable to change the temporary password provided.
Camera is not connected to the wireless hub.	<ul style="list-style-type: none"> - The cable connecting the router to the camera should have a length of 70m or less (based on CAT5e LAN cable) - If the green light on the camera state LED turns off frequently, it may be because the camera is installed in an environment with a poor wireless Internet connection. - Check the password for the wireless hub and try again.
After logged in, I failed to register the camera.	<ul style="list-style-type: none"> - Check whether the serial number entered matches the label on the camera. - Enter the correct password for the camera registered again and try to register the camera again. - Check whether the LED light of the camera is yellow or orange. - If this fails to resolve the problem, factory reset the camera and repeat the procedure from the beginning. (To factory reset the camera, press and hold the RESET button on the camera for 10 seconds. The camera will be restarted when the camera is factory reset.)

Problem	Action
The video from the camera is temporarily lost.	<ul style="list-style-type: none"> - The video from the camera can be delayed according to a network delay. Please check if the camera is installed in a place of proper wireless Internet communications.
No sound is output from the video.	<ul style="list-style-type: none"> - Click the Voice icon in the video playback page, or check if the voice is turned On in your smart phone app. - Some internet service providers do not support audio outputs in relay mode.
I forgot my Camera password.	<ul style="list-style-type: none"> - You must create a new camera password. - Press and hold the camera reset button for 10 seconds to factory reset the camera, and then register the camera again.
I want to change my password and/or email address.	<ul style="list-style-type: none"> - After logging in, click on the <Account>. Select the item (password, or email address) and enter your information.
Camera will be connected in a relay mode.	<ul style="list-style-type: none"> - Check the UPnP setting of the router. - A network upload speed of at least 3.5Mbps (1080p) is recommended. - Depending on the policy of your service provider, you can access in relay mode.



Hanwha Techwin cares for the environment at all product manufacturing stages, and is taking measures to provide customers with more environmentally friendly products. The Eco mark represents Hanwha Techwin's devotion to creating environmentally friendly products, and indicates that the product satisfies the EU RoHS Directive.



Correct Disposal of This Product

(Waste Electrical & Electronic Equipment)

(Applicable in the European Union and other European countries with separate collection systems)

This marking on the product, accessories or literature indicates that the product and its electronic accessories (e.g. charger, headset, USB cable) should not be disposed of with other household waste at the end of their working life. To prevent possible harm to the environment or human health from uncontrolled waste disposal, please separate these items from other types of waste and recycle them responsibly to promote the sustainable reuse of material resources.

Household users should contact either the retailer where they purchased this product, or their local government office, for details of where and how they can take these items for environmentally safe recycling.

Business users should contact their supplier and check the terms and conditions of the purchase contract. This product and its electronic accessories should not be mixed with other commercial wastes for disposal.

Head Office

86 Cheonggyecheon-ro Jung-gu Seoul 04541 Korea

Tel +82.2.729.5277, 5254 Fax +82.2.729.5489

www.hanwha-security.com

Hanwha Techwin America

500 Frank W. Burr Blvd. Suite 43 Teaneck, NJ 07666

Tel +1.877.349.3149

Hanwha Techwin Europe

Heriot House, Heriot Road, Chertsey, Surrey, KT16 9DT, United Kingdom

Tel#1 00800.8010.8022

Tel#2 +31.77.326.1580
