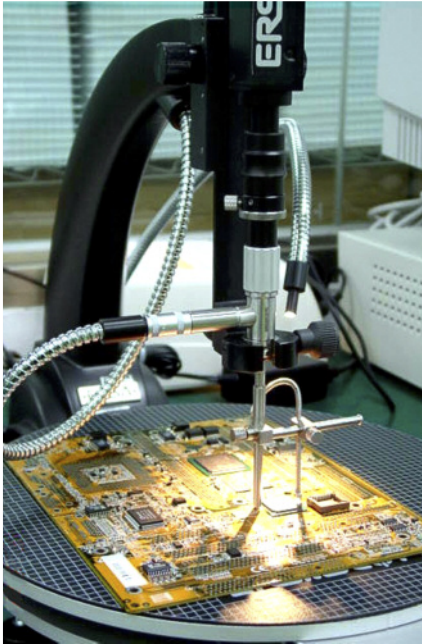


Shuttle



XPC nano · XPC slim · XPC cube · XPC all-in-one



More than 30 years of experience in the development and production of PC components

WELCOME TO THE WORLD OF SPACE-SAVING MINI PCs

It all began in 1983. We started early and have been a genuinely pioneering force in the industry since 2001. Over the past 15 years, We have launched an array of space-saving and energy-efficient PCs for every area of application. The unique feature of our machines is the use of sophisticated cooling concepts for minimum operating noise. We manufacture reliable Slim PCs, Mini PCs, and All-in-One PCs for the office – and for extremely demanding professional applications.



COMPANY PROFILE

Established in 1983 in Taiwan, we specialise in the development and production of space-saving Mini PCs. The stock market listed company is represented globally through subsidiaries in Germany, the USA, China and Japan. Since 2001 attractive PC solutions in an array of formats designed for virtually every area of application have been the main business focus of Shuttle. We aim to develop individual solutions for the demanding requirements of customers. Technical innovations such as new chipsets, processors and connections are regularly integrated in new models within a short time of product launch. The range of products has recently been expanded to include fanless Slim PCs.

MILESTONES

2015 ▶ Shuttle launches its first model with IP54 certification
 2013 ▶ Shuttle celebrates its 30th anniversary since its establishment
 2012 ▶ Launch of particularly robust and fanless industrial PCs
 2012 ▶ Introduction of OMNINAS (NAS solutions)
 2012 ▶ Shuttle adds 18.5" model to its All-in-One PC product range
 2011 ▶ Shuttle launches the world's fastest Mini PC
 2010 ▶ Shuttle launches its first 1-litre PC (fanless)
 2009 ▶ Shuttle starts to use new production facilities in China
 2009 ▶ Shuttle starts development and production of OEM notebooks
 2009 ▶ Shuttle launches its first All-in-One PC (fanless)
 2008 ▶ Shuttle launches Mini PC with integrated touchscreen
 2006 ▶ Shuttle launches its first 3-litre PC
 2005 ▶ Shuttle opens branch office in China
 2005 ▶ Shuttle launches its first Media-Center XPC
 2005 ▶ First Mini PC in the world with two graphics cards in SLI mode
 2005 ▶ Tom's Hardware awards Shuttle „Best SFF PC Maker“
 2004 ▶ Shuttle introduces XPC complete system solutions
 2004 ▶ Shuttle establishes Japan branch office

2004 ▶ Over one million XPCs shipped
 2002 ▶ Shuttle introduces the patented "I.C.E." heatpipe cooling system
 2001 ▶ Shuttle launches first Shuttle XPC Mini PC
 2000 ▶ ISO-14001 certification
 2000 ▶ Shuttle Inc. becomes a publicly listed company (TAIEX: 2405)
 1999 ▶ ISO-9001 certification
 1998 ▶ Shuttle develops the world's first 17x17cm motherboard for OEM market
 1997 ▶ Shuttle establishes 3500 m² production facilities in Taoyuan, Taiwan
 1995 ▶ Shuttle recognised as the world's 5th largest mainboard maker
 1995 ▶ ISO 9002 and TÜV certification
 1990 ▶ Shuttle Computer Handels GmbH established in Germany
 1988 ▶ Shuttle Computer Group USA established
 1984 ▶ Shuttle begins manufacturing motherboards in Taoyuan, Taiwan
 1983 ▶ Shuttle Inc., Taiwan established (formerly Holco)



The Shuttle® XPC cube is a fully-fledged Desktop PC in a Mini PC format

COMPACT AND STYLISH

- ▶ Only about 13 litres in volume
- ▶ Three times smaller than conventional Desktop PCs
- ▶ Stylish design, top-quality workmanship, aluminium cases

SUPPORTS POWERFUL DESKTOP PROCESSORS

- ▶ Supports high-end processors
- ▶ Varied choice of processors and chipsets

SIMPLE INSTALLATION

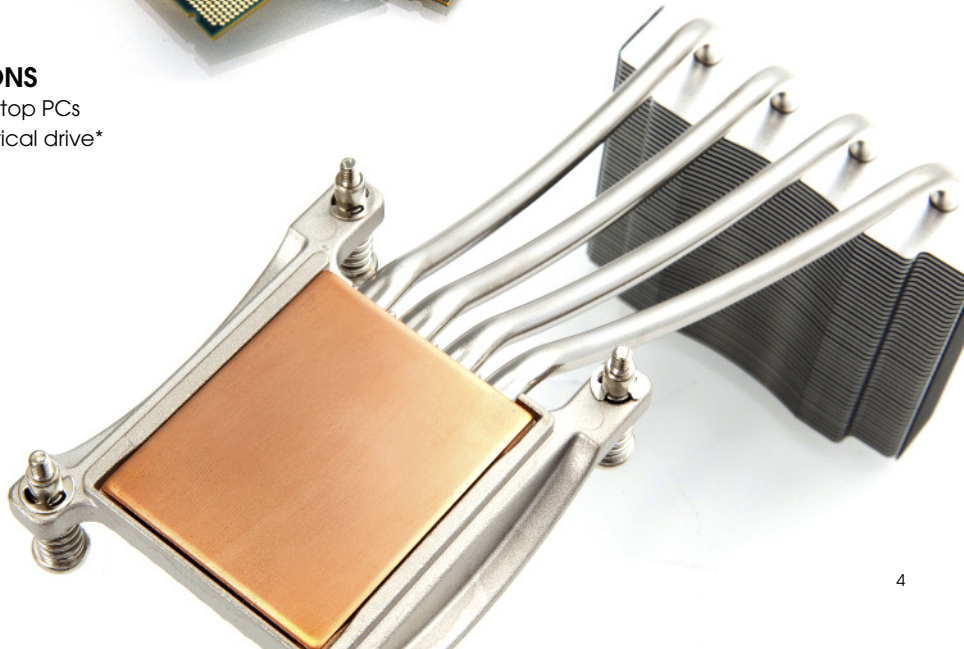
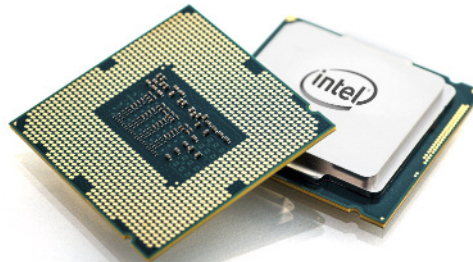
- ▶ Many cables already pre-routed
- ▶ Clear installation instructions

HEATPIPE COOLING SYSTEM

- ▶ Efficient heatpipe cooling system
- ▶ Regulated fan speed
- ▶ Intelligent airflow control

WIDE RANGE OF CONNECTION OPTIONS

- ▶ High connectivity comparable to large Desktop PCs
- ▶ Supports at least two hard disks and one optical drive* (standard components)



Barebone – or complete system? The choice is yours!

WHAT IS A BAREBONE?

All Shuttle PC products are available as barebone or complete systems. Barebones look like full PCs, but still must be fitted with various components (e.g. memory, drives, processor and software) before initial use as shown in the illustration:

► Processor



Cooling system

+

► Memory



Power supply unit

+

► Hard disk / SSD



Cables

+

► Graphics card*



Mainboard

+

► Optical drive



Case

=

► Operating system



Complete System



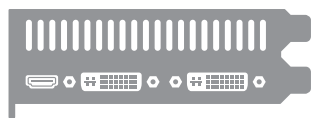
Mini PCs are frequently underestimated ...

HOW DO I KNOW IF MY GRAPHICS CARD FITS?

Shuttle XPCs use the same chipsets and desktop components as standard large-format PCs. Despite the small case dimensions, the listed XPC cube models support large-format dual-slot graphics cards with lengths of up to 27.3 cm.



Single-slot graphics card



Dual-slot graphics card

EXAMPLE CONFIGURATION WITH THE LATEST HIGH-END COMPONENTS

- ▶ Shuttle® XPC cube Barebone SZ170R8
- ▶ Intel® Core™ i7-6700K processor
(4 cores, 8 MB cache, up to 4.20 GHz)
- ▶ NVIDIA® GeForce® GTX 980 graphics card (4 GB)
- ▶ 4x 16 GB DDR4 memory (total = 64 GB)
- ▶ 512 GB M.2 SSD (PCIe)
- ▶ 4x 10 TB hard disk (total = 40 TB) in RAID 0, 1, 5 or 10

DOES THE BUILT-IN PSU SUPPORT MY GRAPHICS CARD?

Shuttle uses efficient power supply units that are specifically tailored to the maximum power requirements of an XPC and provide the precise performance that they effectively need. For instance, a 300 W supply unit has the capacity to power an NVIDIA® GeForce® GTX 950 graphics card. Shuttle XPCs offer reliable and stable operation with all the components shown in the relevant compatibility lists, see:

[HTTP://GLOBAL.SHUTTLE.COM](http://GLOBAL.SHUTTLE.COM)



XPC POWER SUPPLY UNITS AND POWER CONNECTORS FOR GRAPHICS CARDS

If the power consumption of a graphics card exceeds 75 W, the energy requirements cannot be met via the PCI-Express slot on its own and the power supply unit needs to provide one or even two additional power connectors coupled to relevant graphics cards. You therefore need to check the power connectors and the compatibility list to find out whether the desired graphics card is compatible.



Graphics card with one 6-pin power connector



Graphics card with two 6-pin power connectors

Energy-saving solutions with Intel® Celeron® processor

SLIM PC OR ALL-IN-ONE PC

- ▶ Nettop format
(only 1.1 to 1.5 litres)
- ▶ All-in-One PC
with 39.6 cm (15.6") touchscreen

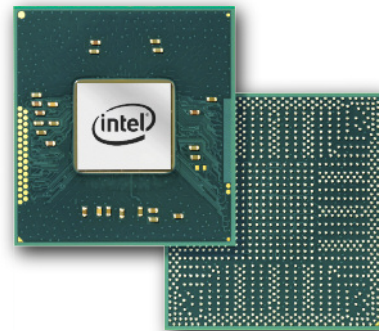
100% FANLESS

- ▶ No fan noise
- ▶ Ideal for noise-sensitive areas
- ▶ Maintenance-free,
passive cooling



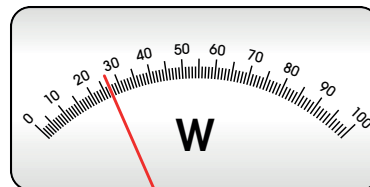
CELERON MULTI-CORE CPU

- ▶ Intel Celeron processor
(J1900, N3050, 2957U or 3205U)
- ▶ Dual/Quad-Core allows for processing parallel threads
- ▶ Maximum TDP ranging from 8 to 15 Watt only



ENERGY-SAVING

- ▶ Consumption only approx. 11 – 30 W
- ▶ Electricity costs only about €10 – 18 per year
based on a normal 8-hour working day



DIGITAL SIGNAGE

Digital advertising areas, information screens and electronic signs are now an integral part of everyday life. Shuttle supplies the right player for every scenario – and for a wide range of operating systems. These compact machines are all characterised by their robust design. They range from ultra-high-performance models and machines with innumerable ports and connections to low-energy, continuously running fanless devices. High-strength steel and a broad temperature spectrum enable installation even in difficult environments.



POS

The purchase of a POS system often represents a considerable capital investment. However, with Shuttle's energy-saving All-in-One PCs in your desired configuration, you save money. Thanks to the tilting pedestal and standard installation mount, these machines can be installed almost anywhere. And our new IP54-compliant models are now even more robust. Maximum flexibility in terms of choice of hardware and software enables the creation of a POS solution that exactly meets your requirements.

OFFICE

It is important to be able to work without disturbances and distracting noises. And a Shuttle slim desktop PC is the ideal companion at work – it stays discreetly in the background, but is also able to spring into action when needed. These tiny PC solutions meet your requirements precisely. You have a wide choice of processors, for example the energy-saving, dual-core Intel Celeron or the extremely powerful Intel Core i7 models. Is just 2 GB plenty for you or do you need 16 GB of memory? And what about the number of drives and network and data connections? Whatever your requirements, we have the right model for you.





Shuttle products have stood tall in a large number of reviews right across Europe and are the proud bearers of numerous awards. Here is a small selection ...

OUR SMALLEST EVER PC SOLUTION

Shuttle's latest development goes by the name NC01U and is a slim 29 mm solution based on the highly-efficient Broadwell generation of Intel processors. In order to cover as many areas of application as possible, they come with a selection of soldered processors ranging from Celeron, Core i3, Core i5 to even Core i7. Each model offers up to 16 GB of DDR3L memory. The NC01U has a Mini DisplayPort, HDMI, Gigabit Ethernet, audio, USB 3.0, USB 2.0, RS-232 and an M.2 slot. A replaceable wireless combo module with WLAN (803.11ac) and Bluetooth connectivity also comes already fitted. The case can accommodate one 2.5" drive (SSD or HDD). With the versatile VESA mount, these PCs can be fixed to any surface and to compatible monitors.



NC01U**Small PC for big tasks and slim budgets**

| | | |
|---------------------------------|---------------|---|
| Colour | | Black |
| Complete system | | NC 1000XA, NC 1000BA, NC 1000B, NC01UXA |
| Processor | Model | Intel Celeron 3205U |
| | Clock speed | 2x 1.5 GHz (Turbo 2.16 GHz), 2 Threads, 2 MB Cache |
| | Cooling | I.C.E. Heatpipe |
| Memory | | 2x 204-Pin SO-DIMM-slots, max. 2x 8 GB DDR3L-1600, Dual-Channel |
| Chipset | Northbridge | (Integrated in processor) |
| | Southbridge | (Integrated in processor) |
| | Audio | Realtek ALC 269Q-VC3 |
| | LAN | Intel i218LM (Gigabit) supports WOL and PXE |
| Wireless network, Wi-Fi | | Realtek RTL8821AE (802.11b/g/n/ac, 150 Mbit) |
| Integrated graphics | | Intel HD Graphics inside processor, UMA, supports two displays |
| Expansion slots | Graphics card | - |
| | PCI/M.2 | 1x M.2 type 2242, key B+M, for SATA SSDs only 2x USB 3.0, card reader, Power-LED, HDD-LED, power button |
| Connectors, LEDs and buttons | Front | HDMI (w/ digital audio), Mini-DisplayPort (w/ digital audio), 2x USB 2.0, audio combo (microphone/headphones), Gigabit Ethernet |
| | Rear | COM port (RS-232), K-Lock |
| | Side | 1x SATA 6 Gbit/s |
| | Onboard | 1x SATA 6 Gbit/s |
| Drive bays and supported drives | | 1x 2.5" supports 1x 2.5" HDD/SSD, card reader: SD, SDHC & SDXC, 1x M.2 SSD |
| Power supply | | External 65 W power supply unit, Output: 19 V DC, Input: 100-240 V AC |
| BIOS | | AMI BIOS supports ACPI 3.0 and UEFI |
| Material | | Plastic |
| Dimensions and weight | | 14.1 x 14.1 x 2.9 cm (LWH) = 0.58 L, 0.36 kg |
| Permitted ambient parameters | | Ambient temp. range: 0–50°C, Air humidity: 10–90 % |
| Optional accessories | | Graphics expansion box, different I/O boxes |

◀ **Product Video****PDF Data Sheet**🔗 [GO.SHUTTLE.EU/ugvom](https://go.shuttle.eu/ugvom)

The NC01U has a quiet heatpipe cooling system. Thanks to the supplied VESA mount, it can be fitted to any surface and to compatible monitors.

NC01U3**Energy-saving solution with Intel Core i3 processor***Same features as NC01U, but with:*

- ▶ Intel Core i3-5005U (2 GHz)
- ▶ Intel HD Graphics 5500

PDF Data Sheet 🔗 [GO.SHUTTLE.EU/xjjyn](https://go.shuttle.eu/xjjyn)**NC01U5****Energy-saving solution with Intel Core i5 processor***Same features as NC01U, but with:*

- ▶ Intel Core i5-5200U (2.2 GHz)
- ▶ Intel HD Graphics 5500

PDF Data Sheet 🔗 [GO.SHUTTLE.EU/vfu6w](https://go.shuttle.eu/vfu6w)**NC01U7****Energy-saving solution with Intel Core i7 processor***Same features as NC01U, but with:*

- ▶ Intel Core i7-5500U (2.4 GHz)
- ▶ Intel HD Graphics 5500

PDF Data Sheet 🔗 [GO.SHUTTLE.EU/xg9y](https://go.shuttle.eu/xg9y)



CLEVERLY DESIGNED, UNSHAKABLE, INAUDIBLE

Making good things yet a tad better, this is just what was achieved here. The sleek DS67U is based on the latest Intel processor generation, packs the WLAN ac standard, supports M.2 expansion cards and for the first time accommodates up to 32 GB of memory. Other proven specs remain untouched. Our DS67U still is 100 per cent fanless not only making it nearly inaudible, but also helps keep noise level to a minimum. Being fanless also means less dust is sucked in and whirled up that again reduces maintenance required. This model is even approved for 24/7 permanent operation. Room inside the robust steel case is plenty enough for one 2.5 inch drive and one M.2 SSD. The DS67U further includes a pedestal as well as a Vesa mount. Clever idea.



DS67U**Ideal for vertical market applications**

| | | |
|---------------------------------|---------------|---|
| Colour | | Black |
| Complete system | | DS 6700B, DS67UXA |
| Processor | Model | Intel Celeron 3855U |
| | Clock speed | 2x 1.6 GHz, 2 Threads, 2 MB Cache |
| | Cooling | Passive, fanless |
| Memory | | 2x 204-Pin SO-DIMM-slots, max. 2x 16 GB DDR3L-1600, Dual-Channel |
| Chipset | Northbridge | (Integrated in processor) |
| | Southbridge | (Integrated in processor) |
| | Audio | Realtek ALC662 |
| | LAN | 1x Intel i211 (Gigabit) supports WOL and PXE 1x Intel i218LM (Gigabit) supports WOL and PXE |
| Wireless network, Wi-Fi | | Realtek RTL8821AE (802.11ac) |
| Integrated graphics | | Intel HD Graphics 510 inside processor, UMA, supports two displays |
| Expansion slots | Graphics card | - |
| | PCI/M.2 | 1x M.2 type 2242, key B+M |
| Connectors, LEDs and buttons | Front | 2x USB 3.0, 2x USB 2.0, 2x COM port (RS-232 and RS-232/422/485), card reader, Power-LED, HDD-LED, power button |
| | Rear | HDMI (w/ digital audio), DisplayPort (w/ digital audio), 2x USB 2.0, microphone, headphones, 2x Gigabit Ethernet, remote Power-On, K-Lock |
| | Onboard | 1x SATA 6 Gbit/s, Power-on-after-power-fail jumper |
| Drive bays and supported drives | | 1x 2.5" supports 1x 2.5" HDD/SSD, 1x mSATA SSD, card reader: SD, SDHC & SDXC, 1x M.2 SSD |
| Power supply | | External 65 W power supply unit, Output: 19 V DC, Input: 100-240 V AC |
| BIOS | | AMI BIOS supports ACPI 3.0 and UEFI |
| Material | | Steel |
| Dimensions and weight | | 20 x 3.95 x 16.5 cm (LWH) = 1.3 L, 1.43 kg |
| Permitted ambient parameters | | Ambient temp. range: 0-40°C, Air humidity: 10-90 % |
| Optional accessories | | - |

◀ **Product Video DS57U****PDF Data Sheet DS67U**
[GO.SHUTTLE.EU/icp8e](https://go.shuttle.eu/icp8e)

We see the DS67U as a versatile PC platform, which can in principle be used wherever efficiency, quietness and longevity are required.

DS67U3**Fanless Slim PC with Intel Core i3 processor***Same features as DS67U, but with:*

- Intel Core i3-6100U (2.3 GHz)
- Intel HD Graphics 520

PDF Data Sheet [GO.SHUTTLE.EU/w88ud](https://go.shuttle.eu/w88ud)
DS67U5**Fanless Slim PC with Intel Core i5 processor***Same features as DS67U, but with:*

- Intel Core i5-6200U (2.3 GHz)
- Intel HD Graphics 520

PDF Data Sheet [GO.SHUTTLE.EU/b2m4k](https://go.shuttle.eu/b2m4k)
DS67U7**Fanless Slim PC with Intel Core i7 processor***Same features as DS67U, but with:*

- Intel Core i7-6500U (2.5 GHz)
- Intel HD Graphics 520

PDF Data Sheet [GO.SHUTTLE.EU/ija6e](https://go.shuttle.eu/ija6e)
DS57U**Fanless Slim PC for 24/7 operation***Same features as DS67U, but with:*

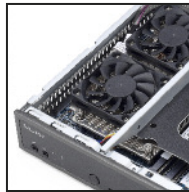
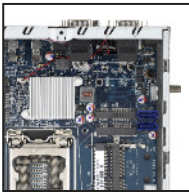
- Intel Celeron 3205U (1.5 GHz)
- Intel HD Graphics
- Mini-PCIe full-size (mSATA support)
- Wi-Fi Realtek 8188EE (802.11b/g/n)

PDF Data Sheet [GO.SHUTTLE.EU/p8nxy](https://go.shuttle.eu/p8nxy)

The DS57U is also available as DS57U3 (Core i3), DS57U (Core i5) and DS57U7 (Core i7).

ROBUST 43 MM THICK SLIM PC FOR INTEL LGA1151 SKYLAKE PROCESSORS

The DH170 barebone, which is based on the Intel H170 chipset, supports all sixth-generation Intel Celeron, Pentium and Core processors for socket LGA1151 (up to 65 Watt of TDP). Combined with 16 GB DDR3L RAM in dual-channel mode and a PCIe M.2-SSD, it is capable of remarkable speeds. The machine measures a mere 19 x 16.5 x 4.3 cm (DWH) and has a footprint not much bigger than half a sheet of A4 paper. The 43 mm flat steel case offers maximum protection from mechanical stresses and can also cope with ambient temperatures of up to 50 °C.



DH170

Approved for ambient temperatures up to 50 °C

| | | |
|---------------------------------|---------------|---|
| Colour | | Black |
| Complete system | | D 1700B, DH170XA |
| Processor | Socket | LGA1151 (Skylake) |
| | Supports | Intel Core i3/i5/i7, Pentium, Celeron, TDP max. 65 W |
| | Cooling | I.C.E. Heatpipe |
| Memory | | 2x 204-Pin SO-DIMM-slots, max. 2x 16 GB DDR3L-1600, Dual-Channel |
| Chipset | Northbridge | (Integrated in processor) |
| | Southbridge | Intel H170 chipset |
| | Audio | Realtek ALC662 (5.1 ch) |
| | LAN | 1x Intel i211 (Gigabit) supports WOL and PXE 1x Intel i219LM (Gigabit) supports WOL and PXE |
| Wireless network, Wi-Fi | | - |
| Integrated graphics | | Intel HD Graphics inside processor, UMA, supports three displays |
| Expansion slots | Graphics card | - |
| | PCI/M.2 | 1x M.2 type 2260 (PCIe + SATA), 1x Mini-PCIe-x1-2.0 half-size |
| Connectors, LEDs and buttons | Front | Card reader, microphone, headphones, 2x USB 3.0, 2x USB 2.0, power button, HDD-LED, Power-LED |
| | Rear | HDMI (w/ digital audio), 2x DisplayPort (w/ digital audio), 2x USB 3.0, 2x USB 2.0, 2x Gigabit Ethernet, 2x COM port (RS-232 and RS-232/422/485), K-Lock, clear CMOS button, remote Power-On, 5 Volt output |
| | Onboard | 1x SATA 6 Gbit/s, 2x USB 2.0, VGA, speaker output, microphone, Power-on-after-power-fail jumper |
| Drive bays and supported drives | | 1x 2.5" supports 1x 2.5" HDD/SSD, card reader: SD, SDHC & SDXC, 1x M.2 SSD |
| Power supply | | External 90 W power supply unit, Output: 19 V DC, Input: 100-240 V AC |
| BIOS | | AMI BIOS supports ACPI 3.0 and UEFI |
| Material | | Steel |
| Dimensions and weight | | 19.0 x 16.5 x 4.3 cm (LWH) = 1.35 L, 1.3 kg |
| Permitted ambient parameters | | Ambient temp. range: 0–50 °C, Air humidity: 10–90 % |
| Optional accessories | | Wi-Fi (WLN-S), VGA connector (PVG01) |

PDF Data Sheet DH170 [GO.SHUTTLE.EU/vvwhcm](https://go.shuttle.eu/vvwhcm)

Conventional PCs would go pale at the thought! This 43 mm flat barebone in a steel chassis is able to cope with ambient temperatures of up to 50 °C. Two Intel network cards, three monitor connections and two serial interfaces are ideal for out-of-the-ordinary IT scenarios.

DH110

Robust, flat and with new H110 chipset

Same features as DH170, but with:

- Intel H110 chipset
- 2x M.2
- 1x HDMI, 1x DisplayPort
- eSATA
- PS/2
- Supports two displays simultaneously

PDF Data Sheet [GO.SHUTTLE.EU/d08vn](https://go.shuttle.eu/d08vn)

DS81

Ideal to be used for professional vertical market applications

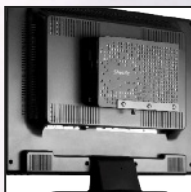
Same features as DH170, but with:

- Intel H81 chipset
- Support for LGA1150 CPUs
- 2x DDR3 SO-DIMM (total max. 16 GB)
- 2x Gigabit Ethernet Realtek 8111G
- 1x Mini-PCIe-x1-2.0 half-size, 1x full-size mSATA
- 6x USB 2.0, 2x USB 3.0
- Supports two displays simultaneously

PDF Data Sheet [GO.SHUTTLE.EU/k47ua](https://go.shuttle.eu/k47ua)

FANLESS AND RELIABLE 1-LITRE PC

The XS35V5 Pro represents the fifth generation of Shuttle's successful XS35 range and is the first XS35 model to sport an aluminium chassis while maintaining the proven key advantages such as high connectivity and a fanless cooling. The soldered Intel Celeron Dual Core processor, codenamed "Braswell", is manufactured in 14nm architecture and very energy efficient. Still, it clocks up to 2.16 GHz and brings Intel's powerful HD Graphics (8th Gen) that supports hardware acceleration for full HD video encoding/decoding on up to three displays. With appropriate SSDs or hard drives installed, the XS35V5 Pro is suitable for continuous 24/7 operation and the Mini PC of choice for office and media applications.



XS35V5 Pro

New chassis with aluminium sides

| | | |
|---------------------------------|---------------|--|
| Colour | | Black |
| Complete system | | XS 3500B5, XS35XF |
| Processor | Model | Intel Celeron N3050 |
| | Clock speed | 2x 1.6 GHz (Turbo 2.16 GHz), 2 Threads, 2 MB Cache |
| | Cooling | Passive, fanless |
| Memory | | 1x 204-Pin SO-DIMM-slot, max. 1x 8 GB DDR3L-1600 |
| Chipset | Northbridge | (Integrated in processor) |
| | Southbridge | (Integrated in processor) |
| | Audio | Realtek ALC269 |
| | LAN | Intel i211 (Gigabit) supports WOL |
| Wireless network, Wi-Fi | | Realtek RTL8188EE (802.11b/g/n, 150 Mbit) |
| Integrated graphics | | Intel HD Graphics, UMA, supports three displays |
| Expansion slots | Graphics card | - |
| | PCI/M.2 | - |
| Connectors, LEDs and buttons | Front | 1x USB 2.0, card reader, Power-LED, HDD-LED, power button |
| | Rear | HDMI (w/ digital audio), DisplayPort (w/ digital audio), VGA, 2x USB 3.0, 2x USB 2.0, microphone, headphones, Gigabit Ethernet, power supply, K-Lock |
| | Onboard | 2x SATA 6 Gbit/s, 1x USB 2.0 |
| Drive bays and supported drives | | 1x 2.5" and 1x slimline, supports 1x 2.5" HDD/SSD and 1x optical slimline drive, card reader: SD, SDHC, SDXC |
| Power supply | | External 40 W power supply unit, Output: 19 V DC, Input: 100-240 V AC |
| BIOS | | AMI BIOS supports ACPI 3.0 and UEFI |
| Material | | Aluminium and plastic |
| Dimensions and weight | | 25.2 x 3.85 x 16.2 cm (LWH) = 1.57 L, 2.1 kg |
| Permitted ambient parameters | | Ambient temp. range: 0–35°C, Air humidity: 10–90% |
| Optional accessories | | VESA mount (PV01), 2nd HDD/SSD expansion (PHD2) |

PDF Data Sheet [GO.SHUTTLE.EU/9p7dy](https://go.shuttle.eu/9p7dy)

More frugal than ever, XS35V5 Pro barely use less than 9 W during operation in a typical hardware configuration.

XS35V4

Space for two drives

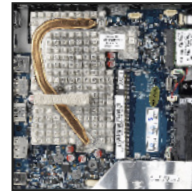
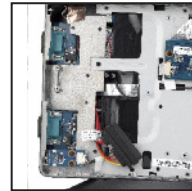
Same features as XS35V5 Pro, but with:

- Intel Celeron J1900 (2 GHz)
- Support for 1x 8 GB DDR3L-1333
- Gigabit Ethernet Realtek 8411
- 1x USB 3.0, 4x USB 2.0
- 2x SATA 3 Gbit/s
- Supports two displays simultaneously
- Sides of chassis made of plastic

PDF Data Sheet [GO.SHUTTLE.EU/r9p70](https://go.shuttle.eu/r9p70)

COMPLETELY FANLESS, EXCEPTIONALLY QUIET

The XS36V5 is the new model in Shuttle's successful XS36 range. The device has a thickness of only 36 mm and is completely fanless. In a team with an SSD drive it is quiet, virtually maintenance free and approved for reliable 24/7 nonstop operation. The energy-efficient Intel Celeron N3050 dual-core processor with its powerful graphics engine is suitable for a wide range of software applications including Full HD video encoding/decoding. Three monitor ports (HDMI, DisplayPort, VGA) allow for a flexible choice of up to three displays. In addition to USB 3.0, card reader, Gigabit Ethernet and Wi-Fi, it also provides two RS-232 interfaces for professional applications (e.g. device control).



XS36V5**Slim PC, fully-loaded**

| | | |
|---------------------------------|---------------|--|
| Colour | | Black |
| Complete system | | XS 3600B5, XS36XD |
| Processor | Model | Intel Celeron N3050 |
| | Clock speed | 2x 1.6 GHz (Turbo 2.16 GHz), 2 Threads, 2 MB Cache |
| | Cooling | Passive, fanless |
| Memory | | 1x 204-Pin SO-DIMM-slots, max. 1x 8 GB DDR3L-1600 |
| Chipset | Northbridge | (Integrated in processor) |
| | Southbridge | (Integrated in processor) |
| | Audio | Realtek ALC269 |
| | LAN | Intel i211 (Gigabit) supports WOL |
| Wireless network, Wi-Fi | | Realtek RTL8188EE (802.11b/g/n, 150 Mbit) |
| Integrated graphics | | Intel HD Graphics, UMA, supports three displays |
| Expansion slots | Graphics card | - |
| | PCI/M.2 | - |
| Connectors, LEDs and buttons | Front | 2x RS-232, 1x USB 2.0, card reader, Power-LED, HDD-LED, power button |
| | Rear | HDMI (w/ digital audio), DisplayPort (w/ digital audio), VGA, 2x USB 3.0, 2x USB 2.0, microphone, headphones, Gigabit Ethernet, power supply, K-Lock |
| | Onboard | 1x SATA 6 Gbit/s |
| Drive bays and supported drives | | 1x 2.5", supports 1x 2.5" HDD/SSD, card reader: SD, SDHC, SDXC |
| Power supply | | External 40 W power supply unit, Output: 19 V DC, Input: 100-240 V AC |
| BIOS | | AMI BIOS supports ACPI 3.0 and UEFI |
| Material | | Plastic |
| Dimensions and weight | | 22 x 3.6 x 16 cm (LWH) = 1.15 L, 1.6 kg |
| Permitted ambient parameters | | Ambient temp. range: 0-35°C, Air humidity: 10-90% |
| Optional accessories | | VESA mount (PV03) |

PDF Data Sheet [GO.SHUTTLE.EU/yexz3](https://go.shuttle.eu/yexz3)

Thanks to constantly shrinking dimensions, it has been possible over the years to accommodate even more computing power in the same format – and with reduced energy consumption.

XS36V4**Fanless 1-litre PC suitable for 24/7 operation**

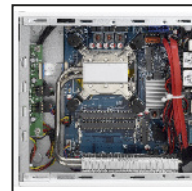
Same features as XS35V4, but with:

- Intel Celeron J1900 (2 GHz)
- Support for 1x 8 GB DDR3L-1333
- Gigabit Ethernet Realtek 8411
- 1x USB 3.0, 4x USB 2.0
- 1x SATA 3 Gbit/s
- Supports two displays simultaneously

PDF Data Sheet [GO.SHUTTLE.EU/kpk3h](https://go.shuttle.eu/kpk3h)

SLIM DESIGN PROVIDES SPACE FOR THREE DRIVES AND M.2-SSD

The ultra-compact XH170V is an ideal platform for a small, but highly powerful Mini PC. Not only in home environments as a low-noise multimedia system for 4K content, the XH170V also meets the requirements of an office machine and is suitable for industrial applications. It can drive up to three displays simultaneously, is equipped with Intel Gigabit Ethernet and has a practical always-on jumper that allows the PC to reboot instantly after power failure. The combination of an Intel LGA1151 processor and an SSD makes for an energy-efficient and reliable system for various scenarios. A heatpipe cooling system is pre-installed and ensures the XH170V runs silently and at maximum stability.



XH170V

Scalable from Office PC to 4K player

| | | |
|---------------------------------|---------------|--|
| Colour | | Black |
| Complete system | | X 1700B, DH170XA |
| Processor | Socket | LGA1151 (Skylake) |
| | Supports | Intel Core i3/i5/i7, Pentium, Celeron, TDP max. 65 W |
| | Cooling | I.C.E. Heatpipe |
| Memory | | 2x 204-Pin SO-DIMM-slots, max. 2x 16 GB DDR3L-1600, Dual-Channel |
| Chipset | Northbridge | (Integrated in processor) |
| | Southbridge | Intel H170 chipset |
| | Audio | Realtek ALC662 (5.1 ch) |
| | LAN | Intel i219LM (Gigabit) supports WOL and PXE |
| Wireless network, Wi-Fi | | - |
| Integrated graphics | | Intel HD Graphics inside processor, UMA, supports three displays |
| Expansion slots | Graphics card | - |
| | PCI/M.2 | 1x M.2 type 2280 (SATA), 1x Mini-PCIe-x1-2.0 half-size |
| Connectors, LEDs and buttons | Front | Microphone, headphones, 2x USB 3.0, 2x USB 2.0, power button with LED, HDD-LED |
| | Rear | HDMI (w/ digital audio), 2x DisplayPort (w/ digital audio), 2x USB 3.0, 2x USB 2.0, 6-channel audio, eSATA, Gigabit Ethernet, COM port (RS-232), K-Lock, clear CMOS button |
| | Onboard | 3x SATA 6 Gbit/s, 1x USB 2.0, Power-on-after-power-fail jumper |
| Drive bays and supported drives | | 2x 2.5" and 1x slimline supports up to 3x 2.5" HDD/SSD or 1x optical slimline drive with 2x 2.5" HDD/SSD, 1x M.2 SSD |
| Power supply | | External 90 W power supply unit, Output: 19 V DC, Input: 100-240 V AC |
| BIOS | | AMI BIOS supports ACPI 3.0 and UEFI |
| Material | | Steel |
| Dimensions and weight | | 24 x 20 x 7.2 cm (LWH) = 3.5 L, 2.2 kg |
| Permitted ambient parameters | | Ambient temp. range: 0-50°C, Air humidity: 10-90 % |
| Optional accessories | | Wi-Fi (WLN-S), vertical stand (PS01), VESA (PV02), 3.5" HDD mount (PHD4) |



◀ Product Video XH97V

PDF Data Sheet XH170V

GO.SHUTTLE.EU/e2wun

XH110V

Saves room and convinces with features

Same features as XH170V, but with:

- ▶ Intel H110 chipset
- ▶ 2x M.2
- ▶ 2x Gigabit Ethernet (Intel i211 & i219LM)
- ▶ 2x COM port, PS/2
- ▶ No eSATA
- ▶ Optional VGA output

PDF Data Sheet [GO.SHUTTLE.EU/xvehy](https://go.shuttle.eu/xvehy)

XH110V is also available as XH110 (No front doors).

XH97V

Efficient and powerful 3-litre PC

Same features as XH170V, but with:

- ▶ Intel H97 chipset
- ▶ Support for LGA1150 CPUs
- ▶ 2x DDR3 SO-DIMM (total max. 16 GB)
- ▶ Gigabit Ethernet (Realtek 8111G)
- ▶ 1x Mini-PCIe-x1-2.0 half-size, 1x Mini-PCIe-x1-2.0 full-size (mSATA support)

PDF Data Sheet [GO.SHUTTLE.EU/ch7hn](https://go.shuttle.eu/ch7hn)

XH81V

A blend of energy efficiency and performance

Same features as XH97V, but with:

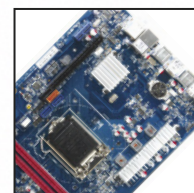
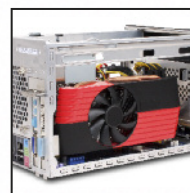
- ▶ Intel H81 chipset
- ▶ 2x Gigabit Ethernet (Realtek 8111G)
- ▶ 6x USB 2.0, 2x USB 3.0, 2x COM port
- ▶ 2x SATA 6 Gbit/s, 1x SATA 3 Gbit/s
- ▶ Supports two displays simultaneously
- ▶ No eSATA
- ▶ Available in black and white

PDF Data Sheet [GO.SHUTTLE.EU/7q19d](https://go.shuttle.eu/7q19d)

XH81V is also available as XH81 (No front doors, available in black only).

TAILORED TO YOUR NEEDS

This Mini PC with a stylish aluminium chassis supports the 6th generation of Intel Core desktop processors. The integrated graphics provides two digital video outputs for dual monitoring and can be enhanced by a high-performance graphics card for more demanding applications. The barebone is equipped with two PCI-Express and two M.2 slots for SSDs and multi-purpose expansion cards. Multi-display graphics, multi-LAN, TV tuner, RAID, M.2 SSDs or WLAN can be realised. For a personal look and feel, the front panel can be customised by adding individual designs to it.



SH110R4

Aluminium case with customisable front panel

| | | |
|---------------------------------|---------------|--|
| Colour | | Black |
| Complete system | | R4 1100B, SH110XA |
| Processor | Socket | LGA1151 (Skylake) |
| | Supports | Intel Core i3/i5/i7, Pentium, Celeron, TDP max. 95 W |
| | Cooling | I.C.E. Heatpipe |
| Memory | | 2x 288-Pin DIMM-slots, max. 2x 16 GB DDR4-2133, Dual-Channel |
| Chipset | Northbridge | (Integrated in processor) |
| | Southbridge | Intel H110 chipset |
| | Audio | Realtek ALC662 (5.1 ch) |
| | LAN | Intel i219LM (Gigabit) supports WOL and PXE |
| Integrated graphics | | Intel HD Graphics inside processor, UMA, supports two displays |
| Expansion slots | Graphics card | 1x PCI-Express-x16-3.0, supports dual-slot graphics cards, 6-pin power connector |
| | PCI/M.2 | 1x PCI-Express-x1-2.0, 1x M.2 type 2280 BM (PCIe + SATA), 1x M.2 type 2230 AE (PCIe + USB) |
| Connectors, LEDs and buttons | Front | Microphone, headphones, 2x USB 3.0, Power-LED, HDD-LED, power button |
| | Rear | HDMI, DisplayPort, VGA, 2x USB 3.0, 4x USB 2.0, Gigabit Ethernet, 6-channel audio, PS/2 combo, clear CMOS button, K-Lock |
| | Onboard | 3x SATA 6 Gbit/s, RS-232 |
| Drive bays and supported drives | | 1x 5.25" (for ODD), 2x 3.5" internal (e.g. for HDD, SSD), 1x M.2 SSD |
| Power supply | | 300 W 80 PLUS Bronze, Input: 100-240 V AC |
| BIOS | | AMI BIOS supports ACPI 3.0 and UEFI |
| Material | | Aluminium |
| Dimensions and weight | | 32.5 x 21.5 x 19 cm (LWH) = 13.3 L, 3.4 kg |
| Permitted ambient parameters | | Ambient temp. range: 0–35°C, Air humidity: 10–90% |
| Optional accessories | | 2.5" HDD/SSD expansion frame (PHD3), COM port (H-RS232), Wi-Fi expansion (WLN-M), PSU 500 W (PC63J) |

The SH110R4 offers high performance and flexibility at an attractive price.

SH81R4

Entry-level Mini PC for cost-conscious users

Same features as SH110R4, but with:

- Intel H81 chipset
- Support for LGA1150 CPUs
- 2x DDR3 DIMM (total max. 16 GB)
- Gigabit Ethernet Realtek 8111E
- 1x Mini-PCIe-x1-2.0 half-size, 1x Mini-PCIe-x1-2.0 full-size (mSATA support)
- 8x USB 2.0, 2x USB 3.0
- 2x SATA 6 Gbit/s, 1x SATA 3 Gbit/s
- 1x HDMI, 1x DVI-I

PDF Data Sheet [GO.SHUTTLE.EU/iv9zp](https://go.shuttle.eu/iv9zp)



◀ Product Video SH81R4

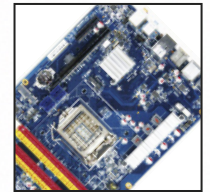
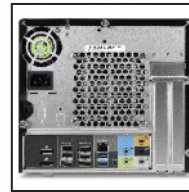
PDF Data Sheet SH110R4

[GO.SHUTTLE.EU/4il4d](https://go.shuttle.eu/4il4d)



SPACE-SAVING MINI PC WORKSTATION

The XPC Barebone SH170R6 was the first machine in the Shuttle Mini PC product range to pack the 6th generation of Intel Core processors, codenamed "Skylake". The model promises more performance, more features and less energy consumption. A further new feature on board is support for DDR4 memory modules and this, for the very first time, up to a maximum capacity of 64 GB. And for those who seriously want everything, it is possible to install PCIe one x16 3.0 graphics card and two M.2 expansion cards. Being able to run three 4K monitors simultaneously, opens up unrivalled space for creativity. What can you create with the Shuttle XPC Barebone SH170R6?



SH170R6

Classic cube format comes brimming with features more than ever

| | | |
|---------------------------------|---------------|--|
| Colour | | Black |
| Complete system | | R6 1700H, SH170XA |
| Processor | Socket | LGA1151 (Skylake) |
| | Supports | Intel Core i3/i5/i7, Pentium, Celeron, TDP max. 95 W |
| | Cooling | I.C.E. Heatpipe |
| Memory | | 4x 288-Pin DIMM-slots, max. 4x 16 GB DDR4-2133, Dual-Channel |
| Chipset | Northbridge | (Integrated in processor) |
| | Southbridge | Intel H170 chipset |
| | Audio | Realtek ALC892 (7.1 ch) |
| | LAN | Intel i219LM (Gigabit) supports WOL and PXE |
| Integrated graphics | | Intel HD Graphics inside processor, UMA, supports three displays |
| Expansion slots | Graphics card | 1x PCI-Express-x16-3.0, supports dual-slot graphics cards, 6-pin power connector |
| | PCI/M.2 | 1x PCI-Express-x4-3.0, 1x M.2 type 2280 BM (PCIe + SATA), 1x Mini-PCIe-x1-2.0 half-size |
| Connectors, LEDs and buttons | Front | Microphone, headphones, 2x USB 3.0, 2x USB 2.0, Power-LED, HDD-LED, power button |
| | Rear | HDMI (w/ digital audio), 2x DisplayPort (w/ digital audio), 6x USB 3.0, eSATA, Gigabit Ethernet, 8-channel audio, clear CMOS button |
| | Onboard | 4x SATA 6 Gbit/s, 2x USB 2.0, RS-232, LPC |
| Drive bays and supported drives | | 1x 5.25" (for ODD), 2x 3.5" internal & external (e.g. for HDD, SSD, card reader), supports RAID 0, 1, 5, 10, JBOD and SRT, 1x M.2 SSD |
| Power supply | | 300 W 80 PLUS Bronze, Input: 100-240 V AC 50/60 Hz |
| BIOS | | AMI BIOS supports ACPI 3.0 and UEFI |
| Material | | Aluminium |
| Dimensions and weight | | 33.2 x 21.6 x 19.8 cm (LWH) = 14.2 L, 3.5 kg |
| Permitted ambient parameters | | Ambient temp. range: 0–35°C, Air humidity: 10–90 % 2.5" HDD/SSD expansion frame (PHD3), COM port (H-RS232), Wi-Fi expansion (WLN-C), Wi-Fi expansion (WLN-M), PSU 500 W (PC63J) |
| Optional accessories | | |

No other platform offers such an outstanding balance between small footprint and impressive choice of features. Up to 64 GB of DDR4 memory, Core i7 processor, three drives, M.2-SSD, three 4K displays or a dual-slot graphics card? You can have it all.

SH97R6

Powerful and energy-efficient desktop PC platform

Same features as SH170R6, but with:

- Intel H97 chipset
- Support for LGA1150 CPUs
- 4x DDR3 DIMM (total max. 32 GB)
- Gigabit Ethernet (Realtek 8111G)
- 1x PCIe-x4-2.0
- 1x Mini-PCIe-x1-2.0 half-size
- 1x Mini-PCIe-x1-2.0 half-size (mSATA support)
- 6x USB 2.0, 4x USB 3.0

PDF Data Sheet  GO.SHUTTLE.EU/pvnjz



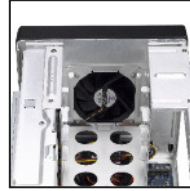
◀ **Product Video SH97R6**

PDF Data Sheet SH170R6

 GO.SHUTTLE.EU/ax9vi

THE R8 AMONG THE XPC CUBES

The Shuttle XPC Barebone SZ170R8, as the company's first model, is able to accommodate up to four 3.5 inch hard drives which makes an overall maximum capacity of up to 40 TB a reality. Ideal for both home and commercial applications. Still, there's much room for expansion in the form of a M.2-SSD for PCI-E which means transfer rates of up to 2,5 GB/s making it up to four times faster as compared to current SATA-SSDs. However this barebones platform is way more than just about storage – the SH170R8 has enough grunt under its aluminium bonnet to be a high-end gaming PC or a workstation for intensive appli-



cations with graphics or even videos. The mainboard sports Intel's high-performance Z170 chipset that is designed for 6th-gen LGA 1151 Skylake processors up to the top-end Core i7 ones of the K-Series. Additionally, large dual-slot graphics cards and up to 64 GB of DDR4 memory can be fitted.



SZ170R8**The world's only 4-bay Mini PC Barebone with Intel Z170 chipset**

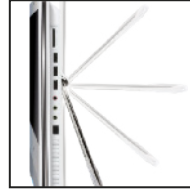
| | | |
|---------------------------------|---------------|---|
| Colour | | Black |
| Complete system with OS | | R8 1710P, SZ170XB |
| Processor | Socket | LGA1151 (Skylake) |
| | Supports | Intel Core i3/i5/i7, Pentium, Celeron, TDP max. 95 W |
| | Cooling | I.C.E. Heatpipe |
| Memory | | 4x 288-Pin DIMM-slots, max. 4x 16 GB DDR4-2133, Dual-Channel |
| Chipset | Northbridge | (Integrated in processor) |
| | Southbridge | Intel Z170 chipset |
| | Audio | Realtek ALC892 (7.1 ch) |
| | LAN | Intel i219LM (Gigabit) supports WOL and PXE |
| Integrated graphics | | Intel HD Graphics inside processor, UMA, supports three displays |
| Expansion slots | Graphics card | 1x PCI-Express-x16-3.0, supports dual-slot graphics cards, 6+8-pin power connector |
| | PCI/M.2 | 1x PCI-Express-x4-3.0, 1x M.2 type 2280 BM (PCIe + SATA), 1x Mini-PCIe-x1-2.0 half-size |
| Connectors, LEDs and buttons | Front | Microphone, headphones, 2x USB 3.0, Power-LED, HDD-LED, power button |
| | Rear | HDMI (w/ digital audio), 2x DisplayPort (w/ digital audio), 6x USB 3.0, eSATA, Gigabit Ethernet, 8-channel audio, clear CMOS button |
| | Onboard | 4x SATA 6 Gbit/s, 2x USB 2.0, RS-232, LPC |
| Drive bays and supported drives | | 4x 3.5" internal, supports RAID 0, 1, 5, 10, JBOD and SRT, 1x M.2 SSD |
| Power supply | | 500 W 80 PLUS Silver, Input: 100-240 V AC |
| BIOS | | AMI BIOS supports ACPI 3.0 and UEFI |
| Material | | Aluminium |
| Dimensions and weight | | 33.2 x 21.6 x 19.8 cm (LWH) = 14.2 L, 3.5 kg |
| Permitted ambient parameters | | Ambient temp. range: 0–35°C, Air humidity: 10–90% |
| Optional accessories | | 2.5" HDD/SSD expansion frame (PHD3), COM port (H-RS232), Wi-Fi expansion (WLN-C), Wi-Fi expansion (WLN-M) |

This unique platform delivers extreme performance in digital content creation and in many other areas where huge volumes of data need to be processed extremely quickly.

PDF Data Sheet  [GO.SHUTTLE.EU/4h3nw](https://go.shuttle.eu/4h3nw)

ALL-IN-ONE PC FOR POS, POI, KIOSK APPLICATIONS

The Shuttle All-in-One PC X50V5 is the latest addition to the X50 Series and is powered by Intel's Celeron 3855U processor. The latest 14nm Skylake architecture helps improve on power consumption and computing power. Thanks to its passive cooling, the system is virtually noiseless, maintenance-free and is approved for 24/7 nonstop operation. Particularly suitable for vertical applications is the arrangement of connectors at the bottom and the IP54-compliant front panel which is dust-protected and protected from splashing of water.



X50V5

All-in-One PC for unconventional applications

| | | |
|---------------------------------|-------------------------|---|
| Colour | | Black or White |
| Complete system | | X 5050T, X50X5A |
| Processor | Model | Intel Celeron 3855U |
| | Clock speed | 2x 1.6 GHz, 2 Threads, 2 MB Cache |
| | Cooling | Passive, fanless |
| Memory | | 1x 204-Pin SO-DIMM-slot, max. 1x 16 GB DDR3L-1600 |
| Chipset | Northbridge | (Integrated in processor) |
| | Southbridge | (Integrated in processor) |
| | Audio | Realtek ALC269 |
| | LAN | Intel I219LM (Gigabit) supports WOL and PXE |
| Wireless network, Wi-Fi | | Realtek RTL8821AE (802.11ac) |
| Integrated graphics | | Intel HD Graphics 510, UMA, supports three displays |
| Expansion slots | Graphics card | - |
| | PCI/M.2 | 1x M.2 type 2280 (PCIe + SATA) |
| Screen | Resolution | 39.6 cm/15.6" LCD display, LED backlight, 16:9 widescreen, resolution: 1.366 x 768 |
| | Touchscreen | Resistive, single-touch |
| Communication | Webcam | 2.0 Megapixel (1.600 x 1.200) |
| | Speakers and microphone | 2x 2 W speakers, capacitor microphone |
| Connectors, LEDs and buttons | Front | Power LED, HDD LED |
| | Rear | VGA |
| | Side | Power button, 2x USB 2.0, card reader |
| | Bottom | HDMI (w/ digital audio), 2x USB 3.0, 2x USB 2.0, Gigabit Ethernet, microphone, headphones, power supply |
| | Onboard | 1x USB 2.0, 1x SATA 6 Gbit/s |
| Drive bays and supported drives | | 1x 2.5" supports 1x 2.5" HDD/SSD, card reader: SD, SDHC, SDXC, 1x M.2 SSD |
| Power supply | | External 65 W power supply unit, Output: 19 V DC, Input: 100-240 V AC |
| BIOS | | AMI BIOS supports ACPI 3.0 and UEFI |
| Material | | Plastic |
| Dimensions and weight | | 4.2 x 39.1 x 32.7 cm (LWH) = 3.08 kg |
| Permitted ambient parameters | | Ambient temp. range: 0-40°C, Air humidity: 10-90 % |
| Optional accessories | | COM/LPT expansion (PCL71 and POS01), carrying bag (PF55) |

As well as offering maximum expandability, it is also particularly quiet and durable thanks to the machine's fanless design. With the X50V5 we are again underscoring our ambition to attract new customers in vertical application markets.

X50V4

All-in-One PC Barebone with a touchscreen

Same features as X50V5, but with:

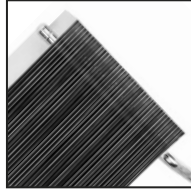
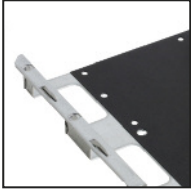
- Intel Celeron Processor 2957U (1.4 GHz)
- 1x DDR3L SO-DIMM (max. 8 GB)
- Intel HD Graphics
- Gigabit Ethernet (Realtek 8111G)
- Wi-Fi 802.11b/g/n (Realtek RTL8188EE)
- mSATA

PDF Data Sheet [GO.SHUTTLE.EU/bno9z](https://go.shuttle.eu/bno9z)

PDF Data Sheet [GO.SHUTTLE.EU/bj9wg](https://go.shuttle.eu/bj9wg)

SHUTTLE XPC ACCESSORIES

Extend the possibilities of your Shuttle products with the clever line-up of accessories. Shuttle offers handy carrying bags, beefy power supplies, additional ports to enhance connectivity and special mounting kits.



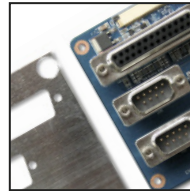
**CARRYING
BAG**



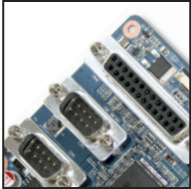
STAND



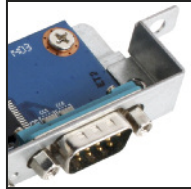
HEATPIPE



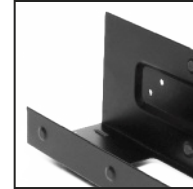
**WIRELESS
LAN**



**I/O
EXPANSION
KITS**



**VESA
MOUNT
KITS**



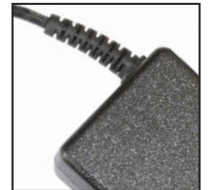
**DRIVE
RACKS**



**VGA
CONNECTOR
CABLE**



**POWER
SUPPLIES**



ACCESSORIES COMPATIBILITY

This overview will help you find the suitable accessory for your Shuttle product

| Item | Description | Compatible with |
|---------|----------------------------------|--|
| PE90 | 90W power adapter | DS61, DS81, DS81L, DS87, DH110, DH170, XH61, XH61V, XH81, XH81V, XH97V, XH110, XH110V, XH170V, DS47, DS437, DS407T, DS437T, DS57U, DS57U3, DS57U5, DS57U7, KD20, KD21, KD22, KS10, X50, X50V4, X50V5 |
| PC55 | 450W power supply | SB81P, SB95P, SB95PV2, SD31P, SD37P2, SD39P2, SN25P, SN26P, SN27P2 |
| PC61J | 300W power supply 80+ | SH87R6, SH67H3, SH67H7, SN78SH7, SG45H7, SP45H7, SG41J1, SG41J4, SH55J2, SH61R4 |
| PC63J | 500W power supply 80+ | SH87R6, SZ87R6, SH67H3, SH67H7, SN78SH7, SG45H7, SP45H7, SX58H7, SX58H7 Pro, SG41J1, SG41J4, SH55J2, SX58J3, SH61R4, SH81R4, SZ68R5, SZ77R5, SX79R5 |
| PC45G | 250W power supply 80+ | G, G2, G5, G6 and ST61G4, D10, D1416S (unsupported: SD11G5, SD31G2, SG31G5, SK83G, SN85G4, SN95G5, ST20G5) |
| PF55 | Carrying bag | X50, X50V2, X50V2 Plus, X50V3, X50V3L, X50V4, X50V5 |
| PM65 | Heatpipe cooling system | SG41J1 |
| PV01 | VESA kit | XS35, XS35V2, XS35V3, XS35V3L, XS35V4, XS35GTV2, XS35GTA V2, XS35GTA V3, XS35GS V2, XS35GS V3L |
| PV02 | VESA kit | XG41, XH61, XH61V, XH81, XH81V, XH97V, XH110, XH110V, XH170V |
| PV03 | VESA kit | XS36V, XS36VL, XS36V4, XS36V5 |
| PVG01 | VGA adapter | DS81, DS81L, DS87, DH110, DH170 |
| PS01 | Vertical stand | XG41, XH61, XH61V, XH81, XH81V, XH97V, XH110, XH110V, XH170V |
| H-RS232 | 1x COM port | SA76R4, SH67H3, SH67H7, SH61R4, SH81R4, SZ68R5, SZ77R5, SH87R6, SH97R6, SZ87R6, SX79R5, XH110, XH110V |
| PCL69 | 2x COM, 1x LPT expansion | X50V3, X50V3L |
| PCL70 | 2x COM, 1x LPT expansion | X70S, X70M |
| PCL71 | 2x COM, 1x LPT expansion | X50V4, X50V5 |
| POS01 | 4x COM, 1x LPT, 1x DIO expansion | X50V4, X50V5 |
| PCM3 | 3x COM expansion | XH81 |
| PHD4 | 3.5" HDD expansion frame | XH81, XH81V, XH97V, XH110, XH110V, XH170V |
| PHD2N | Adapter for 2nd 2.5" drive | XS35, XS35V2, XS35V3, XS35V3L, XS35V4, XS35V5 Pro, XS35GTV2, XS35GTA V2, XS35GTA V3, XS35GS V2, XS35GS V3L |
| PHD3 | 2.5" HDD/SSD expansion frame | XPC cubes |
| WLN-S | Wi-Fi expansion | XG41, DS61, DS81, DS81L, DS87, DH170, XH61V, XH81, XH81V, XH97V, XH170V |
| WLN-C | Wi-Fi expansion | SX79R5, SH87R6, SH97R6, SH170R6, SZ77R5, SZ68R5, SZ87R6, SZ170R8, SH67H3, SH67H7, SH61R4, SH81R4 |
| WLN-P | Wi-Fi expansion | SX79R5, SH87R6, SH97R6, SZ77R5, SZ68R5, SZ87R6, SH67H3, SH67H7, SH61R4, SH81R4, XG41, DS61, DS81, DS81L, DS87, XH61V, XH81, XH81V, XH97V, DH170, XH170V, SH170R6, SZ170R8 |
| WLN-M | Wi-Fi expansion | DH110, DH170, XH110V, XH170V, SH110R4, SH170R6, SZ170R8 |
| XVB01 | VGA expansion box | NC01U, NC01U3, NC01U5, NC01U7 |
| XLB01 | LAN expansion box | NC01U, NC01U3, NC01U5, NC01U7 |
| XCB01 | COM expansion box | NC01U, NC01U3, NC01U5, NC01U7 |

SHUTTLE RESELLER PROGRAM

For retailers, Shuttle offers registered members of the "Shuttle Reseller Program" an extended warranty of up to 3 years and a Pick-Up-and-Return service. Find out more at: WWW.SHUTTLE.EU/RESELLER

RES€LLER PROGRAM

3-YEAR WARRANTY AND ADDITIONAL GUARANTEE SERVICE

Only registered resellers benefit from extended warranty periods and additional guarantee services. Learn more about these advantages in the Shuttle Reseller Program.

TAKE PART IN REGULAR SPECIAL PROMOTIONS AND INCREASE YOUR PROFIT MARGIN

Participants of the Shuttle Reseller Program can take part in bonus programs (kickback, complimentary items, special prices). All the details are available in the Reseller area of Shuttle's website.

PROFESSIONAL SUPPORT FOR TECHNICAL QUERIES

Our technical support department is at your disposal for all questions about Shuttle products. They can be reached by phone or email during regular business hours and can handle queries in English, German or French.

USE DIRECT RMA SERVICE

Shuttle partners have the ability to benefit from Direct RMA Service from Shuttle. All you need to do is send us your defective Shuttle Barebones and we will repair them as quickly as possible.

TELEPHONE ADVICE AND DIRECT CONTACT WITH OUR EUROPEAN SALES TEAM

Our sales team is available by phone or email to help you with questions about new products, special projects or anything else Shuttle-related in English, German or French.

MEET US IN PERSON

Shuttle is represented at several industry trade fairs and events over the course of the year. Where and when? Find out in the Business Area on our website, choose the time and date and pay us a visit.

KEEP UP-TO-DATE WITH THE LATEST INFORMATION AND PUBLICATIONS

You will always receive the latest information about new products, press releases and special activities. Official partners remain a step ahead of the competition.

ADVERTISE YOURSELF AS AN OFFICIAL SUPPLIER

Registered resellers can apply to be listed in the "Where to Buy" section of Shuttle's website.

HAVE IT YOUR WAY

With the "Shuttle Systems Configurator" you can create your desired turnkey systems based on a Shuttle Barebone product. After selecting the required hardware components and Windows version, you can request a non-binding quotation from an authorised dealer of your choice.

Configure Shuttle complete systems online at:
WWW.SHUTTLE.EU/SYSTEMS

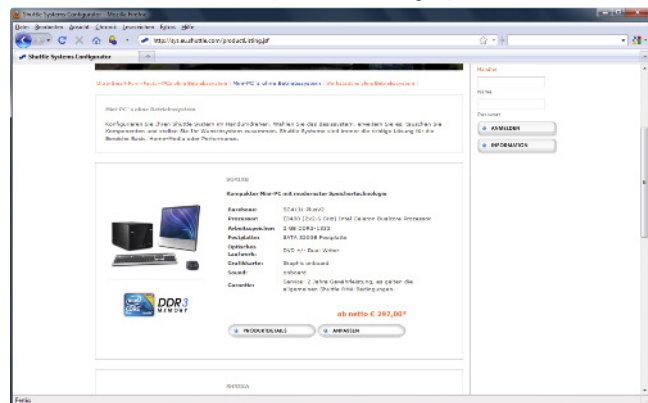
Shuttle® SYSTEMS CONFIGURATOR

IT'S EASY TO USE AND HAS LOTS OF BENEFITS

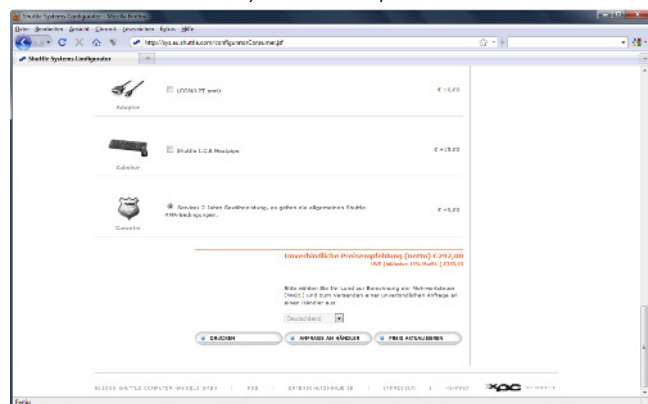
- ▶ Original Shuttle complete system
- ▶ Custom configuration (built-to-order)
- ▶ Manufactured and tested directly by Shuttle in Germany
- ▶ 24-month Pick-Up-And-Return service for Windows-based complete systems
- ▶ Many Windows 7 / 10 operating systems as Shuttle OEM version
- ▶ Free Service Hotline
- ▶ Free shipping



Select product category



Find your desired product



Configure and send request for quotation

CUSTOMISING

Do you have out-of-the-ordinary project requirements? Do you need adaptations to the BIOS, motherboard or case? If one of our products is basically suitable for your purposes, but needs a few adjustments, please talk to our sales team about your requirements. Together we will find a solution.

SUPPLIERS

We have an extensive network of distributors throughout Europe. Independent suppliers, retailers, e-tailers, system suppliers, value-added resellers and system integrators have quick and easy access to every product in our range. Visit our website for a list of suppliers in your region. If your country is not quoted there, please contact Shuttle.

Would you like to be listed as an official supplier? Shuttle's European website is a valuable source of information for consumers. Would you like your company to be the answer to one of the following FAQs?

- In which online shop can I find Shuttle products?
- Where can I find Shuttle products in my region?

Register with us now to become an official supplier! For further information please contact us at reseller@shuttle.eu



CONTACT DETAILS

Shuttle Computer Handels GmbH

Fritz-Strassmann-Str. 5 · 25337 Elmshorn · Germany

Telephone: +49 (0)4121-476 860 · Email: sales@shuttle.eu



WWW.FACEBOOK.COM/SHUTTLE.EUROPE



WWW.YOUTUBE.COM/SCHGERMANY



WWW.TWITTER.COM/SHUTTLE_EUROPE

www.shuttle.eu



Issue Q2/2016

Shuttle[®]