

Dell Workgroup Laser Printer M520n



DELL™ MAKES IT EASY TO BUY, USE AND OWN PRINTERS

Easy to buy

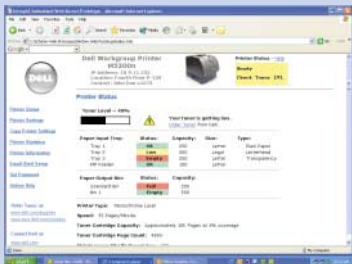
- Fast, sharp printing
- High-volume print capacity – perfect for larger workgroups
- Dell Direct Advantage: order online or through our professional sales team
- Low Total Cost to purchase, operate and maintain

Easy to use

- Dell Printer Configuration Web Tool
- Low maintenance with high-yield toner and multiple media and drawer options
- Convenient toner installation using drop-in cartridge design

Easy to own

- Convenient toner ordering and delivery with Dell Toner Management System™
- Industry-leading Dell service and support
- One-stop shopping and support with Dell printers, systems and networking



Dell Printer Configuration Web Tool

Designed for easy installation, configuration and management of Dell network printers and consumables, this web-based tool can be set up to provide automatic e-mail notifications of printer, consumables and paper-handling alerts.

- Can be accessed using a standard web browser
- Doesn't require additional software installation
- Resides on printer hardware

Designed specifically for the requirements of the larger workgroup, the **Dell Workgroup Laser Printer M520n** meets high-quality, high-volume needs with a low total cost of printing.

With a compact industrial design, the Dell M520n delivers high-speed printing of up to 35 pages per minute (ppm) for optimal productivity. Its 300MHz processor and standard 64MB memory (320MB max.) deliver enough power to print high-quality, complex documents quickly. With 1200 x 1200-dpi resolution and flexible media options, large workgroups can produce professional, impressive-looking documents every time. The M520n supports high-volume printing, with a duty cycle of up to 175,000 pages per month.

The M520n offers easy setup and installation through USB and 10/100BaseT Ethernet ports. Configuration and management of your M520n network printer are simple, too, with the Dell Printer Configuration Web Tool. What's more, the Dell Toner Management System monitors toner levels proactively and notifies you before you run out.

The Dell Workgroup Laser Printer M520n delivers:

Outstanding performance

- Fast printing, up to 35ppm
- Sharp print quality, 1200 x 1200dpi
- 300MHz processor
- 64MB standard memory (320MB max.)
- High-volume print capacity, up to 175,000-pages-per-month duty cycle
- High-yield toner cartridge option, approximately 18,000 pages at 5% coverage

Flexible media options

- Letterhead, envelopes, card stock, labels and transparencies
- Optional 500-sheet duplex tray
- Optional 500-sheet tray
- Optional 250-sheet tray
- Duplex and envelope feeder options

Easy management

- USB and 10/100BaseT Ethernet ports
- Dell Printer Configuration Web Tool for remote configuration and management
- Dell Toner Management System tells you when toner is low
- Standard and high-yield toner cartridges

Quality Dell service & support

- One-year Next-Business-Day On-site Service¹
- Two-, three- and four-year Extended Service options
- Options include Printer Gold Technical Phone Support, Installation and Asset Tagging
- Limited lifetime toner cartridge warranty

Convenience – easy-to-get toner

- Order toner online with Dell
- Direct link to website from "low toner" alert
- Delivery (three- to five-day) included at no additional charge
- Environmentally friendly: Dell pays postage and packing to return toner cartridges** to Dell for recycling

Exceptional performance. Easy as



Visit www.euro.dell.com for more information.

Dell Workgroup Laser Printer M5200n

DELL TONER MANAGEMENT SYSTEM™ IS AS EASY AS 1-2-3

1. Intelligent software alerts you when toner levels are low. Specify the recipient of the alert using the Dell Printer Configuration Web Tool.
2. Click "Order Toner Online" to visit Dell online
3. Select printer model, enter your payment information and your toner is ordered. Save time and money with no-charge three- to five-day delivery.

SERVICE AND SUPPORT

One year of Next-Business-Day On-site Service¹ provided by Dell's award-winning service and support staff

- You can extend your Next-Business-Day On-site Service by up to four years
- Installation, Gold Technical Support and Premier Access options are also available
- You can use the Dell Online Support site for the most up-to-date drivers and technical information about your printer

RECYCLING MADE SIMPLE

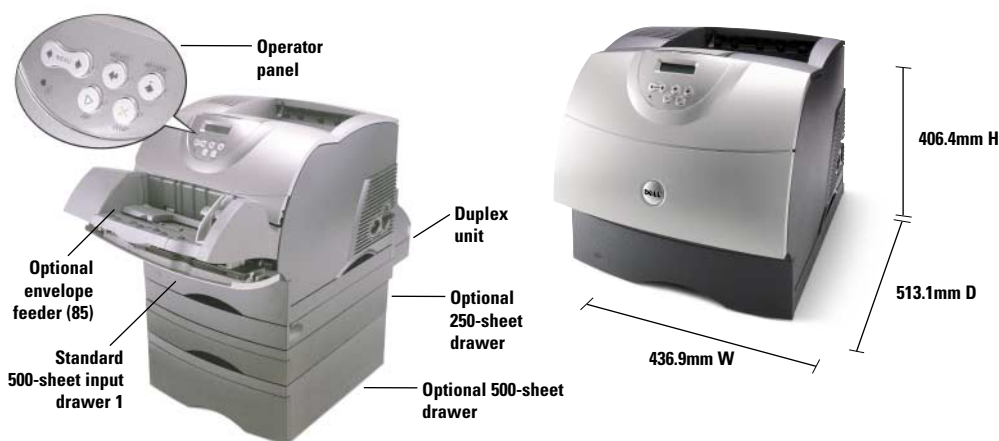


Recycling printers and toner with Dell is easy, safe and without charge to the customer.

- Each Dell printer includes instructions for returning an old printer for recycling
- Dell toner cartridges include a prepaid label to return the used cartridge for recycling
- Dell pays postage and packing for printer and toner recycling

Features	Description
Printer Description	Compact industrial design – Midnight Grey and Ion Silver
Printer Type	Monochrome workgroup laser printer
Print Speed	Up to 35ppm
Processor	300MHz
Memory	64MB standard memory (320MB max.)
Duty Cycle	175,000 pages per month
Max. Resolution	1200 x 1200dpi
Media Types	Standard paper, legal, card stock, labels, transparencies, envelopes
Media Sizes	76.2mm x 127mm to 215.9mm x 355.6mm
Standard Input Tray	500-sheet, 100-sheet multi-purpose (10 envelope)
Optional Input	500-sheet duplex tray, 500-sheet tray, 250-sheet tray
Printer Cartridges	Supplied with 12,000-page* Use & Return** cartridge, 18,000-page* Use & Return** cartridge available
Printer Languages	PostScript Level 3 Emulation, PCL 6 Emulation, PCL 5e Emulation
Fonts Support	89 scalable PCL, 158 scalable PostScript
Connectivity	USB port, 10/100BaseT Ethernet port (cables not included)
OS Supported	Microsoft® Windows® XP, 2000, NT® 4.0, 98, 95, Me, Novell® (4.2, 5.1, 6.0) ² , Linux® (7.3, AS 2.1) ²
Dimensions	406.4mm (H) x 436.9mm (W) x 513.1mm (D)
Weight	20.41kg
Printer Management	Dell Printer Configuration Web Tool
Power	Power cord included, 240-volt capacity, Energy Star®-compliant 580W power consumption operating (95W standby, 16W sleep)
Standard Service	One-year Next-Business-Day On-site Service ¹
Humidity Range Operating	8-80% relative humidity
Max./Min. Operating Temperature	32°C/15.6°C
Sound Emission	Idle 31dBA, Simplex 52dBA
Service Options	Two-, three- and four-year Extended Service options

*Approximate page yield is based on 5% coverage. **Use & Return cartridges are available for Dell's laser printers. Dell's Use & Return programme is a printer toner cartridge discount programme that avoids the hassle of traditional rebates. If you choose Use & Return, in exchange for the up-front discount, you agree to use the cartridge only once, and to return the empty cartridge only to Dell for recycling. You don't have to choose Use & Return products if you want other recycling options. Use & Return saves you money on a new, top-quality product while helping keep materials out of landfill sites. Dell provides packaging and postage for returning empty cartridges for recycling.



Subject to availability, prices and specifications are correct at the date of publication and may change without notice. Dell's Terms and Conditions of Sale and Service apply and are available on request and at www.euro.dell.com. 1. Response times may vary according to the remoteness or accessibility of product location. Service may be provided via telephone or Internet where appropriate. Certain restrictions apply. In the UK consumers are entitled to cancel orders within 7 working days of delivery. Product return at the cost and risk of the consumer. Dell collection charge £49.00 + VAT. 2. Technical support for Novell and Linux requires the purchase of Gold Technical Support. Dell, the Dell logo and Dell Toner Management System are registered trademarks or trademarks of Dell Computer Corporation. Microsoft, Windows and NT are registered trademarks or trademarks of Microsoft Corporation. Novell is a registered trademark of Novell, Inc. Linux is a registered trademark of Linus Torvalds. Energy Star is a registered trademark of the United States Environmental Protection Agency. Dell disclaims proprietary interest in the trademarks and names of others. © 2003 Dell Computer Corporation. All rights reserved.

EU861/07August2003

Exceptional performance. Easy as **DELL™**

Visit www.euro.dell.com for more information.