

owner's guide



MZ1000



MZ1100



MZ1200



PHILIPS



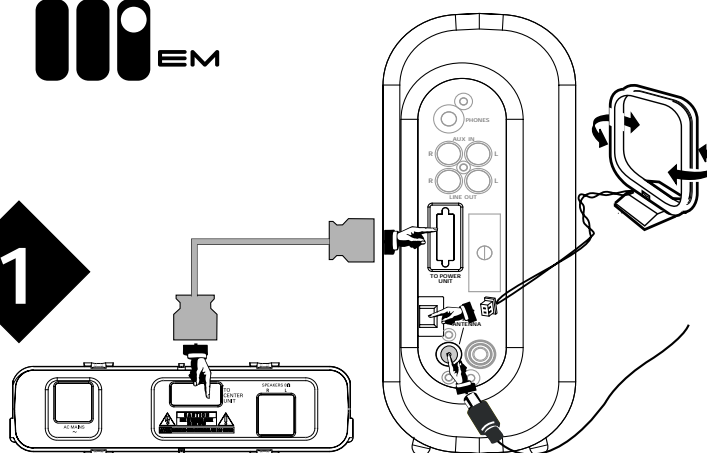
PHILIPS

12nc : 3139 115 21851

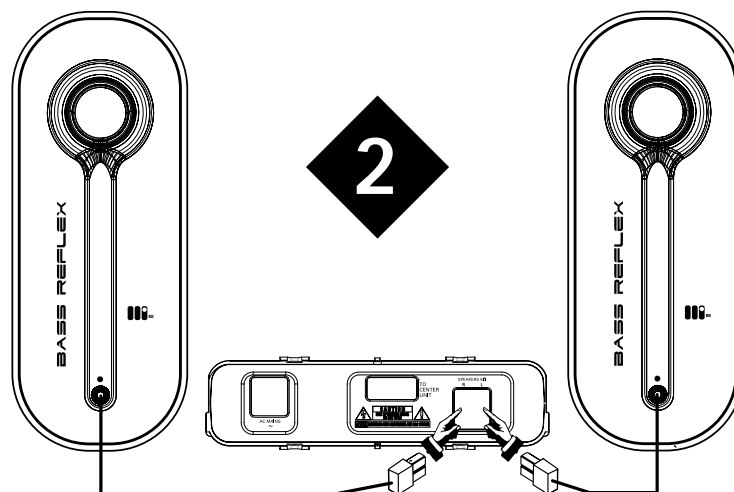
MZ-1000
MZ-1100
MZ-1200



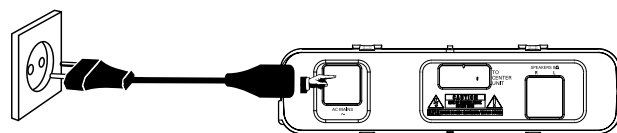
1



2



3



Quick Use Guide

Detailed playback features and additional functions are described in the accompanying owner's manual.

⇄ Listening to radio station

First time power up...

- 1 "AUTO INSTALL PRESS PLAY" appears on the display.
- 2 Press **PLAY•PAUSE** ►|| on the system.
- 3 Once completed, you can listen to the last tuned radio station.
If "P" appears on the display, you can press ◀◀ ▶▶ to select the previous/next presetting radio stations.
When tuning to a weak reception or non-preset radio station, press ►|| to deactivate the preset mode ("P" will disappear from the display), then press ◀◀ ▶▶.

⇄ Listening to a CD/MP3-CD

- 1 Load in a CD/MP3 CD with the label facing right.
- 2 **For MP3-CD**, press ◀◀ ▶▶ to select the album, followed by ►|| to confirm, then press ◀◀ ▶▶ again to select the track.
For CD, press ◀◀ ▶▶ to select the track.
- 3 Press ►|| to start playback.
During playback, hold down ◀◀ ▶▶ to search backward/forward.
During playback, press ◀◀ ▶▶ briefly and repeatedly to skip backward/forward.
- 4 Press ■ to stop playback.
- 5 Press **STOP•EJECT** ■ to eject the disc.

⇄ Setting the Clock

- 1 In standby mode, press **CLK/TIMER**.
- 2 Press or hold down ◀◀ ▶▶ to set minutes and hours.
- 3 Press **PROGRAM** to select 12- or 24-hour clock mode.
- 4 Press **CLK/TIMER** to confirm the clock setting.

⇄ Switching to or waking up from Eco Power standby mode

- 1 Hold down **ECO POWER** or ⏻ to switch on Eco Power standby mode.
- 2 Press **ECO POWER** on the system or **MP3-CD**, **TUNER** or **AUX** on the remote control to wake up from Eco Power standby mode.

Important notes for users in the U.K.

Mains plug

This apparatus is fitted with an approved 13 Amp plug. To change a fuse in this type of plug proceed as follows:

- 1 Remove fuse cover and fuse.
- 2 Fix new fuse which should be a BS1362 5 Amp, A.S.T.A. or BSI approved type.
- 3 Refit the fuse cover.

If the fitted plug is not suitable for your socket outlets, it should be cut off and an appropriate plug fitted in its place.

If the mains plug contains a fuse, this should have a value of 5 Amp. If a plug without a fuse is used, the fuse at the distribution board should not be greater than 5 Amp.

Note: The severed plug must be disposed of to avoid a possible shock hazard should it be inserted into a 13 Amp socket elsewhere.

How to connect a plug

The wires in the mains lead are coloured with the following code: blue = neutral (N), brown = live (L).

- As these colours may not correspond with the colour markings identifying the terminals in your plug, proceed as follows:
 - Connect the blue wire to the terminal marked N or coloured black.
 - Connect the brown wire to the terminal marked L or coloured red.
 - Do not connect either wire to the earth terminal in the plug, marked E (or \perp) or coloured green (or green and yellow).

Before replacing the plug cover, make certain that the cord grip is clamped over the sheath of the lead - not simply over the two wires.

Copyright in the U.K.

Recording and playback of material may require consent. See Copyright Act 1956 and The Performer's Protection Acts 1958 to 1972.

Italia

DICHIARAZIONE DI CONFORMITA'

Si dichiara che l'apparecchio MZ1000, MZ1100, MZ1200, Philips risponde alle prescrizioni dell'art. 2 comma 1 del D.M. 28 Agosto 1995 n. 548.

Fatto a Eindhoven

Philips Consumer Electronics
Philips, Glaslaan 2
5616 JB Eindhoven, The Netherlands

Norge

Typeskilt finnes på apparatens underside.

Observer: Nettbryteren er sekundert innkoplet. Den innebygde nettdelen er derfor ikke frakoplet nettet så lenge apparatet er tilsluttet nettkontakten.

For å redusere faren for brann eller elektrisk støt, skal apparatet ikke utsettes for regn eller fuktighet.

CAUTION

Use of controls or adjustments or performance of procedures other than herein may result in hazardous radiation exposure or other unsafe operation.

DK

Advarsel: Usynlig laserstråling ved åbning når sikkerhedsafbrydere er ude af funktion. Undgå udsættelse for stråling.

Bemærk: Netafbryderen er sekundært indkoblet og afbryder ikke strømmen fra nettet. Den indbyggede netdel er derfor tilsluttet til lysnettet så længe netstikket sidder i stikkontakten.

S

Klass 1 laserapparat

Varning! Om apparaten används på annat sätt än i denna bruksanvisning specificerats, kan användaren utsättas för osynlig laserstrålning, som överskrider gränsen för laserklass 1.

Observera! Stömbrytaren är sekundärt kopplad och bryter inte strömmen från nätet. Den inbyggda nät delen är därför ansluten till elnätet så länge stickproppen sitter i vägguttaget.

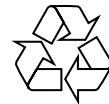
SF

Luokan 1 laserlaite

Varoitus! Laitteen käyttäminen muulla kuin tässä käyttöohjeessa mainitulla tavalla saattaa altistaa käyttäjän turvallisuusluokan 1 ylittävälle näkymättömälle lasersäteilylle.

Oikeus muutoksiin varataan. Laite ei saa olla alttiina tippu- ja roiskevedelle.

Huom. Toiminnanvalitsin on kytketty toisiopuolelle, eikä se kytke laitetta irti sähköverkosta. Sisäänrakennettu verkko-osa on kytkettynä sähköverkkoon aina silloin, kun pistoke on pistorasiassa.



Index

English ----- 6

English

Français ----- 24

Français

Español ----- 42

Español

Deutsch ----- 60

Deutsch

Nederlands ----- 78

Nederlands

Italiano ----- 96

Italiano

Svenska ----- 114

Svenska

Dansk ----- 132

Dansk

Suomi ----- 150

Suomi

Português ----- 168

Português

Ελληνικά ----- 186

Ελληνικά

Polski ----- 204

Polski

Contents

General Information

Environmental information	7
Maintenance	7
Safety information	7

Connections

Supplied accessories	8
Rear connections	8–9

Preparations

Before using the remote control	10
Replacing battery (lithium CR2025) into the remote control	10
Placing the power box	10

Introduction of Features

Radio Reception

Plug and Play	12
First time setup/power up	
Reinstalling Plug and Play	
Switching on to tuner mode	12
Presetting radio stations	13–14
Automatic preset programming	
Manual preset programming	
Listening to the preset radio stations	
Deleting a preset radio station	

CD/MP3-CD Operations

Discs for playback	15
Loading/Unloading the disc	15
Inserting the disc	
Ejecting the disc	
Playing a CD/MP3-CD	16
Selecting a desired MP3 Album/Track	17
Programming the disc tracks	17
MP3-CD programming	

Clock/Timer

About Clock	18
Setting the clock	
About Timer	19
Setting the timer	
Cancel/Disable the timer	
Activating the timer to the last setting	

Other Features

Switching on	20
Switching to Eco Power standby mode	
Switching to standby mode	
Switching to active mode	
Sound control	20
Adjusting the Bass/Treble level	
Activating/deactivating Incredible Surround effect	

Other Connections

Connecting external devices	21
Connecting an external device for listening to music/sound	
Connecting an external device for analogue recording	
Listening to an external source	21

Specifications

Troubleshooting

General Information

This product complies with the radio interference requirements of the European Community.

The type plate is located at the rear of the system.

For users in the U.K.: please follow the instructions on page 2.

Environmental information

All unnecessary packaging has been omitted. We have tried to make the packaging easy to separate into three materials: cardboard (box), polystyrene foam (buffer) and polyethylene (bags, protective foam sheet).

Your system consists of materials which can be recycled and reused if disassembled by a specialised company. Please observe the local regulations regarding the disposal of packaging materials, exhausted batteries and old equipment.

Maintenance

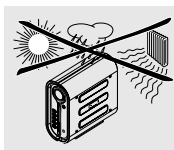
To clean a CD, wipe it in a straight line from the centre toward the edge using a soft, lint-free cloth. A cleaning agent may damage the disc! Write only on the printed side of a disc and only with a soft felt-tipped pen.



Clean the system with a soft, slightly dampened, lint-free cloth. Do not use any cleaning agents as they may have a corrosive effect.



Do not expose the system batteries or discs to humidity, rain, sand or excessive heat (caused by heating equipment or direct sunlight).

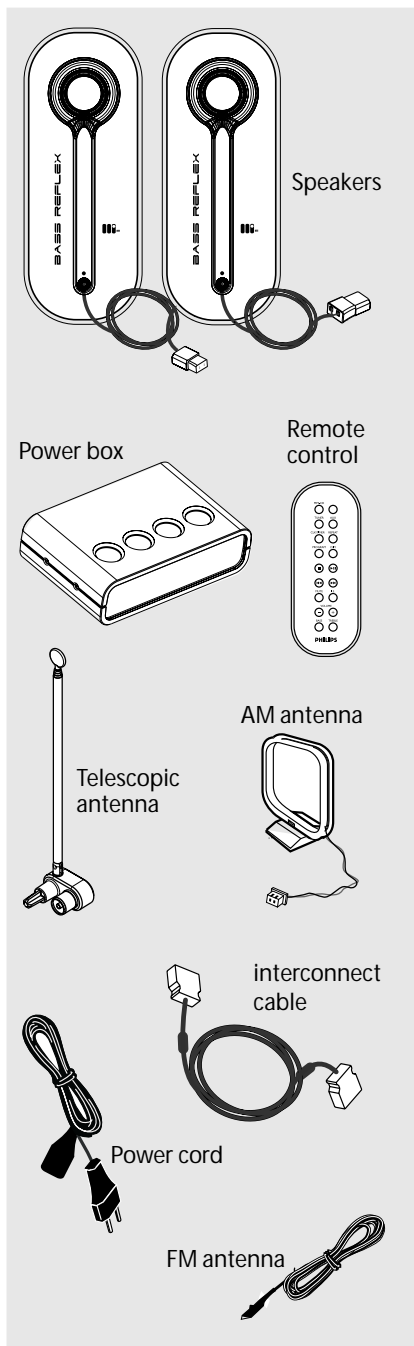


Safety information

- Place the system on a flat, hard and stable surface.
- Place the system in a location with adequate ventilation to prevent internal heat build-up in your system. Allow at least 10 cm (4 inches) clearance from the rear and the top of the unit and 5 cm (2 inches) from each side.
- The lens may cloud over when the system is suddenly moved from cold to warm surroundings, making it impossible to play a disc. Leave the system in the warm environment until the moisture evaporates.
- The mechanical parts of the set contain self-lubricating bearings and must not be oiled or lubricated.
- When the system is switched to Standby mode, it is still consuming some power. To disconnect the system from the power supply completely, remove the AC power plug from the wall socket.
- To avoid overheating of the system, a safety circuit has been built in. Therefore, your system may switch to Standby mode automatically under extreme conditions. If this happens, let the system cool down before reusing it.

Connections

Supplied accessories



Rear connections

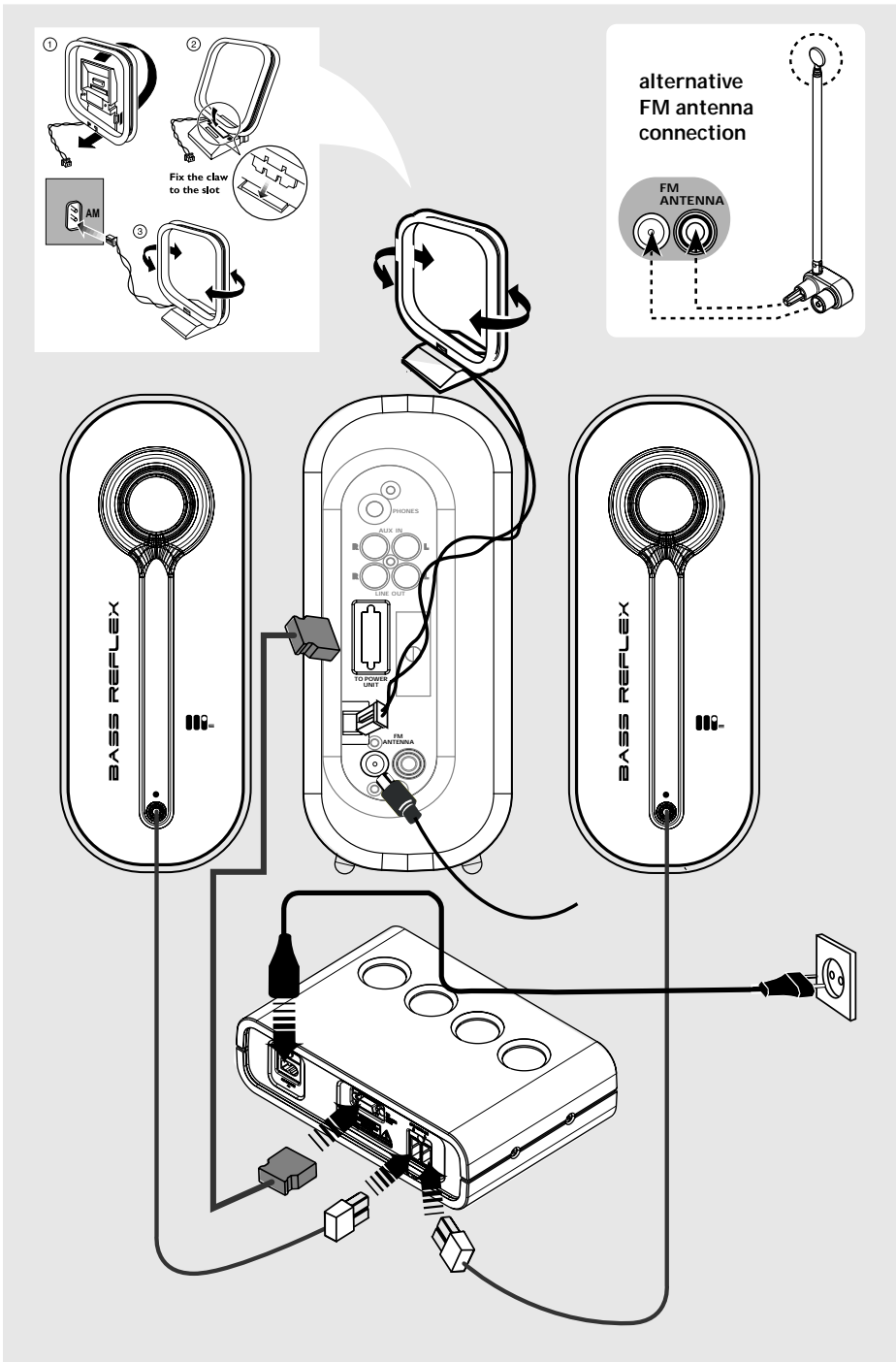
WARNING!

- Never make or change any connections with the power switched on.
- Connect the power cord from the “power box” to the power outlet only after you have finished hooking up everything.

- Adjust the position of the antenna for optimal reception.
- Position the antenna as far as possible from a TV, VCR or other radiation source.
- For better FM stereo reception, connect external FM antenna.
- It is not possible to connect other than the supplied speakers.
- The optional equipments and connecting cords are not supplied.
- If you are connecting to equipment with only mono output (a single audio out terminal), connect it to the AUX IN left terminal. Alternatively, you can use a “single to double” cinch cable, but the output sounds still remain mono.
- Do not connect equipment to both the LINE OUT and AUX IN terminals at the same time. Otherwise, noise will be generated and malfunction might occur.

Connections

English



Preparations

Before using the remote control

- 1 Pull out the plastic protective sheet.
- 2 Select the source you wish to control by pressing one of the source select keys on the remote control (for example MP3-CD, TUNER).
- 3 Then select the desired function (for example ►, ◀◀, ▶▶).

Replacing battery (lithium CR2025) into the remote control

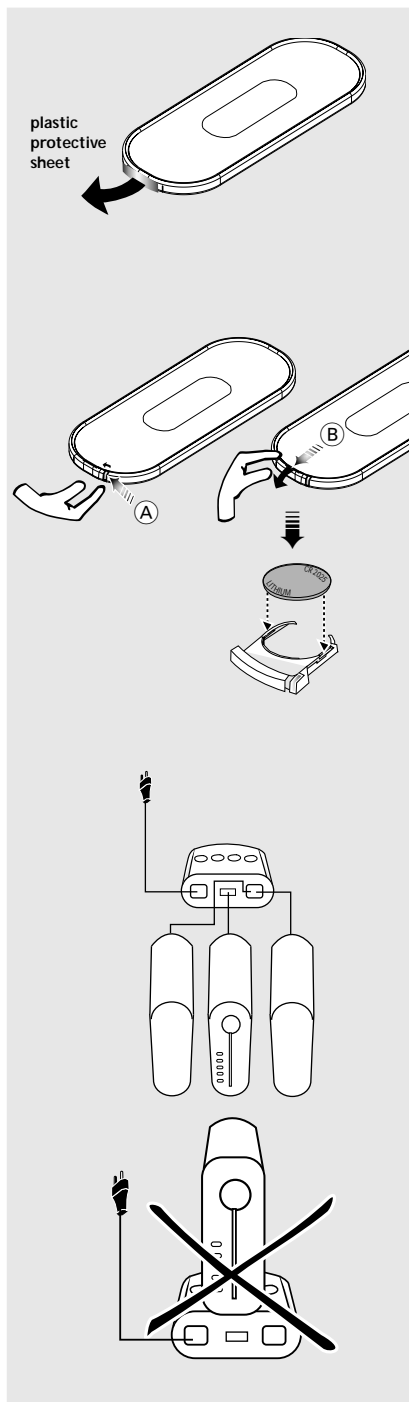
- 1 Pull out the knob ① slightly to the left
- 2 Pull out the battery compartment ②.
- 3 Replace a new battery and fully insert the battery compartment back to the original position.

CAUTION!

Batteries contain chemical substances, so they should be disposed off properly.

Placing the power box

- Place the power box as close as possible to the power supply.
- Do not place this unit in closed spaces, cover it or block the air vents.
- Do not insert or drop anything into this unit through the air vents as this could cause serious damage.



Introduction of Features

English

Eco Power standby

ECO POWER or 

- press and hold to switch the system to low power standby mode.

Standby mode

ECO POWER or 

- press briefly to enter standby mode.

Source selection

SOURCE press repeatedly to select :
CD → TUNER-FM → MW →
AUX → CDR → CD ...

MP3-CD / TUNER / AUX

- press to enter the selected source mode.
- in Tuner mode, press **TUNER** to toggle between FM and MW band.
- in AUX mode, press **AUX** to toggle between AUX and CDR mode.

Dimming the display

DIM press to select half or full brightness for display screen.

Clock/Timer

CLK/TIMER


- press to view clock or enter clock setting mode.
- press and hold to enter timer setting mode.



PROGRAM

- in clock setting mode, press to change clock display mode : 24- or 12- hour.

  press to set the minutes and hours.


Tuner

 press to toggle between frequency tuning and preset number selection mode.

-   press to select a preset radio station.
- press to change the radio frequency.

PROGRAM

- press to start manual preset programming.
- press and hold to start automatic preset programming.

 press to stop programming or to erase a selected preset.

Plug and Play



- in standby mode, press and hold to initiate Plug and Play mode.
- press briefly to start plug & play installation.
- press to exit.

Volume

VOL ▲▼, VOLUME +/—

- press to increase/decrease the volume.

MUTE

- press to silence or restore the volume.

Sound control

I.S.

press to switch on/off the incredible surround sound effect.

BASS / TREBLE

- press to select low tone/high tone sound effect.
- press **VOLUME +/—** on the remote control to change the tone level.

CD



press to start or interrupt playback.

- press briefly to select a desired track.
- press and hold to search backward/forward.



- in playback mode, press to stop the disc.
- in stop mode, press to eject the disc.

REPEAT

press to select repeat the current track or repeat the whole disc or switch off the repeat mode.

MP3-CD



- press to start or interrupt playback.
- press to enter track selection mode.

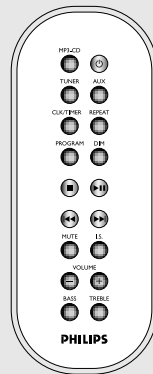
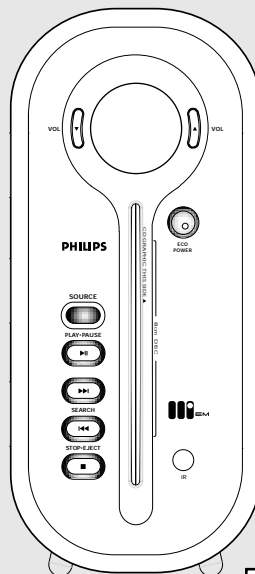
press to select a desired album/ track.



- in playback mode, press to stop the disc.
- in stop mode, press to eject the disc.
- press to enter album selection mode.

REPEAT

press to select repeat the current track or repeat the whole disc or switch off the repeat mode.



Radio Reception

Plug and Play

Plug and Play allows you to store all available radio stations automatically, starting from FM and followed by MW band.

When all the available radio stations are stored or the memory for 40 presets are used, the last preset radio station will be played.

⇒ First time setup/power up



⇒ Reinstalling Plug and Play



→ All previously stored radio stations will be replaced.

Notes:

- If no stereo frequency is detected during Plug and Play, "CHECK ANTENNA" will be displayed.
- During Plug and Play, if no button is pressed within 15 seconds, the system will exit Plug and Play mode.

In standby mode,



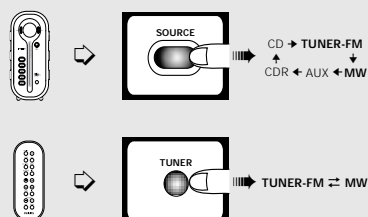
To exit without storing the Plug and Play

- Press **■** on the system.
 - If you do not complete the Plug and Play installation, the function will be restarted when you next turn on the main supply again.

Switching on to tuner mode



- Press **SOURCE** or **TUNER** repeatedly to select FM or MW band.



Radio Reception

English

Presetting radio stations

You can preset up to 40 radio stations in the memory.

IMPORTANT!

When "P" appears on the display, it only enables preset number selection.

Press ►|| to toggle between frequency tuning and preset number selection.

➔ Automatic preset programming

It enables you to programme all available radio stations automatically from a selected preset number, starting from FM and followed by MW band.

If no preset number is shown, automatic preset will begin from preset (1) and all your former presets will be overridden.

Note:

– If a radio station has been stored in one of the presets, it will not be stored again under another preset number.

To exit programming mode

- Press **PROGRAM** or ■.

➔ Manual preset programming

It enables you to programme only the favourite radio stations.

- Hold down ◀◀ ▶▶ for fast tuning, release it when the frequency indication starts to change. For tuning to a weak reception radio station, press ◀◀ ▶▶ briefly and repeatedly.
- Repeat the steps again to store other radio stations.

Notes:

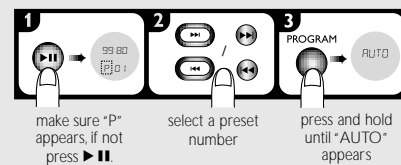
– If you attempt to programme more than 40 preset radio stations, "PROGRAM FULL" is displayed.

– During programming, if no key is pressed within 20 seconds, the system will exit the programme mode automatically.

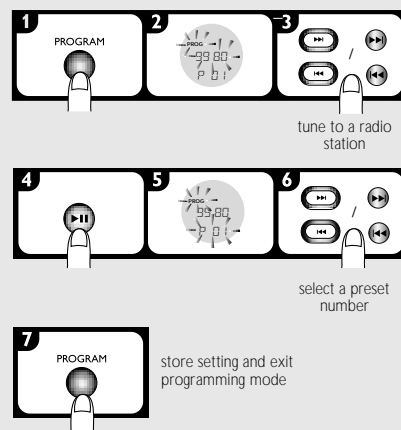
To exit without storing the preset setting

- Press ■.

In tuner mode,



In tuner mode,

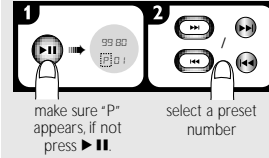


Radio Reception

⇒ Listening to the preset radio stations



In tuner mode,



⇒ Deleting a preset radio station



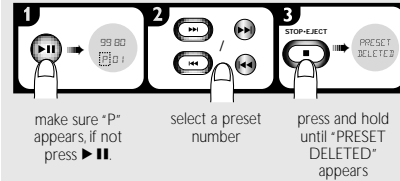
When the preset radio station is deleted

- The deleted radio frequency remains on the display until you select another preset number.
- The preset numbers of all other preset radio stations in the band with higher numbers are also decreased by one.

Note:

- If you press the **STOP•EJECT** (■) button for less than three seconds, it will eject the disc (if available) from the disc loader.

In tuner mode,



CD/MP3-CD Operations

English

Discs for playback

This system is able to play :

- All pre-recorded audio CDs (8cm/12cm)
- All finalised audio CDR and audio CDRW discs
- MP3-CDs (CD-ROMs with MP3 tracks)
 - maximum albums = 99
 - maximum titles = 999 (depending on filename length)
 - ISO9660/Joliet or UDF1.5 format
 - Bitrates = 32-256 kpbs, variable bitrates
 - ID3 tags = V1.1, V2.2, V2.3, V2.4

Loading/Unloading the disc

WARNING!

- Do not load more than one disc into the disc loader.
- When loading an 8cm disc, slot into the middle of the disc loader.

⇒ Inserting the disc

Slot the disc slightly into the disc loader and withdraw your fingers immediately.

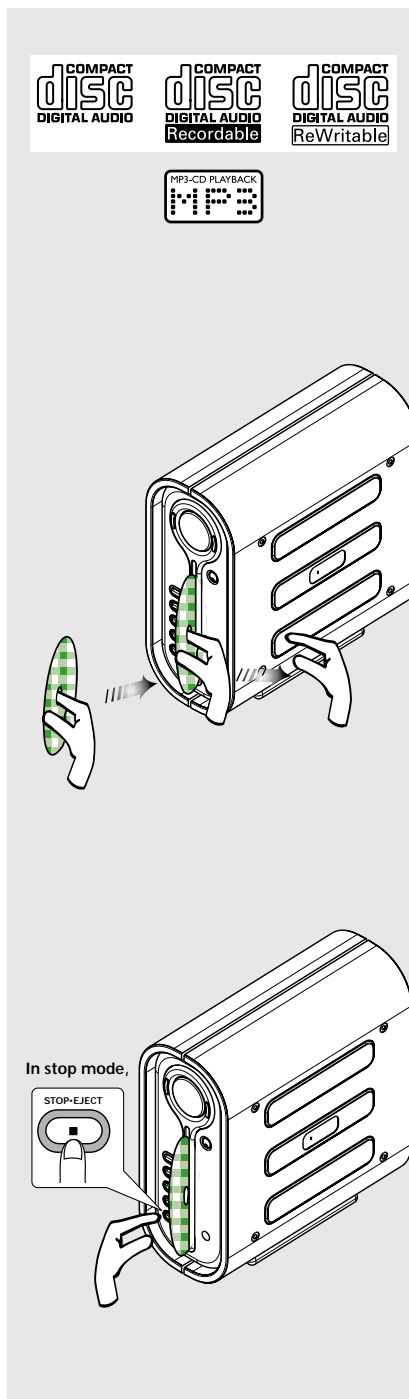
→ "READY" is displayed, followed by total number of tracks and the playing time.

Notes:

- Load the disc with the label side facing right.
- Loading the disc in any source mode will switch from the current mode to disc mode.
- For MP3 disc, the disc reading time may exceed 10 seconds due to the large number of songs compiled into one disc.

⇒ Ejecting the disc

→ All the programmed tracks will be erased.



CD/MP3-CD Operations

Playing a CD/MP3-CD

You can also access the functions via the same buttons on the remote control.

Switching on to disc mode

- Press **SOURCE** (or **MP3-CD** on the remote control) to select CD mode.

Start / Interrupt / Resume playback

- In stop mode, press to start playback.
- During playback, press to pause.
- In pause mode, press to resume playback.
 - During playback, the track number and elapsed playing time of the current track are displayed.
 - For mixed mode MP3 discs, only one mode will be selected for playback depending on the recording format.

Searching backward/forward

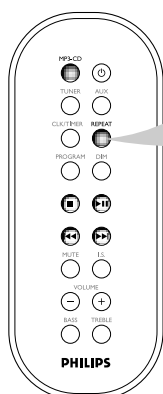
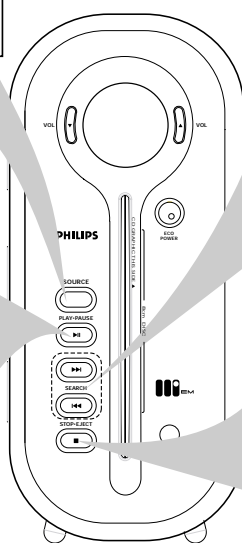
- **During playback**, hold down the button until it reaches the desired passage.
 - For MP3 disc, it is only possible to search within the current track.

Selecting a desired track

- Press the button briefly and repeatedly to go to the beginning of the current / next/ previous track.
- **In stop/programme mode**, hold down the button to increase the speed of track selection.

Stop playback / Eject the disc

- During playback, press to stop playback.
- In stop mode, press to eject the disc.



Repeat play

- Press **REPEAT** repeatedly to select :
 - Repeat the current track – **RPT** lights up.
 - Repeat all tracks – **RPT ALL** lights up.

To stop repeat play

- Press **REPEAT** repeatedly until **RPT ALL** disappears from the display.

Notes:

- If programme mode is active, it will repeat the programmed tracks.
- When the disc is being ejected from the disc slot, it will cancel the repeat mode.

CD/MP3-CD Operations

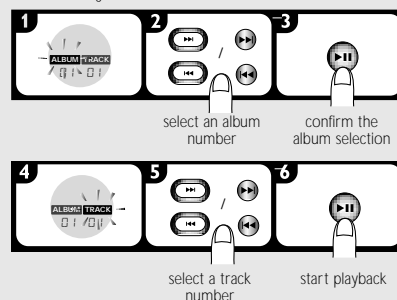
English

Selecting a desired MP3 Album/Track

If you want to change the album after confirming the selection

- 1 Press while **TRACK** icon is flashing.
- 2 Press to select the desired album and repeat steps 3-6.

After inserting the MP3 disc,



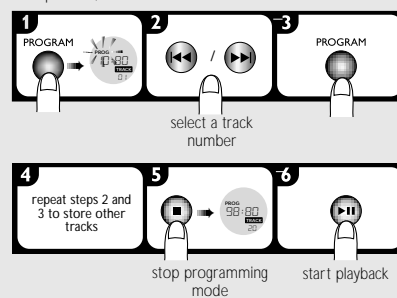
Programming the disc tracks

Programming tracks is possible when playback is stopped. Up to 99 tracks can be stored in the memory in any order.

If you attempt to programme more than 99 tracks, "PROGRAM FULL" will appear on the display. In this case :

- The system will exit programming mode automatically.
- Pressing button will erase all the programmed tracks.
- Pressing button will start the playback of the programmed tracks.

In stop mode,



MP3-CD programming

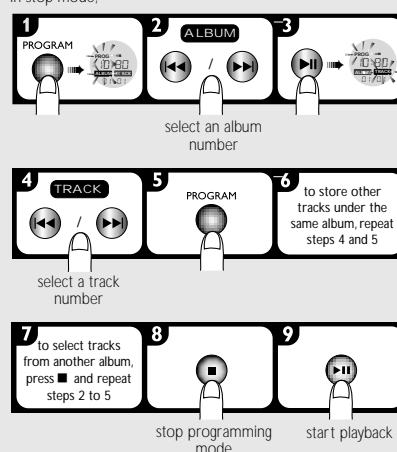
Notes:

- During programming, if no button is pressed within 20 seconds, the system will exit the programme mode automatically.
- The programme will be erased when the system exits from CD source.

To erase all the programmed tracks

- In stop mode, press .
- Once the programmed tracks have been erased, pressing will eject the disc.

In stop mode,



Clock/Timer

IMPORTANT!

When in Eco Power standby mode, it is not possible to view or set the clock/timer.

Notes:

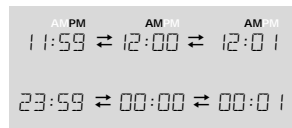
- The clock/timer setting will be cancelled when the power cord is disconnected or if a power failure occurs.
- During clock/timer setting, if no button is pressed within 90 seconds, the system will exit the setting mode automatically.

About Clock

The clock can be set in either 12-hour or 24-hour mode ("11:59 **PM**" or "23:59", for example).

⇒ Setting the clock

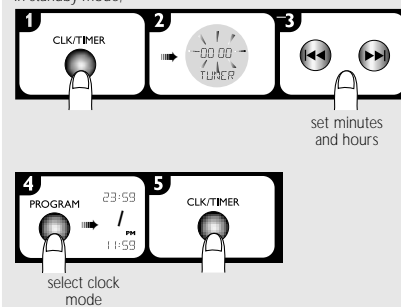
If you press and hold **⏮ ⏭** for more than two seconds, it will change the minutes in faster speed. The changes in minutes will rollover to the hours, refer to the example shown below.



- Press **CLK/TIMER** once.
- Press **■**.



In standby mode,



Clock/Timer

English

About Timer

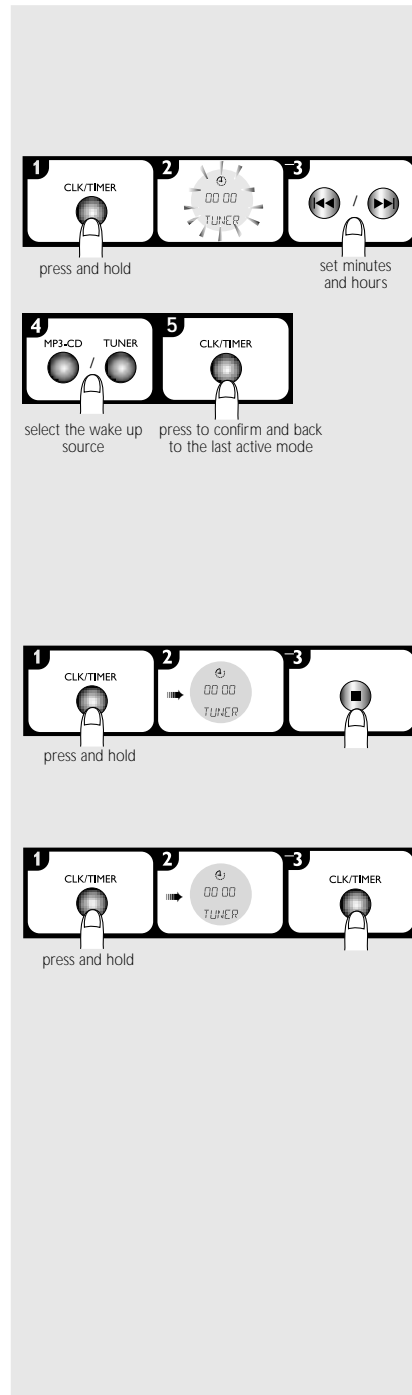
The system can switch to CD or TUNER mode automatically at a preset time, serving as an alarm to wake you up.

⇒ Setting the timer

- Before setting the timer, ensure that the clock is set correctly.
- The timer will always be switched on after it has been set.
- The volume of the timer will increase gradually from the minimum level to the last tuned volume level.
- If the CD source is selected, the timer will wake you up by playing the first track of the disc or programmed track. If the disc loader is empty, it will switch to Tuner mode.
- If the Tuner source is selected, the timer will wake you up by playing the last tuned radio station.

⇒ Cancel/Disable the timer

⇒ Activating the timer to the last setting



Other Features

Switching on

⇒ Switching to Eco Power standby mode

To save the power consumption, it is advisable to switch the system to Eco Power standby mode or disconnect the system from the power supply completely when not in use.

→ LED will display a red light.

→ The display screen will go blank.

⇒ Switching to standby mode

→ LED will display a green light.

⇒ Switching to active mode

Sound control

⇒ Adjusting the Bass/Treble level

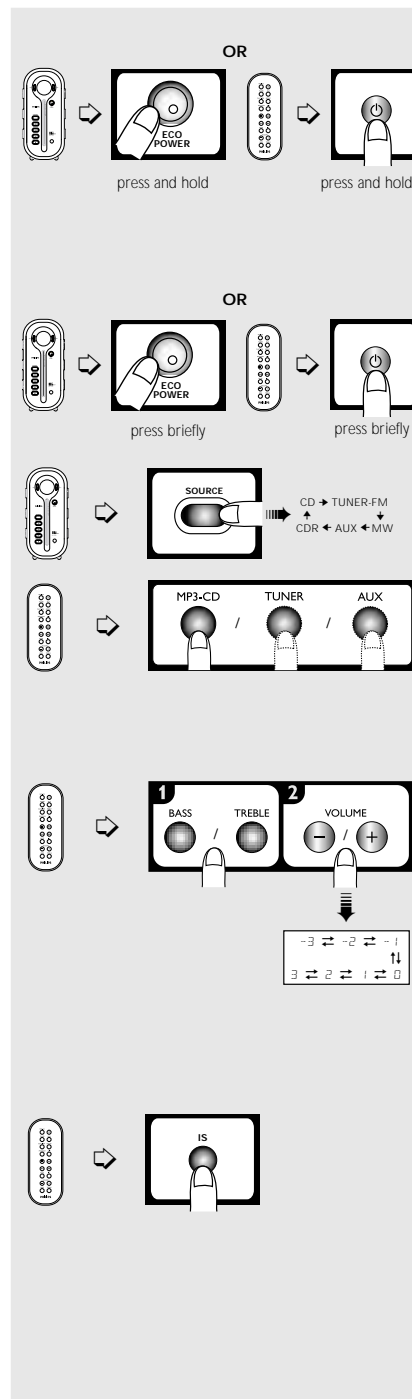
The BASS (low tone) and TREBLE (high tone) feature enables you to define the sound-processor settings.

To adjust the Bass or Treble tone level, press the volume buttons on the remote control immediately after you have selected the Bass or Treble sound feature. If the volume button is not used within five seconds, it will resume its normal volume control function.

⇒ Activating/deactivating Incredible Surround effect

The Incredible Surround magnifies the virtual distance between the front speakers for an incredibly wide, enveloping, stereo effect.

→ If the Incredible Surround is activated, **is** is shown on the display.



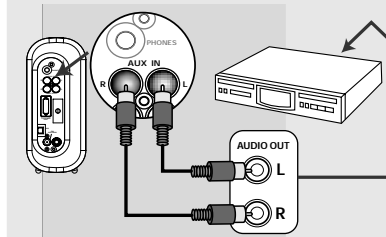
Other Connections

English

Connecting external devices

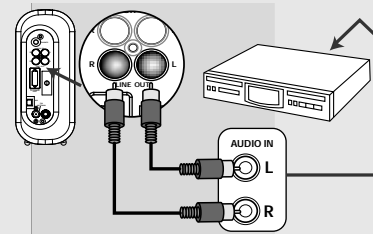
→ Connecting an external device for listening to music/sound

Connect the "AUDIO OUT" terminals of the external device (TV, VCR, Laser Disc player, DVD player, for example) to the **AUX IN** terminals of your system.



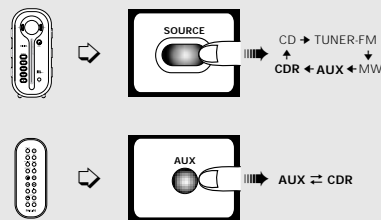
→ Connecting an external device for analogue recording

Connect the "AUDIO IN" terminals of the external device (CD/tape recorder, for example) to the **LINE OUT** terminals of your system.



Listening to an external source

- 1 Press **SOURCE** or **AUX** repeatedly.
 - Select "AUX" when connecting to a TV, VCR or Laser Disc player.
 - Select "CDR" when connecting to a CD recorder or DVD player.
- 2 Play the external device.
- When CDR mode is selected, any audio equipment connected to the LINE OUT terminals will be muted. You will not be able to record or listen to the sound on equipment connected to the LINE OUT terminals.



Notes:

- You are advised not to listen to and record from the same source simultaneously.
- All the sound control features (IS., BASS/TREBLE, for example) are available for selection.
- Refer to the operating instructions of the connected equipment for details.

Specifications

AMPLIFIER

Output power	2 x 50 W MPO
.....	2 x 25 W RMS ⁽¹⁾
Signal-to-noise ratio	≥ 67 dBA (IEC)
Frequency response	50 – 16000 Hz
Input sensitivity	
AUX / CDR In	500 mV / 1V
Output	
Speakers	≥ 8 Ω
Headphones	32 Ω – 1000 Ω
Line Out	500 mV ±2dB, > 22000 Ω

(1) (8 Ω, 1 kHz, 10% THD)

CD/MP3-CD PLAYER

Number of programmable tracks	99
Frequency range	20 – 20000 Hz
Signal-to-noise ratio	≥ 80 dBA
Channel separation	≥ 60 dB (1 kHz)
Total harmonic distortion	< 0.003%
MPEG 1 Layer 3 (MP3-CD)	MPEG AUDIO
MP3-CD bit rate	32-256 kbps
.....	(128 kbps advised)
Sampling frequencies	32, 44.1, 48 kHz

TUNER

FM wave range	87.5 – 108 MHz
MW wave range	531 – 1602 kHz
Number of presets	40
Antenna	
FM	75 Ω wire /telescopic antenna
AM	Loop antenna

POWER UNIT

Material	Polystyrene
AC Power	220 – 230 V / 50 Hz
Power Consumption	
Active	33 W
Standby	< 10 W
Eco Power Standby	≤ 1 W
Dimensions (w x h x d) ...	238 x 68 x 158 (mm)
Weight (without speakers)	1.2 kg

SPEAKERS

System	Bass reflex
Impedance	8 Ω
Woofer	2 x 3" polypropylene
Tweeter	1 x 18mm Ferrofluid cooled Dome
Dimensions (w x h x d) .	112 x 245 x 235 (mm)
Weight	2.9 kg each

GENERAL INFORMATION

Material	
MZ1000	Polymethyl methacrylate
MZ1100	Rubber/Lucite
MZ1200	Aluminium alloy
Main unit	
Dimensions (w x h x d)	112 x 245 x 235 (mm)
Weight	2.85 kg

Specifications and external appearance are subject to change without notice.

Troubleshooting

English

WARNING

Under no circumstances should you try to repair the system yourself, as this will invalidate the warranty. Do not open the system as there is a risk of electric shock.

If a fault occurs, first check the points listed below before taking the system for repair. If you are unable to solve a problem by following these hints, consult your dealer or service centre.

Problem	Solution
The disc is ejected automatically.	<ul style="list-style-type: none"> ✓ Load in the disc with label facing right. ✓ Replace or clean the disc, see "Maintenance". ✓ Use a finalised CD-RW or a correct MP3-CD format disc.
Radio reception is poor.	<ul style="list-style-type: none"> ✓ If the signal is too weak, adjust the antenna or connect an external antenna for better reception. ✓ Increase the distance between the system and your TV or VCR.
The system does not react when buttons are pressed.	<ul style="list-style-type: none"> ✓ Remove and reconnect the AC power plug and switch on the system again.
Sound cannot be heard or is of poor quality.	<ul style="list-style-type: none"> ✓ Adjust the volume. ✓ Disconnect the headphones. ✓ Check that the speakers are connected correctly. ✓ Make sure the MP3-CD was recorded within 32-256 kbps bit rate with sampling frequencies at 48 kHz, 44.1 kHz or 32 kHz.
The left and right sound outputs are reversed.	<ul style="list-style-type: none"> ✓ Check the speaker connections and location.
The remote control does not function properly.	<ul style="list-style-type: none"> ✓ Select the source (MP3-CD or TUNER, for example) before pressing the function button (▶, ◀, ◀◀, ▶▶). ✓ Reduce the distance between the remote control and the system. ✓ Replace the battery. ✓ Point the remote control directly toward the IR sensor.
The timer is not working.	<ul style="list-style-type: none"> ✓ Set the clock correctly. ✓ Press and hold CLK/TIMER to switch on the timer.