

# IMPORTANT SAFETY INSTRUCTIONS

When using an electric appliance, basic safety precautions should always be followed, including the following:

**Read all instructions before using this appliance.**

## DANGER

**To reduce the risk of electric shock:**

1. Do not reach for a corded appliance that has fallen into water. Unplug immediately.
2. Power plug is not for immersion or for use in shower.
3. Do not use an extension cord with this appliance.
4. Do not place or store an appliance while plugged in where it can fall or be pulled into a tub or sink. Do not place or drop an appliance into water or other liquid while plugged in.
5. Always unplug this appliance from the electrical outlet immediately after (re)charging.
6. Unplug and remove power supply cord from appliance before cleaning.
7. The batteries used in this device may present a fire or chemical burn hazard if mistreated. Do not disassemble, heat above 100°C (212°F) or incinerate.

## WARNING

**To reduce the risk of burns, fire, electric shock, or injury to persons:**

1. Close supervision is necessary when this appliance is used by, on, or near children or invalids.
2. Use this appliance for its intended household use as described in this manual. Do not use attachments not recommended by Philips Electronics North America Corporation.
3. Never operate this appliance if it has a damaged cord or power plug, if it is not working properly, if it has been dropped or damaged, or dropped into water while plugged in. For assistance visit [www.philips.com/norelco](http://www.philips.com/norelco) or call 1-800-243-3050.
4. Keep the appliance, cord and power plug away from heated surfaces.
5. Never drop or insert any object into any opening.
6. Do not use the adapter in or near a power outlet that contains an electric air freshener to prevent damage to the adapter.
7. Do not clean, charge or plug in appliance outdoors or operate where aerosol (spray) products are being used or where oxygen is being administered.
8. Do not use this appliance with a damaged or broken blade or comb, as facial injury may occur.
9. Always attach plug to appliance first, then to outlet. To disconnect, turn appliance off then remove power plug from outlet.
10. Never put the appliance in direct sunlight or store at a temperature above 140°F (60°C).
11. To prevent possible damage to the cord, do not wrap cord around the appliance.
12. Keep the cord dry at all times. Do not handle with wet hands.
13. Only use the power plug supplied with the appliance.

# SAVE THESE INSTRUCTIONS

## Introduction

Congratulations on your purchase and welcome to Philips Norelco!

To fully benefit from the support that Philips Norelco offers, register your product at [www.norelco.com/register](http://www.norelco.com/register)

## IMPORTANT INFORMATION

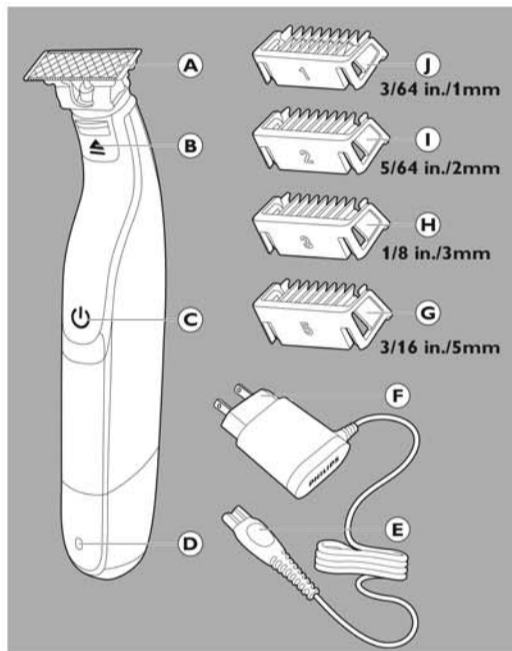
### CAUTION

- ▶ The power plug contains a transformer. Do not cut off the power plug to replace it with another plug, as this will cause a hazardous condition.
- ▶ Always check blade and comb(s) before using. Do not use if the blade or comb(s) are damaged, as facial injury may occur. The blade is fragile so always handle with care.
- ▶ Never use water hotter than 176°F (80°C) to rinse the appliance.
- ▶ Only use the power cord provided to charge shaver.
- ▶ An adaptor plug may be necessary for charging in some foreign countries. Use an attachment plug adaptor of the proper configuration for the power outlet.
- ▶ The power plug transforms 100-240V AC to less than 24V DC.

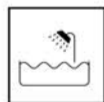
### GENERAL

- ▶ This appliance is only intended to trim, style or shave facial hair (beard, moustache and sideburns).
- ▶ Do not use for shaving, styling or trimming lower body parts or scalp hair.
- ▶ The appliance will not operate while power cord is connected to an electrical outlet.
- ▶ For hygienic reasons, it is recommended that the blade be used by only one person.
- ▶ Do not leave the appliance charging for more than 24 hours.
- ▶ Clean the appliance after each use.
- ▶ Always unplug appliance before cleaning.
- ▶ Do not use compressed air, abrasive cleaning agents, scourers or aggressive liquids such as alcohol, gasoline or acetone to clean the appliance and attachments.

## Features

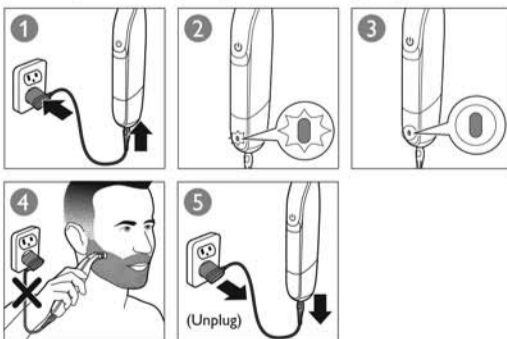


- A Blade
- B Blade Release Slide
- C On/Off Button
- D Battery Charge Indicator
- E Small Plug
- F Adapter
- G Stubble Comb (3/16 in./5mm)
- H Stubble Comb (1/8 in./3mm)
- I Stubble Comb (5/64 in./2mm)
- J Stubble Comb (3/64 in./1mm)



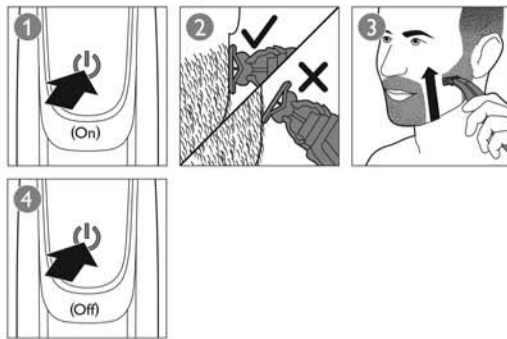
This symbol indicates that the blade can be used in the bath or shower.

## Charging/Recharging



- ▶ Charge the appliance before first use and when the battery status indicator blinks orange.
- ▶ Charging or recharging requires approximately 4 hours.
- ▶ The battery charge indicator will blink green during charging. When fully charged, the battery status indicator lights up green continuously.
- ▶ The battery status indicator will go out approximately 30 minutes after the battery is fully charged or after disconnecting from the electrical outlet.
- ▶ A fully charged appliance has a cordless operating time of up to 60 minutes.

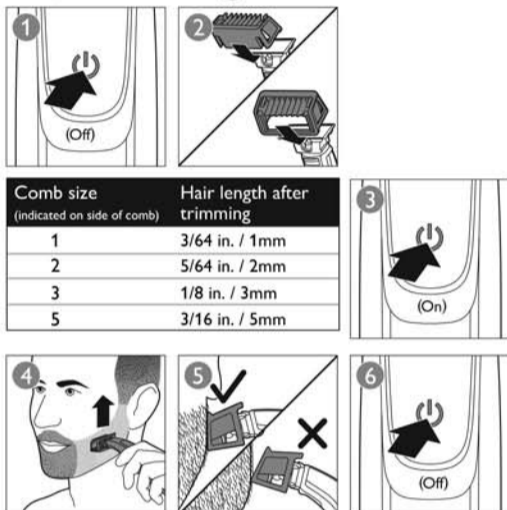
## Shaving



- ▶ Use this appliance for its intended household use as described in this manual.
- ▶ Shaving with a clean beard and face gives the best results.
- ▶ Use the blade dry or wet with gel or foam, even in the shower.
- ▶ Make sure to hold the surface of the blade flat against your skin.
- ▶ For best results, move the blade against the grain. Make long strokes while pressing lightly.

*Tip: For optimum results, always move the appliance against the grain. Take your time and practice to give your skin time to adjust to the blade.*

## Trimming with a Comb

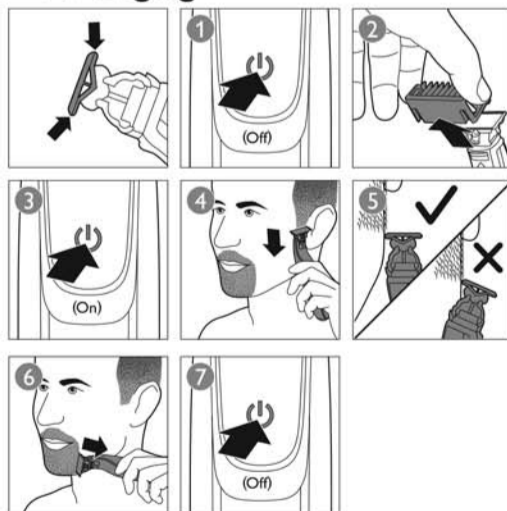


Comb size (indicated on side of comb)	Hair length after trimming
1	3/64 in. / 1mm
2	5/64 in. / 2mm
3	1/8 in. / 3mm
5	3/16 in. / 5mm

- ▶ Place the comb on the blade. The teeth of the comb can point upwards or downwards.
- ▶ If you are trimming for the first time, start by using the 3/16 in./5mm comb to prevent accidentally trimming hairs too short.
- ▶ Always trim in the direction of the teeth of the comb making sure the flat part of the comb is in full contact with the skin.
- ▶ Do not move the appliance too fast. Make smooth and gentle movements.
- ▶ Since all hairs do not grow in the same direction, you may want to try different trimming positions (i.e. upwards, downwards or across). Practice is best for optimum results.

*Tip: Trimming is easier when your skin and hair are dry. For best results, move the appliance against the grain.*

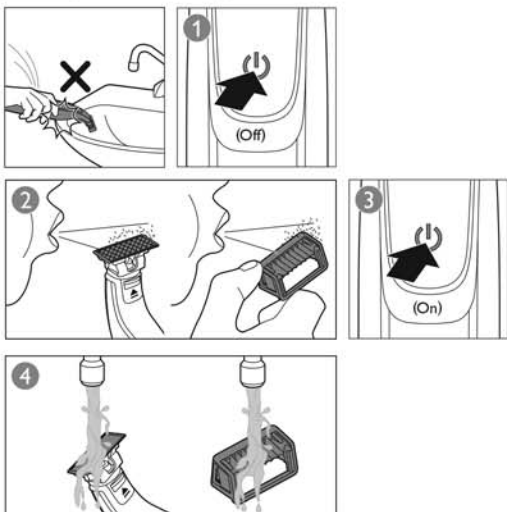
## Edging



- ▶ Use the appliance without a comb for more precise detailing of sideburns and the area around the mouth and nose.
- ▶ Both edges of the blade can be used to create sharp lines and perfect edges.
- ▶ Hold the appliance so that the blade is perpendicular to the skin and only one of its edges touches the skin.
- ▶ Make straight strokes while applying gentle pressure.



## Cleaning: After each use

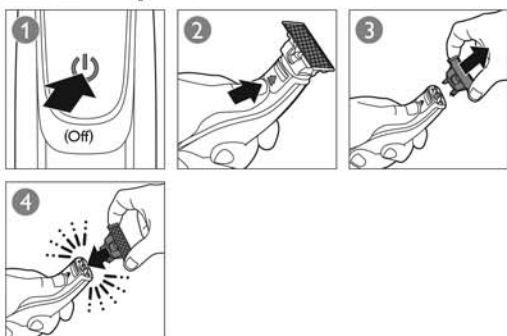


Note: The blade is fragile. Handle with care. Do not tap the blade or appliance on a surface to remove hairs, as this may cause damage to the blade. If blade is damaged, replace immediately.

- Always turn the appliance off before putting on or taking off combs.
- If a lot of hairs have accumulated on the blade and comb, simply blow them off.
- Turn the appliance ON and rinse the blade and comb(s) with lukewarm water. Always check to make sure the water is not too hot.
- Allow the appliance and comb(s) to air dry. Do not use a towel or tissue to dry the blade.



## Replacement



- For optimal cutting and gliding performance, replace the blade every 4 months or when it no longer provides the shaving or trimming results you expect. This advice is based on two full shaves a week and actual results may vary.
- Carefully push the blade release slide up and hold the blade on the sides to prevent the blade from falling.
- Hold the new blade on the sides and press onto the handle (click).

Note: Make sure you hear a 'click' when attaching the new blade.

This appliance has no other user-serviceable parts. For assistance call 1-800-243-3050.



## Storage

- Be sure appliance is turned off. Remove cord from outlet and appliance before storing in a safe, dry location where it will not be crushed, banged or subject to damage.
- Always put a comb on the appliance to protect the blade when storing or traveling.



## Accessories (sold separately)

- Replacement Blade 1-Pack, model QP210
- Replacement Blade 2-Pack, model QP220
- Philips Norelco Accessories may be purchased at a store near you or on our website: [www.philips.com/store](http://www.philips.com/store)



## Disposal

- This Philips Norelco appliance contains a rechargeable Lithium-Ion battery which must be disposed of properly.
- Contact your local town or city officials for battery disposal information or call 1-800-8-BATTERY or [www.rbrc.com](http://www.rbrc.com) for battery drop-off locations.
- For assistance, visit our website, [www.philips.com/support](http://www.philips.com/support) or call toll free 1-800-243-3050.

PHILIPS

NORELCO

OneBlade



QP2530  
Rechargeable Cordless

## Always here to help you

Register your product and get support at [www.norelco.com/register](http://www.norelco.com/register)



## Assistance

4222 002 8593 2

For assistance visit our website [www.philips.com/support](http://www.philips.com/support) or call toll free: 1-800-243-7884



45 DAY  
MONEY BACK  
GUARANTEE

## 45-Day Money-Back Guarantee

If you are not fully satisfied with your Philips Norelco OneBlade, send the product back along with dated sales receipt, and we'll refund you the full purchase price. **The product must be shipped prepaid by insured mail, insurance prepaid, have the original sales receipt, indicating purchase price, the date of purchase, and the money-back guarantee return authorization form enclosed. We cannot be responsible for lost mail.** The product must be postmarked no later than 45 days from the date of purchase. Philips Norelco reserves the right to verify the purchase price of the product and limit refunds not to exceed suggested retail price.

**To obtain money-back guarantee return authorization form, call 1-800-243-3050 for assistance. Delivery of refund check will occur 6-8 weeks AFTER receipt of refund product.**

FULL 2 YEAR  
WARRANTY

## Full Two-Year Warranty

Philips Electronics North America Corporation warrants each new Philips Norelco product, Model QP2530 (except blade and combs) against defects in materials or workmanship for a period of two years from the date of purchase, and agrees to repair or replace any defective product without charge.

**IMPORTANT:** This warranty does not cover damage resulting from accident, misuse or abuse, lack of reasonable care, the affixing of any attachment not provided with the product or loss of parts or subjecting the product to any but the specified voltage.\*

**NO RESPONSIBILITY IS ASSUMED FOR ANY SPECIAL, INCIDENTAL OR CONSEQUENTIAL DAMAGES.**

In order to obtain warranty service, simply go to [www.philips.com/norelco](http://www.philips.com/norelco) or call 1-800-243-3050 for assistance. It is suggested that for your protection you return shipments of product by insured mail, insurance prepaid. Damage occurring during shipment is not covered by this warranty. **NOTE:** No other warranty, written or oral, is authorized by Philips Electronics North America Corporation. This warranty gives you specific legal rights, and you may also have other rights which vary from state to state. Some states do not allow the exclusion or limitation of incidental or consequential damages, so the above exclusion and limitations may not apply to you. \*Read enclosed instructions carefully.

Manufactured for:  
Philips Consumer Lifestyle  
A Division of Philips Electronics North America Corporation  
P.O. Box 10313, Stamford, CT 06904



This symbol on the product's nameplate means it is listed by Underwriters Laboratories, Inc.

Norelco is a Registered Trademark of Philips Electronics North America Corporation.

PHILIPS is a Registered Trademark of Koninklijke Philips N.V.

© 2015 Philips Electronics North America Corporation. All Rights Reserved.