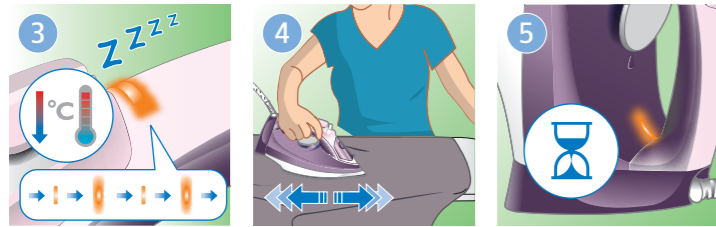
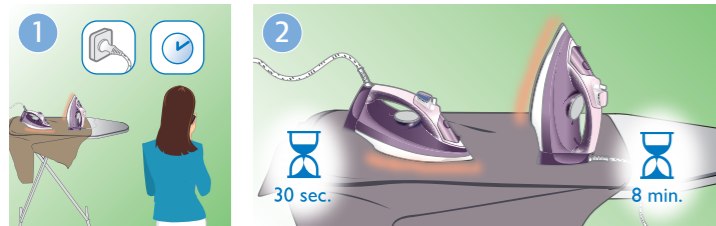


3

Auto Shut Off

www.philips.com/support

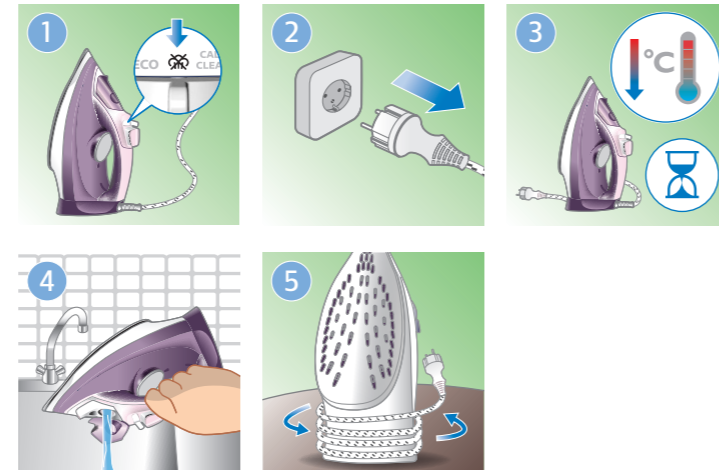


EN Specific types only
 FR Certains modèles uniquement
 PT Apenas tipos específicos
 FA فقط مدل های خاص
 AR أنواع محددة فقط

4



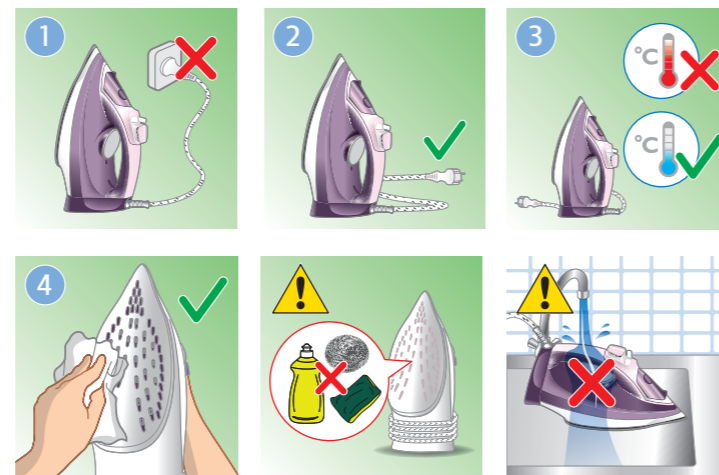
www.philips.com/support



5



www.philips.com/support

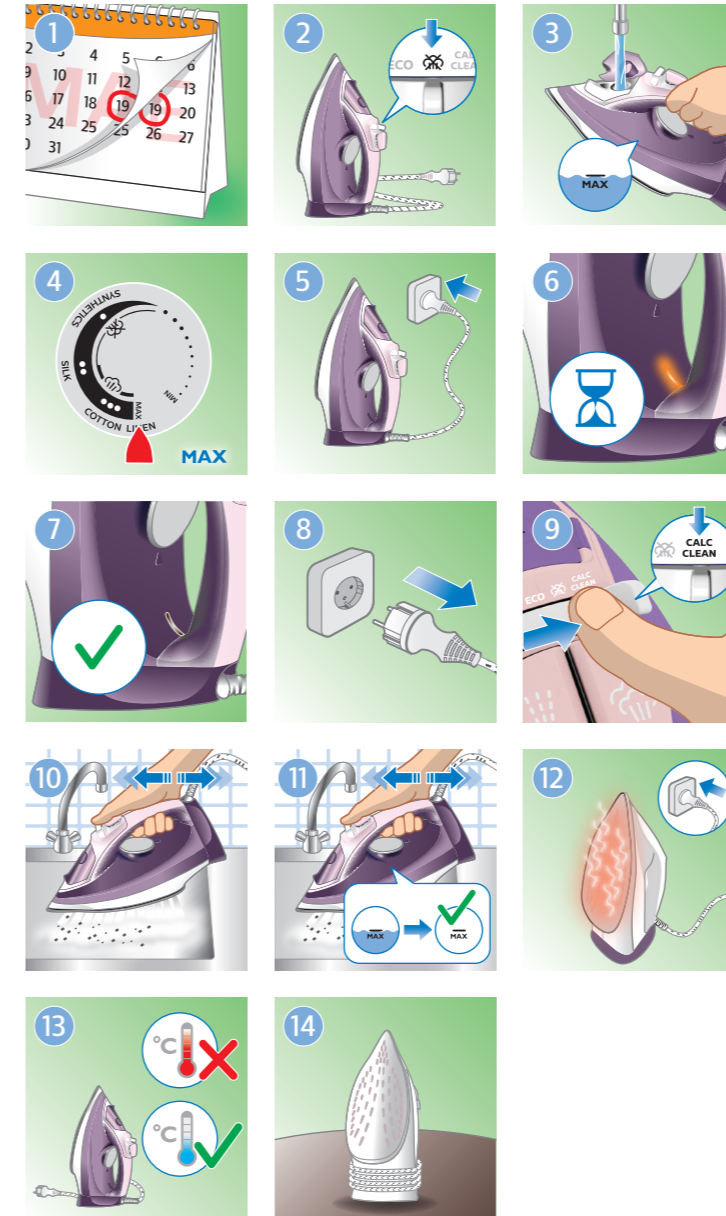


6

CALC CLEAN



www.philips.com/support



PHILIPS

DST5010, DST5020
 DST5040



EN User manual

FR Mode d'emploi

PT Manual do utilizador

AR دليل المستخدم

FA راهنمای کاربر

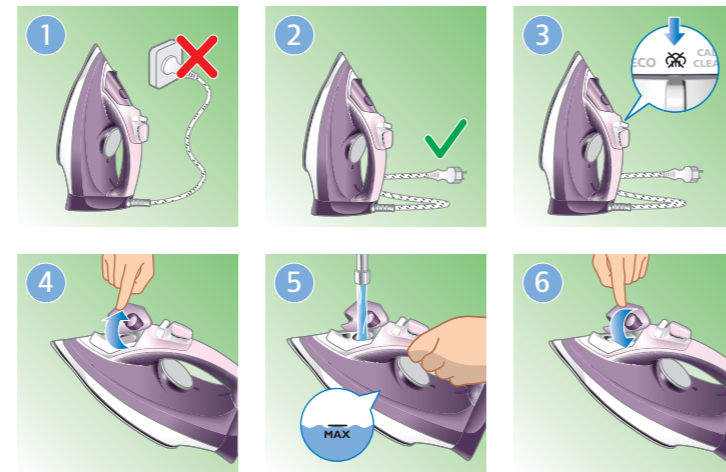


PHILIPS and the Philips Shield Emblem are registered trademarks of Koninklijke Philips N.V. and are used under license. This product has been manufactured by and is sold under the responsibility of Versuni Holding B.V., and Versuni Holding B.V. is the warrantor in relation to this product. 2023 © Versuni Holding B.V. 4239.001.2005.3 (17/01/2023)





1



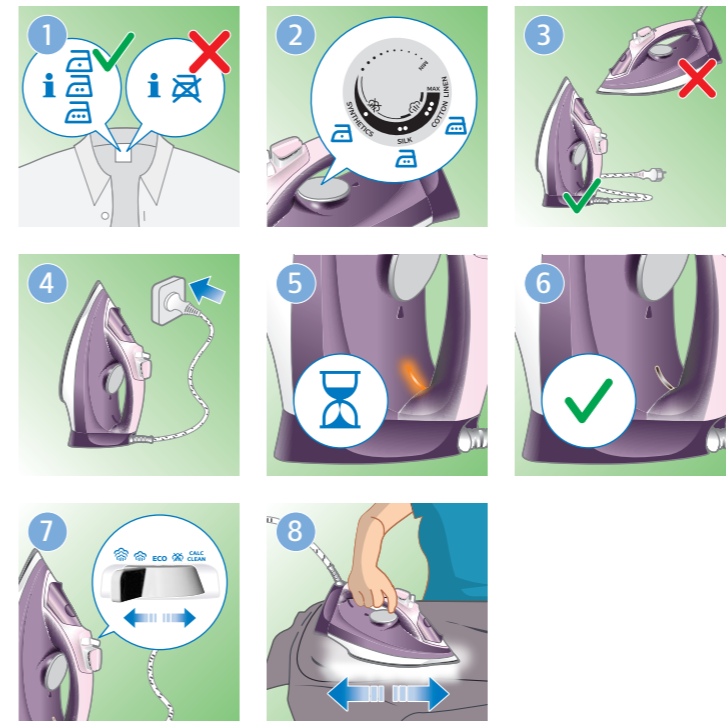
2



	MAX LINEN COTTON SILK SYNTHETICS	ECO CALC CLEAN
MAX LINEN	MAX LINEN	ECO
COTTON	COTTON	ECO
SILK	SILK	ECO
SYNTHETICS	SYNTHETICS	ECO



2



EN Preparing for use

Smoke can be visible during the first use, and it is normal. This ceases after a short while.

FR Avant utilisation

De la fumée peut être visible lors de la première utilisation. Il s'agit d'un phénomène normal. Cela cesse après un bref instant.

PT Preparar para a utilização

É possível que veja fumo durante a primeira utilização. Isto é normal. Isto deixa de acontecer passado pouco tempo.

FA آماده سازی برای استفاده

ممکن است در اولین استفاده، دود از دستگاه خارج شود که این امر عادی است. این حالت بعد از مدت کمی رفع می‌شود.

AR التحضير للاستخدام

قد يتصاعد الدخان عند الاستخدام للمرة الأولى، وهذا أمر طبيعي. سيتوقف هذا الأمر بعد وقت قصير.

2

