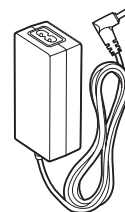
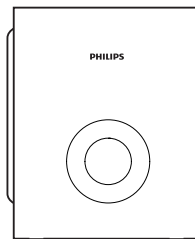


Quick start guide

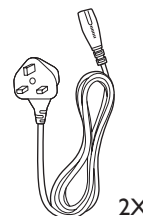
Register your product and get support at
www.philips.com/support



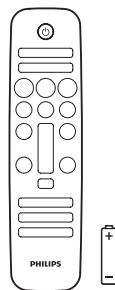
Before using your product, read all accompanying safety information



Power Adapter



Power Cord 2X



4X

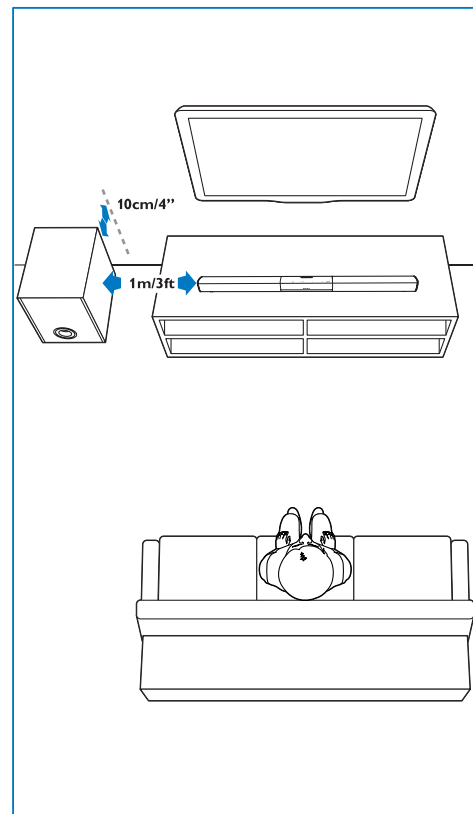
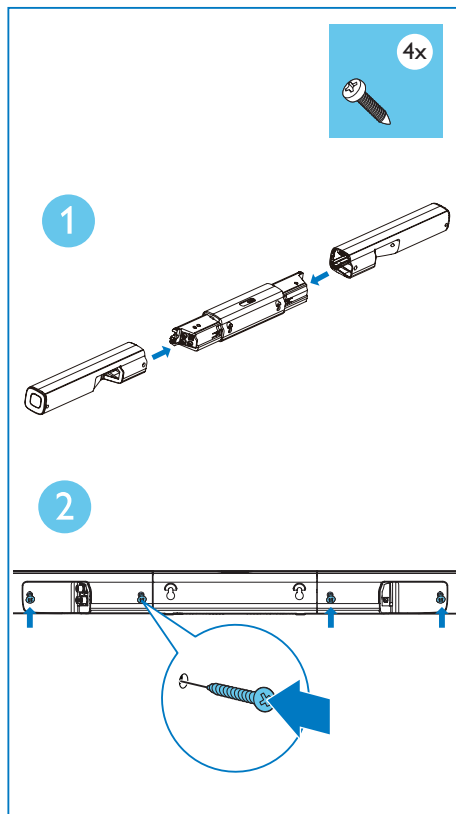


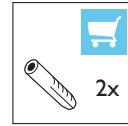
Cable Tie



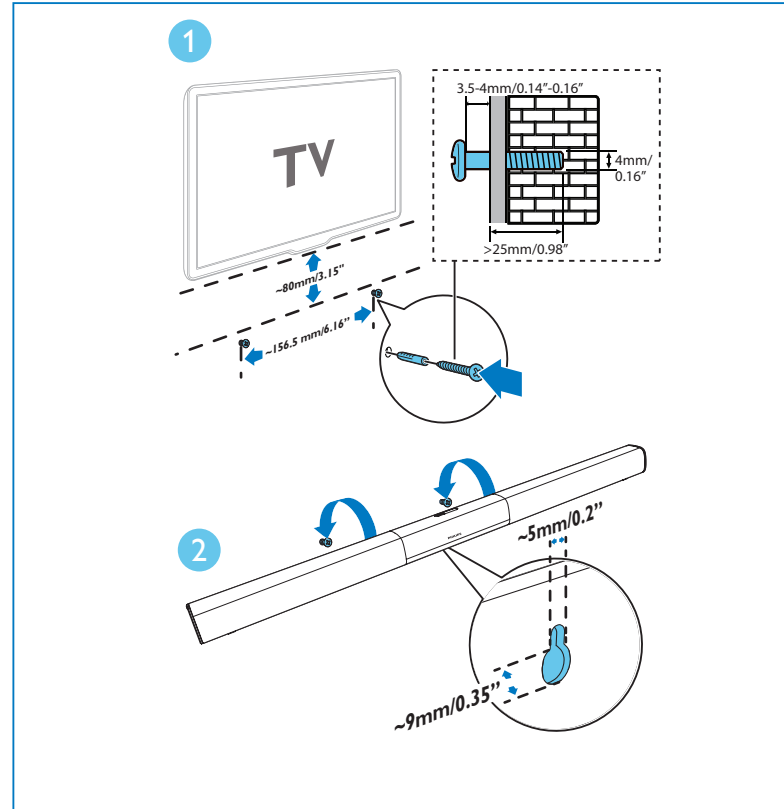
1

Assemble this product
Position this product



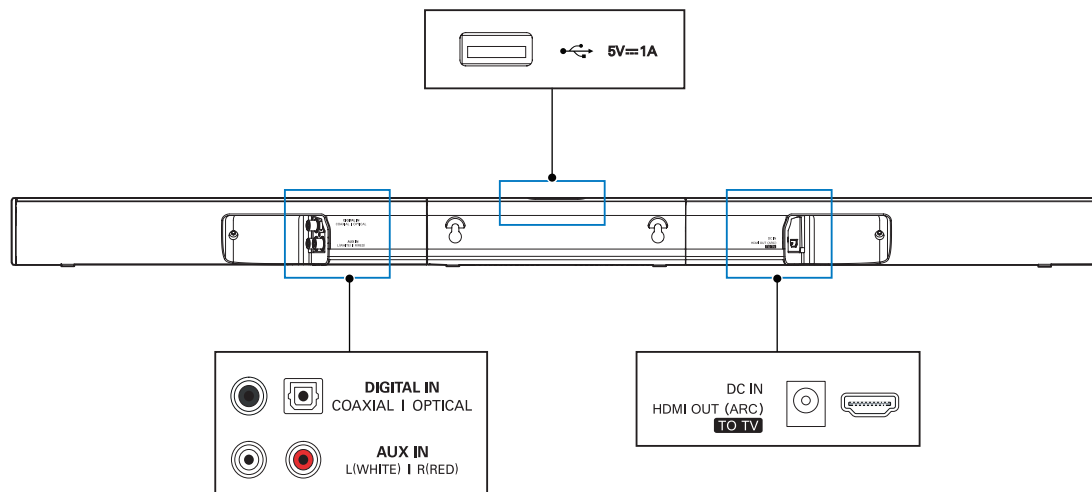


Wall mount this product (optional)



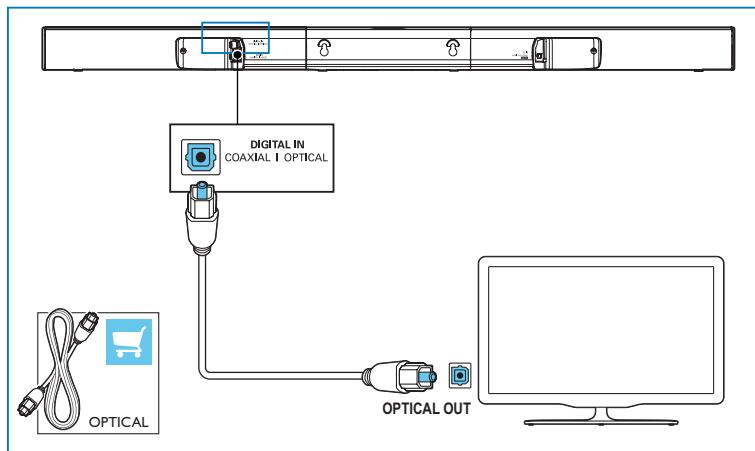
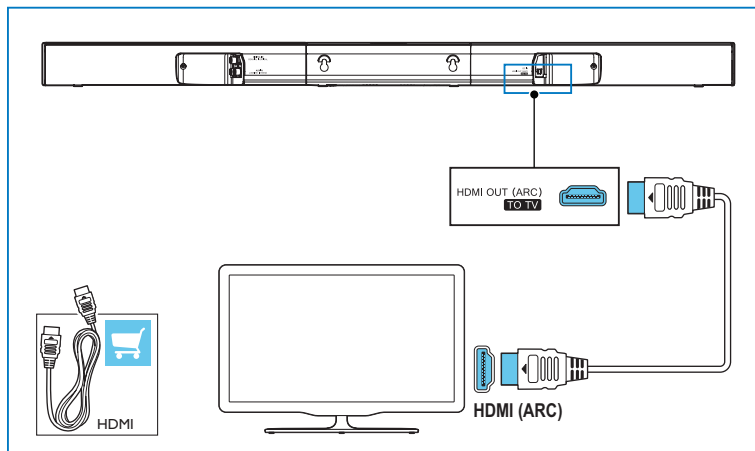
2

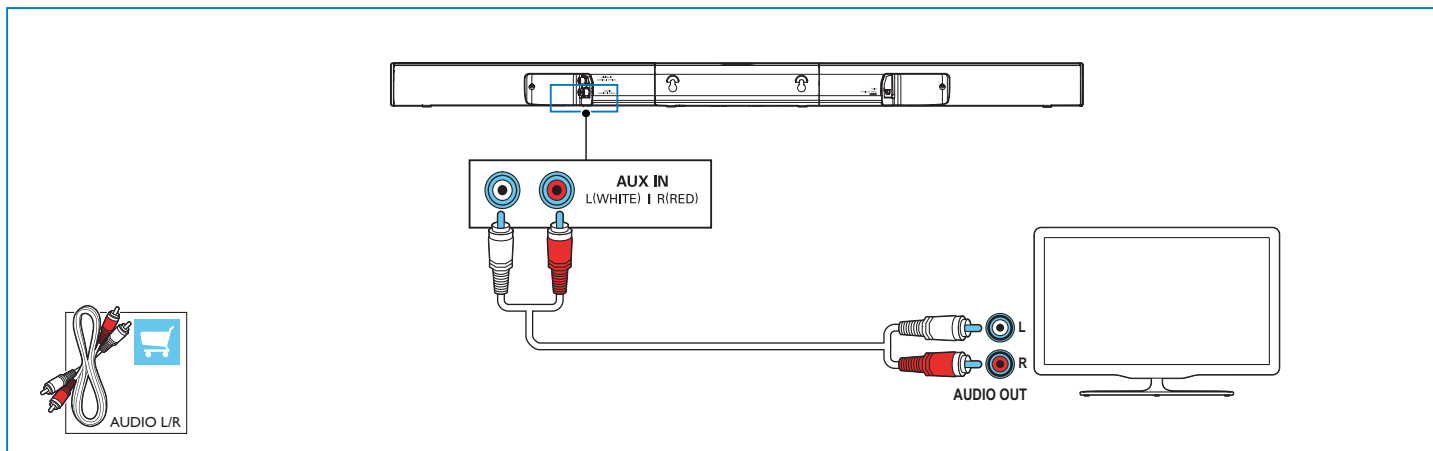
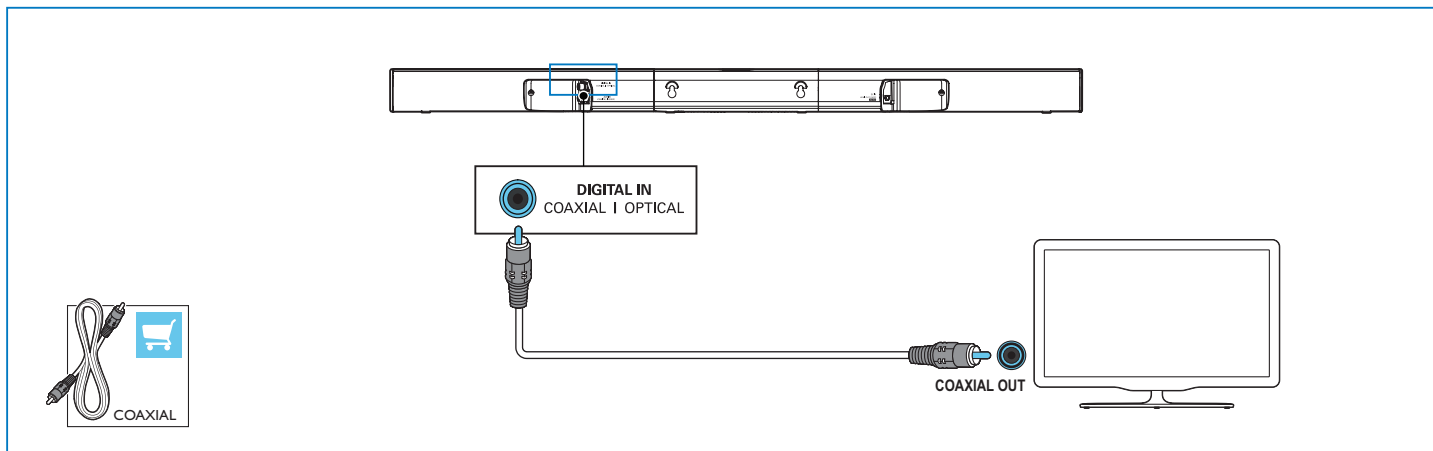
Connect this product



3

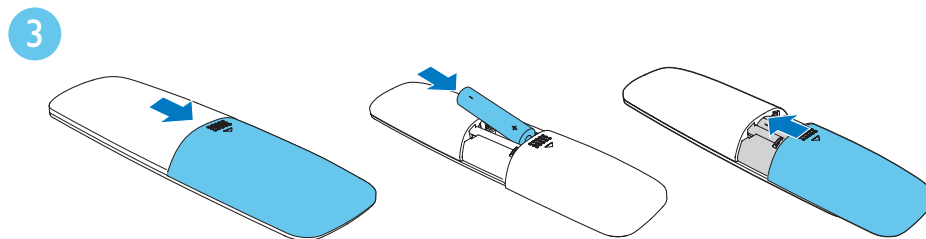
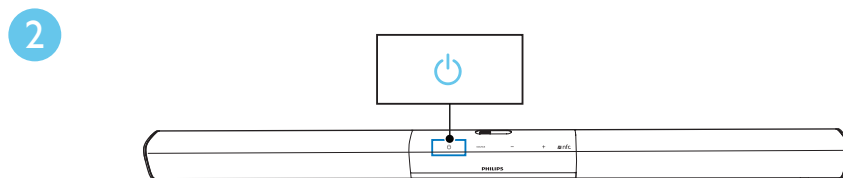
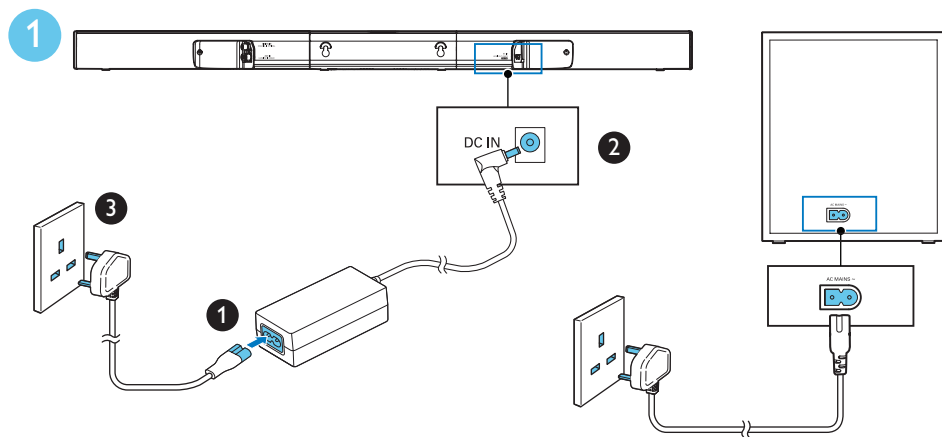
Hear audio from TV in one of the following ways.





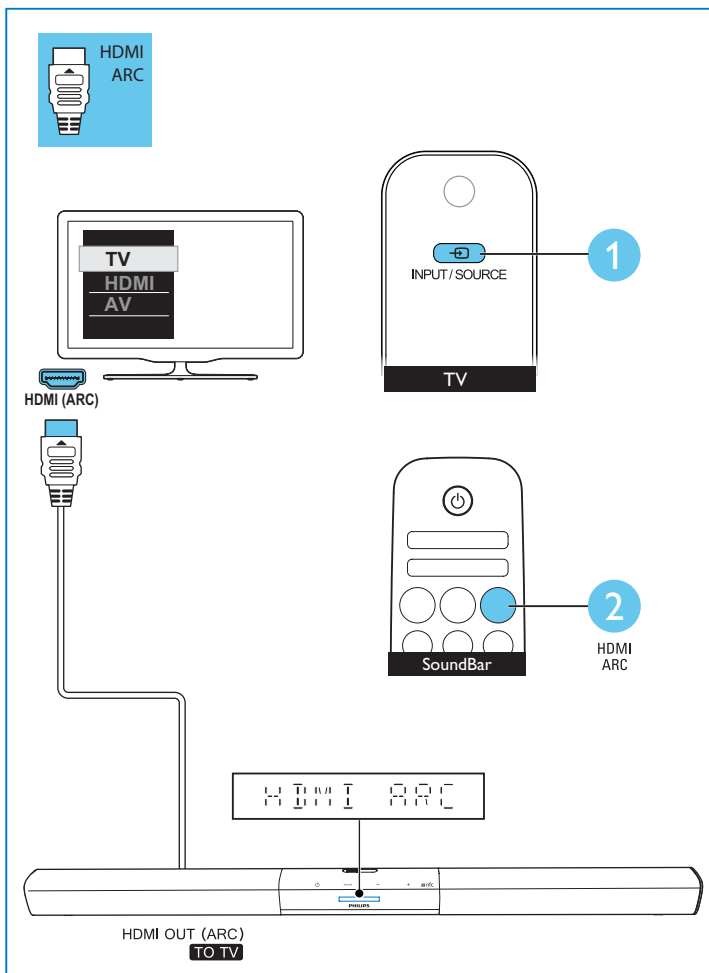
4

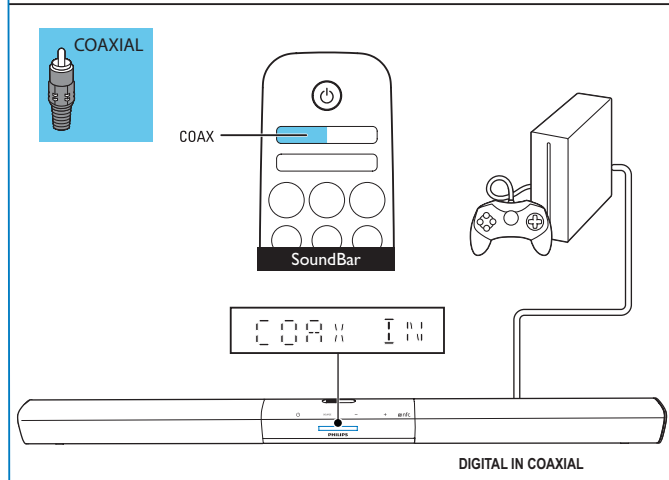
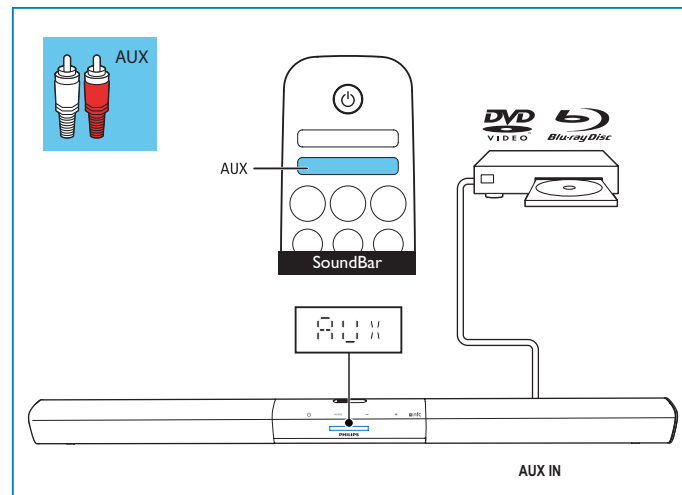
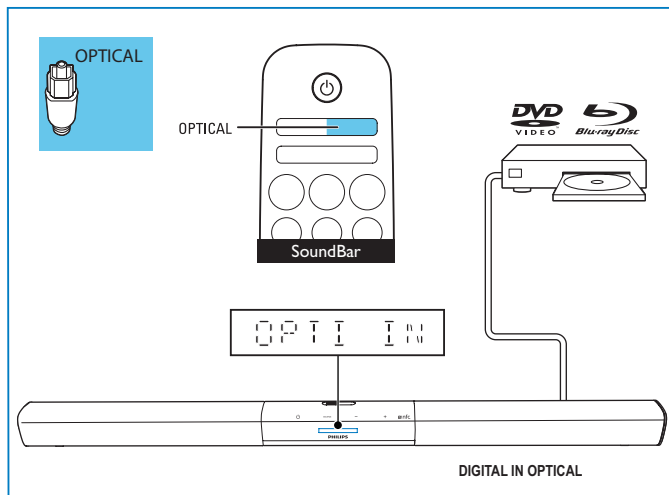
Switch on this product



5

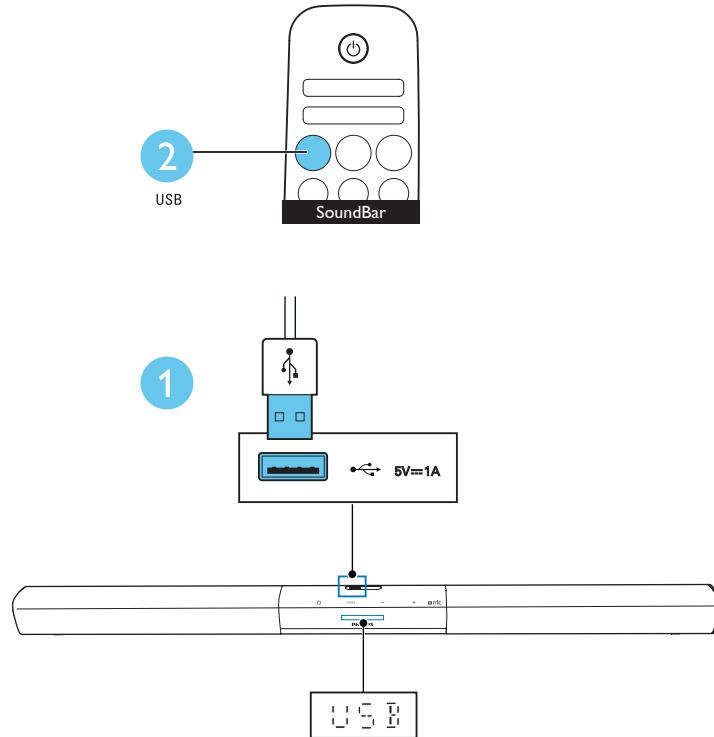
Select the correct audio source





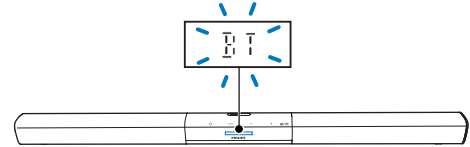
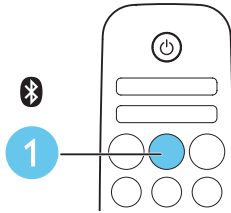
6

Play audio on a USB storage device

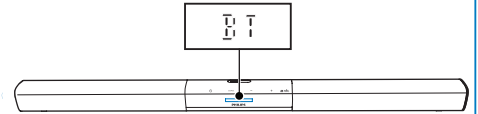


7

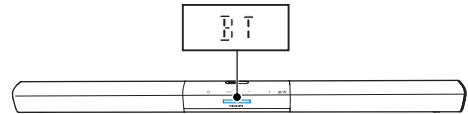
Play audio through Bluetooth



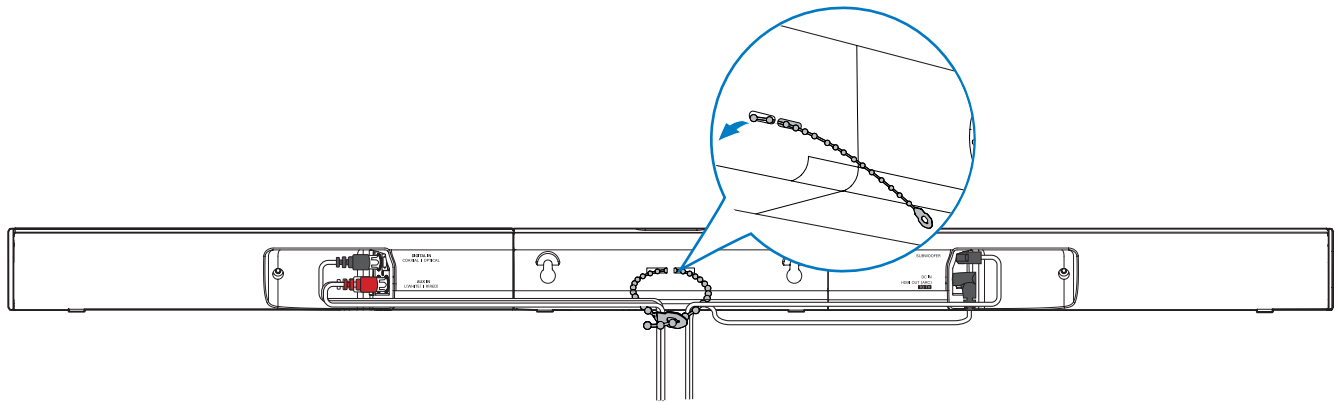
2



3



Cable management





Manufactured under license from Dolby Laboratories. Dolby and the double-D symbol are trademarks of Dolby Laboratories.



The terms HDMI and HDMI High-Definition Multimedia Interface, and the HDMI Logo are trademarks or registered trademarks of HDMI Licensing LLC in the United States and other countries.



The Bluetooth® word mark and logos are registered trademarks owned by Bluetooth SIG, Inc. and any use of such marks by Gibson Innovations Limited is under license. Other trademarks and trade names are those of their respective owners.



For more information about using this product, visit www.philips.com/support



www.philips.com/support



Specifications are subject to change without notice

2016 © Gibson Innovations Limited. All rights reserved.

This product has been manufactured by, and is sold under the responsibility of Gibson Innovations Ltd., and Gibson Innovations Ltd. is the warrantor in relation to this product. Philips and the Philips Shield Emblem are registered trademarks of Koninklijke Philips N.V. and are used under license.

HTL3110B_05_QSG_V1.0

