



# CoreLine Waterproof

## WT120C LED40S/840 PSU L1200 EL3

Coreline Waterproof - LED Module, system flux 4000 lm - 840 neutral white - Power supply unit - Emergency lighting 3 hours duration

Whether for a new building or renovation of an existing space, customers want lighting solutions that provide quality of light and substantial energy and maintenance savings. The new CoreLine Waterproof range of LED products can be used to replace traditional waterproof luminaires with fluorescent lamps. The process of selecting, installing and maintaining is so easy – it's a simple switch.

### Product data

General Information		Flammability mark	
Number of light sources	1 pc	CE mark	For mounting on normally flammable surfaces
Lamp family code	LED40S [ LED Module, system flux 4000 lm]	ENEC mark	CE mark
Beam angle of light source	120 °	UL mark	ENEC mark
Light source color	840 neutral white	Warranty period	-
Light source replaceable	No	Constant light output	5 years
Number of gear units	1 unit	Number of products on MCB of 16 A type B	No
Driver/power unit/transformer	Power supply unit	RoHS mark	24
Driver included	Yes	Product family code	RoHS mark
Optic type	-		WT120C [ Coreline Waterproof]
Optical cover/lens type	Polycarbonate bowl/cover	Operating and Electrical	
Luminaire light beam spread	110°	Input Voltage	220 to 240 V
Emergency lighting	Emergency lighting 3 hours duration	Input Frequency	50 to 60 Hz
Connection	Push-in connector and pull relief	Inrush current	5.3 A
Cable	-	Inrush time	0.07 ms
Protection class IEC	Safety class I	Power Factor (Min)	0.9
Glow-wire test	Temperature 850 °C, duration 30 s		

## CoreLine Waterproof

### Controls and Dimming

Dimmable	No
----------	----

### Mechanical and Housing

Housing Material	Polycarbonate
Reflector material	Steel
Optic material	Polycarbonate
Optical cover/lens material	Polycarbonate
Fixation material	Stainless steel
Optical cover/lens finish	Frosted
Overall length	1223 mm
Overall width	87 mm
Overall height	96 mm

### Approval and Application

Ingress protection code	IP65 [ Dust penetration-protected, jet-proof]
Mech. impact protection code	IK08 [ 5 J vandal-protected]

### Initial Performance (IEC Compliant)

Initial luminous flux	4000 lm
Luminous flux tolerance	+/-10%
Initial LED luminaire efficacy	105 lm/W
Init. Corr. Color Temperature	4000 K
Init. Color Rendering Index	80
Initial chromaticity	(0.38, 0.38) SDCM <3.5
Initial input power	38 W

Power consumption tolerance	+/-10%
-----------------------------	--------

### Over Time Performance (IEC Compliant)

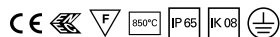
Driver failure rate at 5000 h	1 %
Median useful life L70B50	50000 h
Median useful life L80B50	30000 h
Median useful life L90B50	15000 h

### Application Conditions

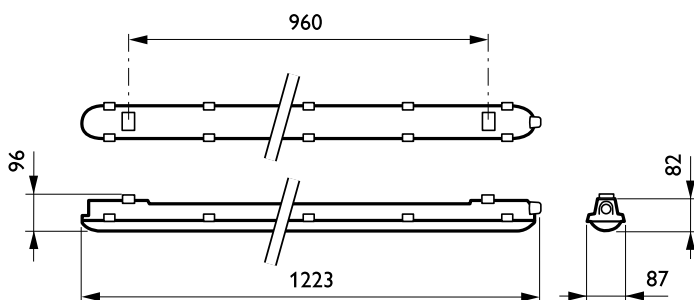
Ambient temperature range	0 to +25 °C
Average ambient temperature	25 °C
Suitable for random switching	Yes (relates to presence/ movement detection and daylight harvesting)

### Product Data

Full product code	871829185419700
Order product name	WT120C LED40S/840 PSU L1200 EL3
EAN/UPC - Product	8718291854197
Order code	910500454304
Numerator - Quantity Per Pack	1
Numerator - Packs per outer box	1
Material Nr. (12NC)	910500454304
Net Weight (Piece)	2.530 kg

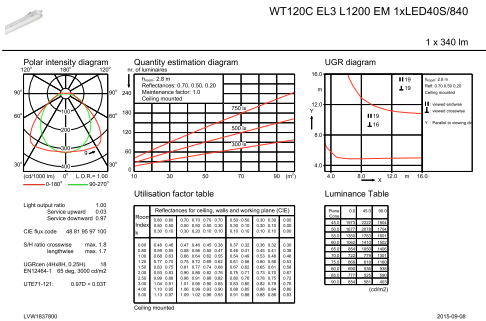


### Dimensional drawing

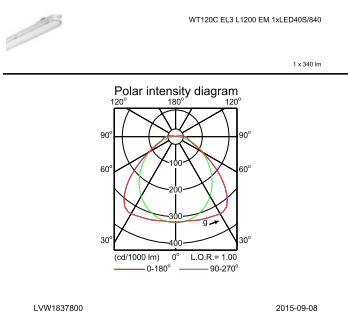


CoreLine Waterproof WT120C

Photometric data



IFGU1\_WT120C EL3 L1200 EM 1xLED40S840.EPS



IFPC1\_WT120C EL3 L1200 EM 1xLED40S840.EPS

