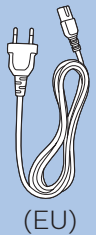
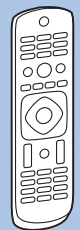
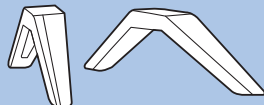


TV



(4132 series)



(EU)



(UK)



PHILIPS



Quick start guide

PHILIPS

Register your product and get support at
www.philips.com/welcome

4032 series
4132 series

PHILIPS



English – Read the safety instructions.

Български - Прочетете инструкциите за безопасност.

Čeština – Přečtěte si bezpečnostní pokyny.

Hrvatski – Pročitajte sigurnosne upute.

Dansk – Læs sikkerhedsforskrifterne.

Deutsch – Lesen Sie die Sicherheitshinweise.

Ελληνικά - Διαβάστε τις οδηγίες ασφαλείας.

Eesti – Lugege ohutusnõudeid.

Español – Lea las instrucciones de seguridad.

Français – Lisez les consignes de sécurité.

Gaeilge – Léigh na treoracha sábháilteachta.

Bahasa Indonesia – Baca petunjuk keselamatan.

Italiano – Leggere le istruzioni di sicurezza.

Казакша – Қорғаныстық нұсқаулар.

Latviešu – Izlasiet drošības norādījumus.

Lietuvių – Perskaitykite saugos instrukcijas.

Македонски – Прочитајте ги безбедносните инструкции.

Magyar – Olvassa el a biztonsági utasításokat.

Bahasa Malaysia – Baca arahan keselamatan.

Nederlands – Lees de veiligheidsvoorschriften.

Norsk – Les sikkerhetsforskriftene.

Polski – Zapoznaj się z instrukcjami bezpieczeństwa.

Português – Leia as instruções de segurança.

Română – Citiți instrucțiunile de siguranță.

Русский – Читайте инструкции по технике безопасности.

Srpski – Pročitajte bezbednosna uputstva.

Slovenščina – Preberite varnostna navodila.

Slovenský – Prečítajte si bezpečnostné pokyny.

Suomi – Lue turvaohjeet.

Svenska – Läs säkerhetsinstruktionerna.

ภาษาไทย – โปรดอ่านคำแนะนำด้านความปลอดภัย

Türkçe – Güvenlik talimatlarını okuyun.

Українська – Читайте інструкції з техніки безпеки.

Кыргызча – Коопсуздук техникасы боюнча нускаманы окуңуз.

Tiếng Việt – Hãy đọc chỉ dẫn an toàn.

简体中文 – 请阅读安全说明。

繁體中文 – 請閱讀安全說明。

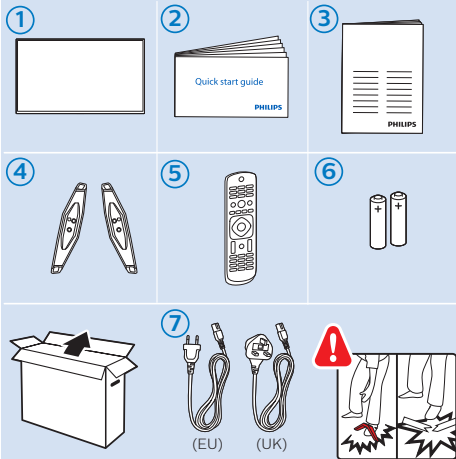
العربية قراءة تعليمات السلامة.

עברית קראו את הוראות הבטיחות

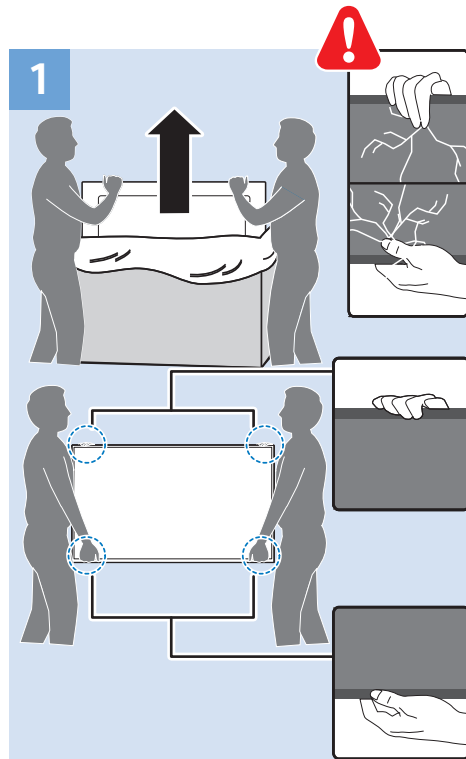
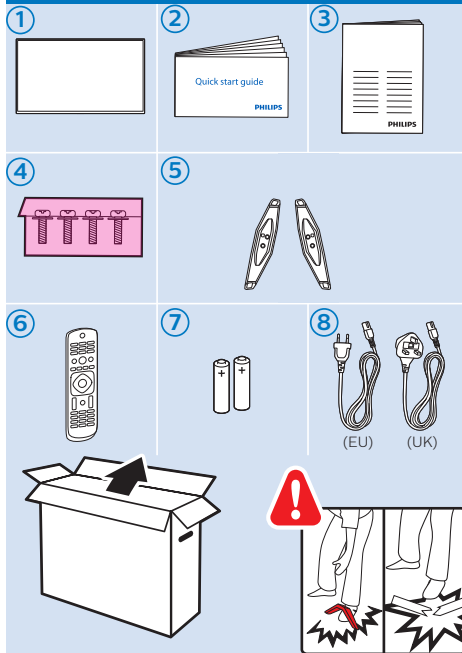


32"

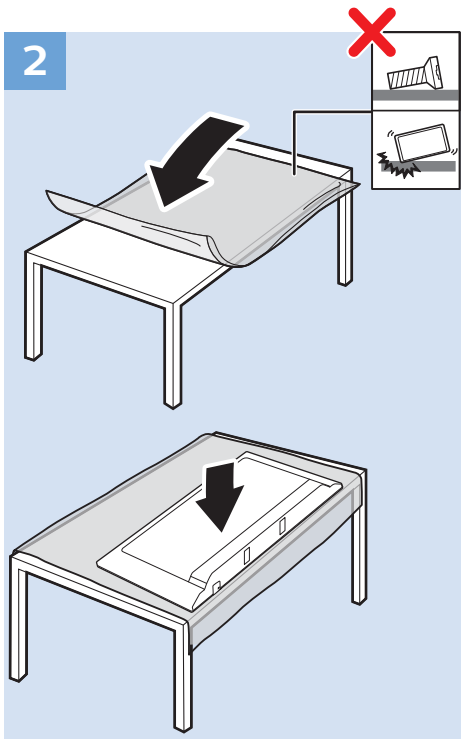
4032 series



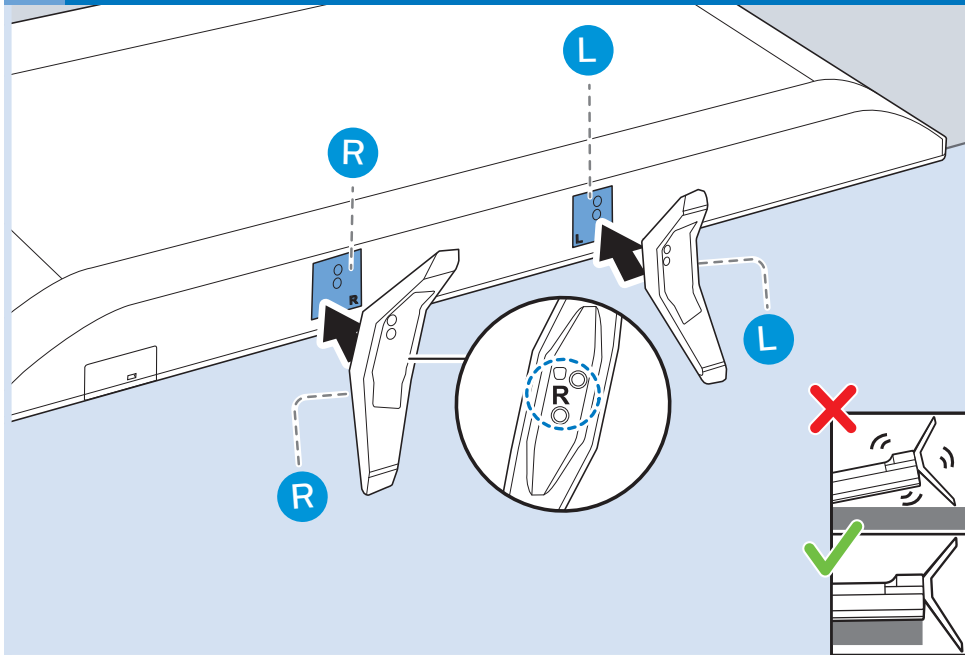
4132 series



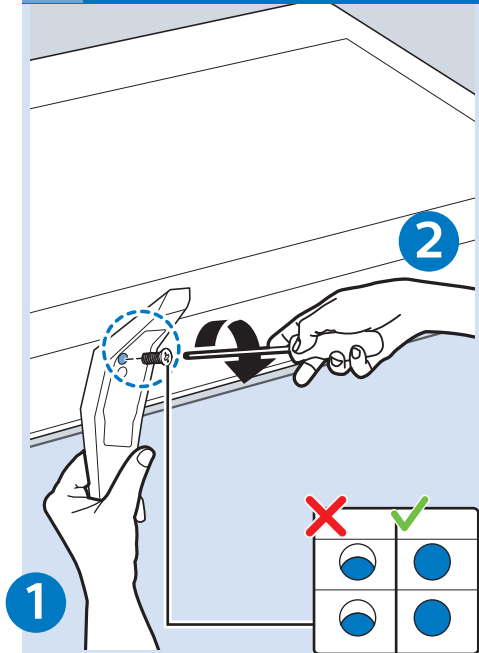
2



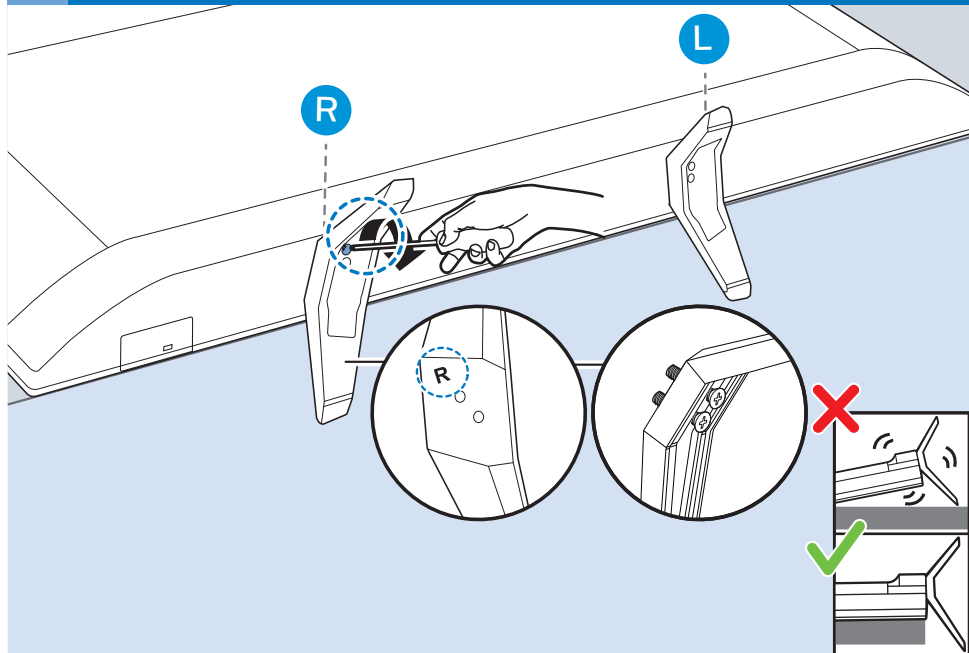
3a 4132 series



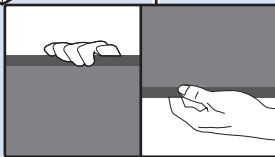
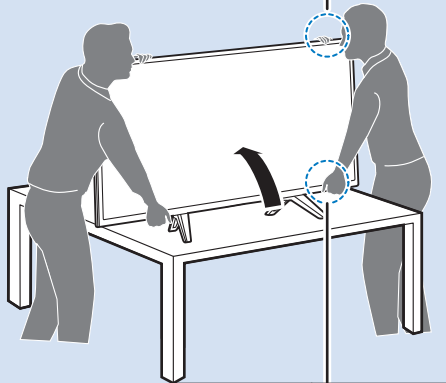
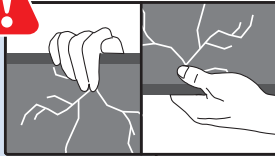
3b 4132 series



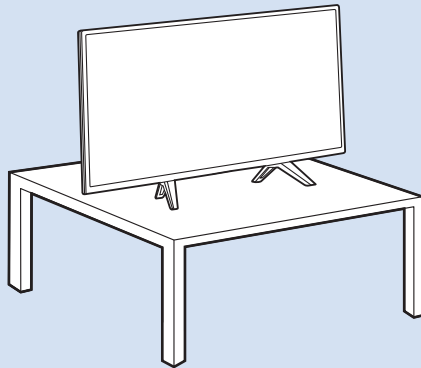
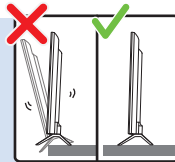
3c 4032 series

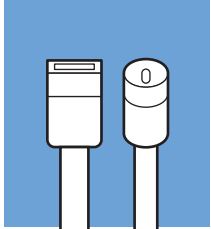


4

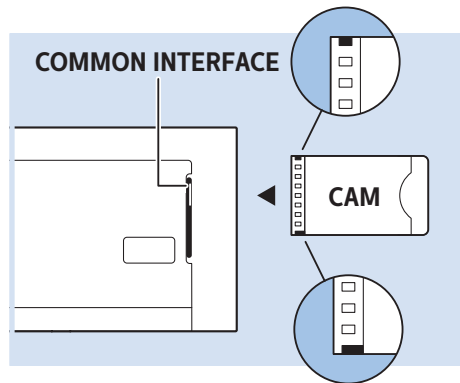
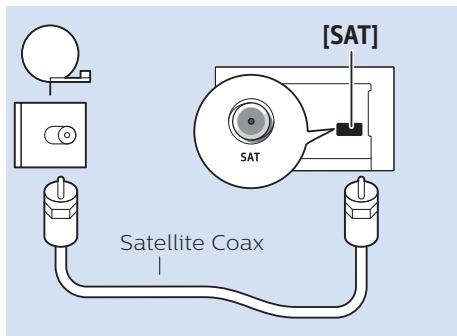
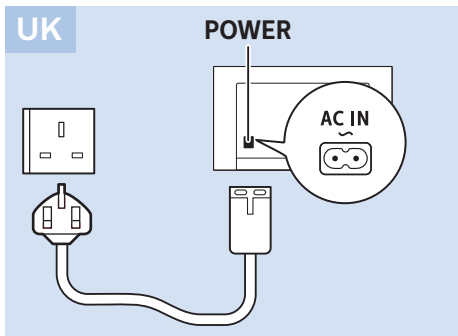
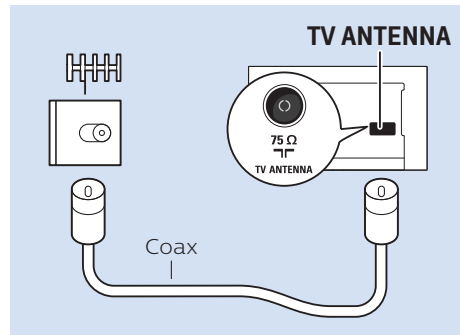
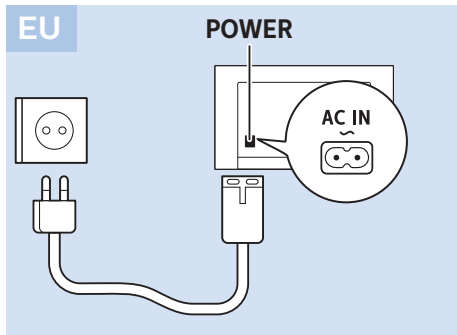


5

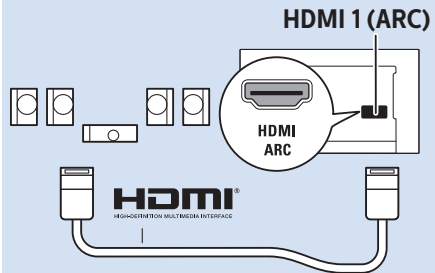




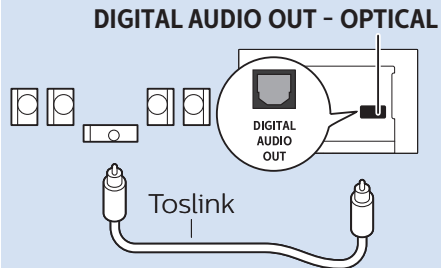
www.philips.com/connectivityguide



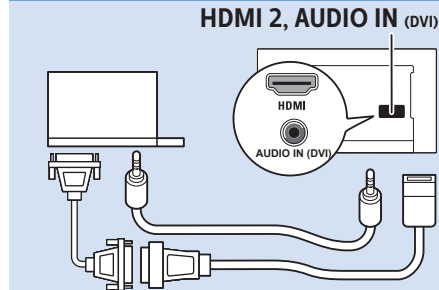
Digital Audio System - HDMI ARC



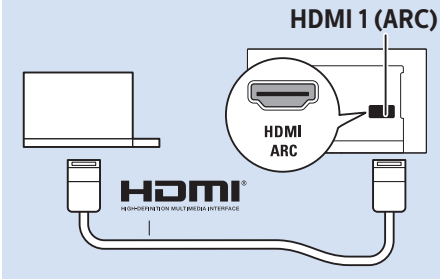
Digital Audio System - OPTICAL



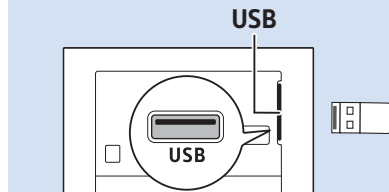
Computer - DVI



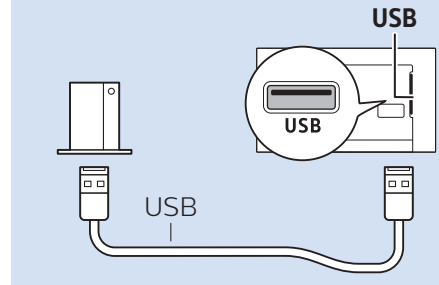
Computer - HDMI



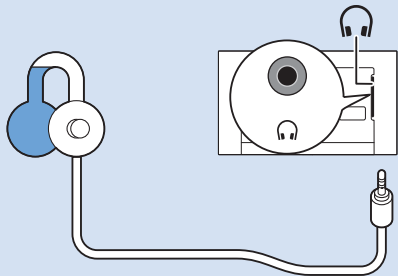
USB Flash Drive



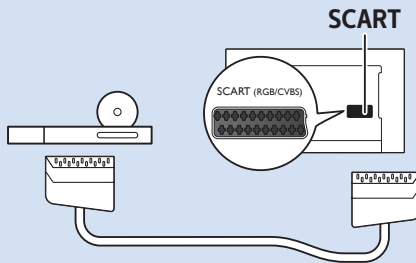
USB Hard Drive



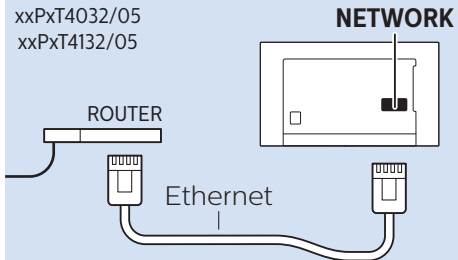
Headphones

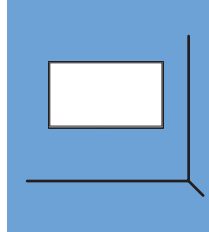
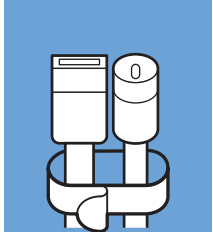


DVD Player - SCART



Network - Wired (Freeview)

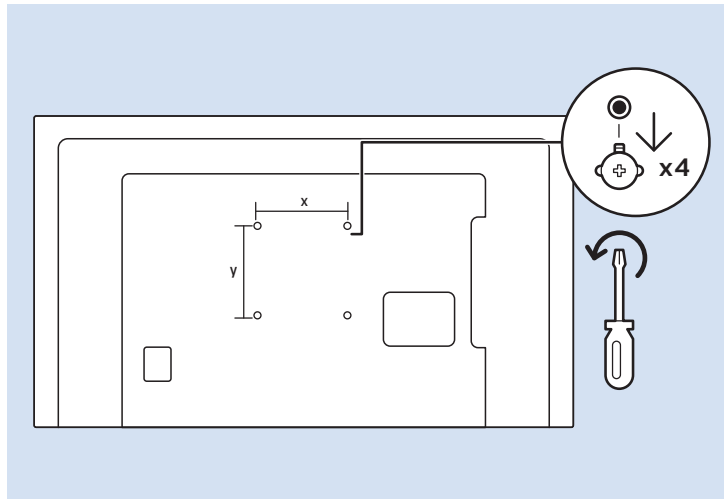
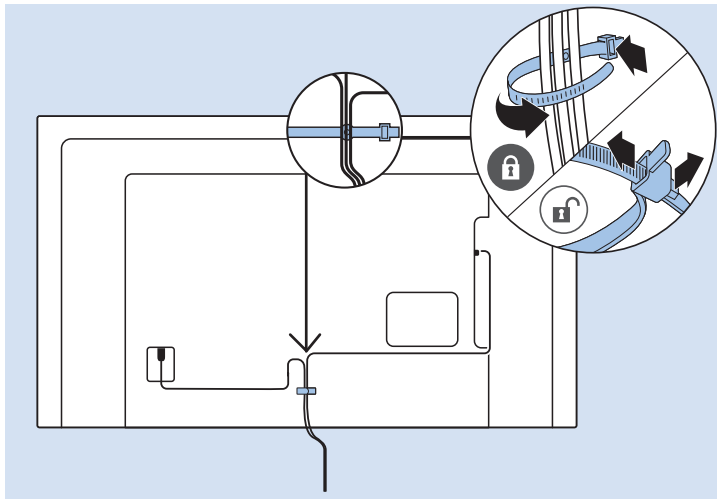


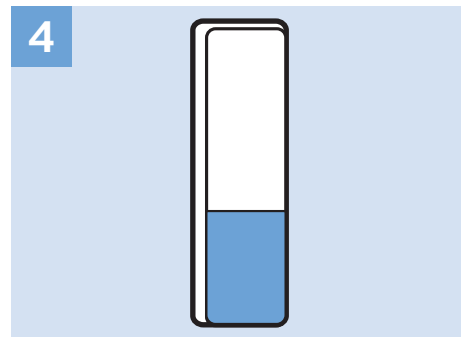
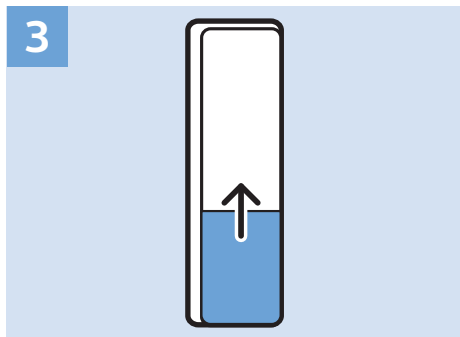
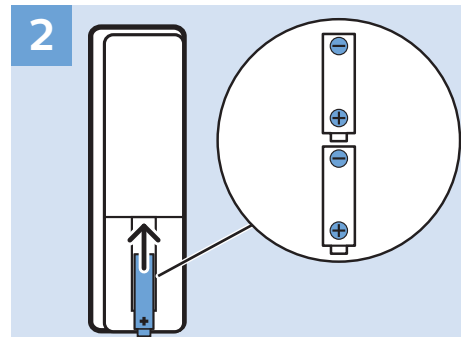
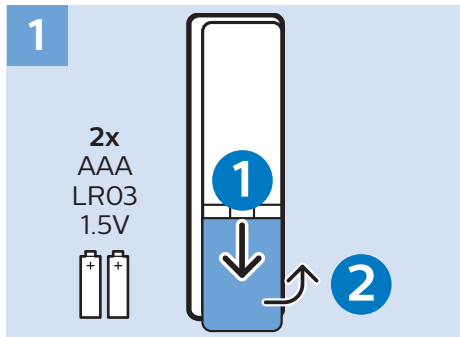
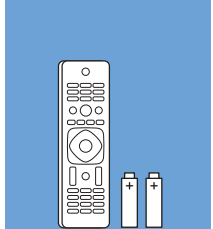


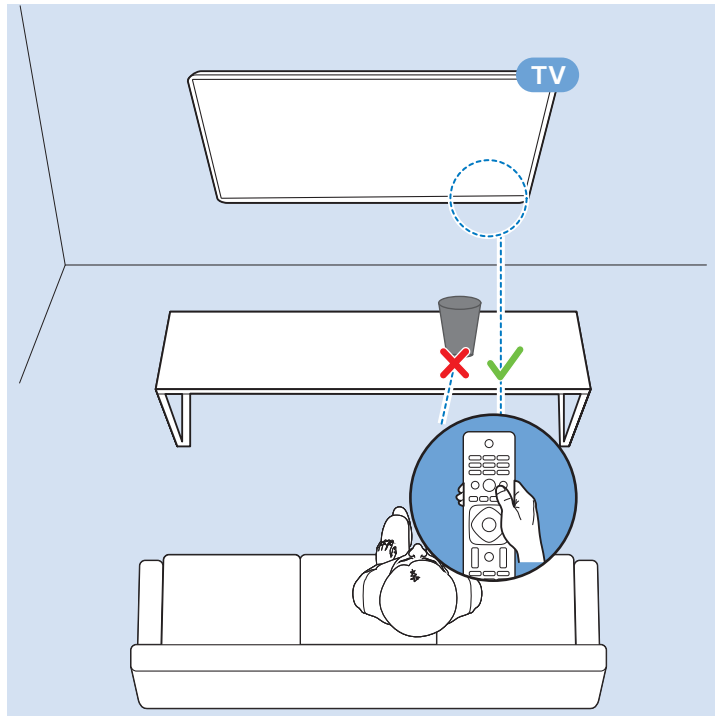
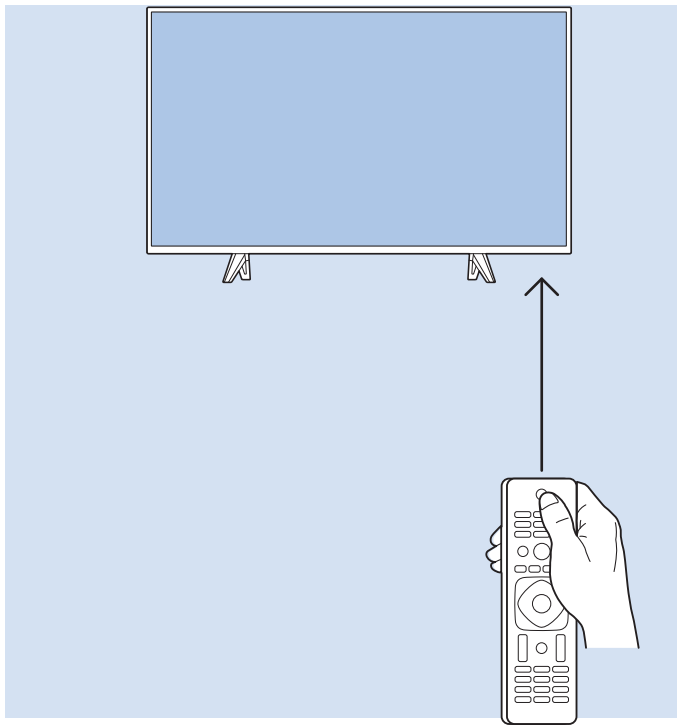
VESA (x, y)
32" 100x100 M4

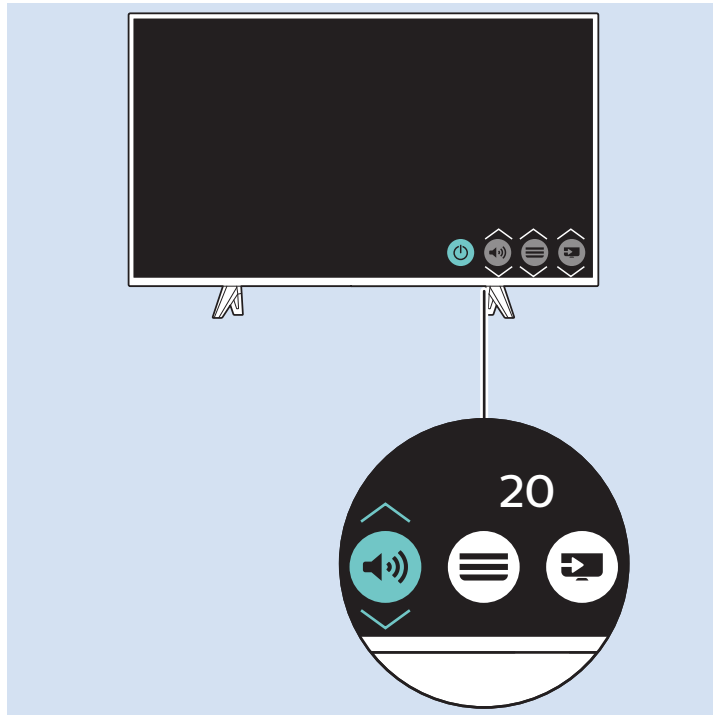
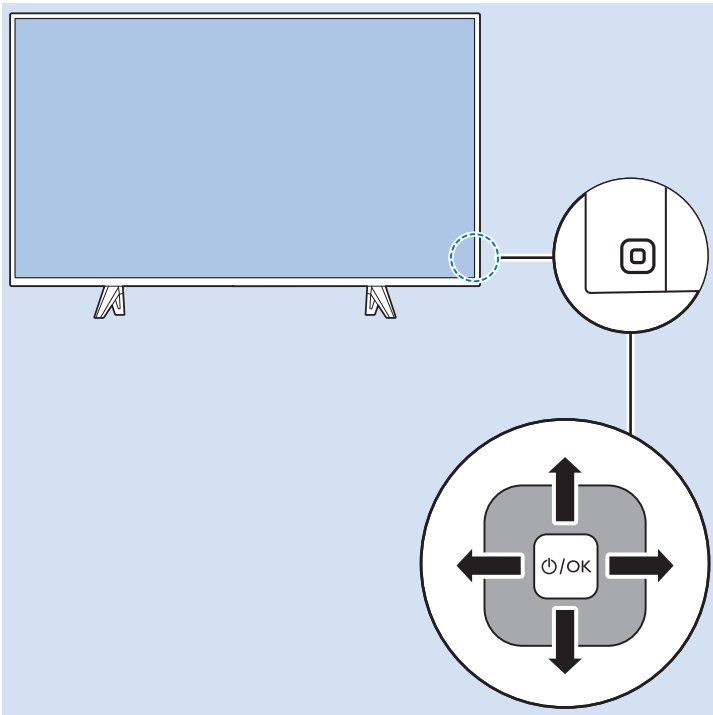
32"

80cm



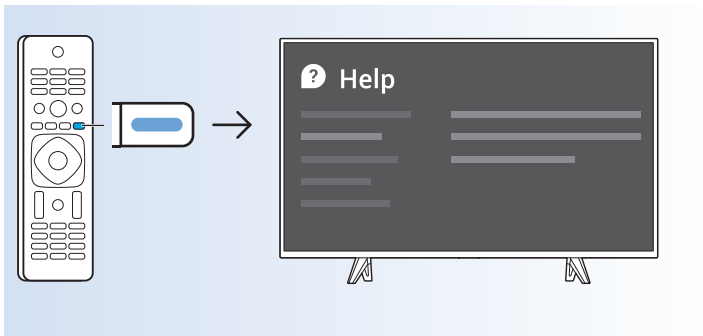




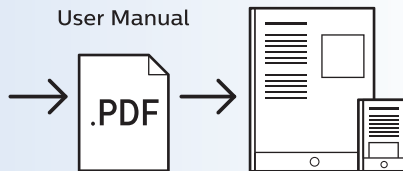




Help | Hilfe | Aide
Guida | Ayuda
Pomoc | Yardım
Руководство



philips.com/support





All registered and unregistered trademarks are property of their respective owners.
Specifications are subject to change without notice.
Philips and the Philips' shield emblem are trademarks of Koninklijke Philips N.V.
and are used under license from Koninklijke Philips N.V.
2017 © TP Vision Europe B.V. All rights reserved.

philips.com