



MASTER LEDtube EM/Mains T8

MAS LEDtube 1200mm UO 16W 865 T8

The Philips MASTER LEDtube integrates a LED light source into a traditional fluorescent form factor. Its unique design creates a perfectly uniform visual appearance which cannot be distinguished from traditional fluorescent. For those that are looking for value for money within limited budget and re-lamping efforts for better light effect and lifetime.

Product data

| General Information | | Temperature | |
|---------------------------------------|----------------------------------|---------------------------------|-----------|
| Cap-Base | G13 [Medium Bi-Pin Fluorescent] | Lamp Current (Min) | 68 mA |
| Nominal Lifetime (Nom) | 50000 h | Starting Time (Nom) | 0.5 s |
| Switching Cycle | 200000X | Warm Up Time To 60% Light (Nom) | 0.5 s |
| B50L70 | 50000 h | Power Factor (Nom) | 0.9 |
| Light Technical | | Voltage (Nom) | 220-240 V |
| Color Code | 865 [CCT of 6500K] | Controls and Dimming | |
| Luminous Flux (Nom) | 2500 lm | Dimmable | No |
| Luminous Flux (Rated) (Nom) | 2500 lm | Mechanical and Housing | |
| Correlated Color Temperature (Nom) | 6500 K | Product Length | 1200 mm |
| Color Consistency | <6 | | |
| Color Rendering Index (Nom) | 83 | | |
| LLMF At End Of Nominal Lifetime (Nom) | 70 % | | |
| Operating and Electrical | | | |
| Input Frequency | 50 to 60 Hz | | |
| Power (Rated) (Nom) | 16 W | | |
| Lamp Current (Max) | 75 mA | | |

MASTER LEDtube EM/Mains T8

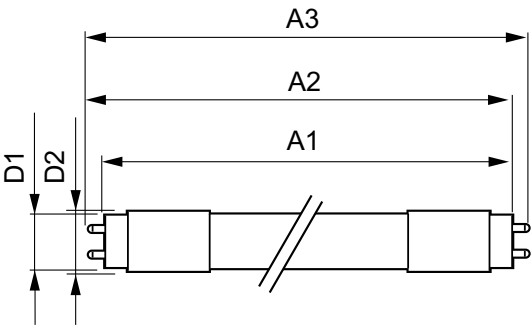
| | |
|-------------------------------|--|
| Approval and Application | |
| Energy Saving Product | Yes |
| Energy Efficiency Label (EEL) | A++ |
| Approval Marks | TUV CE marking RoHS compliance KEMA Keur certificate |
| Energy Consumption kWh/1000 h | 16 kWh |
| Product Data | |
| Full product code | 871869668740600 |

| | |
|---------------------------------|----------------------------------|
| Order product name | MAS LEDtube 1200mm UO 16W 865 T8 |
| EAN/UPC - Product | 8718696687406 |
| Order code | 929001298002 |
| Numerator - Quantity Per Pack | 1 |
| Numerator - Packs per outer box | 10 |
| Material Nr. (12NC) | 929001298002 |
| Net Weight (Piece) | 0.270 kg |

Warnings and Safety

- NOTES: The overall energy efficiency and light distribution of any installation that uses these lamps are determined by the design of the installation.

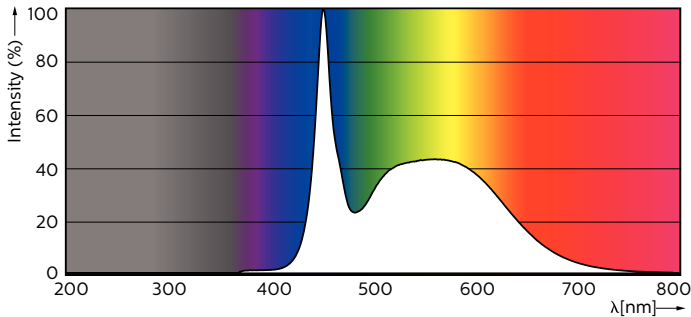
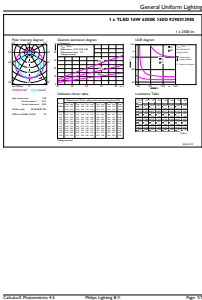
Dimensional drawing



TLED 4ft 16W-36W 2500lm 160D 6500K G13ND

| Product | D1 | D2 | A1 | A2 | A3 |
|----------------------------------|----------|-------|-----------|-----------|-----------|
| MAS LEDtube 1200mm UO 16W 865 T8 | 25.78 mm | 28 mm | 1198.2 mm | 1205.3 mm | 1212.4 mm |

Photometric data



MASTER LEDtube EM/Mains T8

