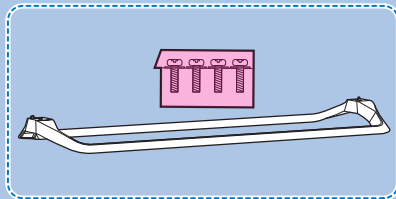
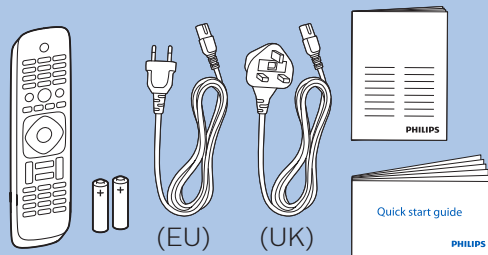
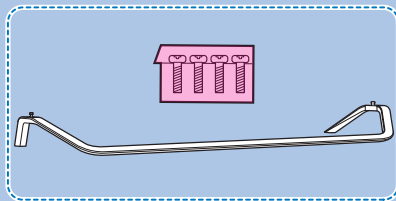


43"/49"/50"/55" ▶ P.3



65" ▶ P.7



Register your product and get support at
www.philips.com/welcome

6262 series

PHILIPS



English – Read the safety instructions.

Български - Прочетете инструкциите за безопасност.

Čeština – Přečtěte si bezpečnostní pokyny.

Hrvatski – Pročitajte sigurnosne upute.

Dansk – Læs sikkerhedsforskrifterne.

Deutsch – Lesen Sie die Sicherheitshinweise.

Ελληνικά - Διαβάστε τις οδηγίες ασφαλείας.

Eesti – Lugege ohutusnõudeid.

Español – Lea las instrucciones de seguridad.

Français – Lisez les consignes de sécurité.

Gaeilge – Léigh na treoracha sábháilteachta.

Bahasa Indonesia – Baca petunjuk keselamatan.

Italiano – Leggere le istruzioni di sicurezza.

Казакша – Қорғаныстық нұсқаулар.

Latviešu – Izlasiet drošības norādījumus.

Lietuvių – Perskaitykite saugos instrukcijas.

Македонски – Прочитајте ги безбедносните инструкции.

Magyar – Olvassa el a biztonsági utasításokat.

Bahasa Malaysia – Baca arahan keselamatan.

Nederlands – Lees de veiligheidsvoorschriften.

Norsk – Les sikkerhetsforskriftene.

Polski – Zapoznaj się z instrukcjami bezpieczeństwa.

Português – Leia as instruções de segurança.

Română – Citiți instrucțiunile de siguranță.

Русский – Читайте инструкции по технике безопасности.

Srpski – Pročitajte bezbednosna uputstva.

Slovenščina – Preberite varnostna navodila.

Slovenský – Prečítajte si bezpečnostné pokyny.

Suomi – Lue turvaohjeet.

Svenska – Läs säkerhetsinstruktionerna.

ภาษาไทย – โปรดอ่านคำแนะนำด้านความปลอดภัย

Türkçe – Güvenlik talimatlarını okuyun.

Українська – Читайте інструкції з техніки безпеки.

Кыргызча – Коопсуздук техникасы боюнча нускаманы окуңуз.

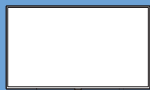
Tiếng Việt – Hãy đọc chỉ dẫn an toàn.

简体中文 – 请阅读安全说明。

繁體中文 – 請閱讀安全說明。

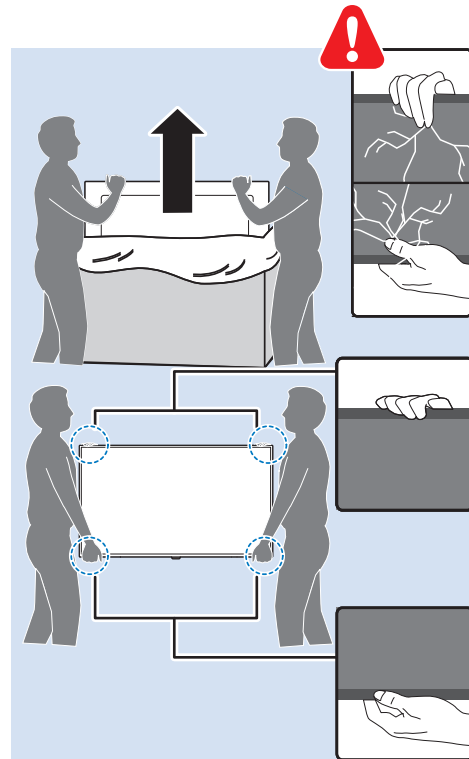
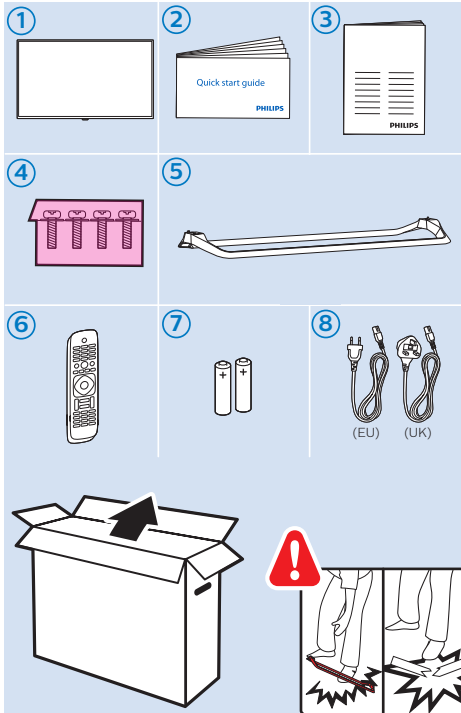
العربية – قراءة تعليمات السلامة.

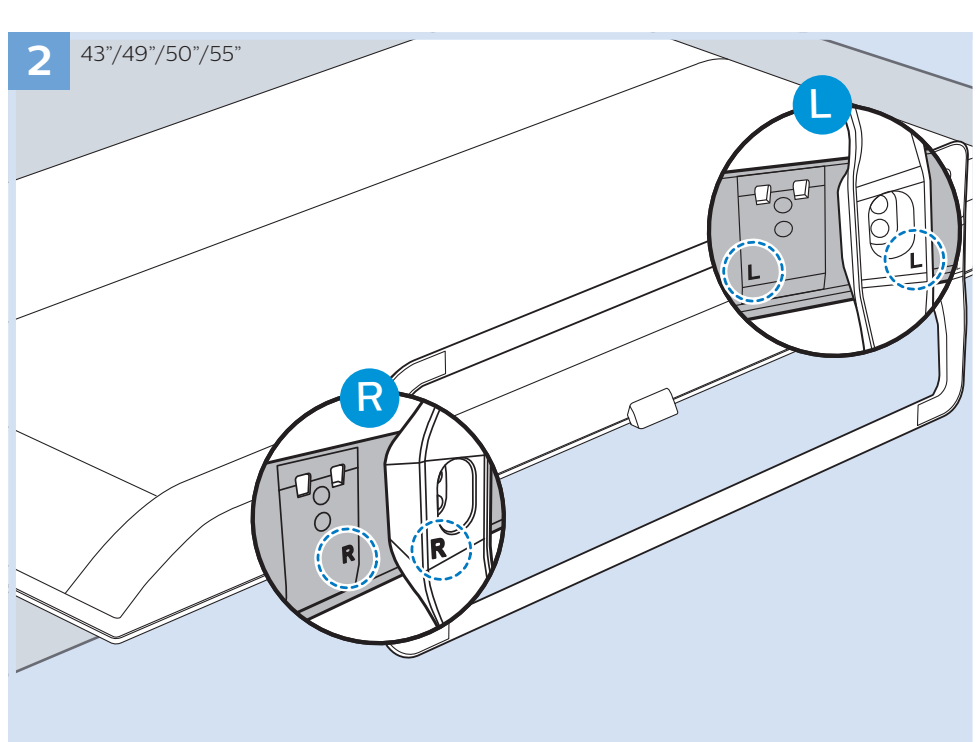
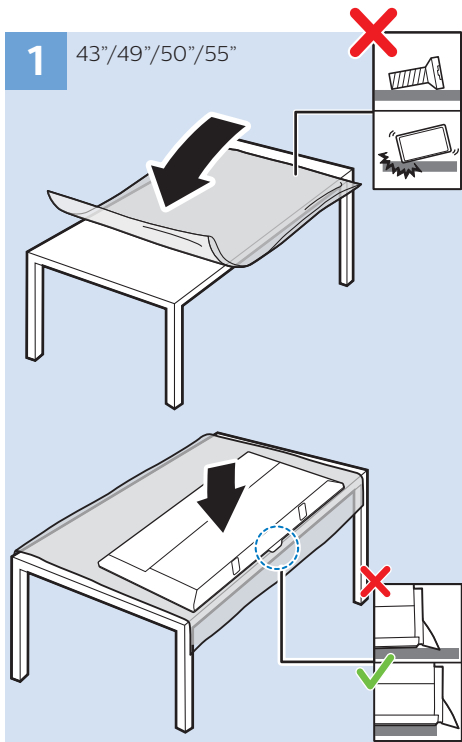
עברית – קראו את הוראות הבטיחות



43"/49"/50"/55"

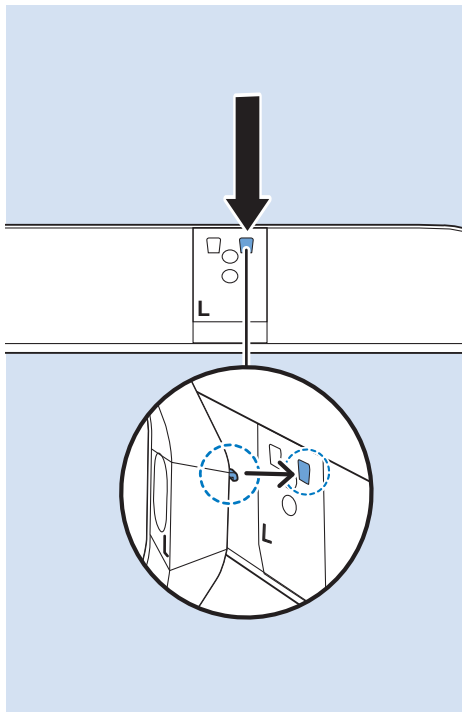
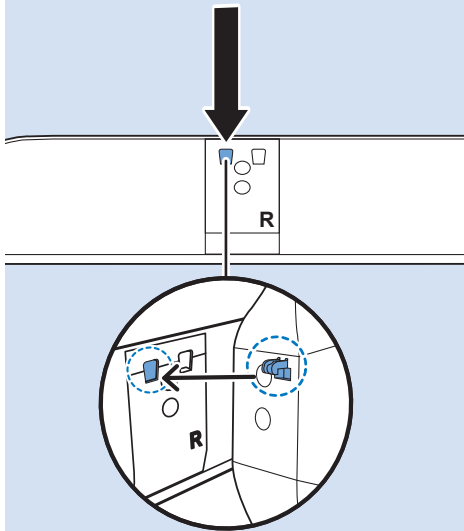
43"/49"/50"/55"





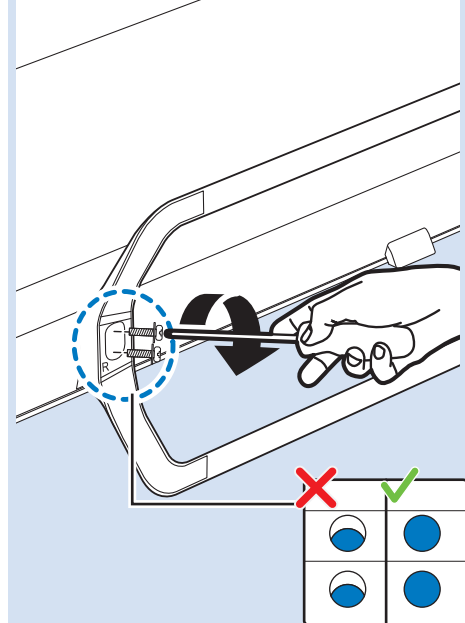
3

43"/49"/50"/55"



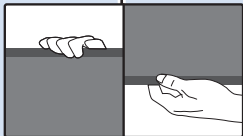
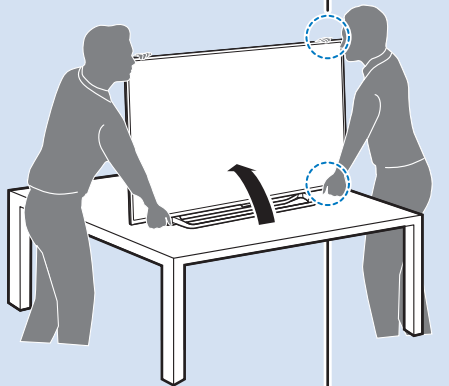
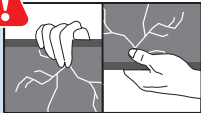
4

43"/49"/50"/55"



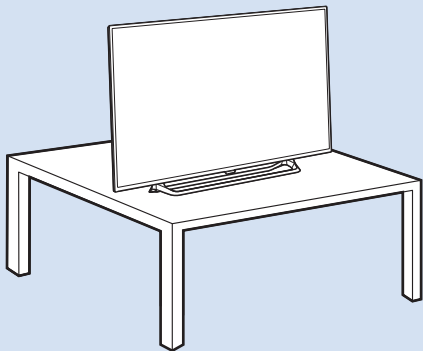
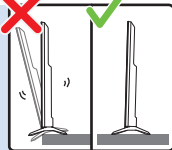
5

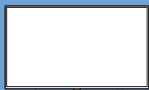
43"/49"/50"/55"



6

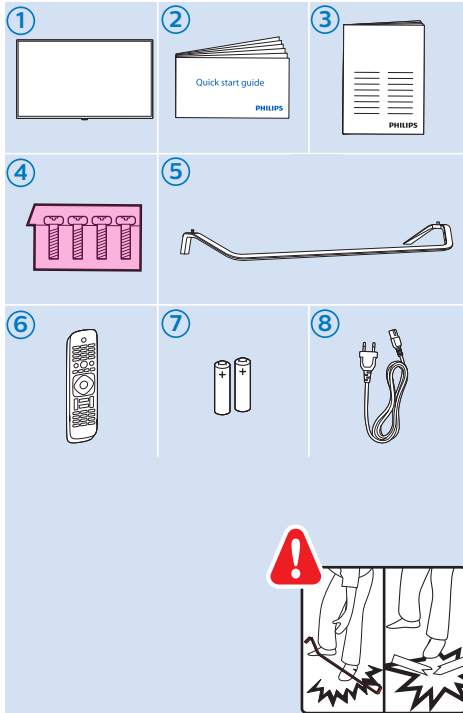
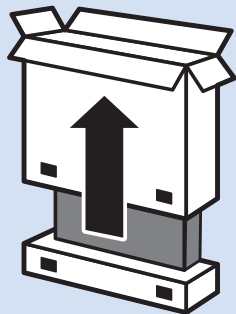
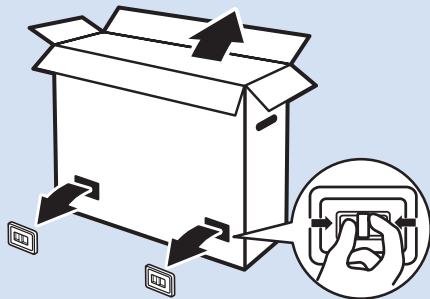
43"/49"/50"/55"

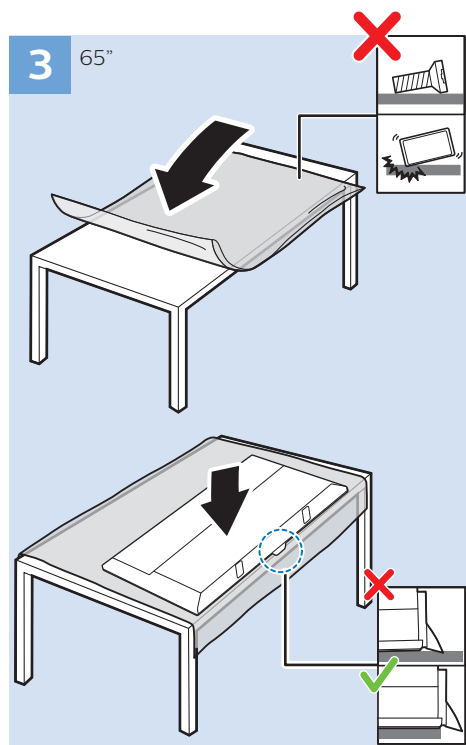
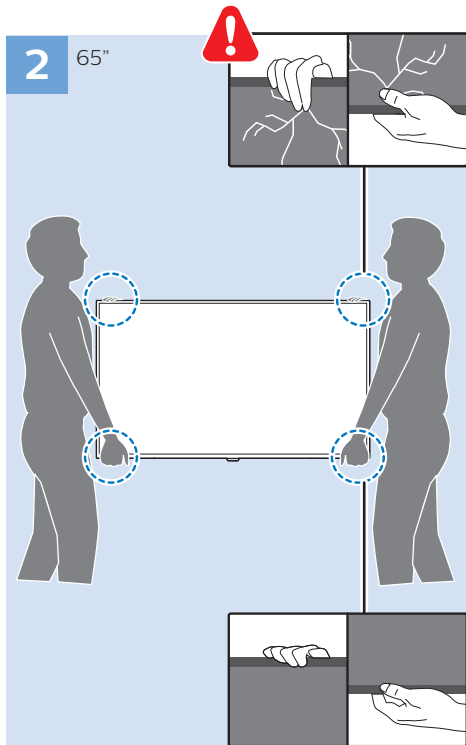
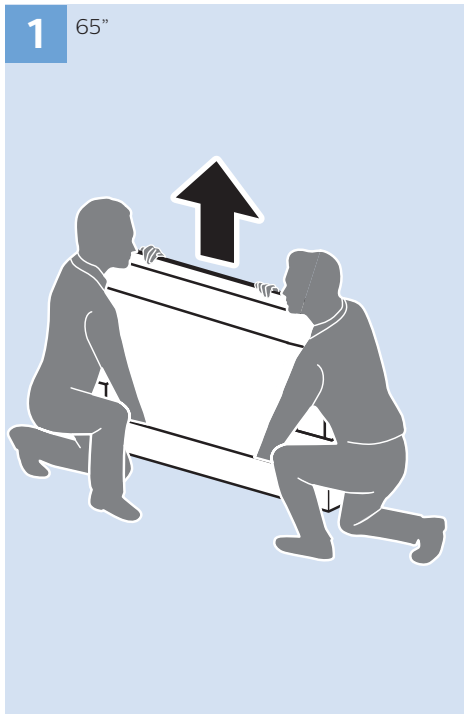




65"

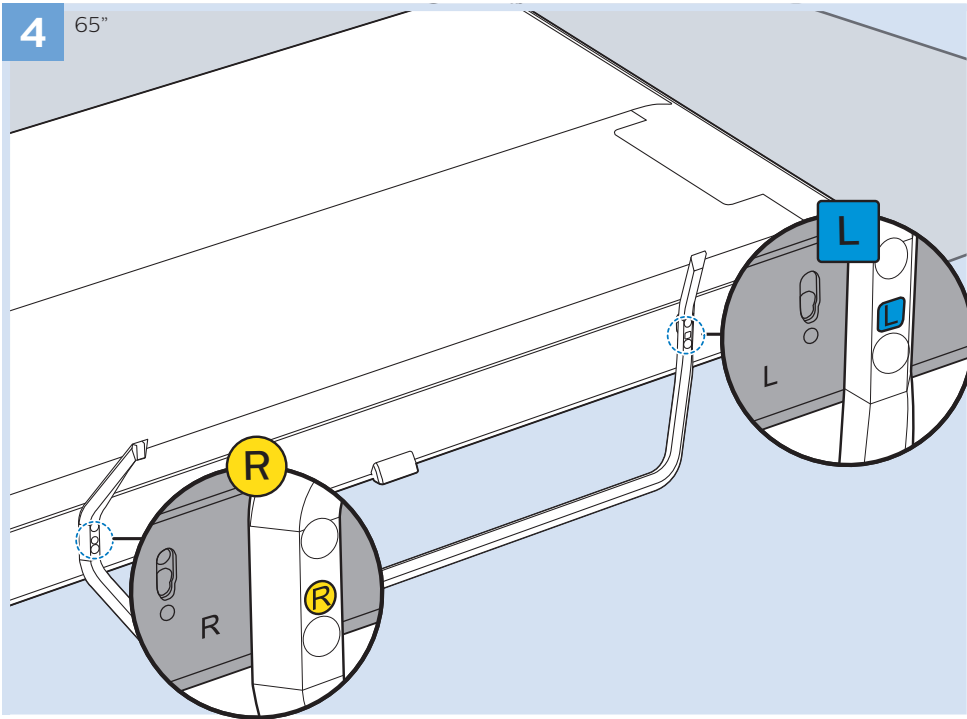
65"





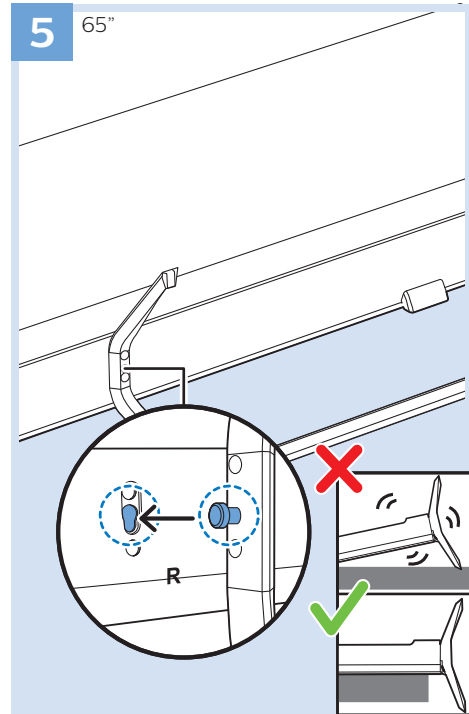
4

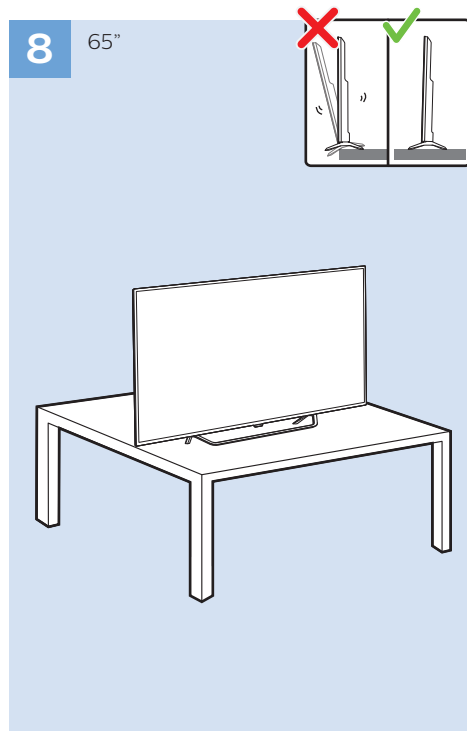
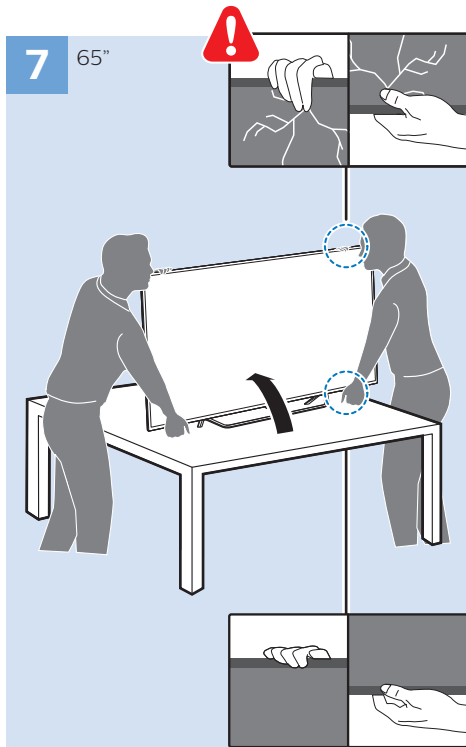
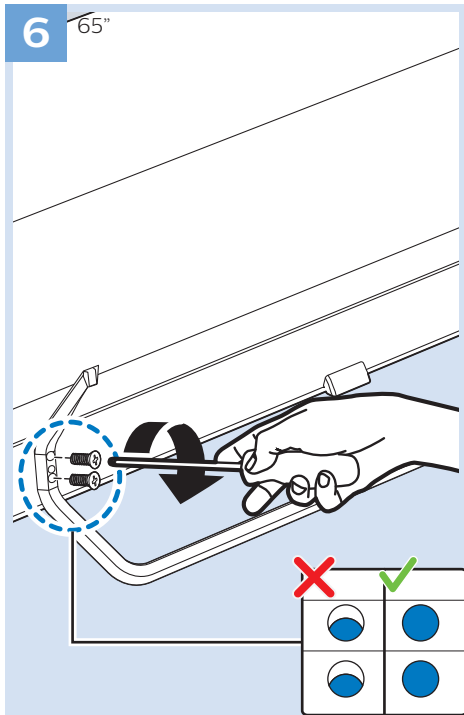
65"

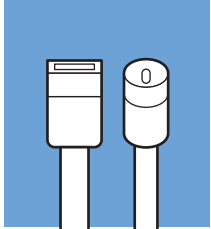


5

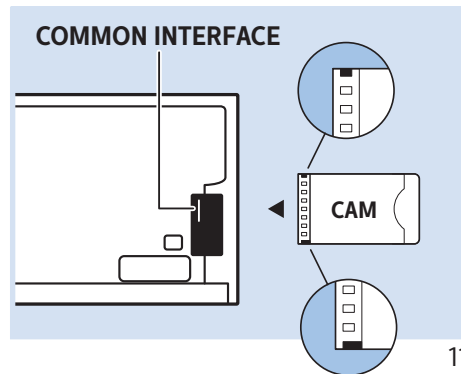
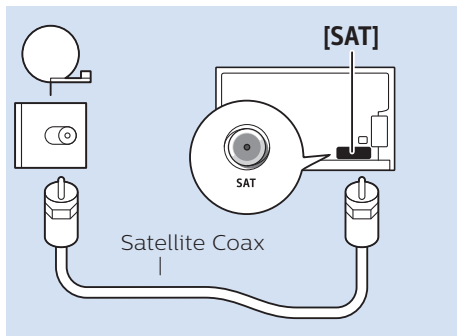
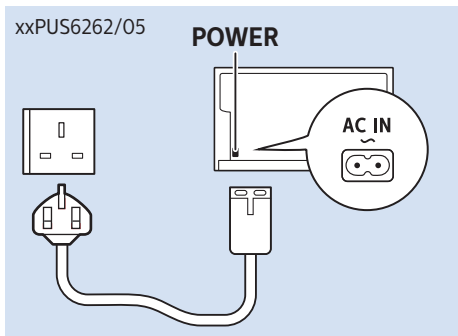
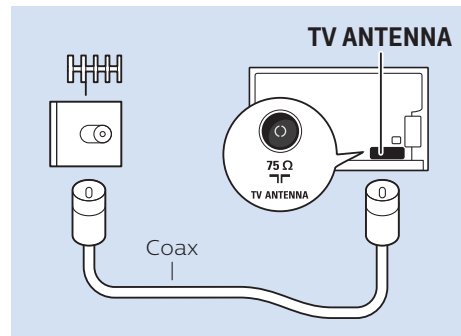
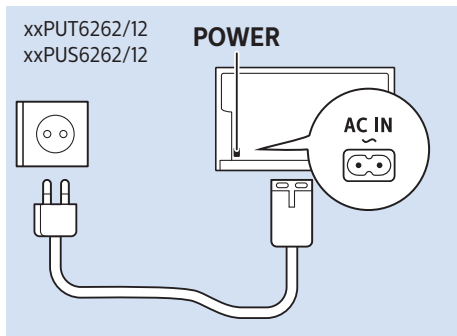
65"



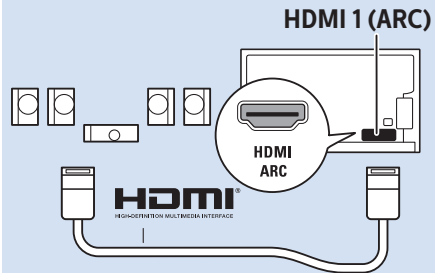




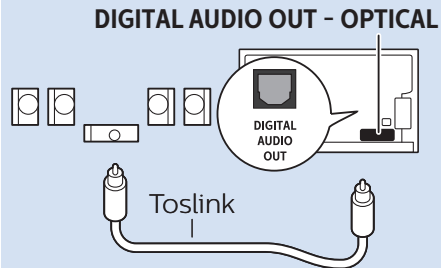
www.philips.com/connectivityguide



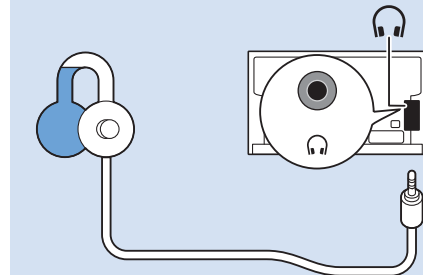
Digital Audio System - HDMI ARC



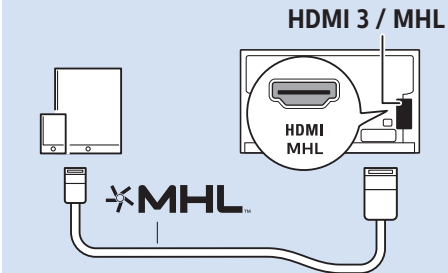
Digital Audio System - OPTICAL



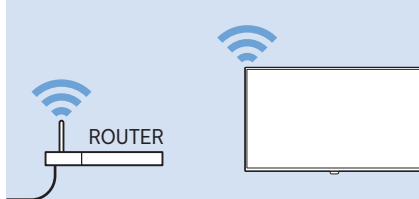
Headphones



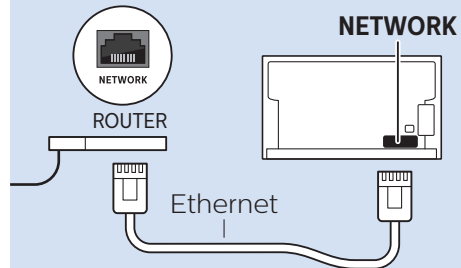
MHL



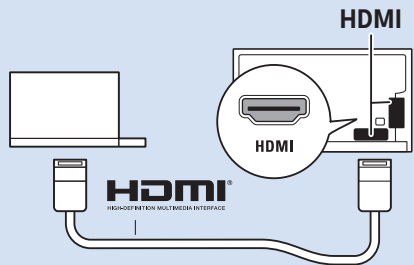
Network - Wireless



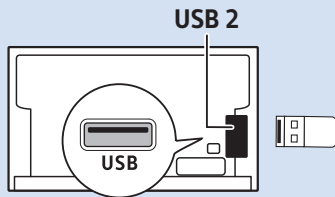
Network - Wired



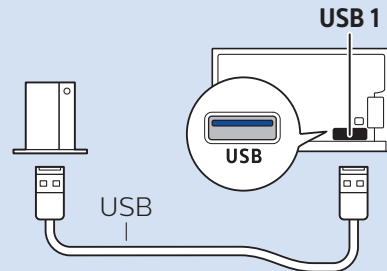
Computer - HDMI



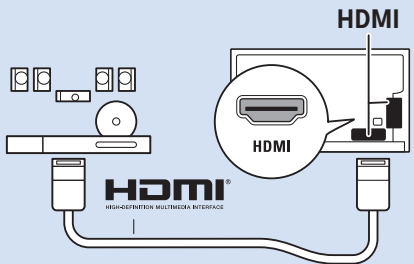
USB Flash Drive



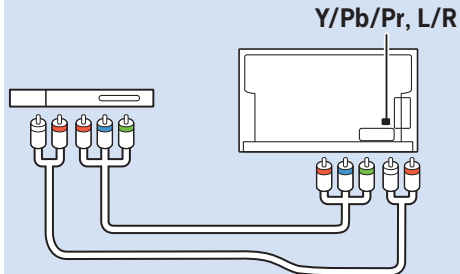
USB Hard Drive



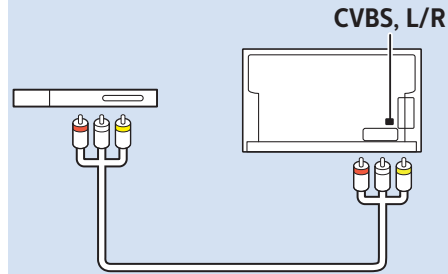
Multimedia Player (UHD Video source)

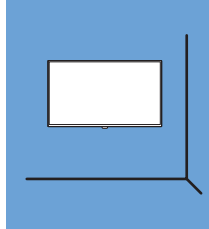
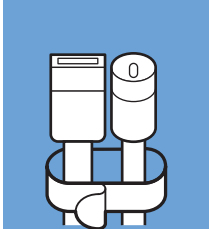


Video Player - YPbPr, L/R

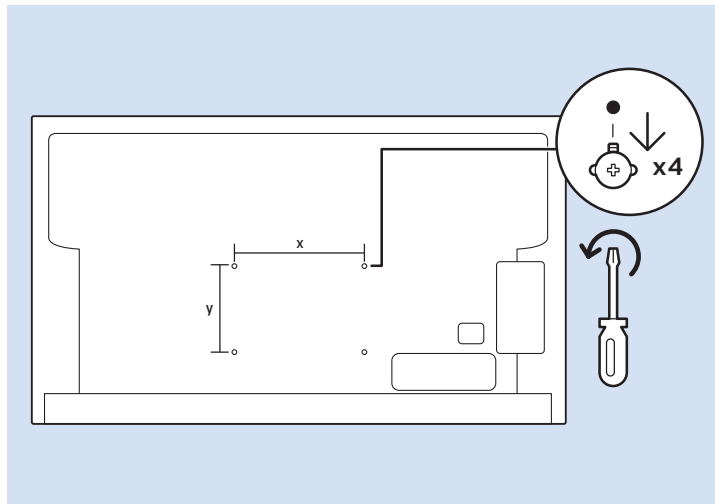
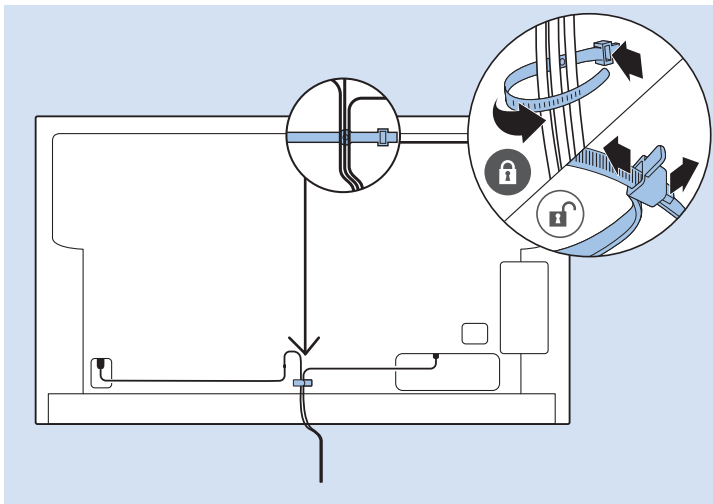


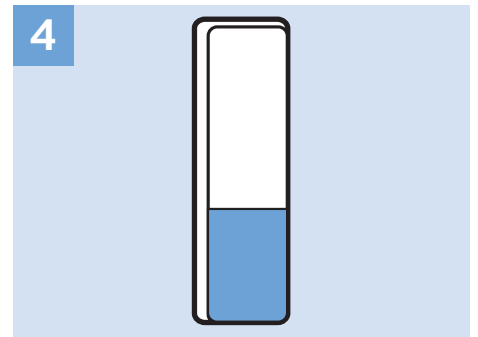
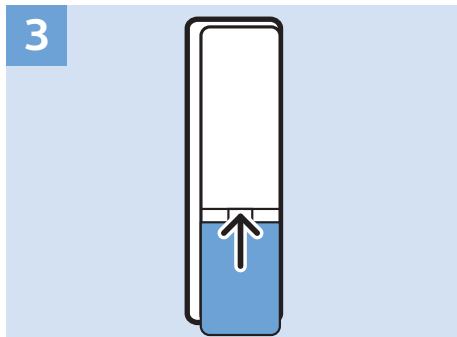
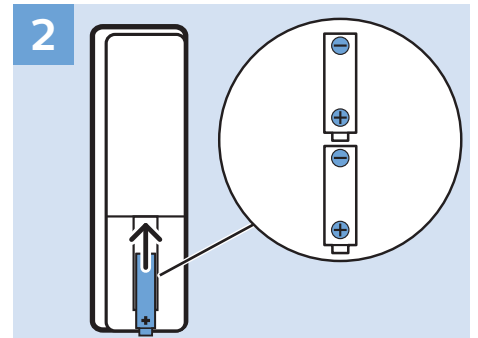
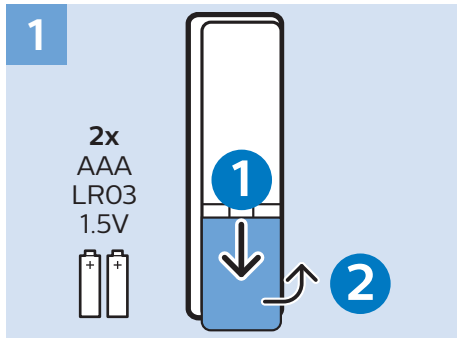
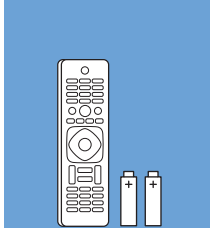
Video Player - CVBS, L/R

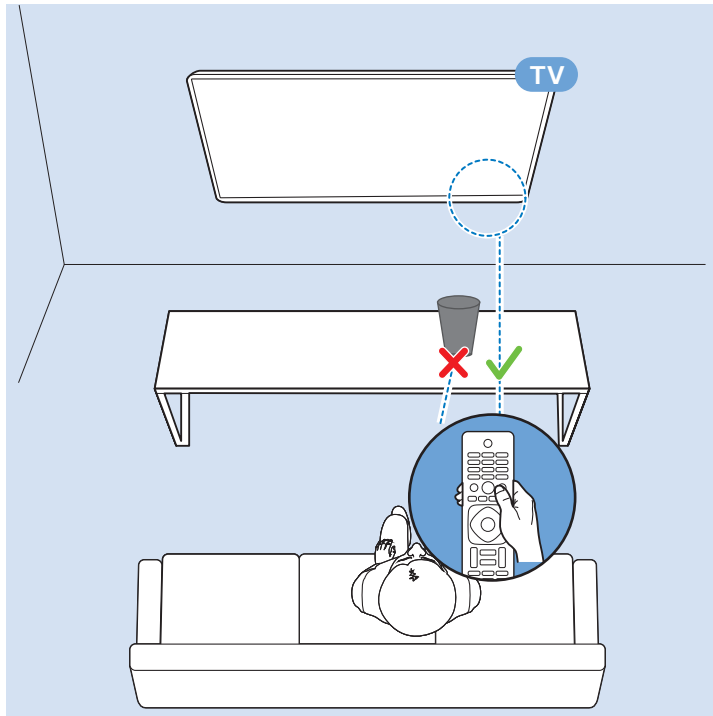
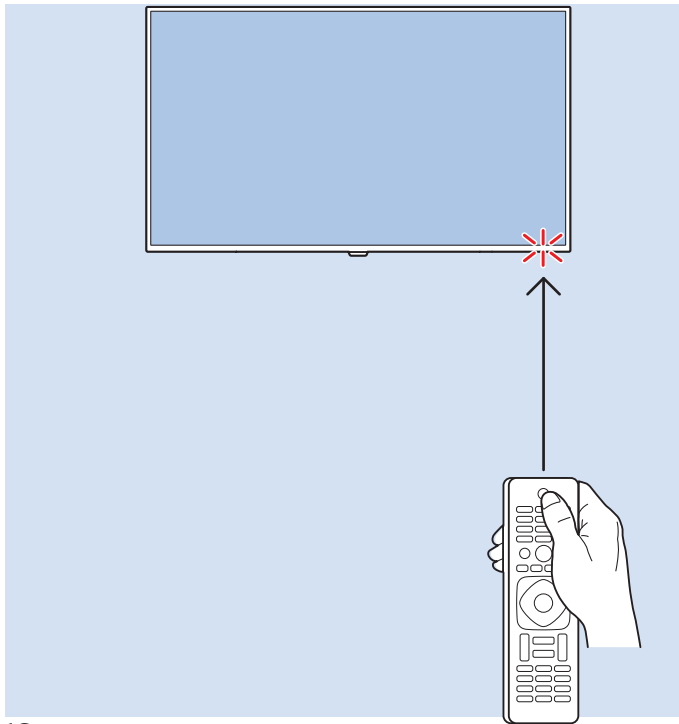


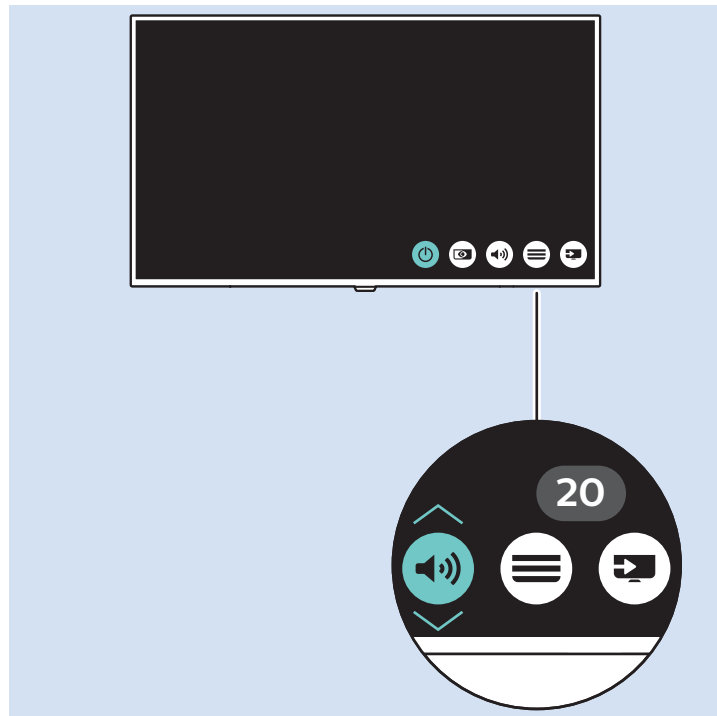
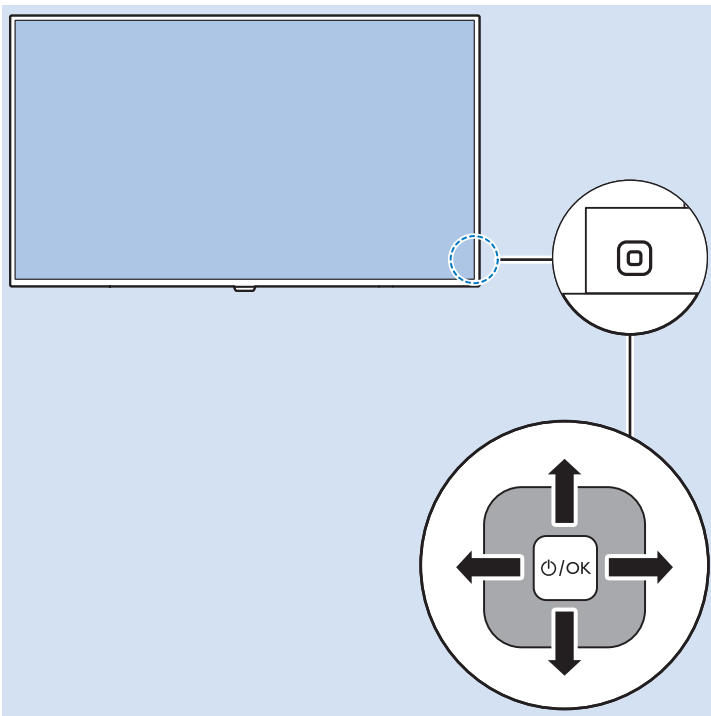


VESA (x, y)
43" (108 cm) 200x200 M6
49" (123 cm) 200x200 M6
50" (126 cm) 200x200 M6
55" (139 cm) 300x200 M6
65" (164 cm) 400x200 M6







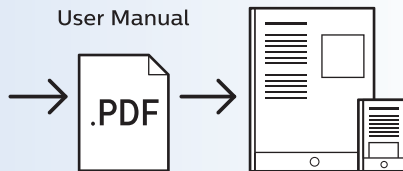




Help | Hilfe | Aide
Guida | Ayuda
Pomoc | Yardım
Руководство



philips.com/support





All registered and unregistered trademarks are property of their respective owners.
Specifications are subject to change without notice.
Philips and the Philips' shield emblem are trademarks of Koninklijke Philips N.V.
and are used under license from Koninklijke Philips N.V.
2017 © TP Vision Europe B.V. All rights reserved.

philips.com