

PHILIPS

Wall light

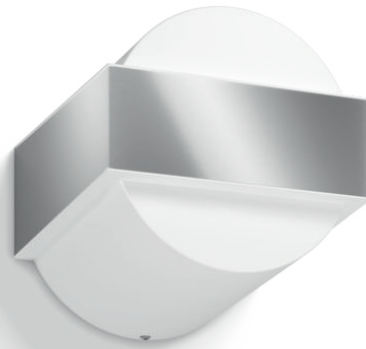
myGarden

Gravel

inox



17334/47/PN



Enjoy a beautiful garden with light

The Philips Gravel wall lantern in stainless steel adds style and strength to your wall. It distributes the light up and down for a stunning wall-washing effect. All you have to do is enjoy your garden.

Bring design into your garden

- High-quality stainless steel and superior synthetics

Special characteristics

- Easy installation
- Weather-proof

Enjoy your outdoor life

- Create a stylish and welcoming atmosphere

Highlights

High quality material

This Philips lamp is made specifically for outdoor spaces. It's hard-wearing and built to last, so it will light up your garden night after night. It's constructed from high-quality stainless steel and superior synthetics.

Easy installation



Installing a luminaire can be sometimes difficult, with this Philips outdoor lamp, you can be sure that high attention has been given to facilitate it and simplify it for you. This article is delivered with a torx key to used during installation.

Weather-proof



This Philips outdoor lamp is specially designed for humid outdoor environments and has undergone rigorous tests to ensure its water resistance. The IP level is described by two figures: the first one refers to the protection level against dust, the second against water. This lamp is designed with IP44: it is protected against splashing water. This product is most common and ideal for general outdoor use.

Create a stylish atmosphere

This outdoor wall light is designed around the latest trends and lifestyles to blend effortlessly into your outdoor space and define the ambience you have always desired.

Specifications

Design and finishing

- Colour: inox
- Material: stainless steel

Extra feature/accessory incl.

- Fully weatherproof: Yes
- Resistant high-quality material: Yes

Garden area

- Garden area: Back garden, Front garden

Miscellaneous

- Especially designed for: Garden and Patio
- Style: Contemporary
- Type: Wall light
- EyeComfort: No

Power consumption

- Energy efficiency label (EEL): no bulb included

Product dimensions and weight

- Height: 14 cm
- Length: 14.7 cm
- Net weight: 0.275 kg
- Width: 15.5 cm

Service

- Warranty: 2 year(s)

Technical specifications

- Mains power: 50–60 Hz
- Fixture dimmable: Yes
- LED: No
- Built-in LED: No
- Energy class included light source: bulb not included
- Fixture is compatible with bulb(s) of class: A++ to E
- Number of bulbs: 1
- Fitting/cap: E27
- Wattage bulb included: –
- Maximum wattage replacement bulb: 42 W

- IP code: IP44
- Class of protection: II – double insulated
- Light source replaceable: Yes

Packaging dimensions and weight

- EAN/UPC – product: 8718696153895
- Net weight: 0.275 kg
- Gross weight: 0.385 kg
- Height: 171.000 mm
- Length: 146.000 mm
- Width: 156.000 mm
- Material number (12NC): 915005301501



Issue date: 2021-06-16
Version: 0.670

© 2021 Signify Holding. All rights reserved. Signify does not give any representation or warranty as to the accuracy or completeness of the information included herein and shall not be liable for any action in reliance thereon. The information presented in this document is not intended as any commercial offer and does not form part of any quotation or contract, unless otherwise agreed by Signify. Philips and the Philips Shield Emblem are registered trademarks of Koninklijke Philips N.V.

www.lighting.philips.com