

SIMPLE MANUAL

Mini Hi-Fi System

Please read this manual carefully before operating your set and retain it for future reference.

To view the instructions of advanced features, visit <http://www.lg.com> and then download Owner's Manual.

Some of the content in this manual may differ from your unit.

MODEL

CJ98



www.lg.com

WARNING: This product contains chemicals known to the State of California to cause cancer and birth defects or other reproductive harm. ***Wash hands after handling.***

FCC Compliance Statement

This equipment has been tested and found to comply with the limits for a Class B digital device, pursuant to Part 15 of the FCC Rules. These limits are designed to provide reasonable protection against harmful interference in a residential installation. This equipment generates, uses, and can radiate radio frequency energy and, if not installed and used in accordance with the instructions, may cause harmful interference to radio communications. However, there is no guarantee that interference will not occur in a particular installation. If this equipment does cause harmful interference to radio or television reception, which can be determined by turning the equipment off and on, the user is encouraged to try to correct the interference by one or more of the following measures:

- Reorient or relocate the receiving antenna.
- Increase the separation between the equipment and the receiver.
- Connect the equipment to an outlet on a circuit different from that to which the receiver is connected.
- Consult the dealer or an experienced radio/TV technician for help.

This device complies with part 15 of the FCC Rules. Operation is subject to the following two conditions:
(1) this device may not cause harmful interference and
(2) this device must accept any interference received, including interference that may cause undesired operation of the device. Any changes or modifications in construction of this device which are not expressly approved by the party responsible for compliance could void the user's authority to operate the equipment.

FCC RF Radiation Exposure Statement : This equipment complies with FCC radiation exposure limits set forth for an uncontrolled environment. This transmitter must not be co-located or operating in conjunction with any other antenna or transmitter.

This equipment should be installed and operated with minimum distance 20 cm (7.8 inches) between the antenna and your body. Users must follow the specific operating instructions for satisfying RF exposure compliance.

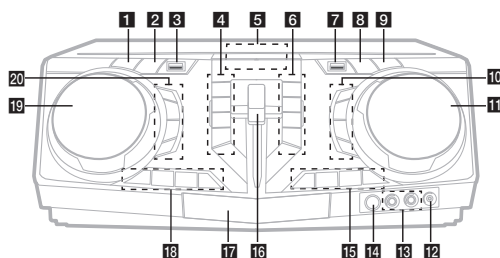
Responsible Party :

LG Electronics USA, Inc.
1000 Sylvan Ave
Englewood Cliffs, NJ 07632
Tel: 1-800-243-0000



FM antenna (1)

Front Panel



1 (Standby)

Turns the power on or off.

2 **USB REC / DEMO**

- Records to USB.
- In power off status, if you press **USB REC / DEMO**, show DEMO mode.

3 **USB 1 Port**

You can play sound files by connecting the USB device.

4 **PARTY THRUSTER MODE**

Selects PARTY THRUSTER mode.

(Stop)

Stops playback or cancels DELETE function.

(Skip/Search)

- Skips backward.
- Searches for a section within a track/file.
- Selects the radio stations.

(Open/Close)

Opens and closes the disc tray.

5 **Display window**

6 **DJ LOOP**

Selects DJ LOOP mode.

(DJ LOOP mode can use during CD/USB playback.)

(Play/Pause)

- Starts or pauses playback.
- Selects stereo/mono.

(Skip/Search)

- Skips forward.
- Searches for a section within a track/file.
- Selects the radio stations.

REGION EQ / BASS BLAST

- Chooses region equalizer.
- Press and hold to select BASS effect directly.

7 **USB 2 Port**

You can play sound files by connecting the USB device.

8 **F (Function)**

Selects the function and input source.

9 **WIRELESS LINK**

- Selects MASTER or SLAVE on WIRELESS PARTY LINK mode.
- Enable or disable WIRELESS PARTY LINK mode.

10 **LIGHTING**

Turns on/off the lighting effects.

VOCAL EFFECTS

Selects VOCAL EFFECTS mode.

VOICE CANCELLER

You can enjoy the function while playing the music, by reducing singer vocal of music in the various source.

ECHO

Selects ECHO mode.

11 **MASTER VOLUME / MULTI JOG**

- Adjust speaker volume.
- Selects lighting mode and vocal effects mode.

12 **PORT. (Portable) IN jack**

13 **MIC (Microphone) 1/2 jack**

14 (Remote sensor)

15 **KEY CHANGER (# / b)**

Changes the key to suit your vocal range.

MIC (Microphone) +/-

Adjust microphone volume.

16 **PARTY THRUSTER lever**

Slide up the lever to create a party atmosphere.

17 **Disc tray**

18 **CLUB, DRUM, USER (DJ PRO)**

Selects CLUB, DRUM or USER sound effect to mix.

(If you want to use USER, you have to register a source with "Music Flow Bluetooth" app.)

1, 2, 3, 4 (DJ PRO PAD)

Press a desired sound pad.

19 **SCRATCH / SEARCH & LEVEL CONTROL**

- Turns clockwise or counterclockwise to make scratch sound.
- Turns clockwise or counterclockwise to control the USER EQ level.
- Searches a folder or a file.
- Adjust DJ EFFECT level.

20 **DJ EFFECT**

Selects a desired DJ EFFECT.

USER EQ

Selects the sound effect created by your own.

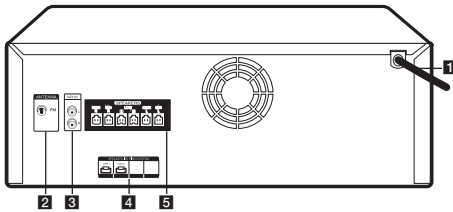
SEARCH

Moves to folder or file in selection mode.

OK

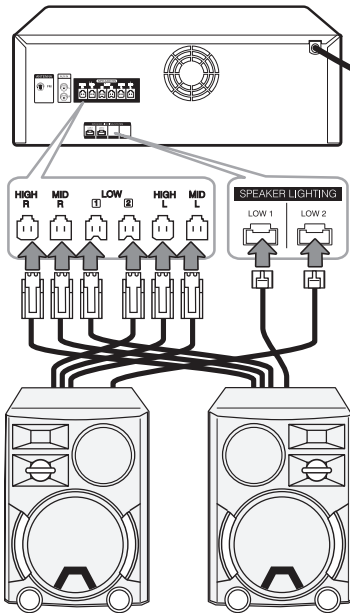
Selects a folder when searching a file.

Rear Panel



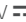
- 1** Power cord
- 2** ANTENNA (FM)
- 3** AUX IN (L/R)
Connect an auxiliary device.
- 4** SPEAKER LIGHTING SYSTEM
Connect the speaker lighting cables.
- 5** SPEAKERS connector

Speaker Connection



Additional Information

Specifications

Power Requirements	Refer to the main label on the unit.
Power Consumption	Refer to the main label on the unit.
Dimensions (W x H x D)	Approx. 450 mm x 170 mm x 349 mm (17.7 inches x 6.6 inches x 13.7 inches)
Bus Power Supply (USB)	5 V  500 mA
Amplifier (Total RMS output power)	3,500 W RMS

Design and specifications are subject to change without notice.

Controller App



Download the **Music Flow Bluetooth** App to your device. (Android only)

LG Sound Sync (Wireless)



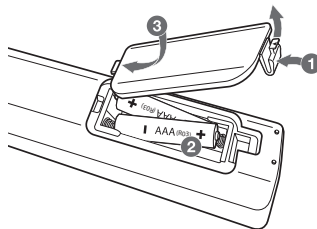
For more information, download the online owner's manual. <http://www.lg.com>

Additional Information

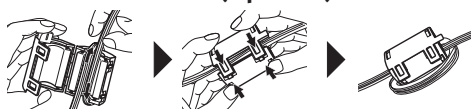
Caution

- When you use the multiple socket, it is advisable to use 15 A socket. 10 A socket may cause power off due to lack of power supply.
- Do not place objects on the speakers. It may cause the objects to fall and make property damage.
- Install the speakers on a firm surface not to slide. The vibration caused by the strong output can shake and move the speakers.
- Avoid turning up max volume in a small enclosed space. The powerful and intense output of the speakers can shake the ceiling and get the objects in the room falling.
- To protect from hearing damage, keep the sufficient distance from the speaker. The overwhelming sound from the speaker may cause a person's hearing damage.
- Allow more than 20 cm of free space between the main set and the speakers when you install the main set on the ground. High sound pressure from the speakers can make the set tremble to disturb the CD playback.
- Connect the power cord to wall outlet directly if possible. Or when you use an extension cable, it is highly recommended to use an extension cable of 110 V / 15 A or 230 V / 15 A, otherwise the unit may not operate properly because of the lack of power supply.
- Do not overload the extension cord with excessive electrical load.

Replacement of battery



About Ferrite Core (Optional)



Wind power cord cable around the ferrite core twice.



LG Customer Information Center

1-800-243-0000	USA, Consumer
1-888-865-3026	USA, Commercial

Register your product Online!

www.lg.com

Printed in China